

EUT Internal Photos

Figure 5
Internal View (Removed Side Cover)



Figure 6
Internal View (Battery, Front View)



Figure 7
Internal View (Battery, Front View)



Figure 8
Internal View (Removed Cover)

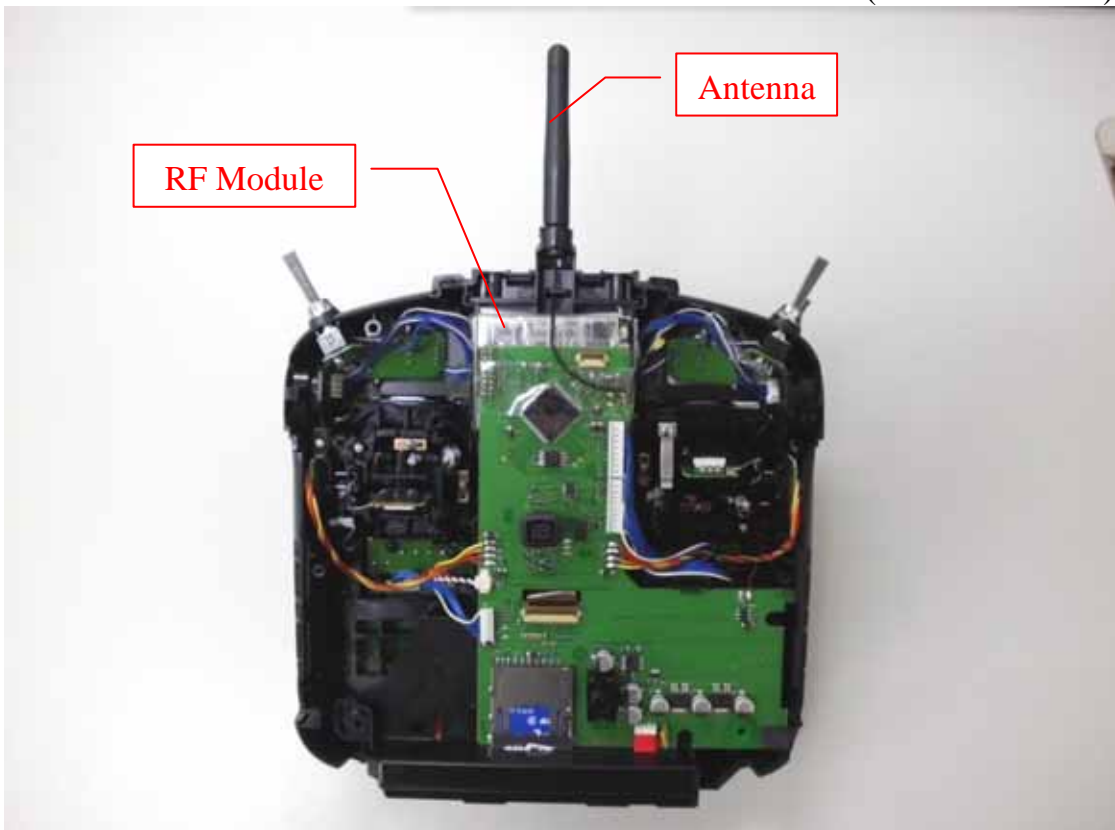


Figure 9
Internal View



Figure 10
Internal View (RF Antenna View)



Figure 11
Internal View (TB47B-A Board, Front View)

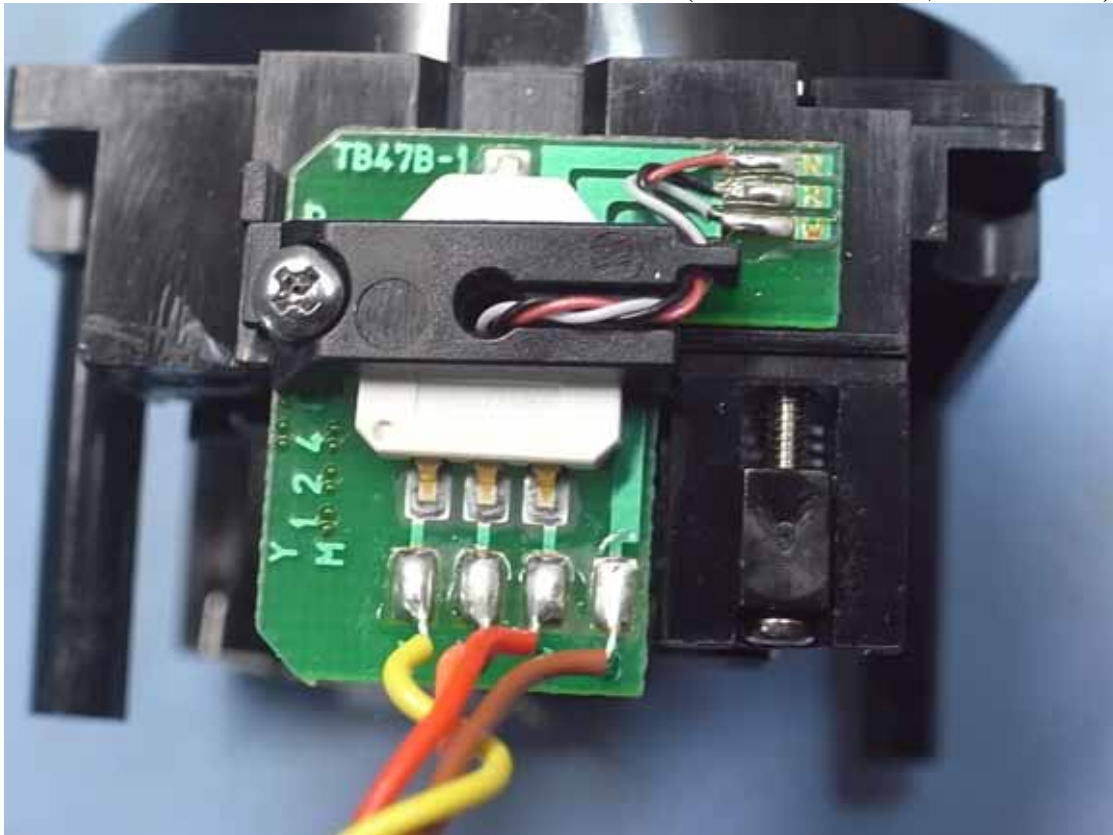


Figure 12
Internal View (TB72A-10 Board, Front View)

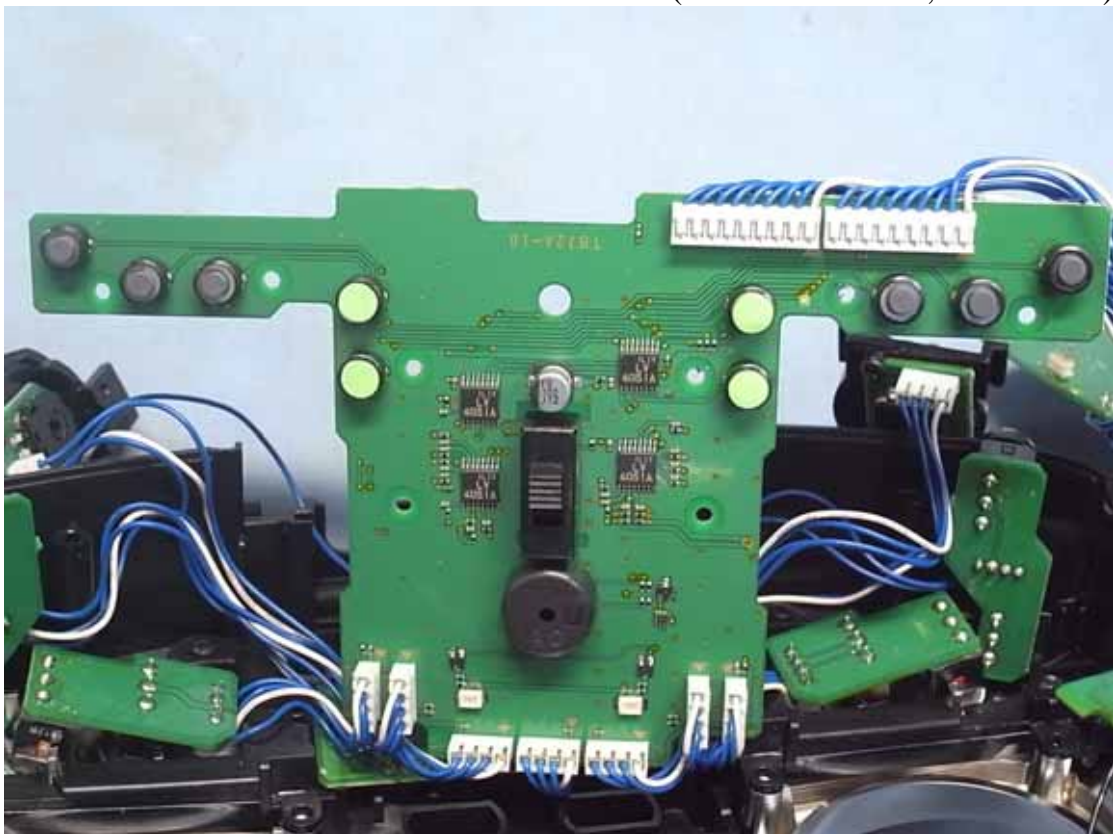


Figure 13
Internal View (TB72A-10 Board, Back View)

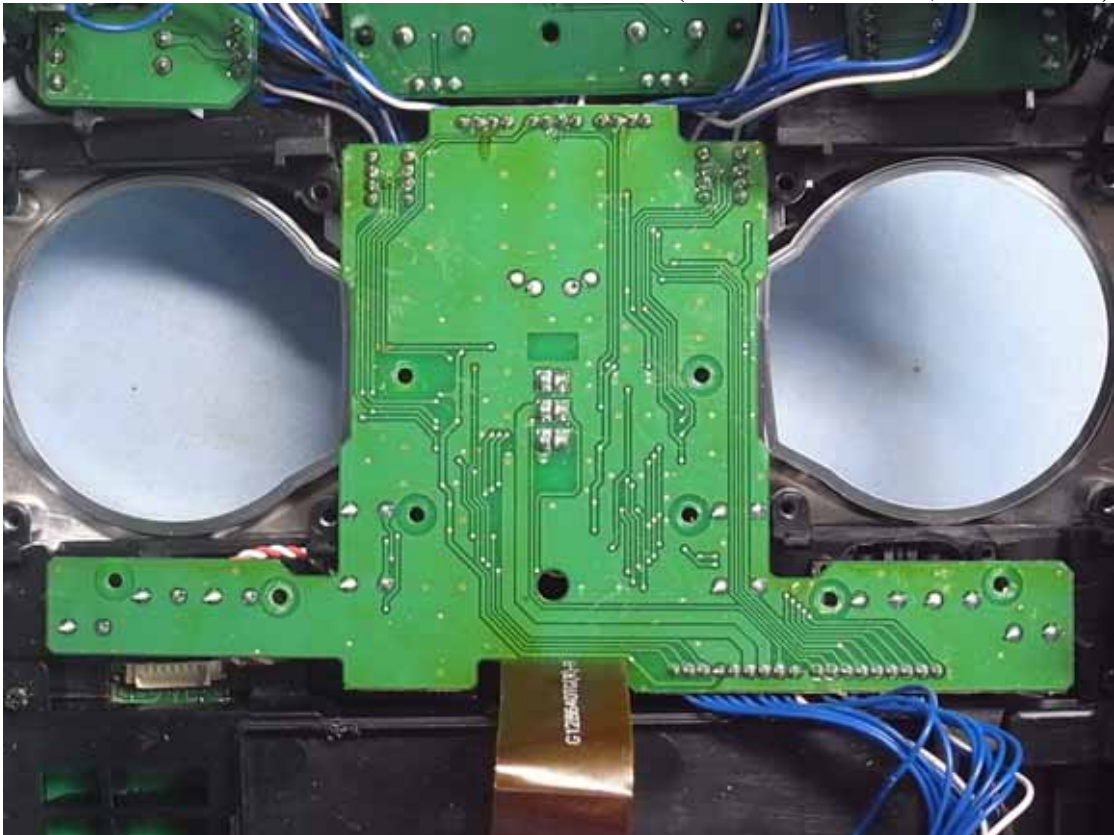


Figure 14
Internal View (Control Board)

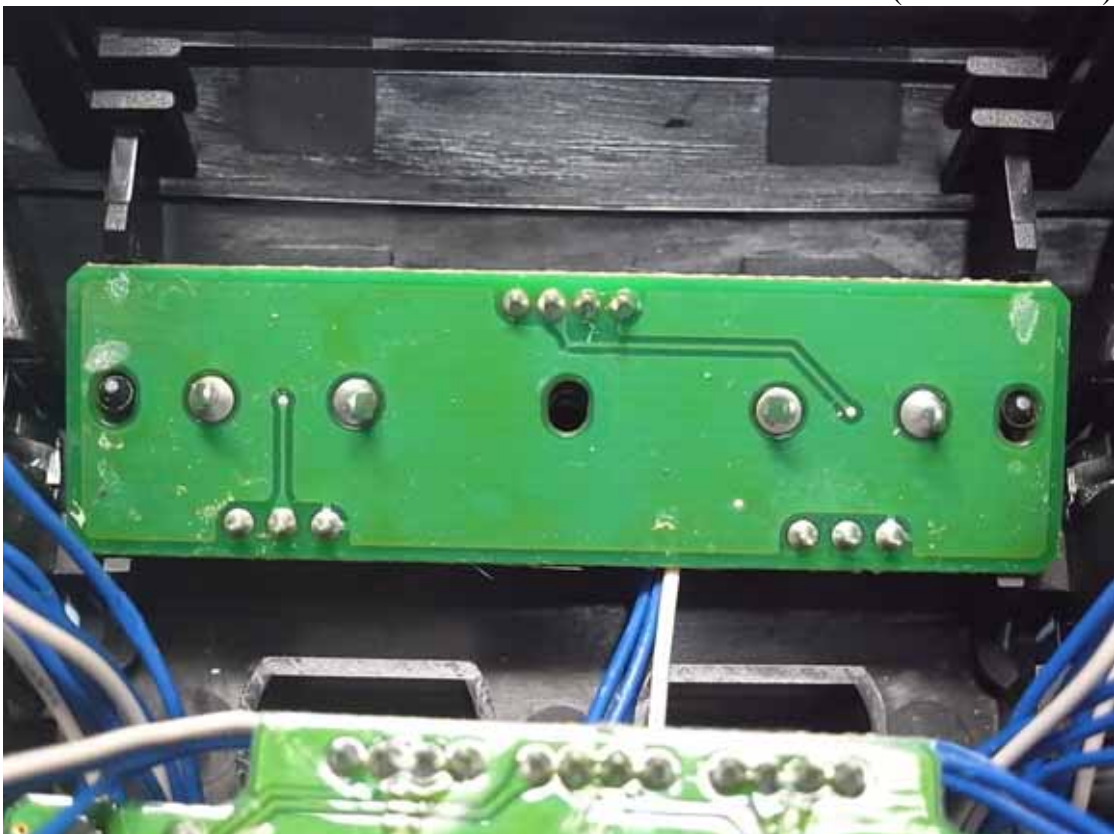


Figure 15
Internal View (TB72A-7)



Figure 16
Internal View (Control Board)



Figure 17
Internal View



Figure 18
Internal View (TB72A-9 Board, Back View)

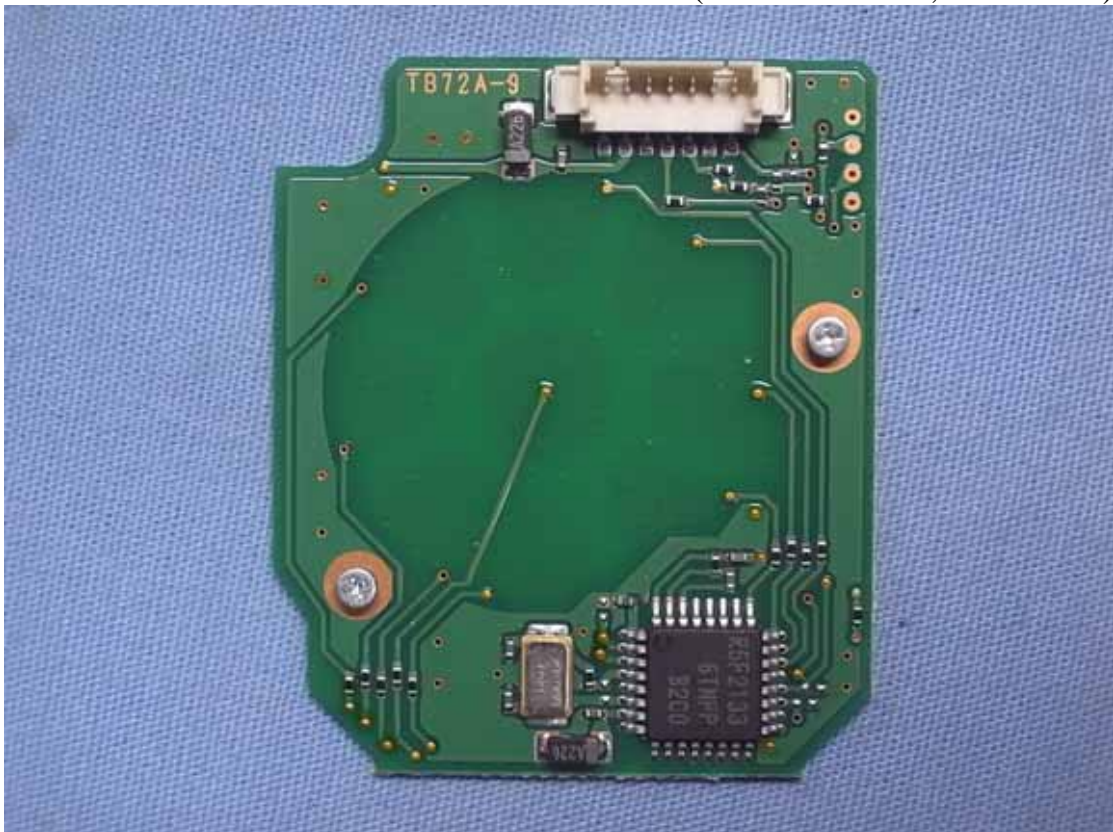


Figure 19
Internal View (TB72A-9 Board, Front View)

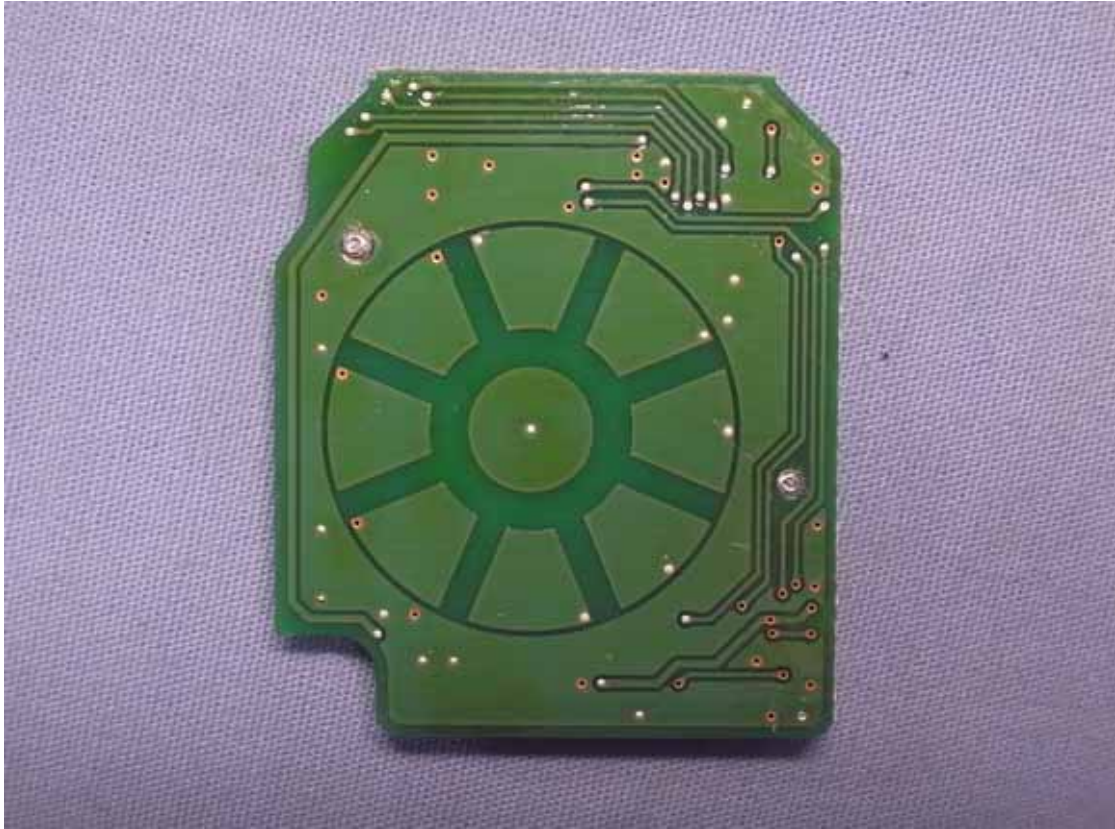


Figure 20
Internal View (LCD Panel, Front View)



Figure 21
Internal View (LCD Panel, Back View)

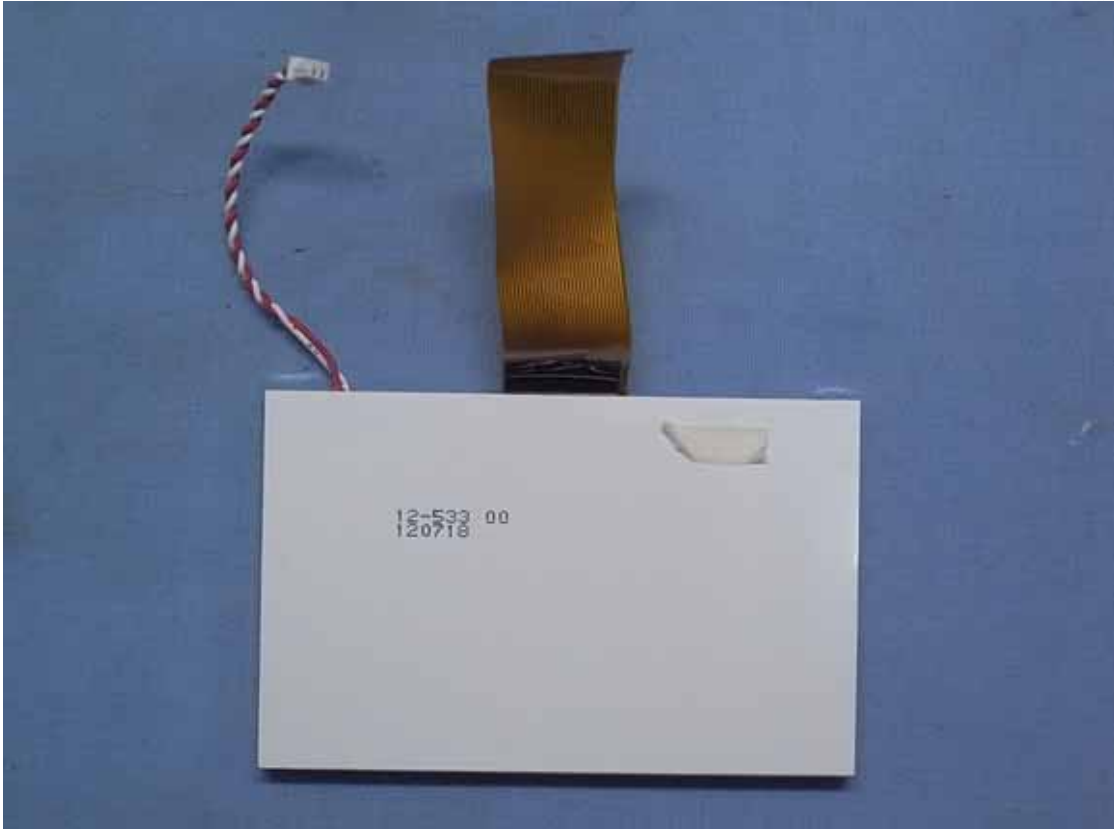


Figure 22
Internal View (RF Module Board, Front View)



Figure 23
Internal View (RF Module Board/Removed shielded Cover, Front View)



Figure 24
Internal View (RF Module Board, Back View)



Figure 25
Internal View (TB72A-1 Board, Front View)



Figure 26
Internal View (TB72A-1 Board, Back View)

