

EUT Internal Photos

Figure 5
Internal View (Removed Back Cover)



Figure 6
Internal View (Ni-MH Battery)



Figure 7
Internal View (Antenna)

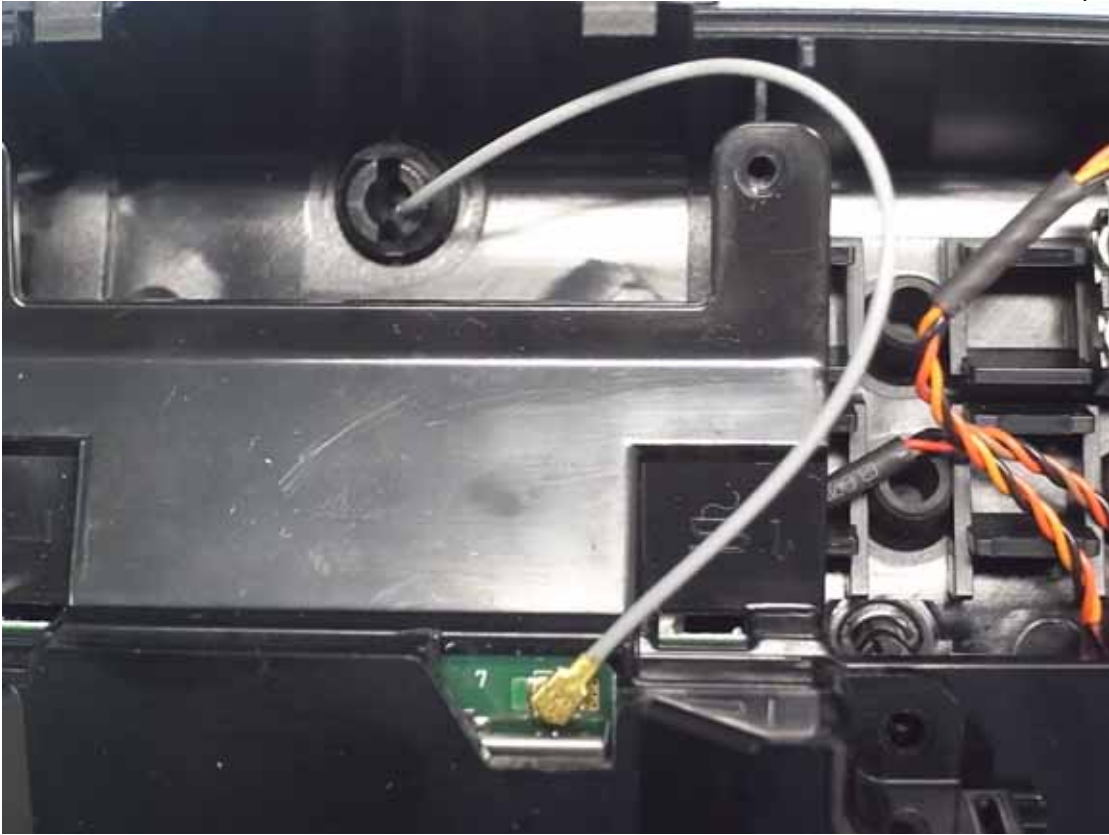


Figure 8
Internal View (Removed Cover)



Figure 9
Internal View (Removed Top Cover)



Figure 10
Internal View (Removed PCBs)



Figure 11
Internal View (Control Board, Back View)

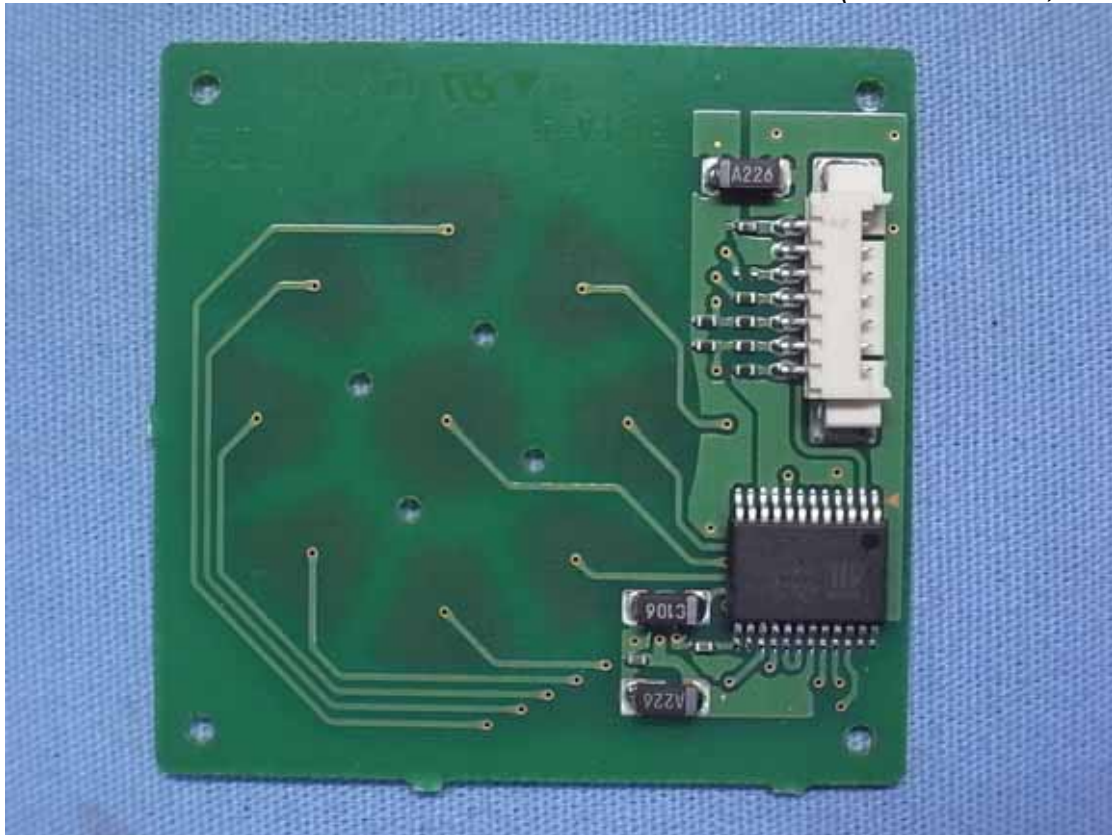


Figure 12
Internal View (Control Board, Front View)

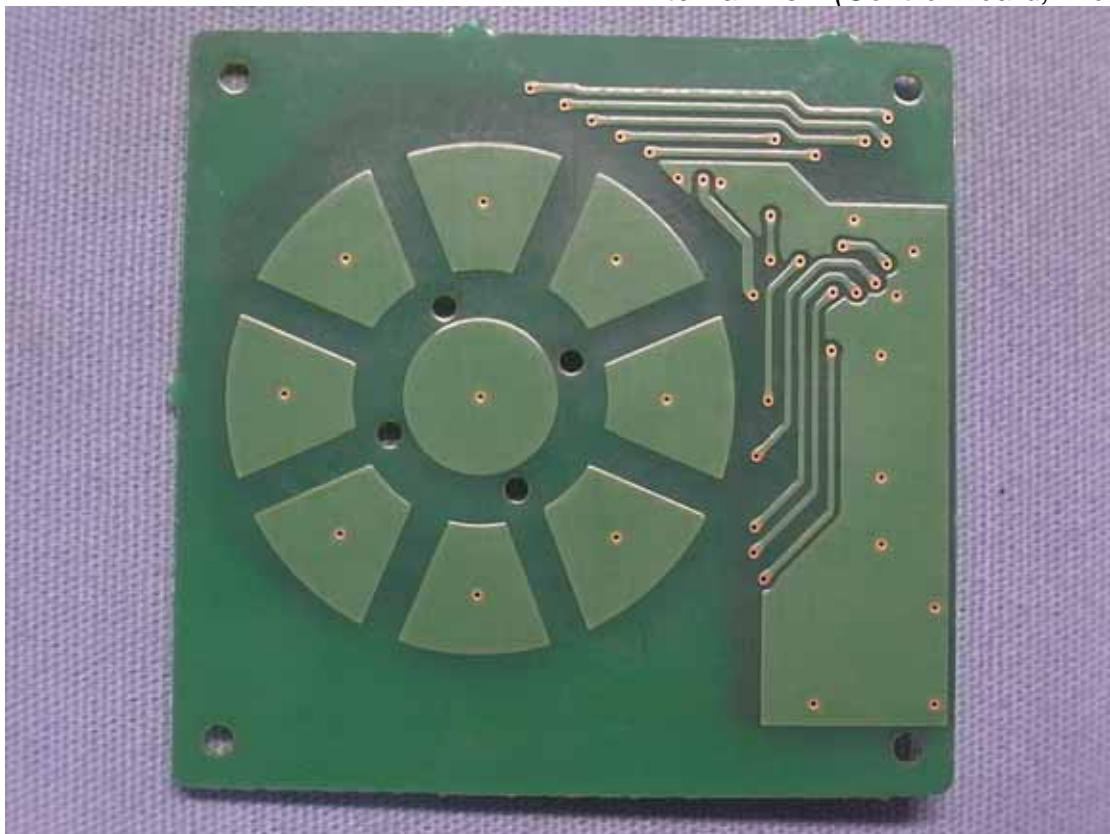


Figure 13
Internal View (SD & DC In Connect Board, Back View)

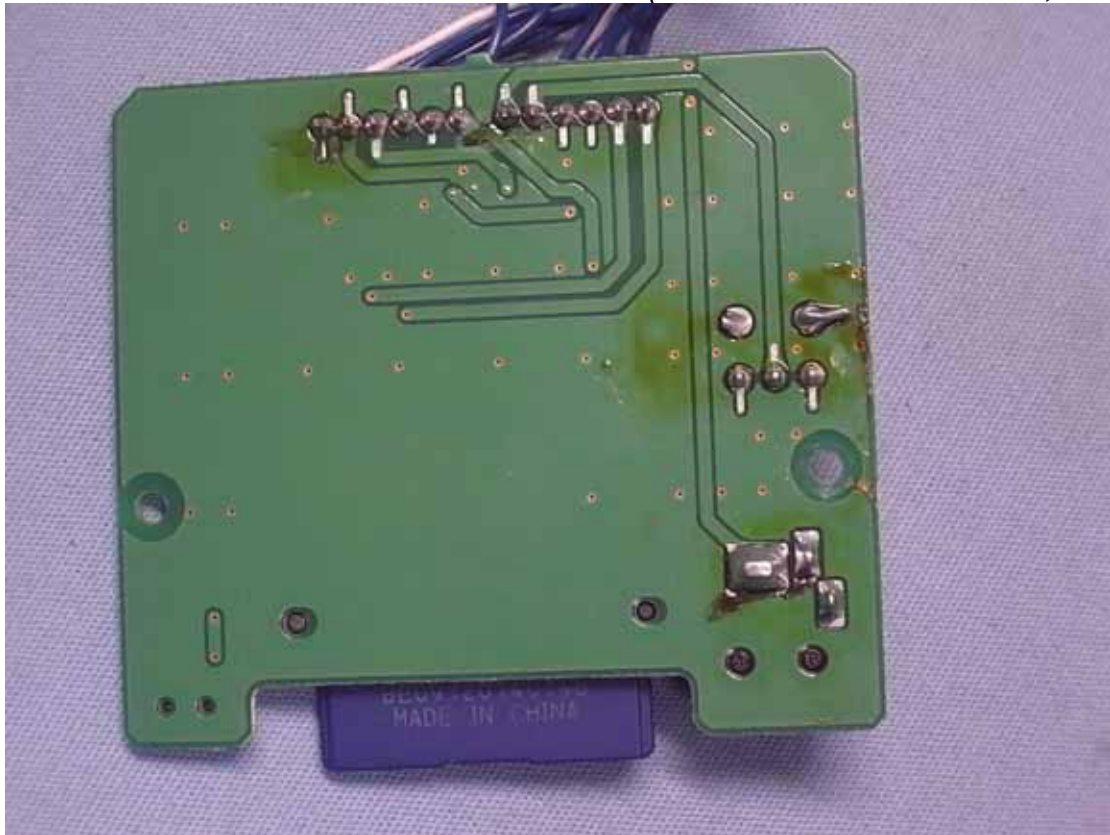


Figure 14
Internal View (SD & DC In Connect Board, Front View)

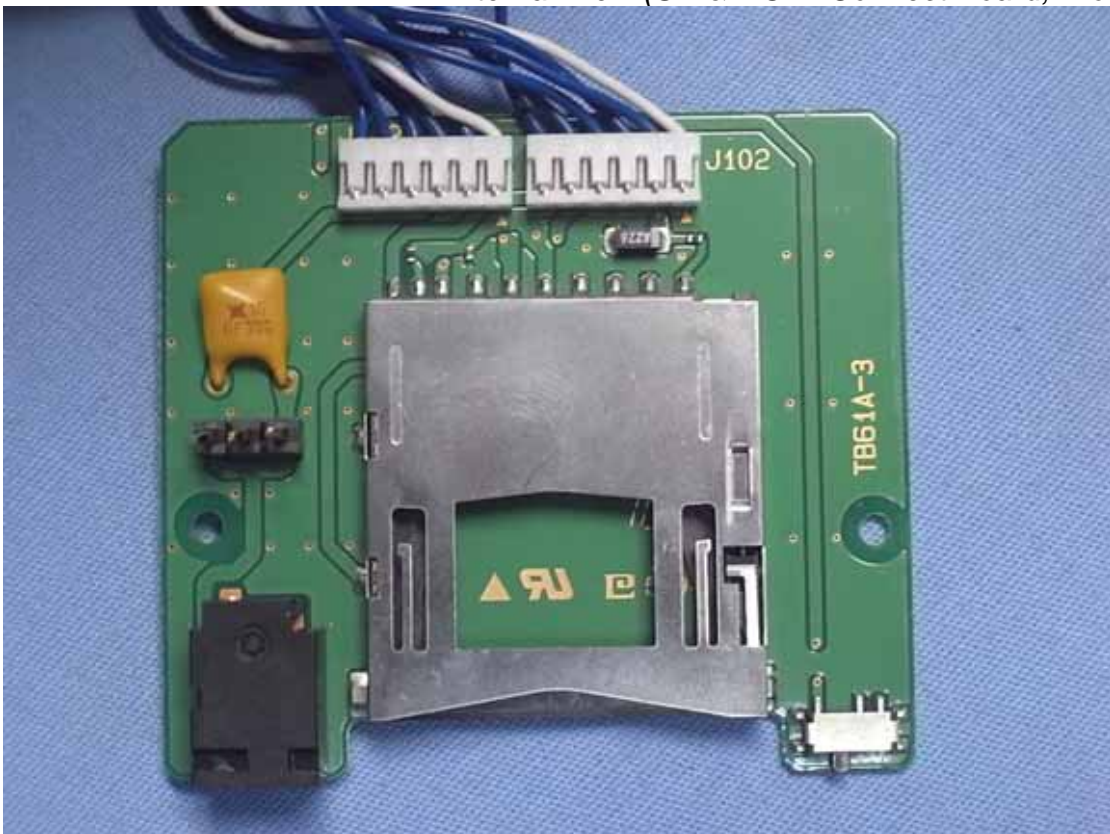


Figure 15
Internal View (DSC Connect Board, Back View)

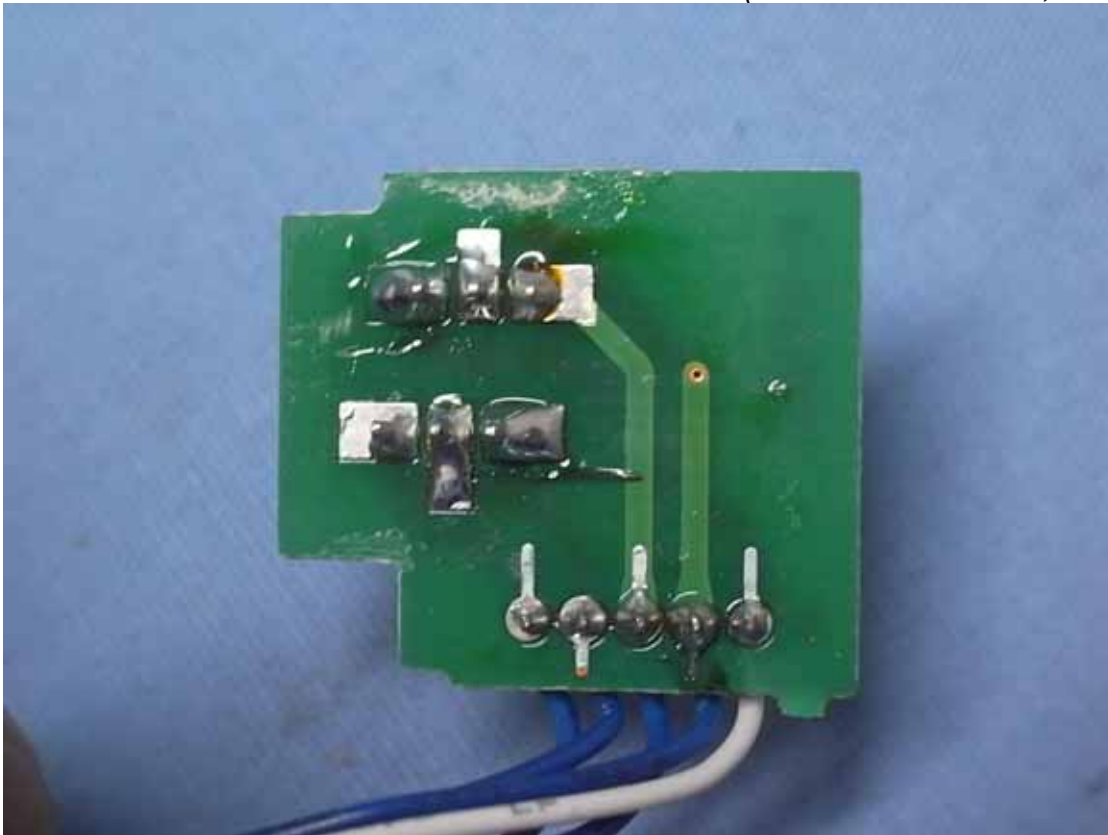


Figure 16
Internal View (DSC Connect Board, Front View)



Figure 17
Internal View (LCD Panel, Back View)

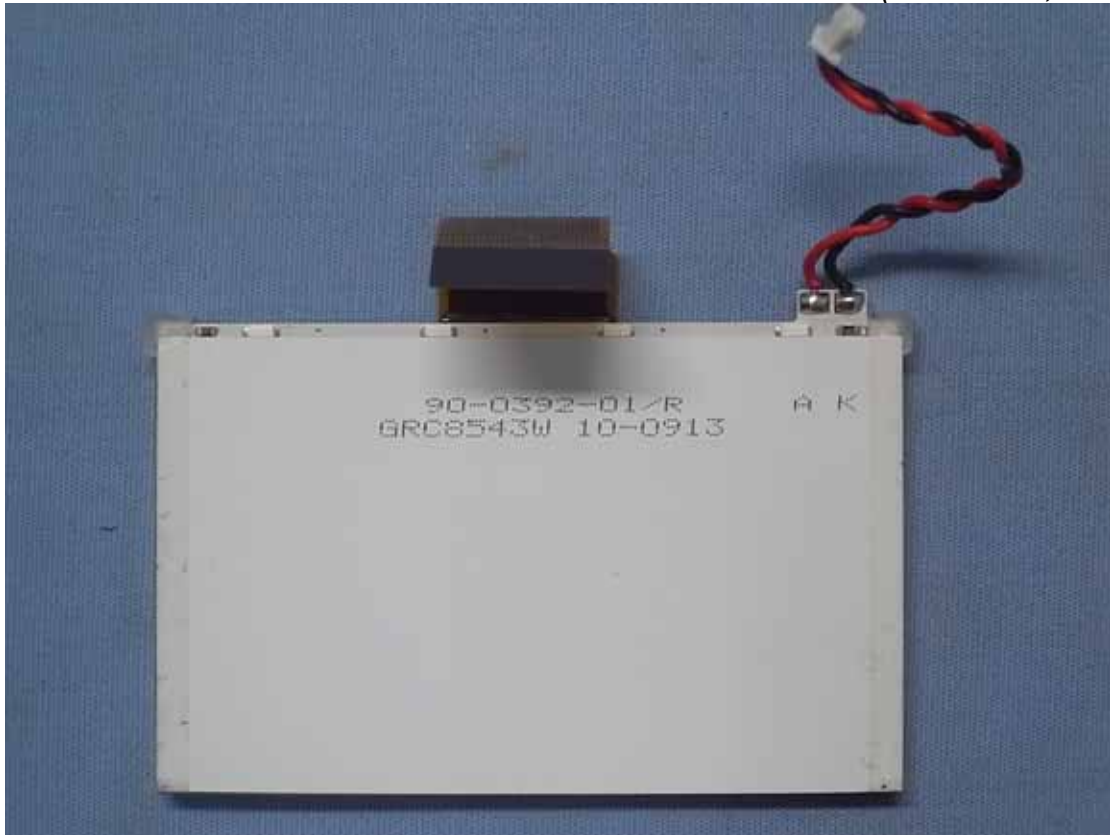


Figure 18
Internal View (LCD Panel, Front View)

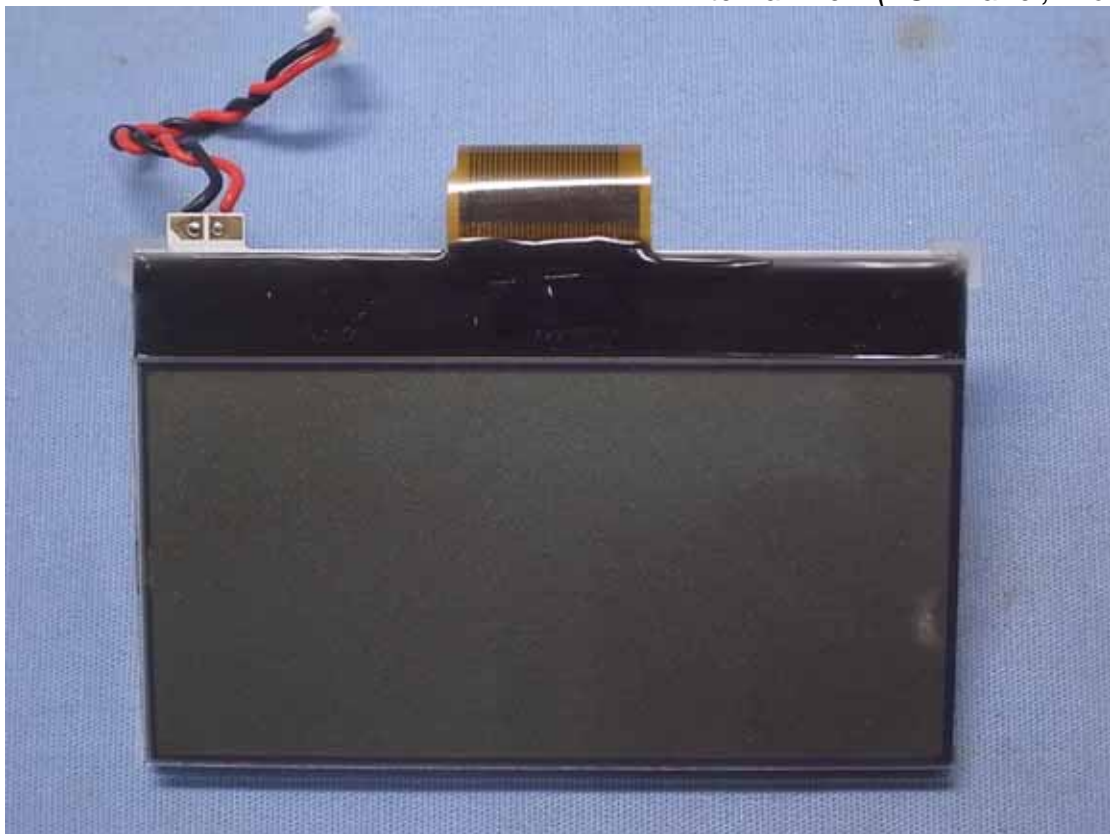


Figure 19
Internal View (Main Board, Front View)

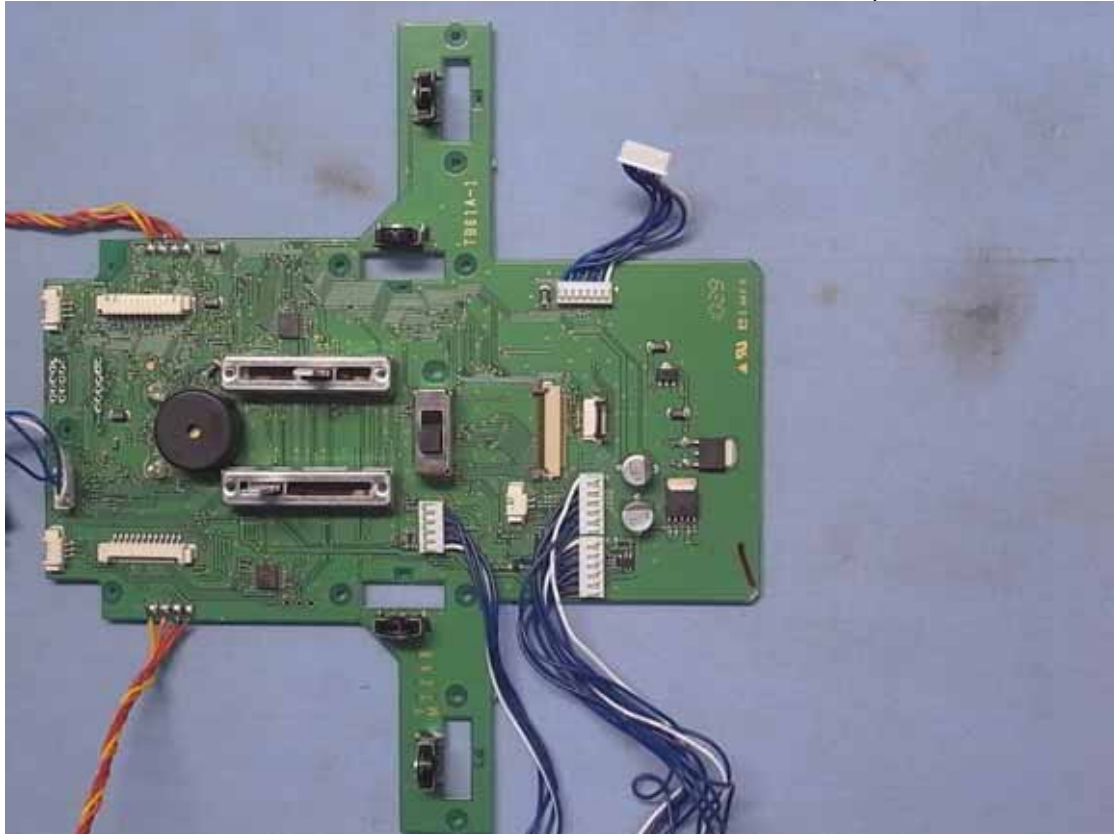


Figure 20
Internal View (Main Board, Back View)

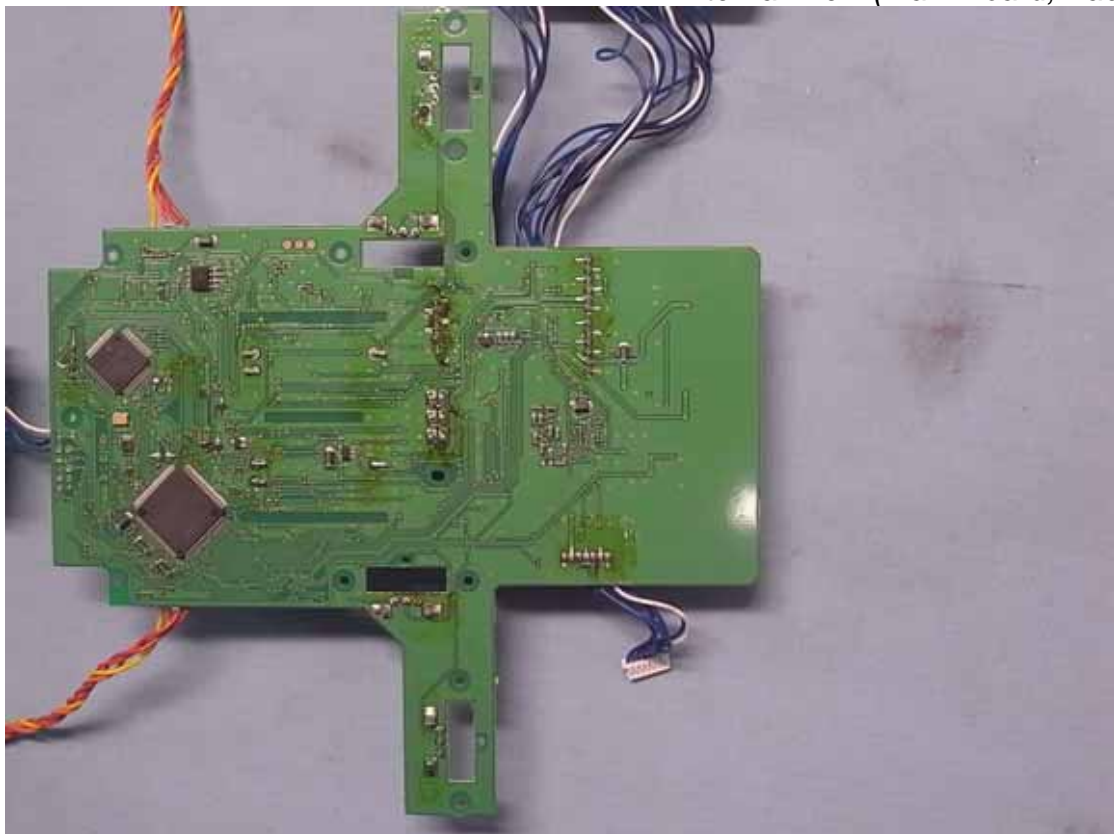


Figure 21
Internal View (Control Board, Front View)

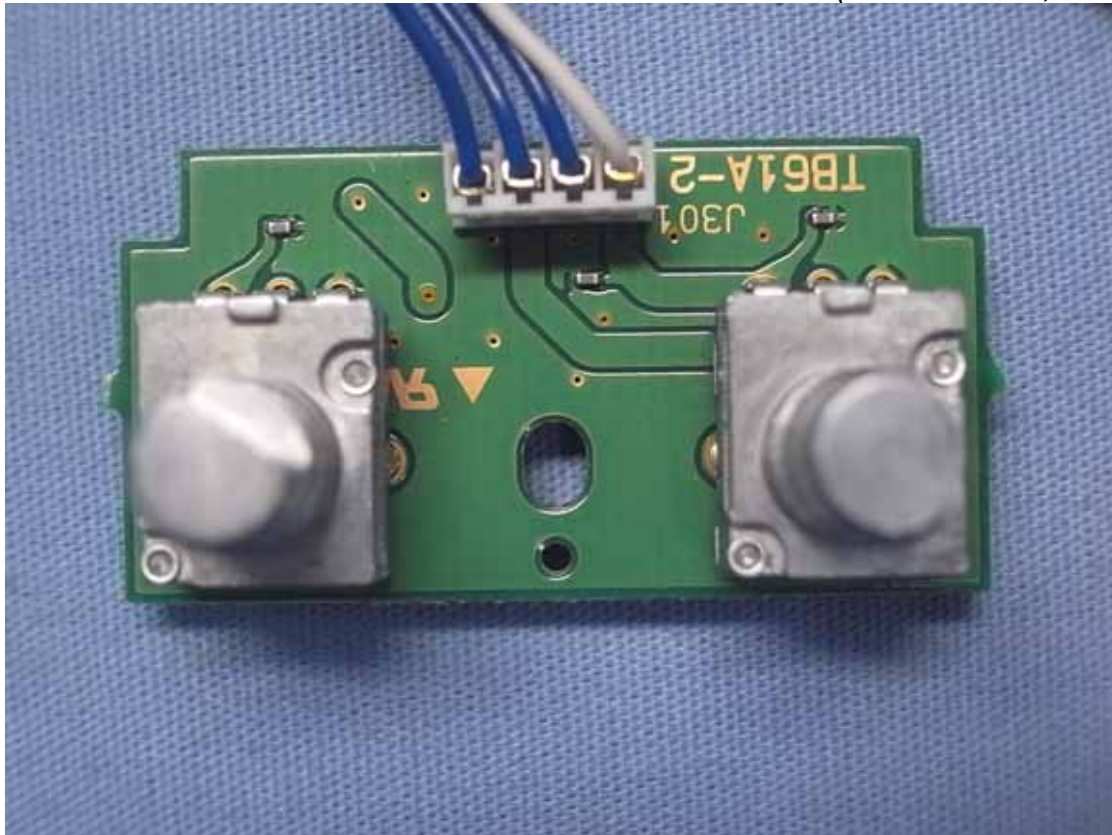


Figure 22
Internal View (Control Board, Back View)

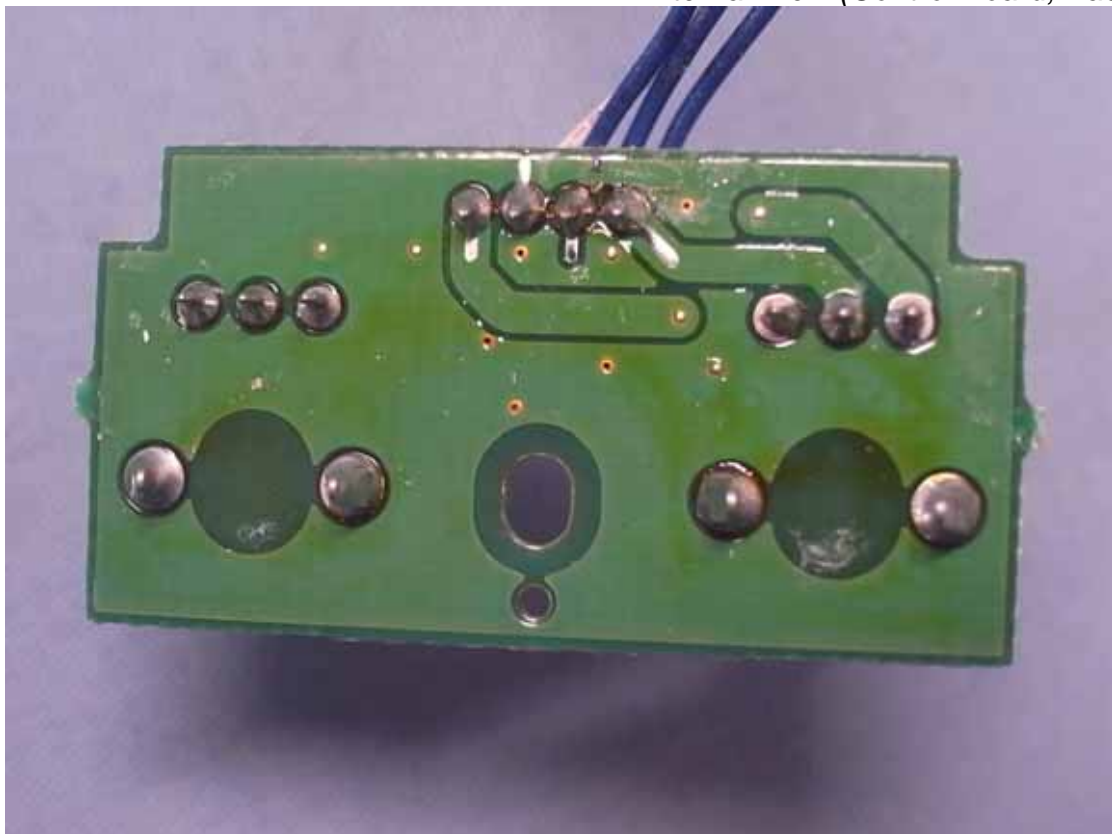


Figure 23
Internal View (RF Board, Back View)



Figure 24
Internal View (RF Board Removed Cover, Front View)

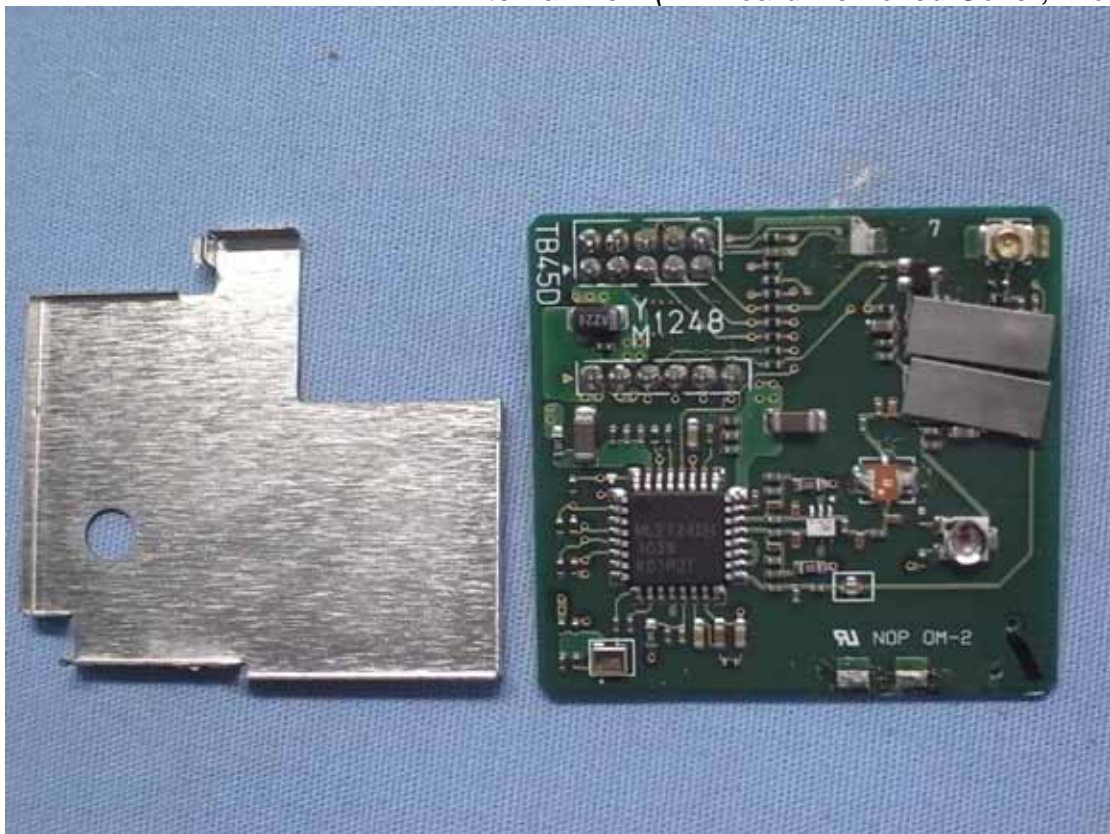


Figure 25
Internal View (Control Board, Front View)



Figure 26
Internal View (Control Unit, Side View)



Figure 27
Internal View (Control Board, Front View)

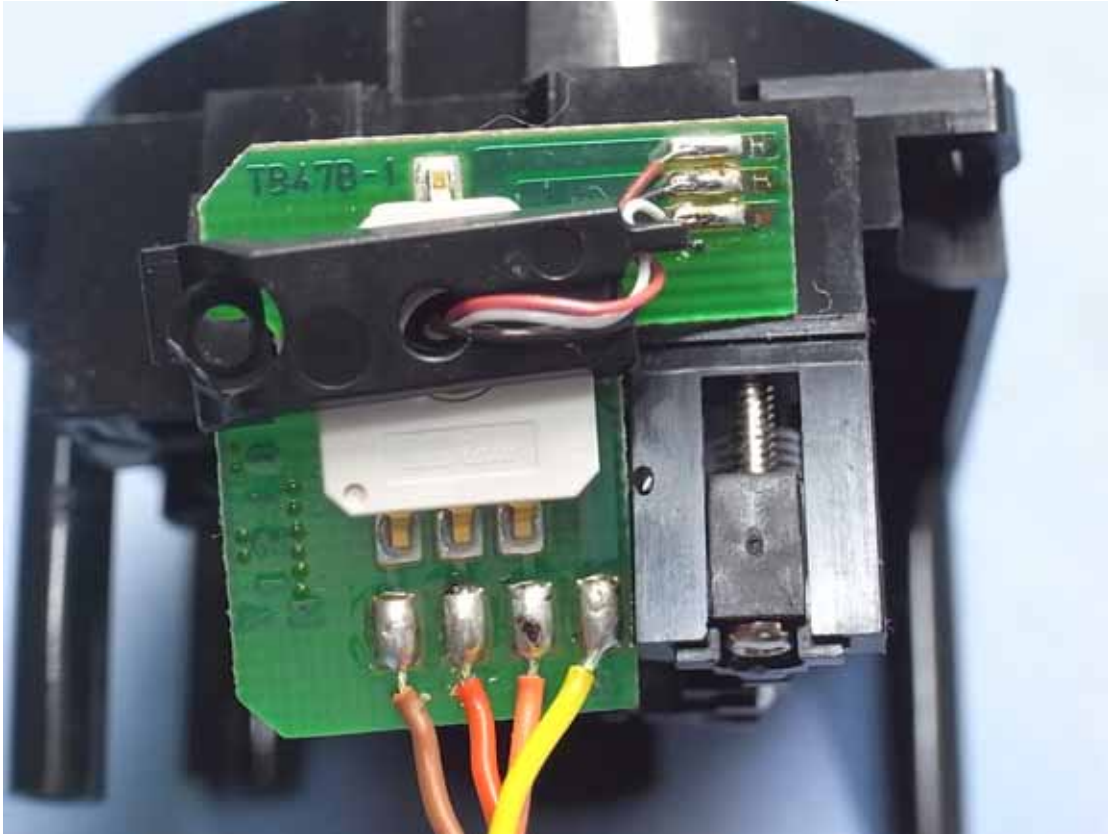


Figure 28
Internal View (Control Board, Back View)

