

CH91108

WLAN MODULE UNIT

Installation Manual

The module has two different type of connectors for embedding.

For embedding, the connectors are used for both mechanical and electrical connection.

Power supply and control signals are provided via connector DF40C-50DS-0.4V made by Hirose located on bottom side of module in Fig.1.

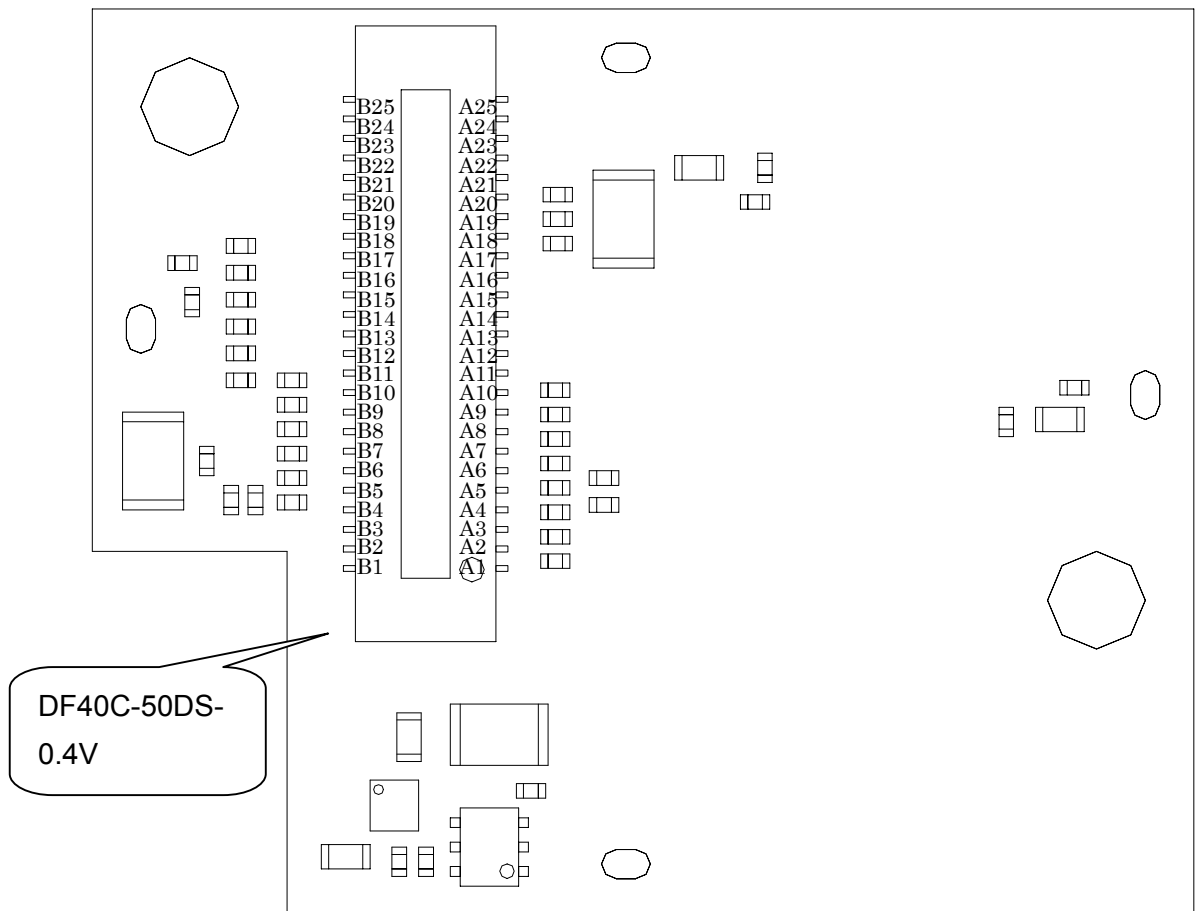


Fig.1 module outline (bottom view)

Table 1 Pin Layout of DF40C-50DS-0.4V

No.	Pin Name	I/O Type	No.	Pin Name	I/O Type
A1	GND	-	B1	GND	-
A2	D[15]	I/O	B2	D[14]	I/O
A3	D[13]	I/O	B3	D[12]	I/O
A4	D[11]	I/O	B4	D[10]	I/O
A5	D[9]	I/O	B5	D[8]	I/O
A6	D[7]	I/O	B6	D[6]	I/O
A7	D[5]	I/O	B7	D[4]	I/O
A8	D[3]	I/O	B8	D[2]	I/O
A9	D[1]	I/O	B9	D[0]	I/O
A10	GND	-	B10	GND	-
A11	A[9]	I	B11	A[10]	I
A12	A[7]	I	B12	A[8]	I
A13	A[5]	I	B13	A[6]	I
A14	A[3]	I	B14	A[4]	I
A15	A[1]	I	B15	A[2]	I
A16	GND	-	B16	A[0]	I
A17	PDn	I	B17	GND	-
A18	-CE[2]	I	B18	-CE[1]	I
A19	-IOWR	I	B19	-IORD	I
A20	-WE	I	B20	-OE	I
A21	RESET	I	B21	-IREQ	O
A22	-IOIS16	O	B22	-WAIT	O
A23	GND	-	B23	GND	-
A24	VCC3.3	-	B24	GND	-
A25	VCC3.3	-	B25	GND	-

2 antenna connectors (U.FL-R-SMT(10) by Hirose) are located on top side of module in Fig.2

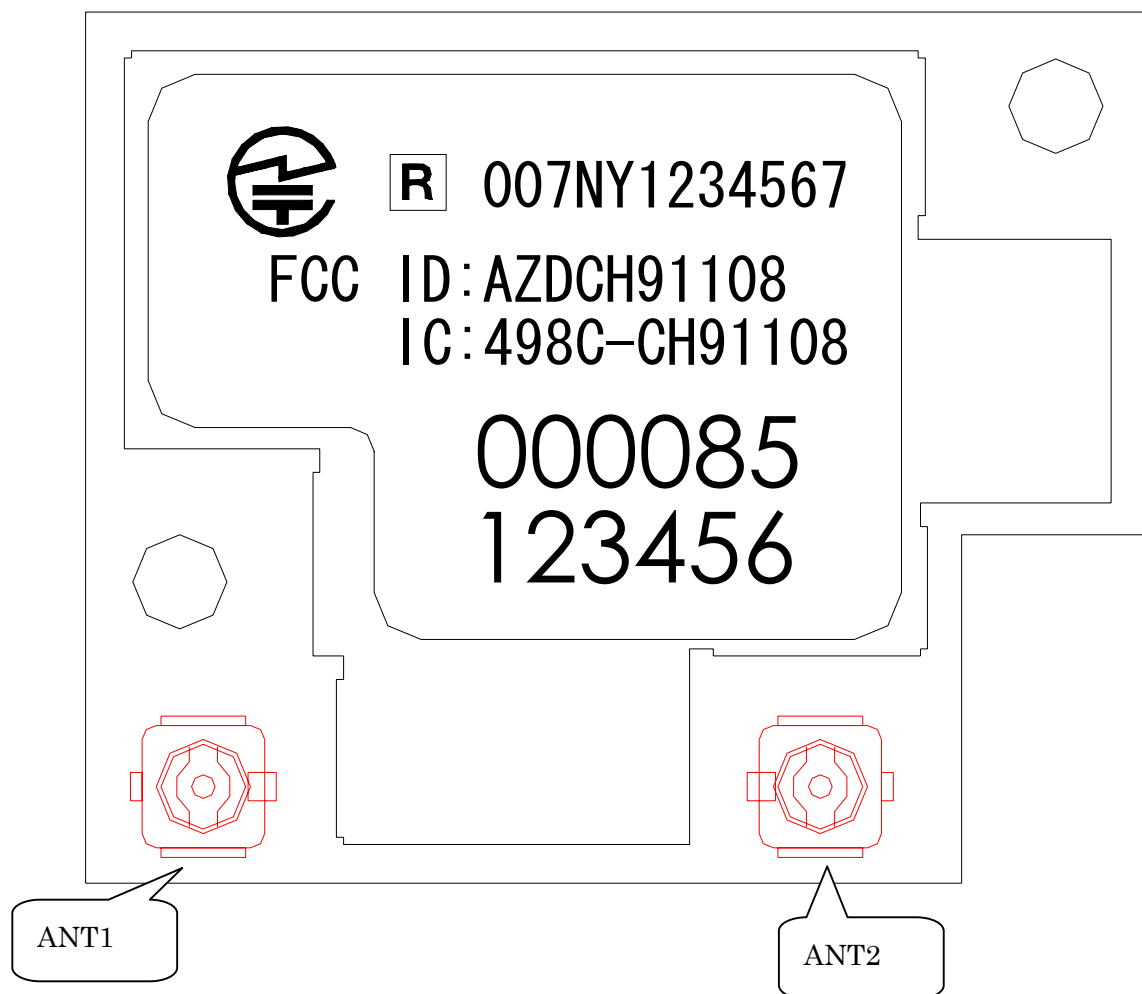


Fig.2 module outline (top view)

The 2 antenna connectors are named ANT1 and ANT2 as shown in Fig.2.
External antennas are connected to ANT1 or ANT2 or both via 50 Ohm Coaxial cable.
When only one antenna is used, non-used connector can be kept open.

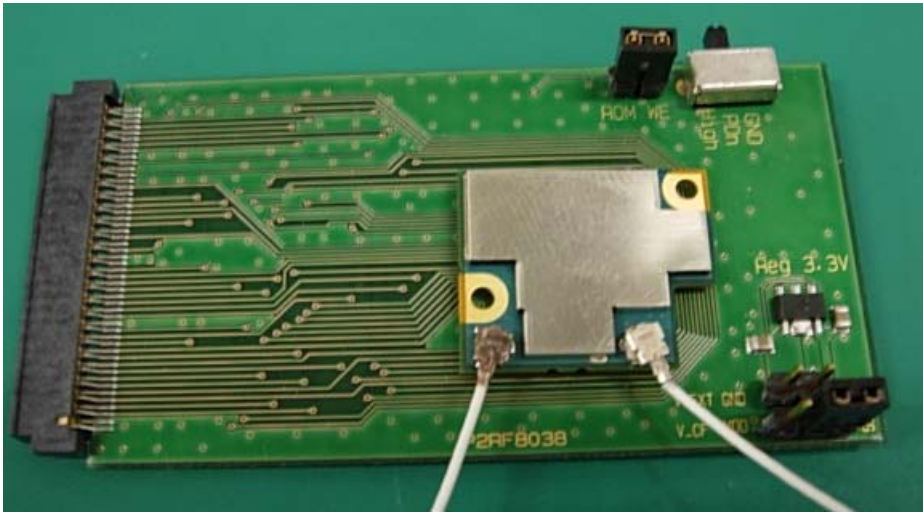


Fig.3 Example of Embedding

FCC WARNING

Changes or modifications not expressly approved by the party responsible for compliance could void the user's authority to operate the equipment.

NOTICE

This transmitter must not be co-located or operated in conjunction with any other antenna or transmitter.

This device complies with Part 15 of FCC Rules and RSS-Gen of IC Rules. Operation is subject to the following two conditions: (1) this device may not cause interference, and (2) this device must accept any interference, including interference that may cause undesired operation of this device.

As well as above necessary FCC/IC statements, applicable RF Exposure statements are required for users manual of final product.

[For Portable Use]

Example of RF Exposure Statement for portable equipment:

The available scientific evidence does not show that any health problems are associated with using low power wireless devices. There is no proof, however, that these low power wireless devices are absolutely safe. Low power Wireless devices emit low levels of radio frequency energy (RF) in the microwave range while being used. Whereas high levels of RF can produce health effects (by heating tissue), exposure to low-level RF that does not produce heating effects causes no known adverse health effects. Many studies of low-level RF exposures have not found any biological effects. Some studies have suggested that some biological effects might occur, but such findings have not been confirmed by additional research. (Model Name of final product) has been tested and found to comply with FCC/IC radiation exposure limits set forth for an uncontrolled equipment and meets the FCC radio frequency (RF) Exposure Guidelines in Supplement C to OET65 and RSS-102 of the IC radio frequency (RF) Exposure rules.

[For Mobile Use]

This equipment complies with FCC/IC radiation exposure limits set forth for uncontrolled equipment and meets the FCC radio frequency (RF) Exposure Guidelines in Supplement C to OET65 and RSS-102 of the IC radio frequency (RF) Exposure rules. This equipment should be installed and operated with at least 20cm and more between the radiator and person's body (excluding extremities: hands, wrists, feet and ankles).

Declaration of conforming to R&TTE requirement

Česky [Czech]

CANON INC. tímto prohlašuje, že tento CH91108 je ve shodě se základními požadavky a dalšími příslušnými ustanoveními směrnice 1999/5/ES.

Dansk [Danish]

Undertegnede CANON INC. erklærer herved, at følgende udstyr CH91108 overholder de væsentlige krav og øvrige relevante krav i direktiv 1999/5/EF.

Deutsch [German]

Hiermit erklärt CANON INC. , dass sich das Gerät CH91108 in Übereinstimmung mit den grundlegenden Anforderungen und den übrigen einschlägigen Bestimmungen der Richtlinie 1999/5/EG befindet.

Eesti [Estonian]

Käesolevaga kinnitab CANON INC. seadme CH91108 vastavust direktiivi 1999/5/EÜ põhinõuetele ja nimetatud direktiivist tulenevatele teistele asjakohastele sätetele.

English

Hereby, CANON INC. , declares that this CH91108 is in compliance with the essential requirements and other relevant provisions of Directive 1999/5/EC.

Español [Spanish]

Por medio de la presente CANON INC. declara que el CH91108 cumple con los requisitos esenciales y cualesquiera otras disposiciones aplicables o exigibles de la Directiva 1999/5/CE.

Ελληνική [Greek]

ΜΕ ΤΗΝ ΠΑΡΟΥΣΑ CANON INC. ΔΗΛΩΝΕΙ ΟΤΙ Ο CH91108 ΣΥΜΜΟΡΦΩΝΕΤΑΙ ΠΡΟΣ ΤΙΣ ΟΥΣΙΩΔΕΙΣ ΑΠΑΙΤΗΣΕΙΣ ΚΑΙ ΤΙΣ ΛΟΙΠΕΣ ΣΧΕΤΙΚΕΣ ΔΙΑΤΑΞΕΙΣ ΤΗΣ ΟΔΗΓΙΑΣ 1999/5/ΕΚ.

Français [French]

Par la présente CANON INC. déclare que l'appareil CH91108 est conforme aux exigences essentielles et aux autres dispositions pertinentes de la directive 1999/5/CE.

Italiano [Italian]

Con la presente CANON INC. dichiara che questo CH91108 è conforme ai requisiti essenziali ed alle altre disposizioni pertinenti stabilite dalla direttiva 1999/5/CE.

Latviski [Latvian]

Ar šo CANON INC. deklarē, ka CH91108 atbilst Direktīvas 1999/5/EK būtiskajām prasībām un citiem ar to saistītajiem noteikumiem.

Lietuvių [Lithuanian]

Šiuo CANON INC. deklaruoja, kad šis CH91108 atitinka esminius reikalavimus ir kitas 1999/5/EB Direktyvos nuostatas.

Nederlands [Dutch]

Hierbij verklaart CANON INC. dat het toestel CH91108 in overeenstemming is met de essentiële eisen en de andere relevante bepalingen van richtlijn 1999/5/EG.

Malti [Maltese]

Hawnhekk, CANON INC. , jiddikjara li dan CH91108 jikkonforma mal-ħtiġijiet essenzjali u ma provvedimenti oħrajn rilevanti li hemm fid-Dirrettiva 1999/5/EC.

Magyar [Hungarian]

Alulírott, CANON INC. nyilatkozom, hogy a CH91108 megfelel a vonatkozó alapvető követelményeknek és az 1999/5/EC irányelv egyéb előírásainak.

Português [Portuguese]

CANON INC. declara que este CH91108 está conforme com os requisitos essenciais e outras disposições da Directiva 1999/5/CE.

Slovensko [Slovenian]

CANON INC. izjavlja, da je ta CH91108 v skladu z bistvenimi zahtevami in ostalimi relevantnimi določili direktive 1999/5/ES.

Slovensky [Slovak]

CANON INC. týmto vyhlasuje, že CH91108 spĺňa základné požiadavky a všetky príslušné ustanovenia Smernice 1999/5/ES.

Suomi [Finnish]

CANON INC. vakuuttaa täten että CH91108 tyyppinen laite on direktiivin 1999/5/EY oleellisten vaatimusten ja sitä koskevien direktiivin muiden ehtojen mukainen.

Svenska [Swedish]

Härmed intygar CANON INC. att denna CH91108 står i överensstämmelse med de väsentliga egenskapskrav och övriga relevanta bestämmelser som framgår av direktiv 1999/5/EG.

Íslenska [Icelandic]

Hér með lýsir CANON INC. yfir því að CH91108 er í samræmi við grunnkröfur og aðrar kröfur, sem gerðar eru í tilskipun 1999/5/EC.

Norsk [Norwegian]

CANON INC. erklærer herved at utstyret CH91108 er i samsvar med de grunnleggende krav og øvrige relevante krav i direktiv 1999/5/EF.