

APPENDIX 2 : SAR Measurement data

1. Evaluation procedure

The evaluation was performed with the following procedure:

Step 1: Measurement of the E-field at a fixed location above the ear point or central position of flat phantom was used as a reference value for assessing the power drop.

Step 2: The SAR distribution at the exposed side of head or body position was measured at a distance of each device from the inner surface of the shell. The area covered the entire dimension of the antenna of EUT and the horizontal grid spacing was 15 mm x 15 mm . Based on these data, the area of the maximum absorption was determined by spline interpolation.

Step 3: Around this point found in the Step 2 (area scan) , a volume of 30mm x 30mm x 30mm was assessed by measuring 7 x 7 x 7 points. And for any secondary peaks found in the Step2 which are within 2dB of maximum peak (level more than ambient noise (≥ 0.012 W/kg)) and not with this Step3 (Zoom scan) is repeated. On the basis of this data set, the spatial peak SAR value was evaluated under the following procedure:

(1). The data at the surface were extrapolated, since the center of the dipoles is 2.7mm away from the tip of the probe and the distance between the surface and the lowest measuring point is 1.3 mm. The extrapolation was based on a least square algorithm [4]. A polynomial of the fourth order was calculated through the points in z-axes. This polynomial was then used to evaluate the points between the surface and the probe tip.

(2). The maximum interpolated value was searched with a straightforward algorithm. Around this maximum the SAR values averaged over the spatial volumes (1 g or 10 g) were computed by the 3D-Spline interpolation algorithm. The 3D-Spline is composed of three one-dimensional splines with the "Not a knot"-condition (in x, y and z-directions) [4], [5]. The volume was integrated with the trapezoidal-algorithm. One thousand points (10 x 10 x 10) were interpolated to calculate the average.

(3). All neighboring volumes were evaluated until no neighboring volume with a higher average value was found.

Step 4: Re-measurement of the E-field at the same location as in Step 1.

UL Japan, Inc.

Head Office EMC Lab.

4383-326 Asama-cho, Ise-shi, Mie-ken 516-0021 JAPAN

Telephone : +81 596 24 8116

Facsimile : +81 596 24 8124

2. Measurement data (Body SAR 2450MHz)
CH91108 / Body / Front / 11b CCK(11Mbps) / 2437MHz

Crest factor: 1

Medium: M2450 Medium parameters used: $f = 2450$ MHz; $\sigma = 1.96$ mho/m; $\epsilon_r = 50.4$; $\rho = 1000$ kg/m³

Phantom section: Flat Section

DASY4 Configuration:

- Probe: EX3DV3 - SN3507; ConvF(7.9, 7.9, 7.9); Calibrated: 2008/01/25
- Sensor-Surface: 2mm (Mechanical Surface Detection)
- Phantom: SAM 1196
- Measurement SW: DASY4, V4.7 Build 55; Postprocessing SW: SEMCAD, V1.8 Build 176

Area Scan (81x91x1): Measurement grid: dx=15mm, dy=15mm

Maximum value of SAR (interpolated) = 0.240 mW/g

Zoom Scan (7x7x7)/Cube 0: Measurement grid: dx=5mm, dy=5mm, dz=5mm

Reference Value = 9.17 V/m; Power Drift = -0.190 dB

Peak SAR (extrapolated) = 0.346 W/kg

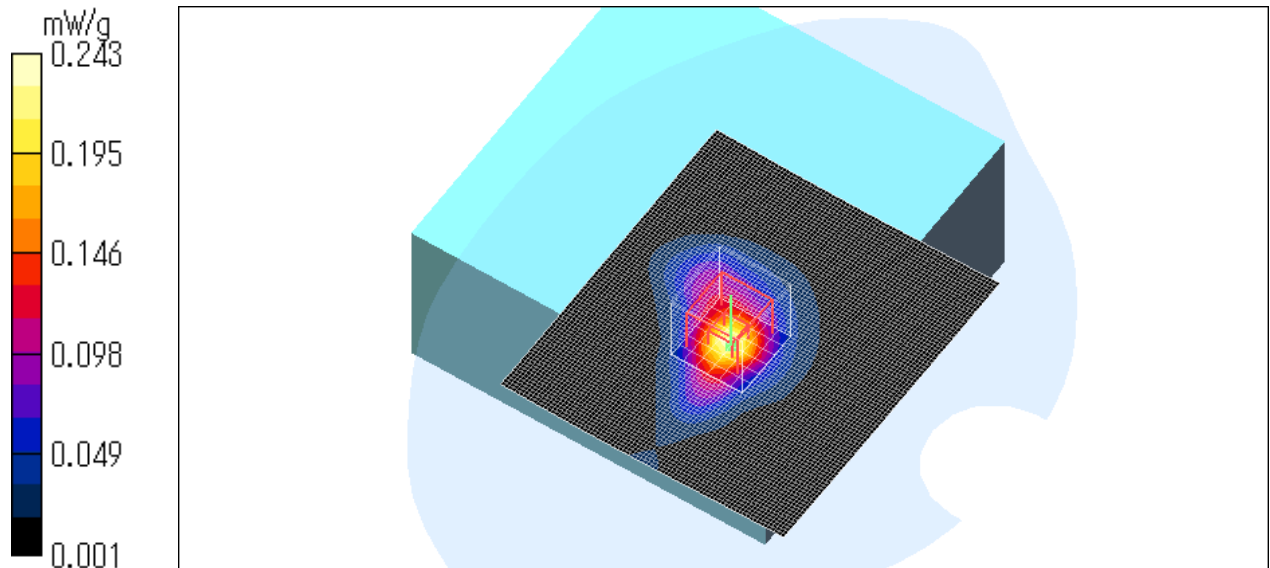
SAR(1 g) = 0.158 mW/g; SAR(10 g) = 0.076 mW/g

Maximum value of SAR (measured) = 0.243 mW/g

Test Date = 06/18/08

Ambient Temperature = 24.5degree.c

Liquid Temperature = Before 24.0 degree.C , After 24.0 degree.C



UL Japan, Inc.

Head Office EMC Lab.

4383-326 Asama-cho, Ise-shi, Mie-ken 516-0021 JAPAN

Telephone : +81 596 24 8116

Facsimile : +81 596 24 8124

CH91108 / Body / Rear / 11b CCK(11Mbps) / 2437MHz

Crest factor: 1

Medium: M2450 Medium parameters used: $f = 2450$ MHz; $\sigma = 1.96$ mho/m; $\epsilon_r = 50.4$; $\rho = 1000$ kg/m³

Phantom section: Flat Section

DASY4 Configuration:

- Probe: EX3DV3 - SN3507; ConvF(7.9, 7.9, 7.9); Calibrated: 2008/01/25

- Sensor-Surface: 2mm (Mechanical Surface Detection)

- Phantom: SAM 1196

- Measurement SW: DASY4, V4.7 Build 55; Postprocessing SW: SEMCAD, V1.8 Build 176

Area Scan (81x91x1): Measurement grid: dx=15mm, dy=15mm

Maximum value of SAR (interpolated) = 0.080 mW/g

Zoom Scan (7x7x7)/Cube 0: Measurement grid: dx=5mm, dy=5mm, dz=5mm

Reference Value = 4.05 V/m; Power Drift = -0.195 dB

Peak SAR (extrapolated) = 0.104 W/kg

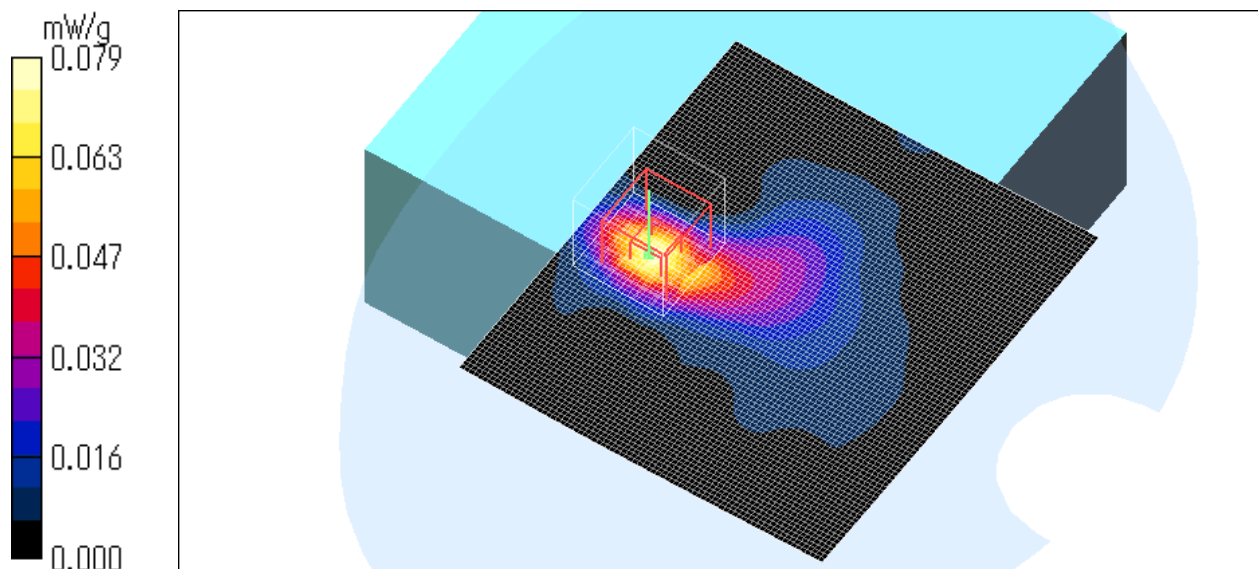
SAR(1 g) = 0.054 mW/g; SAR(10 g) = 0.025 mW/g

Maximum value of SAR (measured) = 0.079 mW/g

Test Date = 06/18/08

Ambient Temperature = 24.5degree.c

Liquid Temperature = Before 23.6 degree.C , After 23.6 degree.C



UL Japan, Inc.

Head Office EMC Lab.

4383-326 Asama-cho, Ise-shi, Mie-ken 516-0021 JAPAN

Telephone : +81 596 24 8116

Facsimile : +81 596 24 8124

CH91108 / Body / Bottom / 11b CCK(11Mbps) / 2437MHz

Crest factor: 1

Medium: M2450 Medium parameters used: $f = 2450$ MHz; $\sigma = 1.96$ mho/m; $\epsilon_r = 50.4$; $\rho = 1000$ kg/m³

Phantom section: Flat Section

DASY4 Configuration:

- Probe: EX3DV3 - SN3507; ConvF(7.9, 7.9, 7.9); Calibrated: 2008/01/25

- Sensor-Surface: 2mm (Mechanical Surface Detection)

- Phantom: SAM 1196

- Measurement SW: DASY4, V4.7 Build 55; Postprocessing SW: SEMCAD, V1.8 Build 176

Area Scan (81x91x1): Measurement grid: dx=15mm, dy=15mm

Maximum value of SAR (interpolated) = 0.074 mW/g

Zoom Scan (7x7x7)/Cube 0: Measurement grid: dx=5mm, dy=5mm, dz=5mm

Reference Value = 5.55 V/m; Power Drift = -0.014 dB

Peak SAR (extrapolated) = 0.098 W/kg

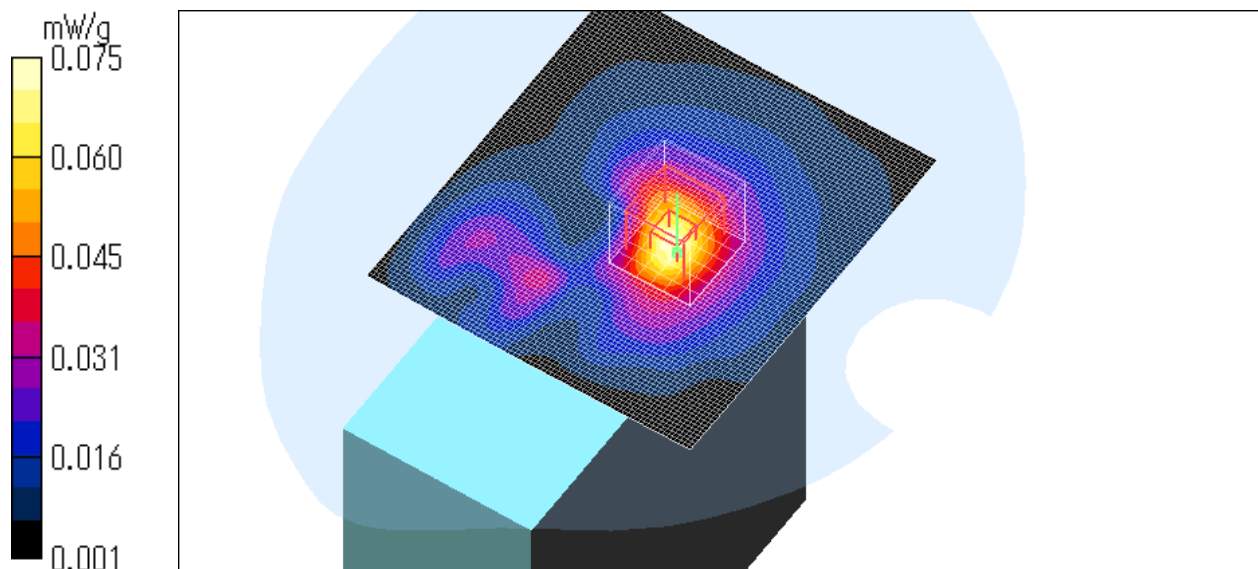
SAR(1 g) = 0.054 mW/g; SAR(10 g) = 0.028 mW/g

Maximum value of SAR (measured) = 0.075 mW/g

Test Date = 06/18/08

Ambient Temperature = 24.5degree.c

Liquid Temperature = Before 23.8 degree.C , After 23.6 degree.C



UL Japan, Inc.

Head Office EMC Lab.

4383-326 Asama-cho, Ise-shi, Mie-ken 516-0021 JAPAN

Telephone : +81 596 24 8116

Facsimile : +81 596 24 8124

CH91108 / Body / Right side / 11b CCK(11Mbps) / 2437MHz

Crest factor: 1

Medium: M2450 Medium parameters used: $f = 2450$ MHz; $\sigma = 1.96$ mho/m; $\epsilon_r = 50.4$; $\rho = 1000$ kg/m³

Phantom section: Flat Section

DASY4 Configuration:

- Probe: EX3DV3 - SN3507; ConvF(7.9, 7.9, 7.9); Calibrated: 2008/01/25

- Sensor-Surface: 2mm (Mechanical Surface Detection)

- Phantom: SAM 1196

- Measurement SW: DASY4, V4.7 Build 55; Postprocessing SW: SEMCAD, V1.8 Build 176

Area Scan (81x91x1): Measurement grid: dx=15mm, dy=15mm

Maximum value of SAR (interpolated) = 0.127 mW/g

Zoom Scan (7x7x7)/Cube 0: Measurement grid: dx=5mm, dy=5mm, dz=5mm

Reference Value = 7.39 V/m; Power Drift = -0.086 dB

Peak SAR (extrapolated) = 0.187 W/kg

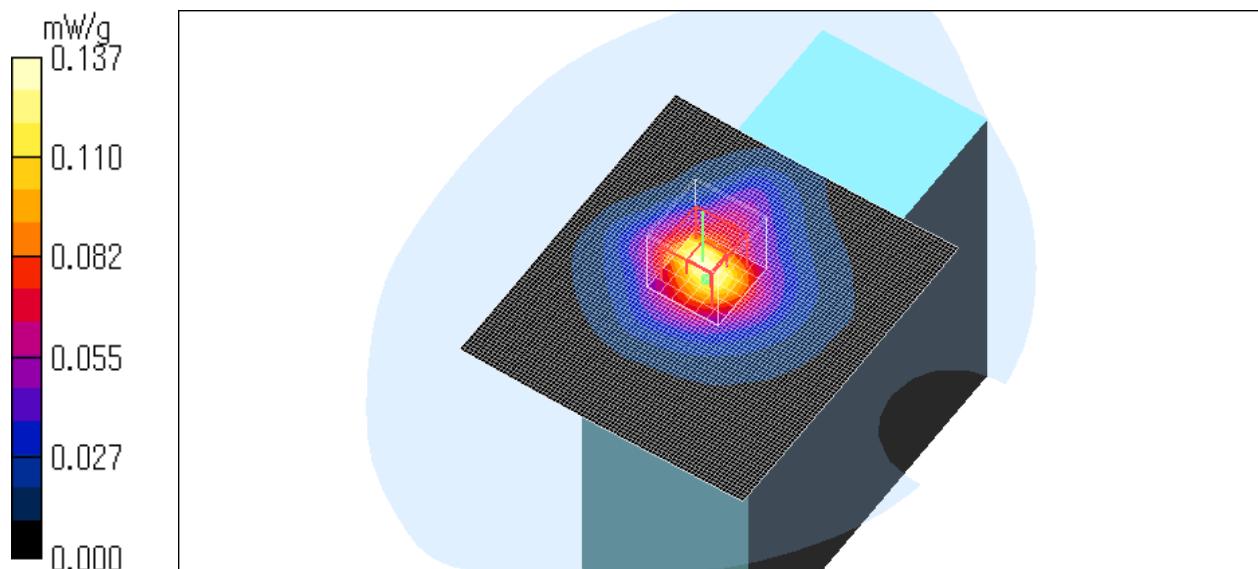
SAR(1 g) = 0.096 mW/g; SAR(10 g) = 0.050 mW/g

Maximum value of SAR (measured) = 0.137 mW/g

Test Date = 06/18/08

Ambient Temperature = 24.5degree.c

Liquid Temperature = Before 23.9 degree.C , After 23.8 degree.C



UL Japan, Inc.

Head Office EMC Lab.

4383-326 Asama-cho, Ise-shi, Mie-ken 516-0021 JAPAN

Telephone : +81 596 24 8116

Facsimile : +81 596 24 8124

CH91108 / Body / Front / 11b CCK(11Mbps) / 2412MHz

Crest factor: 1

Medium: M2450 Medium parameters used: $f = 2450$ MHz; $\sigma = 1.96$ mho/m; $\epsilon_r = 50.4$; $\rho = 1000$ kg/m³

Phantom section: Flat Section

DASY4 Configuration:

- Probe: EX3DV3 - SN3507; ConvF(7.9, 7.9, 7.9); Calibrated: 2008/01/25

- Sensor-Surface: 2mm (Mechanical Surface Detection)

- Phantom: SAM 1196

- Measurement SW: DASY4, V4.7 Build 55; Postprocessing SW: SEMCAD, V1.8 Build 176

Area Scan (81x91x1): Measurement grid: dx=15mm, dy=15mm

Maximum value of SAR (interpolated) = 0.294 mW/g

Zoom Scan (7x7x7)/Cube 0: Measurement grid: dx=5mm, dy=5mm, dz=5mm

Reference Value = 8.32 V/m; Power Drift = -0.160 dB

Peak SAR (extrapolated) = 0.464 W/kg

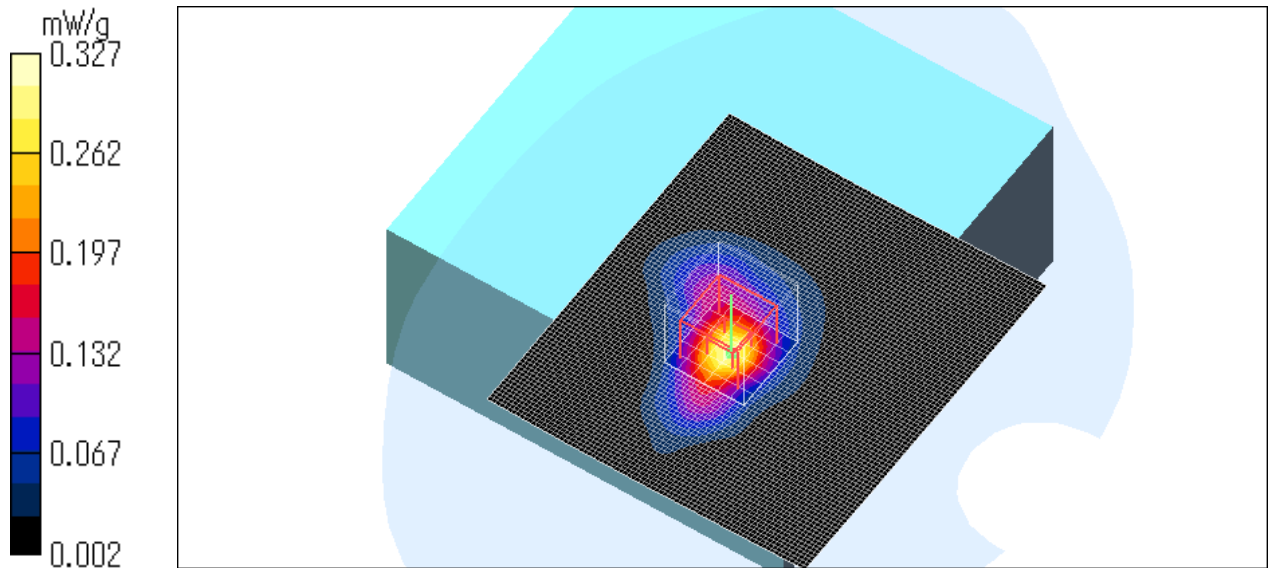
SAR(1 g) = 0.209 mW/g; SAR(10 g) = 0.099 mW/g

Maximum value of SAR (measured) = 0.327 mW/g

Test Date = 06/18/08

Ambient Temperature = 24.5degree.c

Liquid Temperature = Before 23.6 degree.C , After 23.7 degree.C



UL Japan, Inc.

Head Office EMC Lab.

4383-326 Asama-cho, Ise-shi, Mie-ken 516-0021 JAPAN

Telephone : +81 596 24 8116

Facsimile : +81 596 24 8124

CH91108 / Body / Front / 11b CCK(11Mbps) / 2462MHz

Crest factor: 1

Medium: M2450 Medium parameters used: $f = 2450$ MHz; $\sigma = 1.96$ mho/m; $\epsilon_r = 50.4$; $\rho = 1000$ kg/m³

Phantom section: Flat Section

DASY4 Configuration:

- Probe: EX3DV3 - SN3507; ConvF(7.9, 7.9, 7.9); Calibrated: 2008/01/25

- Sensor-Surface: 2mm (Mechanical Surface Detection)

- Phantom: SAM 1196

- Measurement SW: DASY4, V4.7 Build 55; Postprocessing SW: SEMCAD, V1.8 Build 176

Area Scan (81x91x1): Measurement grid: dx=15mm, dy=15mm

Maximum value of SAR (interpolated) = 0.280 mW/g

Zoom Scan (7x7x7)/Cube 0: Measurement grid: dx=5mm, dy=5mm, dz=5mm

Reference Value = 7.33 V/m; Power Drift = -0.121 dB

Peak SAR (extrapolated) = 0.407 W/kg

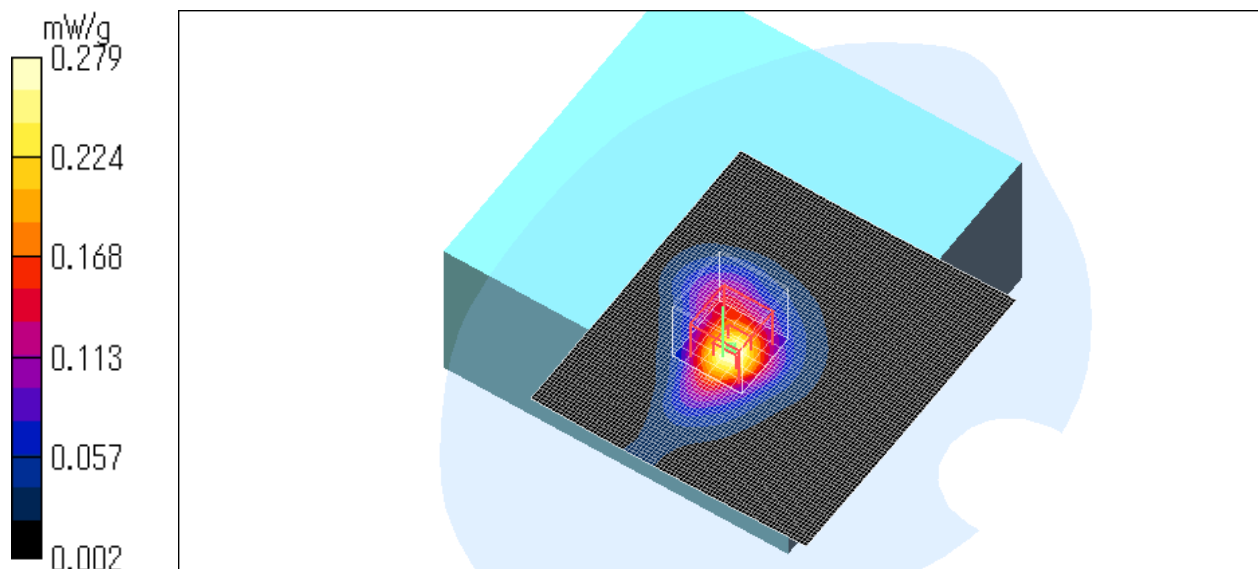
SAR(1 g) = 0.187 mW/g; SAR(10 g) = 0.092 mW/g

Maximum value of SAR (measured) = 0.279 mW/g

Test Date = 06/18/08

Ambient Temperature = 24.5degree.c

Liquid Temperature = Before 23.7 degree.C , After 23.7 degree.C



UL Japan, Inc.

Head Office EMC Lab.

4383-326 Asama-cho, Ise-shi, Mie-ken 516-0021 JAPAN

Telephone : +81 596 24 8116

Facsimile : +81 596 24 8124

CH91108 / Body / Front / 11g BPSK(6Mbps) / 2437MHz

Crest factor: 1

Medium: M2450 Medium parameters used: $f = 2450$ MHz; $\sigma = 1.96$ mho/m; $\epsilon_r = 50.4$; $\rho = 1000$ kg/m³

Phantom section: Flat Section

DASY4 Configuration:

- Probe: EX3DV3 - SN3507; ConvF(7.9, 7.9, 7.9); Calibrated: 2008/01/25

- Sensor-Surface: 2mm (Mechanical Surface Detection)

- Phantom: SAM 1196

- Measurement SW: DASY4, V4.7 Build 55; Postprocessing SW: SEMCAD, V1.8 Build 176

Area Scan (81x91x1): Measurement grid: dx=15mm, dy=15mm

Maximum value of SAR (interpolated) = 0.229 mW/g

Zoom Scan (7x7x7)/Cube 0: Measurement grid: dx=5mm, dy=5mm, dz=5mm

Reference Value = 7.64 V/m; Power Drift = -0.113 dB

Peak SAR (extrapolated) = 0.336 W/kg

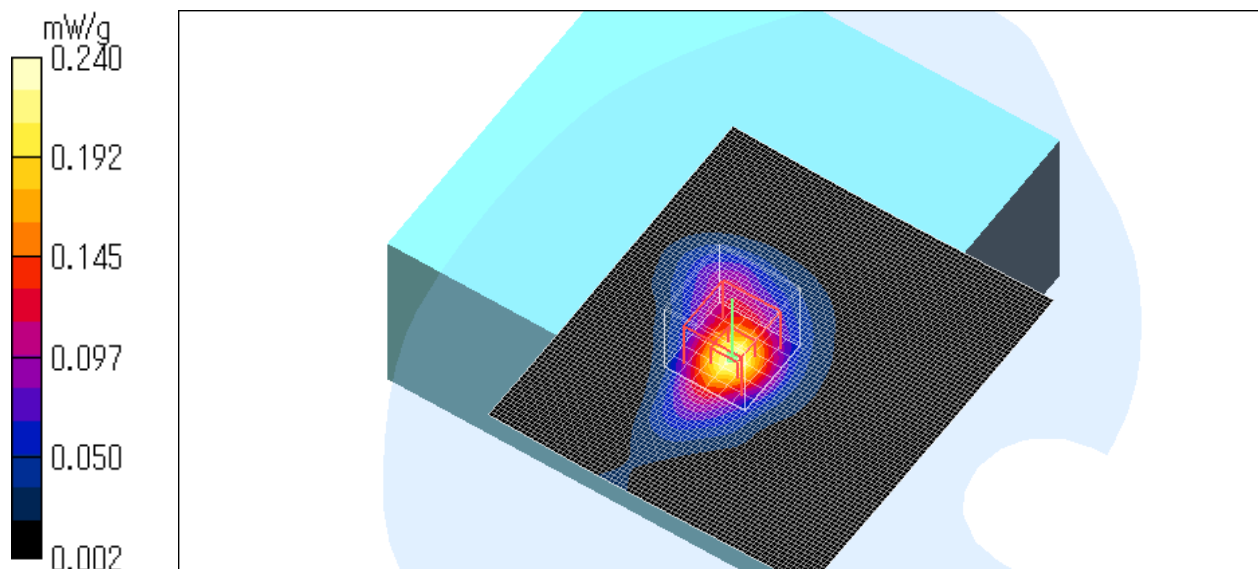
SAR(1 g) = 0.154 mW/g; SAR(10 g) = 0.075 mW/g

Maximum value of SAR (measured) = 0.240 mW/g

Test Date = 06/18/08

Ambient Temperature = 24.5degree.c

Liquid Temperature = Before 23.7 degree.C , After 23.7 degree.C



UL Japan, Inc.

Head Office EMC Lab.

4383-326 Asama-cho, Ise-shi, Mie-ken 516-0021 JAPAN

Telephone : +81 596 24 8116

Facsimile : +81 596 24 8124

CH91108 / Body / Front / 11g QPSK(12Mbps) / 2437MHz

Crest factor: 1

Medium: M2450 Medium parameters used: $f = 2450$ MHz; $\sigma = 1.96$ mho/m; $\epsilon_r = 50.4$; $\rho = 1000$ kg/m³

Phantom section: Flat Section

DASY4 Configuration:

- Probe: EX3DV3 - SN3507; ConvF(7.9, 7.9, 7.9); Calibrated: 2008/01/25

- Sensor-Surface: 2mm (Mechanical Surface Detection)

- Phantom: SAM 1196

- Measurement SW: DASY4, V4.7 Build 55; Postprocessing SW: SEMCAD, V1.8 Build 176

Area Scan (81x91x1): Measurement grid: dx=15mm, dy=15mm

Maximum value of SAR (interpolated) = 0.225 mW/g

Zoom Scan (7x7x7)/Cube 0: Measurement grid: dx=5mm, dy=5mm, dz=5mm

Reference Value = 7.33 V/m; Power Drift = -0.120 dB

Peak SAR (extrapolated) = 0.338 W/kg

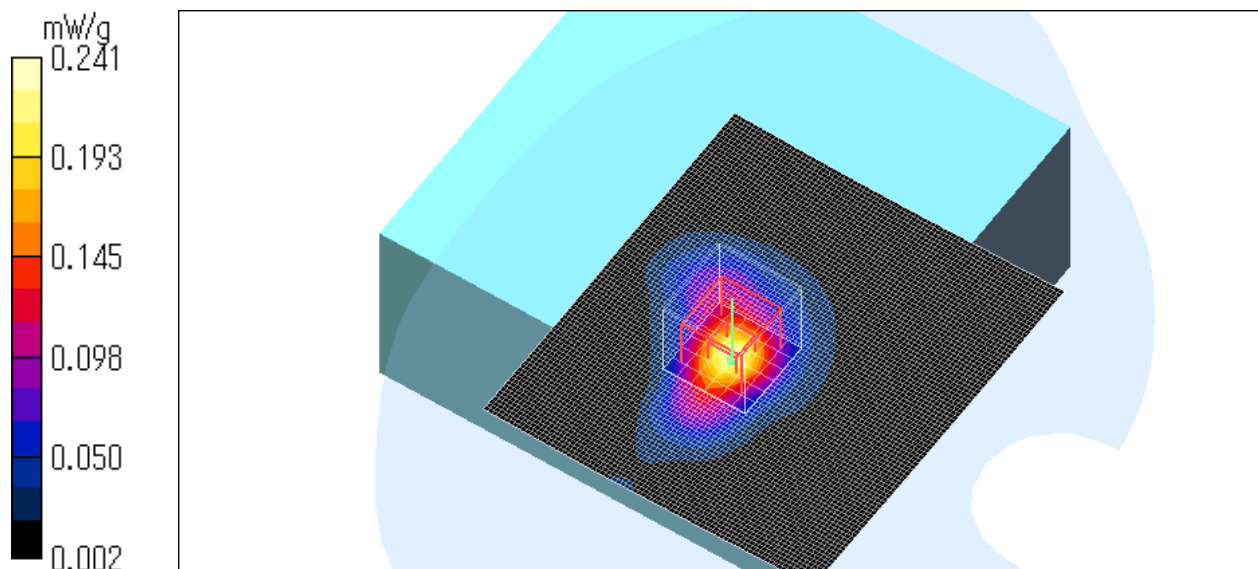
SAR(1 g) = 0.154 mW/g; SAR(10 g) = 0.075 mW/g

Maximum value of SAR (measured) = 0.241 mW/g

Test Date = 06/18/08

Ambient Temperature = 24.5degree.c

Liquid Temperature = Before 23.7 degree.C , After 23.7 degree.C



UL Japan, Inc.

Head Office EMC Lab.

4383-326 Asama-cho, Ise-shi, Mie-ken 516-0021 JAPAN

Telephone : +81 596 24 8116

Facsimile : +81 596 24 8124

CH91108 / Body / Front / 11g 16QAM(24Mbps) / 2437MHz

Crest factor: 1

Medium: M2450 Medium parameters used: $f = 2450$ MHz; $\sigma = 1.96$ mho/m; $\epsilon_r = 50.4$; $\rho = 1000$ kg/m³

Phantom section: Flat Section

DASY4 Configuration:

- Probe: EX3DV3 - SN3507; ConvF(7.9, 7.9, 7.9); Calibrated: 2008/01/25

- Sensor-Surface: 2mm (Mechanical Surface Detection)

- Phantom: SAM 1196

- Measurement SW: DASY4, V4.7 Build 55; Postprocessing SW: SEMCAD, V1.8 Build 176

Area Scan (81x91x1): Measurement grid: dx=15mm, dy=15mm

Maximum value of SAR (interpolated) = 0.264 mW/g

Zoom Scan (7x7x7)/Cube 0: Measurement grid: dx=5mm, dy=5mm, dz=5mm

Reference Value = 6.59 V/m; Power Drift = -0.165 dB

Peak SAR (extrapolated) = 0.379 W/kg

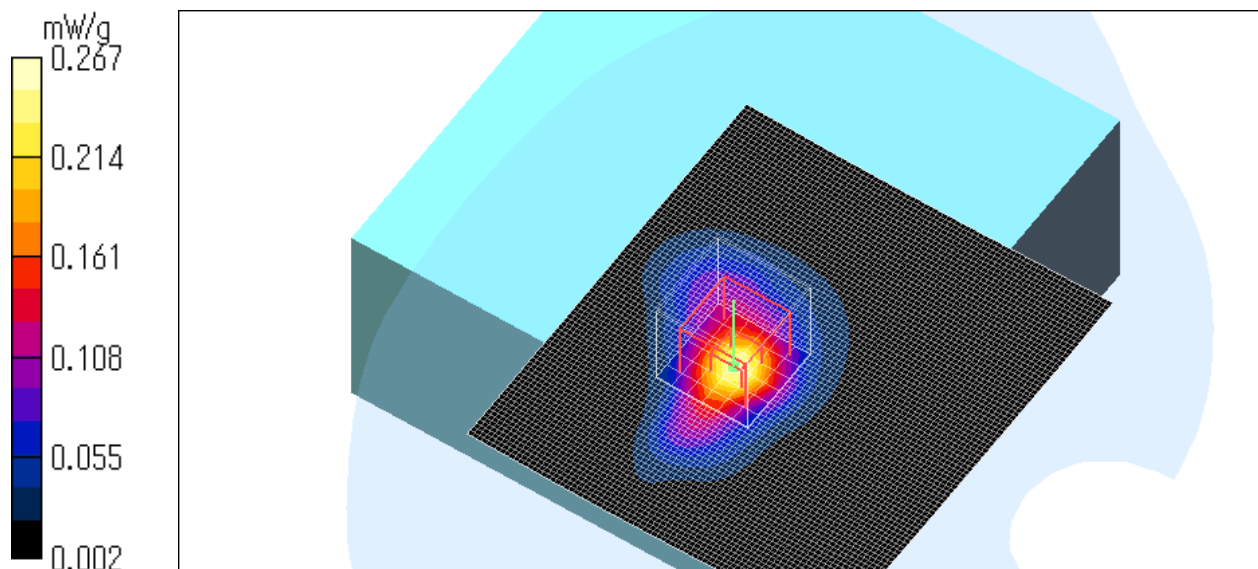
SAR(1 g) = 0.171 mW/g; SAR(10 g) = 0.081 mW/g

Maximum value of SAR (measured) = 0.267 mW/g

Test Date = 06/18/08

Ambient Temperature = 24.5degree.c

Liquid Temperature = Before 23.7 degree.C , After 23.7 degree.C



UL Japan, Inc.

Head Office EMC Lab.

4383-326 Asama-cho, Ise-shi, Mie-ken 516-0021 JAPAN

Telephone : +81 596 24 8116

Facsimile : +81 596 24 8124

CH91108 / Body / Front / 11g 64QAM(54Mbps) / 2437MHz

Crest factor: 1

Medium: M2450 Medium parameters used: $f = 2450$ MHz; $\sigma = 1.96$ mho/m; $\epsilon_r = 50.4$; $\rho = 1000$ kg/m³

Phantom section: Flat Section

DASY4 Configuration:

- Probe: EX3DV3 - SN3507; ConvF(7.9, 7.9, 7.9); Calibrated: 2008/01/25

- Sensor-Surface: 2mm (Mechanical Surface Detection)

- Phantom: SAM 1196

- Measurement SW: DASY4, V4.7 Build 55; Postprocessing SW: SEMCAD, V1.8 Build 176

Area Scan (81x91x1): Measurement grid: dx=15mm, dy=15mm

Maximum value of SAR (interpolated) = 0.242 mW/g

Zoom Scan (7x7x7)/Cube 0: Measurement grid: dx=5mm, dy=5mm, dz=5mm

Reference Value = 8.82 V/m; Power Drift = -0.208 dB

Peak SAR (extrapolated) = 0.357 W/kg

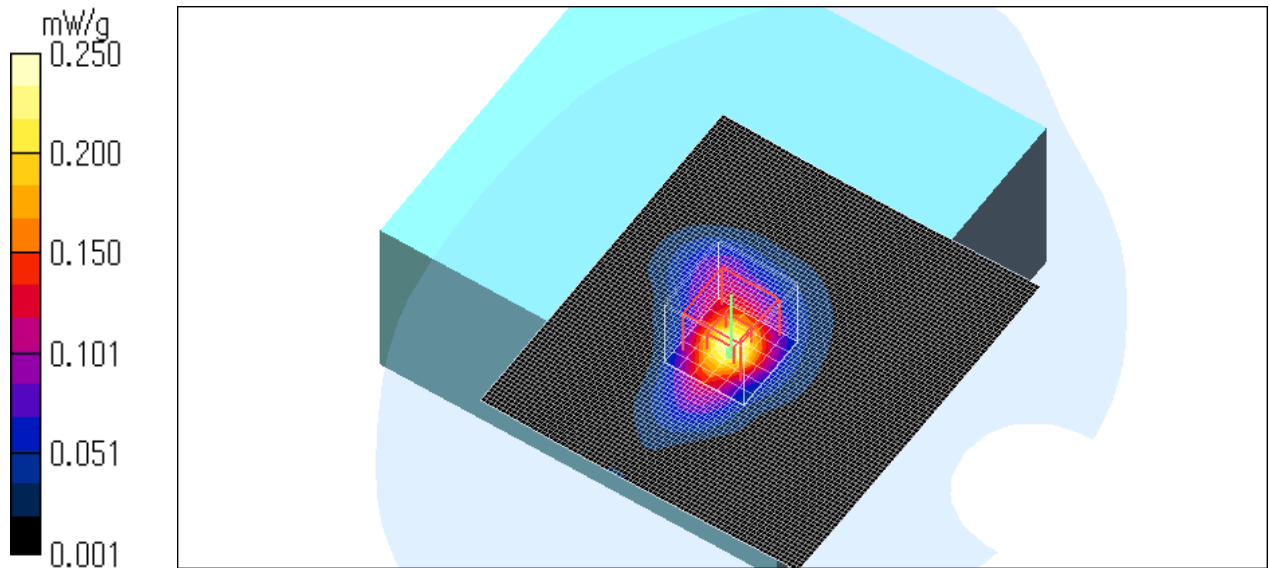
SAR(1 g) = 0.164 mW/g; SAR(10 g) = 0.079 mW/g

Maximum value of SAR (measured) = 0.250 mW/g

Test Date = 06/18/08

Ambient Temperature = 24.5degree.c

Liquid Temperature = Before 23.7 degree.C , After 23.7 degree.C



UL Japan, Inc.

Head Office EMC Lab.

4383-326 Asama-cho, Ise-shi, Mie-ken 516-0021 JAPAN

Telephone : +81 596 24 8116

Facsimile : +81 596 24 8124

CH91108 / Body / Rear / 11g 16QAM(24Mbps) / 2437MHz

Crest factor: 1

Medium: M2450 Medium parameters used: $f = 2450$ MHz; $\sigma = 1.96$ mho/m; $\epsilon_r = 50.4$; $\rho = 1000$ kg/m³

Phantom section: Flat Section

DASY4 Configuration:

- Probe: EX3DV3 - SN3507; ConvF(7.9, 7.9, 7.9); Calibrated: 2008/01/25

- Sensor-Surface: 2mm (Mechanical Surface Detection)

- Phantom: SAM 1196

- Measurement SW: DASY4, V4.7 Build 55; Postprocessing SW: SEMCAD, V1.8 Build 176

Area Scan (81x91x1): Measurement grid: dx=15mm, dy=15mm

Maximum value of SAR (interpolated) = 0.043 mW/g

Zoom Scan (7x7x7)/Cube 0: Measurement grid: dx=5mm, dy=5mm, dz=5mm

Reference Value = 3.05 V/m; Power Drift = -0.128 dB

Peak SAR (extrapolated) = 0.053 W/kg

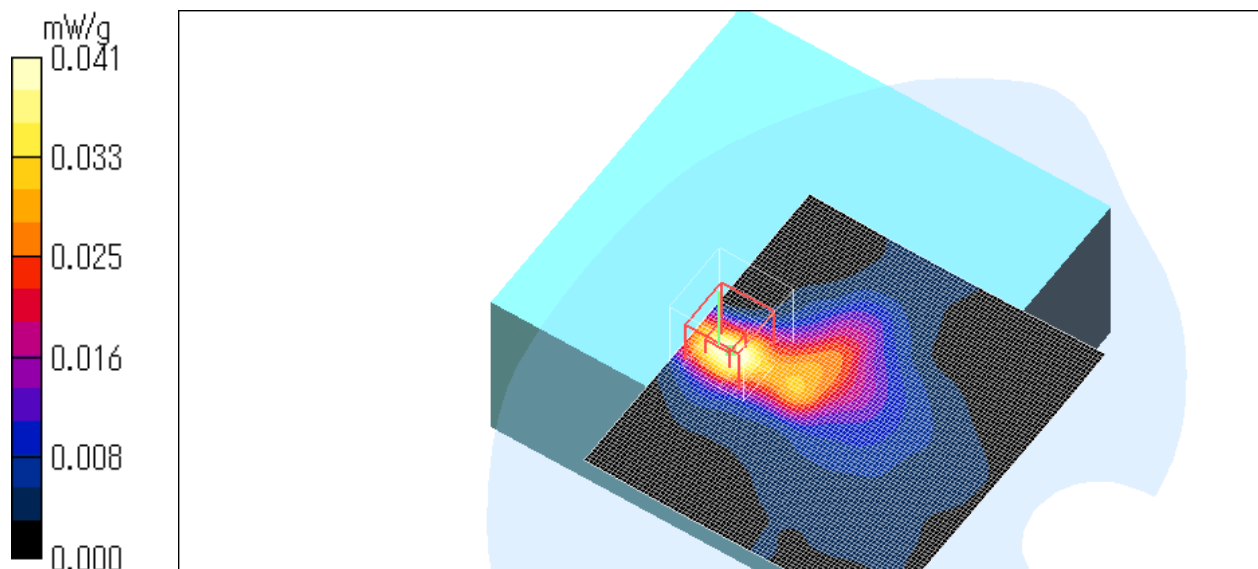
SAR(1 g) = 0.029 mW/g; SAR(10 g) = 0.014 mW/g

Maximum value of SAR (measured) = 0.041 mW/g

Test Date = 06/18/08

Ambient Temperature = 24.5degree.c

Liquid Temperature = Before 23.7 degree.C , After 23.7 degree.C



UL Japan, Inc.

Head Office EMC Lab.

4383-326 Asama-cho, Ise-shi, Mie-ken 516-0021 JAPAN

Telephone : +81 596 24 8116

Facsimile : +81 596 24 8124

CH91108 / Body / Bottom / 11g 16QAM(24Mbps) / 2437MHz

Crest factor: 1

Medium: M2450 Medium parameters used: $f = 2450$ MHz; $\sigma = 1.96$ mho/m; $\epsilon_r = 50.4$; $\rho = 1000$ kg/m³

Phantom section: Flat Section

DASY4 Configuration:

- Probe: EX3DV3 - SN3507; ConvF(7.9, 7.9, 7.9); Calibrated: 2008/01/25

- Sensor-Surface: 2mm (Mechanical Surface Detection)

- Phantom: SAM 1196

- Measurement SW: DASY4, V4.7 Build 55; Postprocessing SW: SEMCAD, V1.8 Build 176

Area Scan (81x91x1): Measurement grid: dx=15mm, dy=15mm

Maximum value of SAR (interpolated) = 0.057 mW/g

Zoom Scan (7x7x7)/Cube 0: Measurement grid: dx=5mm, dy=5mm, dz=5mm

Reference Value = 4.98 V/m; Power Drift = -0.016 dB

Peak SAR (extrapolated) = 0.082 W/kg

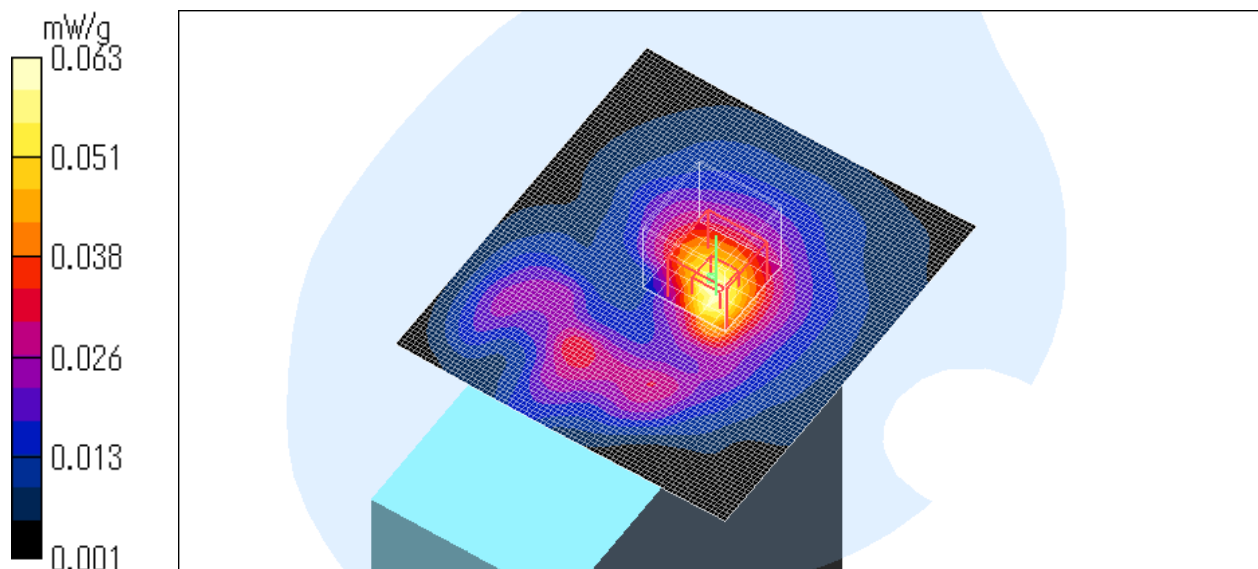
SAR(1 g) = 0.044 mW/g; SAR(10 g) = 0.024 mW/g

Maximum value of SAR (measured) = 0.063 mW/g

Test Date = 06/18/08

Ambient Temperature = 24.5degree.c

Liquid Temperature = Before 23.7 degree.C , After 23.9 degree.C



UL Japan, Inc.

Head Office EMC Lab.

4383-326 Asama-cho, Ise-shi, Mie-ken 516-0021 JAPAN

Telephone : +81 596 24 8116

Facsimile : +81 596 24 8124

CH91108 / Body / Right side / 11g 16QAM(24Mbps) / 2437MHz

Crest factor: 1

Medium: M2450 Medium parameters used: $f = 2450$ MHz; $\sigma = 1.96$ mho/m; $\epsilon_r = 50.4$; $\rho = 1000$ kg/m³

Phantom section: Flat Section

DASY4 Configuration:

- Probe: EX3DV3 - SN3507; ConvF(7.9, 7.9, 7.9); Calibrated: 2008/01/25

- Sensor-Surface: 2mm (Mechanical Surface Detection)

- Phantom: SAM 1196

- Measurement SW: DASY4, V4.7 Build 55; Postprocessing SW: SEMCAD, V1.8 Build 176

Area Scan (81x91x1): Measurement grid: dx=15mm, dy=15mm

Maximum value of SAR (interpolated) = 0.156 mW/g

Zoom Scan (7x7x7)/Cube 0: Measurement grid: dx=5mm, dy=5mm, dz=5mm

Reference Value = 6.44 V/m; Power Drift = -0.185 dB

Peak SAR (extrapolated) = 0.226 W/kg

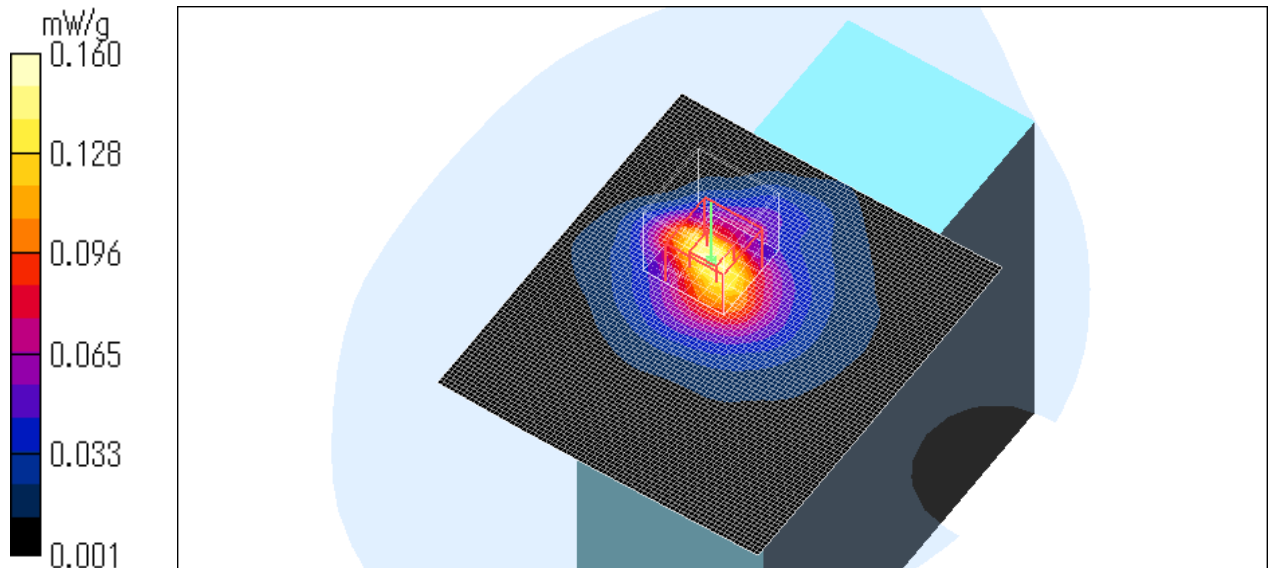
SAR(1 g) = 0.107 mW/g; SAR(10 g) = 0.054 mW/g

Maximum value of SAR (measured) = 0.160 mW/g

Test Date = 06/18/08

Ambient Temperature = 24.5degree.c

Liquid Temperature = Before 23.7 degree.C , After 23.7 degree.C



UL Japan, Inc.

Head Office EMC Lab.

4383-326 Asama-cho, Ise-shi, Mie-ken 516-0021 JAPAN

Telephone : +81 596 24 8116

Facsimile : +81 596 24 8124

CH91108 / Body / Front / 11g 16QAM(24Mbps) / 2412MHz

Crest factor: 1

Medium: M2450 Medium parameters used: $f = 2450$ MHz; $\sigma = 1.96$ mho/m; $\epsilon_r = 50.4$; $\rho = 1000$ kg/m³

Phantom section: Flat Section

DASY4 Configuration:

- Probe: EX3DV3 - SN3507; ConvF(7.9, 7.9, 7.9); Calibrated: 2008/01/25

- Sensor-Surface: 2mm (Mechanical Surface Detection)

- Phantom: SAM 1196

- Measurement SW: DASY4, V4.7 Build 55; Postprocessing SW: SEMCAD, V1.8 Build 176

Area Scan (81x91x1): Measurement grid: dx=15mm, dy=15mm

Maximum value of SAR (interpolated) = 0.293 mW/g

Zoom Scan (7x7x7)/Cube 0: Measurement grid: dx=5mm, dy=5mm, dz=5mm

Reference Value = 11.3 V/m; Power Drift = -0.202 dB

Peak SAR (extrapolated) = 0.447 W/kg

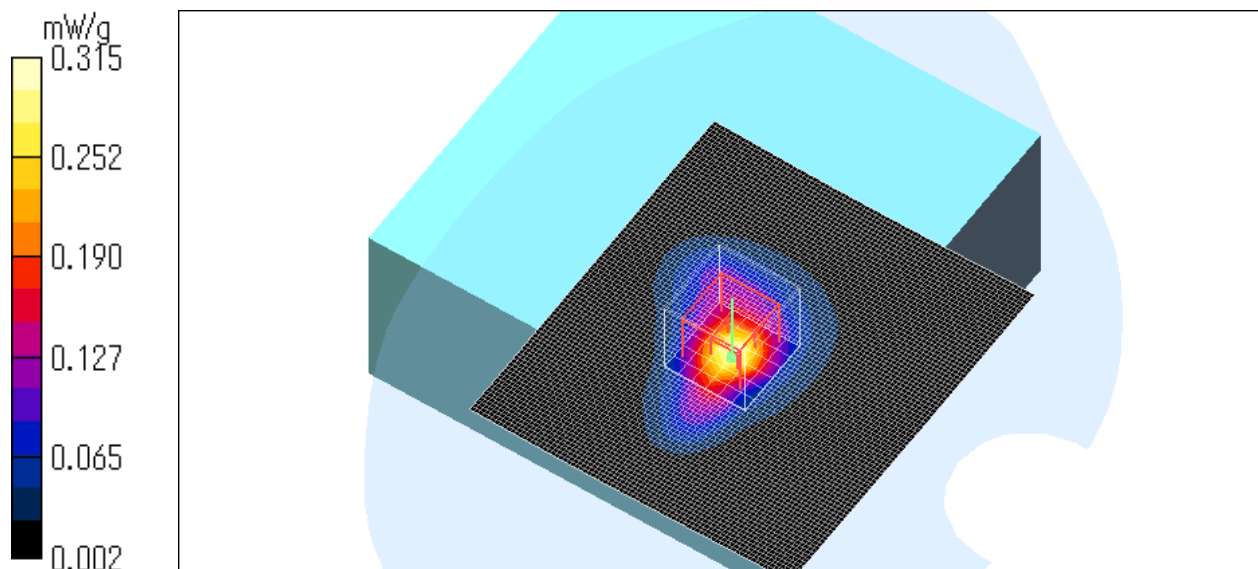
SAR(1 g) = 0.202 mW/g; SAR(10 g) = 0.096 mW/g

Maximum value of SAR (measured) = 0.315 mW/g

Test Date = 06/18/08

Ambient Temperature = 24.5degree.c

Liquid Temperature = Before 23.9degree.C , After 24.2 degree.C



UL Japan, Inc.

Head Office EMC Lab.

4383-326 Asama-cho, Ise-shi, Mie-ken 516-0021 JAPAN

Telephone : +81 596 24 8116

Facsimile : +81 596 24 8124

CH91108 / Body / Front / 11g 16QAM(24Mbps) / 2462MHz

Crest factor: 1

Medium: M2450 Medium parameters used: $f = 2450$ MHz; $\sigma = 1.96$ mho/m; $\epsilon_r = 50.4$; $\rho = 1000$ kg/m³

Phantom section: Flat Section

DASY4 Configuration:

- Probe: EX3DV3 - SN3507; ConvF(7.9, 7.9, 7.9); Calibrated: 2008/01/25

- Sensor-Surface: 2mm (Mechanical Surface Detection)

- Phantom: SAM 1196

- Measurement SW: DASY4, V4.7 Build 55; Postprocessing SW: SEMCAD, V1.8 Build 176

Area Scan (81x91x1): Measurement grid: dx=15mm, dy=15mm

Maximum value of SAR (interpolated) = 0.297 mW/g

Zoom Scan (7x7x7)/Cube 0: Measurement grid: dx=5mm, dy=5mm, dz=5mm

Reference Value = 10.0 V/m; Power Drift = -0.150 dB

Peak SAR (extrapolated) = 0.436 W/kg

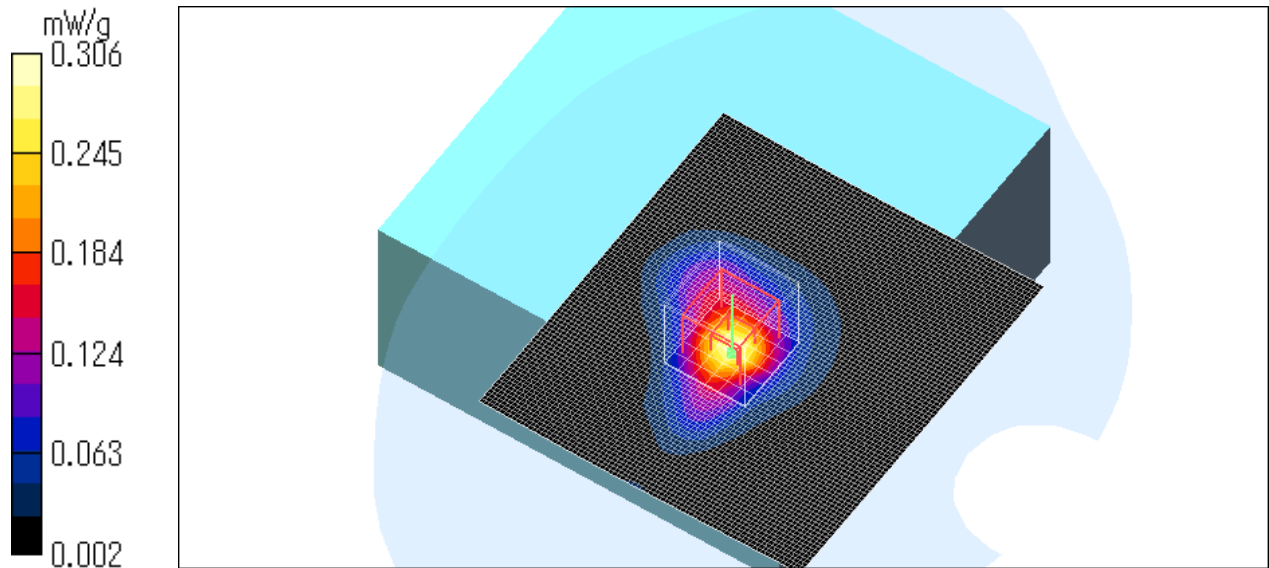
SAR(1 g) = 0.199 mW/g; SAR(10 g) = 0.097 mW/g

Maximum value of SAR (measured) = 0.306 mW/g

Test Date = 06/18/08

Ambient Temperature = 24.5degree.c

Liquid Temperature = Before 24.2 degree.C , After 24.2 degree.C



UL Japan, Inc.

Head Office EMC Lab.

4383-326 Asama-cho, Ise-shi, Mie-ken 516-0021 JAPAN

Telephone : +81 596 24 8116

Facsimile : +81 596 24 8124

CH91108 / Body / Front 5mm / 11b CCK(11Mbps) / 2412MHz

Crest factor: 1

Medium: M2450 Medium parameters used: $f = 2450$ MHz; $\sigma = 1.96$ mho/m; $\epsilon_r = 50.4$; $\rho = 1000$ kg/m³

Phantom section: Flat Section

DASY4 Configuration:

- Probe: EX3DV3 - SN3507; ConvF(7.9, 7.9, 7.9); Calibrated: 2008/01/25

- Sensor-Surface: 2mm (Mechanical Surface Detection)

- Phantom: SAM 1196

- Measurement SW: DASY4, V4.7 Build 55; Postprocessing SW: SEMCAD, V1.8 Build 176

Area Scan (81x91x1): Measurement grid: dx=15mm, dy=15mm

Maximum value of SAR (interpolated) = 0.145 mW/g

Zoom Scan (7x7x7)/Cube 0: Measurement grid: dx=5mm, dy=5mm, dz=5mm

Reference Value = 6.26 V/m; Power Drift = -0.054 dB

Peak SAR (extrapolated) = 0.199 W/kg

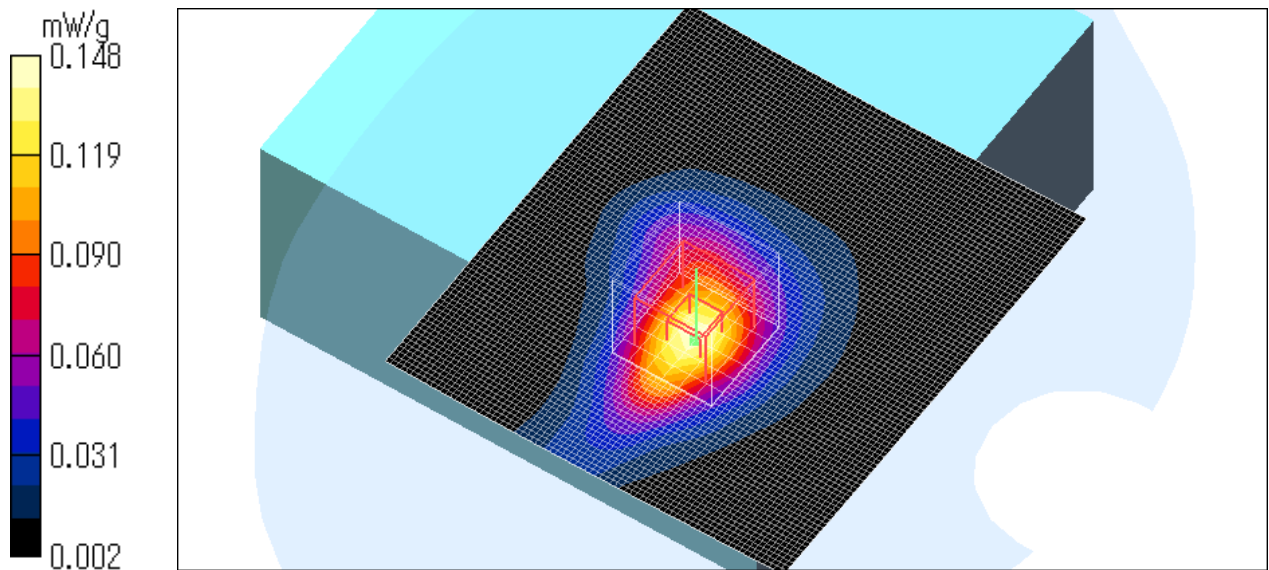
SAR(1 g) = 0.101 mW/g; SAR(10 g) = 0.054 mW/g

Maximum value of SAR (measured) = 0.148 mW/g

Test Date = 06/18/08

Ambient Temperature = 24.5degree.c

Liquid Temperature = Before 24.0 degree.C , After 24.0 degree.C



UL Japan, Inc.

Head Office EMC Lab.

4383-326 Asama-cho, Ise-shi, Mie-ken 516-0021 JAPAN

Telephone : +81 596 24 8116

Facsimile : +81 596 24 8124

CH91108 / Body / Front 10mm / 11b CCK(11Mbps) / 2412MHz

Crest factor: 1

Medium: M2450 Medium parameters used: $f = 2450$ MHz; $\sigma = 1.96$ mho/m; $\epsilon_r = 50.4$; $\rho = 1000$ kg/m³

Phantom section: Flat Section

DASY4 Configuration:

- Probe: EX3DV3 - SN3507; ConvF(7.9, 7.9, 7.9); Calibrated: 2008/01/25

- Sensor-Surface: 2mm (Mechanical Surface Detection)

- Phantom: SAM 1196

- Measurement SW: DASY4, V4.7 Build 55; Postprocessing SW: SEMCAD, V1.8 Build 176

Area Scan (81x91x1): Measurement grid: dx=15mm, dy=15mm

Maximum value of SAR (interpolated) = 0.065 mW/g

Zoom Scan (7x7x7)/Cube 0: Measurement grid: dx=5mm, dy=5mm, dz=5mm

Reference Value = 5.14 V/m; Power Drift = -0.059 dB

Peak SAR (extrapolated) = 0.086 W/kg

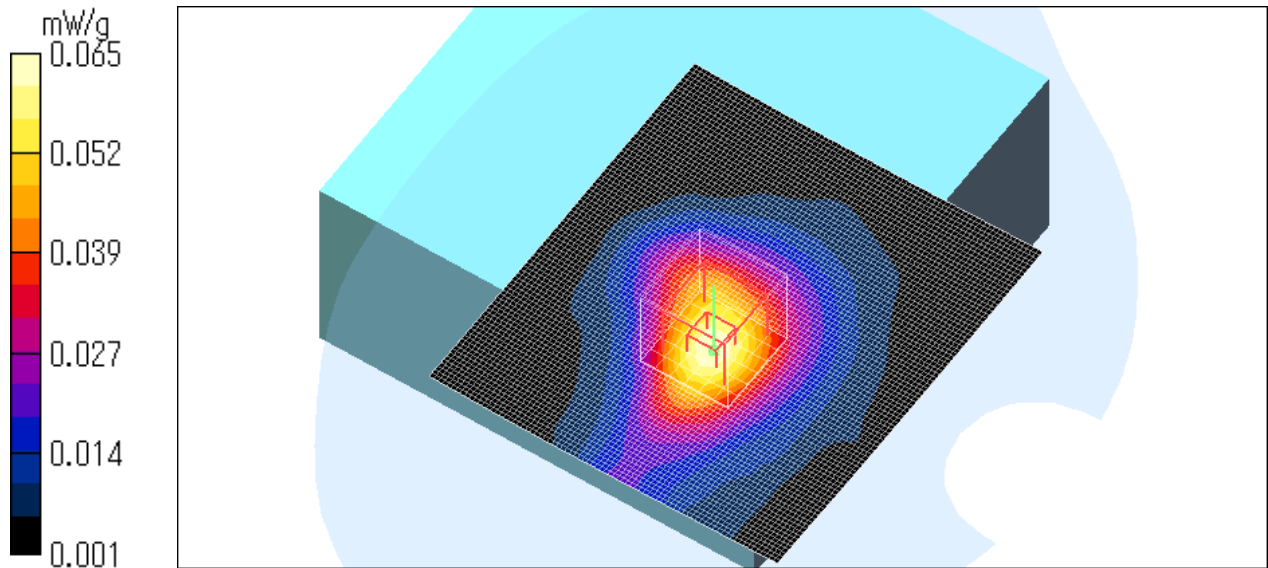
SAR(1 g) = 0.046 mW/g; SAR(10 g) = 0.026 mW/g

Maximum value of SAR (measured) = 0.065 mW/g

Test Date = 06/18/08

Ambient Temperature = 24.5degree.c

Liquid Temperature = Before 24.0 degree.C , After 24.0 degree.C



UL Japan, Inc.

Head Office EMC Lab.

4383-326 Asama-cho, Ise-shi, Mie-ken 516-0021 JAPAN

Telephone : +81 596 24 8116

Facsimile : +81 596 24 8124

CH91108 / Body / Front 15mm / 11b CCK(11Mbps) / 2412MHz

Crest factor: 1

Medium: M2450 Medium parameters used: $f = 2450$ MHz; $\sigma = 1.96$ mho/m; $\epsilon_r = 50.4$; $\rho = 1000$ kg/m³

Phantom section: Flat Section

DASY4 Configuration:

- Probe: EX3DV3 - SN3507; ConvF(7.9, 7.9, 7.9); Calibrated: 2008/01/25

- Sensor-Surface: 2mm (Mechanical Surface Detection)

- Phantom: SAM 1196

- Measurement SW: DASY4, V4.7 Build 55; Postprocessing SW: SEMCAD, V1.8 Build 176

Area Scan (81x91x1): Measurement grid: dx=15mm, dy=15mm

Maximum value of SAR (interpolated) = 0.033 mW/g

Zoom Scan (7x7x7)/Cube 0: Measurement grid: dx=5mm, dy=5mm, dz=5mm

Reference Value = 3.43 V/m; Power Drift = -0.211 dB

Peak SAR (extrapolated) = 0.044 W/kg

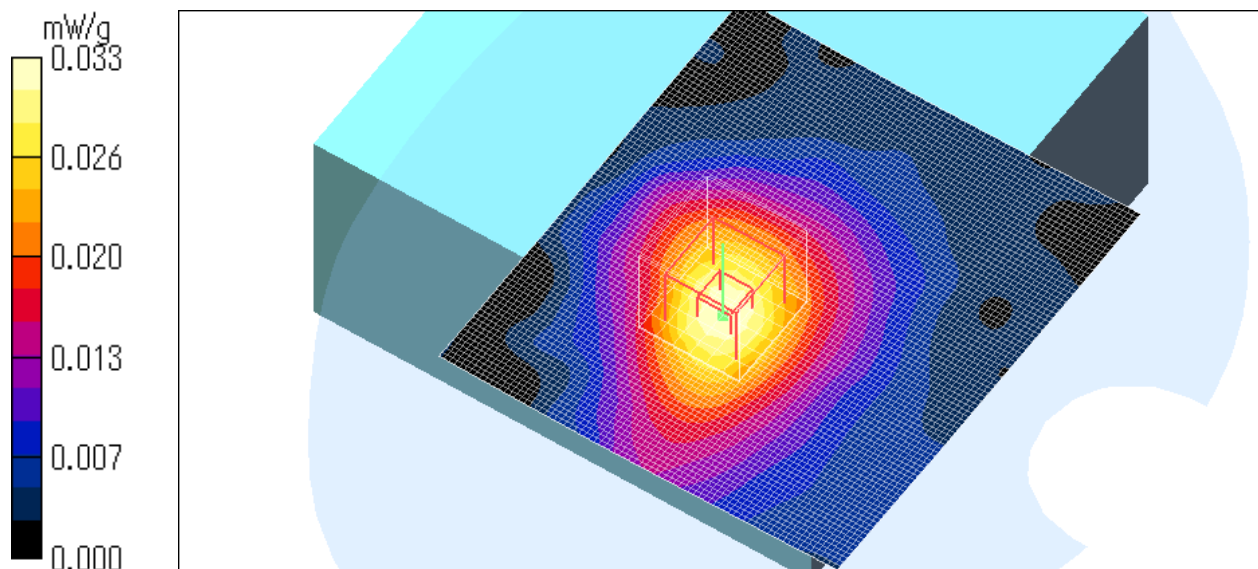
SAR(1 g) = 0.024 mW/g; SAR(10 g) = 0.014 mW/g

Maximum value of SAR (measured) = 0.033 mW/g

Test Date = 06/18/08

Ambient Temperature = 24.5degree.c

Liquid Temperature = Before 24.1 degree.C , After 24.1 degree.C



UL Japan, Inc.

Head Office EMC Lab.

4383-326 Asama-cho, Ise-shi, Mie-ken 516-0021 JAPAN

Telephone : +81 596 24 8116

Facsimile : +81 596 24 8124

3. Measurement data (Head SAR 2450MHz)
CH91108 / Head / Front / 11b CCK(11Mbps) / 2437MHz

Crest factor: 1

Medium: HSL2450 Medium parameters used: $f = 2450$ MHz; $\sigma = 1.87$ mho/m; $\epsilon_r = 37.3$; $\rho = 1000$ kg/m³

Phantom section: Flat Section

DASY4 Configuration:

- Probe: EX3DV3 - SN3507; ConvF(7.99, 7.99, 7.99); Calibrated: 2008/01/25
- Sensor-Surface: 2mm (Mechanical Surface Detection)
- Phantom: SAM 1196
- Measurement SW: DASY4, V4.7 Build 55; Postprocessing SW: SEMCAD, V1.8 Build 176

Area Scan (81x91x1): Measurement grid: dx=15mm, dy=15mm

Maximum value of SAR (interpolated) = 0.285 mW/g

Zoom Scan (7x7x7)/Cube 0: Measurement grid: dx=5mm, dy=5mm, dz=5mm

Reference Value = 5.68 V/m; Power Drift = -0.030 dB

Peak SAR (extrapolated) = 0.468 W/kg

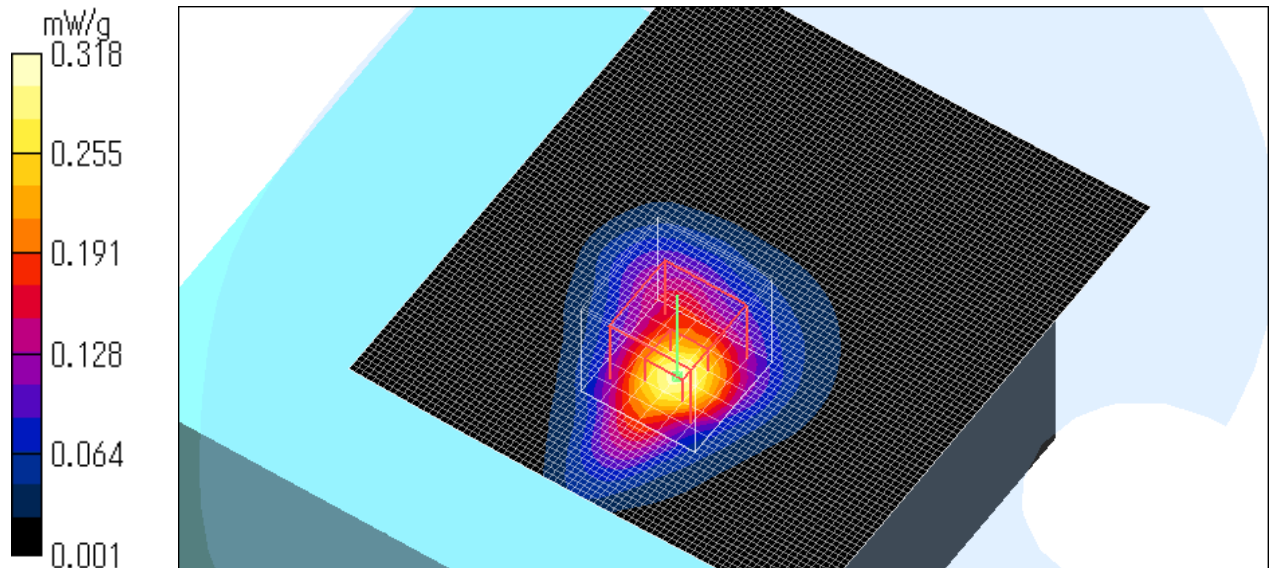
SAR(1 g) = 0.198 mW/g; SAR(10 g) = 0.093 mW/g

Maximum value of SAR (measured) = 0.318 mW/g

Test Date = 06/20/08

Ambient Temperature = 24.5 degree.c

Liquid Temperature = Before 23.6 degree.C , After 23.6 degree.C



UL Japan, Inc.

Head Office EMC Lab.

4383-326 Asama-cho, Ise-shi, Mie-ken 516-0021 JAPAN

Telephone : +81 596 24 8116

Facsimile : +81 596 24 8124

CH91108 / Head / Rear / 11b CCK(11Mbps) / 2437MHz

Crest factor: 1

Medium: HSL2450 Medium parameters used: $f = 2450$ MHz; $\sigma = 1.87$ mho/m; $\epsilon_r = 37.3$; $\rho = 1000$ kg/m³

Phantom section: Flat Section

DASY4 Configuration:

- Probe: EX3DV3 - SN3507; ConvF(7.99, 7.99, 7.99); Calibrated: 2008/01/25

- Sensor-Surface: 2mm (Mechanical Surface Detection)

- Phantom: SAM 1196

- Measurement SW: DASY4, V4.7 Build 55; Postprocessing SW: SEMCAD, V1.8 Build 176

Area Scan (81x91x1): Measurement grid: dx=15mm, dy=15mm

Maximum value of SAR (interpolated) = 0.053 mW/g

Zoom Scan (7x7x7)/Cube 0: Measurement grid: dx=5mm, dy=5mm, dz=5mm

Reference Value = 4.39 V/m; Power Drift = -0.104 dB

Peak SAR (extrapolated) = 0.074 W/kg

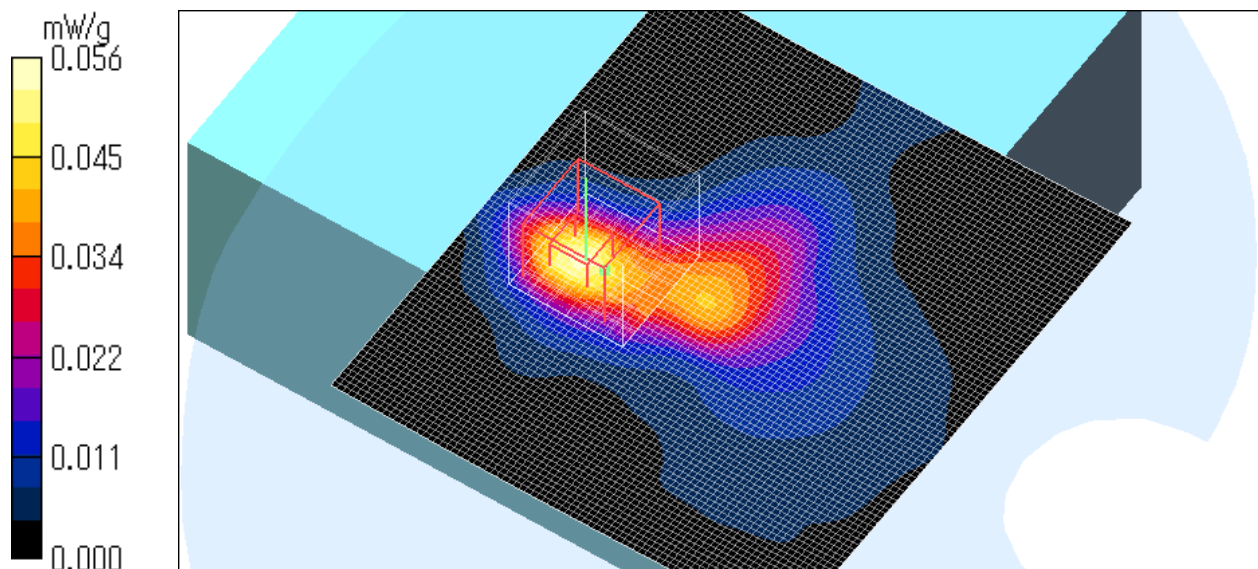
SAR(1 g) = 0.037 mW/g; SAR(10 g) = 0.018 mW/g

Maximum value of SAR (measured) = 0.056 mW/g

Test Date = 06/20/08

Ambient Temperature = 24.5 degree.c

Liquid Temperature = Before 23.6 degree.C , After 23.6 degree.C



UL Japan, Inc.

Head Office EMC Lab.

4383-326 Asama-cho, Ise-shi, Mie-ken 516-0021 JAPAN

Telephone : +81 596 24 8116

Facsimile : +81 596 24 8124

CH91108 / Head / Bottom / 11b CCK(11Mbps) / 2437MHz

Crest factor: 1

Medium: HSL2450 Medium parameters used: $f = 2450$ MHz; $\sigma = 1.87$ mho/m; $\epsilon_r = 37.3$; $\rho = 1000$ kg/m³

Phantom section: Flat Section

DASY4 Configuration:

- Probe: EX3DV3 - SN3507; ConvF(7.99, 7.99, 7.99); Calibrated: 2008/01/25

- Sensor-Surface: 2mm (Mechanical Surface Detection)

- Phantom: SAM 1196

- Measurement SW: DASY4, V4.7 Build 55; Postprocessing SW: SEMCAD, V1.8 Build 176

Area Scan (81x91x1): Measurement grid: dx=15mm, dy=15mm

Maximum value of SAR (interpolated) = 0.092 mW/g

Zoom Scan (7x7x7)/Cube 0: Measurement grid: dx=5mm, dy=5mm, dz=5mm

Reference Value = 5.72 V/m; Power Drift = -0.181 dB

Peak SAR (extrapolated) = 0.125 W/kg

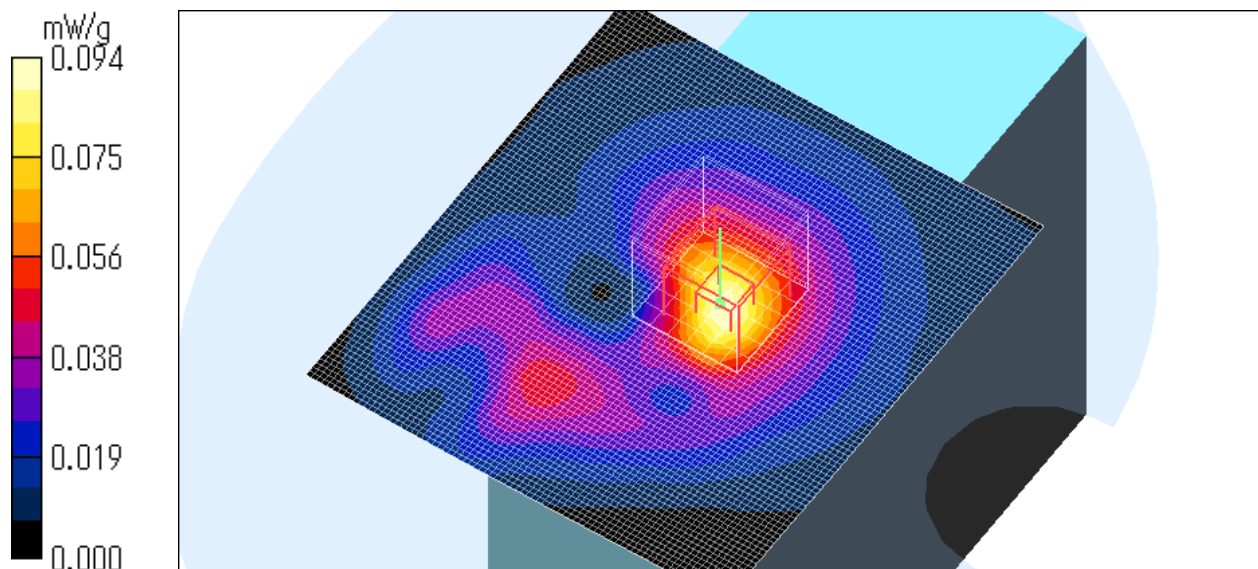
SAR(1 g) = 0.066 mW/g; SAR(10 g) = 0.034 mW/g

Maximum value of SAR (measured) = 0.094 mW/g

Test Date = 06/20/08

Ambient Temperature = 24.5 degree.c

Liquid Temperature = Before 23.7 degree.C , After 23.7 degree.C



UL Japan, Inc.

Head Office EMC Lab.

4383-326 Asama-cho, Ise-shi, Mie-ken 516-0021 JAPAN

Telephone : +81 596 24 8116

Facsimile : +81 596 24 8124

CH91108 / Head / Right side / 11b CCK(11Mbps) / 2437MHz

Crest factor: 1

Medium: HSL2450 Medium parameters used: $f = 2450$ MHz; $\sigma = 1.87$ mho/m; $\epsilon_r = 37.3$; $\rho = 1000$ kg/m³

Phantom section: Flat Section

DASY4 Configuration:

- Probe: EX3DV3 - SN3507; ConvF(7.99, 7.99, 7.99); Calibrated: 2008/01/25

- Sensor-Surface: 2mm (Mechanical Surface Detection)

- Phantom: SAM 1196

- Measurement SW: DASY4, V4.7 Build 55; Postprocessing SW: SEMCAD, V1.8 Build 176

Area Scan (81x91x1): Measurement grid: dx=15mm, dy=15mm

Maximum value of SAR (interpolated) = 0.250 mW/g

Zoom Scan (7x7x7)/Cube 0: Measurement grid: dx=5mm, dy=5mm, dz=5mm

Reference Value = 9.54 V/m; Power Drift = -0.009 dB

Peak SAR (extrapolated) = 0.338 W/kg

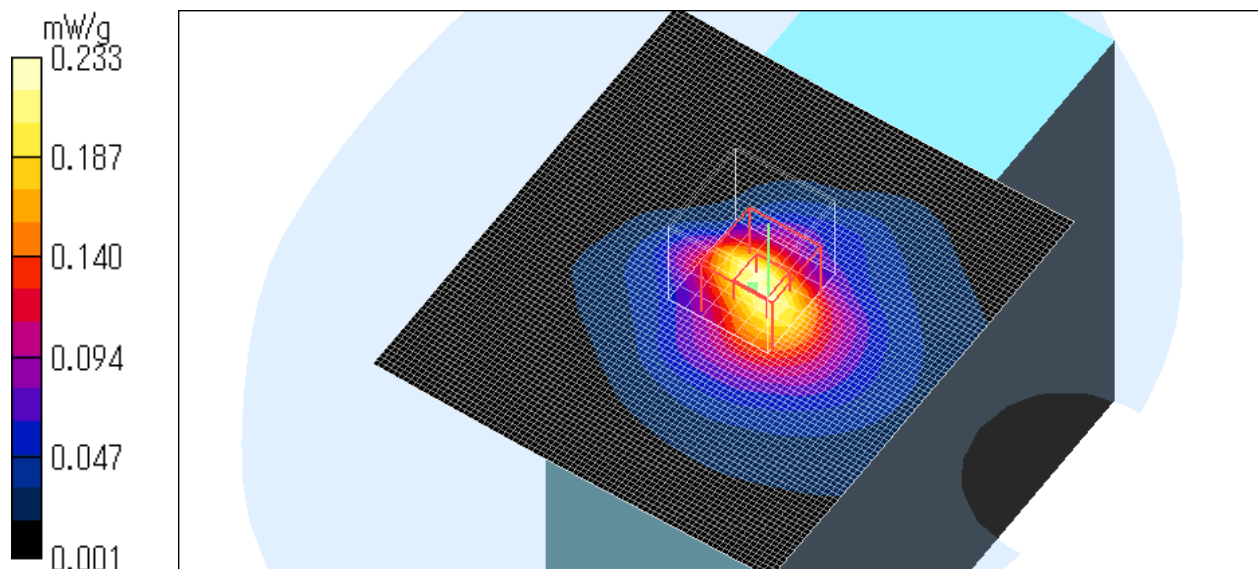
SAR(1 g) = 0.155 mW/g; SAR(10 g) = 0.078 mW/g

Maximum value of SAR (measured) = 0.233 mW/g

Test Date = 06/20/08

Ambient Temperature = 24.5 degree.c

Liquid Temperature = Before 23.7 degree.C , After 23.7 degree.C



UL Japan, Inc.

Head Office EMC Lab.

4383-326 Asama-cho, Ise-shi, Mie-ken 516-0021 JAPAN

Telephone : +81 596 24 8116

Facsimile : +81 596 24 8124

CH91108 / Head / Front / 11b CCK(11Mbps) / 2412MHz

Crest factor: 1

Medium: HSL2450 Medium parameters used: $f = 2450$ MHz; $\sigma = 1.87$ mho/m; $\epsilon_r = 37.3$; $\rho = 1000$ kg/m³

Phantom section: Flat Section

DASY4 Configuration:

- Probe: EX3DV3 - SN3507; ConvF(7.99, 7.99, 7.99); Calibrated: 2008/01/25

- Sensor-Surface: 2mm (Mechanical Surface Detection)

- Phantom: SAM 1196

- Measurement SW: DASY4, V4.7 Build 55; Postprocessing SW: SEMCAD, V1.8 Build 176

Area Scan (81x91x1): Measurement grid: dx=15mm, dy=15mm

Maximum value of SAR (interpolated) = 0.393 mW/g

Zoom Scan (7x7x7)/Cube 0: Measurement grid: dx=5mm, dy=5mm, dz=5mm

Reference Value = 7.40 V/m; Power Drift = -0.086 dB

Peak SAR (extrapolated) = 0.627 W/kg

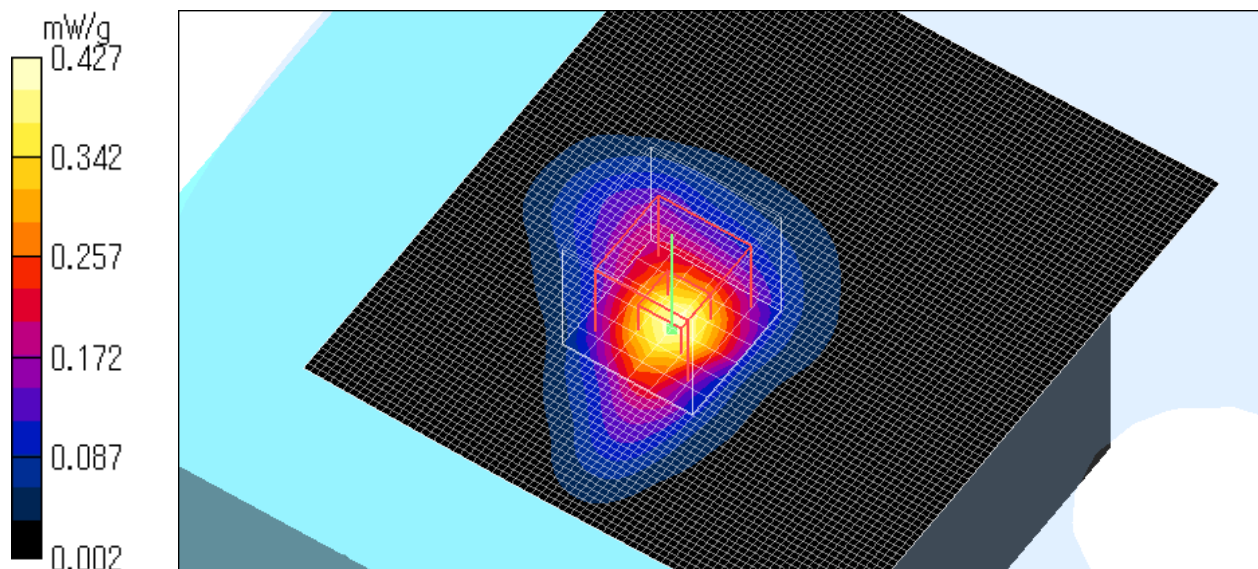
SAR(1 g) = 0.268 mW/g; SAR(10 g) = 0.125 mW/g

Maximum value of SAR (measured) = 0.427 mW/g

Test Date = 06/20/08

Ambient Temperature = 24.5 degree.c

Liquid Temperature = Before 23.8 degree.C , After 23.8 degree.C



UL Japan, Inc.

Head Office EMC Lab.

4383-326 Asama-cho, Ise-shi, Mie-ken 516-0021 JAPAN

Telephone : +81 596 24 8116

Facsimile : +81 596 24 8124

Z-axis scan at max SAR location

CH91108 / Head / Front / 11b CCK(11Mbps) / 2412MHz

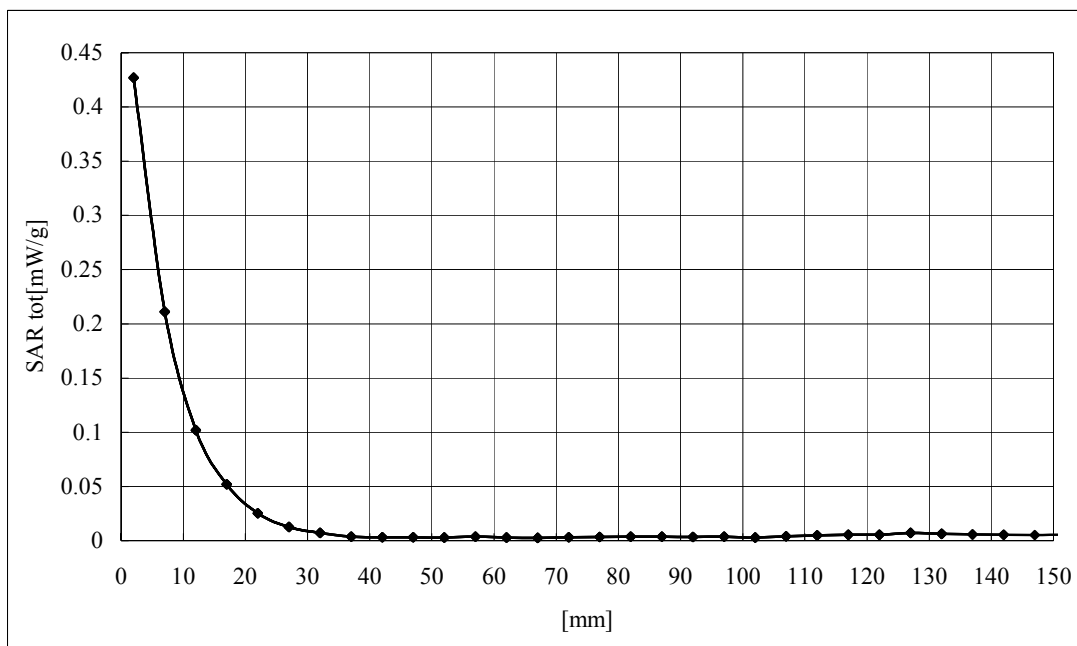
Crest factor: 1

Medium: HSL2450 Medium parameters used: $f = 2450$ MHz; $\sigma = 1.87$ mho/m; $\epsilon_r = 37.3$; $\rho = 1000$ kg/m³

Phantom section: Flat Section

DASY4 Configuration:

- Probe: EX3DV3 - SN3507; ConvF(7.99, 7.99, 7.99); Calibrated: 2008/01/25
- Sensor-Surface: 2mm (Mechanical Surface Detection)
- Phantom: SAM 1196
- Measurement SW: DASY4, V4.7 Build 55; Postprocessing SW: SEMCAD, V1.8 Build 176



UL Japan, Inc.

Head Office EMC Lab.

4383-326 Asama-cho, Ise-shi, Mie-ken 516-0021 JAPAN

Telephone : +81 596 24 8116

Facsimile : +81 596 24 8124

CH91108 / Head / Front / 11b CCK(11Mbps) / 2462MHz

Crest factor: 1

Medium: HSL2450 Medium parameters used: $f = 2450 \text{ MHz}$; $\sigma = 1.87 \text{ mho/m}$; $\epsilon_r = 37.3$; $\rho = 1000 \text{ kg/m}^3$

Phantom section: Flat Section

DASY4 Configuration:

- Probe: EX3DV3 - SN3507; ConvF(7.99, 7.99, 7.99); Calibrated: 2008/01/25

- Sensor-Surface: 2mm (Mechanical Surface Detection)

- Phantom: SAM 1196

- Measurement SW: DASY4, V4.7 Build 55; Postprocessing SW: SEMCAD, V1.8 Build 176

Area Scan (81x91x1): Measurement grid: $dx=15\text{mm}$, $dy=15\text{mm}$

Maximum value of SAR (interpolated) = 0.370 mW/g

Zoom Scan (7x7x7)/Cube 0: Measurement grid: $dx=5\text{mm}$, $dy=5\text{mm}$, $dz=5\text{mm}$

Reference Value = 6.43 V/m; Power Drift = -0.138 dB

Peak SAR (extrapolated) = 0.561 W/kg

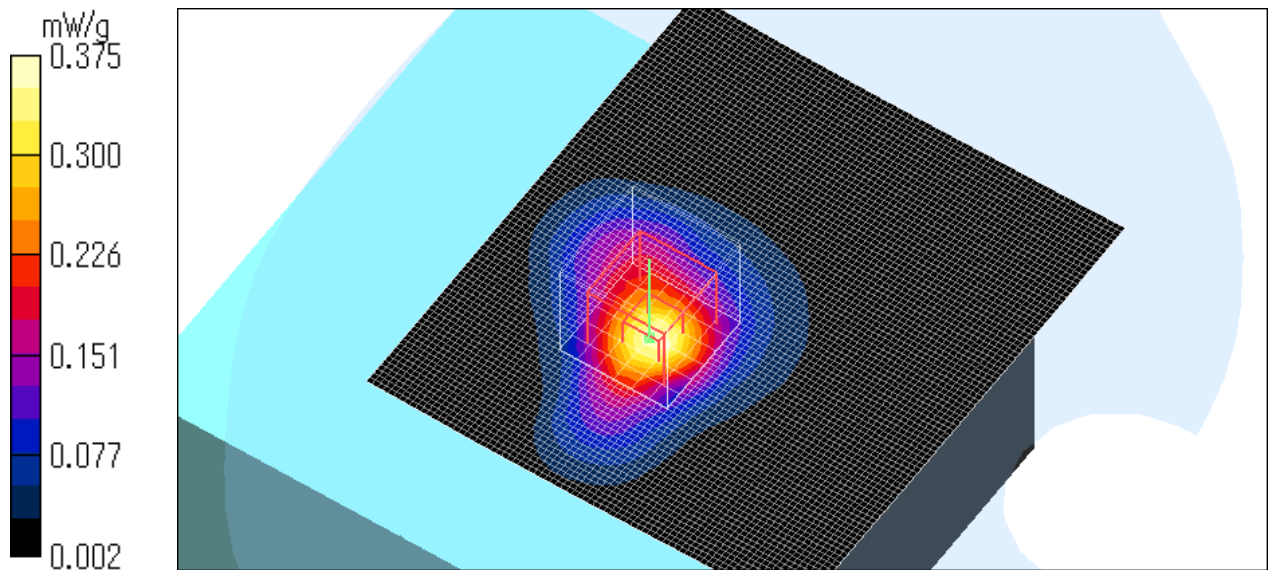
SAR(1 g) = 0.238 mW/g; SAR(10 g) = 0.113 mW/g

Maximum value of SAR (measured) = 0.375 mW/g

Test Date = 06/20/08

Ambient Temperature = 24.5 degree.c

Liquid Temperature = Before 23.8 degree.C , After 23.8 degree.C



UL Japan, Inc.

Head Office EMC Lab.

4383-326 Asama-cho, Ise-shi, Mie-ken 516-0021 JAPAN

Telephone : +81 596 24 8116

Facsimile : +81 596 24 8124

CH91108 / Head / Front / 11g BPSK(6Mbps) / 2437MHz

Crest factor: 1

Medium: HSL2450 Medium parameters used: $f = 2450 \text{ MHz}$; $\sigma = 1.87 \text{ mho/m}$; $\epsilon_r = 37.3$; $\rho = 1000 \text{ kg/m}^3$

Phantom section: Flat Section

DASY4 Configuration:

- Probe: EX3DV3 - SN3507; ConvF(7.99, 7.99, 7.99); Calibrated: 2008/01/25

- Sensor-Surface: 2mm (Mechanical Surface Detection)

- Phantom: SAM 1196

- Measurement SW: DASY4, V4.7 Build 55; Postprocessing SW: SEMCAD, V1.8 Build 176

Area Scan (81x91x1): Measurement grid: $dx=15\text{mm}$, $dy=15\text{mm}$

Maximum value of SAR (interpolated) = 0.306 mW/g

Zoom Scan (7x7x7)/Cube 0: Measurement grid: $dx=5\text{mm}$, $dy=5\text{mm}$, $dz=5\text{mm}$

Reference Value = 8.21 V/m; Power Drift = -0.185 dB

Peak SAR (extrapolated) = 0.484 W/kg

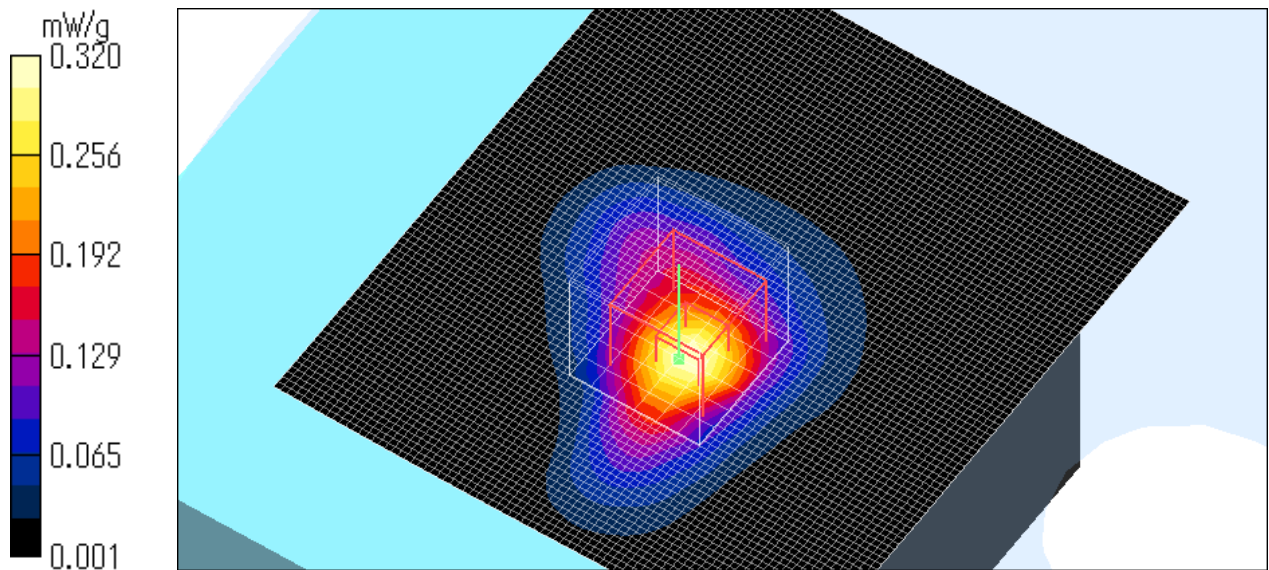
SAR(1 g) = 0.205 mW/g; SAR(10 g) = 0.097 mW/g

Maximum value of SAR (measured) = 0.320 mW/g

Test Date = 06/20/08

Ambient Temperature = 24.5 degree.c

Liquid Temperature = Before 24.0 degree.C , After 24.0 degree.C



UL Japan, Inc.

Head Office EMC Lab.

4383-326 Asama-cho, Ise-shi, Mie-ken 516-0021 JAPAN

Telephone : +81 596 24 8116

Facsimile : +81 596 24 8124

CH91108 / Head / Front / 11g QPSK(12Mbps) / 2437MHz

Crest factor: 1

Medium: HSL2450 Medium parameters used: $f = 2450$ MHz; $\sigma = 1.87$ mho/m; $\epsilon_r = 37.3$; $\rho = 1000$ kg/m³

Phantom section: Flat Section

DASY4 Configuration:

- Probe: EX3DV3 - SN3507; ConvF(7.99, 7.99, 7.99); Calibrated: 2008/01/25

- Sensor-Surface: 2mm (Mechanical Surface Detection)

- Phantom: SAM 1196

- Measurement SW: DASY4, V4.7 Build 55; Postprocessing SW: SEMCAD, V1.8 Build 176

Area Scan (81x91x1): Measurement grid: dx=15mm, dy=15mm

Maximum value of SAR (interpolated) = 0.257 mW/g

Zoom Scan (7x7x7)/Cube 0: Measurement grid: dx=5mm, dy=5mm, dz=5mm

Reference Value = 8.71 V/m; Power Drift = -0.138 dB

Peak SAR (extrapolated) = 0.407 W/kg

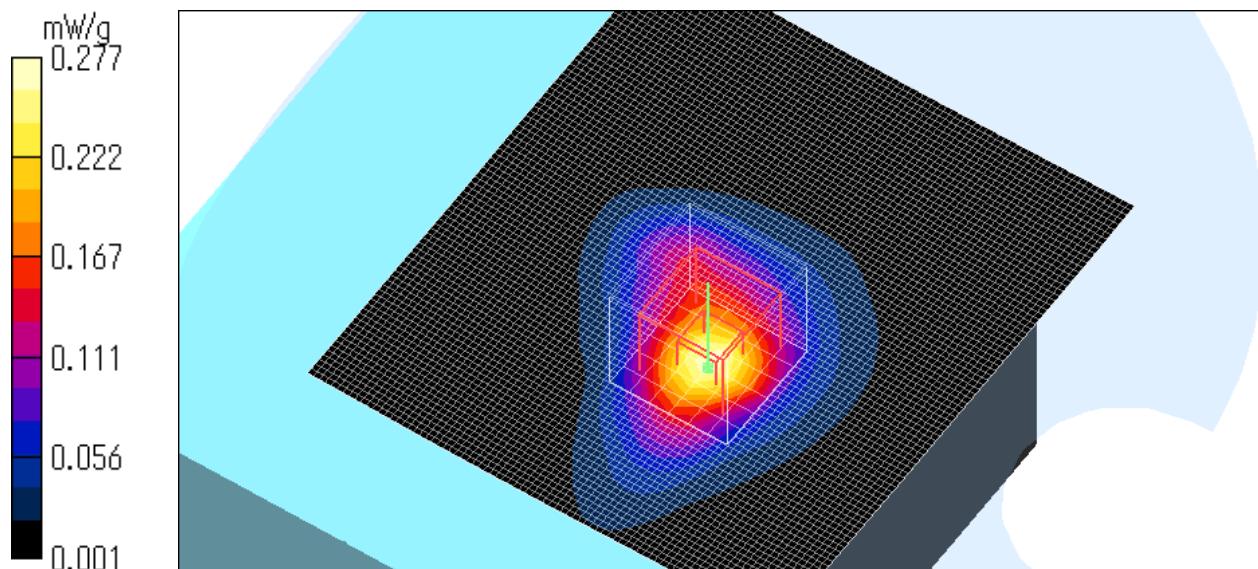
SAR(1 g) = 0.176 mW/g; SAR(10 g) = 0.085 mW/g

Maximum value of SAR (measured) = 0.277 mW/g

Test Date = 06/20/08

Ambient Temperature = 24.5 degree.c

Liquid Temperature = Before 24.0 degree.C , After 24.0 degree.C



UL Japan, Inc.

Head Office EMC Lab.

4383-326 Asama-cho, Ise-shi, Mie-ken 516-0021 JAPAN

Telephone : +81 596 24 8116

Facsimile : +81 596 24 8124

CH91108 / Head / Front / 11g 16QAM(24Mbps) / 2437MHz

Crest factor: 1

Medium: HSL2450 Medium parameters used: $f = 2450$ MHz; $\sigma = 1.87$ mho/m; $\epsilon_r = 37.3$; $\rho = 1000$ kg/m³

Phantom section: Flat Section

DASY4 Configuration:

- Probe: EX3DV3 - SN3507; ConvF(7.99, 7.99, 7.99); Calibrated: 2008/01/25

- Sensor-Surface: 2mm (Mechanical Surface Detection)

- Phantom: SAM 1196

- Measurement SW: DASY4, V4.7 Build 55; Postprocessing SW: SEMCAD, V1.8 Build 176

Area Scan (81x91x1): Measurement grid: dx=15mm, dy=15mm

Maximum value of SAR (interpolated) = 0.291 mW/g

Zoom Scan (7x7x7)/Cube 0: Measurement grid: dx=5mm, dy=5mm, dz=5mm

Reference Value = 9.07 V/m; Power Drift = -0.111 dB

Peak SAR (extrapolated) = 0.471 W/kg

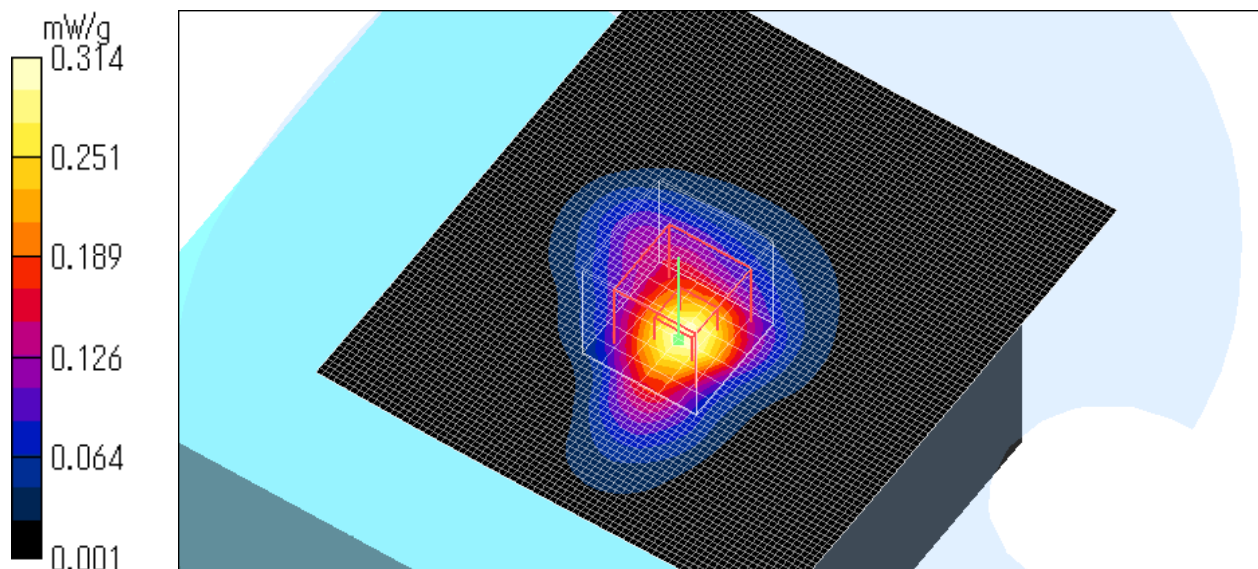
SAR(1 g) = 0.200 mW/g; SAR(10 g) = 0.094 mW/g

Maximum value of SAR (measured) = 0.314 mW/g

Test Date = 06/20/08

Ambient Temperature = 24.5 degree.c

Liquid Temperature = Before 23.9 degree.C , After 23.9 degree.C



UL Japan, Inc.

Head Office EMC Lab.

4383-326 Asama-cho, Ise-shi, Mie-ken 516-0021 JAPAN

Telephone : +81 596 24 8116

Facsimile : +81 596 24 8124

CH91108 / Head / Front / 11g 64QAM(54Mbps) / 2437MHz

Crest factor: 1

Medium: HSL2450 Medium parameters used: $f = 2450$ MHz; $\sigma = 1.87$ mho/m; $\epsilon_r = 37.3$; $\rho = 1000$ kg/m³

Phantom section: Flat Section

DASY4 Configuration:

- Probe: EX3DV3 - SN3507; ConvF(7.99, 7.99, 7.99); Calibrated: 2008/01/25

- Sensor-Surface: 2mm (Mechanical Surface Detection)

- Phantom: SAM 1196

- Measurement SW: DASY4, V4.7 Build 55; Postprocessing SW: SEMCAD, V1.8 Build 176

Area Scan (81x91x1): Measurement grid: dx=15mm, dy=15mm

Maximum value of SAR (interpolated) = 0.318 mW/g

Zoom Scan (7x7x7)/Cube 0: Measurement grid: dx=5mm, dy=5mm, dz=5mm

Reference Value = 10.7 V/m; Power Drift = -0.016 dB

Peak SAR (extrapolated) = 0.473 W/kg

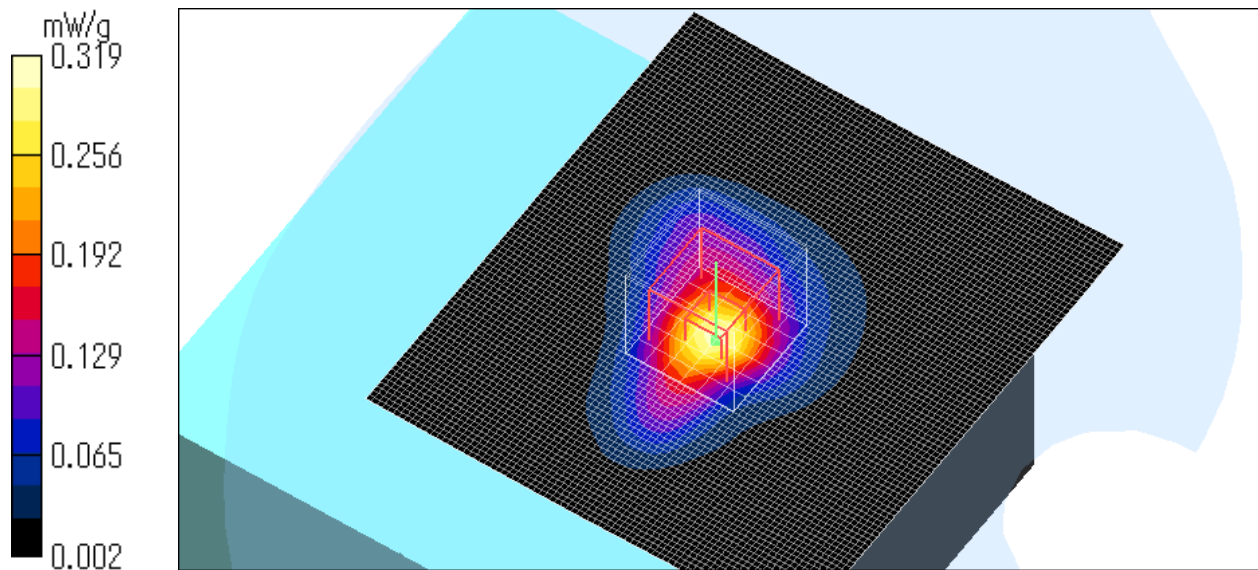
SAR(1 g) = 0.200 mW/g; SAR(10 g) = 0.094 mW/g

Maximum value of SAR (measured) = 0.319 mW/g

Test Date = 06/20/08

Ambient Temperature = 24.5 degree.c

Liquid Temperature = Before 23.9 degree.C , After 23.9 degree.C



UL Japan, Inc.

Head Office EMC Lab.

4383-326 Asama-cho, Ise-shi, Mie-ken 516-0021 JAPAN

Telephone : +81 596 24 8116

Facsimile : +81 596 24 8124

CH91108 / Head / Rear / 11g BPSK(6Mbps) / 2437MHz

Crest factor: 1

Medium: HSL2450 Medium parameters used: $f = 2450$ MHz; $\sigma = 1.87$ mho/m; $\epsilon_r = 37.3$; $\rho = 1000$ kg/m³

Phantom section: Flat Section

DASY4 Configuration:

- Probe: EX3DV3 - SN3507; ConvF(7.99, 7.99, 7.99); Calibrated: 2008/01/25

- Sensor-Surface: 2mm (Mechanical Surface Detection)

- Phantom: SAM 1196

- Measurement SW: DASY4, V4.7 Build 55; Postprocessing SW: SEMCAD, V1.8 Build 176

Area Scan (81x91x1): Measurement grid: dx=15mm, dy=15mm

Maximum value of SAR (interpolated) = 0.055 mW/g

Zoom Scan (7x7x7)/Cube 0: Measurement grid: dx=5mm, dy=5mm, dz=5mm

Reference Value = 3.69 V/m; Power Drift = -0.041 dB

Peak SAR (extrapolated) = 0.079 W/kg

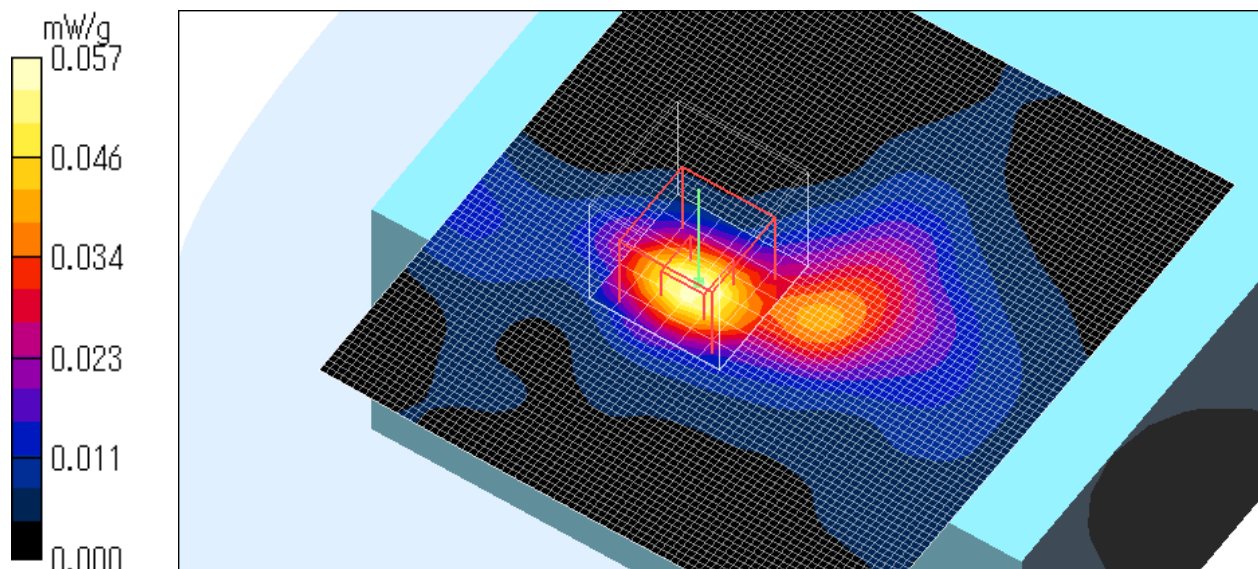
SAR(1 g) = 0.038 mW/g; SAR(10 g) = 0.017 mW/g

Maximum value of SAR (measured) = 0.057 mW/g

Test Date = 06/20/08

Ambient Temperature = 24.5 degree.c

Liquid Temperature = Before 23.8 degree.C , After 23.8 degree.C



UL Japan, Inc.

Head Office EMC Lab.

4383-326 Asama-cho, Ise-shi, Mie-ken 516-0021 JAPAN

Telephone : +81 596 24 8116

Facsimile : +81 596 24 8124

CH91108 / Head / Bottom / 11g BPSK(6Mbps) / 2437MHz

Crest factor: 1

Medium: HSL2450 Medium parameters used: $f = 2450$ MHz; $\sigma = 1.87$ mho/m; $\epsilon_r = 37.3$; $\rho = 1000$ kg/m³

Phantom section: Flat Section

DASY4 Configuration:

- Probe: EX3DV3 - SN3507; ConvF(7.99, 7.99, 7.99); Calibrated: 2008/01/25

- Sensor-Surface: 2mm (Mechanical Surface Detection)

- Phantom: SAM 1196

- Measurement SW: DASY4, V4.7 Build 55; Postprocessing SW: SEMCAD, V1.8 Build 176

Area Scan (81x91x1): Measurement grid: dx=15mm, dy=15mm

Maximum value of SAR (interpolated) = 0.081 mW/g

Zoom Scan (7x7x7)/Cube 0: Measurement grid: dx=5mm, dy=5mm, dz=5mm

Reference Value = 2.41 V/m; Power Drift = 0.151 dB

Peak SAR (extrapolated) = 0.109 W/kg

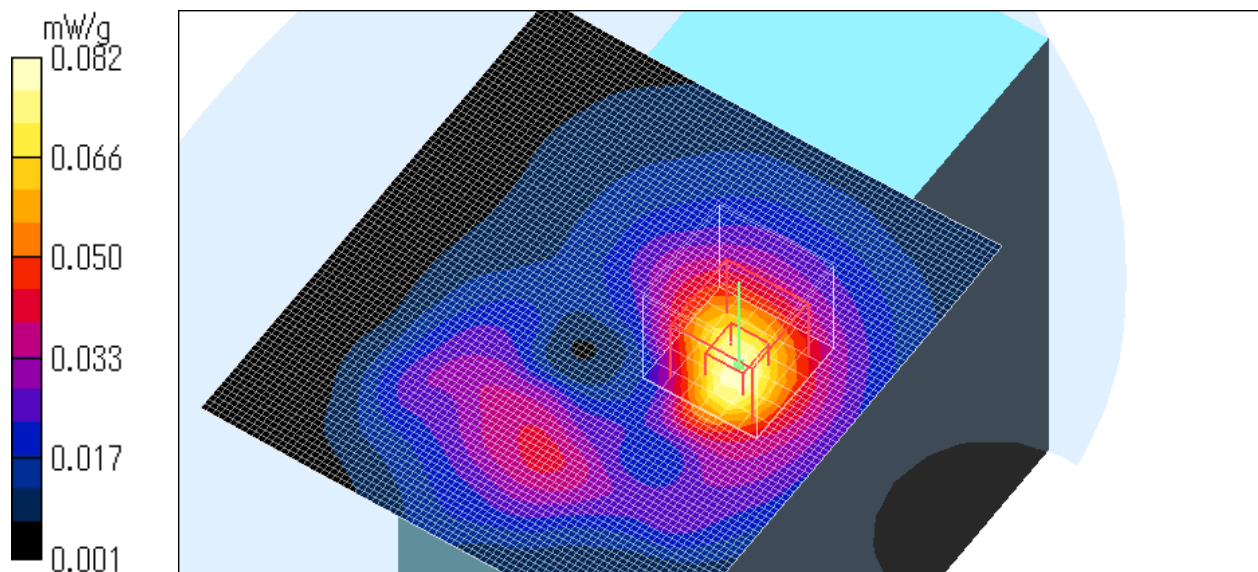
SAR(1 g) = 0.057 mW/g; SAR(10 g) = 0.030 mW/g

Maximum value of SAR (measured) = 0.082 mW/g

Test Date = 06/20/08

Ambient Temperature = 24.5 degree.c

Liquid Temperature = Before 23.8 degree.C , After 23.8 degree.C



UL Japan, Inc.

Head Office EMC Lab.

4383-326 Asama-cho, Ise-shi, Mie-ken 516-0021 JAPAN

Telephone : +81 596 24 8116

Facsimile : +81 596 24 8124

CH91108 / Head / Right side / 11g BPSK(6Mbps) / 2437MHz

Crest factor: 1

Medium: HSL2450 Medium parameters used: $f = 2450$ MHz; $\sigma = 1.87$ mho/m; $\epsilon_r = 37.3$; $\rho = 1000$ kg/m³

Phantom section: Flat Section

DASY4 Configuration:

- Probe: EX3DV3 - SN3507; ConvF(7.99, 7.99, 7.99); Calibrated: 2008/01/25

- Sensor-Surface: 2mm (Mechanical Surface Detection)

- Phantom: SAM 1196

- Measurement SW: DASY4, V4.7 Build 55; Postprocessing SW: SEMCAD, V1.8 Build 176

Area Scan (81x91x1): Measurement grid: dx=15mm, dy=15mm

Maximum value of SAR (interpolated) = 0.169 mW/g

Zoom Scan (7x7x7)/Cube 0: Measurement grid: dx=5mm, dy=5mm, dz=5mm

Reference Value = 4.37 V/m; Power Drift = -0.117 dB

Peak SAR (extrapolated) = 0.254 W/kg

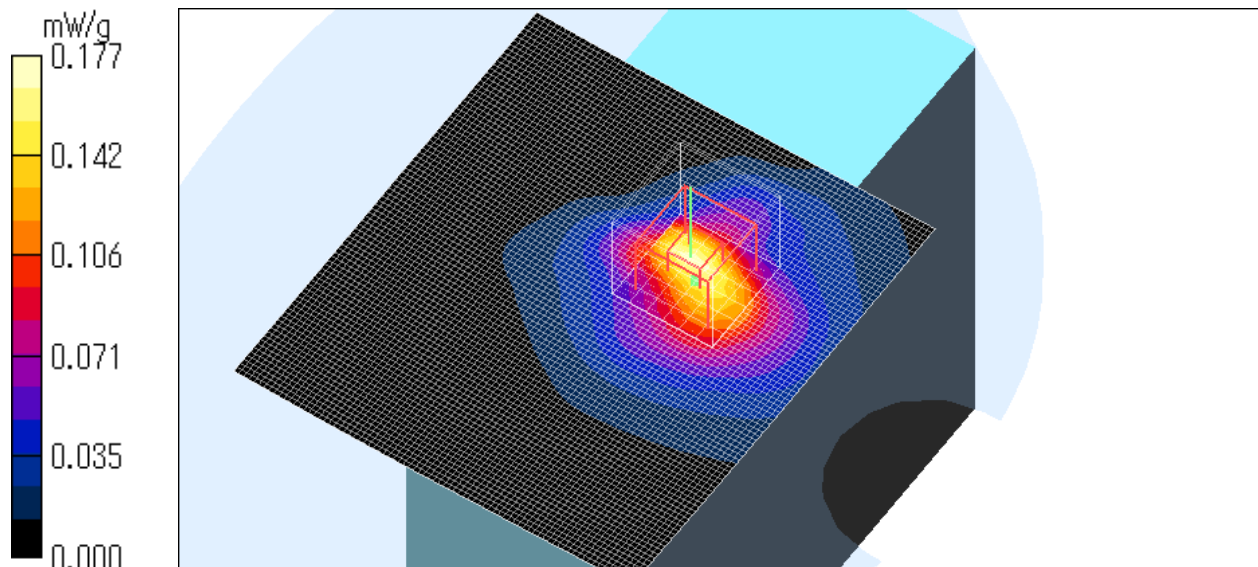
SAR(1 g) = 0.113 mW/g; SAR(10 g) = 0.056 mW/g

Maximum value of SAR (measured) = 0.177 mW/g

Test Date = 06/20/08

Ambient Temperature = 24.5 degree.c

Liquid Temperature = Before 23.8 degree.C , After 23.8 degree.C



UL Japan, Inc.

Head Office EMC Lab.

4383-326 Asama-cho, Ise-shi, Mie-ken 516-0021 JAPAN

Telephone : +81 596 24 8116

Facsimile : +81 596 24 8124

CH91108 / Head / Front / 11g BPSK (6Mbps) / 2412MHz

Crest factor: 1

Medium: HSL2450 Medium parameters used: $f = 2450 \text{ MHz}$; $\sigma = 1.87 \text{ mho/m}$; $\epsilon_r = 37.3$; $\rho = 1000 \text{ kg/m}^3$

Phantom section: Flat Section

DASY4 Configuration:

- Probe: EX3DV3 - SN3507; ConvF(7.99, 7.99, 7.99); Calibrated: 2008/01/25

- Sensor-Surface: 2mm (Mechanical Surface Detection)

- Phantom: SAM 1196

- Measurement SW: DASY4, V4.7 Build 55; Postprocessing SW: SEMCAD, V1.8 Build 176

Area Scan (81x91x1): Measurement grid: $dx=15\text{mm}$, $dy=15\text{mm}$

Maximum value of SAR (interpolated) = 0.335 mW/g

Zoom Scan (7x7x7)/Cube 0: Measurement grid: $dx=5\text{mm}$, $dy=5\text{mm}$, $dz=5\text{mm}$

Reference Value = 7.73 V/m; Power Drift = -0.061 dB

Peak SAR (extrapolated) = 0.527 W/kg

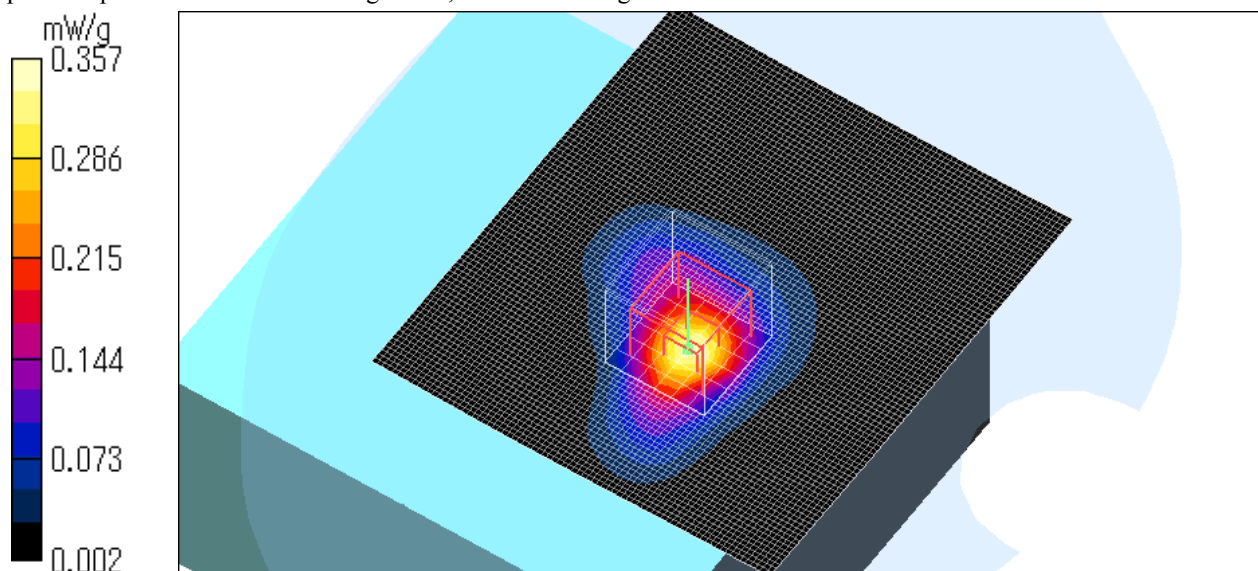
SAR(1 g) = 0.223 mW/g; SAR(10 g) = 0.104 mW/g

Maximum value of SAR (measured) = 0.357 mW/g

Test Date = 06/20/08

Ambient Temperature = 24.5 degree.c

Liquid Temperature = Before 23.7 degree.C , After 23.7 degree.C



UL Japan, Inc.

Head Office EMC Lab.

4383-326 Asama-cho, Ise-shi, Mie-ken 516-0021 JAPAN

Telephone : +81 596 24 8116

Facsimile : +81 596 24 8124

CH91108 / Head / Front / 11g BPSK (6Mbps) / 2462MHz

Crest factor: 1

Medium: HSL2450 Medium parameters used: $f = 2450$ MHz; $\sigma = 1.87$ mho/m; $\epsilon_r = 37.3$; $\rho = 1000$ kg/m³

Phantom section: Flat Section

DASY4 Configuration:

- Probe: EX3DV3 - SN3507; ConvF(7.99, 7.99, 7.99); Calibrated: 2008/01/25

- Sensor-Surface: 2mm (Mechanical Surface Detection)

- Phantom: SAM 1196

- Measurement SW: DASY4, V4.7 Build 55; Postprocessing SW: SEMCAD, V1.8 Build 176

Area Scan (81x91x1): Measurement grid: dx=15mm, dy=15mm

Maximum value of SAR (interpolated) = 0.292 mW/g

Zoom Scan (7x7x7)/Cube 0: Measurement grid: dx=5mm, dy=5mm, dz=5mm

Reference Value = 9.10 V/m; Power Drift = -0.141 dB

Peak SAR (extrapolated) = 0.469 W/kg

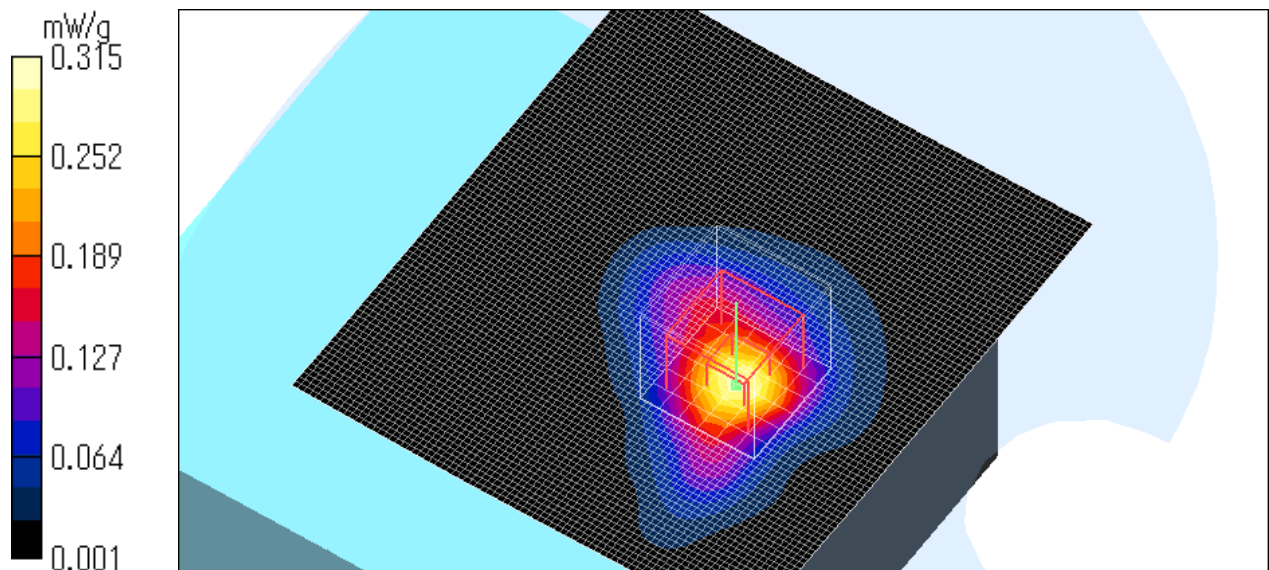
SAR(1 g) = 0.196 mW/g; SAR(10 g) = 0.093 mW/g

Maximum value of SAR (measured) = 0.315 mW/g

Test Date = 06/20/08

Ambient Temperature = 24.5 degree.c

Liquid Temperature = Before 23.7 degree.C , After 23.7 degree.C



UL Japan, Inc.

Head Office EMC Lab.

4383-326 Asama-cho, Ise-shi, Mie-ken 516-0021 JAPAN

Telephone : +81 596 24 8116

Facsimile : +81 596 24 8124

CH91108 / Head / Front 5mm / 11b CCK (11Mbps) / 2412MHz

Crest factor: 1

Medium: HSL2450 Medium parameters used: $f = 2450$ MHz; $\sigma = 1.87$ mho/m; $\epsilon_r = 37.3$; $\rho = 1000$ kg/m³

Phantom section: Flat Section

DASY4 Configuration:

- Probe: EX3DV3 - SN3507; ConvF(7.99, 7.99, 7.99); Calibrated: 2008/01/25

- Sensor-Surface: 2mm (Mechanical Surface Detection)

- Phantom: SAM 1196

- Measurement SW: DASY4, V4.7 Build 55; Postprocessing SW: SEMCAD, V1.8 Build 176

Area Scan (81x91x1): Measurement grid: dx=15mm, dy=15mm

Maximum value of SAR (interpolated) = 0.199 mW/g

Zoom Scan (7x7x7)/Cube 0: Measurement grid: dx=5mm, dy=5mm, dz=5mm

Reference Value = 8.02 V/m; Power Drift = -0.054 dB

Peak SAR (extrapolated) = 0.283 W/kg

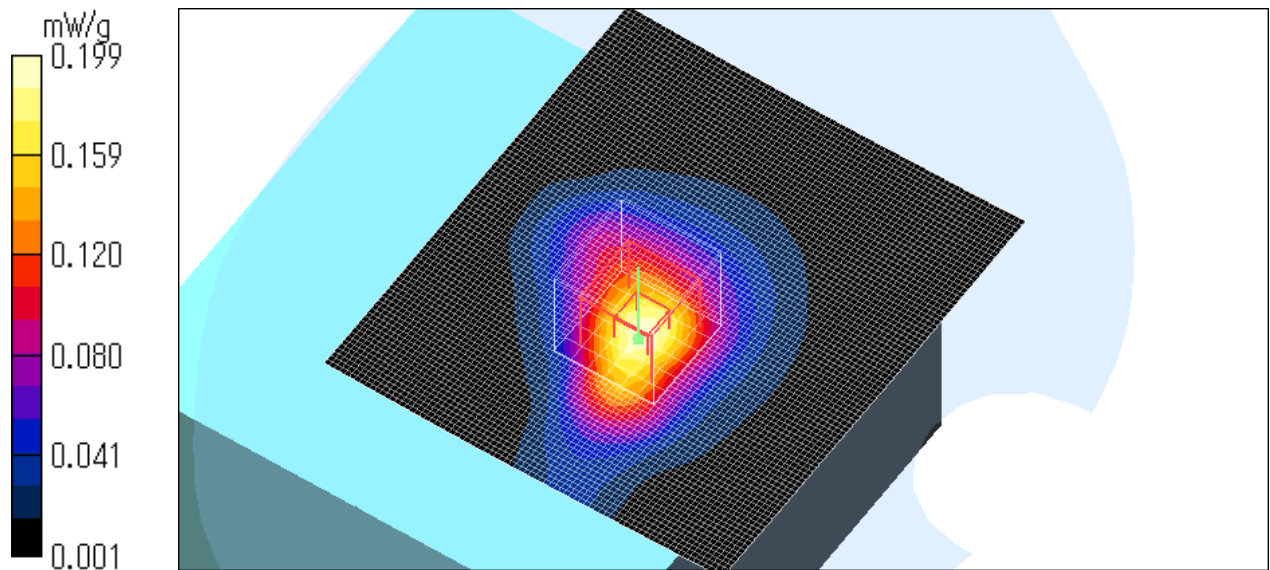
SAR(1 g) = 0.133 mW/g; SAR(10 g) = 0.069 mW/g

Maximum value of SAR (measured) = 0.199 mW/g

Test Date = 06/20/08

Ambient Temperature = 24.5 degree.c

Liquid Temperature = Before 23.8 degree.C , After 23.8 degree.C



UL Japan, Inc.

Head Office EMC Lab.

4383-326 Asama-cho, Ise-shi, Mie-ken 516-0021 JAPAN

Telephone : +81 596 24 8116

Facsimile : +81 596 24 8124

CH91108 / Head / Front 10mm / 11b CCK (11Mbps) / 2412MHz

Crest factor: 1

Medium: HSL2450 Medium parameters used: $f = 2450$ MHz; $\sigma = 1.87$ mho/m; $\epsilon_r = 37.3$; $\rho = 1000$ kg/m³

Phantom section: Flat Section

DASY4 Configuration:

- Probe: EX3DV3 - SN3507; ConvF(7.99, 7.99, 7.99); Calibrated: 2008/01/25

- Sensor-Surface: 2mm (Mechanical Surface Detection)

- Phantom: SAM 1196

- Measurement SW: DASY4, V4.7 Build 55; Postprocessing SW: SEMCAD, V1.8 Build 176

Area Scan (81x91x1): Measurement grid: dx=15mm, dy=15mm

Maximum value of SAR (interpolated) = 0.090 mW/g

Zoom Scan (7x7x7)/Cube 0: Measurement grid: dx=5mm, dy=5mm, dz=5mm

Reference Value = 5.45 V/m; Power Drift = -0.168 dB

Peak SAR (extrapolated) = 0.117 W/kg

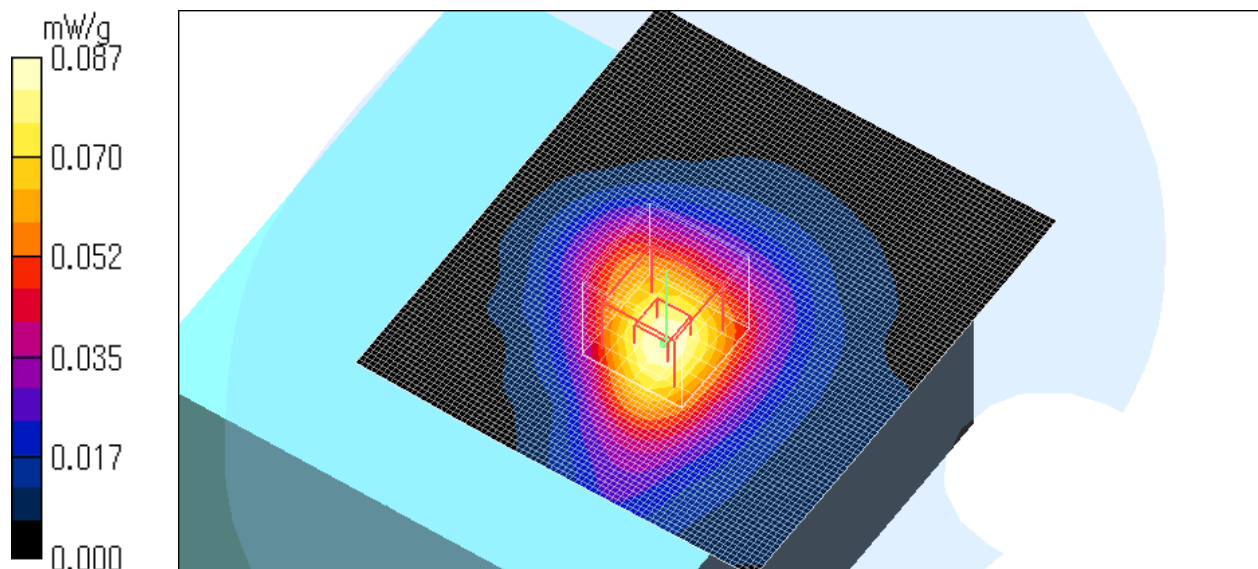
SAR(1 g) = 0.061 mW/g; SAR(10 g) = 0.033 mW/g

Maximum value of SAR (measured) = 0.087 mW/g

Test Date = 06/20/08

Ambient Temperature = 24.5 degree.c

Liquid Temperature = Before 23.9 degree.C , After 23.9 degree.C



UL Japan, Inc.

Head Office EMC Lab.

4383-326 Asama-cho, Ise-shi, Mie-ken 516-0021 JAPAN

Telephone : +81 596 24 8116

Facsimile : +81 596 24 8124

CH91108 / Head / Front 15mm / 11b CCK (11Mbps) / 2412MHz

Crest factor: 1

Medium: HSL2450 Medium parameters used: $f = 2450$ MHz; $\sigma = 1.87$ mho/m; $\epsilon_r = 37.3$; $\rho = 1000$ kg/m³

Phantom section: Flat Section

DASY4 Configuration:

- Probe: EX3DV3 - SN3507; ConvF(7.99, 7.99, 7.99); Calibrated: 2008/01/25

- Sensor-Surface: 2mm (Mechanical Surface Detection)

- Phantom: SAM 1196

- Measurement SW: DASY4, V4.7 Build 55; Postprocessing SW: SEMCAD, V1.8 Build 176

Area Scan (81x91x1): Measurement grid: dx=15mm, dy=15mm

Maximum value of SAR (interpolated) = 0.053 mW/g

Zoom Scan (7x7x7)/Cube 0: Measurement grid: dx=5mm, dy=5mm, dz=5mm

Reference Value = 4.52 V/m; Power Drift = -0.074 dB

Peak SAR (extrapolated) = 0.070 W/kg

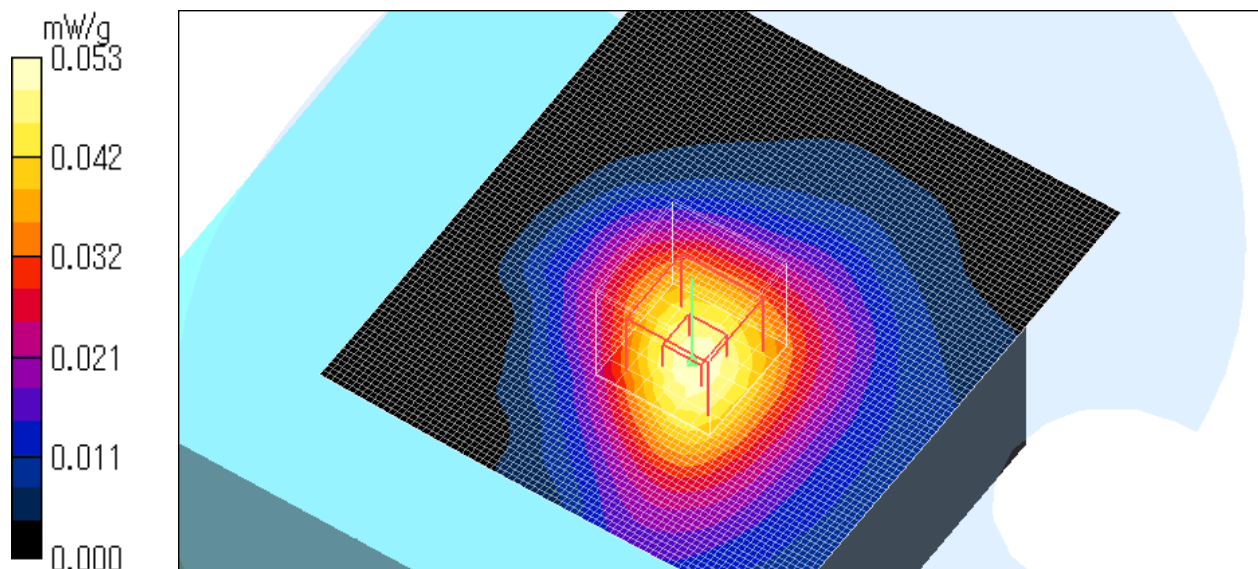
SAR(1 g) = 0.037 mW/g; SAR(10 g) = 0.021 mW/g

Maximum value of SAR (measured) = 0.053 mW/g

Test Date = 06/20/08

Ambient Temperature = 24.5 degree.c

Liquid Temperature = Before 23.9 degree.C , After 23.9 degree.C



UL Japan, Inc.

Head Office EMC Lab.

4383-326 Asama-cho, Ise-shi, Mie-ken 516-0021 JAPAN

Telephone : +81 596 24 8116

Facsimile : +81 596 24 8124

APPENDIX 3 : Test instruments

1. Equipment used

Control No.	Name of Equipment	Manufacture	Model number	Serial number	Calibration	
					Last Cal	due date
MPM-01	Power Meter	Agilent	E4417A	3008A01671	2008/02/06	2009/02/28
MPSE-01	Power Sensor	Agilent	E9300B	US40010300	2008/02/04	2009/02/28
MPSE-03	Power sensor	Agilent	E9327A	US40440576	2008/02/09	2009/02/28
MAT-15	Attenuator(30dB)	Agilent	8498A	100023	2008/02/21	2009/02/28
MPM-08	Power Meter	Anritsu	ML2495A	6K00003338	2007/09/12	2008/09/30
MPSE-11	Power sensor	Anritsu	MA2411B	011737	2007/09/12	2008/09/30
MAT-24	Attenuator(10dB)(above1GHz)	Agilent	8493C	71389	2007/06/28	2008/06/30
MSG-01	Signal Genelator	Agilent	SMR40	100023	2008/01/08	2009/01/31
MRFA-02	RF Amplifier	OPHIR	5056F	1005	2007/06/01	2008/06/30
MHDC-12	Dual Directional Coupler	Hewlett Packard	772D	2839A0016	-	-
MNA-01	Network Analyzer	Agilent	E8358A	US41080381	2006/02/10	2009/02/28
MNCK-01	Type N Calibration Kit	Agilent	85032F	MY41495257	2006/02/08	2009/02/28
MPB-03	Dosimetric E-Field Probe	Schmid&Partner Engineering AG	EX3DV3	3507	2008/01/25	2009/01/31
MDAE-01	Data Acquisition Electronics	Schmid&Partner Engineering AG	DAE3 V1	509	2007/06/13	2008/06/30
MSTW-16	SAR/HAC measurement System	Schmid&Partner Engineering AG	DASY4.7 Build55	I021834	N/A	N/A
MDA-07	2450MHz System Validation Dipole	Schmid&Partner Engineering AG	D2450V2	713	2006/09/27	2008/09/30
MPS-01	SAM Phantom	Schmid&Partner Engineering AG	SAMTwin Phantom V4.0	1196	-	-
MDPK-01	Dielectric probe kit	Agilent	85070D	-	-	-
MOS-05	Thermo-Hygrometer	Custom	CTH-190	810201	2008/04/03	2009/04/30
MOS-10	Digital thermometer	HANNA	Checktemp-2	MOS-10	2007/03/23	2009/03/31
-	Head2450MHz	-	-	-	Daily check Target value ± 5%	
-	Body2450MHz	-	-	-	Daily check Target value ± 5%	
-	SAR room	-	-	-	Daily check Ambient Noise<0.012W/kg	

UL Japan, Inc.

Head Office EMC Lab.

4383-326 Asama-cho, Ise-shi, Mie-ken 516-0021 JAPAN

Telephone : +81 596 24 8116

Facsimile : +81 596 24 8124

2. Dosimetry assessment setup

These measurements were performed with the automated near-field scanning system DASY4 from Schmid & Partner Engineering AG (SPEAG). The system is based on a high precision robot (working range greater than 0.9 m), which positions the probes with a positional repeatability of better than +/- 0.02 mm. Special E- and H-field probes have been developed for measurements close to material discontinuity, the sensors of which are directly loaded with a Schottky diode and connected via highly resistive lines to the data acquisition unit. The SAR measurements were conducted with the dosimetry probe ET3DV6, SN: 1700 (manufactured by SPEAG), designed in the classical triangular configuration and optimized for dosimetric evaluation. The probe has been calibrated according to the procedure described in [2] with accuracy of better than +/-10%. The spherical isotropy was evaluated with the procedure described in [3] and found to be better than +/-0.25 dB. The phantom used was the SAM Twin Phantom as described in FCC supplement C, IEEE P1528 and CENELEC EN50361.

UL Japan, Inc.

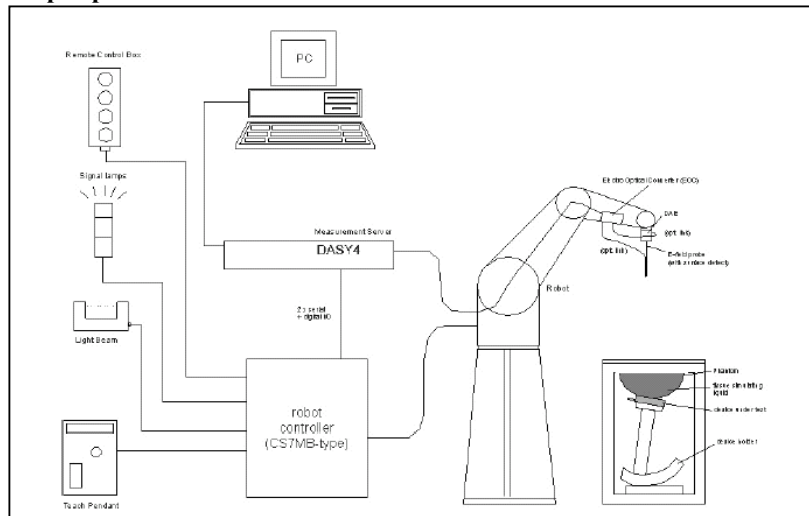
Head Office EMC Lab.

4383-326 Asama-cho, Ise-shi, Mie-ken 516-0021 JAPAN

Telephone : +81 596 24 8116

Facsimile : +81 596 24 8124

3. Configuration and peripherals



The DASY4 system for performing compliance tests consist of the following items:

1. A standard high precision 6-axis robot (Stäubli RX family) with controller and software.
An arm extension for accommodating the data acquisition electronics (DAE).
2. A dosimetric probe, i.e., an isotropic E-field probe optimized and calibrated for usage in tissue simulating liquid. The probe is equipped with an optical surface detector system.
3. A data acquisition electronic (DAE), which performs the signal amplification, signal multiplexing, AD-conversion, offset measurements, mechanical surface detection, collision detection, etc. The unit is battery powered with standard or rechargeable batteries. The signal is optically transmitted to the EOC.
4. The Electro-optical converter (EOC) performs the conversion between optical and electrical of the signals for the digital communication to the DAE and for the analog signal from the optical surface detection.
The EOC is connected to the measurement server.
5. The function of the measurement server is to perform the time critical tasks such as signal filtering, control of the robot operation and fast movement interrupts.
6. A probe alignment unit which improves the (absolute) accuracy of the probe positioning.
7. A computer operating Windows 2000.
8. DASY4 software.
9. Remote control with teaches pendant and additional circuitry for robot safety such as warning lamps, etc.
10. The SAM twin phantom enabling testing left-hand and right-hand usage.
11. The device holder for handheld mobile phones.
12. Tissue simulating liquid mixed according to the given recipes.
13. Validation dipole kits allowing to validate the proper functioning of the system.

UL Japan, Inc.

Head Office EMC Lab.

4383-326 Asama-cho, Ise-shi, Mie-ken 516-0021 JAPAN

Telephone : +81 596 24 8116

Facsimile : +81 596 24 8124

4. System components

EX3DV3 Probe Specification

Construction:

Symmetrical design with triangular core
Built-in shielding against static charges
PEEK enclosure material (resistant to organic solvents, e.g., glycol ether)

Calibration:

Basic Broad Band calibration in air : 10-3000 MHz
Conversion Factors (Head and Body):
900 MHz, 1640MHz, 1810MHz, 2000MHz, 2450MHz,
5.2GHz, 5.5GHz and 5.8GHz (Head and Body)

Frequency:

10 MHz to > 6GHz; Linearity: +/-0.2 dB (30 MHz to 3 GHz)

Directivity:

+/-0.3 dB in HSL (rotation around probe axis)
+/-0.5 dB in tissue material (rotation normal probe axis)

Dynamic Range:

10uW/g to > 100 mW/g; Linearity: +/-0.2 dB (noise: typically < 1uW/g)

Dimensions:

Overall length: 330 mm (Tip: 20 mm)
Tip diameter: 2.5mm (Body: 12 mm)
Typical distance from probe tip to dipole centers: 1 mm

Application:

High precision dosimetric measurement in any exposure scenario
(e.g., very strong gradient fields). Only probe which enables compliance
testing for frequencies up to 6GHz with precision of better 30%.



EX3DV3 E-field Probe

UL Japan, Inc.

Head Office EMC Lab.

4383-326 Asama-cho, Ise-shi, Mie-ken 516-0021 JAPAN

Telephone : +81 596 24 8116

Facsimile : +81 596 24 8124

SAM Twin Phantom

Construction:

The shell corresponds to the specifications of the Specific Anthropomorphic Mannequin (SAM) phantom defined in IEEE 1528-200X, CENELEC EN 50361 and IEC 62209. It enables the dosimetric evaluation of left and right hand phone usage as well as body mounted usage at the flat phantom region. A cover prevents evaporation of the liquid. Reference markings on the phantom allow the complete setup of all predefined phantom positions and measurement grids by manually teaching three points with the robot.

Shell Thickness:

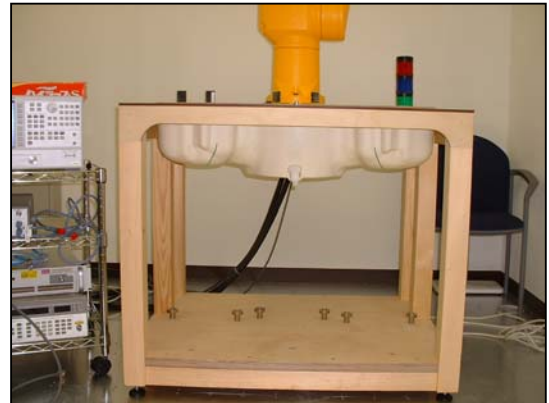
2 +/-0.2 mm

Filling Volume:

Approx. 25 liters

Dimensions:

(H x L x W): 810 x 1000 x 500 mm



SAM Twin Phantom

Device Holder

For this measurement, the urethane foam was used as device holder.

UL Japan, Inc.

Head Office EMC Lab.

4383-326 Asama-cho, Ise-shi, Mie-ken 516-0021 JAPAN

Telephone : +81 596 24 8116

Facsimile : +81 596 24 8124

5. Test system specifications

Robot RX60L

Number of Axes	:	6
Payload	:	1.6 kg
Reach	:	800mm
Repeatability	:	+/-0.025mm
Control Unit	:	CS7M
Programming Language	:	V+
Manufacture	:	Stäubli Unimation Corp. Robot Model: RX60

DASY4 Measurement server

Features	:	166MHz low power Pentium MMX 32MB chipdisk and 64MB RAM Serial link to DAE (with watchdog supervision) 16 Bit A/D converter for surface detection system Two serial links to robot (one for real-time communication which is supervised by watchdog) Ethernet link to PC (with watchdog supervision) Emergency stop relay for robot safety chain Two expansion slots for future applications
Manufacture	:	Schimid & Partner Engineering AG

Data Acquisition Electronic (DAE)

Features	:	Signal amplifier, multiplexer, A/D converter and control logic Serial optical link for communication with DASY4 embedded system (fully remote controlled) 2 step probe touch detector for mechanical surface detection and emergency robot stop (not in -R version)
Measurement Range	:	1 μ V to > 200 mV (16 bit resolution and two range settings: 4mV, 400mV)
Input Offset voltage	:	< 1 μ V (with auto zero)
Input Resistance	:	200 M Ω
Battery Power	:	> 10 h of operation (with two 9 V battery)
Dimension	:	60 x 60 x 68 mm
Manufacture	:	Schimid & Partner Engineering AG

Software

Item	:	Dosimetric Assesment System DASY4
Type No.	:	SD 000 401A, SD 000 402A
Software version No.	:	4.6
Manufacture / Origin	:	Schimid & Partner Engineering AG

E-Field Probe

Model	:	EX3DV3
Serial No.	:	3507
Construction	:	Symmetrical design with triangular core
Frequency	:	10 MHz to 6 GHz
Linearity	:	+/-0.2 dB (30 MHz to 3 GHz)
Manufacture	:	Schimid & Partner Engineering AG

Phantom

Type	:	SAM Twin Phantom V4.0
Shell Material	:	Fiberglass
Thickness	:	2.0 +/-0.2 mm
Volume	:	Approx. 25 liters
Manufacture	:	Schimid & Partner Engineering AG

UL Japan, Inc.

Head Office EMC Lab.

4383-326 Asama-cho, Ise-shi, Mie-ken 516-0021 JAPAN

Telephone : +81 596 24 8116

Facsimile : +81 596 24 8124

6. Simulated Tissues Composition of 2450MHz

Ingredient	MIXTURE(%)	
	Head 2450MHz	Muscle 2450MHz
Water	45.0	69.83
DGMBE	55.0	30.2

Note:DGMBE(Diethylenglycol-monobuthyl ether)

7. Validation Measurement

Simulated tissue liquid parameter

7-a Simulated Tissue Liquid Parameter confirmation

The dielectric parameters were checked prior to assessment using the HP85070D dielectric probe kit. The dielectric parameters measurement are reported in each correspondent section.

7-b Head 2450 MHz

Type of liquid : Head 2450 MHz
Ambient temperature (deg.c.) : 24.5(18-Jun), 24.5(20-Jun),
Relative Humidity (%) : 48 (18 to20-Jun)
Liquid depth (cm) : 15.0

DIELECTRIC PARAMETERS MEASUREMENT RESULTS								
Date	Frequency	Liquid Temp [deg.c]		Parameters	Target Value	Measured	Deviation [%]	Limit [%]
		Before	After					
18-Jun	2450	24.2	24.2	Relative Permittivity ϵ_r	39.2	37.5	-4.3	+/-5
				Coconductivity σ [mho/m]	1.80	1.87	3.9	+/-5
20-Jun	2450	24.0	24.0	Relative Permittivity ϵ_r	39.2	37.3	-4.8	+/-5
				Coconductivity σ [mho/m]	1.80	1.87	3.9	+/-5

*1 The target values is a parameter defined in FCC OET 65.

DIELECTRIC PARAMETERS MEASUREMENT RESULTS								
Date	Frequency	Liquid Temp [deg.c]		Parameters	Target Value	Measured	Deviation [%]	Limit [%]
		Before	After					
18-Jun	2450	24.2	24.2	Relative Permittivity ϵ_r	37.8	37.5	-0.8	+/-10
				Coconductivity σ [mho/m]	1.77	1.87	5.6	+/-10
20-Jun	2450	24.0	24.0	Relative Permittivity ϵ_r	37.8	37.3	-1.3	+/-10
				Coconductivity σ [mho/m]	1.77	1.87	5.6	+/-10

*2 The target value is the calibrated dipole TSL parameters. (D2450V2 SN:713)

UL Japan, Inc.

Head Office EMC Lab.

4383-326 Asama-cho, Ise-shi, Mie-ken 516-0021 JAPAN

Telephone : +81 596 24 8116

Facsimile : +81 596 24 8124

7-c Muscle 2450 MHz

Type of liquid : **Muscle 2450 MHz**
Ambient temperature (deg.c.) : **24.5**
Relative Humidity (%) : **48**
Liquid depth (cm) : **15.0**

DIELECTRIC PARAMETERS MEASUREMENT RESULTS								
Date	Frequency	Liquid Temp [deg.c]		Parameters	Target Value	Measured	Deviation [%]	Limit [%]
		Before	After					
18-Jun	2450	24.0	24.0	Relative Permittivity ϵ_r	52.7	50.4	-4.4	+/-5
				Coductivity σ [mho/m]	1.95	1.96	0.5	+/-5

UL Japan, Inc.

Head Office EMC Lab.

4383-326 Asama-cho, Ise-shi, Mie-ken 516-0021 JAPAN

Telephone : +81 596 24 8116

Facsimile : +81 596 24 8124

8. System validation data

Prior to the assessment, the system validation kit was used to test whether the system was operating within its specifications of +/-10%. The validation results are in the table below. Please refer to APPENDIX3.

System validation of 2450MHz

Type of liquid : HEAD 2450MHz
Frequency : 2450MHz
Ambient temperature (deg.c.) : 24.5(18-Jun), 24.5(20-Jun)
Relative Humidity (%) : 48 (18 to20-Jun)
Dipole : D2450V2 SN:713
Power : 250mW

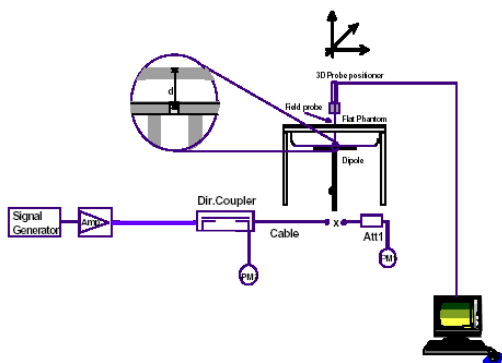
SYSTEM PERFORMANCE CHECK										
Date	Liquid (HEAD 2450MHz)						System dipole validation target & measured			
	Liquid Temp [deg.c.]		Relative Permittivity ϵ_r		Conductivity σ [mho/m]		SAR 1g [W/kg]		Deviation [%]	Limit [%]
	Before	After	Target	Measured	Target	Measured	Target*1	Measured		
18-Jun	24.2	24.2	39.2	37.5	1.80	1.87	13.1	13.3	1.5	+/-10
20-Jun	23.7	23.7	39.2	37.3	1.80	1.87	13.1	13.2	0.8	+/-10

*1 The target values is a 1g SAR value defined in IEEE Standard 1528.

SYSTEM PERFORMANCE CHECK										
Date	Liquid (HEAD 2450MHz)						System dipole validation target & measured			
	Liquid Temp [deg.c.]		Relative Permittivity ϵ_r		Conductivity σ [mho/m]		SAR 1g [W/kg]		Deviation [%]	Limit [%]
	Before	After	Target	Measured	Target	Measured	Target*2	Measured		
18-Jun	24.2	24.2	37.8	37.5	1.77	1.87	13.7	13.3	-2.9	+/-10
20-Jun	23.7	23.7	37.8	37.3	1.77	1.87	13.7	13.2	-3.6	+/-10

*2 The target value is a manufacturer calibrated dipole 1g SAR value. (D2450V2 SN:713)

Note: Please refer to Attachment for the result representation in plot format



2450MHz System performance check setup

Test system for the system performance check setup diagram

9. Validation uncertainty

The uncertainty budget has been determined for the DASY4 measurement system according to the SPEAG documents[6][7] and is given in the following Table.

Error Description	Uncertainty value \pm %	Probability distribution	divisor	(ci) 1g	Standard Uncertainty (1g)	vi or veff
Measurement System						
Probe calibration	± 6.8	Normal	1	1	± 6.8	∞
Axial isotropy of the probe	± 4.7	Rectangular	$\sqrt{3}$	1	± 2.7	∞
Spherical isotropy of the probe	± 9.6	Rectangular	0	0	0	∞
Boundary effects	± 2.0	Rectangular	$\sqrt{3}$	1	± 1.2	∞
Probe linearity	± 4.7	Rectangular	$\sqrt{3}$	1	± 2.7	∞
Detection limit	± 1.0	Rectangular	$\sqrt{3}$	1	± 0.6	∞
Readout electronics	± 0.3	Normal	1	1	± 0.3	∞
Response time	0	Rectangular	$\sqrt{3}$	1	0	∞
Integration time	0	Rectangular	$\sqrt{3}$	1	0	∞
RF ambient Noise	± 3.0	Rectangular	$\sqrt{3}$	1	± 1.7	∞
RF ambient Reflections	± 3.0	Rectangular	$\sqrt{3}$	1	± 1.7	∞
Probe Positioner	± 0.8	Rectangular	$\sqrt{3}$	1	± 0.5	∞
Probe positioning	± 9.9	Rectangular	1	1	± 5.7	∞
Algorithms for Max.SAR Eval.	± 4.0	Rectangular	$\sqrt{3}$	1	± 2.3	∞
Dipole						
Dipole Axis to Liquid Distance	± 2.0	Rectangular	$\sqrt{3}$	1	± 1.2	∞
Input power and SAR drift meas.	± 4.7	Rectangular	$\sqrt{3}$	1	± 2.7	∞
Phantom and Setup						
Phantom uncertainty	± 4.0	Rectangular	$\sqrt{3}$	1	± 2.3	∞
Liquid conductivity (target)	± 5.0	Rectangular	$\sqrt{3}$	0.64	± 1.8	∞
Liquid conductivity (meas.)	± 5.0	Rectangular	1	0.64	± 3.2	∞
Liquid permittivity (target)	± 5.0	Rectangular	$\sqrt{3}$	0.6	± 1.7	∞
Liquid permittivity (meas.)	± 5.0	Rectangular	1	0.6	± 3.0	∞
Combined Standard Uncertainty						
					± 12.079	
Expanded Uncertainty (k=2)						
					± 24.2	

UL Japan, Inc.

Head Office EMC Lab.

4383-326 Asama-cho, Ise-shi, Mie-ken 516-0021 JAPAN

Telephone : +81 596 24 8116

Facsimile : +81 596 24 8124

10. Validation Measurement data

System Validation / Dipole 2450 MHz / Forward Conducted Power : 250mW

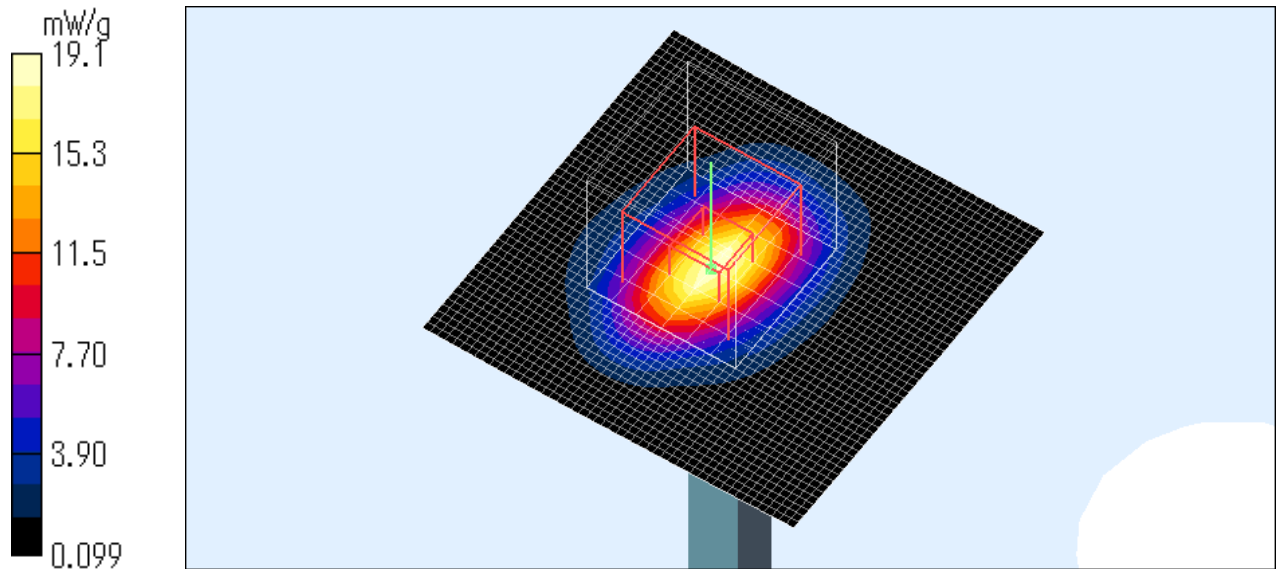
Dipole 2450 MHz;
Type: D2450V2; Serial:713

Communication System: CW; Frequency: 2450 MHz; Crest factor: 1
Medium: HSL2450 Medium parameters used: $f = 2450$ MHz; $\sigma = 1.87$ mho/m; $\epsilon_r = 37.5$; $\rho = 1000$ kg/m³
Phantom section: Flat Section
DASY4 Configuration:
- Probe: EX3DV3 - SN3507; ConvF(7.99, 7.99, 7.99); Calibrated: 2008/01/25
- Sensor-Surface: 2mm (Mechanical Surface Detection)
- Phantom: SAM 1196
- Measurement SW: DASY4, V4.7 Build 55; Postprocessing SW: SEMCAD, V1.8 Build 176

Area Scan (51x51x1): Measurement grid: dx=15mm, dy=15mm
Maximum value of SAR (interpolated) = 22.7 mW/g

Zoom Scan (7x7x7)/Cube 0: Measurement grid: dx=5mm, dy=5mm, dz=5mm
Reference Value = 101.3 V/m; Power Drift = -0.061 dB
Peak SAR (extrapolated) = 26.4 W/kg
SAR(1 g) = 13.3 mW/g; SAR(10 g) = 6.11 mW/g
Maximum value of SAR (measured) = 19.1 mW/g

Test Date = 06/18/08
Ambient Temperature = 24.5degree.c
Liquid Temperature = Before 24.2degree.C , After 24.2 degree.C



UL Japan, Inc.

Head Office EMC Lab.

4383-326 Asama-cho, Ise-shi, Mie-ken 516-0021 JAPAN

Telephone : +81 596 24 8116

Facsimile : +81 596 24 8124

System Validation / Dipole 2450 MHz / Forward Conducted Power : 250mW

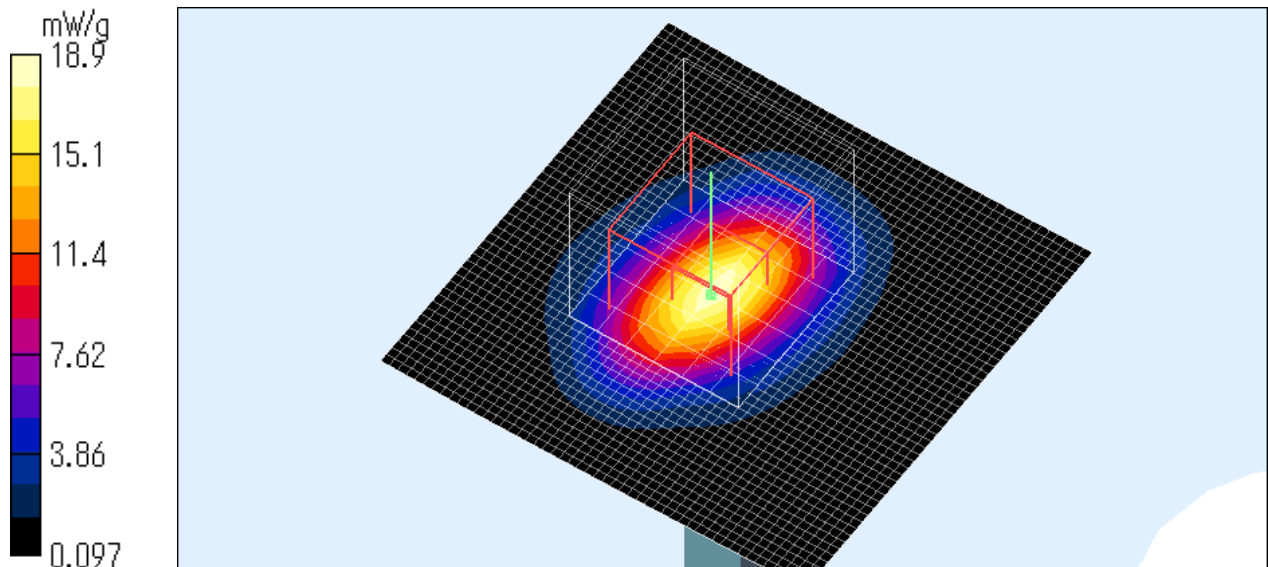
Dipole 2450 MHz;
Type: D2450V2; Serial:713

Communication System: CW; Frequency: 2450 MHz; Crest factor: 1
Medium: HSL2450 Medium parameters used: $f = 2450 \text{ MHz}$; $\sigma = 1.87 \text{ mho/m}$; $\epsilon_r = 37.3$; $\rho = 1000 \text{ kg/m}^3$
Phantom section: Flat Section
DASY4 Configuration:
- Probe: EX3DV3 - SN3507; ConvF(7.99, 7.99, 7.99); Calibrated: 2008/01/25
- Sensor-Surface: 2mm (Mechanical Surface Detection)
- Phantom: SAM 1196
- Measurement SW: DASY4, V4.7 Build 55; Postprocessing SW: SEMCAD, V1.8 Build 176

Area Scan (51x51x1): Measurement grid: $dx=15\text{mm}$, $dy=15\text{mm}$
Maximum value of SAR (interpolated) = 22.1 mW/g

Zoom Scan (7x7x7)/Cube 0: Measurement grid: $dx=5\text{mm}$, $dy=5\text{mm}$, $dz=5\text{mm}$
Reference Value = 101.2 V/m; Power Drift = -0.037 dB
Peak SAR (extrapolated) = 26.2 W/kg
SAR(1 g) = 13.2 mW/g; SAR(10 g) = 6.14 mW/g
Maximum value of SAR (measured) = 18.9 mW/g

Test Date = 06/20/08
Ambient Temperature = 24.5 degree.c
Liquid Temperature = Before 23.7 degree.C , After 23.7 degree.C



11. System Validation Dipole (D2450V2,S/N: 713)

**Calibration Laboratory of
Schmid & Partner
Engineering AG**
Zeughausstrasse 43, 8004 Zurich, Switzerland



S Schweizerischer Kalibrierdienst
C Service suisse d'étalonnage
S Servizio svizzero di taratura
S Swiss Calibration Service

Accredited by the Swiss Federal Office of Metrology and Accreditation
The Swiss Accreditation Service is one of the signatories to the EA
Multilateral Agreement for the recognition of calibration certificates

Accreditation No.: **SCS 108**

Client **ULA-pex (MTT)**

Certificate No: **D2450V2-713_Sep06**

CALIBRATION CERTIFICATE

Object: **D2450V2 - SN: 713**

Calibration procedure(s): **QA CAL-05.v6
Calibration procedure for dipole validation kits**

Calibration date: **September 27, 2006**

Condition of the calibrated item: **In Tolerance**

This calibration certificate documents the traceability to national standards, which realize the physical units of measurements (SI).
The measurements and the uncertainties with confidence probability are given on the following pages and are part of the certificate.

All calibrations have been conducted in the closed laboratory facility: environment temperature (22 ± 3)°C and humidity < 70%.

Calibration Equipment used (M&TE critical for calibration)

Primary Standards	ID #	Cal Date (Calibrated by, Certificate No.)	Scheduled Calibration
Power meter EPM-442A	GB37480704	04-Oct-05 (METAS, No. 251-00516)	Oct-06
Power sensor HP 8481A	US37292783	04-Oct-05 (METAS, No. 251-00516)	Oct-06
Reference 20 dB Attenuator	SN: 5086 (20g)	10-Aug-06 (METAS, No 217-00591)	Aug-07
Reference 10 dB Attenuator	SN: 5047.2 (10r)	10-Aug-06 (METAS, No 217-00591)	Aug-07
Reference Probe ES3DV2	SN 3025	28-Oct-05 (SPEAG, No. ES-3-3025_Oct05)	Oct-06
DAE4	SN 601	15-Dec-05 (SPEAG, No. DAE4-601_Dec05)	Dec-06
Secondary Standards	ID #	Check Date (In house)	Scheduled Check
Power sensor HP 8481A	MY41092317	18-Oct-02 (SPEAG, in house check Oct-05)	In house check: Oct-07
RF generator Agilent E4421B	MY41000675	11-May-05 (SPEAG, in house check Nov-05)	In house check: Nov-07
Network Analyzer HP 8753E	US37390585 S4206	18-Oct-01 (SPEAG, in house check Nov-05)	In house check: Nov-08

Calibrated by: **Claudio Leubler** (Name), **Laboratory Technician** (Function), *[Signature]* (Signature)

Approved by: **Katja Pokovic** (Name), **Technical Manager** (Function), *[Signature]* (Signature)

Issued: September 28, 2006

This calibration certificate shall not be reproduced except in full without written approval of the laboratory.

**Calibration Laboratory of
Schmid & Partner
Engineering AG**
Zeughausstrasse 43, 8004 Zurich, Switzerland



S Schweizerischer Kalibrierdienst
C Service suisse d'étalonnage
S Servizio svizzero di taratura
S Swiss Calibration Service

Accredited by the Swiss Federal Office of Metrology and Accreditation
The Swiss Accreditation Service is one of the signatories to the EA
Multilateral Agreement for the recognition of calibration certificates

Accreditation No.: **SCS 108**

Glossary:

TSL tissue simulating liquid
ConvF sensitivity in TSL / NORM x,y,z
N/A not applicable or not measured

Calibration is Performed According to the Following Standards:

- a) IEEE Std 1528-2003, "IEEE Recommended Practice for Determining the Peak Spatial-Averaged Specific Absorption Rate (SAR) in the Human Head from Wireless Communications Devices: Measurement Techniques", December 2003
- b) CENELEC EN 50361, "Basic standard for the measurement of Specific Absorption Rate related to human exposure to electromagnetic fields from mobile phones (300 MHz - 3 GHz), July 2001
- c) Federal Communications Commission Office of Engineering & Technology (FCC OET), "Evaluating Compliance with FCC Guidelines for Human Exposure to Radiofrequency Electromagnetic Fields; Additional Information for Evaluating Compliance of Mobile and Portable Devices with FCC Limits for Human Exposure to Radiofrequency Emissions", Supplement C (Edition 01-01) to Bulletin 65

Additional Documentation:

- d) DASY4 System Handbook

Methods Applied and Interpretation of Parameters:

- *Measurement Conditions:* Further details are available from the Validation Report at the end of the certificate. All figures stated in the certificate are valid at the frequency indicated.
- *Antenna Parameters with TSL:* The dipole is mounted with the spacer to position its feed point exactly below the center marking of the flat phantom section, with the arms oriented parallel to the body axis.
- *Feed Point Impedance and Return Loss:* These parameters are measured with the dipole positioned under the liquid filled phantom. The impedance stated is transformed from the measurement at the SMA connector to the feed point. The Return Loss ensures low reflected power. No uncertainty required.
- *Electrical Delay:* One-way delay between the SMA connector and the antenna feed point. No uncertainty required.
- *SAR measured:* SAR measured at the stated antenna input power.
- *SAR normalized:* SAR as measured, normalized to an input power of 1 W at the antenna connector.
- *SAR for nominal TSL parameters:* The measured TSL parameters are used to calculate the nominal SAR result.

UL Japan, Inc.

Head Office EMC Lab.

4383-326 Asama-cho, Ise-shi, Mie-ken 516-0021 JAPAN

Telephone : +81 596 24 8116

Facsimile : +81 596 24 8124

Measurement Conditions

DASY system configuration, as far as not given on page 1.

DASY Version	DASY4	V4.7
Extrapolation	Advanced Extrapolation	
Phantom	Modular Flat Phantom V5.0	
Distance Dipole Center - TSL	10 mm	with Spacer
Zoom Scan Resolution	dx, dy, dz = 5 mm	
Frequency	2450 MHz ± 1 MHz	

Head TSL parameters

The following parameters and calculations were applied.

	Temperature	Permittivity	Conductivity
Nominal Head TSL parameters	22.0 °C	39.2	1.80 mho/m
Measured Head TSL parameters	(22.0 ± 0.2) °C	37.8 ± 6 %	1.77 mho/m ± 6 %
Head TSL temperature during test	(22.0 ± 0.2) °C	-----	-----

SAR result with Head TSL

SAR averaged over 1 cm³ (1 g) of Head TSL	condition	
SAR measured	250 mW input power	13.7 mW / g
SAR normalized	normalized to 1W	54.8 mW / g
SAR for nominal Head TSL parameters ¹	normalized to 1W	54.2 mW / g ± 17.0 % (k=2)

SAR averaged over 10 cm³ (10 g) of Head TSL	condition	
SAR measured	250 mW input power	6.39 mW / g
SAR normalized	normalized to 1W	25.6 mW / g
SAR for nominal Head TSL parameters ¹	normalized to 1W	25.3 mW / g ± 16.5 % (k=2)

¹ Correction to nominal TSL parameters according to d), chapter "SAR Sensitivities"

Body TSL parameters

The following parameters and calculations were applied.

	Temperature	Permittivity	Conductivity
Nominal Body TSL parameters	22.0 °C	52.7	1.95 mho/m
Measured Body TSL parameters	(22.0 ± 0.2) °C	52.1 ± 6 %	1.97 mho/m ± 6 %
Body TSL temperature during test	(21.7 ± 0.2) °C	---	---

SAR result with Body TSL

SAR averaged over 1 cm ³ (1 g) of Body TSL	Condition	
SAR measured	250 mW input power	13.7 mW / g
SAR normalized	normalized to 1W	54.8 mW / g
SAR for nominal Body TSL parameters ²	normalized to 1W	54.1 mW / g ± 17.0 % (k=2)

SAR averaged over 10 cm ³ (10 g) of Body TSL	Condition	
SAR measured	250 mW input power	6.34 mW / g
SAR normalized	normalized to 1W	25.4 mW / g
SAR for nominal Body TSL parameters ²	normalized to 1W	25.2 mW / g ± 16.5 % (k=2)

² Correction to nominal TSL parameters according to d), chapter "SAR Sensitivities"

UL Japan, Inc.

Head Office EMC Lab.

4383-326 Asama-cho, Ise-shi, Mie-ken 516-0021 JAPAN

Telephone : +81 596 24 8116

Facsimile : +81 596 24 8124

Appendix

Antenna Parameters with Head TSL

Impedance, transformed to feed point	51.2 Ω + 3.3 j Ω
Return Loss	- 29.3 dB

Antenna Parameters with Body TSL

Impedance, transformed to feed point	47.7 Ω + 4.0 j Ω
Return Loss	- 26.5 dB

General Antenna Parameters and Design

Electrical Delay (one direction)	1.160 ns
----------------------------------	----------

After long term use with 100W radiated power, only a slight warming of the dipole near the feedpoint can be measured.

The dipole is made of standard semirigid coaxial cable. The center conductor of the feeding line is directly connected to the second arm of the dipole. The antenna is therefore short-circuited for DC-signals.

No excessive force must be applied to the dipole arms, because they might bend or the soldered connections near the feedpoint may be damaged.

Additional EUT Data

Manufactured by	SPEAG
Manufactured on	July 5, 2002

UL Japan, Inc.

Head Office EMC Lab.

4383-326 Asama-cho, Ise-shi, Mie-ken 516-0021 JAPAN

Telephone : +81 596 24 8116

Facsimile : +81 596 24 8124

DASY4 Validation Report for Head TSL

Date/Time: 27.09.2006 11:36:11

Test Laboratory: SPEAG, Zurich, Switzerland

DUT: Dipole 2450 MHz; Type: D2450V2; Serial: D2450V2 – SN713

Communication System: CW-2450; Frequency: 2450 MHz; Duty Cycle: 1:1

Medium: HSL U10 BB

Medium parameters used: $f = 2450$ MHz; $\sigma = 1.77$ mho/m; $\epsilon_r = 37.8$; $\rho = 1000$ kg/m³

Phantom section: Flat Section

Measurement Standard: DASY4 (High Precision Assessment)

DASY4 Configuration:

- Probe: ES3DV2 - SN3025 (HF); ConvF(4.4, 4.4, 4.4); Calibrated: 28.10.2005
- Sensor-Surface: 4mm (Mechanical Surface Detection)
- Electronics: DAE4 Sn601; Calibrated: 15.12.2005
- Phantom: Flat Phantom 5.0 (front); Type: QD000P50AA; ;
- Measurement SW: DASY4, V4.7 Build 44; Postprocessing SW: SEMCAD, V1.8 Build 171

Pin = 250 mW; d = 10 mm/Zoom Scan (7x7x7)/Cube 0:

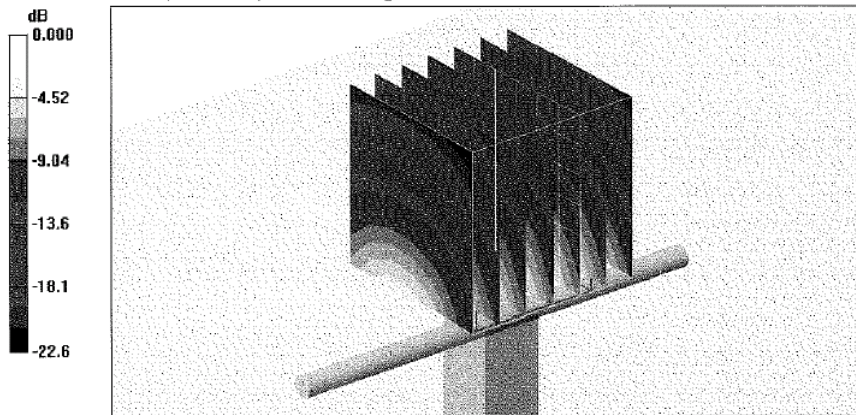
Measurement grid: dx=5mm, dy=5mm, dz=5mm

Reference Value = 91.5 V/m; Power Drift = 0.078 dB

Peak SAR (extrapolated) = 28.5 W/kg

SAR(1 g) = 13.7 mW/g; SAR(10 g) = 6.39 mW/g

Maximum value of SAR (measured) = 15.0 mW/g



UL Japan, Inc.

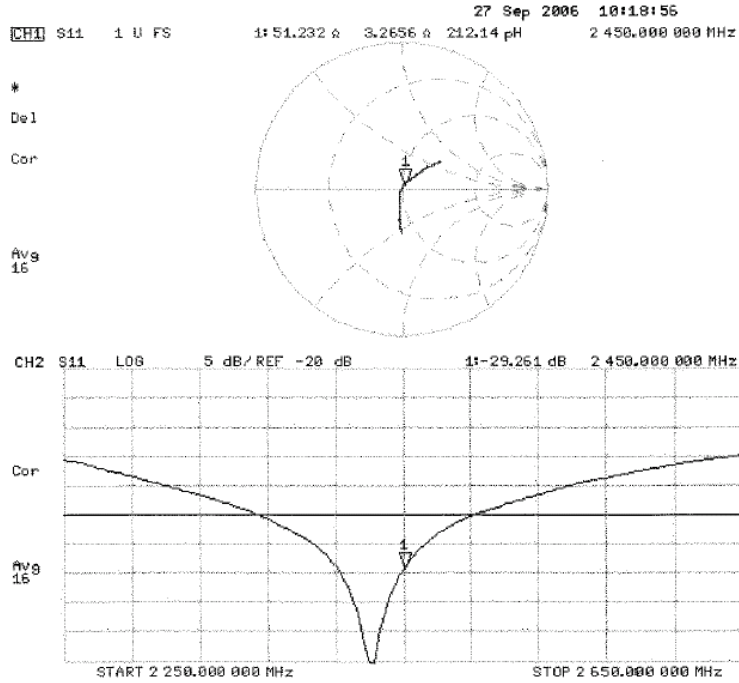
Head Office EMC Lab.

4383-326 Asama-cho, Ise-shi, Mie-ken 516-0021 JAPAN

Telephone : +81 596 24 8116

Facsimile : +81 596 24 8124

Impedance Measurement Plot for Head TSL



DASY4 Validation Report for Body TSL

Date/Time: 27.09.2006 14:23:31

Test Laboratory: SPEAG, Zurich, Switzerland

DUT: Dipole 2450 MHz; Type: D2450V2; Serial: D2450V2 – SN713

Communication System: CW-2450; Frequency: 2450 MHz; Duty Cycle: 1:1

Medium: MSL U10 BB;

Medium parameters used: $f = 2450$ MHz; $\sigma = 1.97$ mho/m; $\epsilon_r = 52.2$; $\rho = 1000$ kg/m³

Phantom section: Flat Section

Measurement Standard: DASY4 (High Precision Assessment)

DASY4 Configuration:

- Probe: ES3DV2 - SN3025 (HF); ConvF(4.06, 4.06, 4.06); Calibrated: 28.10.2005
- Sensor-Surface: 4mm (Mechanical Surface Detection)
- Electronics: DAE4 Sn601; Calibrated: 15.12.2005
- Phantom: Flat Phantom 5.0 (back); Type: QD000P50AA; ;
- Measurement SW: DASY4, V4.7 Build 44; Postprocessing SW: SEMCAD, V1.8 Build 171

Pin = 250 mW; d = 10 mm/Zoom Scan (7x7x7)/Cube 0:

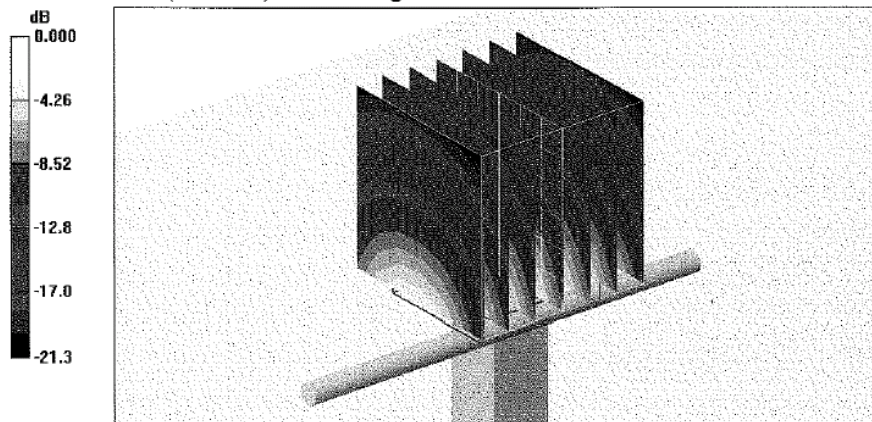
Measurement grid: dx=5mm, dy=5mm, dz=5mm

Reference Value = 89.4 V/m; Power Drift = -0.054 dB

Peak SAR (extrapolated) = 28.5 W/kg

SAR(1 g) = 13.7 mW/g; SAR(10 g) = 6.34 mW/g

Maximum value of SAR (measured) = 15.4 mW/g



0 dB = 15.4mW/g

UL Japan, Inc.

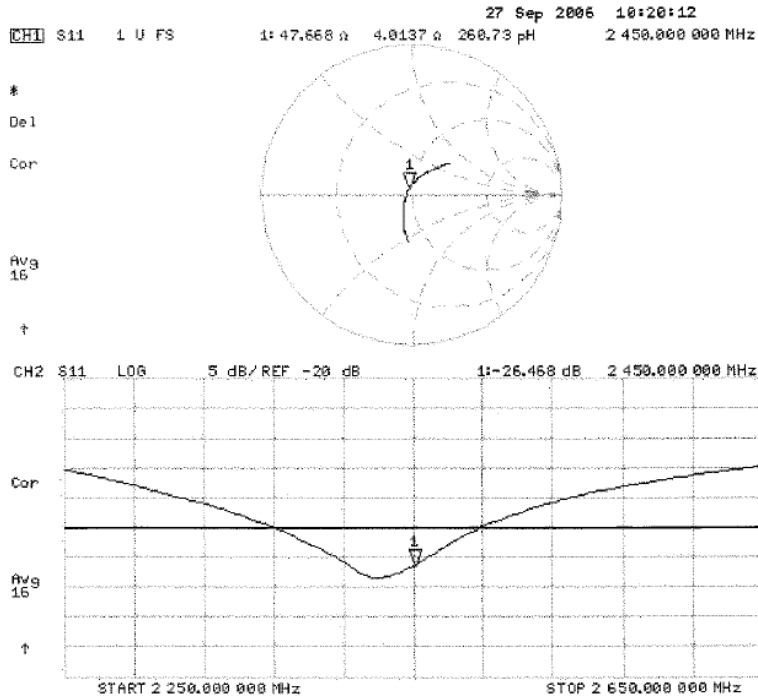
Head Office EMC Lab.

4383-326 Asama-cho, Ise-shi, Mie-ken 516-0021 JAPAN

Telephone : +81 596 24 8116

Facsimile : +81 596 24 8124

Impedance Measurement Plot for Body TSL



12. Dosimetric E-Field Probe Calibration (EX3DV3,S/N: 3507)

**Calibration Laboratory of
 Schmid & Partner
 Engineering AG**
 Zoughhausstrasse 43, 8004 Zurich, Switzerland



S Schweizerischer Kalibrierdienst
C Service suisse d'étalonnage
S Servizio svizzero di taratura
S Swiss Calibration Service

Accredited by the Swiss Accreditation Service (SAS)
 The Swiss Accreditation Service is one of the signatories to the EA
 Multilateral Agreement for the recognition of calibration certificates

Accreditation No.: **SCS 108**

Client **UL Japan (MTT)**

Certificate No: **EX3-3507_Jan08**

CALIBRATION CERTIFICATE																																																			
Object	EX3DV3 - SN:3507																																																		
Calibration procedure(s)	QA CAL-01.v6 and QA CAL-14.v3 Calibration procedure for dosimetric E-field probes																																																		
Calibration date:	January 25, 2008																																																		
Condition of the calibrated item	In Tolerance																																																		
<p>This calibration certificate documents the traceability to national standards, which realize the physical units of measurements (SI). The measurements and the uncertainties with confidence probability are given on the following pages and are part of the certificate.</p> <p>All calibrations have been conducted in the closed laboratory facility: environment temperature (22 ± 3)°C and humidity < 70%.</p> <p>Calibration Equipment used (M&TE critical for calibration)</p> <table border="1"> <thead> <tr> <th>Primary Standards</th> <th>ID #</th> <th>Cal Date (Calibrated by, Certificate No.)</th> <th>Scheduled Calibration</th> </tr> </thead> <tbody> <tr> <td>Power meter E4419B</td> <td>GB41293874</td> <td>29-Mar-07 (METAS, No. 217-00670)</td> <td>Mar-08</td> </tr> <tr> <td>Power sensor E4412A</td> <td>MY41495277</td> <td>29-Mar-07 (METAS, No. 217-00670)</td> <td>Mar-08</td> </tr> <tr> <td>Power sensor E4412A</td> <td>MY41498087</td> <td>29-Mar-07 (METAS, No. 217-00670)</td> <td>Mar-08</td> </tr> <tr> <td>Reference 3 dB Attenuator</td> <td>SN: S5054 (3c)</td> <td>8-Aug-07 (METAS, No. 217-00719)</td> <td>Aug-08</td> </tr> <tr> <td>Reference 20 dB Attenuator</td> <td>SN: S5086 (20b)</td> <td>29-Mar-07 (METAS, No. 217-00671)</td> <td>Mar-08</td> </tr> <tr> <td>Reference 30 dB Attenuator</td> <td>SN: S5129 (30b)</td> <td>8-Aug-07 (METAS, No. 217-00720)</td> <td>Aug-08</td> </tr> <tr> <td>Reference Probe ES3DV2</td> <td>SN: 3013</td> <td>2-Jan-08 (SPEAG, No. ES3-3013_Jan08)</td> <td>Jan-09</td> </tr> <tr> <td>DAE4</td> <td>SN: 654</td> <td>20-Apr-07 (SPEAG, No. DAE4-654_Apr07)</td> <td>Apr-08</td> </tr> </tbody> </table> <table border="1"> <thead> <tr> <th>Secondary Standards</th> <th>ID #</th> <th>Check Date (in house)</th> <th>Scheduled Check</th> </tr> </thead> <tbody> <tr> <td>RF generator HP 8648C</td> <td>US3642U01700</td> <td>4-Aug-99 (SPEAG, in house check Oct-07)</td> <td>In house check: Oct-09</td> </tr> <tr> <td>Network Analyzer HP 8753E</td> <td>US37390585</td> <td>18-Oct-01 (SPEAG, in house check Oct-07)</td> <td>In house check: Oct-08</td> </tr> </tbody> </table>				Primary Standards	ID #	Cal Date (Calibrated by, Certificate No.)	Scheduled Calibration	Power meter E4419B	GB41293874	29-Mar-07 (METAS, No. 217-00670)	Mar-08	Power sensor E4412A	MY41495277	29-Mar-07 (METAS, No. 217-00670)	Mar-08	Power sensor E4412A	MY41498087	29-Mar-07 (METAS, No. 217-00670)	Mar-08	Reference 3 dB Attenuator	SN: S5054 (3c)	8-Aug-07 (METAS, No. 217-00719)	Aug-08	Reference 20 dB Attenuator	SN: S5086 (20b)	29-Mar-07 (METAS, No. 217-00671)	Mar-08	Reference 30 dB Attenuator	SN: S5129 (30b)	8-Aug-07 (METAS, No. 217-00720)	Aug-08	Reference Probe ES3DV2	SN: 3013	2-Jan-08 (SPEAG, No. ES3-3013_Jan08)	Jan-09	DAE4	SN: 654	20-Apr-07 (SPEAG, No. DAE4-654_Apr07)	Apr-08	Secondary Standards	ID #	Check Date (in house)	Scheduled Check	RF generator HP 8648C	US3642U01700	4-Aug-99 (SPEAG, in house check Oct-07)	In house check: Oct-09	Network Analyzer HP 8753E	US37390585	18-Oct-01 (SPEAG, in house check Oct-07)	In house check: Oct-08
Primary Standards	ID #	Cal Date (Calibrated by, Certificate No.)	Scheduled Calibration																																																
Power meter E4419B	GB41293874	29-Mar-07 (METAS, No. 217-00670)	Mar-08																																																
Power sensor E4412A	MY41495277	29-Mar-07 (METAS, No. 217-00670)	Mar-08																																																
Power sensor E4412A	MY41498087	29-Mar-07 (METAS, No. 217-00670)	Mar-08																																																
Reference 3 dB Attenuator	SN: S5054 (3c)	8-Aug-07 (METAS, No. 217-00719)	Aug-08																																																
Reference 20 dB Attenuator	SN: S5086 (20b)	29-Mar-07 (METAS, No. 217-00671)	Mar-08																																																
Reference 30 dB Attenuator	SN: S5129 (30b)	8-Aug-07 (METAS, No. 217-00720)	Aug-08																																																
Reference Probe ES3DV2	SN: 3013	2-Jan-08 (SPEAG, No. ES3-3013_Jan08)	Jan-09																																																
DAE4	SN: 654	20-Apr-07 (SPEAG, No. DAE4-654_Apr07)	Apr-08																																																
Secondary Standards	ID #	Check Date (in house)	Scheduled Check																																																
RF generator HP 8648C	US3642U01700	4-Aug-99 (SPEAG, in house check Oct-07)	In house check: Oct-09																																																
Network Analyzer HP 8753E	US37390585	18-Oct-01 (SPEAG, in house check Oct-07)	In house check: Oct-08																																																
Calibrated by:	Name: Katja Pokovic	Function: Technical Manager	Signature:																																																
Approved by:	Name: Niels Kuster	Function: Quality Manager	Signature:																																																
Issued: January 25, 2008																																																			
This calibration certificate shall not be reproduced except in full without written approval of the laboratory.																																																			

**Calibration Laboratory of
Schmid & Partner
Engineering AG**
Zeughausstrasse 43, 8004 Zurich, Switzerland



S Schweizerischer Kalibrierdienst
C Service suisse d'étalonnage
S Servizio svizzero di taratura
S Swiss Calibration Service

Accredited by the Swiss Accreditation Service (SAS)
The Swiss Accreditation Service is one of the signatories to the EA
Multilateral Agreement for the recognition of calibration certificates

Accreditation No.: **SCS 108**

Glossary:

TSL	tissue simulating liquid
NORM _{x,y,z}	sensitivity in free space
ConF	sensitivity in TSL / NORM _{x,y,z}
DCP	diode compression point
Polarization φ	φ rotation around probe axis
Polarization ϑ	ϑ rotation around an axis that is in the plane normal to probe axis (at measurement center), i.e., $\vartheta = 0$ is normal to probe axis

Calibration is Performed According to the Following Standards:

- IEEE Std 1528-2003, "IEEE Recommended Practice for Determining the Peak Spatial-Averaged Specific Absorption Rate (SAR) in the Human Head from Wireless Communications Devices: Measurement Techniques", December 2003
- IEC 62209-1, "Procedure to measure the Specific Absorption Rate (SAR) for hand-held devices used in close proximity to the ear (frequency range of 300 MHz to 3 GHz)", February 2005

Methods Applied and Interpretation of Parameters:

- NORM_{x,y,z}**: Assessed for E-field polarization $\vartheta = 0$ ($f \leq 900$ MHz in TEM-cell; $f > 1800$ MHz: R22 waveguide). NORM_{x,y,z} are only intermediate values, i.e., the uncertainties of NORM_{x,y,z} does not effect the E²-field uncertainty inside TSL (see below *ConvF*).
- NORM(f)_{x,y,z}** = NORM_{x,y,z} * *frequency_response* (see Frequency Response Chart). This linearization is implemented in DASY4 software versions later than 4.2. The uncertainty of the frequency response is included in the stated uncertainty of *ConvF*.
- DCP_{x,y,z}**: DCP are numerical linearization parameters assessed based on the data of power sweep (no uncertainty required). DCP does not depend on frequency nor media.
- ConvF and Boundary Effect Parameters**: Assessed in flat phantom using E-field (or Temperature Transfer Standard for $f \leq 800$ MHz) and inside waveguide using analytical field distributions based on power measurements for $f > 800$ MHz. The same setups are used for assessment of the parameters applied for boundary compensation (alpha, depth) of which typical uncertainty values are given. These parameters are used in DASY4 software to improve probe accuracy close to the boundary. The sensitivity in TSL corresponds to NORM_{x,y,z} * *ConvF* whereby the uncertainty corresponds to that given for *ConvF*. A frequency dependent *ConvF* is used in DASY version 4.4 and higher which allows extending the validity from ± 50 MHz to ± 100 MHz.
- Spherical isotropy (3D deviation from isotropy)**: in a field of low gradients realized using a flat phantom exposed by a patch antenna.
- Sensor Offset**: The sensor offset corresponds to the offset of virtual measurement center from the probe tip (on probe axis). No tolerance required.

UL Japan, Inc.

Head Office EMC Lab.

4383-326 Asama-cho, Ise-shi, Mie-ken 516-0021 JAPAN

Telephone : +81 596 24 8116

Facsimile : +81 596 24 8124

EX3DV3 SN:3507

January 25, 2008

Probe EX3DV3

SN:3507

Manufactured:	December 15, 2003
Last calibrated:	June 15, 2007
Repaired:	December 18, 2007
Recalibrated:	January 25, 2008

Calibrated for DASYS Systems

(Note: non-compatible with DASYS2 system!)

UL Japan, Inc.

Head Office EMC Lab.

4383-326 Asama-cho, Ise-shi, Mie-ken 516-0021 JAPAN

Telephone : +81 596 24 8116

Facsimile : +81 596 24 8124

EX3DV3 SN:3507

January 25, 2008

DASY - Parameters of Probe: EX3DV3 SN:3507

Sensitivity in Free Space ^A			Diode Compression ^B	
NormX	0.670 ± 10.1%	μV/(V/m) ²	DCP X	95 mV
NormY	0.740 ± 10.1%	μV/(V/m) ²	DCP Y	93 mV
NormZ	0.680 ± 10.1%	μV/(V/m) ²	DCP Z	94 mV

Sensitivity in Tissue Simulating Liquid (Conversion Factors)

Please see Page 8.

Boundary Effect

TSL	900 MHz	Typical SAR gradient: 5 % per mm		
	Sensor Center to Phantom Surface Distance	2.0 mm	3.0 mm	
	SAR _{be} [%] Without Correction Algorithm	9.2	5.7	
	SAR _{be} [%] With Correction Algorithm	0.8	0.7	

TSL	1810 MHz	Typical SAR gradient: 10 % per mm		
	Sensor Center to Phantom Surface Distance	2.0 mm	3.0 mm	
	SAR _{be} [%] Without Correction Algorithm	5.9	2.3	
	SAR _{be} [%] With Correction Algorithm	0.3	0.5	

Sensor Offset

Probe Tip to Sensor Center **1.0 mm**

The reported uncertainty of measurement is stated as the standard uncertainty of measurement multiplied by the coverage factor k=2, which for a normal distribution corresponds to a coverage probability of approximately 95%.

^A The uncertainties of NormX,Y,Z do not affect the E²-field uncertainty inside TSL (see Page 8).

^B Numerical linearization parameter: uncertainty not required.

UL Japan, Inc.

Head Office EMC Lab.

4383-326 Asama-cho, Ise-shi, Mie-ken 516-0021 JAPAN

Telephone : +81 596 24 8116

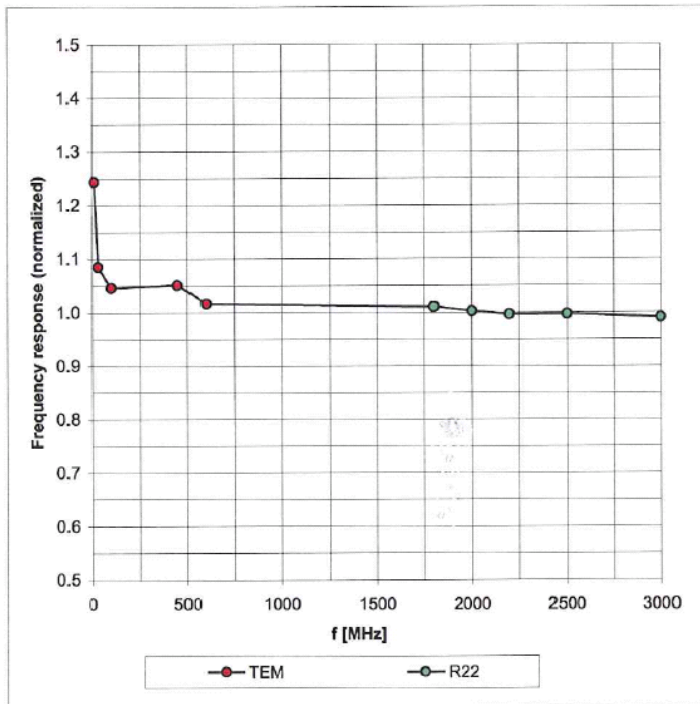
Facsimile : +81 596 24 8124

EX3DV3 SN:3507

January 25, 2008

Frequency Response of E-Field

(TEM-Cell:ifi110 EXX, Waveguide: R22)



Uncertainty of Frequency Response of E-field: $\pm 6.3\%$ (k=2)

UL Japan, Inc.

Head Office EMC Lab.

4383-326 Asama-cho, Ise-shi, Mie-ken 516-0021 JAPAN

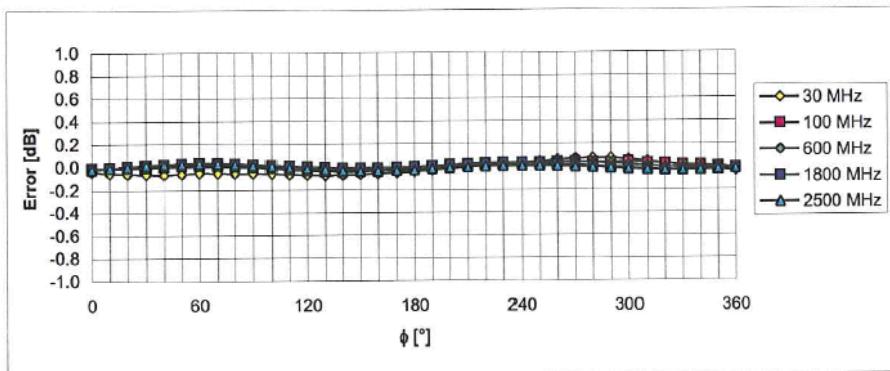
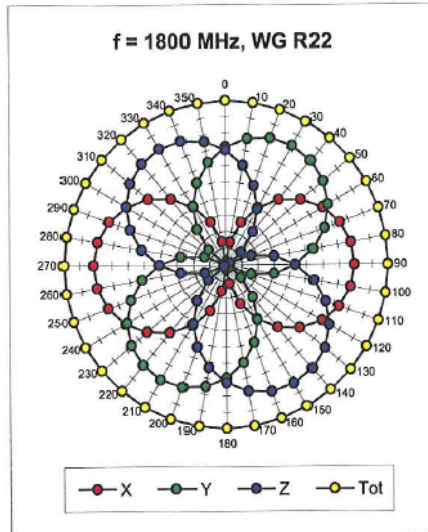
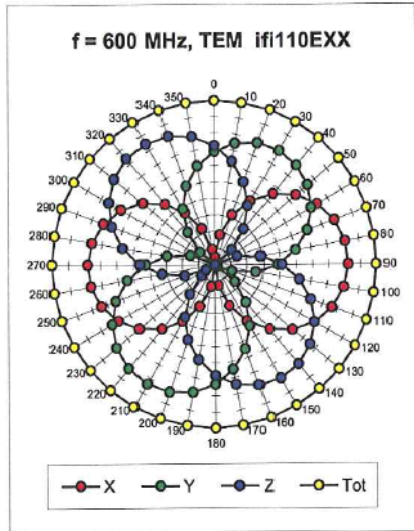
Telephone : +81 596 24 8116

Facsimile : +81 596 24 8124

EX3DV3 SN:3507

January 25, 2008

Receiving Pattern (ϕ), $\theta = 0^\circ$

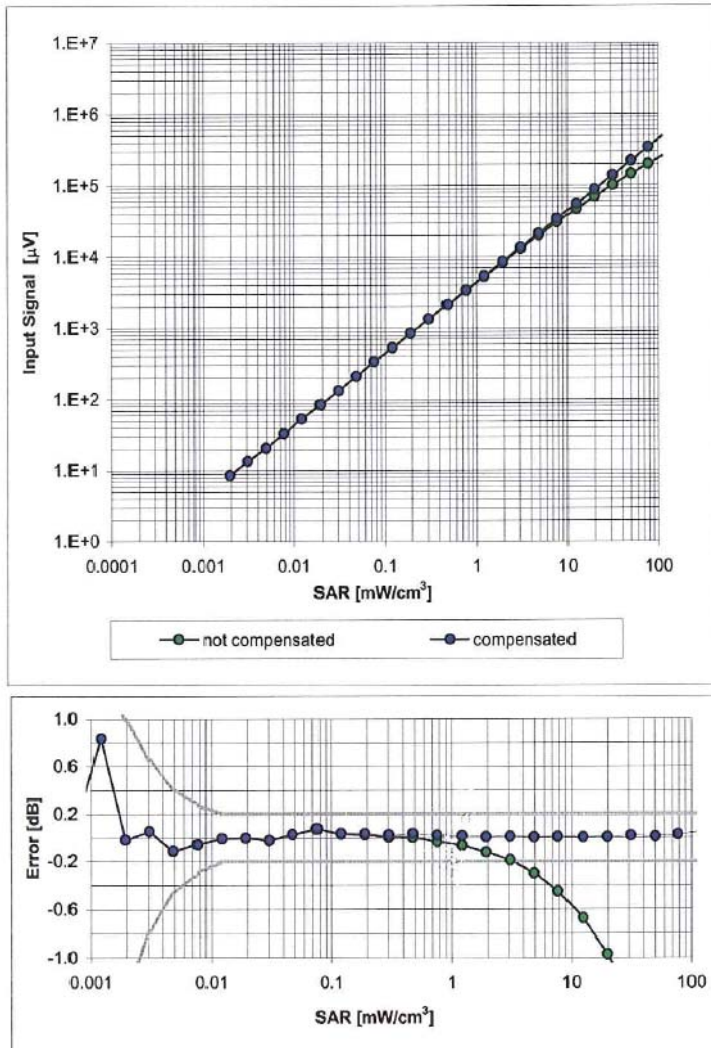


Uncertainty of Axial Isotropy Assessment: $\pm 0.5\%$ ($k=2$)

EX3DV3 SN:3507

January 25, 2008

Dynamic Range $f(\text{SAR}_{\text{head}})$ (Waveguide R22, $f = 1800 \text{ MHz}$)

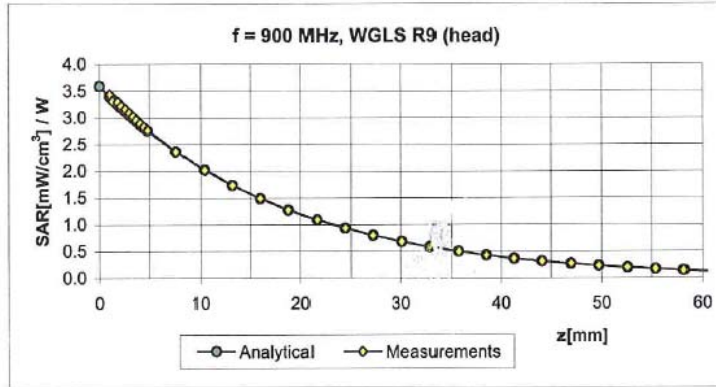


Uncertainty of Linearity Assessment: $\pm 0.6\%$ ($k=2$)

EX3DV3 SN:3507

January 25, 2008

Conversion Factor Assessment



f [MHz]	Validity [MHz] ^c	TSL	Permittivity	Conductivity	Alpha	Depth	ConvF Uncertainty
900	± 50 / ± 100	Head	41.5 ± 5%	0.97 ± 5%	0.70	0.64	11.05 ± 11.0% (k=2)
1640	± 50 / ± 100	Head	40.3 ± 5%	1.29 ± 5%	0.81	0.56	9.80 ± 11.0% (k=2)
1810	± 50 / ± 100	Head	40.0 ± 5%	1.40 ± 5%	0.89	0.52	8.86 ± 11.0% (k=2)
2000	± 50 / ± 100	Head	40.0 ± 5%	1.40 ± 5%	0.81	0.53	8.37 ± 11.0% (k=2)
2450	± 50 / ± 100	Head	39.2 ± 5%	1.80 ± 5%	0.75	0.55	7.99 ± 11.8% (k=2)
5200	± 50 / ± 100	Head	36.0 ± 5%	4.66 ± 5%	0.40	1.75	5.53 ± 13.1% (k=2)
5500	± 50 / ± 100	Head	35.6 ± 5%	4.96 ± 5%	0.40	1.75	4.99 ± 13.1% (k=2)
5800	± 50 / ± 100	Head	35.3 ± 5%	5.27 ± 5%	0.40	1.75	4.81 ± 13.1% (k=2)
900	± 50 / ± 100	Body	55.0 ± 5%	1.05 ± 5%	0.78	0.57	10.43 ± 11.0% (k=2)
1640	± 50 / ± 100	Body	53.8 ± 5%	1.40 ± 5%	0.76	0.56	9.51 ± 11.0% (k=2)
1810	± 50 / ± 100	Body	53.3 ± 5%	1.52 ± 5%	0.94	0.51	8.82 ± 11.0% (k=2)
2000	± 50 / ± 100	Body	53.3 ± 5%	1.52 ± 5%	0.71	0.60	8.34 ± 11.0% (k=2)
2450	± 50 / ± 100	Body	52.7 ± 5%	1.95 ± 5%	0.50	0.79	7.90 ± 11.8% (k=2)
5200	± 50 / ± 100	Body	49.0 ± 5%	5.30 ± 5%	0.38	1.75	4.88 ± 13.1% (k=2)
5500	± 50 / ± 100	Body	48.6 ± 5%	5.65 ± 5%	0.40	1.75	4.42 ± 13.1% (k=2)
5800	± 50 / ± 100	Body	48.2 ± 5%	6.00 ± 5%	0.30	1.75	4.64 ± 13.1% (k=2)

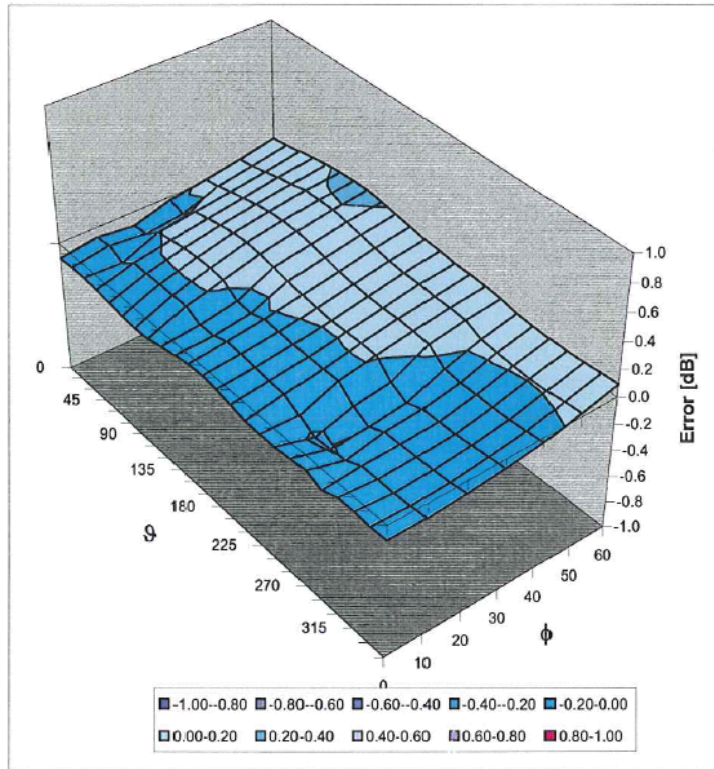
^c The validity of ± 100 MHz only applies for DASY v4.4 and higher (see Page 2). The uncertainty is the RSS of the ConvF uncertainty at calibration frequency and the uncertainty for the indicated frequency band.

EX3DV3 SN:3507

January 25, 2008

Deviation from Isotropy in HSL

Error (ϕ , θ), $f = 900$ MHz



Uncertainty of Spherical Isotropy Assessment: $\pm 2.6\%$ ($k=2$)

UL Japan, Inc.

Head Office EMC Lab.

4383-326 Asama-cho, Ise-shi, Mie-ken 516-0021 JAPAN

Telephone : +81 596 24 8116

Facsimile : +81 596 24 8124

13. References

- [1]ANSI, ANSI/IEEE C95.1-1992: IEEE Standard for Safety Levels with Respect to Human Exposure to Radio Frequency Electromagnetic Fields, 3 kHz to 300 GHz, The Institute of Electrical and Electronics Engineers, Inc., New York, NY 10017, 1992.
- [2] Katja Pokovic, Thomas Schmid, and Niels Kuster, "Robust setup for precise calibration of E-field probes in tissue simulating liquids at mobile communications frequencies", in ICECOM '97, Dubrovnik, October 15-17, 1997, pp. 120-124.
- [3] Katja Pokovic, Thomas Schmid, and Niels Kuster, "E_ field probe with improved isotropy in brain simulating liquids", in Proceedings of the ELMAR, Zadar, Croatia, 23-25 June, 1996, pp.172-175.
- [4] W. Gander, Computermathematik, Birkhaeuser, Basel, 1992.
- [5] W. H. Press, S. A. Teukolsky, W. T. Vetterling, and B. P. Flannery, Numerical Recipes in C, The Art of Scientific Computing, Second Edition, Cambridge University Press, 1992.
- [6]SPEAG uncertainty document for DASY 4 System from SPEAG (Shimid & Partner Engineering AG).
- [7]SPEAG uncertainty document for "the 5-6GHz Extension" from SPEAG (Shimid & Partner Engineering AG).

UL Japan, Inc.

Head Office EMC Lab.

4383-326 Asama-cho, Ise-shi, Mie-ken 516-0021 JAPAN

Telephone : +81 596 24 8116

Facsimile : +81 596 24 8124