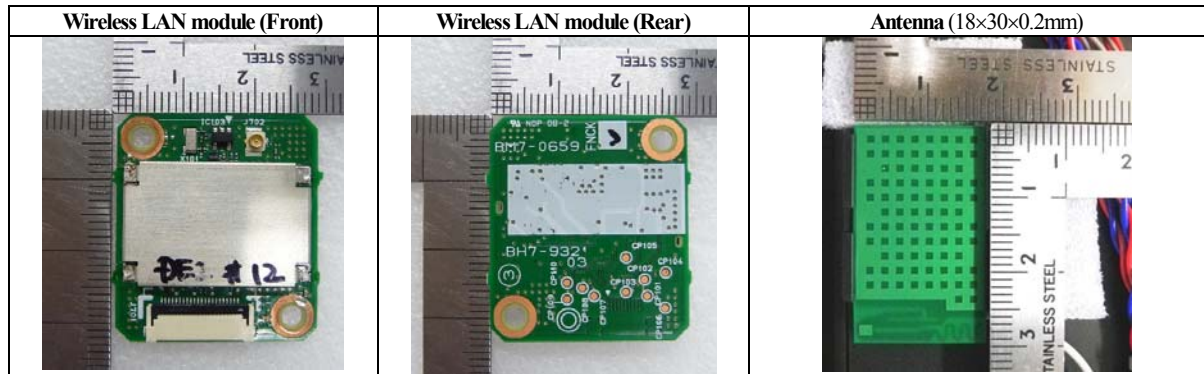
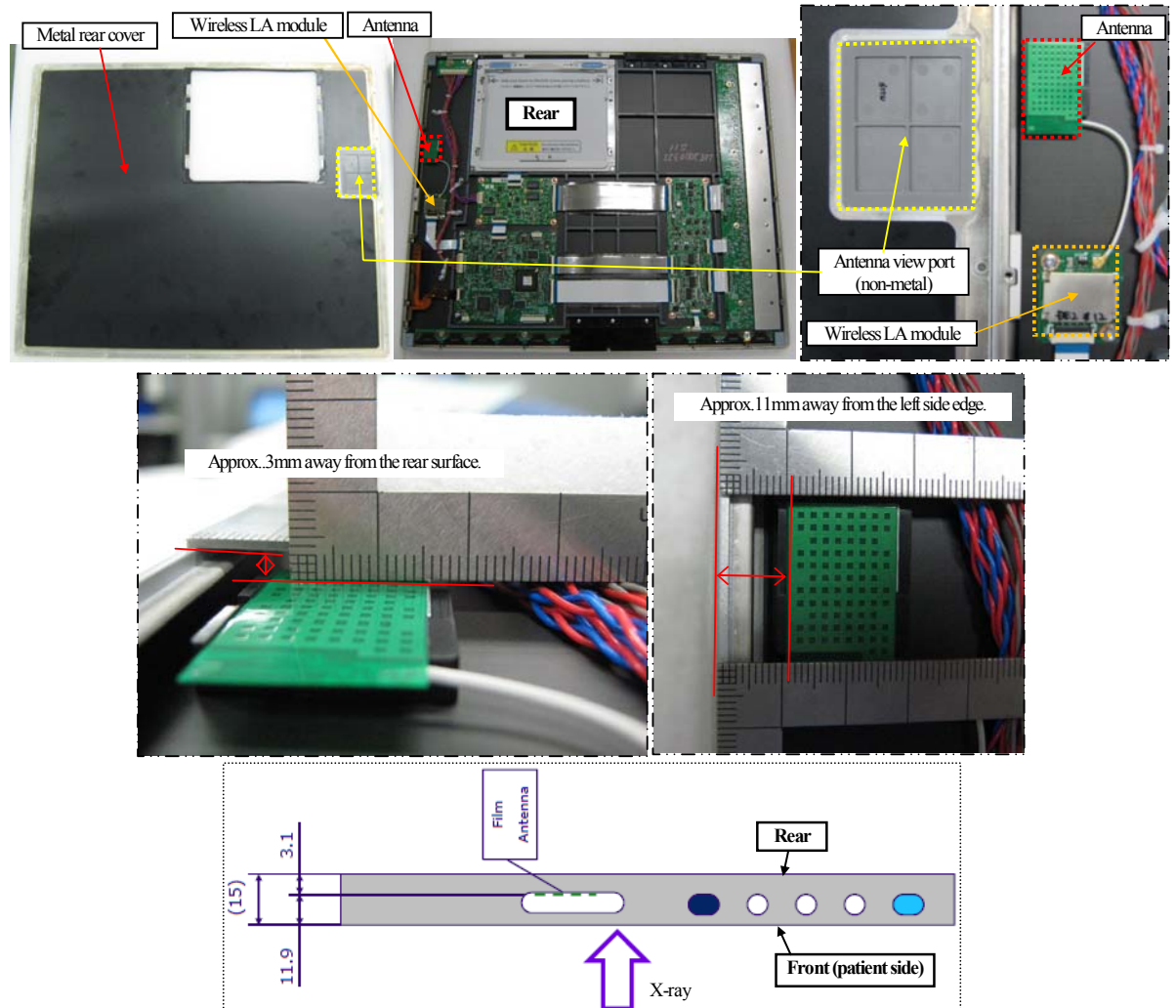


APPENDIX 1: Photographs of test setup

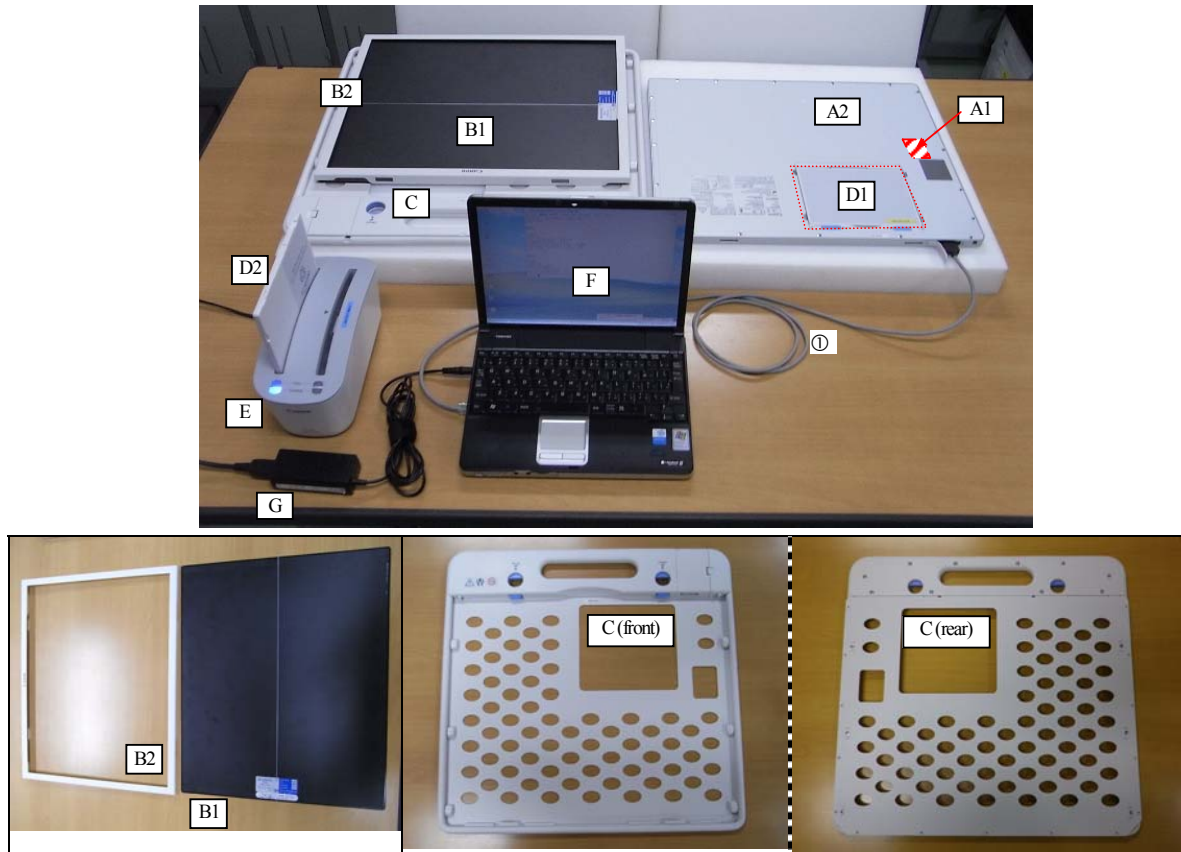
Appendix 1-1: Photograph of Wireless LAN module and antenna



Appendix 1-2: Antenna location in the platform(2)



Appendix 1-3: EUT and support equipment



Description of EUT and Support Equipment

No.	Item	Model number	Serial number	Manufacturer	Remark
A1	Wireless LAN module	BM70659	DE2-12	Canon	EUT w/Platform(2).
A2	Digital Radiography with Wireless LAN module	CXDF-70C Wireless (WM5A1)	11DR-118	Canon	
B1	ANTISCATTER GRID (383x459)	415937-284305	10D91723	Mitaya Mfg.Co.Ltd.	Accessory of EUT. (optional)
B2	Grid Frame	GF-70	1	Canon	Accessory of EUT. (optional)
C	Handle Unit	HU-1A	1	Canon	Accessory of EUT. (optional)
D1	Li-ion Battery Pack	LB-1A	1	Canon	Accessory of EUT.
D2	(11.1Vdc, Typ.2.49Ah, Min.2.4Ah,27Wh)		2		
E	Li-ion Battery Charger	BC-1A	Y1A	Canon	Support equipment. (*1)
F	Note PC	PP160N-01DQ1	25040341H	TOSHIBA	Support equipment. (*1)
G	AC Adaptor (for note PC)	PA3241U-1ACA	0501-A-0059644G	TOSHIBA	Support equipment. (*1)

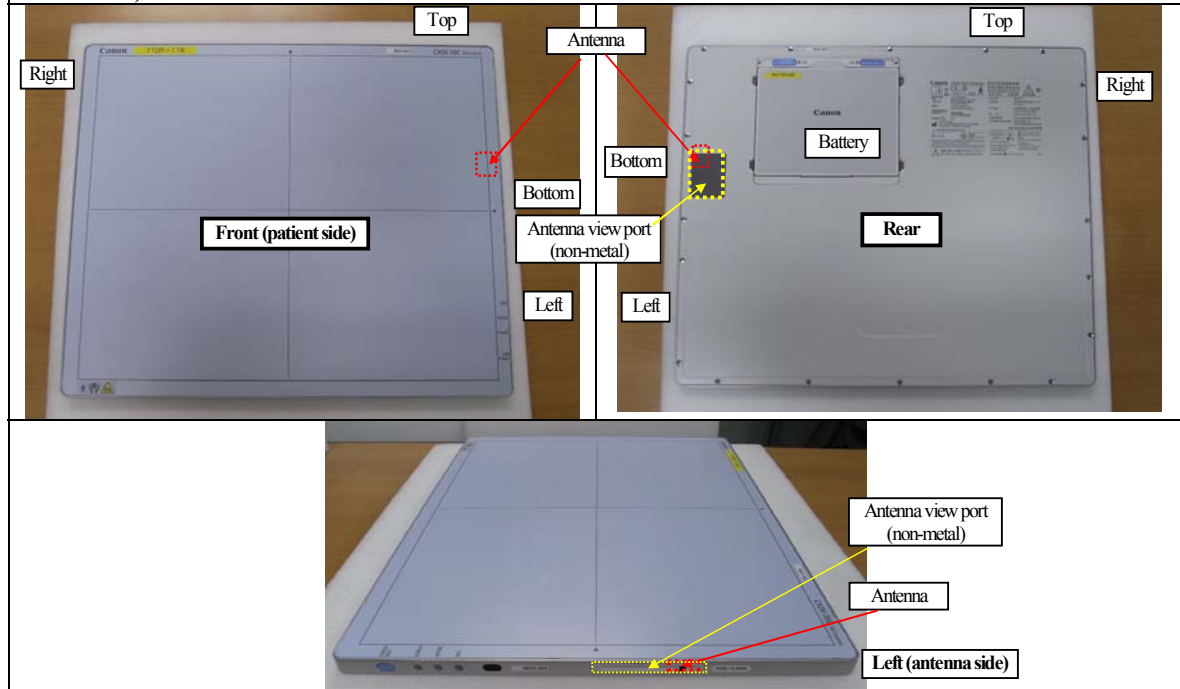
*1. During SAR measurement, these items were not connected with EUT.

List of cables used

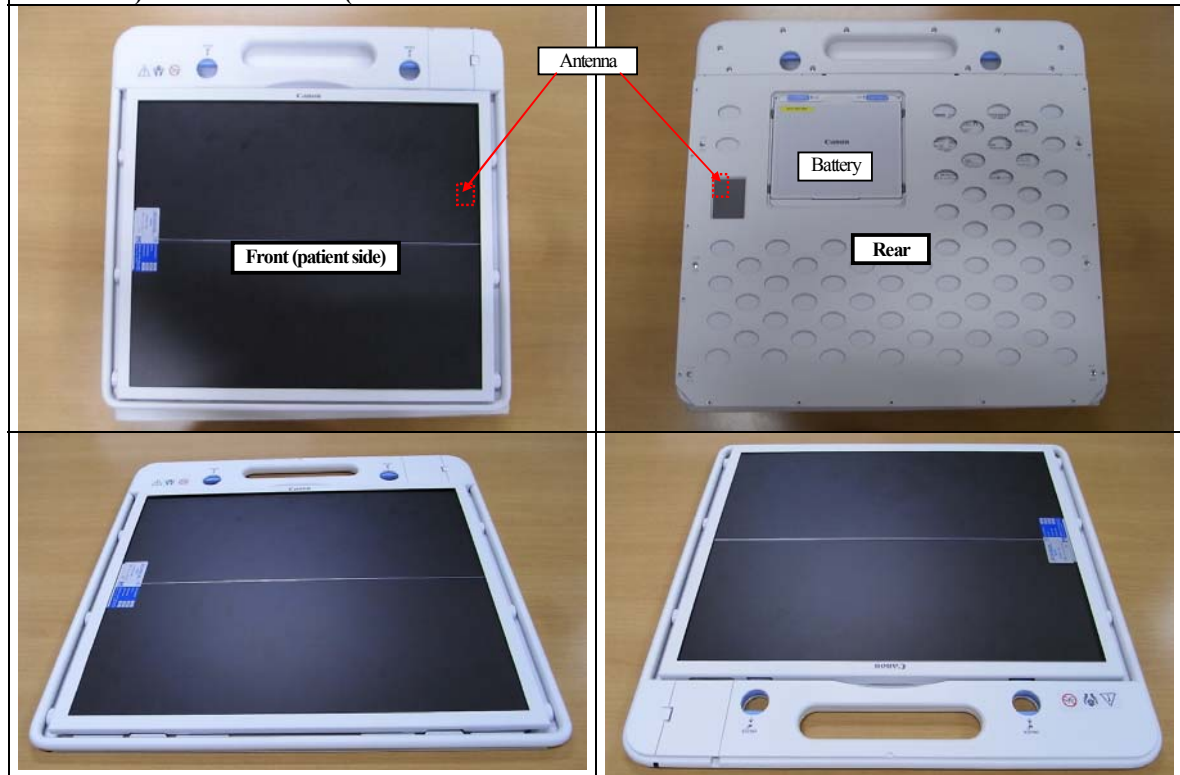
No.	Name	Length (m)	Shield	Shell type	Remark
①	LAN remote control cable	1.8	Unshielded	None	During SAR test, this cable was not connected.

Appendix 1-4: SAR test condition (with/without accessories)

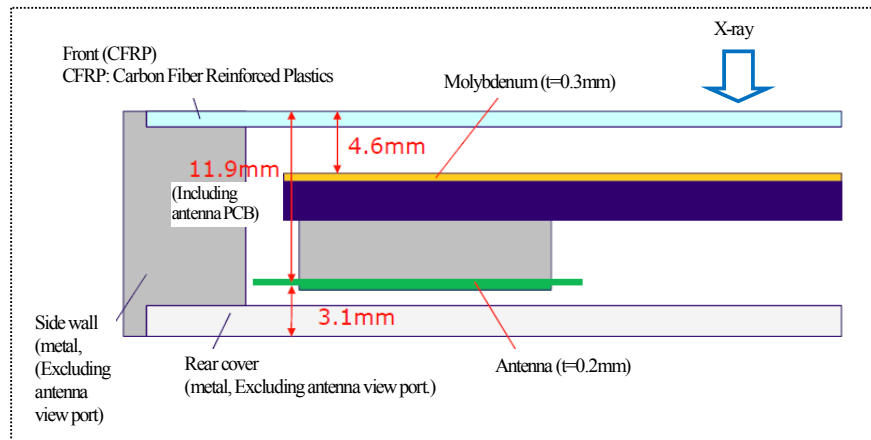
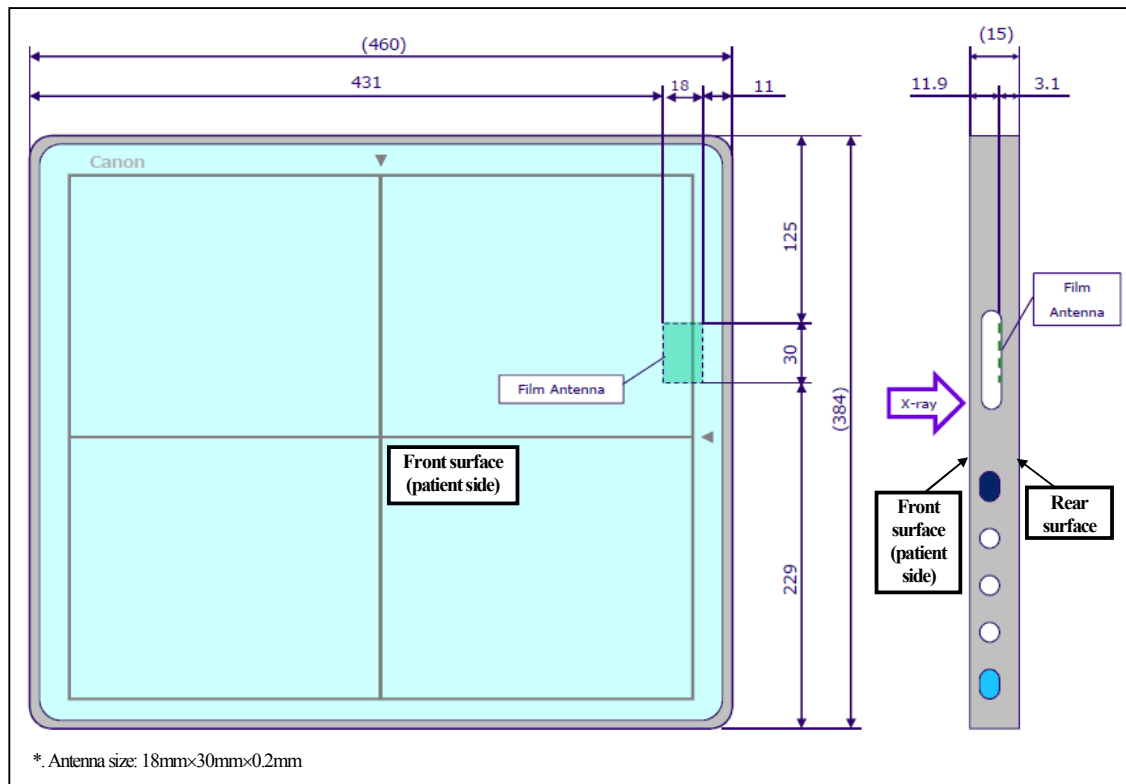
Condition 1): Without accessories



Condition 2): With accessories (an ANTI-SCATTERED GRID and a Handle unit)

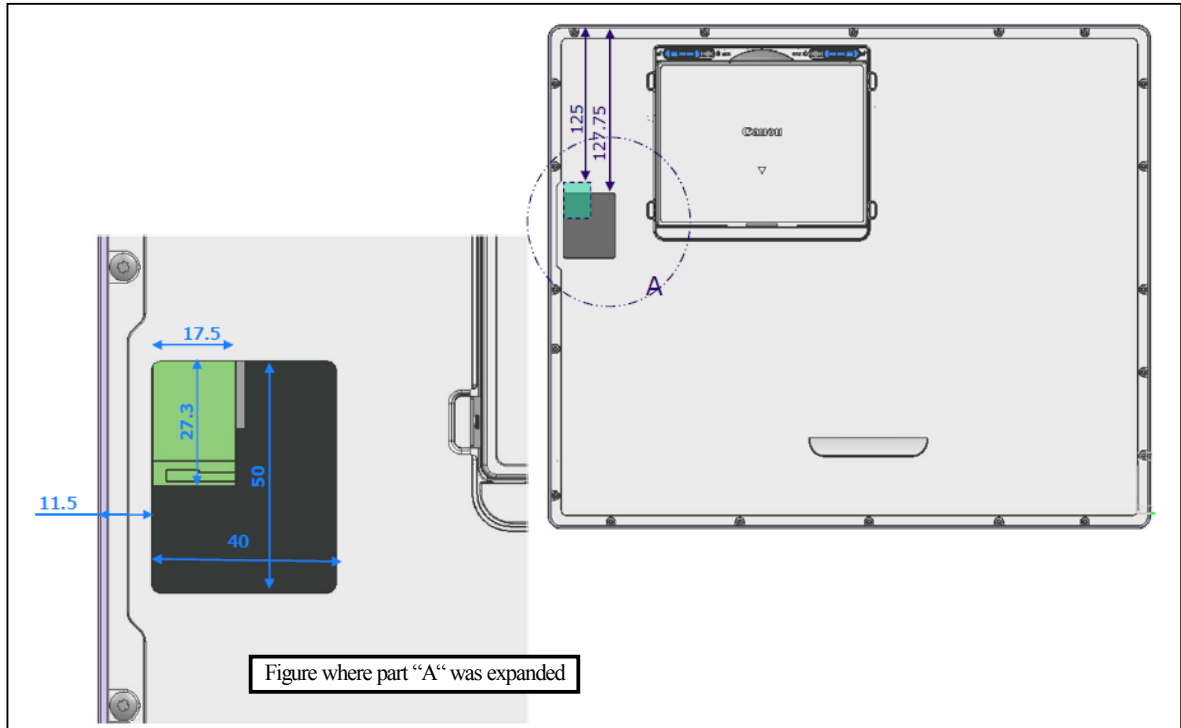


Appendix 1-5: Drawing information

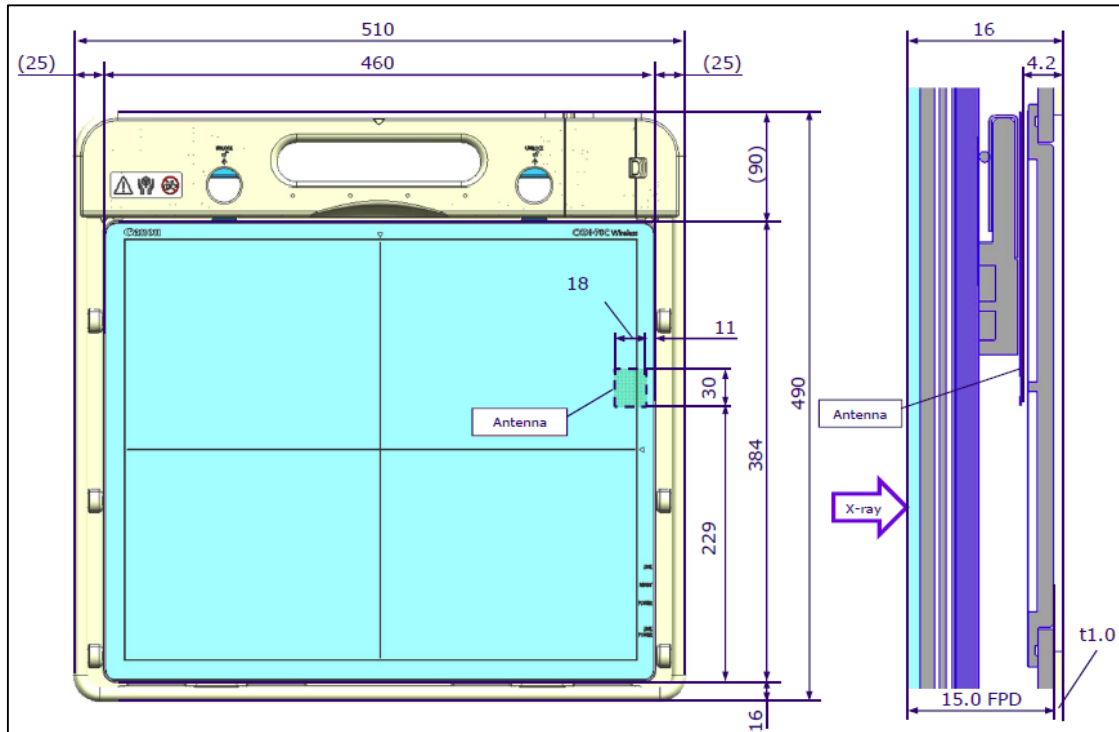


Appendix 1-5: Drawing information (cont'd)

Position of the rear antenna view port and antenna



With accessories (handle unit)



Appendix 1-6: Photograph of test setup

2.4GHz band

Without accessories; Front surface (touch)



With accessories; Front surface (touch)



Appendix 1-6: Photograph of test setup (cont'd)

5GHz band

Without accessories; Front surface (touch)



With accessories; Front surface (touch)

