

### **APPENDIX 3: Photographs of test setup**

#### **Conducted emission**



---

**UL Japan, Inc.**

**Shonan EMC Lab.**

1-22-3 Megumigaoka, Hiratsuka-shi, Kanagawa-ken, 259-1220 JAPAN

Telephone : +81 463 50 6400

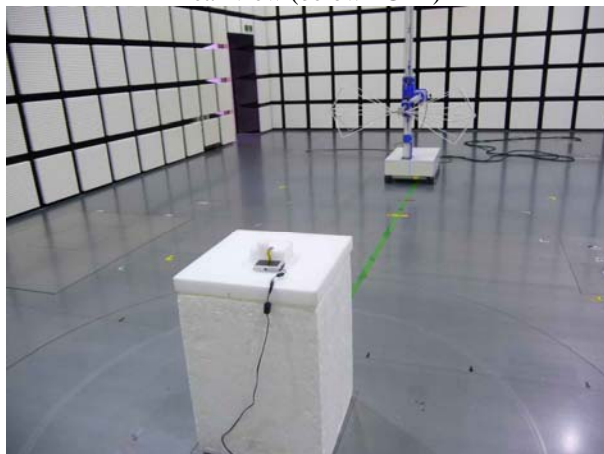
Facsimile : +81 463 50 6401

## Radiated emission

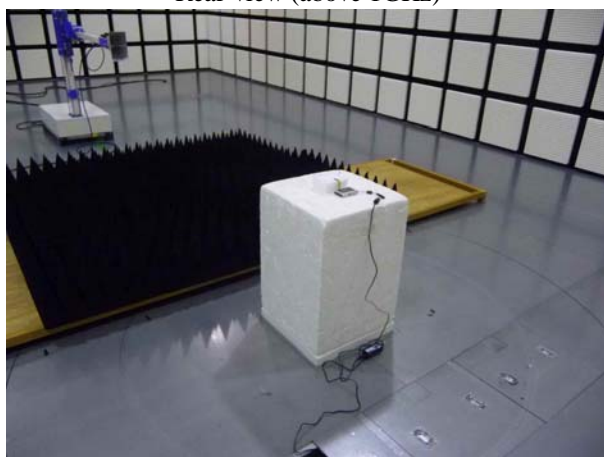
Front view



Rear view (below 1GHz)



Rear view (above 1GHz)



---

**UL Japan, Inc.**

**Shonan EMC Lab.**

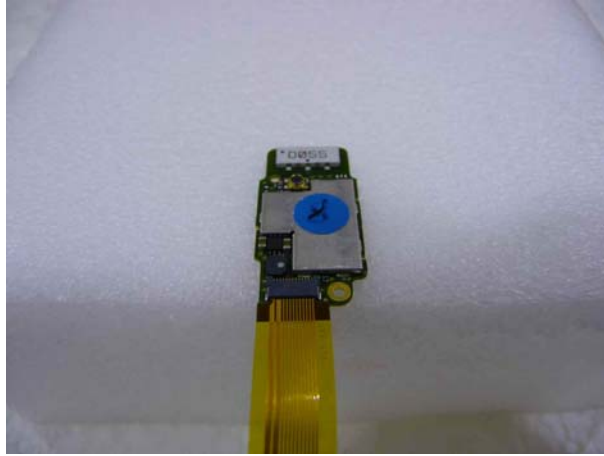
1-22-3 Megumigaoka, Hiratsuka-shi, Kanagawa-ken, 259-1220 JAPAN

Telephone : +81 463 50 6400

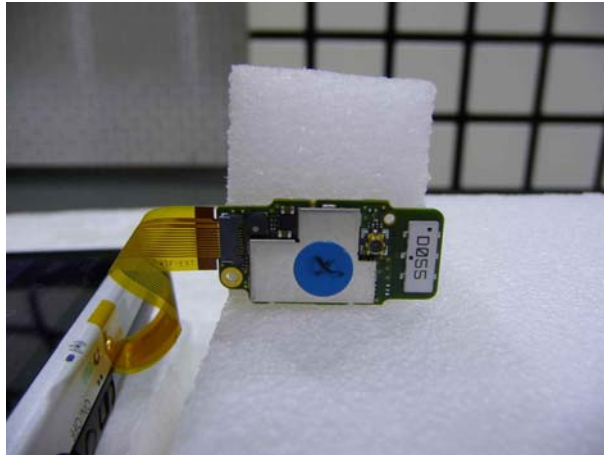
Facsimile : +81 463 50 6401

**Pre-check of the worst position**

X-axis



Y-axis



Z-axis



**END OF REPORT**

---

**UL Japan, Inc.**

**Shonan EMC Lab.**

1-22-3 Megumigaoka, Hiratsuka-shi, Kanagawa-ken, 259-1220 JAPAN

Telephone : +81 463 50 6400

Facsimile : +81 463 50 6401