

---

## **APPENDIX 2: SAR Measurement data**

### **Appendix 2-1: Evaluation procedure**

The SAR evaluation was performed with the following procedure:

- Step 1:** Measurement of the E-field at a fixed location above the central position of flat phantom was used as a reference value for assessing the power drop.
- Step 2:** The SAR distribution at the exposed side of head or body position was measured at a distance of each device from the inner surface of the shell. The area covered the entire dimension of the antenna of EUT and suitable horizontal grid spacing of EUT. Based on these data, the area of the maximum absorption was determined by splines interpolation.
- Step 3:** Around this point found in the Step 2 (area scan), a volume of 30mm(X axis)×30mm(Y axis)×30mm(Z axis) (or more) was assessed by measuring 7×7×7 points (or more) under 3GHz.  
And for any secondary peaks found in the Step2 which are within 2dB of the SAR limit (1.6W/kg), this Step3 (Zoom scan) is repeated.  
On the basis of this data set, the spatial peak SAR value was evaluated under the following procedure:
- (1) The data at the surface were extrapolated, since the center of the dipoles is 1mm away from the tip of the probe and the distance between the surface and the lowest measuring point is 2mm. The extrapolation was based on a least square algorithm. A polynomial of the fourth order was calculated through the points in z-axes. This polynomial was then used to evaluate the points between the surface and the probe tip.
  - (2) The maximum interpolated value was searched with a straightforward algorithm. Around this maximum the SAR values averaged over the spatial volumes (1g or 10g) were computed by the 3D-Spline interpolation algorithm. The 3D-Spline is composed of three one-dimensional splines with the "Not a knot"-condition (in x, y and z-directions). The volume was integrated with the trapezoidal-algorithm. One thousand points (10×10×10) were interpolated to calculate the average.
  - (3) All neighboring volumes were evaluated until no neighboring volume with a higher average value was found.
- Step 4:** Re-measurement of the E-field at the same location as in Step 1 for the assessment of the power drift.
- Step 5:** Repeat Step 1-Step 4 with other condition or/and setup of EUT.

**Appendix 2-2: SAR measurement data / Platform (1)**

**Step 1: Change the setup positions**

**Plot 1-1: Front (Lens side) & touch (separation distance=0mm) / 11b(1Mbps), 2462MHz (11ch.)**

**EUT: Wireless module/(in Digital camera); Type: WM224/(camera:PC2138); Serial: E917/(32)**

**Communication System: IEEE 802.11b(1Mbps, DBPSK/DSSS);**

**Frequency: 2462 MHz; Crest Factor: 1.0** (\*.Frame Length in ms: 0; Communication System PAR: 0 dB; PMF: 1)

**Medium: M2450; Medium parameters used: f = 2462 MHz;  $\sigma = 1.976$  S/m;  $\epsilon_r = 51.10$ ;  $\rho = 1000$  kg/m<sup>3</sup>**

Measurement Standard: DASYS5 (IEEE/IEC/ANSI C63.19-2007)

**DASY Configuration:** -Probe: EX3DV4 - SN3679; ConvF(6.82, 6.82, 6.82); Calibrated: 2013/07/22;  
-Sensor-Surface: 2mm (Mechanical Surface Detection), z = 1.0, 31.0 -Electronics: DAE4 Sn626; Calibrated: 2013/09/17  
-Phantom: ELI v4.0; Type: QDOVA001BA; Serial: 1059; Phantom section: Flat Section  
-DASY52 52.8.2(969); SEMCAD X 14.6.6(6824)

**portable,wm224(e917)+dc1\_pc2138(32)m1;pos:front(lens)&touch(d0mm),11b(1m),m2462/**

**Area Scan:96x120,12 (9x11x1):** Measurement grid: dx=12mm, dy=12mm; Maximum value of SAR (measured) = 0.278 W/kg

**Area Scan:96x120,12 (81x101x1):** Interpolated grid: dx=1.200 mm, dy=1.200 mm; Maximum value of SAR (interpolated) = 0.313 W/kg

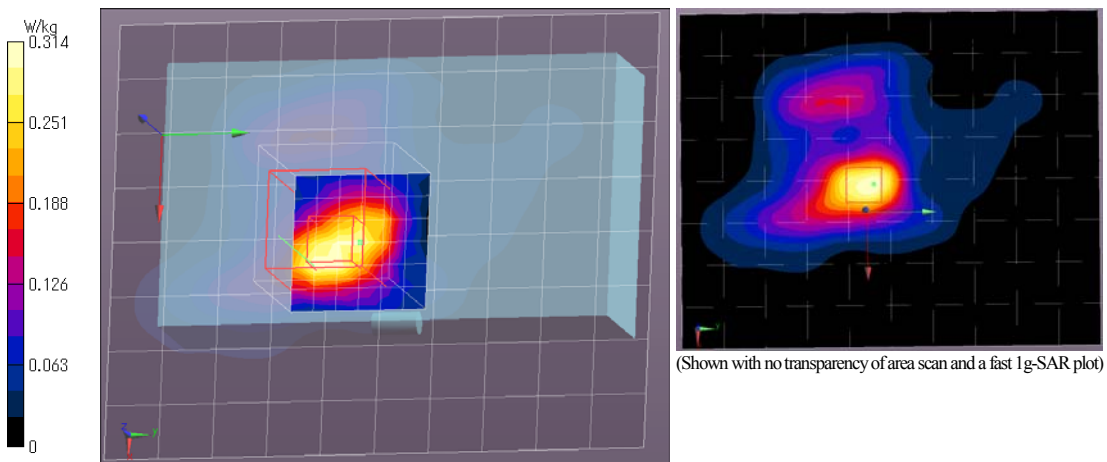
**Fast SAR(\*.Polynomial fit): SAR(1 g) = 0.195 mW/g;**

**Zoom Scan:30x30x30,5 (7x7x7)/Cube 0:** Measurement grid: dx=5mm, dy=5mm, dz=5mm;

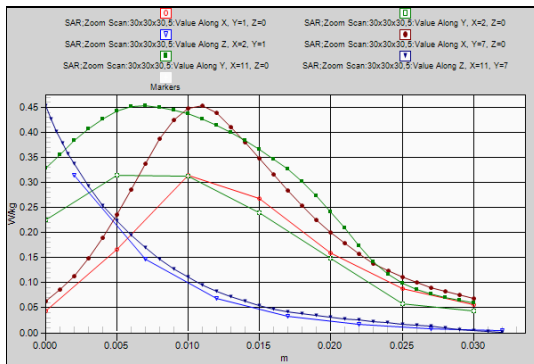
Reference Value = 12.581 V/m; Power Drift = -0.12 dB, Maximum value of SAR (measured) = 0.314 W/kg

Peak SAR (extrapolated) = 0.453 mW/g

**SAR(1 g) = 0.226 mW/g; SAR(10 g) = 0.101 mW/g**



(Shown with no transparency of area scan and a fast 1g-SAR plot)



Remarks: \* . Date tested: 2013/10/24; Tested by: Hiroshi Naka; Tested place:No.7 shielded room,  
\* liquid depth: 154mm; Position: distance of EUT to phantom: 0mm (2mm to liquid); ambient: 23.5 ± 1.0deg.C. / 45 ± 10 %RH,  
\* liquid temperature: 22.5(start)/22.4(end)/22.6(in check) deg.C.; \*.White cubic: zoom scan area, Red cubic: big=SAR(10g)/small=SAR(1g)

**Appendix 2-2: SAR measurement data / Platform (1) (cont'd)**  
**Step 1: Change the setup positions (cont'd)**

**Plot 1-2: Rear (LCD side) & touch (separation distance=0mm) / 11b(1Mbps), 2462MHz (11ch.)**

**EUT: Wireless module/(in Digital camera); Type: WM224/(camera:PC2138); Serial: E917/(32)**

**Communication System: IEEE 802.11b(1Mbps, DBPSK/DSSS);**

**Frequency: 2462 MHz; Crest Factor: 1.0** (\*.Frame Length in ms: 0; Communication System PAR: 0 dB; PMF: 1)

**Medium: M2450; Medium parameters used: f = 2462 MHz;  $\sigma = 1.976$  S/m;  $\epsilon_r = 51.10$ ;  $\rho = 1000$  kg/m<sup>3</sup>**

Measurement Standard: DASY5 (IEEE/IEC/ANSI C63.19-2007)

**DASY Configuration:** -Probe: EX3DV4 - SN3679; ConvF(6.82, 6.82, 6.82); Calibrated: 2013/07/22;  
 -Sensor-Surface: 2mm (Mechanical Surface Detection), z = 1.0, 31.0 -Electronics: DAE4 Sn626; Calibrated: 2013/09/17  
 -Phantom: ELI v4.0; Type: QDOVA001BA; Serial: 1059; Phantom section: Flat Section  
 -DASY52 52.8.2(969); SEMCAD X 14.6.6(6824)

**portable,wm224(e917)+dc1\_pc2138(32)/m2a;pos;rear(LCD)&touch(d0mm),11b(1m),m2462/**

**Area Scan:96x120,12 (9x11x1):** Measurement grid: dx=12mm, dy=12mm; Maximum value of SAR (measured) = 0.113 W/kg

**Area Scan:96x120,12 (81x101x1):** Interpolated grid: dx=1.200 mm, dy=1.200 mm; Maximum value of SAR (interpolated) = 0.127 W/kg

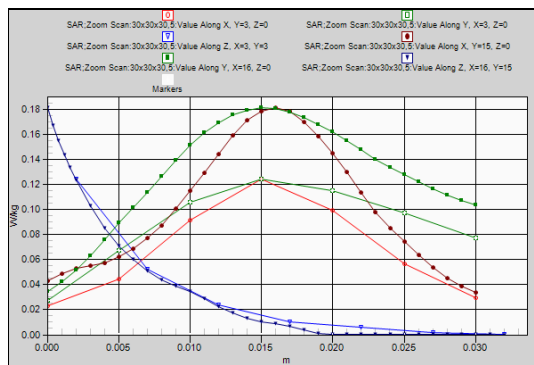
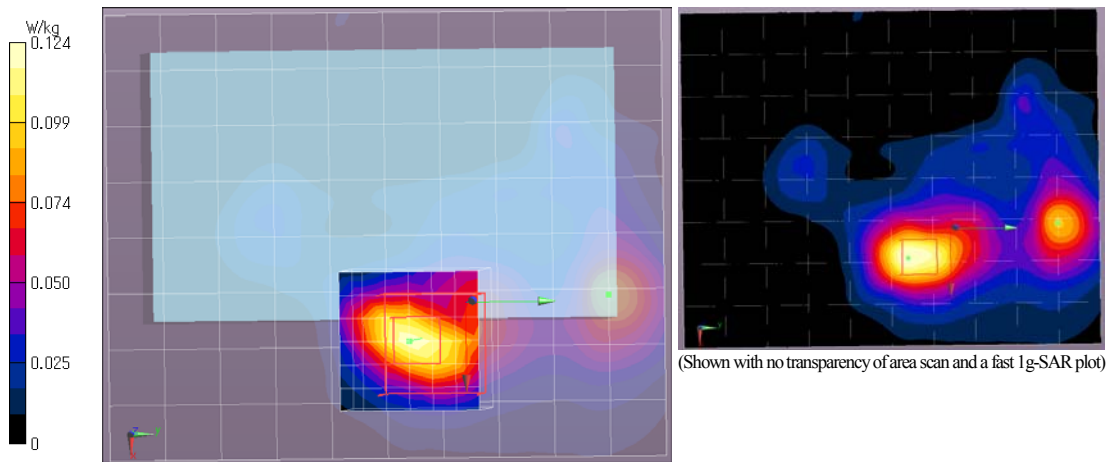
**Fast SAR(\*.Polynomial fit): SAR(1 g) = 0.081 mW/g;**

**Zoom Scan:30x30x30,5 (7x7x7)/Cube 0:** Measurement grid: dx=5mm, dy=5mm, dz=5mm;

Reference Value = 8.035 V/m; Power Drift = 0.00 dB; Maximum value of SAR (measured) = 0.124 W/kg

Peak SAR (extrapolated) = 0.181 mW/g

**SAR(1 g) = 0.075 mW/g; SAR(10 g) = 0.032 mW/g**



Remarks: \*. Date tested: 2013/10/24; Tested by: Hiroshi Naka; Tested place:No.7 shielded room,  
 \*. liquid depth: 154mm; Position: distance of EUT to phantom: 0mm (2mm to liquid); ambient: 23.5 ± 1.0deg.C. / 45 ± 10 %RH,  
 \*. liquid temperature: 22.4(start)/22.3(end)/22.6(in check) deg.C.; \*. White cubic: zoom scan area, Red cubic: big=SAR(10g)/small=SAR(1g)

**Appendix 2-2: SAR measurement data / Platform (1) (cont'd)**  
**Step 1: Change the setup positions (cont'd)**

**Plot 1-3: Top-rear & touch (separation distance=0mm) / 11b(1Mbps), 2462MHz (11ch.)**

**EUT: Wireless module/(in Digital camera); Type: WM224/(camera:PC2138); Serial: E917/(32)**

**Communication System: IEEE 802.11b(1Mbps, DBPSK/DSSS);**

**Frequency: 2462 MHz; Crest Factor: 1.0** (\*Frame Length in ms: 0; Communication System PAR: 0 dB; PMF: 1)

**Medium: M2450; Medium parameters used: f = 2462 MHz;  $\sigma = 1.976$  S/m;  $\epsilon_r = 51.10$ ;  $\rho = 1000$  kg/m<sup>3</sup>**

Measurement Standard: DASY5 (IEEE/IEC/ANSI C63.19-2007)

**DASY Configuration:** -Probe: EX3DV4 - SN3679; ConvF(6.82, 6.82, 6.82); Calibrated: 2013/07/22;  
-Sensor-Surface: 2mm (Mechanical Surface Detection), z = 1.0, 31.0, 161.0 -Electronics: DAE4 Sn626; Calibrated: 2013/09/17  
-Phantom: ELI v4.0; Type: QDOVA001BA; Serial: 1059; Phantom section: Flat Section  
-DASY52 52.8.2(969); SEMCAD X 14.6.6(6824)

**portable,wm224(e917)+dc1\_pc2138(32)/m7;pos;top-rear&touch(d0mm),11b(1m),m2462/**

**Area Scan:72x120,12 (7x11x1):** Measurement grid: dx=12mm, dy=12mm; Maximum value of SAR (measured) = 0.403 W/kg

**Area Scan:72x120,12 (61x101x1):** Interpolated grid: dx=1.200 mm, dy=1.200 mm; Maximum value of SAR (interpolated) = 0.494 W/kg

**Z Scan;160,5 (1x1x33):** Measurement grid: dx=20mm, dy=20mm, dz=5mm; Maximum value of SAR (measured) = 0.458 W/kg

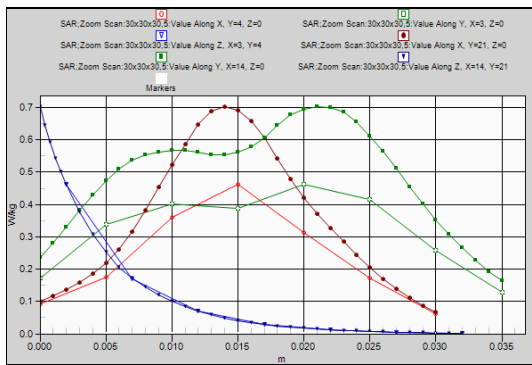
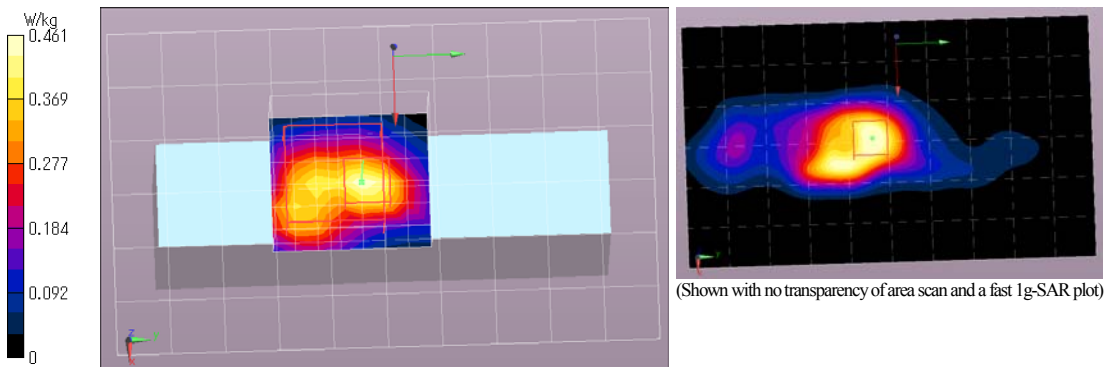
**Fast SAR(\*.Polynomial fit): SAR(1 g) = 0.306 mW/g;**

**Zoom Scan:30x35x30,5 (7x8x7)/Cube 0:** Measurement grid: dx=5mm, dy=5mm, dz=5mm;

Reference Value = 15.585 V/m; Power Drift = -0.18 dB, Maximum value of SAR (measured) = 0.461 W/kg

Peak SAR (extrapolated) = 0.702 mW/g

**SAR(1 g) = 0.263 mW/g; SAR(10 g) = 0.123 mW/g**



Remarks: \* Date tested: 2013/10/24; Tested by: Hiroshi Naka; Tested place: No.7 shielded room,  
\* liquid depth: 154mm; Position: distance of EUT to phantom: 0mm (2mm to liquid); ambient: 23.5 ± 1.0deg.C. / 45 ± 10 %RH,  
\* liquid temperature: 22.3(start)22.3(end)22.6(in check) deg.C.; \* White cubic: zoom scan area, Red cubic: big=SAR(10g) /small=SAR(1g)

**Appendix 2-2: SAR measurement data / Platform (1) (cont'd)**

**Step 1: Change the setup positions (cont'd)**

**Plot 1-4: Top & touch (separation distance=0mm) / 11b(1Mbps), 2462MHz (11ch.)**

**EUT: Wireless module/(in Digital camera); Type: WM224/(camera:PC2138); Serial: E917/(32)**

**Communication System: IEEE 802.11b(1Mbps, DBPSK/DSSS);**

**Frequency: 2462 MHz; Crest Factor: 1.0** (\*Frame Length in ms: 0; Communication System PAR: 0 dB; PMF: 1)

**Medium: M2450; Medium parameters used: f = 2462 MHz;  $\sigma = 1.976$  S/m;  $\epsilon_r = 51.10$ ;  $\rho = 1000$  kg/m<sup>3</sup>**

Measurement Standard: DASY5 (IEEE/IEC/ANSI C63.19-2007)

**DASY Configuration:** -Probe: EX3DV4 - SN3679; ConvF(6.82, 6.82, 6.82); Calibrated: 2013/07/22;  
 -Sensor-Surface: 2mm (Mechanical Surface Detection), z = 1.0, 31.0, 161.0 -Electronics: DAE4 Sn626; Calibrated: 2013/09/17  
 -Phantom: ELI v4.0; Type: QDOVA001BA; Serial: 1059; Phantom section: Flat Section  
 -DASY52 52.8.2(969); SEMCAD X 14.6.6(6824)

**portable,wm224(e917)+dc1\_pc2138(32)/m6;pos;top&touch(d0mm),11b(1m),m2462/**

**Area Scan:72x120,12 (7x11x1):** Measurement grid: dx=12mm, dy=12mm; Maximum value of SAR (measured) = 0.385 W/kg

**Area Scan:72x120,12 (61x101x1):** Interpolated grid: dx=1.200 mm, dy=1.200 mm; Maximum value of SAR (interpolated) = 0.474 W/kg

**Z Scan;160,5 (1x1x33):** Measurement grid: dx=20mm, dy=20mm, dz=5mm; Maximum value of SAR (measured) = 0.443 W/kg

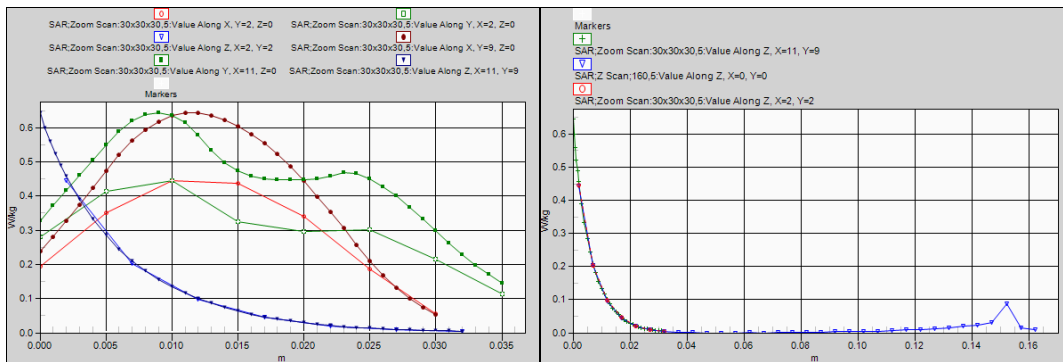
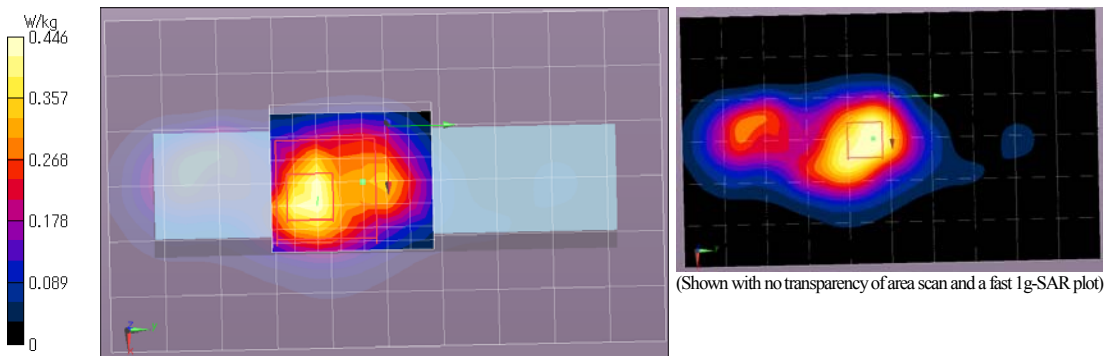
**Fast SAR(\*.Polynomial fit): SAR(1 g) = 0.306 mW/g;**

**Zoom Scan:30x35x30,5 (7x8x7)/Cube 0:** Measurement grid: dx=5mm, dy=5mm, dz=5mm;

Reference Value = 13.103 V/m; Power Drift = -0.17 dB, Maximum value of SAR (measured) = 0.446 W/kg

**Peak SAR (extrapolated) = 0.644 mW/g**

**SAR(1 g) = 0.284 mW/g; SAR(10 g) = 0.126 mW/g**



Remarks: \* Date tested: 2013/10/24; Tested by: Hiroshi Naka; Tested place: No.7 shielded room,  
 \* liquid depth: 154mm; Position: distance of EUT to phantom: 0mm (2mm to liquid); ambient: 23.5 ± 1.0deg.C. / 45 ± 10 %RH,  
 \* liquid temperature: 22.3(start)/22.3(end)/22.6(in check) deg.C.; \* White cubic: zoom scan area, Red cubic: big=SAR(10g )small=SAR(1g)

**Appendix 2-2: SAR measurement data / Platform (1) (cont'd)**  
**Step 1: Change the setup positions (cont'd)**

**Plot 1-5: 11b(1Mbps), 2437MHz (6ch.) / Top & touch (separation distance=0mm)**

**EUT: Wireless module/(in Digital camera); Type: WM224/(camera:PC2138); Serial: E917/(32)**

**Communication System: IEEE 802.11b(1Mbps, DBPSK/DSSS);**

**Frequency: 2437 MHz; Crest Factor: 1.0** (\*Frame Length in ms: 0; Communication System PAR: 0 dB; PMF: 1)

**Medium: M2450; Medium parameters used: f = 2437 MHz;  $\sigma = 1.955$  S/m;  $\epsilon_r = 51.24$ ;  $\rho = 1000$  kg/m<sup>3</sup>**

Measurement Standard: DASY5 (IEEE/IEC/ANSI C63.19-2007)

**DASY Configuration:** -Probe: EX3DV4 - SN3679; ConvF(6.82, 6.82, 6.82); Calibrated: 2013/07/22;  
 -Sensor-Surface: 2mm (Mechanical Surface Detection), z = 1.0, 31.0, 161.0 -Electronics: DAE4 Sn626; Calibrated: 2013/09/17  
 -Phantom: ELI v4.0; Type: QDOVA001BA; Serial: 1059; Phantom section: Flat Section  
 -DASY52 52.8.2(969); SEMCAD X 14.6.6(6824)

**portable,wm224(e917)+dc1\_pc2138(32)/m12;ch;top(ant)&touch(d0mm),11b(1m),m2437/**

**Area Scan:72x96,12 (7x9x1):** Measurement grid: dx=12mm, dy=12mm; Maximum value of SAR (measured) = 0.396 W/kg

**Area Scan:72x96,12 (61x81x1):** Interpolated grid: dx=1.200 mm, dy=1.200 mm; Maximum value of SAR (interpolated) = 0.504 W/kg

**Z Scan;160,5 (1x1x33):** Measurement grid: dx=20mm, dy=20mm, dz=5mm; Maximum value of SAR (measured) = 0.440 W/kg

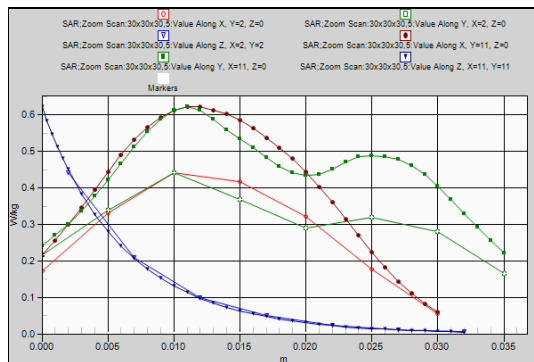
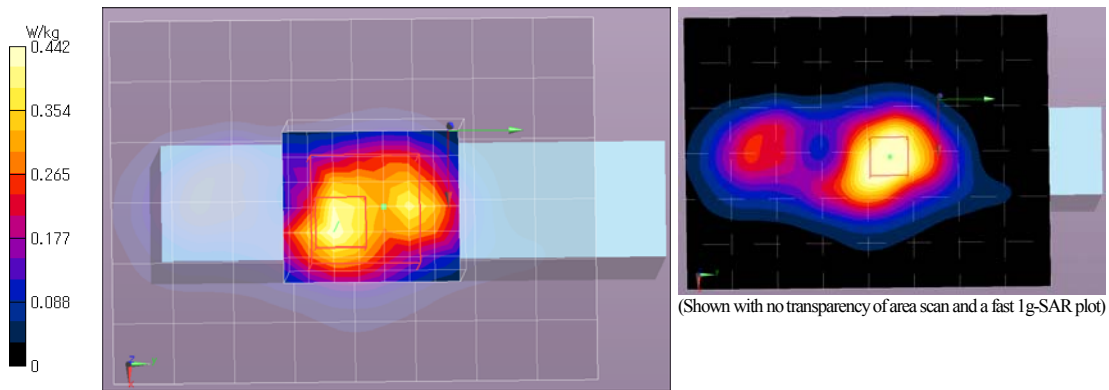
**Fast SAR(\*.Polynomial fit): SAR(1 g) = 0.324 mW/g;**

**Zoom Scan:30x35x30,5 (7x8x7)/Cube 0:** Measurement grid: dx=5mm, dy=5mm, dz=5mm;

Reference Value = 12.886 V/m; Power Drift = -0.09 dB, Maximum value of SAR (measured) = 0.442 W/kg

Peak SAR (extrapolated) = 0.622 mW/g

**SAR(1 g) = 0.275 mW/g; SAR(10 g) = 0.126 mW/g**



Remarks: \* Date tested: 2013/10/24; Tested by: Hiroshi Naka; Tested place: No.7 shielded room,  
 \* liquid depth: 154mm; Position: distance of EUT to phantom: 0mm (2mm to liquid); ambient: 23.5 ± 1.0deg.C. / 45 ± 10 %RH,  
 \* liquid temperature: 22.3(start)/22.3(end)/22.6(in check) deg.C.; \* White cubic: zoom scan area, Red cubic: big=SAR(10g )small=SAR(1g)



**Appendix 2-2: SAR measurement data / Platform (1) (cont'd)**  
**Step 1: Change the setup positions (cont'd)**

**Plot 1-6: 11b(1Mbps), 2412MHz (1ch.) / Top & touch (separation distance=0mm)**

**EUT: Wireless module/(in Digital camera); Type: WM224/(camera:PC2138); Serial: E917/(32)**

**Communication System: IEEE 802.11b(1Mbps, DBPSK/DSSS);**

**Frequency: 2412 MHz; Crest Factor: 1.0** (\*Frame Length in ms: 0; Communication System PAR: 0 dB; PMF: 1)

**Medium: M2450; Medium parameters used: f = 2412 MHz;  $\sigma = 1.913$  S/m;  $\epsilon_r = 51.36$ ;  $\rho = 1000$  kg/m<sup>3</sup>**

Measurement Standard: DASYS (IEEE/IEC/ANSI C63.19-2007)

**DASY Configuration:** -Probe: EX3DV4 - SN3679; ConvF(6.82, 6.82, 6.82); Calibrated: 2013/07/22;  
-Sensor-Surface: 2mm (Mechanical Surface Detection), z = 1.0, 31.0, 161.0 -Electronics: DAE4 Sn626; Calibrated: 2013/09/17  
-Phantom: ELI v4.0; Type: QDOVA001BA; Serial: 1059; Phantom section: Flat Section  
-DASY52 52.8.2(969); SEMCAD X 14.6.6(6824)

**portable,wm224(e917)+dc1\_pc2138(32)/m13;ch;top(ant)&touch(d0mm),11b(1m),m2412/**

**Area Scan:72x96,12 (7x9x1):** Measurement grid: dx=12mm, dy=12mm; Maximum value of SAR (measured) = 0.374 W/kg

**Area Scan:72x96,12 (61x81x1):** Interpolated grid: dx=1.200 mm, dy=1.200 mm; Maximum value of SAR (interpolated) = 0.538 W/kg

**Z Scan;160,5 (1x1x33):** Measurement grid: dx=20mm, dy=20mm, dz=5mm; Maximum value of SAR (measured) = 0.387 W/kg

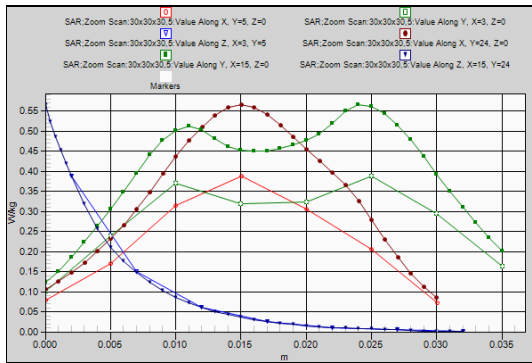
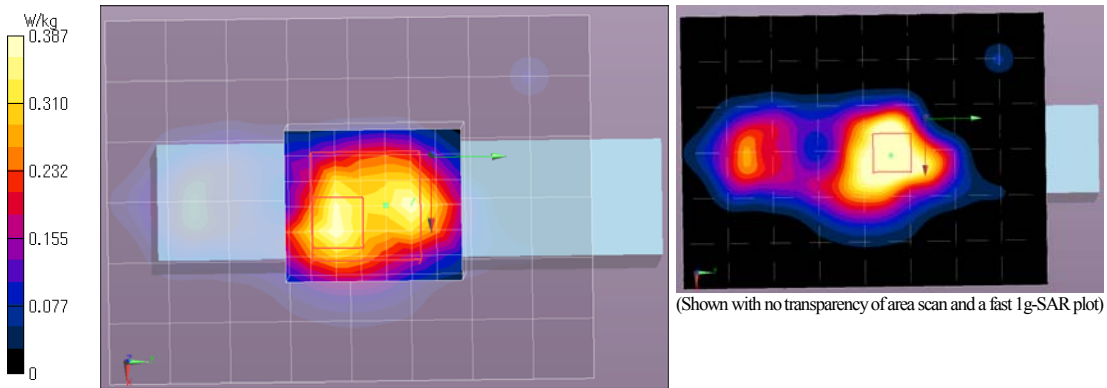
**Fast SAR(\*.Polynomial fit): SAR(1 g) = 0.328 mW/g;**

**Zoom Scan:30x35x30,5 (7x8x7)/Cube 0:** Measurement grid: dx=5mm, dy=5mm, dz=5mm;

Reference Value = 13.267 V/m; Power Drift = 0.01 dB, Maximum value of SAR (measured) = 0.387 W/kg

Peak SAR (extrapolated) = 0.566 mW/g

**SAR(1 g) = 0.241 mW/g; SAR(10 g) = 0.118 mW/g**



Remarks: \* Date tested: 2013/10/24; Tested by: Hiroshi Naka; Tested place: No.7 shielded room,  
\* liquid depth: 154mm; Position: distance of EUT to phantom: 0mm (2mm to liquid); ambient: 23.5 ± 1.0deg.C. / 45 ± 10 %RH,  
\* liquid temperature: 22.3(start)/22.3(end)/22.6(in check) deg.C.; \* White cubic: zoom scan area, Red cubic: big=SAR(10g )small=SAR(1g)

**Appendix 2-2: SAR measurement data / Platform (1) (cont'd)**  
**Step 1: Change the setup positions (cont'd)**

**Plot 1-7: Left & touch (separation distance=0mm) / 11b(1Mbps), 2462MHz (11ch.)**

**EUT: Wireless module/(in Digital camera); Type: WM224/(camera:PC2138); Serial: E917/(32)**

**Communication System: IEEE 802.11b(1Mbps, DBPSK/DSSS);**

**Frequency: 2462 MHz; Crest Factor: 1.0** (\*Frame Length in ms: 0; Communication System PAR: 0 dB; PMF: 1)

**Medium: M2450; Medium parameters used: f = 2462 MHz;  $\sigma = 1.976$  S/m;  $\epsilon_r = 51.10$ ;  $\rho = 1000$  kg/m<sup>3</sup>**

Measurement Standard: DASY5 (IEEE/IEC/ANSI C63.19-2007)

**DASY Configuration:** -Probe: EX3DV4 - SN3679; ConvF(6.82, 6.82, 6.82); Calibrated: 2013/07/22;  
 -Sensor-Surface: 2mm (Mechanical Surface Detection), z = 1.0, 31.0, 161.0 -Electronics: DAE4 Sn626; Calibrated: 2013/09/17  
 -Phantom: ELI v4.0; Type: QDOVA001BA; Serial: 1059; Phantom section: Flat Section  
 -DASY52 52.8.2(969); SEMCAD X 14.6.6(6824)

**portable,wm224(e917)+dc1\_pc2138(32)/m8;pos:left&touch(d0mm),11b(1m),m2462/**

**Area Scan:72x108,12 (7x10x1):** Measurement grid: dx=12mm, dy=12mm; Maximum value of SAR (measured) = 0.568 W/kg

**Area Scan:72x108,12 (61x91x1):** Interpolated grid: dx=1.200 mm, dy=1.200 mm; Maximum value of SAR (interpolated) = 0.933 W/kg

**Z Scan;160,5 (1x1x33):** Measurement grid: dx=20mm, dy=20mm, dz=5mm; Maximum value of SAR (measured) = 1.04 W/kg

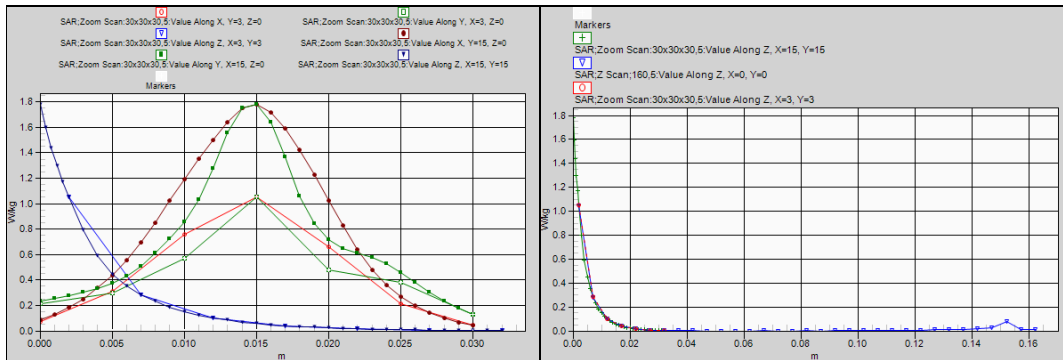
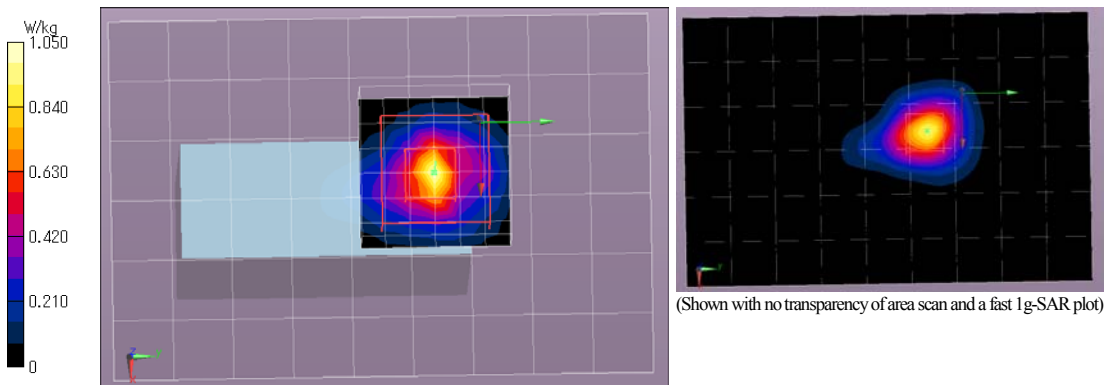
**Fast SAR(\*.Polynomial fit): SAR(1 g) = 0.477 mW/g;**

**Zoom Scan:30x30x30,5 (7x7x7)/Cube 0:** Measurement grid: dx=5mm, dy=5mm, dz=5mm;

Reference Value = 23.806 V/m; Power Drift = -0.20 dB, Maximum value of SAR (measured) = 1.05 W/kg

**Peak SAR (extrapolated) = 1.779 mW/g (Must evaluate all default other channels.)**

**SAR(1 g) = 0.456 mW/g; SAR(10 g) = 0.153 mW/g**



Remarks: \* Date tested: 2013/10/24; Tested by: Hiroshi Naka; Tested place: No.7 shielded room,  
 \* liquid depth: 154mm; Position: distance of EUT to phantom: 0mm (2mm to liquid); ambient: 23.5 ± 1.0deg.C. / 45 ± 10 %RH,  
 \* liquid temperature: 22.3(start)/22.3(end)/22.6(in check) deg.C.; \*.White cubic: zoom scan area, Red cubic: big=SAR(10g )small=SAR(1g)



**Appendix 2-2: SAR measurement data / Platform (1) (cont'd)**  
**Step 1: Change the setup positions (cont'd)**

**Plot 1-8: 11b(1Mbps), 2437MHz (6ch.) / Left & touch (separation distance=0mm)**

**EUT: Wireless module/(in Digital camera); Type: WM224/(camera:PC2138); Serial: E917/(32)**

**Communication System: IEEE 802.11b(1Mbps, DBPSK/DSSS);**

**Frequency: 2437 MHz; Crest Factor: 1.0** (\*.Frame Length in ms: 0; Communication System PAR: 0 dB; PMF: 1)

**Medium: M2450; Medium parameters used: f = 2437 MHz;  $\sigma = 1.955$  S/m;  $\epsilon_r = 51.24$ ;  $\rho = 1000$  kg/m<sup>3</sup>**

Measurement Standard: DASY5 (IEEE/IEC/ANSI C63.19-2007)

**DASY Configuration:** -Probe: EX3DV4 - SN3679; ConvF(6.82, 6.82, 6.82); Calibrated: 2013/07/22;  
 -Sensor-Surface: 2mm (Mechanical Surface Detection), z = 1.0, 31.0, 161.0 -Electronics: DAE4 Sn626; Calibrated: 2013/09/17  
 -Phantom: ELI v4.0; Type: QDOVA001BA; Serial: 1059; Phantom section: Flat Section  
 -DASY52 52.8.2(969); SEMCAD X 14.6.6(6824)

**portable,wm224(e917)+dc1\_pc2138(32)/m9;ch:left&touch(d0mm),11b(1m),m2437/**

**Area Scan:72x72,12 (7x7x1):** Measurement grid: dx=12mm, dy=12mm; Maximum value of SAR (measured) = 0.432 W/kg

**Area Scan:72x72,12 (61x61x1):** Interpolated grid: dx=1.200 mm, dy=1.200 mm; Maximum value of SAR (interpolated) = 0.580 W/kg

**Z Scan;160,5 (1x1x33):** Measurement grid: dx=20mm, dy=20mm, dz=5mm; Maximum value of SAR (measured) = 0.813 W/kg

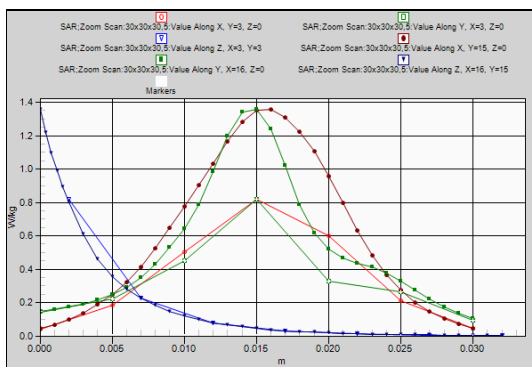
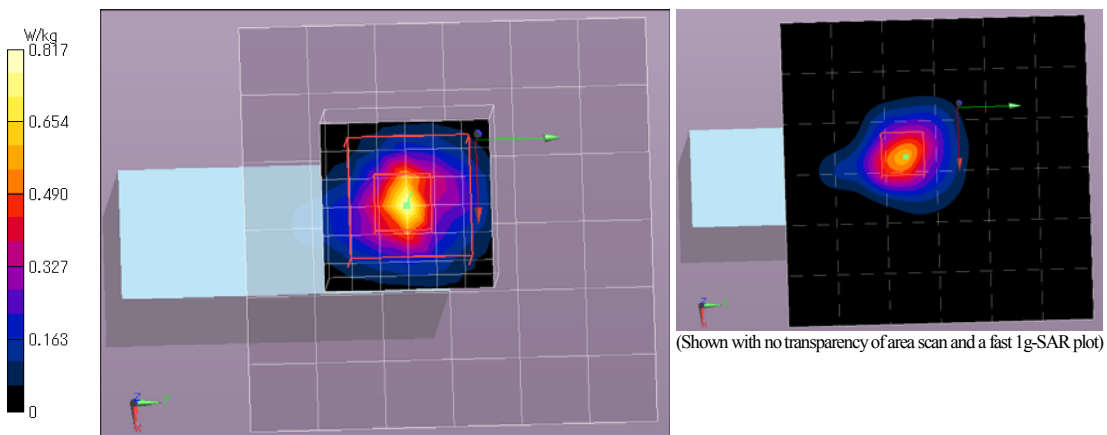
**Fast SAR(\*.Polynomial fit): SAR(1 g) = 0.351 mW/g;**

**Zoom Scan:30x30x30,5 (7x7x7)/Cube 0:** Measurement grid: dx=5mm, dy=5mm, dz=5mm;

Reference Value = 20.810 V/m; Power Drift = -0.07 dB, Maximum value of SAR (measured) = 0.817 W/kg

Peak SAR (extrapolated) = 1.356 mW/g

**SAR(1 g) = 0.351 mW/g; SAR(10 g) = 0.114 mW/g**



Remarks: \*. Date tested: 2013/10/24; Tested by: Hiroshi Naka; Tested place: No.7 shielded room,  
 \*. liquid depth: 154mm; Position: distance of EUT to phantom: 0mm (2mm to liquid); ambient: 23.5 ± 1.0deg.C. / 45 ± 10 %RH,  
 \*. liquid temperature: 22.3(start)/22.3(end)/22.6(in check) deg.C.; \*. White cubic: zoom scan area, Red cubic: big=SAR(10g) / small=SAR(1g)

**Appendix 2-2: SAR measurement data / Platform (1) (cont'd)**  
**Step 1: Change the setup positions (cont'd)**

**Plot 1-9: 11b(1Mbps), 2412MHz (1ch.) / Left & touch (separation distance=0mm)**

**EUT: Wireless module/(in Digital camera); Type: WM224/(camera:PC2138); Serial: E917/(32)**

**Communication System: IEEE 802.11b(1Mbps, DBPSK/DSSS);**

**Frequency: 2412 MHz; Crest Factor: 1.0** (\*Frame Length in ms: 0; Communication System PAR: 0 dB; PMF: 1)

**Medium: M2450; Medium parameters used: f = 2412 MHz;  $\sigma = 1.913$  S/m;  $\epsilon_r = 51.36$ ;  $\rho = 1000$  kg/m<sup>3</sup>**

Measurement Standard: DASYS5 (IEEE/IEC/ANSI C63.19-2007)

**DASY Configuration:** -Probe: EX3DV4 - SN3679; ConvF(6.82, 6.82, 6.82); Calibrated: 2013/07/22;  
 -Sensor-Surface: 2mm (Mechanical Surface Detection), z = 1.0, 31.0, 161.0 -Electronics: DAE4 Sn626; Calibrated: 2013/09/17  
 -Phantom: ELI v4.0; Type: QDOVA001BA; Serial: 1059; Phantom section: Flat Section  
 -DASY52 52.8.2(969); SEMCAD X 14.6.6(6824)

**portable,wm224(e917)+dc1\_pc2138(32)/m10;ch:left&touch(d0mm),11b(1m),m2412/**

**Area Scan:72x72,12 (7x7x1):** Measurement grid: dx=12mm, dy=12mm; Maximum value of SAR (measured) = 0.428 W/kg

**Area Scan:72x72,12 (61x61x1):** Interpolated grid: dx=1.200 mm, dy=1.200 mm; Maximum value of SAR (interpolated) = 0.521 W/kg

**Z Scan;160,5 (1x1x33):** Measurement grid: dx=20mm, dy=20mm, dz=5mm; Maximum value of SAR (measured) = 0.760 W/kg

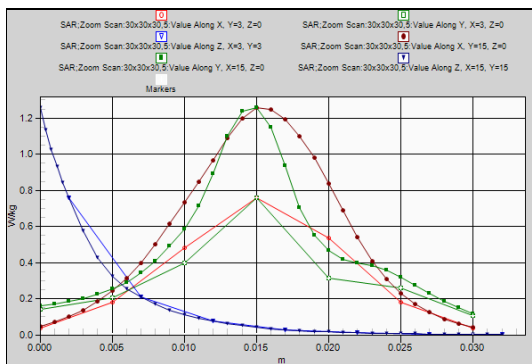
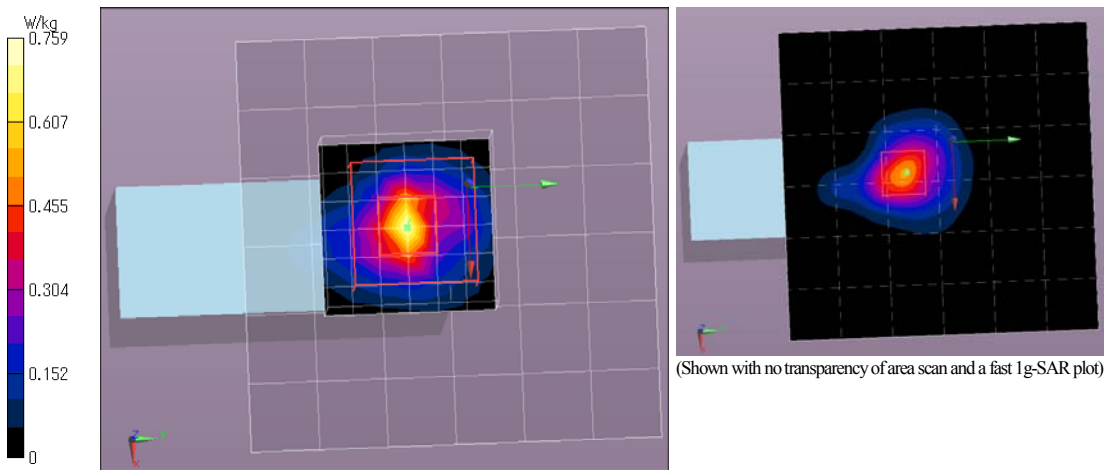
**Fast SAR(\*.Polynomial fit): SAR(1 g) = 0.313 mW/g;**

**Zoom Scan:30x30x30,5 (7x7x7)/Cube 0:** Measurement grid: dx=5mm, dy=5mm, dz=5mm;

Reference Value = 20.339 V/m; Power Drift = -0.06 dB, Maximum value of SAR (measured) = 0.759 W/kg

Peak SAR (extrapolated) = 1.257 mW/g

**SAR(1 g) = 0.321 mW/g; SAR(10 g) = 0.106 mW/g**



Remarks: \* Date tested: 2013/10/24; Tested by: Hiroshi Naka; Tested place: No.7 shielded room,  
 \* liquid depth: 154mm; Position: distance of EUT to phantom: 0mm (2mm to liquid); ambient: 23.5 ± 1.0deg.C. / 45 ± 10 %RH,  
 \* liquid temperature: 22.3(start)/22.3(end)/22.6(in check) deg.C.; \* White cubic: zoom scan area, Red cubic: big=SAR(10g)/small=SAR(1g)

**Appendix 2-2: SAR measurement data / Platform (1) (cont'd)**

**Step 2: Change the operation mode**

**Plot 2-1: 11n(40HT)(MCS0), 2452MHz (9ch.) / Left & touch (separation distance=0mm)**

**EUT: Wireless module/(in Digital camera); Type: WM224/(camera:PC2138); Serial: E917/(32)**

**Communication System: IEEE 802.11n(40HT)(MCS0, BPSK/OFDM);**

**Frequency: 2452 MHz; Crest Factor: 1.0** (\*Frame Length in ms: 0; Communication System PAR: 0 dB; PMF: 1)

**Medium: M2450; Medium parameters used: f = 2452 MHz;  $\sigma = 1.966$  S/m;  $\epsilon_r = 51.21$ ;  $\rho = 1000$  kg/m<sup>3</sup>**

Measurement Standard: DASY5 (IEEE/IEC/ANSI C63.19-2007)

**DASY Configuration:** -Probe: EX3DV4 - SN3679; ConvF(6.82, 6.82, 6.82); Calibrated: 2013/07/22;  
 -Sensor-Surface: 2mm (Mechanical Surface Detection), z = 1.0, 31.0, 161.0 -Electronics: DAE4 Sn626; Calibrated: 2013/09/17  
 -Phantom: ELI v4.0; Type: QDOVA001BA; Serial: 1059; Phantom section: Flat Section  
 -DASY52 52.8.2(969); SEMCAD X 14.6.6(6824)

**portable,wm224(e917)+dc1\_pc2138(32)/m1;mode;left&touch(d0mm),n40(mcs0),m2452/**

**Area Scan:72x72,12 (7x7x1):** Measurement grid: dx=12mm, dy=12mm; Maximum value of SAR (measured) = 0.444 W/kg

**Area Scan:72x72,12 (61x61x1):** Interpolated grid: dx=1.200 mm, dy=1.200 mm; Maximum value of SAR (interpolated) = 0.516 W/kg

**Z Scan;160,5 (1x1x33):** Measurement grid: dx=20mm, dy=20mm, dz=5mm; Maximum value of SAR (measured) = 0.649 W/kg

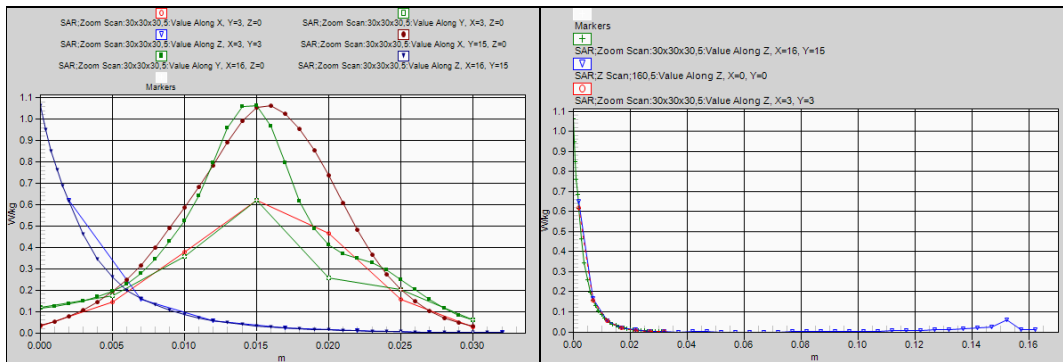
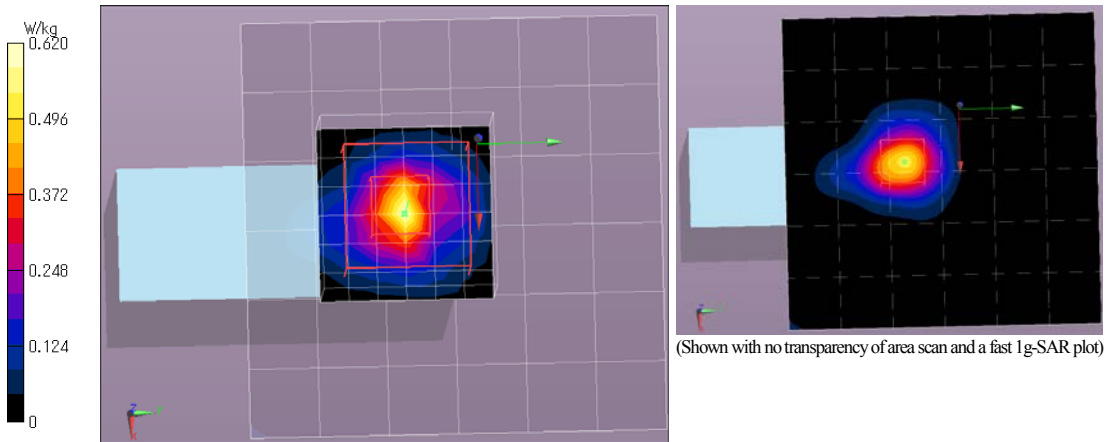
**Fast SAR(\*.Polynomial fit): SAR(1 g) = 0.310 mW/g;**

**Zoom Scan:30x30x30,5 (7x7x7)/Cube 0:** Measurement grid: dx=5mm, dy=5mm, dz=5mm;

Reference Value = 17.461 V/m; Power Drift = 0.20 dB, Maximum value of SAR (measured) = 0.620 W/kg

Peak SAR (extrapolated) = 1.062 mW/g

**SAR(1 g) = 0.271 mW/g; SAR(10 g) = 0.088 mW/g**



Remarks: \* Date tested: 2013/10/24; Tested by: Hiroshi Naka; Tested place: No.7 shielded room,  
 \* liquid depth: 154mm; Position: distance of EUT to phantom: 0mm (2mm to liquid); ambient: 23.5 ± 1.0deg.C. / 45 ± 10 %RH,  
 \* liquid temperature: 22.3(start)/22.3(end)/22.6(in check) deg.C.; \* White cubic: zoom scan area, Red cubic: big=SAR(10g )small=SAR(1g)

## APPENDIX 3: Test instruments

### Appendix 3-1: Equipment used

Control No.	Instrument	Manufacturer	Model No	Serial No	Test Item	Calibration Date * Interval(month)
COTS-SSAR-02	DASY52	Schmid&Partner Engineering AG	DASY52 V8.2 B969	-	SAR	-
COTS-SSEP-02	Dielectric assessment kit	Schmid&Partner Engineering AG	DAK	-	SAR	-
SSAR-02	SAR measurement system	Schmid&Partner Engineering AG	DASY5	1324	SAR	Pre Check
SSRBT-02	SAR robot	Schmid&Partner Engineering AG	TX60 Lspeag	F12/5L2QA1/A/01	SAR	2013/09/02 * 12
KDAE-01	Data Acquisition Electronics	Schmid&Partner Engineering AG	DAE4	626	SAR	2013/09/17 * 12
KPB-01	Dosimetric E-Field Probe	Schmid&Partner Engineering AG	EX3DV4	3679	SAR	2013/07/13 * 12
KSDA-01	Dipole Antenna	Schmid&Partner Engineering AG	D2450V2	822	SAR(daily)	2013/01/08 * 12
KPFL-01	Flat Phantom	Schmid&Partner Engineering AG	Oval flat phantom ELJ 4.0	1059	SAR	2012/10/31 * 12
SSNA-01	Network Analyzer	Agilent	8753ES	US39171777	SAR	2012/12/29 * 12
SEPP-02	Dielectric probe	Schmid&Partner Engineering AG	DAK3.5	1129	SAR	2013/08/24 * 12
KSG-08	Signal Generator	Rohde & Schwarz	SMT06	100763	SAR(daily)	2013/07/31 * 12
KPA-12	RF Power Amplifier	MILMEGA	AS2560-50	1018582	SAR(daily)	Pre Check
KCPL-07	Directional Coupler	Pulsar Microwave Corp.	COS30-B26	0621	SAR(daily)	Pre Check
KPM-06	Power Meter	Rohde & Schwarz	NRVD	101599	SAR(daily)	2013/09/03 * 12
KIU-08	Power sensor	Rohde & Schwarz	NRV-24	100372	SAR(daily)	2013/09/03 * 12
KIU-09	Power sensor	Rohde & Schwarz	NRV-24	100371	SAR(daily)	2013/09/03 * 12
KAT10-P1	Attenuator	Weinschel	24-10-34	BY5927	SAR(daily)	2013/02/27 * 12
KPM-05	Power meter	Agilent	E4417A	GB41290718	SAR(daily)	2013/04/18 * 12
KPSS-01	Power sensor	Agilent	E9327A	US40440544	SAR(daily)	2013/04/18 * 12
SAT20-SAR1	Attenuator	TME	SFA-01AXPJ-20	-	SAR(daily)	2013/04/05 * 12
KRU-01	Ruler(300mm)	Shinwa	13134	-	SAR	2013/03/25 * 12
KRU-05	Ruler(100x50mm,L)	Shinwa	12101	-	SAR	2013/05/27 * 12
KOS-13	Digital thermometer	HANNA	Checktemp-2	KOS-13	SAR	2013/01/31 * 12
KOS-14	Thermo-Hygrometer data logger	SATO KEIRYOKI	SK-L200THII α / SK-LTHII α -2	015246/08169	SAR	2013/01/31 * 12
SOS-SAR1	Digital thermometer	LKMelectonic	DTM3000	3171	SAR	2013/10/01 * 12
SOS-11	Humidity Indicator	A&D	AD-5681	4063424	SAR	2013/02/27 * 12
SOS-12	Digital thermometer	HANNA	Checktemp-4	SOS-12	SAR	2013/02/25 * 12
KPM-08	Power meter	Anritsu	ML2495A	6K00003356	Ant.pwr	2013/09/04 * 12
KPSS-04	Power sensor	Anritsu	MA2411B	012088	Ant.pwr	2013/09/04 * 12
KAT10-S3	Attenuator	Agilent	8490D 010	50924	Ant.pwr	2013/02/19 * 12
SSA-04	Spectrum Analyzer	Advantest	R3272	101100994	SAR(moni.)	2012/12/17 * 12
KSDH-01	Device holder	Schmid&Partner Engineering AG	Mounting device for transmitter	-	SAR	2013/09/02 * 12
SWTR-03	DI water	MonotaRo	34557433	-	SAR	Pre Check
KSLM245-01	Tissue simulation liquid (2450MHz,body)	Schmid&Partner Engineering AG	SL AAM 245	-	SAR	(Daily check) Target value ±5%
No.7 Shielded room	SAR shielded room (2.76m(W)x3.76m(D)x2.4m(H))	TDK	-	-	SAR	(Daily check) Ambient noise: < 12mW/kg

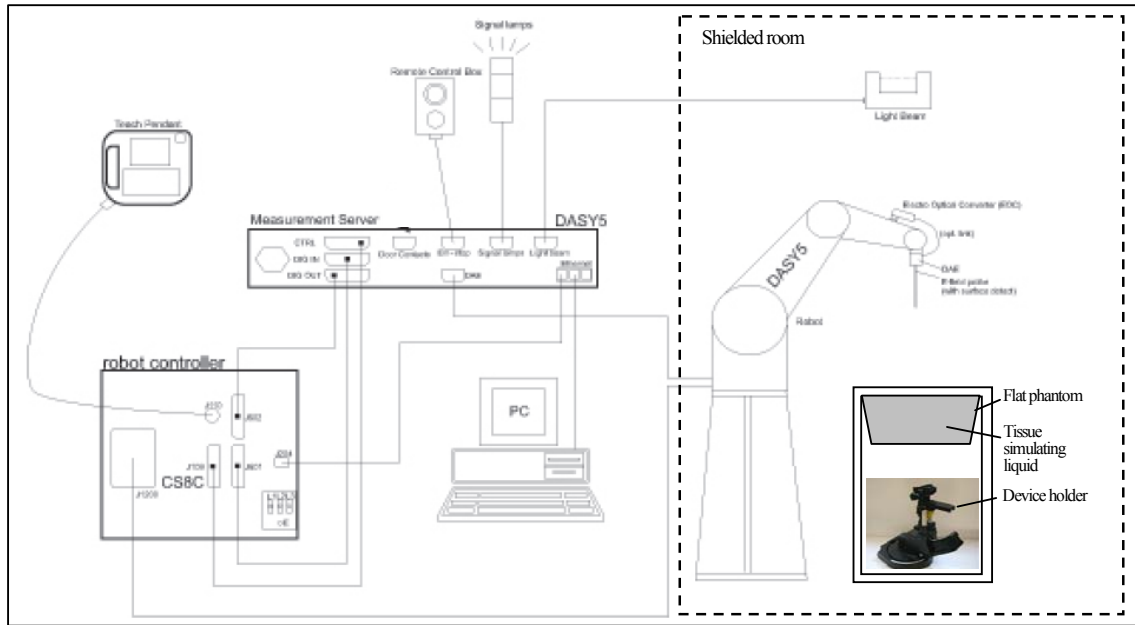
The expiration date of calibration is the end of the expired month.

As for some calibrations performed after the tested dates, those test equipment have been controlled by means of an unbroken chains of calibrations. All equipment is calibrated with valid calibrations. Each measurement data is traceable to the national or international standards.

[Test Item] SAR: Specific Absorption Rate, Ant.pwr: Antenna terminal conducted power

**Appendix 3-2: Configuration and peripherals**

These measurements were performed with the automated near-field scanning system DASY5 from Schmid & Partner Engineering AG (SPEAG). The system is based on a high precision robot, which positions the probes with a positional repeatability of better than  $\pm 0.02$  mm. Special E- and H-field probes have been developed for measurements close to material discontinuity, the sensors of which are directly loaded with a Schottky diode and connected via highly resistive lines to the data acquisition unit. The SAR measurements were conducted with the dosimetry probes EX3DV4 (manufactured by SPEAG), designed in the classical triangular configuration and optimized for dosimetric evaluation.



The DASY5 system for performing compliance tests consist of the following items:

1	A standard high precision 6-axis robot (Stäubli TX/RX family) with controller, teach pendant and software. An arm extension for accommodating the data acquisition electronics (DAE).
2	An isotropic field probe optimized and calibrated for the targeted measurement.
3	A data acquisition electronics (DAE) which performs the signal amplification, signal multiplexing, AD-conversion, offset measurements, mechanical surface detection, collision detection, etc. The unit is battery powered with standard or rechargeable batteries. The signal is optically transmitted to the EOC.
4	The Electro-optical converter (EOC) performs the conversion from optical to electrical signals for the digital communication to the DAE. To use optical surface detection, a special version of the EOC is required. The EOC signal is transmitted to the measurement server.
5	The function of the measurement server is to perform the time critical tasks such as signal filtering, control of the robot operation and fast movement interrupts.
6	The Light Beam used is for probe alignment. This improves the (absolute) accuracy of the probe positioning.
7	A computer running Win7 professional operating system and the DASY5 software.
8	R Remote control and teach pendant as well as additional circuitry for robot safety such as warning lamps, etc.
9	The phantom.
10	The device holder for EUT. (low-loss dielectric palette) (*. when it was used.)
11	Tissue simulating liquid mixed according to the given recipes.
12	Validation dipole kits allowing to validate the proper functioning of the system.



**Appendix 3-3: Test system specification**

**TX60 Lsepag robot/CS8Csepag-TX60 robot controller**

- Number of Axes : 6
- Repeatability : ±0.02mm
- Manufacture : Stäubli Unimation Corp.

**DASY5 Measurement server**

- Features : The DASY5 measurement server is based on a PC/104 CPU board with a 400MHz intel ULV Celeron, 128MB chip-disk and 128MB RAM. The necessary circuits for communication with the DAE4 electronics box, as well as the 16 bit AD converter system for optical detection and digital I/O interface are contained on the DASY5 I/O board, which is directly connected to the PC/104 bus of the CPU board.
- Calibration : No calibration required.
- Manufacture : Schmid & Partner Engineering AG

**Data Acquisition Electronic (DAE)**

- Features : Signal amplifier, multiplexer, A/D converter and control logic. Serial optical link for communication with DASY5 embedded system (fully remote controlled). 2 step probe touch detector for mechanical surface detection and emergency robot stop (not in -R version)
- Measurement Range : 1µV to > 200mV (16bit resolution and 2 range settings: 4mV, 400mV)
- Input Offset voltage : < 1µV (with auto zero)
- Input Resistance : 200MΩ
- Battery Power : > 10hr of operation (with two 9V battery)
- Manufacture : Schmid & Partner Engineering AG

**Electro-Optical Converter (EOC61)**

- Manufacture : Schmid & Partner Engineering AG

**Light Beam Switch (LB5/80)**

- Manufacture : Schmid & Partner Engineering AG

**SAR measurement software**

- Item : Dosimetric Assessment System DASY5
- Software version : DASY52, V8.2 B969
- Manufacture : Schmid & Partner Engineering AG

**E-Field Probe**

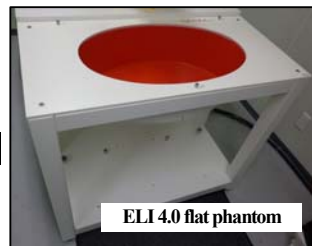
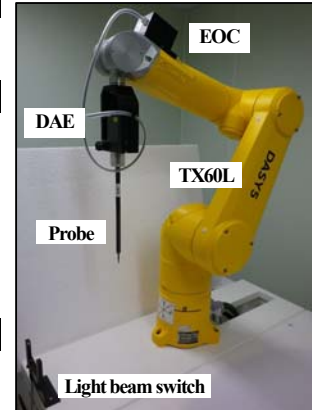
- Model : **EX3DV4 (serial number: 3679)**
- Construction : Symmetrical design with triangular core. Built-in shielding against static charges. PEEK enclosure material (resistant to organic solvents, e.g., DGBE).
- Frequency : 10MHz to 6GHz, Linearity: ±0.2 dB (30MHz to 6GHz)
- Conversion Factors : 2450, 5200, 5300, 5500, 5600, 5800MHz (Head and Body)
- Directivity : ±0.3 dB in HSL (rotation around probe axis)  
±0.5 dB in tissue material (rotation normal to probe axis)
- Dynamic Range : 10µW/g to > 100 mW/g; Linearity: ±0.2 dB (noise: typically < 1µW/g)
- Dimension : Overall length: 330mm (Tip: 20mm)  
Tip diameter: 2.5mm (Body: 12mm)  
Typical distance from probe tip to dipole centers: 1mm
- Application : High precision dosimetric measurement in any exposure scenario (e.g., very strong gradient fields). Only probe which enables compliance testing for frequencies up to 6GHz with precision of better 30%.
- Manufacture : Schmid & Partner Engineering AG

**Phantom**

- Type : **ELI 4.0 oval flat phantom**
- Shell Material : Fiberglass
- Shell Thickness : Bottom plate: 2 ±0.2mm
- Dimensions : Bottom elliptical: 600×400mm, Depth: 190mm (Volume: Approx. 30 liters)
- Manufacture : Schmid & Partner Engineering AG

**Device Holder**

- Urethane foam
- KSDH-01: In combination with the ELI4, the Mounting Device enables the rotation of the mounted transmitter device in spherical coordinates. Transmitter devices can be easily and accurately positioned. The low-loss dielectric urethane foam was used for the mounting section of device holder.
- Material : POM
- Manufacture : Schmid & Partner Engineering AG





**Appendix 3-4: Simulated tissue composition and parameter confirmation**

Liquid type used	<input checked="" type="checkbox"/> used / Body, MSL 2450
M/N / Control No.	SL.AAM 245 / KSLM245-01
Ingredient	Mixture (%)
Water	52-75 %
C8H18O3 (DGBE, Diethylene glycol monobutyl ether)	25-48%
NaCl	<1.0%
Manufacture	Schmid&Partner Engineering AG

\*. The dielectric parameters were checked prior to assessment using the DAK3.5 dielectric probe kit.

Dielectric parameter measurement results (Body tissue)															
Date	Frequency [MHz] (Liquid)	Ambient	Temperature Liquid [deg.C.]		Liquid Depth [mm]	Parameters		Target value		Measured	ASAR (1g) [%] (#3)	Deviation for #1 (Std.) [%]	Limit [%]	Deviation for #2 (Cal.) [%]	Limit [%] (#2)
			Before	After		Relative permittivity: $\epsilon_r$	Conductivity: $\sigma$	#1:Std. (#1)	#2:Cal. (#2)						
October 24, 2013	2450 (Body)	22.5deg.C. / 48%RH	22.6	22.6	(154)	$\epsilon_r$ [-]		52.7	50.5	51.21	(+0.60)	-2.8	±5	+1.4	±5
						$\sigma$ [S/m]		1.95	2.01	1.961		+0.6	±5	-2.4	±5

- \*1. The target value is a parameter defined in Appendix A of KDB865664 D01 (v01r01).
- \*2. The target value is a parameter defined in the calibration data sheet of D2450V2 (sn:822) dipole calibrated by Schmid & Partner Engineering AG (Certification No. D2450V2-822\_Jan13, the data sheet was filed in this report).
- \*3. The number of ASAR(1g) of body simulated tissue was reference purpose only. ASAR correction was only applied to head simulated tissue. The coefficients are parameters defined in Annex F, IEC 62209-2:2010.  
 $ASAR(1g) = C_{\epsilon r} \times \Delta \epsilon_r + C_{\sigma} \times \Delta \sigma$ ,  $C_{\epsilon r} = 7.854E-4 \times f^3 + 9.402E-3 \times f^2 - 2.742E-2 \times f + 0.2026$  /  $C_{\sigma} = 9.804E-3 \times f^3 - 8.661E-2 \times f^2 + 2.981E-2 \times f + 0.7829$

Decision on Simulated Tissues of 2450MHz; In the KDB865664, the dielectric parameters suggested for head and body tissue simulating liquid are given at 2000, 2450 and 3000MHz. As an intermediate solution, dielectric parameters for the frequencies between 2000-2450 and 2450-3000 were obtained using linear interpolation.

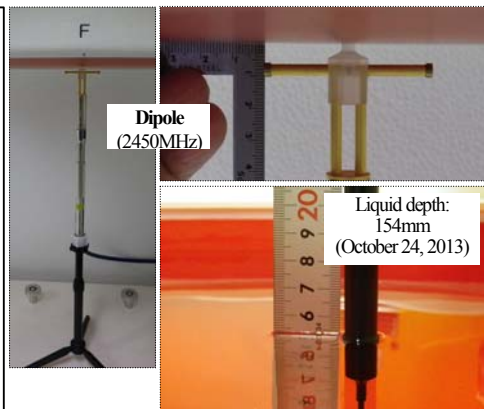
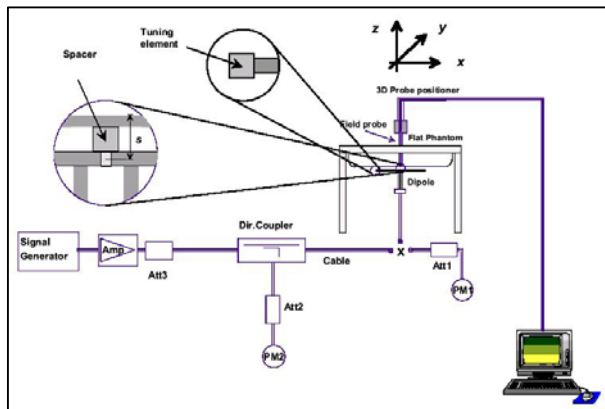
f (MHz)	Standard				Interpolated					
	Head Tissue		Body Tissue		f (MHz)	Head Tissue		Body Tissue		
	$\epsilon_r$	$\sigma$ [S/m]	$\epsilon_r$	$\sigma$ [S/m]		$\epsilon_r$	$\sigma$ [S/m]	$\epsilon_r$	$\sigma$ [S/m]	
(1800-2000)	40.0	1.40	53.3	1.52	2412	39.27	1.766	52.75	1.914	
2450	39.2	1.80	52.7	1.95	2437	39.22	1.788	52.72	1.938	
3000	38.5	2.40	52.0	2.73	2452	39.20	1.802	52.70	1.953	
					2462	39.18	1.813	52.68	1.967	

**Appendix 3-5: Daily check results**

Prior to the SAR assessment of EUT, the system validation kit was used to test whether the system was operating within its specifications of ±10%. The Daily check results are in the table below. (\*. Refer to Appendix 3-6 of measurement data.)

Daily check results														
Date	Freq. [MHz]	Liquid Type	Ambient	Liquid Temp. [deg.C.]			Liquid Depth [mm]	Dielectric parameter		Power drift [dB]	Daily check target & measured			
				Check	Before	After		$\epsilon_r$ [-]	$\sigma$ [S/m]		SAR 1g [W/kg]		Deviation [%]	Limit [%]
											Target	Measured		
October 24, 2013	2450	Body	23.2 deg.C / 47%RH	22.6	22.6	22.5	154	51.21	1.961	0	n/a (*4)	50.4 (1W scaled)	-	-
											12.8 (*5)	(12.6 (250mW) > ASAR-corrected: n/a)	-1.6	±10

- \*. n/a: not applicable, not applied.
- \*4. The target value (normalized to 1W) is defined in IEEE Std.1528.
- \*5. The target value (250mW input power) is a parameter defined in the calibration data sheet of D2450V2 (sn:822) dipole calibrated by Schmid & Partner Engineering AG (Certification No. D2450V2-822\_Jan13, the data sheet was filed in this report).
- \*. We performed the Daily check based on FCC requirement, "The 1g or 10g SAR values measured using the required tissue dielectric parameters should be within 10% of manufacturer calibrated dipole SAR values. However these manufacturer calibrated dipole target SAR values should be substantially similar to those defined in IEEE Std.1528." and FCC permits "SAR system verification with the actual liquid used for EUT's SAR measurement, should be the default operating procedures." We confirmed the this dipole manufacture's validation data for head is within 5% against IEEE Std.1528 (manufacture's cal.: 52.5W/kg (+0.2%, vs. standard=52.4W/kg). so we can only use Body liquid validation data for our Daily check procedure



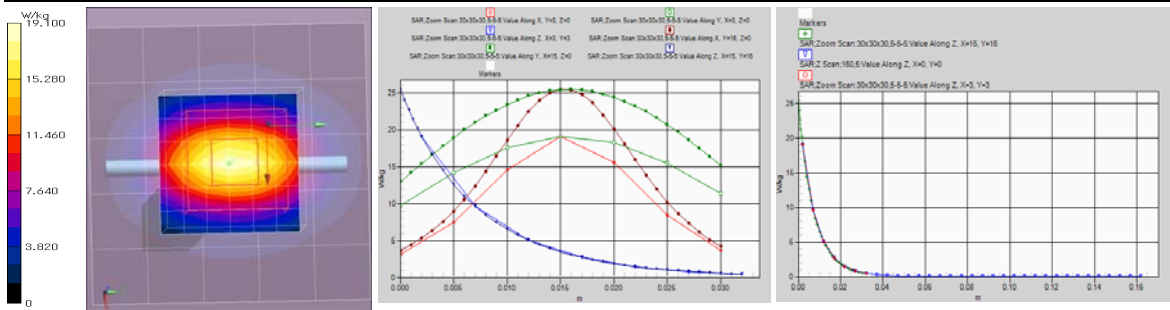
Test setup for the system performance check

**Appendix 3-6: Daily check measurement data**

**EUT: Dipole(2.45GHz); Type: D2450V2; Serial: 822; Forward conducted power: 250mW**  
**Communication System: CW; Frequency: 2450 MHz; Crest Factor: 1.0** (\* Frame Length in ms: 0; Communication System PAR: 0 dB; PMF: 1)  
**Medium: M2450; Medium parameters used: f = 2450 MHz;  $\sigma = 1.961$  S/m;  $\epsilon_r = 51.209$ ;  $\rho = 1000$  kg/m<sup>3</sup>**  
Measurement Standard: DASY5 (IEEE/IEC/ANSI C63.19-2007)

**DASY Configuration:** -Probe: EX3DV4 - SN3679; ConvF(6.82, 6.82, 6.82); Calibrated: 2013/07/22; -DASY52 52.8.2(969); SEMCAD X 14.6.6(6824)  
-Sensor-Surface: 2mm (Mechanical Surface Detection), z = 1.0, 31.0, 161.0 -Electronics: DAE4 Sn626; Calibrated: 2013/09/17  
-Phantom: ELI v4.0; Type: QDOVA001BA; Serial: 1059; Phantom section: Flat Section

**Area Scan:60x60,12 (6x6x1):** Measurement grid: dx=12mm, dy=12mm; Maximum value of SAR (measured) = 13.3 W/kg  
**Area Scan:60x60,12 (51x51x1):** Interpolated grid: dx=1.200 mm, dy=1.200 mm; Maximum value of SAR (interpolated) = 20.9 W/kg  
**Z Scan:160,5 (1x1x33):** Measurement grid: dx=20mm, dy=20mm, dz=5mm; Maximum value of SAR (measured) = 19.2 W/kg  
**Fast SAR(\*.Polynomial fit): SAR(1 g) = 13.2 mW/g(+4.8%,vs. zoom scan); SAR(10 g) = 5.87 mW/g(+0.2%, vs. zoom scan);**  
**Zoom Scan:30x30x30,5-5-5 (7x7x7)/Cube 0:** Measurement grid: dx=5mm, dy=5mm, dz=5mm;  
Reference Value = 100.4 W/in; Power Drift = -0.00 dB, Maximum value of SAR (measured) = 19.1 W/kg  
**Peak SAR (extrapolated) = 25.460 mW/g (-2.1%, vs. std.-IEC62209-2=26.0 W/kg)**  
**SAR(1 g) = 12.6 mW/g (-1.6%, vs.speag-cal=12.8 W/kg); SAR(10 g) = 5.86 mW/g**



Remarks: \* Date tested: 2013/10/24, Tested by: Hiroshi Naka; Tested place: No.7 shielded room,  
\* liquid depth: 154mm; Position: distance of dipole to phantom: 8mm (10mm to liquid); ambient: 22.3 deg.C. / 49%RH,  
\* liquid temperature: 22.5(start)/22.4(end)/22.6(in check) deg.C.; \* White cubic: zoom scan area, Red cubic: big=SAR(10g )small=SAR(1g)

**Appendix 3-7: Daily check uncertainty**

Uncertainty of system daily check (~6GHz) (Body liquid, 2.4-6GHz, $\epsilon_r, \sigma \leq 5\%$ , DAK3.5) (v07)							1g SAR	10g SAR
Combined measurement uncertainty of the measurement system (k=1)							± 12.7 %	± 12.4 %
Expanded uncertainty (k=2)							± 25.4 %	± 24.8 %
Error Description (v07)	Uncertainty Value	Probability distribution	Divisor	ci (1g)	ci (10g)	ui (1g)	ui (10g)	V <sub>i</sub> , v <sub>eff</sub>
<b>A Measurement System (DASY5)</b>							(std. uncertainty)	(std. uncertainty)
1 Probe Calibration Error (2.45,5.2,5.3,5.5,5.6,5.8GHz±100MHz)	±6.55 %	Normal	1	1	1	±6.55 %	±6.55 %	∞
2 Axial isotropy	±4.7 %	Rectangular	√3	0.7	0.7	±1.9 %	±1.9 %	∞
3 Hemispherical isotropy (*flat phantom, <5°)	±9.6 %	Rectangular	√3	0.7	0.7	±3.9 %	±3.9 %	∞
4 Boundary effects	±4.8 %	Rectangular	√3	1	1	±2.8 %	±2.8 %	∞
5 Probe linearity	±4.7 %	Rectangular	√3	1	1	±2.7 %	±2.7 %	∞
6 Probe modulation response (CW)	±0.0 %	Rectangular	√3	1	1	±0.0 %	±0.0 %	∞
7 System detection limit	±1.0 %	Rectangular	√3	1	1	±0.6 %	±0.6 %	∞
8 Response Time Error (<5ms/100ms wait)	±0.0 %	Rectangular	√3	1	1	±0.0 %	±0.0 %	∞
9 Integration Time Error (CW)	±0.0 %	Rectangular	√3	1	1	±0.0 %	±0.0 %	∞
10 System readout electronics (DAE)	±0.3 %	Normal	1	1	1	±0.3 %	±0.3 %	∞
11 RF ambient conditions-noise	±3.0 %	Rectangular	√3	1	1	±1.7 %	±1.7 %	∞
12 RF ambient conditions-reflections	±3.0 %	Rectangular	√3	1	1	±1.7 %	±1.7 %	∞
13 Probe positioner mechanical tolerance	±3.3 %	Rectangular	√3	1	1	±1.9 %	±1.9 %	∞
14 Probe positioning with respect to phantom shell	±6.7 %	Rectangular	√3	1	1	±3.9 %	±3.9 %	∞
15 Max.SAR evaluation	±4.0 %	Rectangular	√3	1	1	±2.3 %	±2.3 %	∞
<b>B Test Sample Related</b>								
16 Deviation of the experimental source	±5.5 %	Normal	1	1	1	±5.5 %	±5.5 %	∞
17 Dipole to liquid distance (10mm±0.2mm, <2deg.)	±2.0 %	Rectangular	√3	1	1	±1.2 %	±1.2 %	∞
18 Drift of output power (measured, <0.2dB)	±2.5 %	Rectangular	√3	1	1	±1.4 %	±1.4 %	∞
<b>C Phantom and Setup</b>								
19 Phantom uncertainty	±2.0 %	Rectangular	√3	1	1	±1.2 %	±1.2 %	∞
20 Liquid conductivity (target) (<5%)	±5.0 %	Rectangular	√3	0.64	0.43	±1.8 %	±1.2 %	∞
21 Liquid conductivity (meas.) (DAK3.5)	±3.1 %	Normal	1	0.64	0.43	±2.0 %	±1.3 %	∞
22 Liquid permittivity (target) (<5%)	±5.0 %	Rectangular	√3	0.6	0.49	±1.7 %	±1.4 %	∞
23 Liquid permittivity (meas.) (DAK3.5)	±2.9 %	Normal	1	0.6	0.49	±1.7 %	±1.4 %	∞
24 Liquid Conductivity-temp.uncertainty (<2deg.C.)	±5.2 %	Rectangular	√3	0.78	0.71	±2.3 %	±2.1 %	∞
25 Liquid Permittivity-temp.uncertainty (<2deg.C.)	±0.8 %	Rectangular	√3	0.23	0.26	±0.1 %	±0.1 %	∞
<b>Combined Standard Uncertainty</b>							±12.7 %	±12.4 %
<b>Expanded Uncertainty (k=2)</b>							±25.4 %	±24.8 %

\* This measurement uncertainty budget is suggested by IEEE 1528, IEC 62209-2 and determined by Schmid & Partner Engineering AG (DASY5 Uncertainty Budget).

**Appendix 3-8: Calibration certificate: E-Field Probe (EX3DV4)**

**Calibration Laboratory of  
Schmid & Partner  
Engineering AG**  
Zeughausstrasse 43, 8004 Zurich, Switzerland



**S** Schweizerischer Kalibrierdienst  
**C** Service suisse d'étalonnage  
**S** Servizio svizzero di taratura  
**S** Swiss Calibration Service

Accredited by the Swiss Accreditation Service (SAS)  
The Swiss Accreditation Service is one of the signatories to the EA  
Multilateral Agreement for the recognition of calibration certificates

Accreditation No.: **SCS 108**

Client **UL Japan (PTT)**

Certificate No: **EX3-3679\_Jul13**

**CALIBRATION CERTIFICATE**

Object: **EX3DV4 - SN:3679**

Calibration procedure(s): **QA CAL-01.v8, QA CAL-14.v3, QA CAL-23.v4, QA CAL-25.v4  
Calibration procedure for dosimetric E-field probes**

Calibration date: **July 22, 2013**

This calibration certificate documents the traceability to national standards, which realize the physical units of measurements (SI).  
The measurements and the uncertainties with confidence probability are given on the following pages and are part of the certificate.

All calibrations have been conducted in the closed laboratory facility: environment temperature (22 ± 3)°C and humidity < 70%.

Calibration Equipment used (M&E critical for calibration)

Primary Standards	ID	Cal Date (Certificate No.)	Scheduled Calibration
Power meter E4419B	GB41293874	04-Apr-13 (No. 217-01733)	Apr-14
Power sensor E4412A	MY41498087	04-Apr-13 (No. 217-01733)	Apr-14
Reference 3 dB Attenuator	SN: S5054 (3c)	04-Apr-13 (No. 217-01737)	Apr-14
Reference 20 dB Attenuator	SN: S5277 (20x)	04-Apr-13 (No. 217-01735)	Apr-14
Reference 30 dB Attenuator	SN: S5129 (30b)	04-Apr-13 (No. 217-01738)	Apr-14
Reference Probe ES3DV2	SN: 3013	28-Dec-12 (No. ES3-3013_Dec12)	Dec-13
DAE4	SN: 860	31-Jan-13 (No. DAE4-860_Jan13)	Jan-14
Secondary Standards	ID	Check Date (in house)	Scheduled Check
RF generator HP 8648C	US3642U01700	4-Aug-99 (in house check Apr-13)	In house check: Apr-15
Network Analyzer HP 8753E	US37390585	18-Oct-01 (in house check Oct-12)	In house check: Oct-13

	Name	Function	Signature
Calibrated by:	Israe El-Nabouq	Laboratory Technician	<i>Israe El-Nabouq</i>
Approved by:	Katja Pokovic	Technical Manager	<i>Katja Pokovic</i>

Issued: July 23, 2013

This calibration certificate shall not be reproduced except in full without written approval of the laboratory.

Appendix 3-8: Calibration certificate: E-Field Probe (EX3DV4) (cont'd)

Calibration Laboratory of  
Schmid & Partner  
Engineering AG  
Zeughausstrasse 43, 8004 Zurich, Switzerland



S Schweizerischer Kalibrierdienst  
C Service suisse d'étalonnage  
S Servizio svizzero di taratura  
S Swiss Calibration Service

Accredited by the Swiss Accreditation Service (SAS)  
The Swiss Accreditation Service is one of the signatories to the EA  
Multilateral Agreement for the recognition of calibration certificates

Accreditation No.: SCS 108

**Glossary:**

TSL	tissue simulating liquid
NORM <sub>x,y,z</sub>	sensitivity in free space
ConvF	sensitivity in TSL / NORM <sub>x,y,z</sub>
DCP	diode compression point
CF	crest factor (1/duty_cycle) of the RF signal
A, B, C, D	modulation dependent linearization parameters
Polarization $\varphi$	$\varphi$ rotation around probe axis
Polarization $\vartheta$	$\vartheta$ rotation around an axis that is in the plane normal to probe axis (at measurement center), i.e., $\vartheta = 0$ is normal to probe axis

**Calibration is Performed According to the Following Standards:**

- IEEE Std 1528-2003, "IEEE Recommended Practice for Determining the Peak Spatial-Averaged Specific Absorption Rate (SAR) in the Human Head from Wireless Communications Devices: Measurement Techniques", December 2003
- IEC 62209-1, "Procedure to measure the Specific Absorption Rate (SAR) for hand-held devices used in close proximity to the ear (frequency range of 300 MHz to 3 GHz)", February 2005

**Methods Applied and Interpretation of Parameters:**

- NORM<sub>x,y,z</sub>:** Assessed for E-field polarization  $\vartheta = 0$  ( $f \leq 900$  MHz in TEM-cell;  $f > 1800$  MHz: R22 waveguide). NORM<sub>x,y,z</sub> are only intermediate values, i.e., the uncertainties of NORM<sub>x,y,z</sub> does not affect the E<sup>2</sup>-field uncertainty inside TSL (see below ConvF).
- NORM(f)<sub>x,y,z</sub> = NORM<sub>x,y,z</sub> \* frequency\_response** (see Frequency Response Chart). This linearization is implemented in DASY4 software versions later than 4.2. The uncertainty of the frequency response is included in the stated uncertainty of ConvF.
- DCP<sub>x,y,z</sub>:** DCP are numerical linearization parameters assessed based on the data of power sweep with CW signal (no uncertainty required). DCP does not depend on frequency nor media.
- PAR:** PAR is the Peak to Average Ratio that is not calibrated but determined based on the signal characteristics
- A<sub>x,y,z</sub>; B<sub>x,y,z</sub>; C<sub>x,y,z</sub>; D<sub>x,y,z</sub>; VR<sub>x,y,z</sub>:** A, B, C, D are numerical linearization parameters assessed based on the data of power sweep for specific modulation signal. The parameters do not depend on frequency nor media. VR is the maximum calibration range expressed in RMS voltage across the diode.
- ConvF and Boundary Effect Parameters:** Assessed in flat phantom using E-field (or Temperature Transfer Standard for  $f \leq 800$  MHz) and inside waveguide using analytical field distributions based on power measurements for  $f > 800$  MHz. The same setups are used for assessment of the parameters applied for boundary compensation (alpha, depth) of which typical uncertainty values are given. These parameters are used in DASY4 software to improve probe accuracy close to the boundary. The sensitivity in TSL corresponds to NORM<sub>x,y,z</sub> \* ConvF whereby the uncertainty corresponds to that given for ConvF. A frequency dependent ConvF is used in DASY version 4.4 and higher which allows extending the validity from  $\pm 50$  MHz to  $\pm 100$  MHz.
- Spherical isotropy (3D deviation from isotropy):** in a field of low gradients realized using a flat phantom exposed by a patch antenna.
- Sensor Offset:** The sensor offset corresponds to the offset of virtual measurement center from the probe tip (on probe axis). No tolerance required.

Appendix 3-8: Calibration certificate: E-Field Probe (EX3DV4) (cont'd)

EX3DV4 – SN:3679

July 22, 2013

# Probe EX3DV4

## SN:3679

Manufactured: September 9, 2008  
Calibrated: July 22, 2013

Calibrated for DASY/EASY Systems  
(Note: non-compatible with DASY2 system!)

**Appendix 3-8: Calibration certificate: E-Field Probe (EX3DV4) (cont'd)**

EX3DV4- SN:3679

July 22, 2013

**DASY/EASY - Parameters of Probe: EX3DV4 - SN:3679**

**Basic Calibration Parameters**

	Sensor X	Sensor Y	Sensor Z	Unc (k=2)
Norm ( $\mu\text{V}/(\text{V/m})^2$ ) <sup>A</sup>	0.58	0.54	0.53	± 10.1 %
DCP (mV) <sup>B</sup>	96.0	99.1	102.2	

**Modulation Calibration Parameters**

UID	Communication System Name		A dB	B dB $\sqrt{\mu\text{V}}$	C	D dB	VR mV	Unc <sup>C</sup> (k=2)
0	CW	X	0.0	0.0	1.0	0.00	185.2	±2.7 %
		Y	0.0	0.0	1.0		163.9	
		Z	0.0	0.0	1.0		173.5	

The reported uncertainty of measurement is stated as the standard uncertainty of measurement multiplied by the coverage factor k=2, which for a normal distribution corresponds to a coverage probability of approximately 95%.

<sup>A</sup> The uncertainties of NormX,Y,Z do not affect the E<sup>2</sup>-field uncertainty inside TSL (see Pages 5 and 6).

<sup>B</sup> Numerical linearization parameter: uncertainty not required.

<sup>C</sup> Uncertainty is determined using the max. deviation from linear response applying rectangular distribution and is expressed for the square of the field value.



**Appendix 3-8: Calibration certificate: E-Field Probe (EX3DV4) (cont'd)**

EX3DV4- SN:3679

July 22, 2013

**DASY/EASY - Parameters of Probe: EX3DV4 - SN:3679**

**Calibration Parameter Determined in Head Tissue Simulating Media**

f (MHz) <sup>C</sup>	Relative Permittivity <sup>F</sup>	Conductivity (S/m) <sup>F</sup>	ConvF X	ConvF Y	ConvF Z	Alpha	Depth (mm)	Unct. (k=2)
2450	39.2	1.80	6.81	6.81	6.81	0.57	0.67	± 12.0 %
5200	36.0	4.66	4.86	4.86	4.86	0.35	1.80	± 13.1 %
5300	35.9	4.76	4.81	4.81	4.81	0.30	1.80	± 13.1 %
5500	35.6	4.96	4.66	4.66	4.66	0.30	1.80	± 13.1 %
5600	35.5	5.07	4.40	4.40	4.40	0.35	1.80	± 13.1 %
5800	35.3	5.27	4.49	4.49	4.49	0.35	1.80	± 13.1 %

<sup>C</sup> Frequency validity of ± 100 MHz only applies for DASY v4.4 and higher (see Page 2), else it is restricted to ± 50 MHz. The uncertainty is the RSS of the ConvF uncertainty at calibration frequency and the uncertainty for the indicated frequency band.

<sup>F</sup> At frequencies below 3 GHz, the validity of tissue parameters ( $\epsilon$  and  $\sigma$ ) can be relaxed to ± 10% if liquid compensation formula is applied to measured SAR values. At frequencies above 3 GHz, the validity of tissue parameters ( $\epsilon$  and  $\sigma$ ) is restricted to ± 5%. The uncertainty is the RSS of the ConvF uncertainty for indicated target tissue parameters.

**Appendix 3-8: Calibration certificate: E-Field Probe (EX3DV4) (cont'd)**

EX3DV4-- SN:3679

July 22, 2013

**DASY/EASY - Parameters of Probe: EX3DV4 - SN:3679**

**Calibration Parameter Determined in Body Tissue Simulating Media**

f (MHz) <sup>C</sup>	Relative Permittivity <sup>F</sup>	Conductivity (S/m) <sup>F</sup>	ConvF X	ConvF Y	ConvF Z	Alpha	Depth (mm)	Unct. (k=2)
2450	52.7	1.95	6.82	6.82	6.82	0.72	0.62	± 12.0 %
5200	49.0	5.30	4.30	4.30	4.30	0.40	1.90	± 13.1 %
5300	48.9	5.42	4.16	4.16	4.16	0.40	1.90	± 13.1 %
5500	48.6	5.65	3.83	3.83	3.83	0.45	1.90	± 13.1 %
5600	48.5	5.77	3.84	3.84	3.84	0.40	1.90	± 13.1 %
5800	48.2	6.00	4.14	4.14	4.14	0.45	1.90	± 13.1 %

<sup>C</sup> Frequency validity of ± 100 MHz only applies for DASY v4.4 and higher (see Page 2), else it is restricted to ± 50 MHz. The uncertainty is the RSS of the ConvF uncertainty at calibration frequency and the uncertainty for the indicated frequency band.

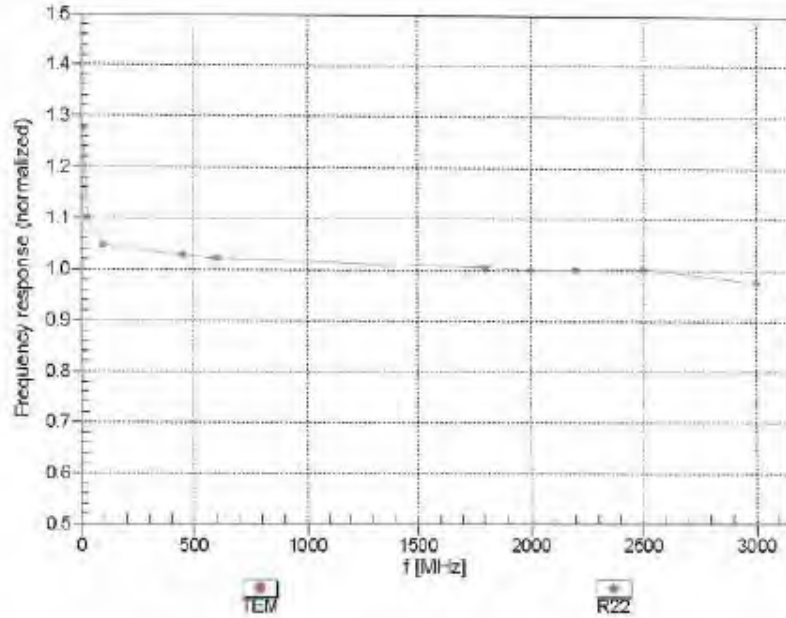
<sup>F</sup> At frequencies below 3 GHz, the validity of tissue parameters ( $\epsilon$  and  $\sigma$ ) can be relaxed to ± 10% if liquid compensation formula is applied to measured SAR values. At frequencies above 3 GHz, the validity of tissue parameters ( $\epsilon$  and  $\sigma$ ) is restricted to ± 5%. The uncertainty is the RSS of the ConvF uncertainty for indicated target tissue parameters.

Appendix 3-8: Calibration certificate: E-Field Probe (EX3DV4) (cont'd)

EX3DV4- SN:3679

July 22, 2013

### Frequency Response of E-Field (TEM-Cell:ifi110 EXX, Waveguide: R22)



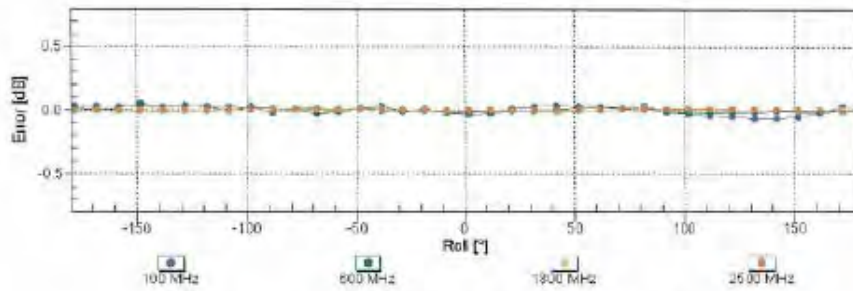
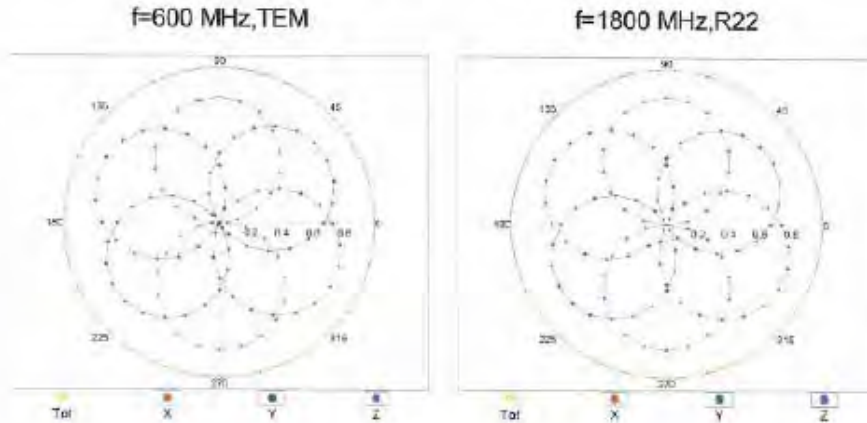
Uncertainty of Frequency Response of E-field:  $\pm 6.3\%$  (k=2)

Appendix 3-8: Calibration certificate: E-Field Probe (EX3DV4) (cont'd)

EX3DV4- SN:3679

July 22, 2013

Receiving Pattern ( $\phi$ ),  $\theta = 0^\circ$



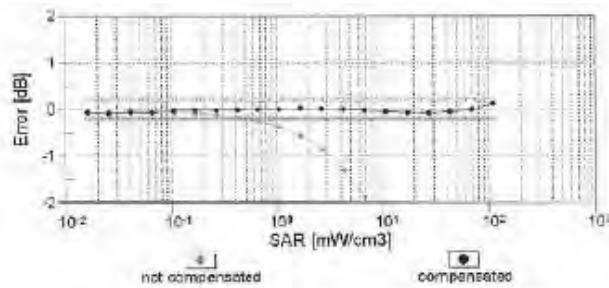
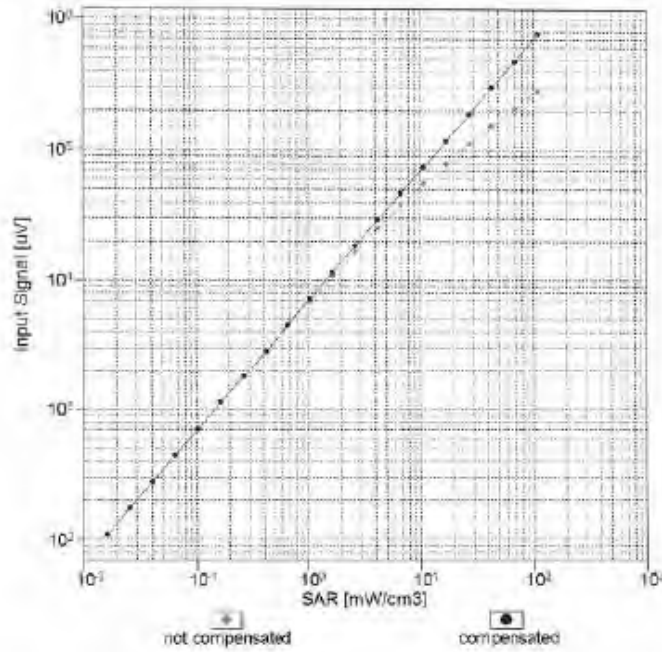
Uncertainty of Axial Isotropy Assessment:  $\pm 0.5\%$  (k=2)

Appendix 3-8: Calibration certificate: E-Field Probe (EX3DV4) (cont'd)

EX3DV4- SN:3679

July 22, 2013

Dynamic Range  $f(SAR_{head})$   
(TEM cell,  $f = 900$  MHz)



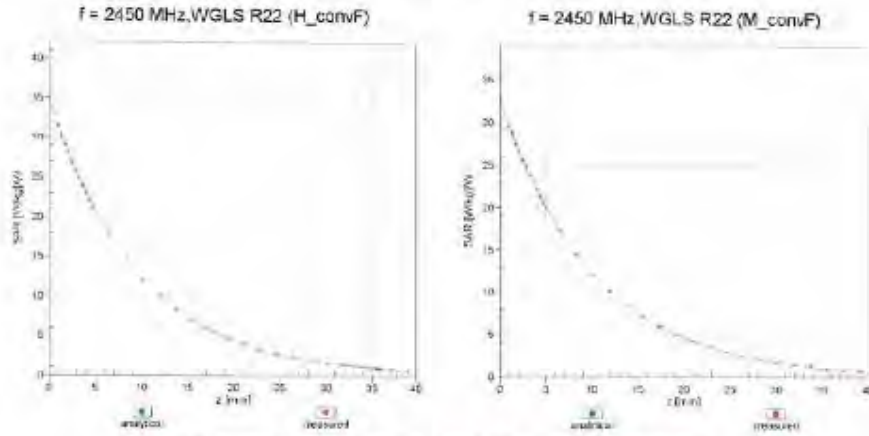
Uncertainty of Linearity Assessment:  $\pm 0.6\%$  ( $k=2$ )

**Appendix 3-8: Calibration certificate: E-Field Probe (EX3DV4) (cont'd)**

EX3DV4- SN:3679

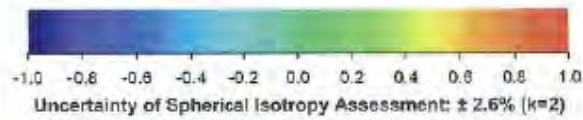
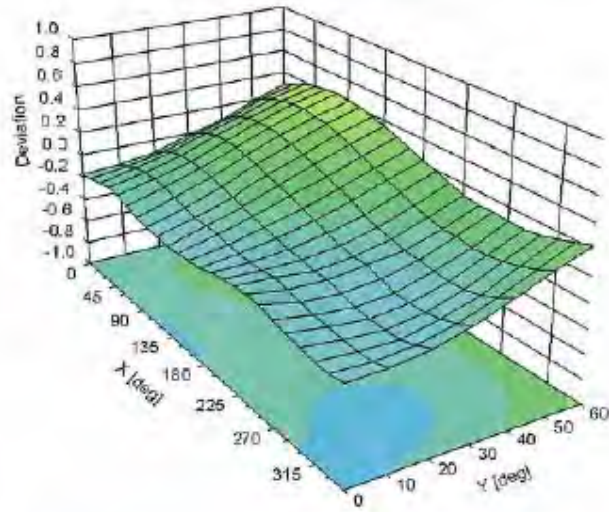
July 22, 2013

**Conversion Factor Assessment**



**Deviation from Isotropy in Liquid**

Error ( $\phi$ ,  $\theta$ ),  $f = 900$  MHz





**Appendix 3-8: Calibration certificate: E-Field Probe (EX3DV4) (cont'd)**

EX3DV4-- SN:3679

July 22, 2013

**DASY/EASY - Parameters of Probe: EX3DV4 - SN:3679**

**Other Probe Parameters**

Sensor Arrangement	Triangular
Connector Angle (°)	11.8
Mechanical Surface Detection Mode	enabled
Optical Surface Detection Mode	disabled
Probe Overall Length	337 mm
Probe Body Diameter	10 mm
Tip Length	9 mm
Tip Diameter	2.5 mm
Probe Tip to Sensor X Calibration Point	1 mm
Probe Tip to Sensor Y Calibration Point	1 mm
Probe Tip to Sensor Z Calibration Point	1 mm
Recommended Measurement Distance from Surface	2 mm

**Appendix 3-9: Calibration certificate: Dipole (D2450V2)**

**Calibration Laboratory of  
Schmid & Partner  
Engineering AG**  
Zeughausstrasse 43, 8004 Zurich, Switzerland



S Schweizerischer Kalibrierdienst  
C Service suisse d'étalonnage  
S Servizio svizzero di taratura  
S Swiss Calibration Service

Accredited by the Swiss Accreditation Service (SAS)  
The Swiss Accreditation Service is one of the signatories to the EA  
Multilateral Agreement for the recognition of calibration certificates

Accreditation No.: SCS 108

Client **UL Japan Shonan (PTT)**

Certificate No: D2450V2-822\_Jan13

CALIBRATION CERTIFICATE			
Object:	D2450V2 - SN: 822		
Calibration procedure(s):	QA CAL-05.v9 Calibration procedure for dipole validation kits above 700 MHz		
Calibration date:	January 08, 2013		
<p>This calibration certificate documents the traceability to national standards, which realize the physical units of measurements (SI).  The measurements and the uncertainties with confidence probability are given on the following pages and are part of the certificate.</p> <p>All calibrations have been conducted in the closed laboratory facility: environment temperature (22 ± 3)°C and humidity &lt; 70%.</p> <p>Calibration Equipment used (M&amp;TE critical for calibration)</p>			
<b>Primary Standards</b>	<b>ID #</b>	<b>Cal Date (Certificate No.)</b>	<b>Scheduled Calibration</b>
Power meter EPM442A	GB37480704	01-Nov-12 (No. 217-01640)	Oct-13
Power sensor HP 8461A	US37292783	01-Nov-12 (No. 217-01640)	Oct-13
Reference 20 dB Attenuator	SN: 5058 [20K]	27-Mar-12 (No. 217-01530)	Apr-13
Type-N mismatch combination	SN: 5047.3 / 06327	27-Mar-12 (No. 217-01530)	Apr-13
Reference Probe ES3DV3	SN: 3205	28-Dec-12 (No. ES3-3205_Dec12)	Dec-13
DAE4	SN: 601	27-Jun-12 (No. DAE4-601_Jun12)	Jun-13
<b>Secondary Standards</b>	<b>ID #</b>	<b>Check Date (in house)</b>	<b>Scheduled Check</b>
Power sensor HP 8461A	MY41082317	18-Oct-02 (in house check Oct-11)	In house check: Oct-13
RF generator R&S SMT-06	100005	04-Aug-09 (in house check Oct-11)	In house check: Oct-13
Network Analyzer HP 8753E	US37390585 84206	18-Oct-01 (in house check Oct-12)	In house check: Oct-13
Calibrated by:	Name Isao E-Nakao	Function Laboratory Technician	Signature 
Approved by:	Katja Polowic	Technical Manager	
			Issued: January 8, 2013
This calibration certificate shall not be reproduced except in full without written approval of the laboratory.			

Appendix 3-9: Calibration certificate: Dipole (D2450V2) (cont'd)

Calibration Laboratory of  
Schmid & Partner  
Engineering AG  
Zeughausstrasse 43, 8004 Zurich, Switzerland



S Schweizerischer Kalibrierdienst  
C Service suisse d'étalonnage  
S Servizio svizzero di taratura  
S Swiss Calibration Service

Accredited by the Swiss Accreditation Service (SAS)  
The Swiss Accreditation Service is one of the signatories to the EA  
Multilateral Agreement for the recognition of calibration certificates

Accreditation No.: SCS 108

**Glossary:**

TSL tissue simulating liquid  
ConvF sensitivity in TSL / NORM x,y,z  
N/A not applicable or not measured

**Calibration is Performed According to the Following Standards:**

- IEEE Std 1528-2003, "IEEE Recommended Practice for Determining the Peak Spatial-Averaged Specific Absorption Rate (SAR) in the Human Head from Wireless Communications Devices: Measurement Techniques", December 2003
- IEC 62209-1, "Procedure to measure the Specific Absorption Rate (SAR) for hand-held devices used in close proximity to the ear (frequency range of 300 MHz to 3 GHz)", February 2005
- Federal Communications Commission Office of Engineering & Technology (FCC OET), "Evaluating Compliance with FCC Guidelines for Human Exposure to Radiofrequency Electromagnetic Fields; Additional Information for Evaluating Compliance of Mobile and Portable Devices with FCC Limits for Human Exposure to Radiofrequency Emissions", Supplement C (Edition 01-01) to Bulletin 65

**Additional Documentation:**

- DASY4/5 System Handbook

**Methods Applied and Interpretation of Parameters:**

- Measurement Conditions:** Further details are available from the Validation Report at the end of the certificate. All figures stated in the certificate are valid at the frequency indicated.
- Antenna Parameters with TSL:** The dipole is mounted with the spacer to position its feed point exactly below the center marking of the flat phantom section, with the arms oriented parallel to the body axis.
- Feed Point Impedance and Return Loss:** These parameters are measured with the dipole positioned under the liquid filled phantom. The impedance stated is transformed from the measurement at the SMA connector to the feed point. The Return Loss ensures low reflected power. No uncertainty required.
- Electrical Delay:** One-way delay between the SMA connector and the antenna feed point. No uncertainty required.
- SAR measured:** SAR measured at the stated antenna input power.
- SAR normalized:** SAR as measured, normalized to an input power of 1 W at the antenna connector.
- SAR for nominal TSL parameters:** The measured TSL parameters are used to calculate the nominal SAR result.

The reported uncertainty of measurement is stated as the standard uncertainty of measurement multiplied by the coverage factor  $k=2$ , which for a normal distribution corresponds to a coverage probability of approximately 95%.

Appendix 3-9: Calibration certificate: Dipole (D2450V2) (cont'd)

**Measurement Conditions**

DASY system configuration, as far as not given on page 1.

DASY Version	DASY5	V52.8.4
Extrapolation	Advanced Extrapolation	
Phantom	Modular Flat Phantom	
Distance Dipole Center - TSL	10 mm	with Spacer
Zoom Scan Resolution	dx, dy, dz = 5 mm	
Frequency	2450 MHz ± 1 MHz	

**Head TSL parameters**

The following parameters and calculations were applied.

	Temperature	Permittivity	Conductivity
Nominal Head TSL parameters	22.0 °C	39.2	1.80 mho/m
Measured Head TSL parameters	(22.0 ± 0.2) °C	37.9 ± 6 %	1.85 mho/m ± 6 %
Head TSL temperature change during test	< 0.5 °C	---	---

**SAR result with Head TSL**

SAR averaged over 1 cm <sup>3</sup> (1 g) of Head TSL	Condition	
SAR measured	250 mW input power	13.4 W/kg
SAR for nominal Head TSL parameters	normalized to 1W	52.5 W/kg ± 17.0 % (k=2)

SAR averaged over 10 cm <sup>3</sup> (10 g) of Head TSL	condition	
SAR measured	250 mW input power	6.23 W/kg
SAR for nominal Head TSL parameters	normalized to 1W	24.6 W/kg ± 16.5 % (k=2)

**Body TSL parameters**

The following parameters and calculations were applied.

	Temperature	Permittivity	Conductivity
Nominal Body TSL parameters	22.0 °C	52.7	1.85 mho/m
Measured Body TSL parameters	(22.0 ± 0.2) °C	50.5 ± 6 %	2.01 mho/m ± 6 %
Body TSL temperature change during test	< 0.5 °C	---	---

**SAR result with Body TSL**

SAR averaged over 1 cm <sup>3</sup> (1 g) of Body TSL	Condition	
SAR measured	250 mW input power	12.8 W/kg
SAR for nominal Body TSL parameters	normalized to 1W	50.0 W/kg ± 17.0 % (k=2)

SAR averaged over 10 cm <sup>3</sup> (10 g) of Body TSL	condition	
SAR measured	250 mW input power	5.93 W/kg
SAR for nominal Body TSL parameters	normalized to 1W	23.4 W/kg ± 16.5 % (k=2)

Appendix 3-9: Calibration certificate: Dipole (D2450V2) (cont'd)

**Appendix**

**Antenna Parameters with Head TSL**

Impedance, transformed to feed point	53.6 $\Omega$ + 3.5 j $\Omega$
Return Loss	- 26.3 dB

**Antenna Parameters with Body TSL**

Impedance, transformed to feed point	50.4 $\Omega$ + 5.2 j $\Omega$
Return Loss	- 25.7 dB

**General Antenna Parameters and Design**

Electrical Delay (one direction)	1.160 ns
----------------------------------	----------

After long term use with 100W radiated power, only a slight warming of the dipole near the feedpoint can be measured.

The dipole is made of standard semirigid coaxial cable. The center conductor of the feeding line is directly connected to the second arm of the dipole. The antenna is therefore short-circuited for DC-signals. On some of the dipoles, small end caps are added to the dipole arms in order to improve matching when loaded according to the position as explained in the "Measurement Conditions" paragraph. The SAR data are not affected by this change. The overall dipole length is still according to the Standard.

No excessive force must be applied to the dipole arms, because they might bend or the soldered connections near the feedpoint may be damaged.

**Additional EUT Data**

Manufactured by	SPEAG
Manufactured on	December 11, 2008

Appendix 3-9: Calibration certificate: Dipole (D2450V2) (cont'd)

**DASY5 Validation Report for Head TSL**

Date: 08.01.2013

Test Laboratory: SPEAG, Zurich, Switzerland

**DUT: Dipole 2450 MHz; Type: D2450V2; Serial: D2450V2 - SN: 822**

Communication System: CW; Frequency: 2450 MHz

Medium parameters used:  $f = 2450$  MHz;  $\sigma = 1.85$  S/m;  $\epsilon_r = 37.9$ ;  $\rho = 1000$  kg/m<sup>3</sup>

Phantom section: Flat Section

Measurement Standard: DASY5 (IEEE/IEC/ANSI C63.19-2007)

DASY52 Configuration:

- Probe: ES3DV3 - SN3205; ConvF(4.52, 4.52, 4.52); Calibrated: 28.12.2012;
- Sensor-Surface: 3mm (Mechanical Surface Detection)
- Electronics: DAE4 Sn601; Calibrated: 27.06.2012
- Phantom: Flat Phantom 5.0 (front); Type: QD000P50AA; Serial: 1001
- DASY52 52.8.4(1052); SEMCAD X 14.6.8(7028)

**Dipole Calibration for Head Tissue/Pin=250 mW, d=10mm/Zoom Scan (7x7x7)/Cube 0:**

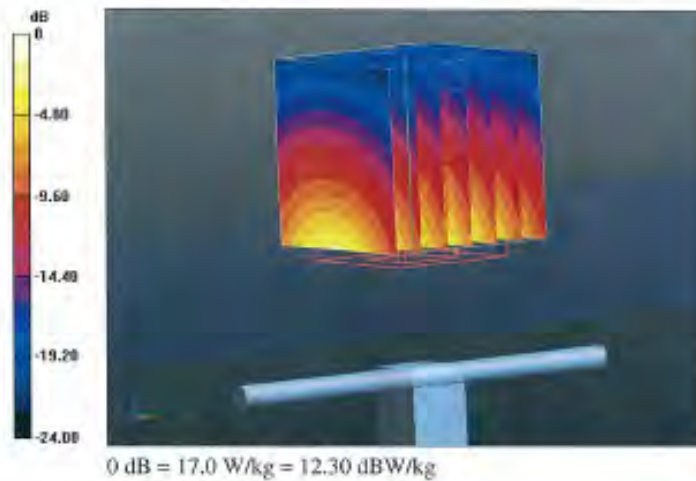
Measurement grid: dx=5mm, dy=5mm, dz=5mm

Reference Value = 99.521 V/m; Power Drift = 0.06 dB

Peak SAR (extrapolated) = 27.9 W/kg

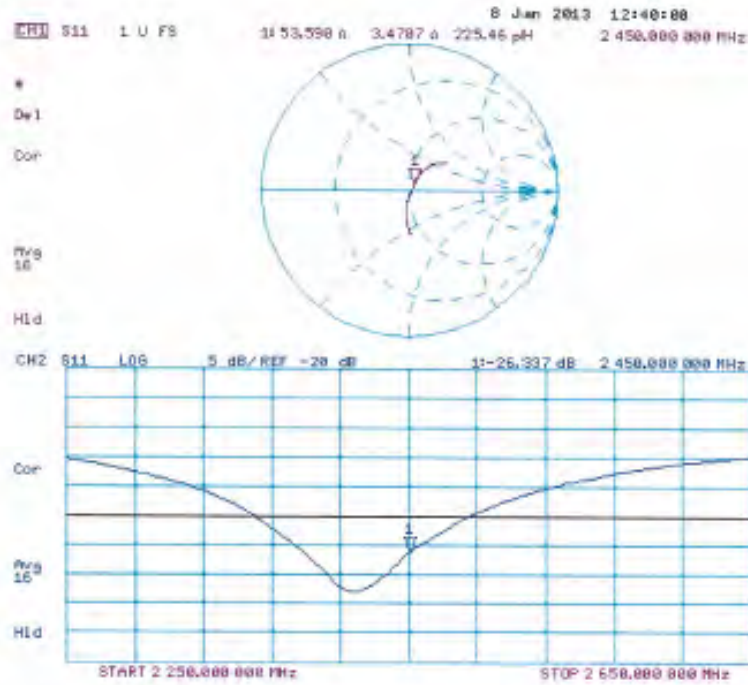
**SAR(1 g) = 13.4 W/kg; SAR(10 g) = 6.23 W/kg**

Maximum value of SAR (measured) = 17.0 W/kg



Appendix 3-9: Calibration certificate: Dipole (D2450V2) (cont'd)

**Impedance Measurement Plot for Head TSL**





Appendix 3-9: Calibration certificate: Dipole (D2450V2) (cont'd)

**DASY5 Validation Report for Body TSL**

Date: 08.01.2013

Test Laboratory: SPEAG, Zurich, Switzerland

**DUT: Dipole 2450 MHz; Type: D2450V2; Serial: D2450V2 - SN: 822**

Communication System: CW; Frequency: 2450 MHz

Medium parameters used:  $f = 2450$  MHz;  $\sigma = 2.01$  S/m;  $\epsilon_r = 50.5$ ;  $\rho = 1000$  kg/m<sup>3</sup>

Phantom section: Flat Section

Measurement Standard: DASY5 (IEEE/IEC/ANSI C63.19-2007)

DASY52 Configuration:

- Probe: ES3DV3 - SN3205; ConvF(4.42, 4.42, 4.42); Calibrated: 28.12.2012;
- Sensor-Surface: 3mm (Mechanical Surface Detection)
- Electronics: DAE4 Sn601; Calibrated: 27.06.2012
- Phantom: Flat Phantom 5.0 (back); Type: QD000P50AA; Serial: 1002
- DASY52 52.8.4(1052); SEMCAD X 14.6.8(7028)

**Dipole Calibration for Body Tissue/Pin=250 mW, d=10mm/Zoom Scan (7x7x7)/Cube 0:**

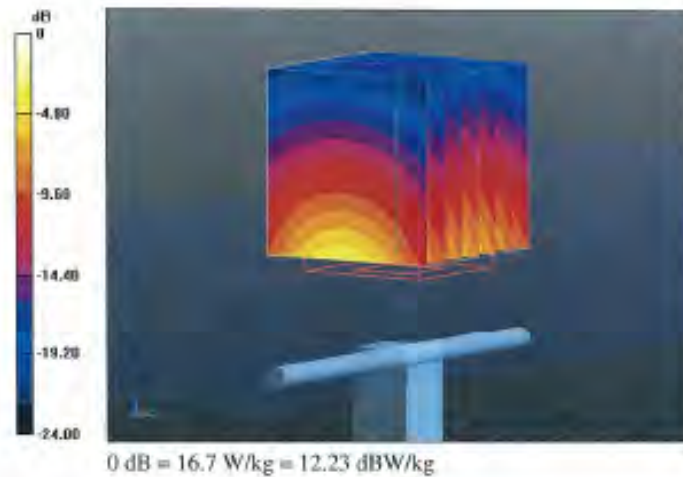
Measurement grid: dx=5mm, dy=5mm, dz=5mm

Reference Value = 93.977 V/m; Power Drift = 0.01 dB

Peak SAR (extrapolated) = 27.0 W/kg

**SAR(1 g) = 12.8 W/kg; SAR(10 g) = 5.93 W/kg**

Maximum value of SAR (measured) = 16.7 W/kg





Appendix 3-9: Calibration certificate: Dipole (D2450V2) (cont'd)

**Impedance Measurement Plot for Body TSL**

