

**EXHIBIT 9****Internal Photographs**

(Pursuant to FCC Part 2.1033(b)(7), 2.1033(c)(12) and RSP 100 Annex C)

The following photographs are attached.

	<u>Exhibit</u>
1. RF board <u>with</u> Shields (Top)	9A
2. RF board <u>without</u> Shields (Top)	9B
3. RF board <u>with</u> Shields (Bottom)	9C
4. RF board <u>without</u> Shields (Bottom)	9D
5. RF boards <u>with</u> chassis and housing for (Front Side)	9E
6. Chassis and housing (Back Side)	9F
7. Raspberry Pi Board (Top)	9G
8. Raspberry Pi Board (Bottom)	9H
9. Interface board (Top)	9I
10. Interface board (Bottom)	9J
11. DH300 Hub (Side View Right)	9K

EXHIBIT 9A - RF board with Shields (Top)



EXHIBIT 9B - RF board without Shields (Top)



EXHIBIT 9C - RF board with Shields (Bottom)

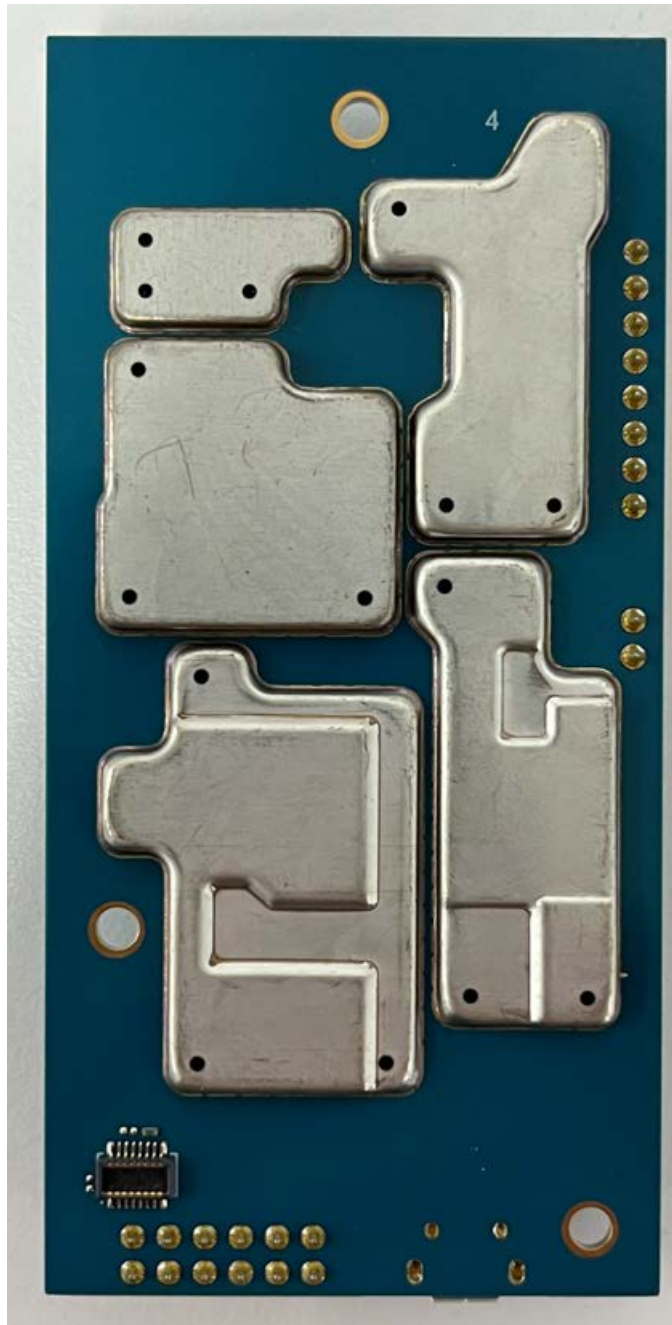


EXHIBIT 9D - RF board without Shields (Bottom)

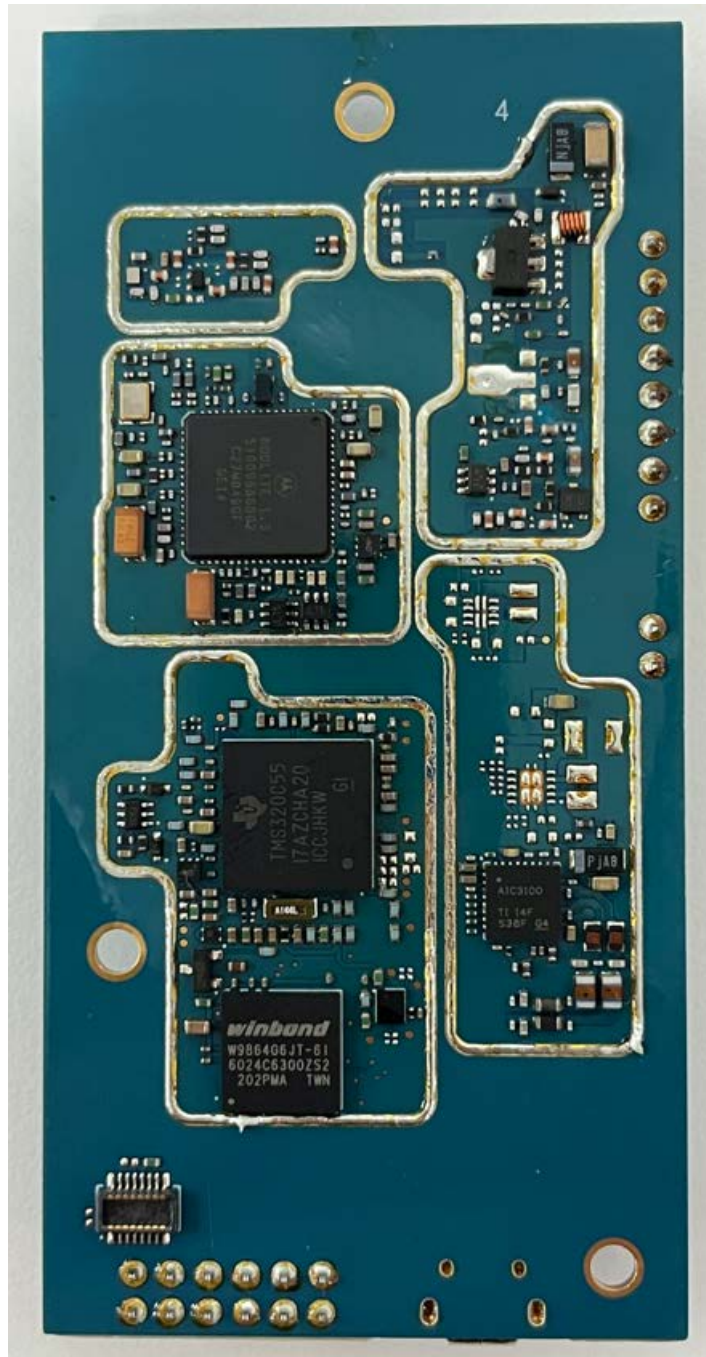


EXHIBIT 9E - RF boards with chassis and housing for (Front Side)



EXHIBIT 9F - Chassis and housing (Back Side)

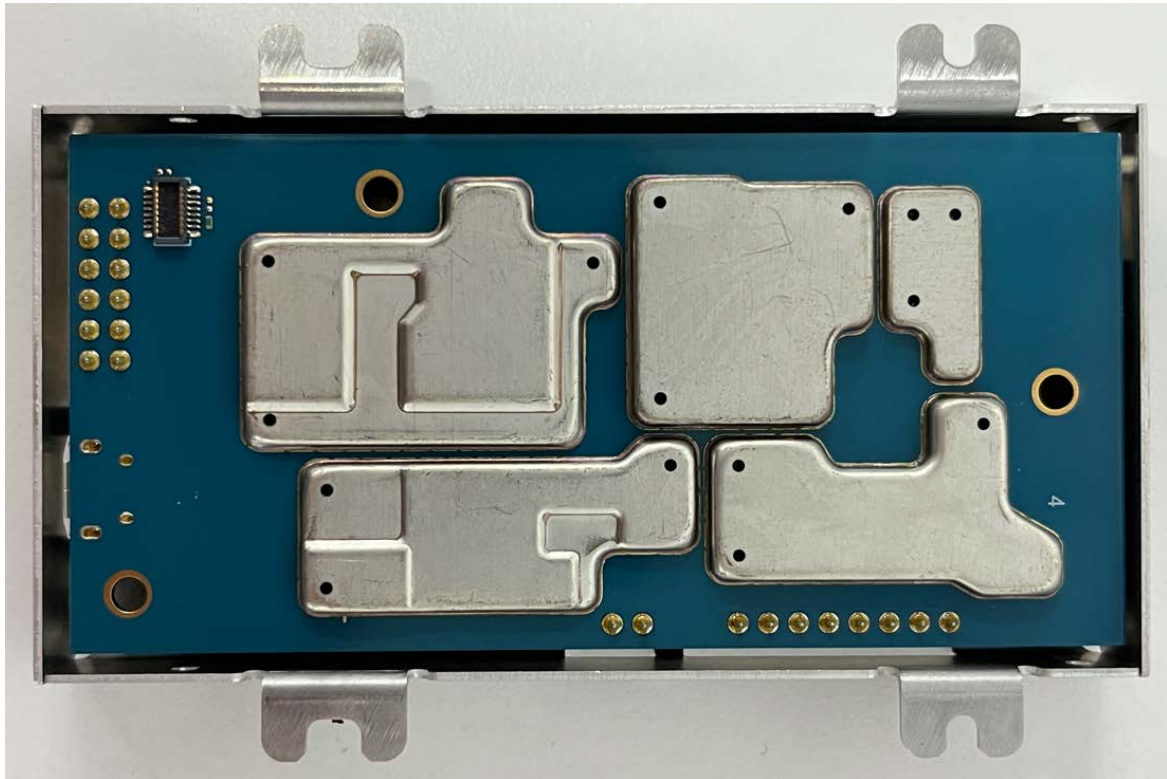
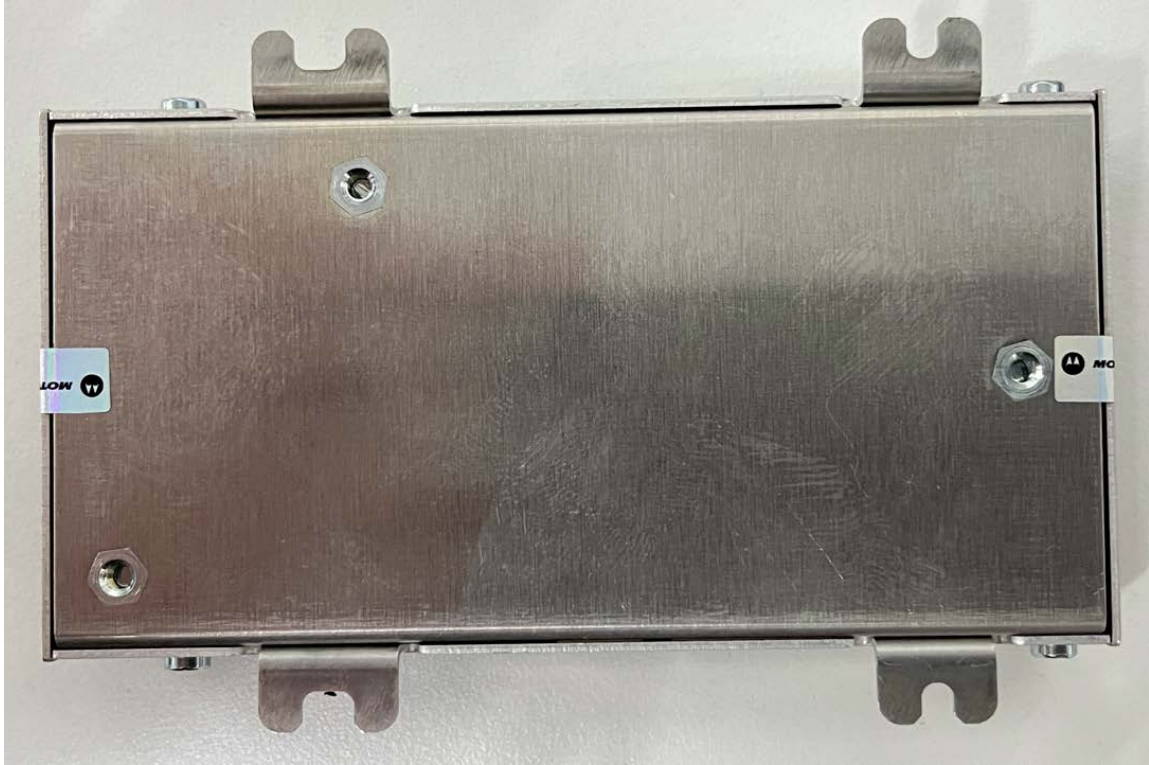


EXHIBIT 9G - Raspberry Pi Board (Top)

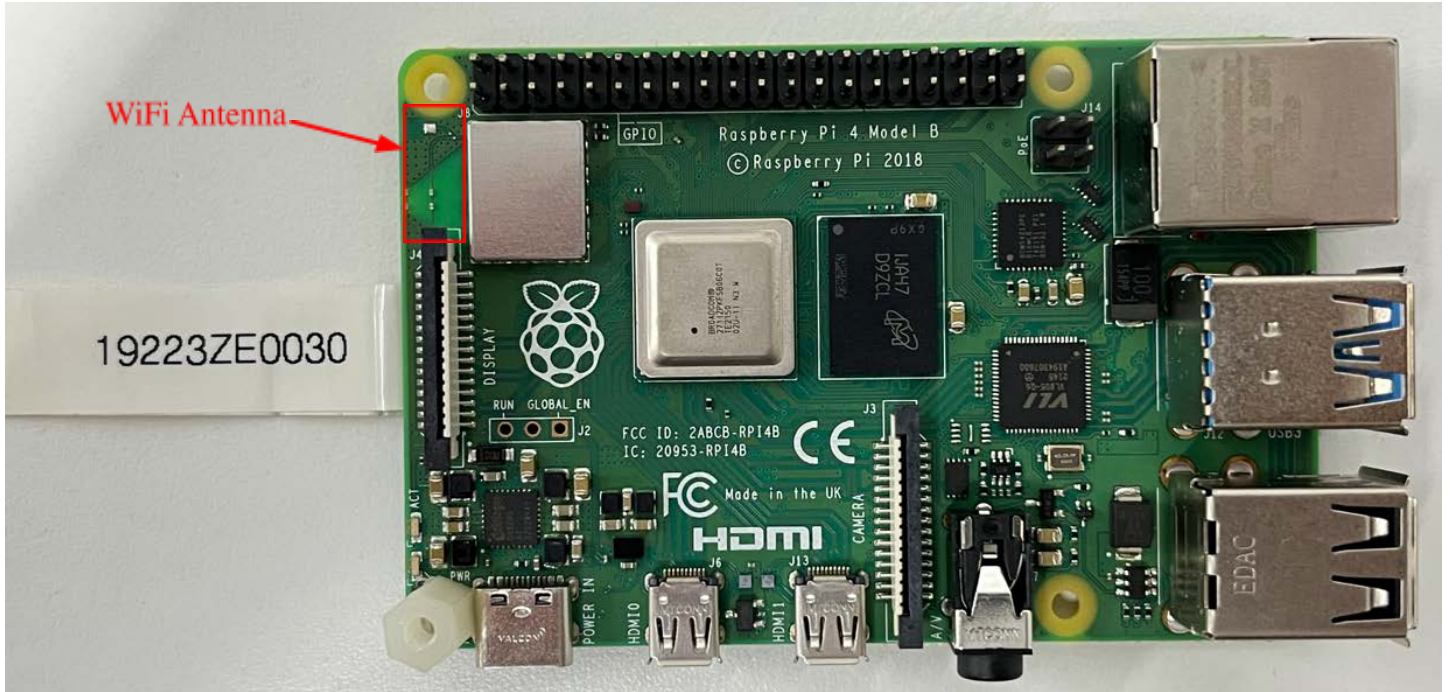


EXHIBIT 9H - Raspberry Pi Board (Bottom)

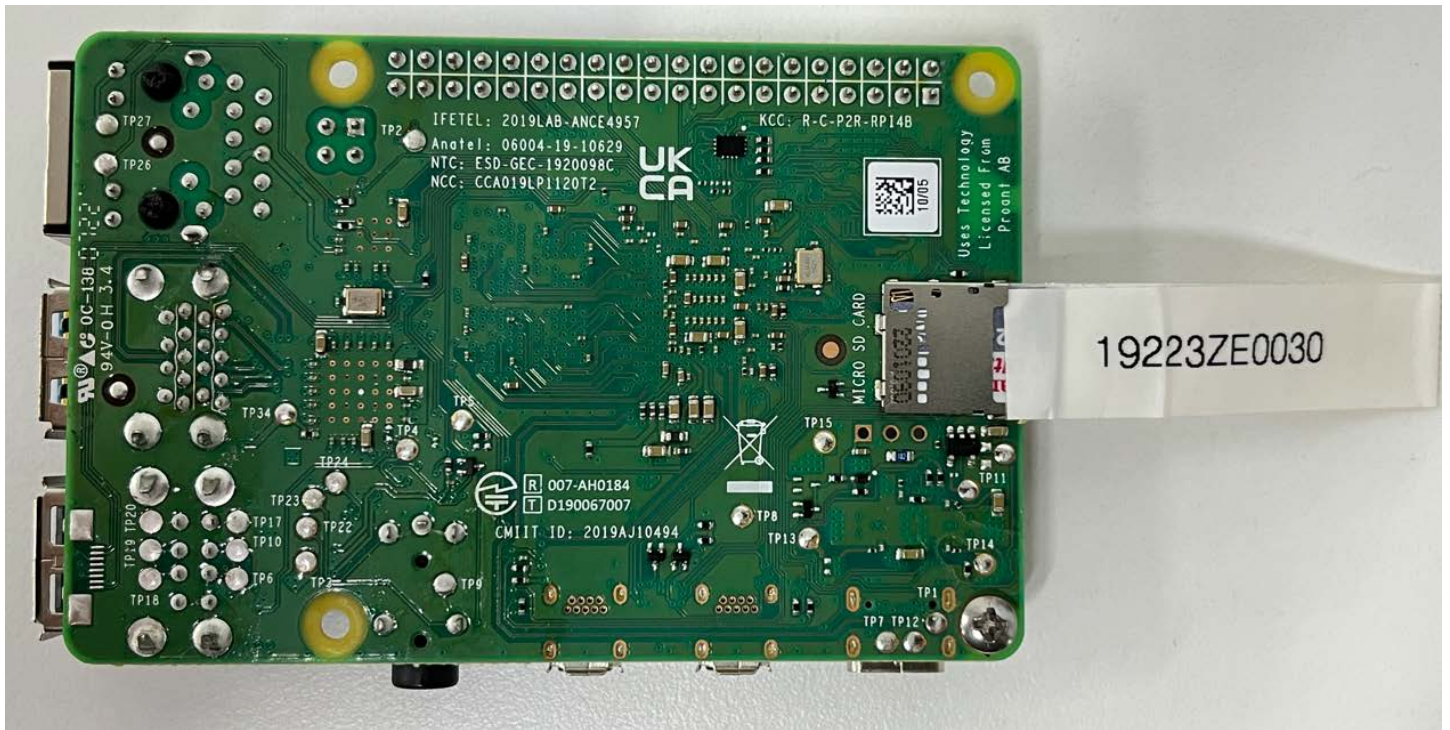




EXHIBIT 9I - Interface board (Top)

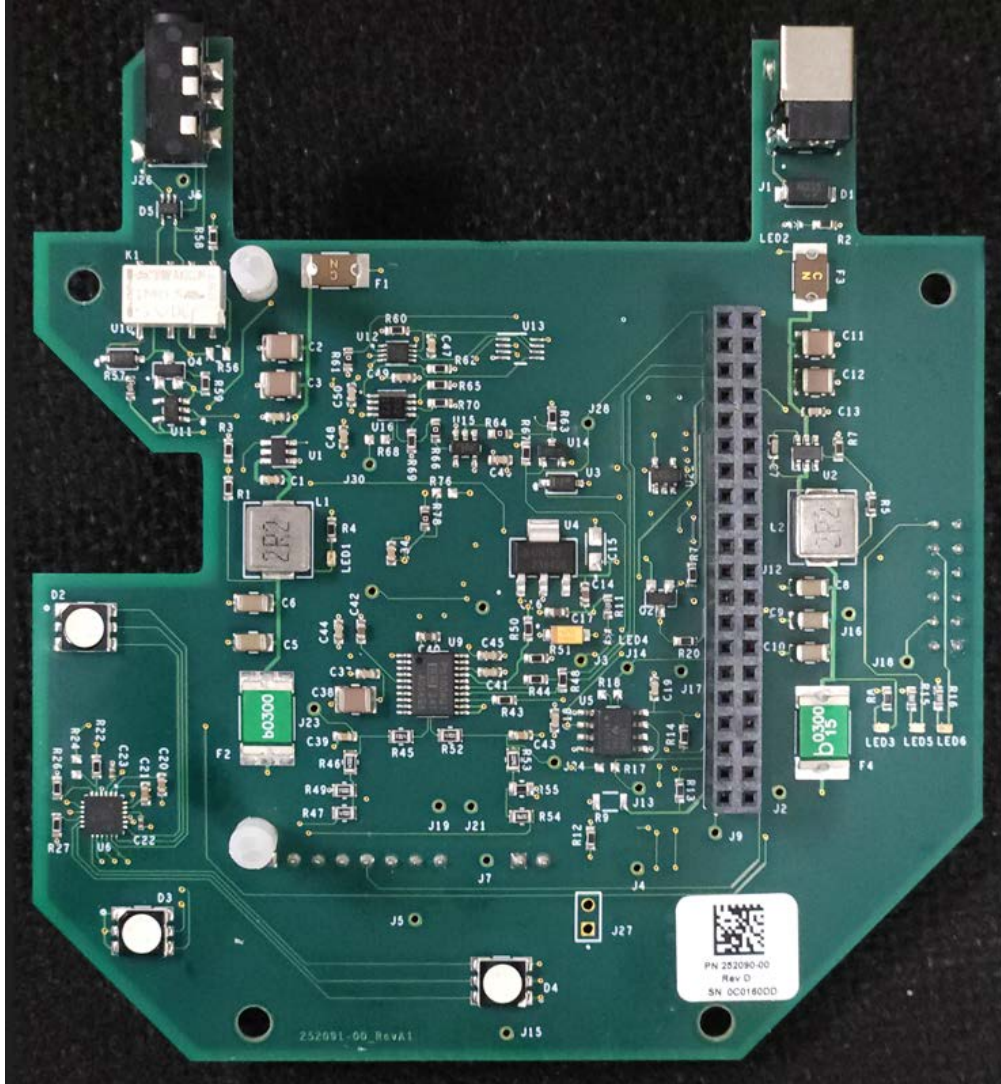


EXHIBIT 9J - Interface board (Bottom)

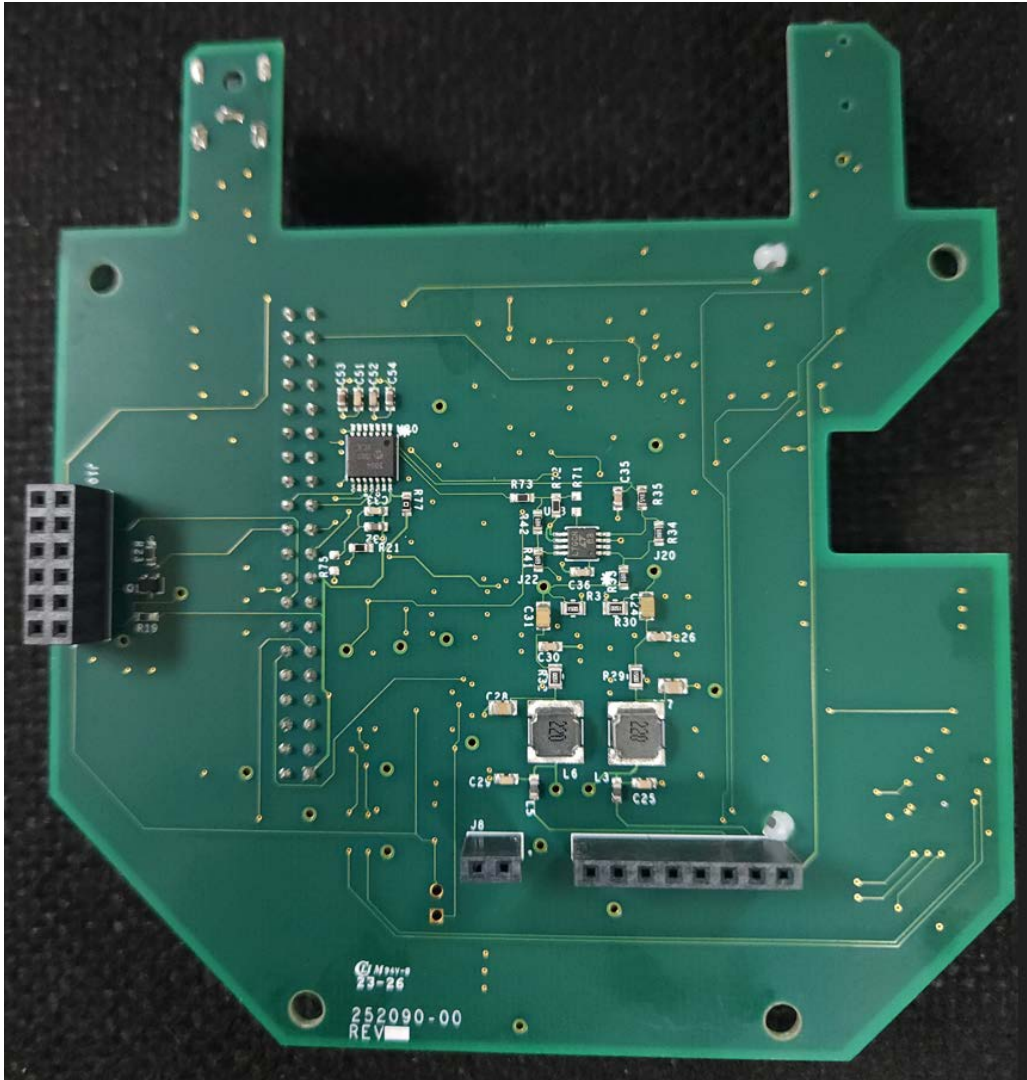
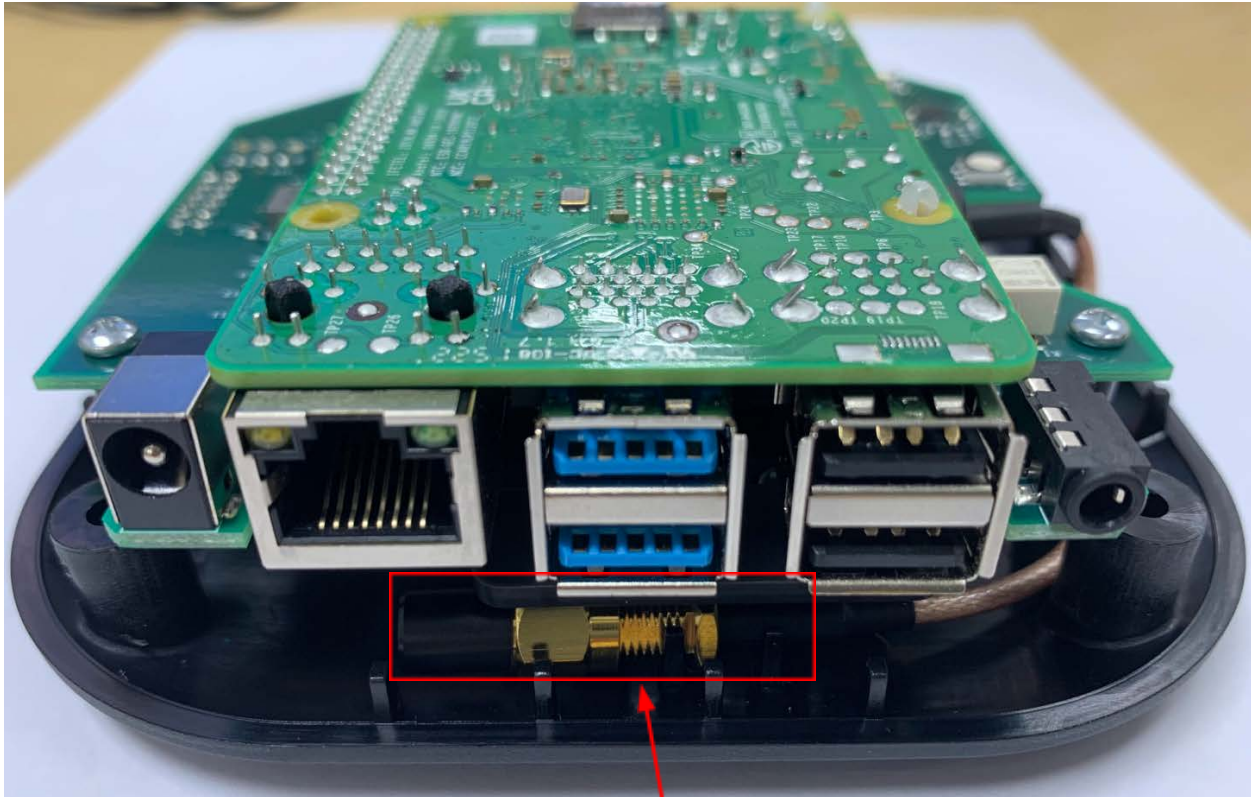


EXHIBIT 9K - DH300 Hub (Side View Right)



ISM TX Antenna

\*\*\* END \*\*\*