

## EXHIBIT 9

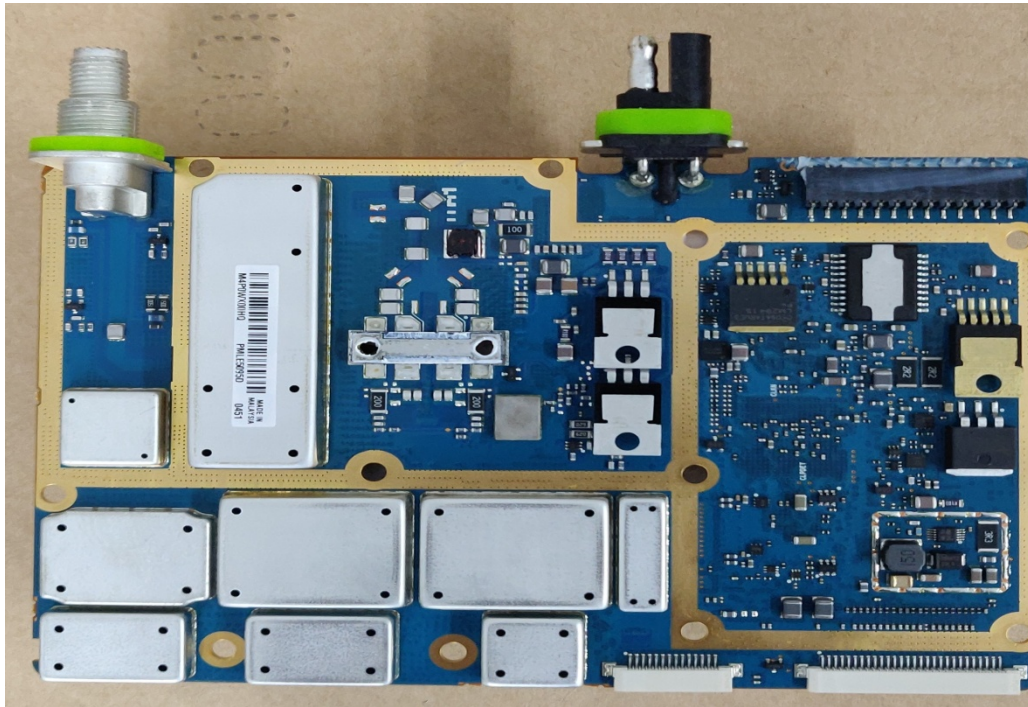
### Internal Photographs

(Pursuant to FCC Part 2.1033(b)(7), 2.1033(c)(12) and RSP 100 Annex C)

The following photographs are attached.

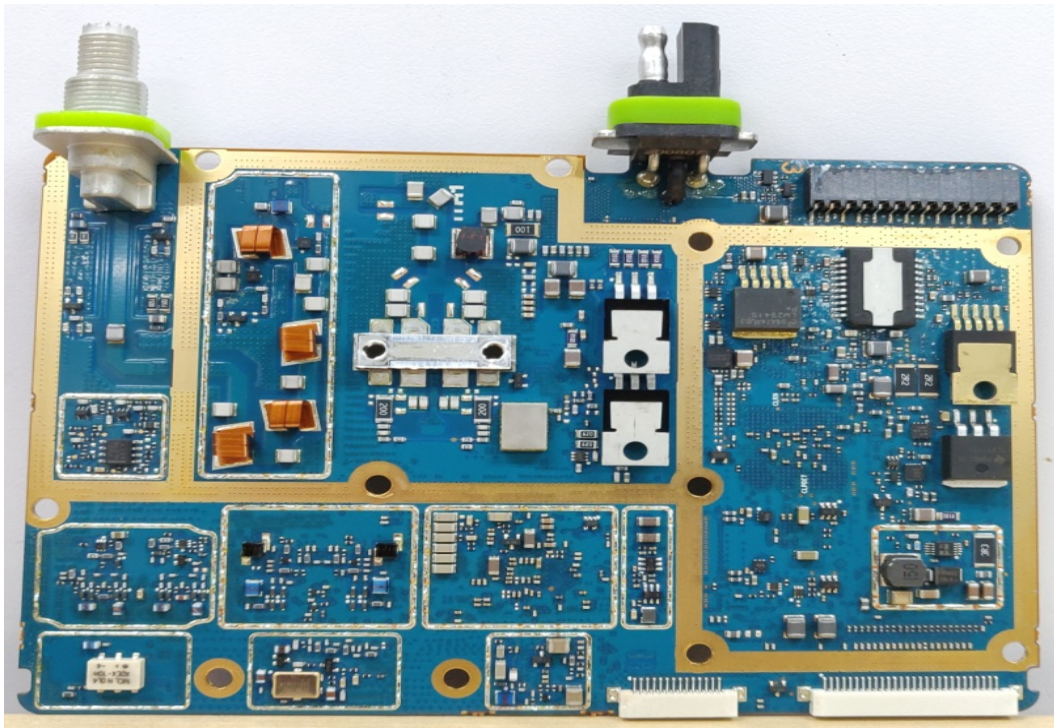
	<u>Exhibit</u>
1. RF board <u>with</u> Shields (Top)	9A
2. RF board <u>without</u> Shields (Top)	9B
3. RF board <u>with</u> Shields (Bottom)	9C
4. RF board <u>without</u> Shields (Bottom)	9D
5. Chassis and control heads (Top)	9E
6. Chassis and control heads (Bottom)	9F
7. GOB board (Top)	9G
8. GOB board with Shields (Bottom)	9H
9. GOB board without Shields (Bottom)	9I
10. Expansion Board (Top)	9J
11. Expansion board with Shields (Bottom)	9K
12. Expansion board without Shields (Bottom)	9L

Exhibits 9A



RF board with Shields (Top)

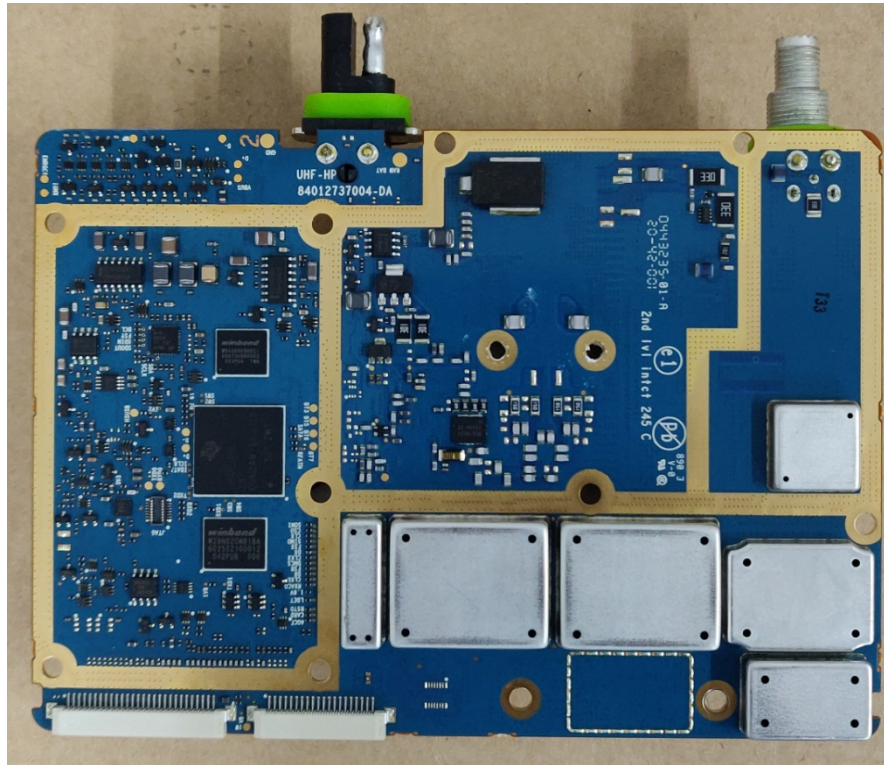
Exhibits 9B



RF board without Shields (Top)

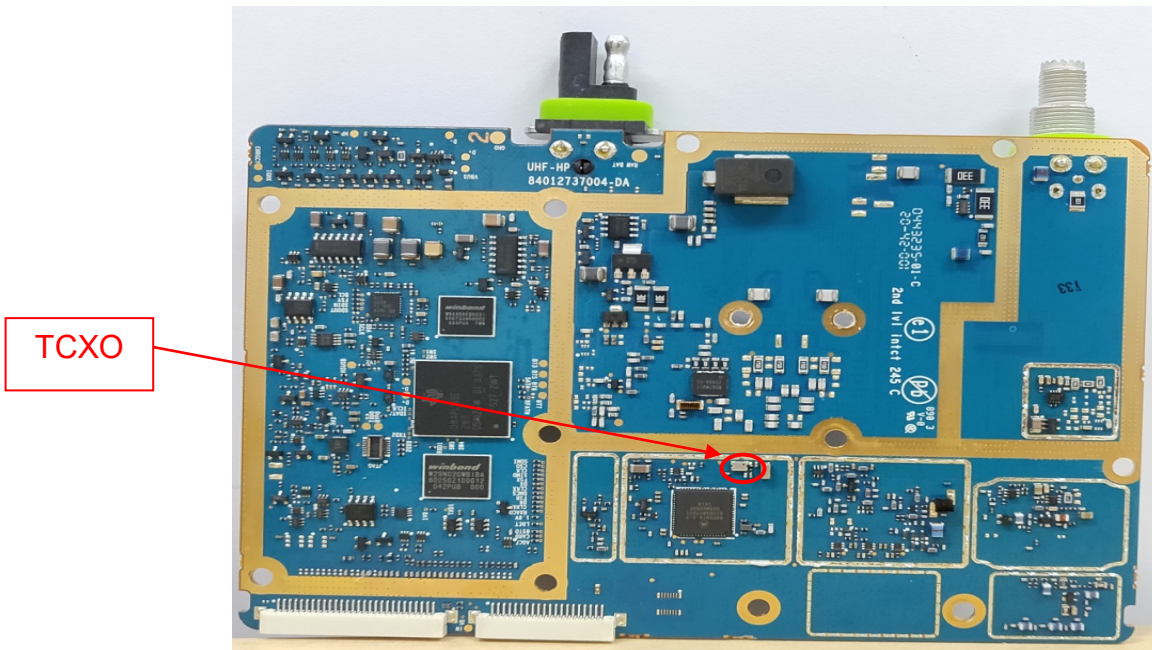


Exhibits 9C



RF board with Shields (Bottom)

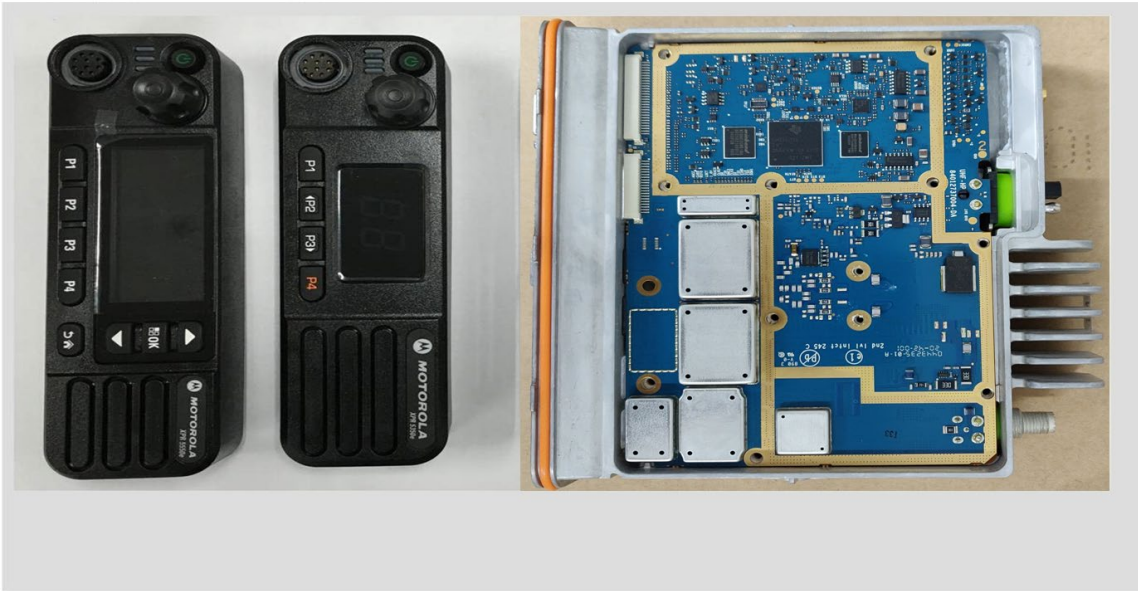
Exhibits 9D



RF board without Shields (Bottom)

Exhibits 9E

Colour Display Control Head For XPR 5550e      Numeric Display Control Head For XPR 5350e



Chassis and control heads (Top)

Exhibits 9F

Colour Display Control Head For XPR 5550e      Numeric Display Control Head For XPR 5350e



Chassis and control heads (Bottom)

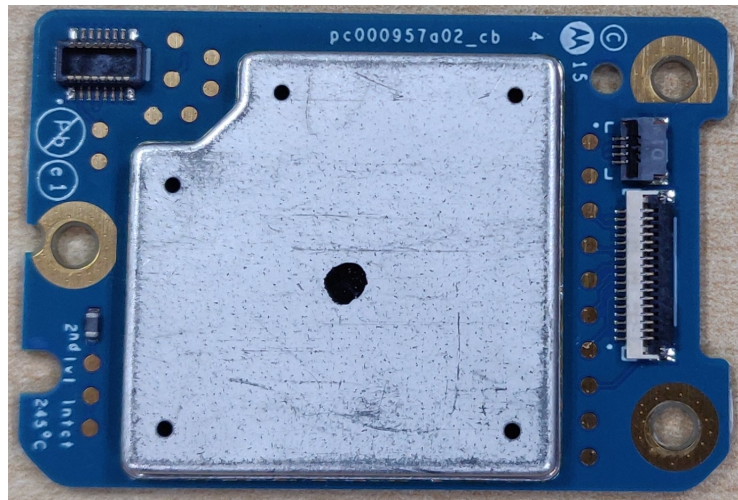


Exhibits 9G



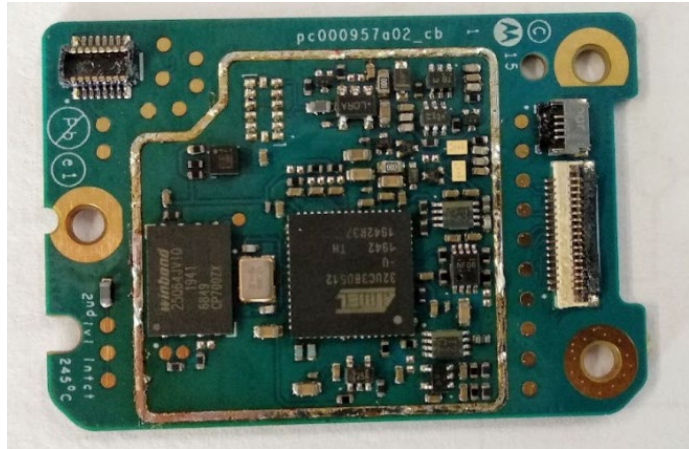
GOB board (Top)

Exhibits 9H



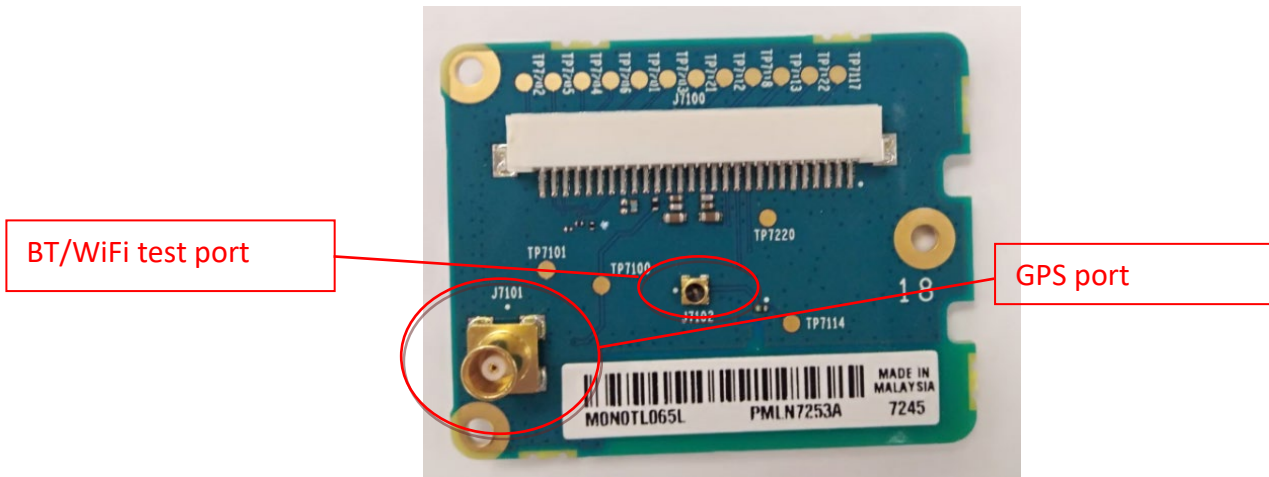
GOB board with shield (Bottom)

Exhibits 9I



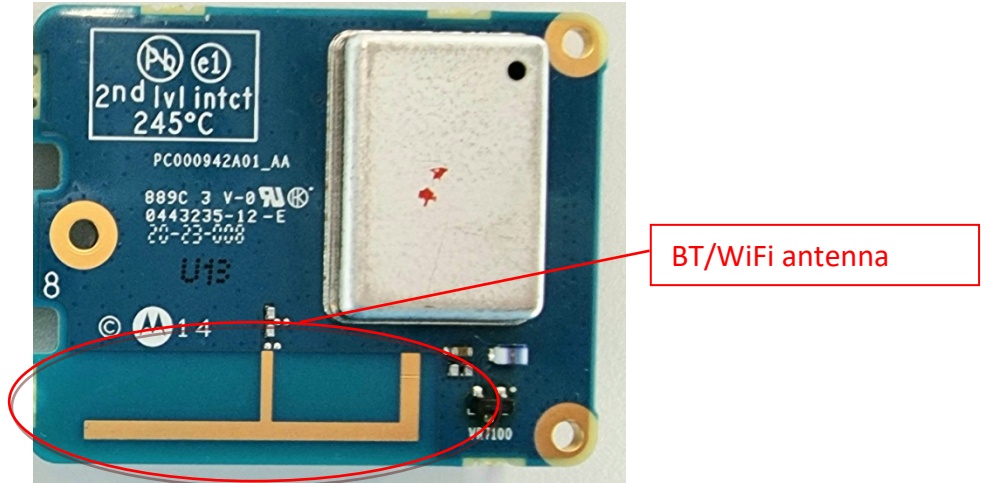
GOB board without shield (Bottom)

Exhibits 9J



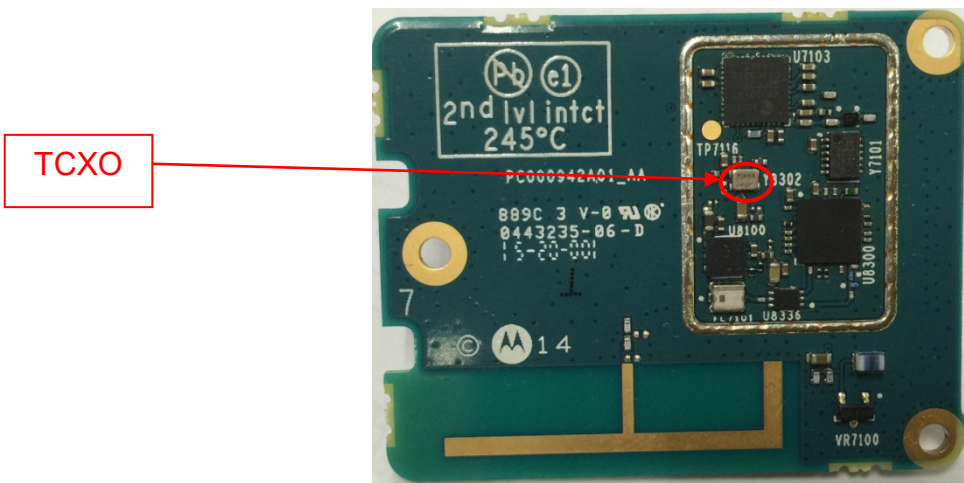
Expansion board (Top)

Exhibits 9K



Expansion board with shield (Bottom)

Exhibits 9L



Expansion board without shield (Bottom)