

**EXHIBIT 9****INTERNAL PHOTOGRAPHS**

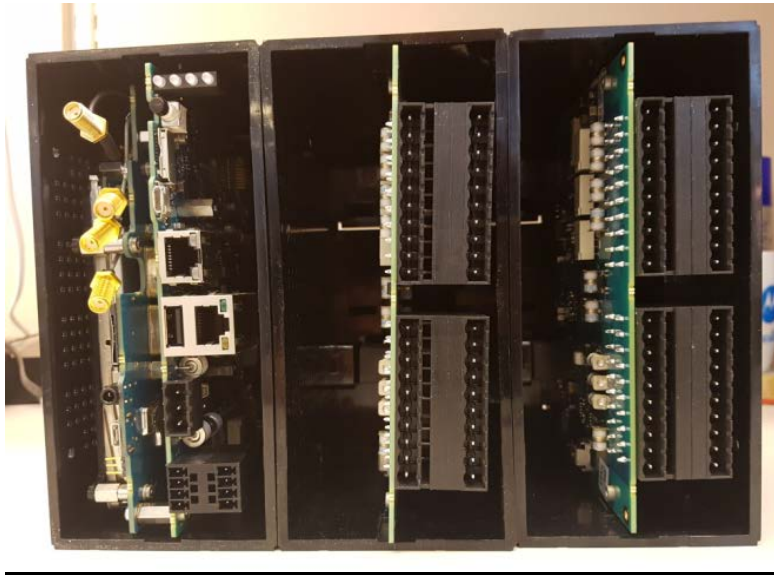
(Pursuant to FCC Part 2.1033(b)(7), 2.1033(c)(12) and RSP 100 Sec 8.3)

The following photographs are attached.

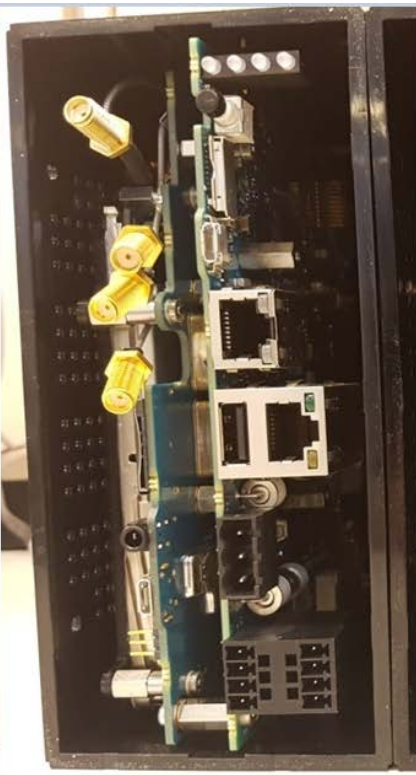
Exhibit

1. MC-EDGE Overall Front Panel Inside View	9A
2. MC-EDGE CPU Board Top View With Front Panel	9B
3. MC-EDGE CPU Board Top View Without Front Panel	9C
4. MC-EDGE Piggy Board Top View With Front Panel (APX4000 UHF 2 Installed)	9D
5. MC-EDGE Piggy Board Top View With Front Panel (APX4000 UHF 2 Flipped over)	9E
6. MC-EDGE Piggy Board Top View Without Front Panel (APX4000 UHF 2 Removed)	9F
7. MC-EDGE APX4000 UHF 2 Heatsink assembly view	9G
8. APX4000 UHF 2 Board Without and With Shields (Top)	9H
9. APX4000 UHF 2 Board Without and With Shields (Bottom)	9I
10. MC-EDGE Piggy Board Top View With Front Panel (APX4000 UHF 2 Installed, with LORA and LTE)	9J
11. MC-EDGE Piggy Board Top View With Front Panel (APX4000 UHF 2 Flipped over, with LORA and LTE)	9K
12. MC-EDGE Piggy Board Top View With Front Panel (APX4000 UHF 2 Removed, with LORA and LTE)	9L
13. MC-EDGE Piggy Board Top View (APX4000 UHF 2 Installed, with LORA and LTE) Without Front Panel	9M
14. MC-EDGE Piggy Board Top View (APX4000 UHF 2 Flipped over, with LORA and LTE) Without Front Panel	9N
15. MC-EDGE Piggy Board Top View (APX4000 UHF 2 Removed, with LORA and LTE) Without Front Panel	9O
16. CPU Board Top View and Piggy Board Top View	9P
17. CPU Board Bottom View and Piggy Board Bottom View With Shields	9Q
18. CPU Board Bottom View and Piggy Board Bottom View Without Shields	9R
19. LoRA MODULE Front View	9S
20. LoRA MODULE Back View	9T
21. LTE MODULE Front View	9U
22. LTE MODULE Back View	9V
23. Exploded View	9W

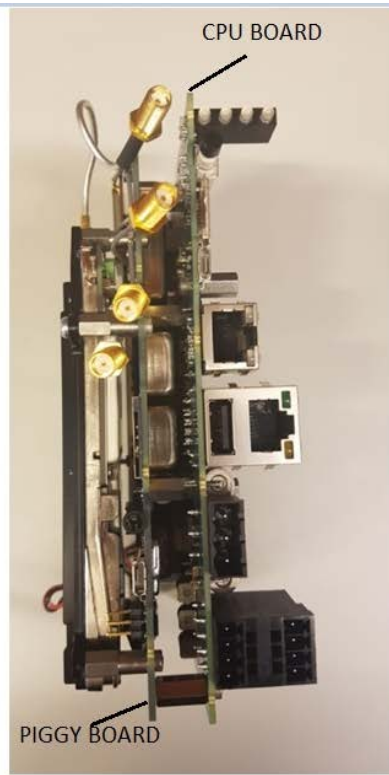
**EXHIBIT 9A**



FRONT PANEL COVER



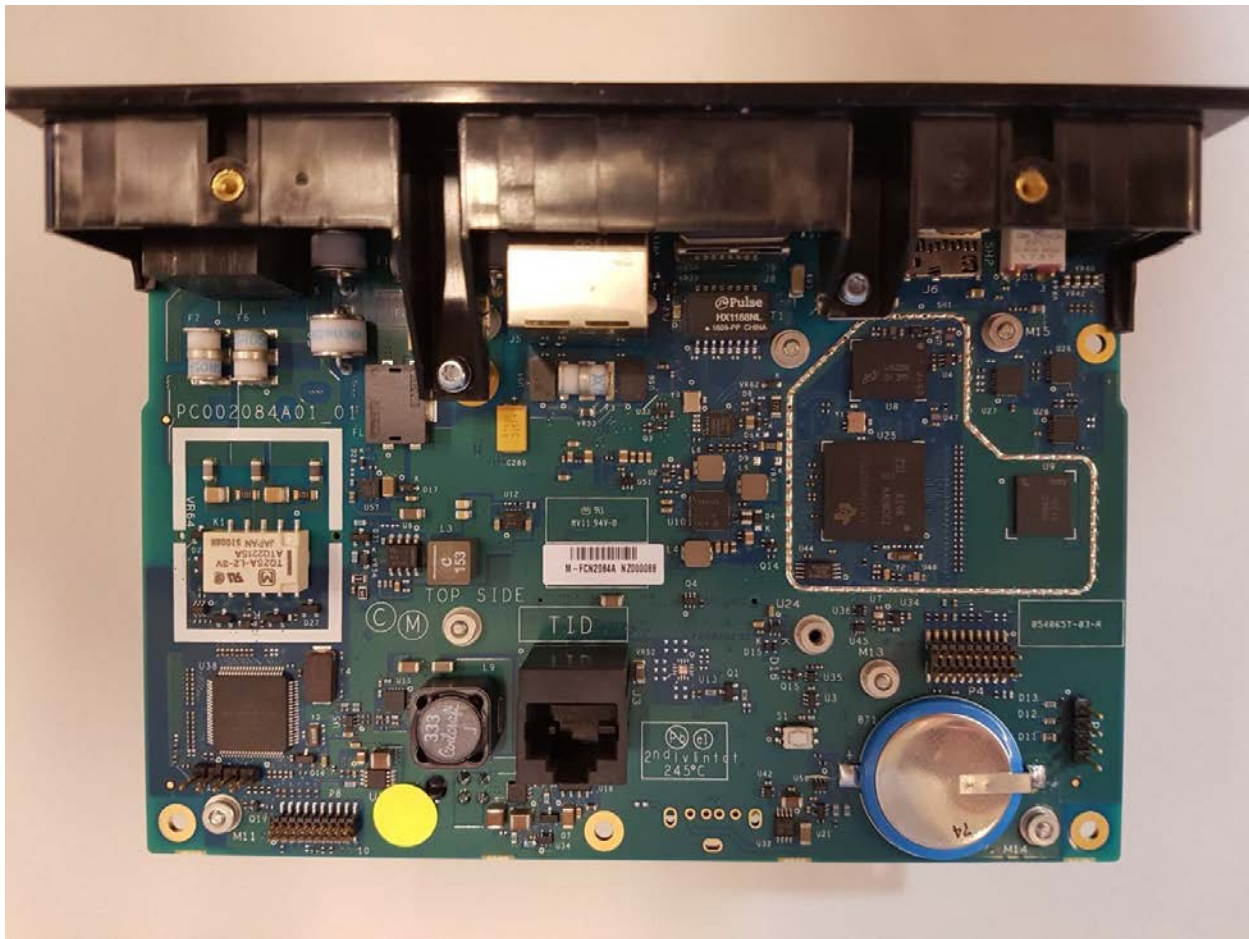
INTERNAL VIEW



INTERNAL CPU & PIGGY BOARD  
(APX4000 UHF 2 INSTALLED WITH LORA & LTE)

**MC-EDGE Overall Front Panel Inside View**

**EXHIBIT 9B**



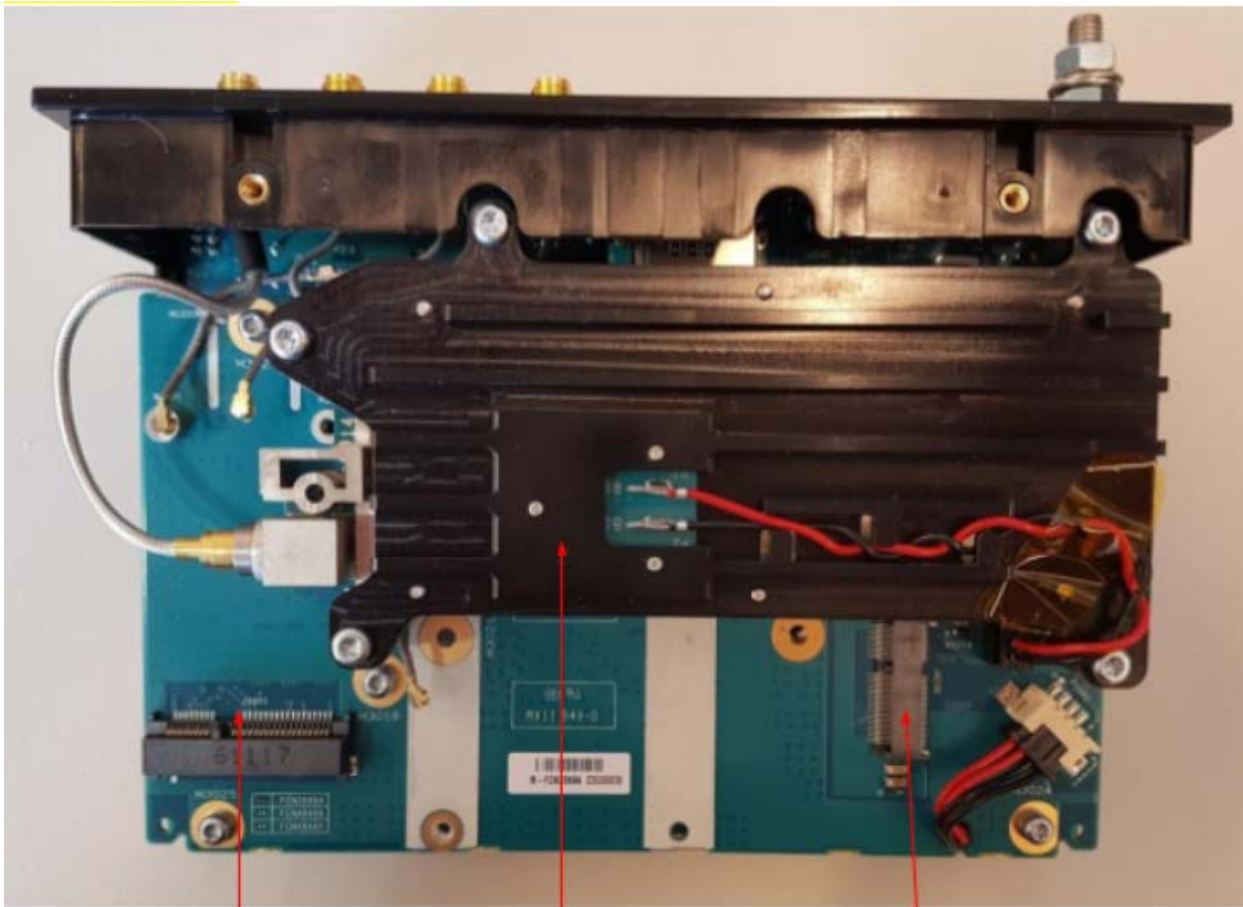
**MC-EDGE CPU Board Top View With Front Panel**

**EXHIBIT 9C**



**MC-EDGE CPU Board Top View Without Front Panel**

**EXHIBIT 9D**



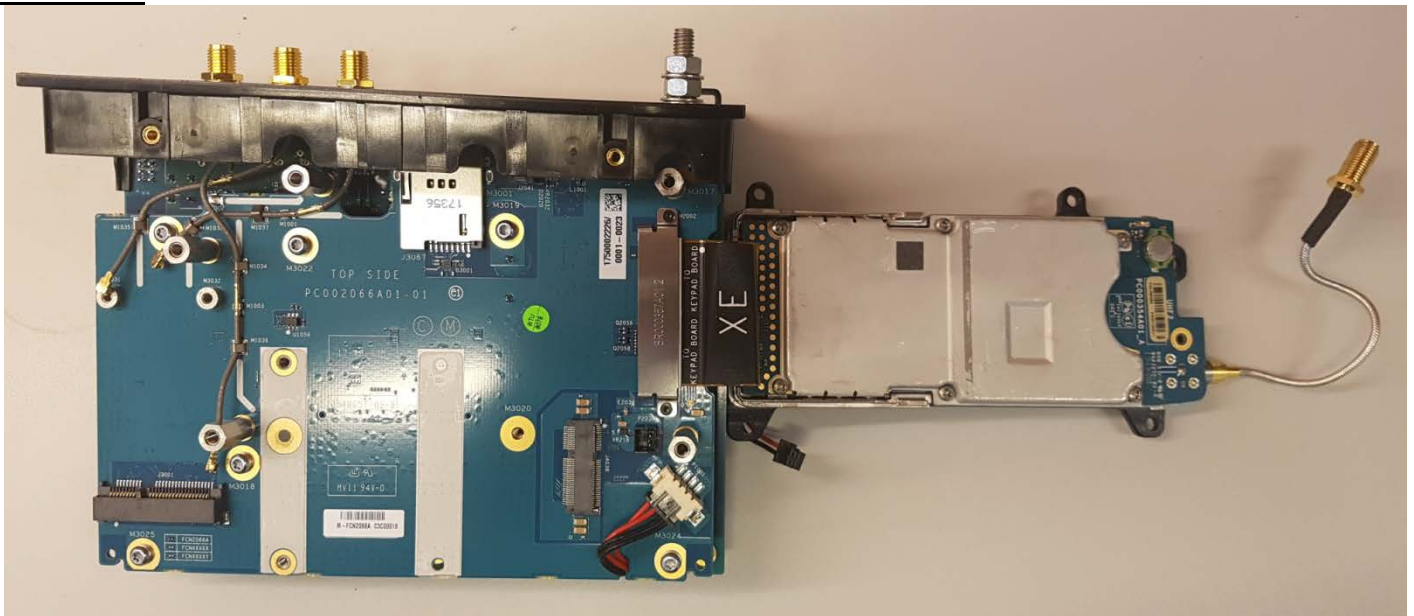
LTE Module removed  
LTE Module connector

APX UHF 2  
Installed

LoRA Module removed  
LoRA Module connector

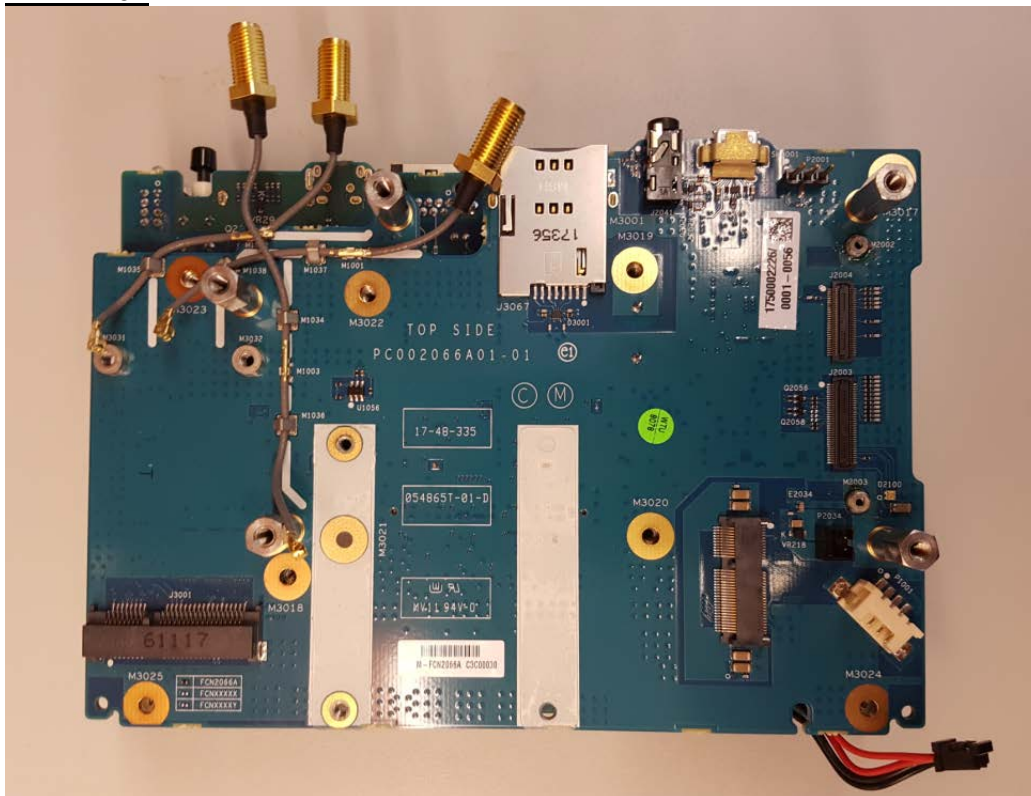
**MC-EDGE Piggy Board Top View With Front Panel (APX4000 UHF 2 Installed)**

**EXHIBIT 9E**



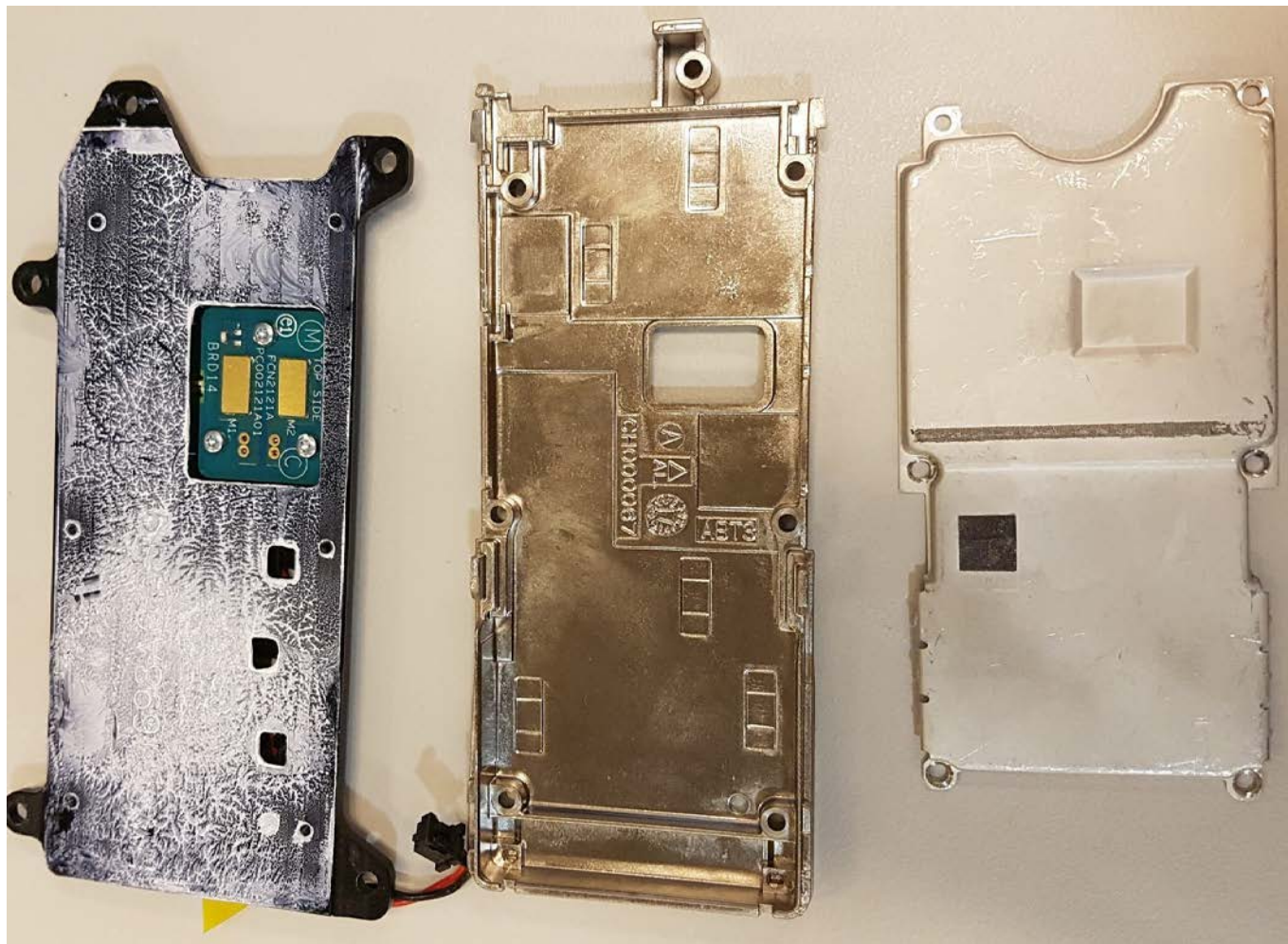
**MC-EDGE Piggy Board Top View With Front Panel (APX4000 UHF 2 Flipped Over)**

**EXHIBIT 9F**



**MC-EDGE Piggy Board Top View Without Front Panel (APX4000 UHF 2 Removed)**

**EXHIBIT 9G**



**MC-EDGE APX4000 UHF 2 Heatsink assembly view**

**EXHIBIT 9H**



**APX4000 UHF 2 Board Without and With Shields (Top)**

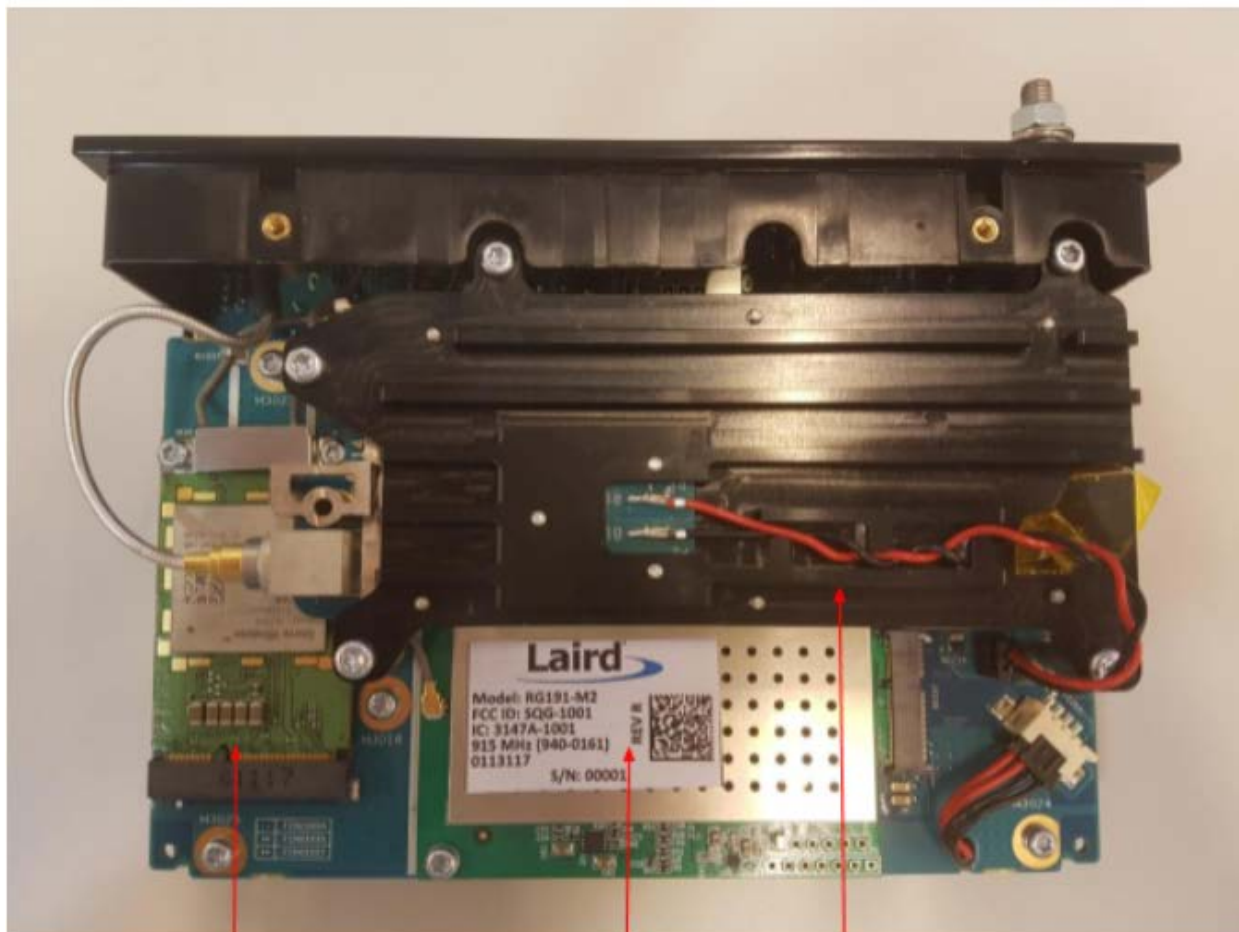


**EXHIBIT 9I**



**APX4000 UHF 2 Board Without and With Shields (Bottom)**

**EXHIBIT 9J**



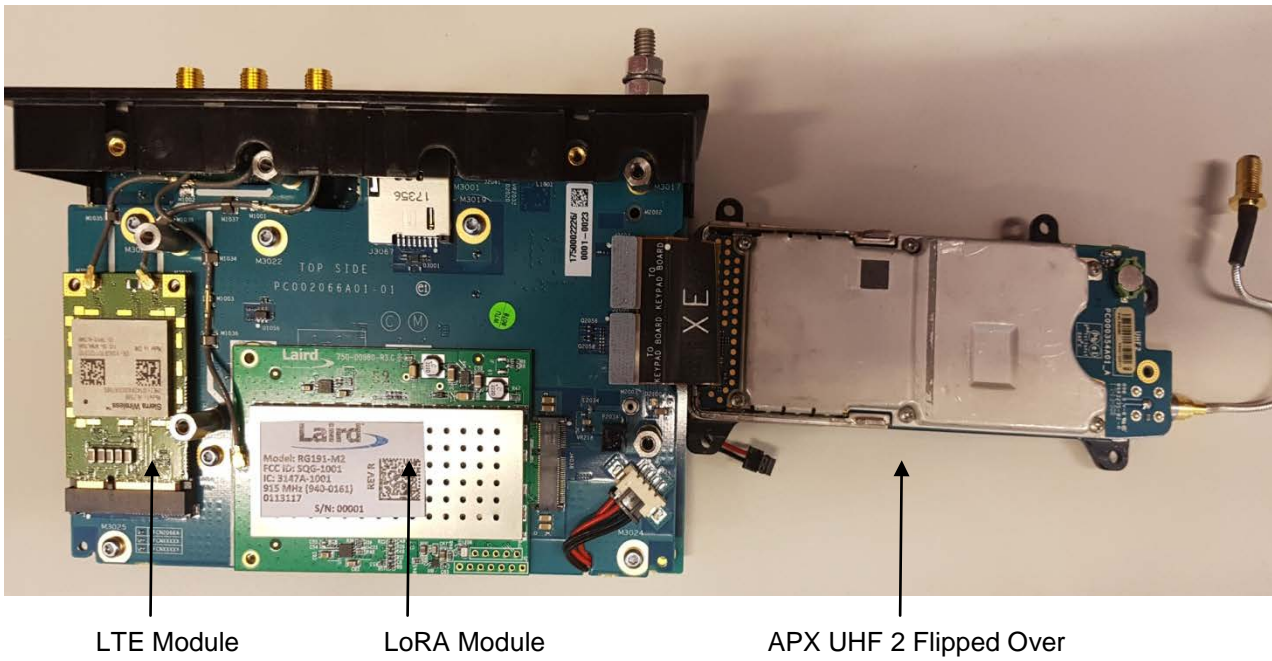
LTE Module  
Installed

LoRA Module  
Installed

UHF 2  
Installed

**MC-EDGE Piggy Board Top View With Front Panel (APX4000 UHF 2 Installed, with LORA and LTE)**

**EXHIBIT 9K**



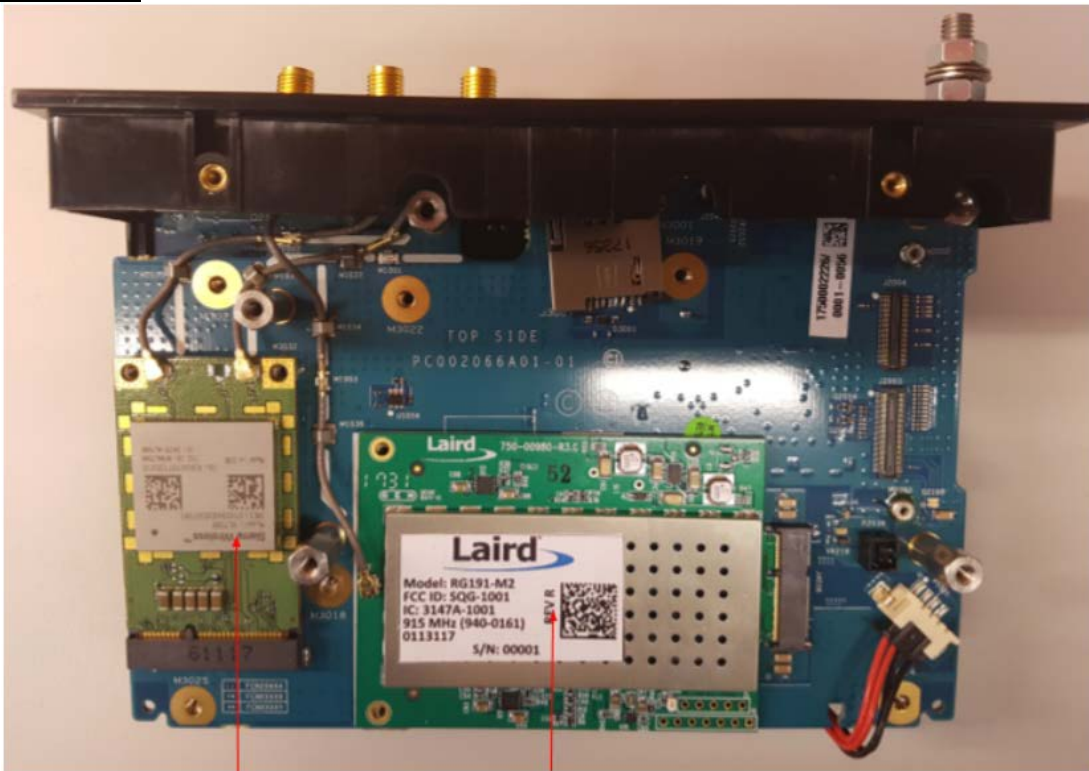
LTE Module

LoRA Module

APX UHF 2 Flipped Over

**MC-EDGE Piggy Board Top View With Front Panel (APX4000 UHF 2 Flipped over, with LORA and LTE)**

**EXHIBIT 9L**

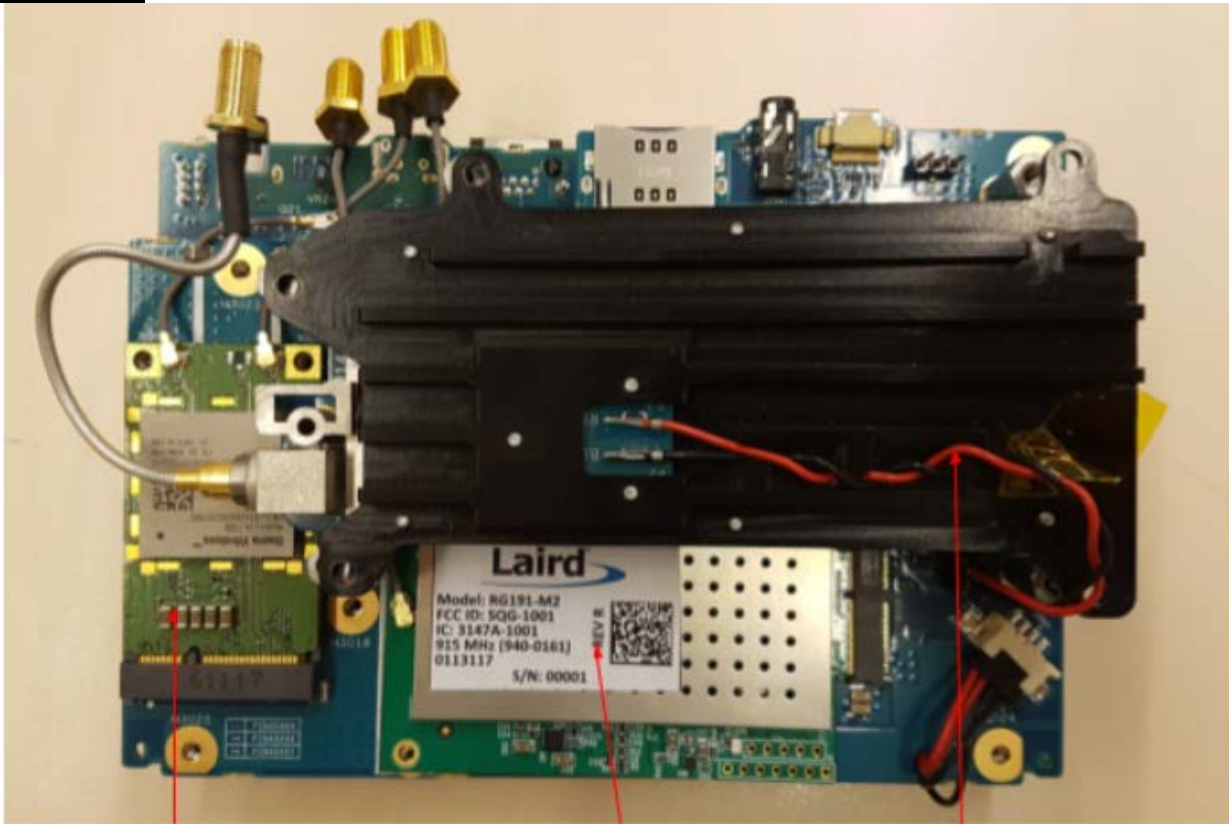


LTE Module

LoRA Module

**MC-EDGE Piggy Board Top View With Front Panel (APX4000 UHF 2 Removed, with LORA and LTE)**

**EXHIBIT 9M**



LTE Module

LoRA Module

APX UHF 2

MC-EDGE Piggy Board Top View (APX4000 UHF 2 Installed, with LORA and LTE) without Front Panel

**EXHIBIT 9N**



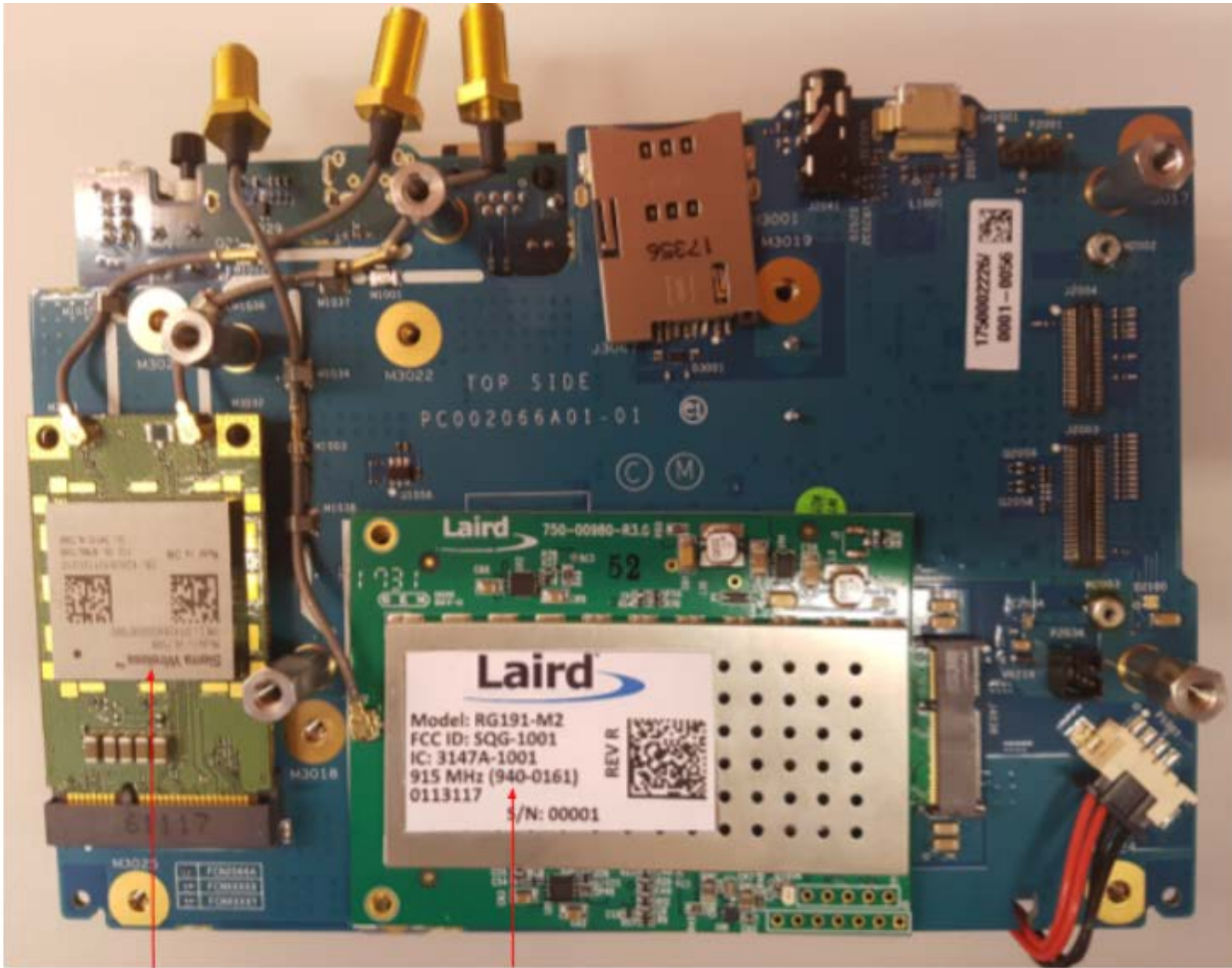
LTE Module

LoRA Module

APX UHF 2 Flipped Over

**MC-EDGE Piggy Board Top View (APX4000 UHF 2 Flipped over, with LORA and LTE) Without Front Panel**

**EXHIBIT 90**

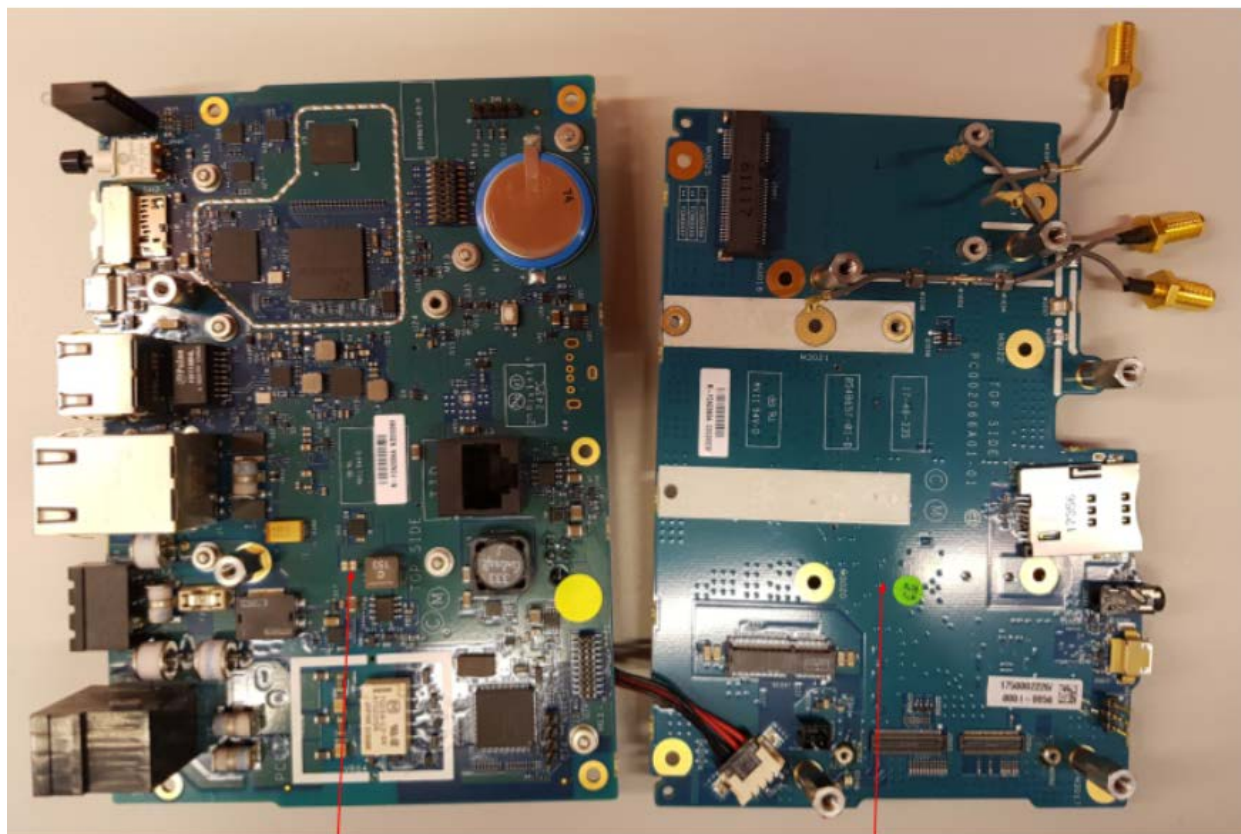


LTE Module

LoRA Module

MC-EDGE Piggy Board Top View (APX4000 UHF 2 Removed, with LORA and LTE) Without Front Panel

**EXHIBIT 9P**

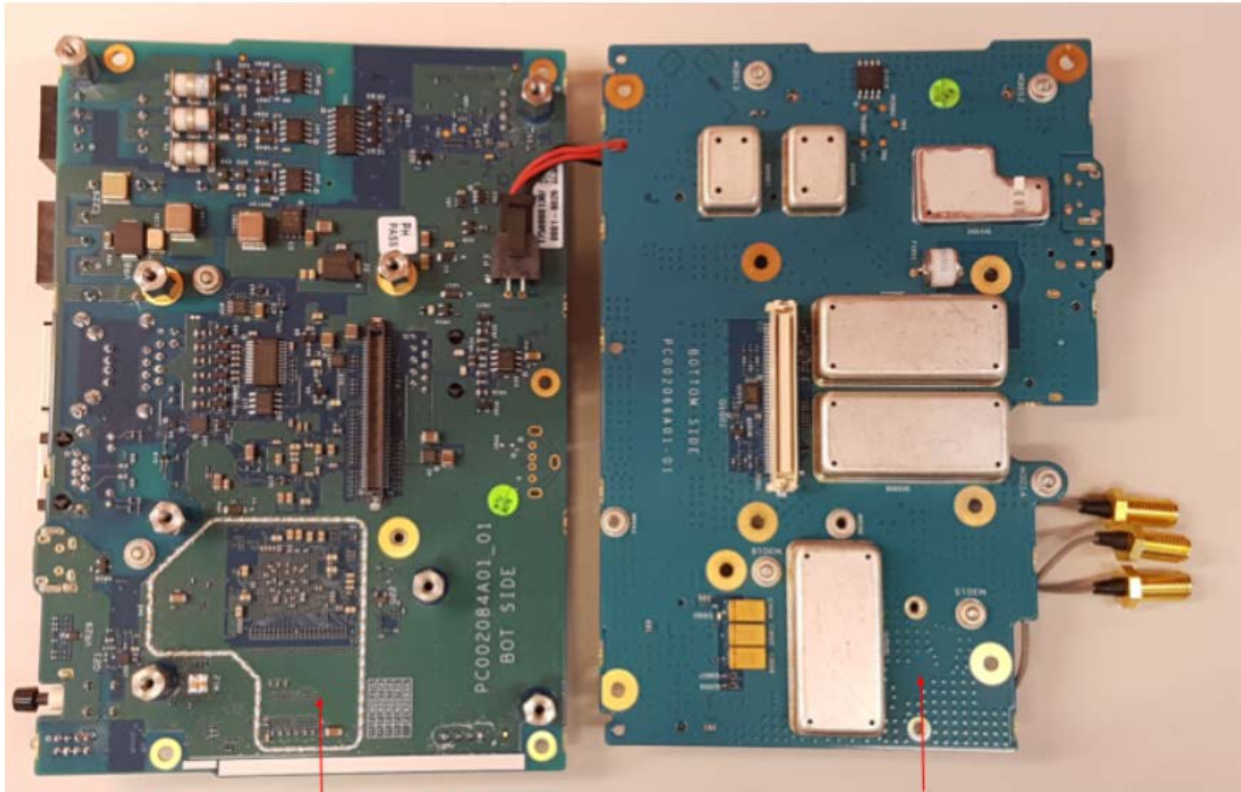


CPU board top view

Piggy board top view

**CPU Board Top View and Piggy Board Top View**

**EXHIBIT 9Q**



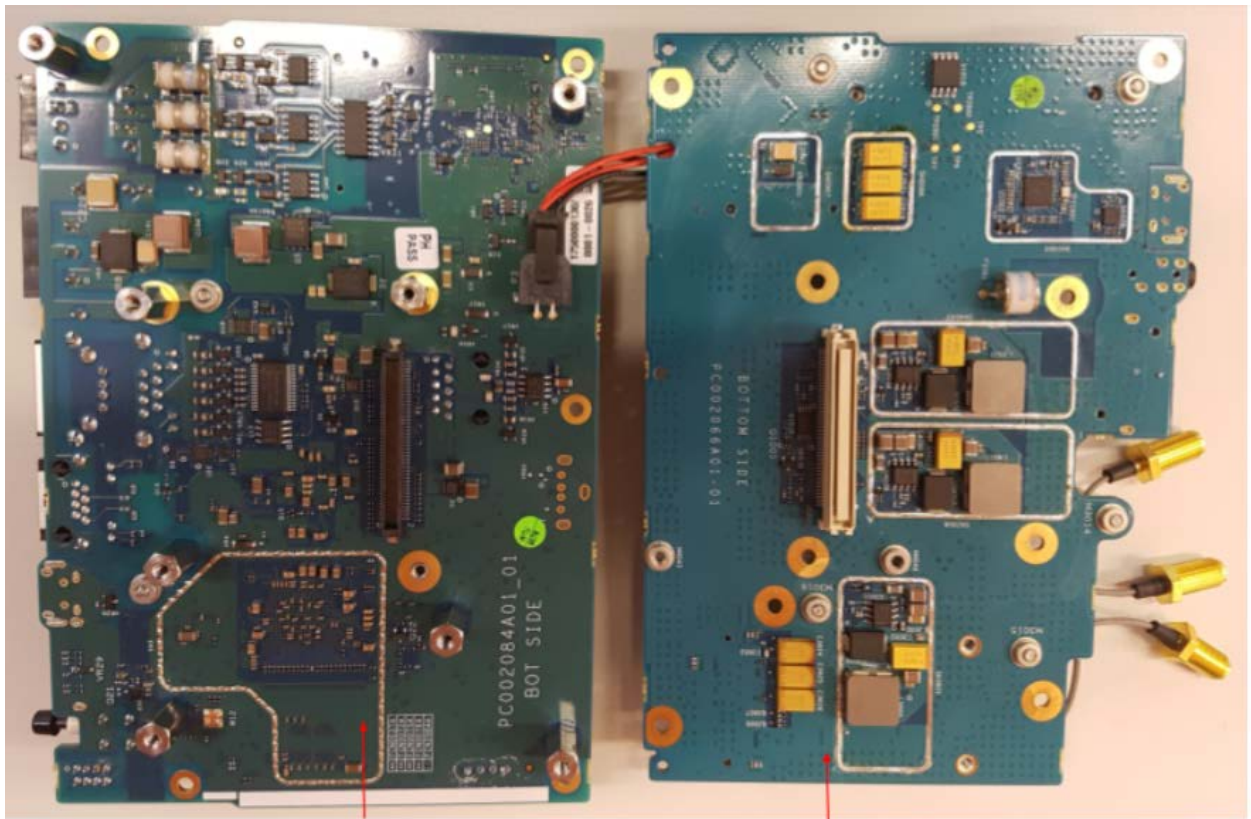
CPU board bottom view

Piggy board bottom view

**CPU Board Bottom View and Piggy Board Bottom View With Shields**



**EXHIBIT 9R**

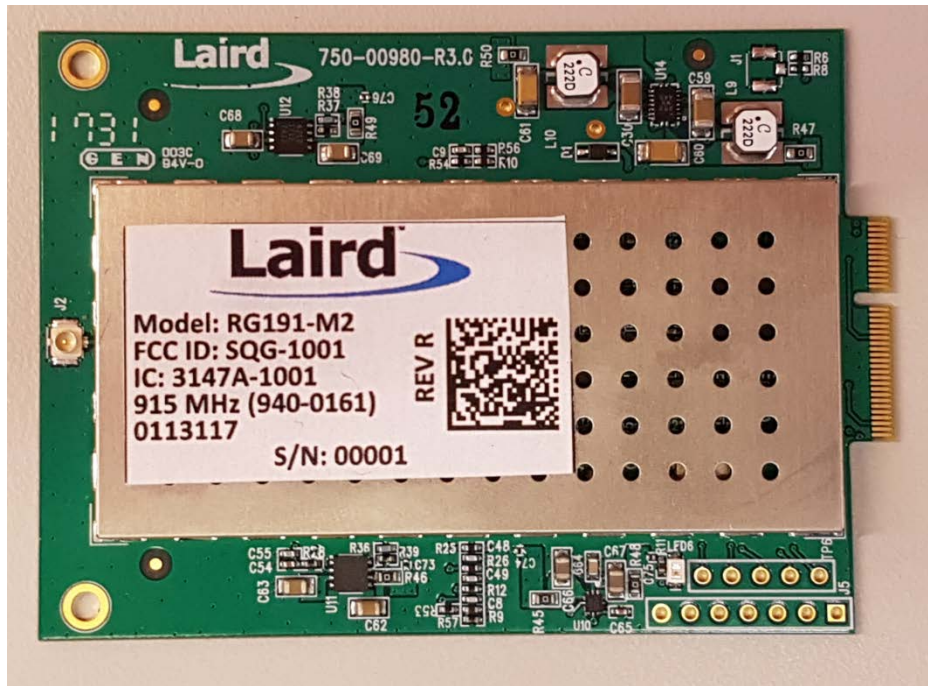


CPU board bottom view

Piggy board bottom view  
without shields

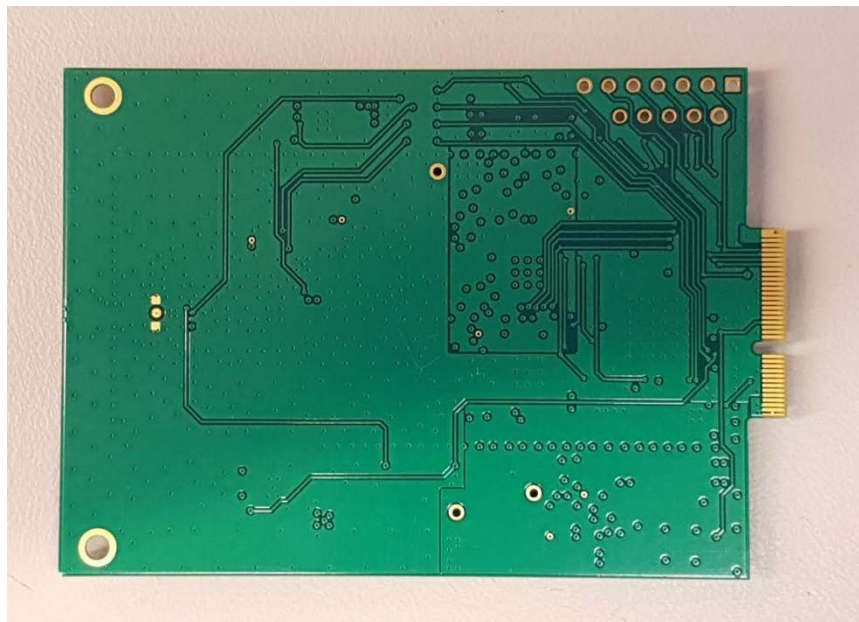
**CPU Board Bottom View and Piggy Board Bottom View Without Shields**

**EXHIBIT 9S**



**LoRa MODULE Front View**

**EXHIBIT 9T**



**LoRa MODULE Back View**

**EXHIBIT 9U**



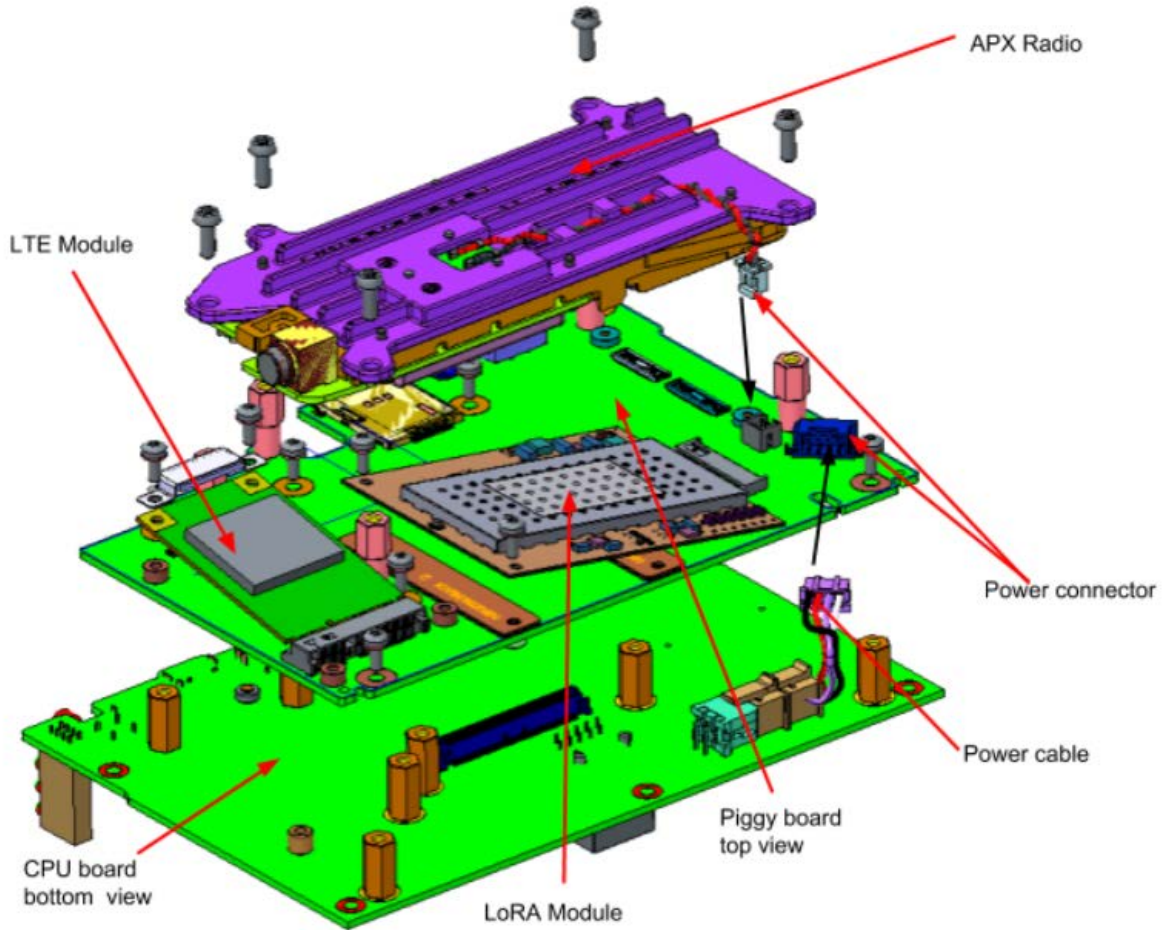
**LTE MODULE Front View**

**EXHIBIT 9V**



**LTE MODULE Back View**

**EXHIBIT 9W**



**Exploded View**