

EXHIBIT 9**INTERNAL PHOTOGRAPHS**

(Pursuant to FCC Part 2.1033(b)(7), 2.1033(c)(12) and RSP 100 Sec 8.3)

The following photographs are attached.

Exhibit

1. MC-EDGE Overall Front Panel Inside View	9A
2. MC-EDGE CPU Board Top View With Front Panel	9B
3. MC-EDGE CPU Board Top View Without Front Panel	9C
4. MC-EDGE Piggy Board Top View With Front Panel (APX4000 UHF 1 Installed)	9D
5. MC-EDGE Piggy Board Top View With Front Panel (APX4000 UHF 1 Flipped over)	9E
6. MC-EDGE Piggy Board Top View Without Front Panel (APX4000 UHF 1 Removed)	9F
7. MC-EDGE APX4000 UHF 1 Heatsink assembly view	9G
8. APX4000 UHF 1 Board Without and With Shields (Top)	9H
9. APX4000 UHF 1 Board Without and With Shields (Bottom)	9I
10. MC-EDGE Piggy Board Top View With Front Panel (APX4000 UHF 1 Installed, with LORA and LTE)	9J
11. MC-EDGE Piggy Board Top View With Front Panel (APX4000 UHF 1 Flipped over, with LORA and LTE)	9K
12. MC-EDGE Piggy Board Top View With Front Panel (APX4000 UHF 1 Removed, with LORA and LTE)	9L
13. MC-EDGE Piggy Board Top View (APX4000 UHF 1 Installed, with LORA and LTE) Without Front Panel	9M
14. MC-EDGE Piggy Board Top View (APX4000 UHF 1 Flipped over, with LORA and LTE) Without Front Panel	9N
15. MC-EDGE Piggy Board Top View (APX4000 UHF 1 Removed, with LORA and LTE) Without Front Panel	9O
16. CPU Board Top View and Piggy Board Top View	9P
17. CPU Board Bottom View and Piggy Board Bottom View With Shields	9Q
18. CPU Board Bottom View and Piggy Board Bottom View Without Shields	9R
19. LoRA MODULE Front View	9S
20. LoRA MODULE Back View	9T
21. LTE MODULE Front View	9U
22. LTE MODULE Back View	9V
23. Exploded View	9W

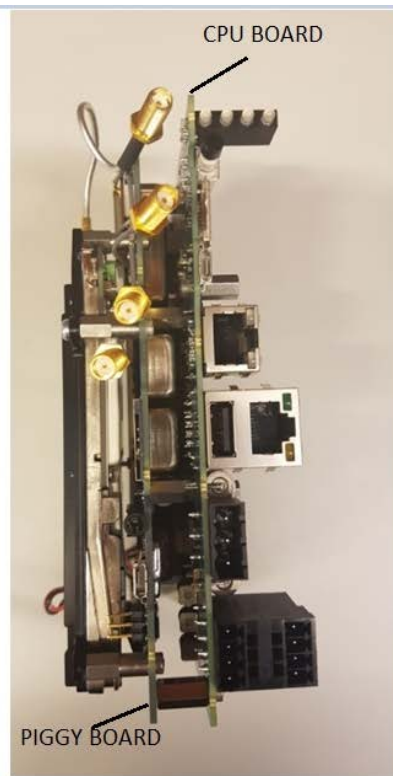
EXHIBIT 9A



FRONT PANEL COVER



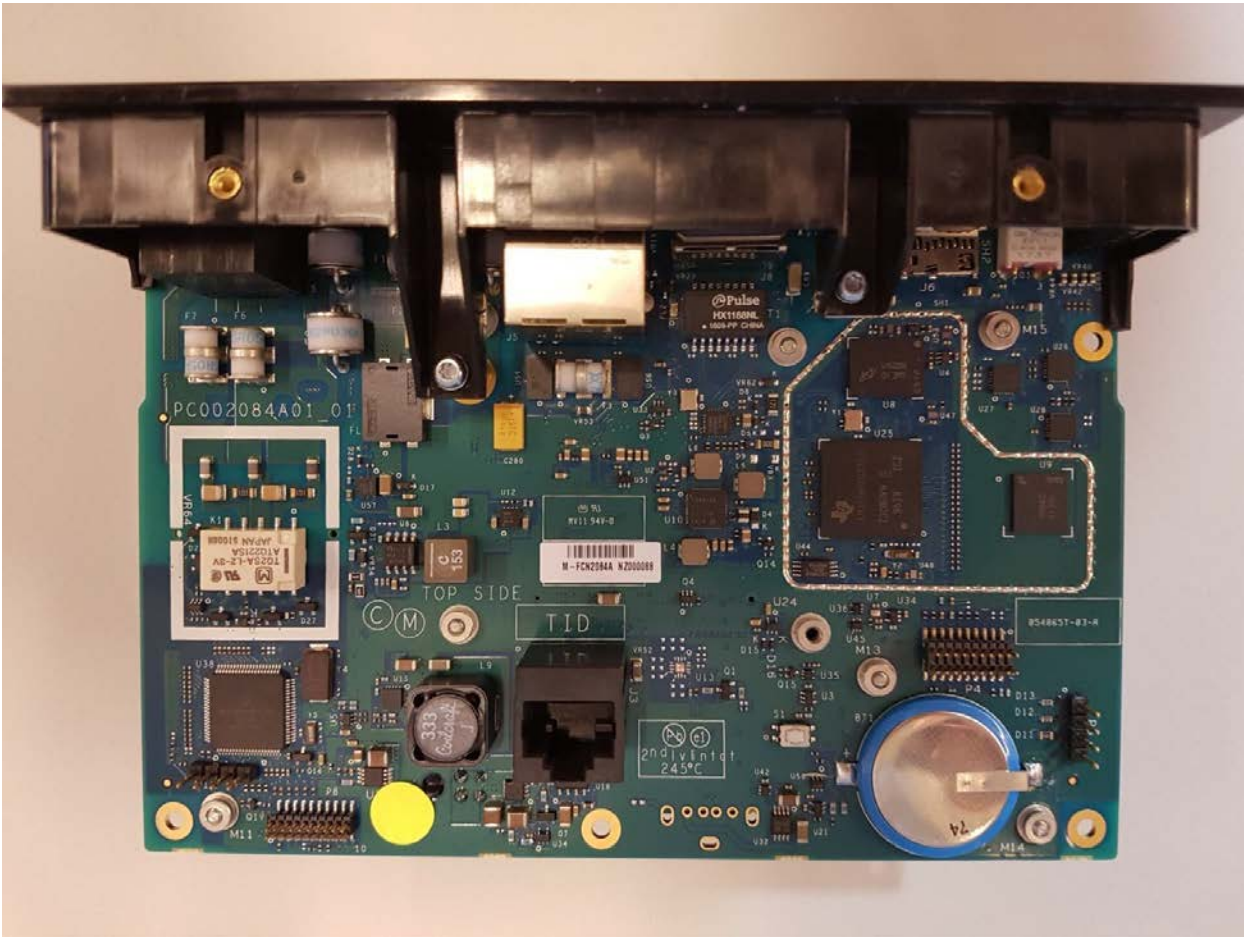
INTERNAL VIEW



INTERNAL CPU & PIGGY BOARD
(APX4000 UHF 1 INSTALLED WITH
LORA & LTE)

MC-EDGE Overall Front Panel Inside View

EXHIBIT 9B



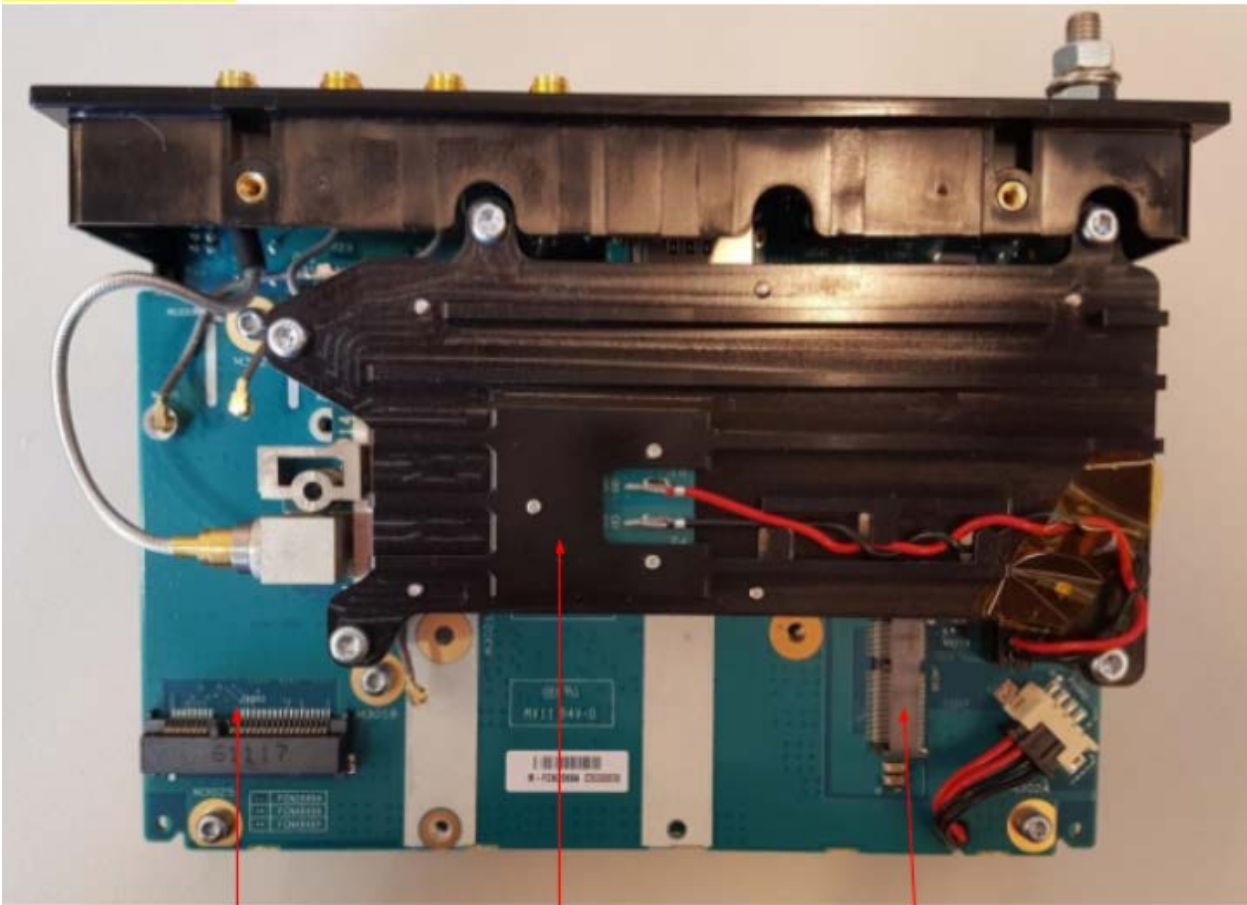
MC-EDGE CPU Board Top View With Front Panel

EXHIBIT 9C



MC-EDGE CPU Board Top View Without Front Panel

EXHIBIT 9D



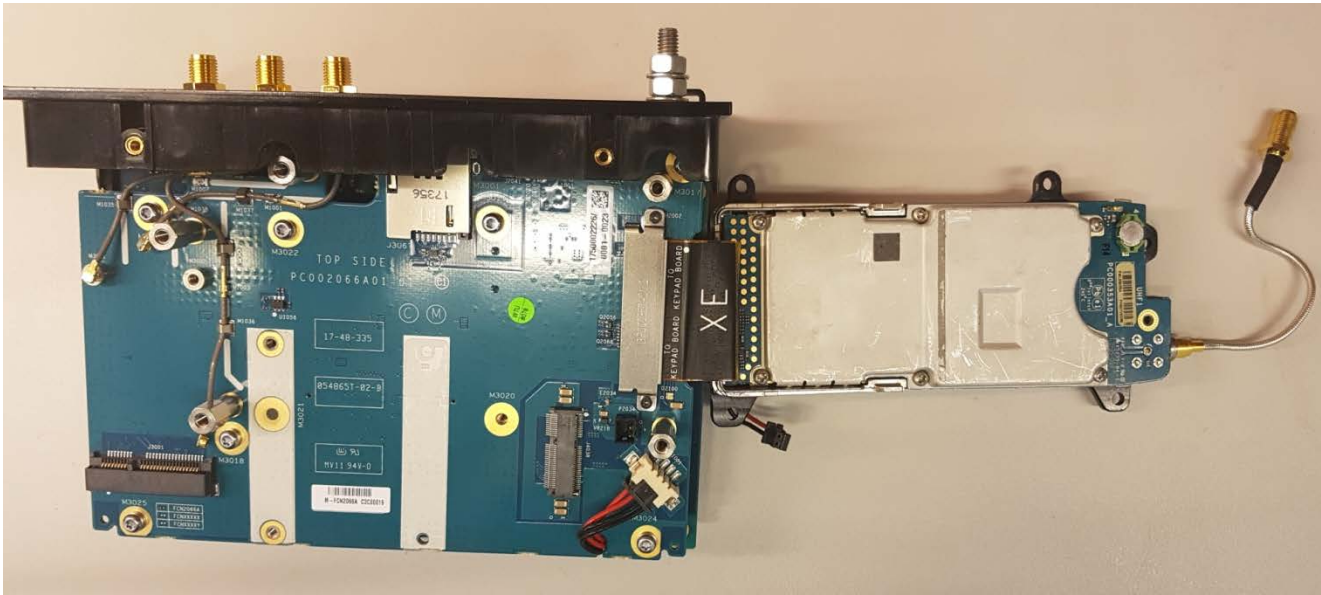
LTE Module removed
LTE Module connector

APX UHF 1
Installed

LoRA Module removed
LoRA Module connector

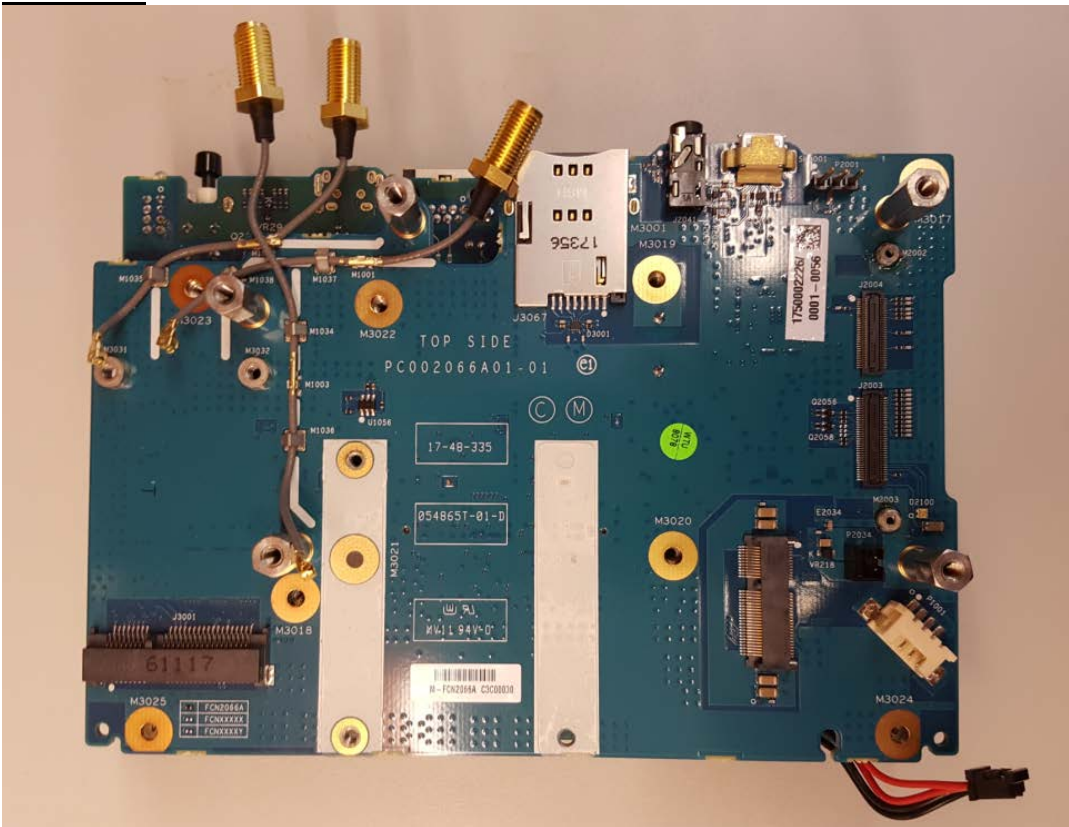
MC-EDGE Piggy Board Top View With Front Panel (APX4000 UHF 1 Installed)

EXHIBIT 9E



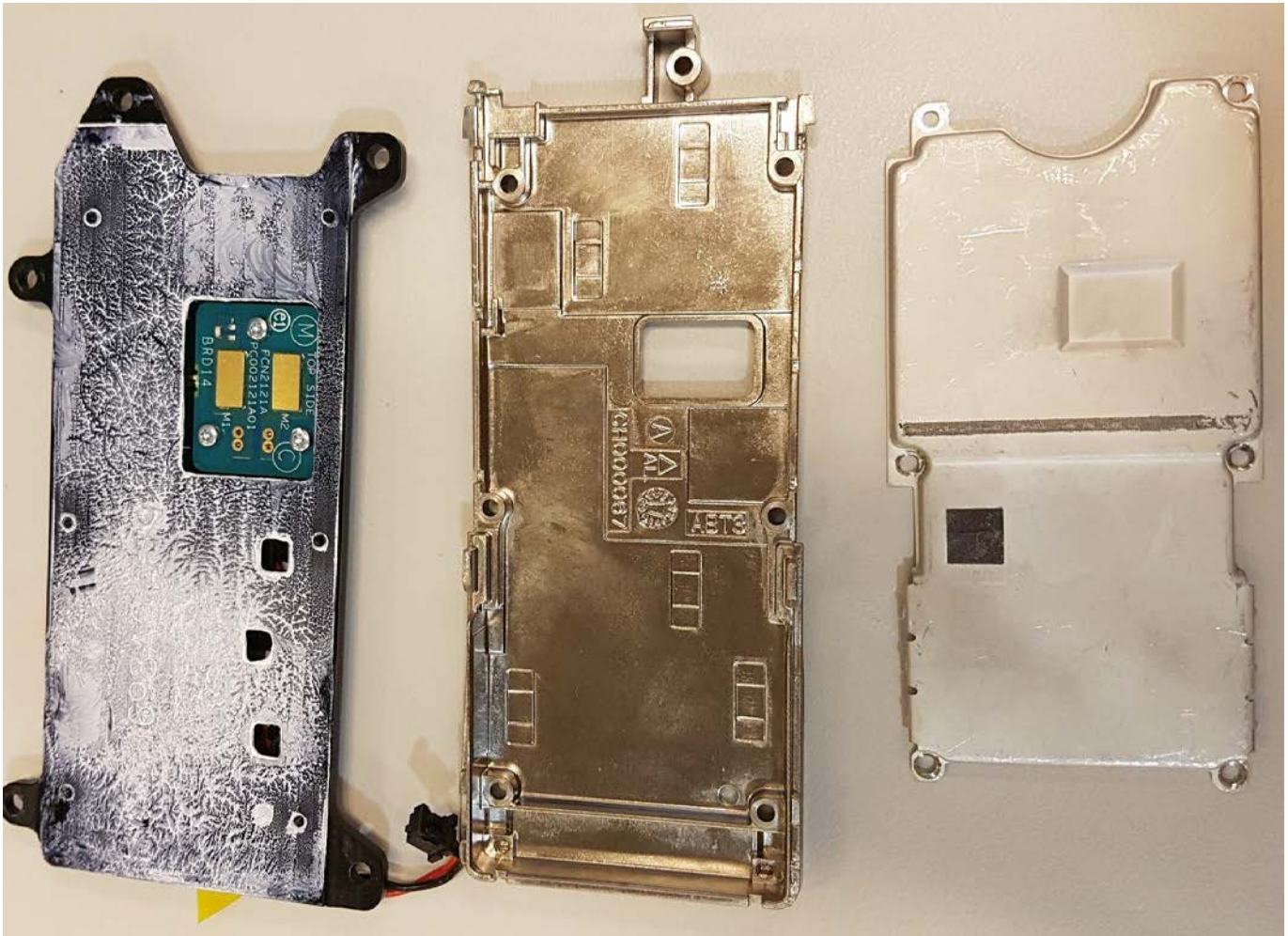
MC-EDGE Piggy Board Top View With Front Panel (APX4000 UHF 1 Flipped Over)

EXHIBIT 9F



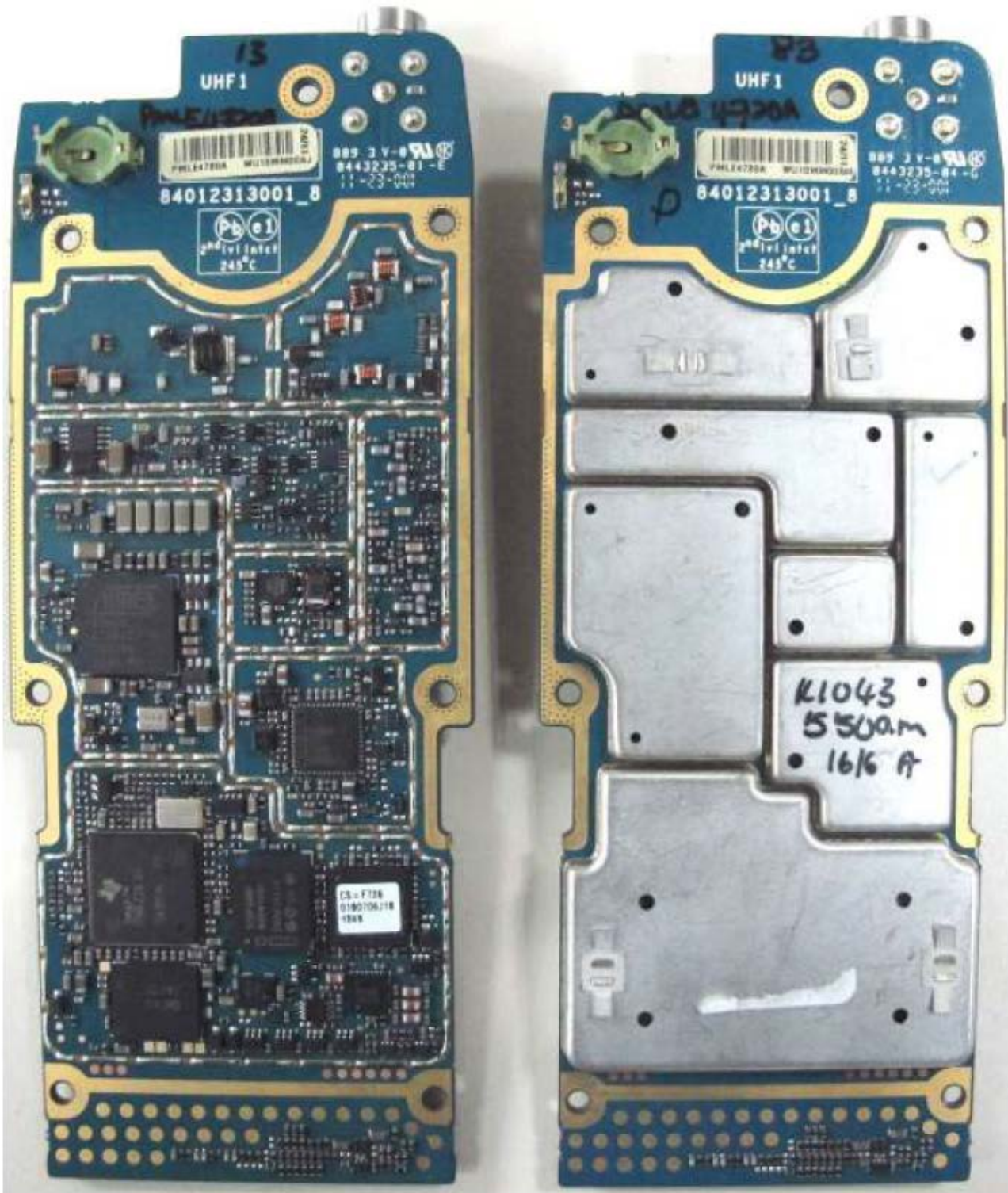
MC-EDGE Piggy Board Top View Without Front Panel (APX4000 UHF 1 Removed)

EXHIBIT 9G



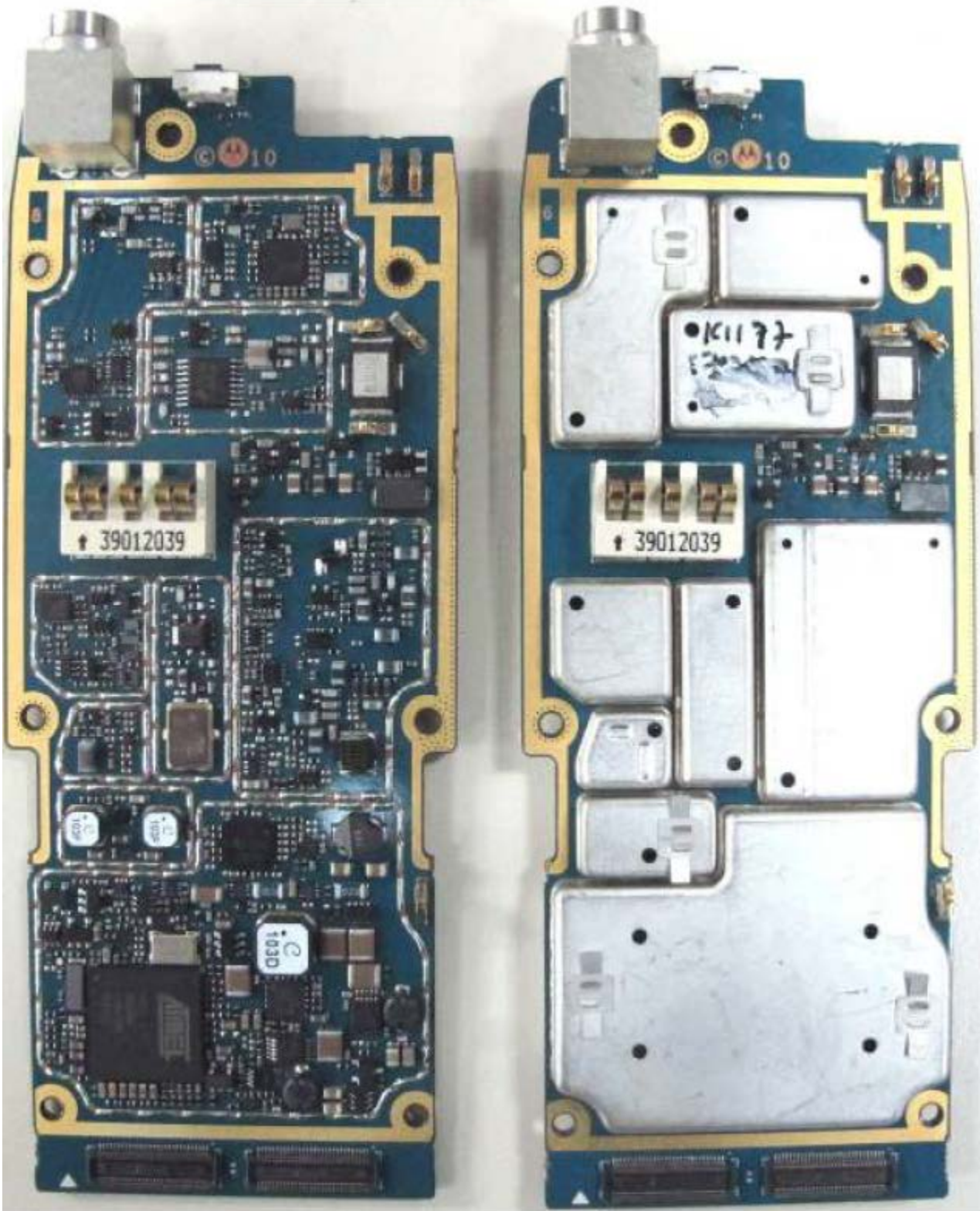
MC-EDGE APX4000 UHF 1 Heatsink assembly view

EXHIBIT 9H



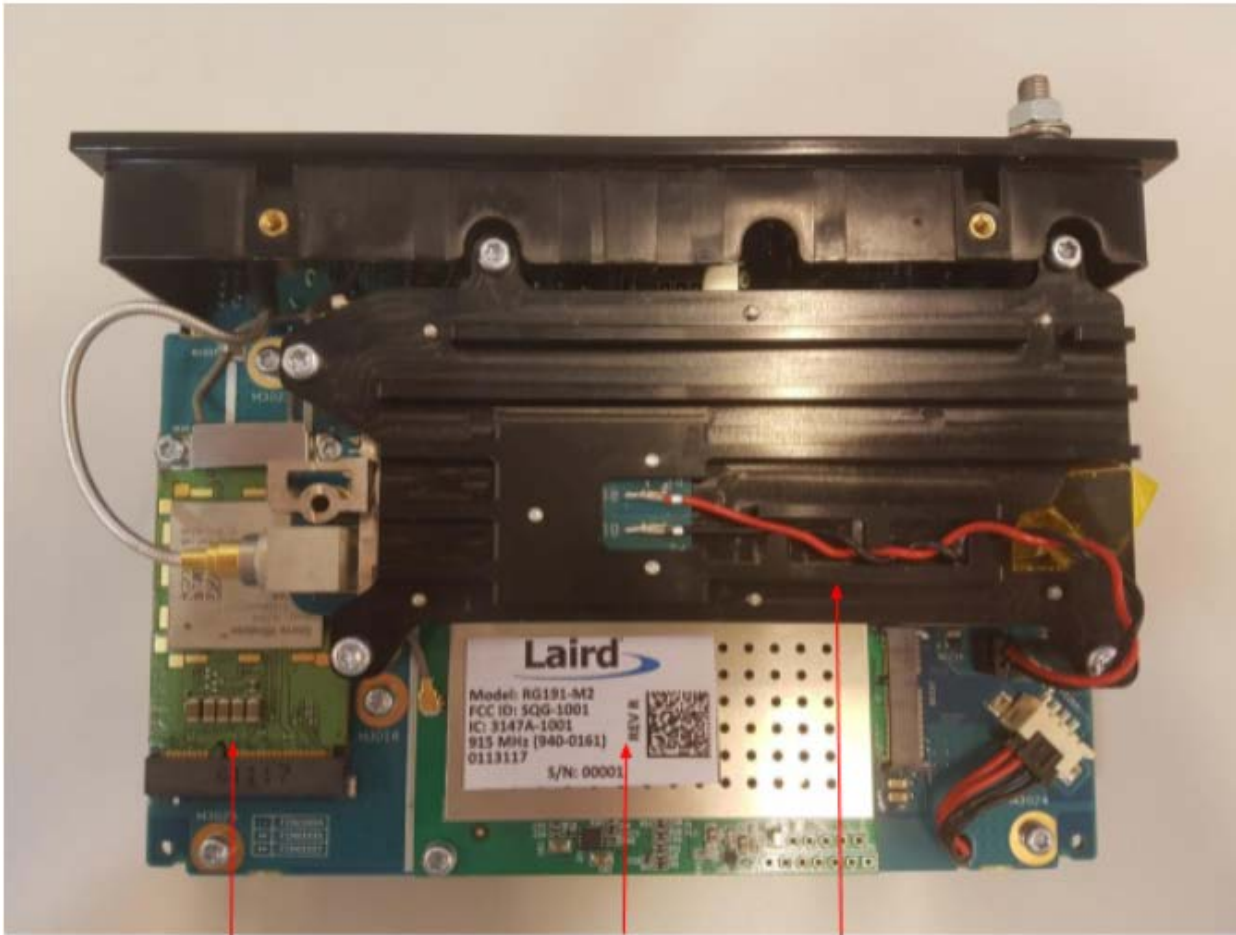
APX4000 UHF 1 Board Without and With Shields (Top)

EXHIBIT 9I



APX4000 UHF 1 Board Without and With Shields (Bottom)

EXHIBIT 9J



LTE Module
Installed

LoRA Module
Installed

UHF 1
Installed

MC-EDGE Piggy Board Top View With Front Panel (APX4000 UHF 1 Installed, with LORA and LTE)

EXHIBIT 9K



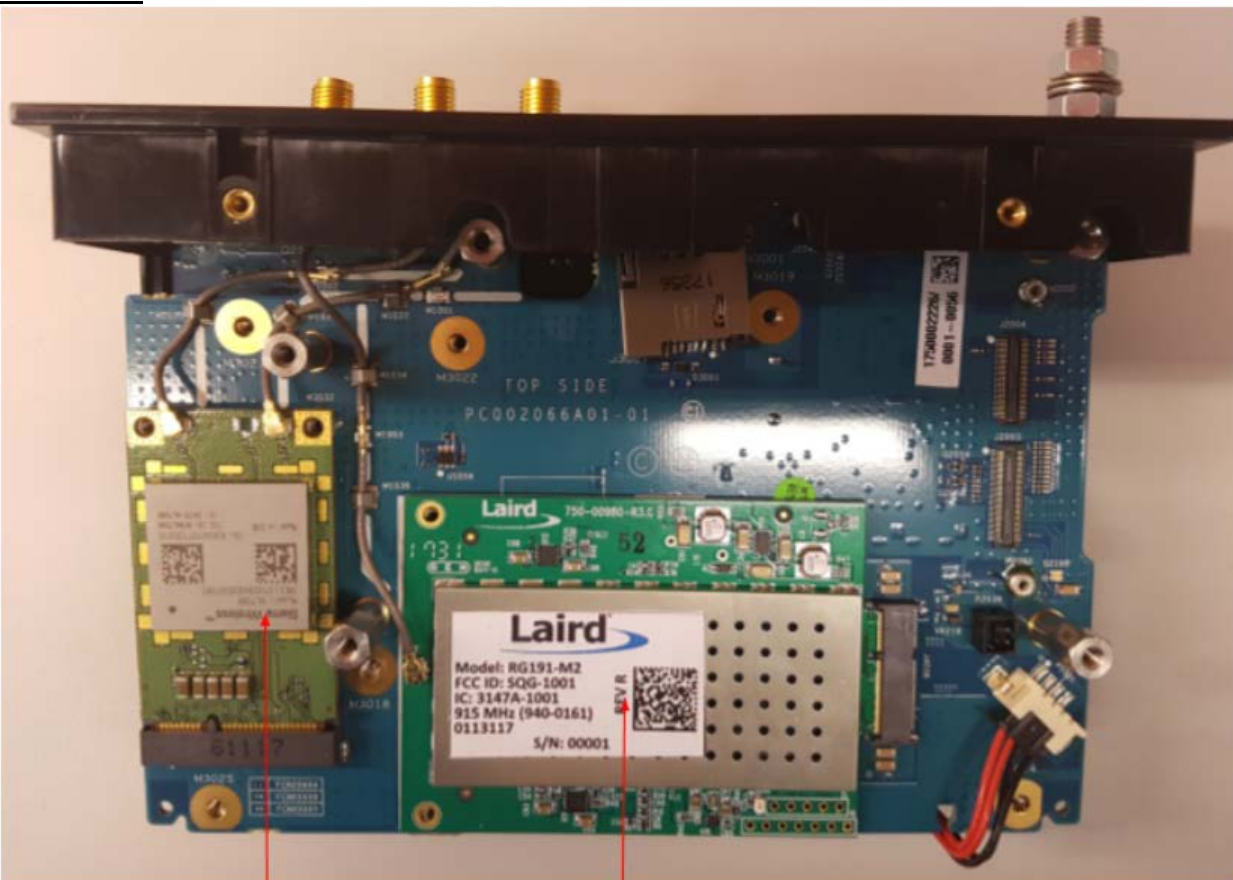
LTE Module

LoRa Module

APX UHF 1 Flipped Over

MC-EDGE Piggy Board Top View With Front Panel (APX4000 UHF 1 Flipped over, with LORA and LTE)

EXHIBIT 9L

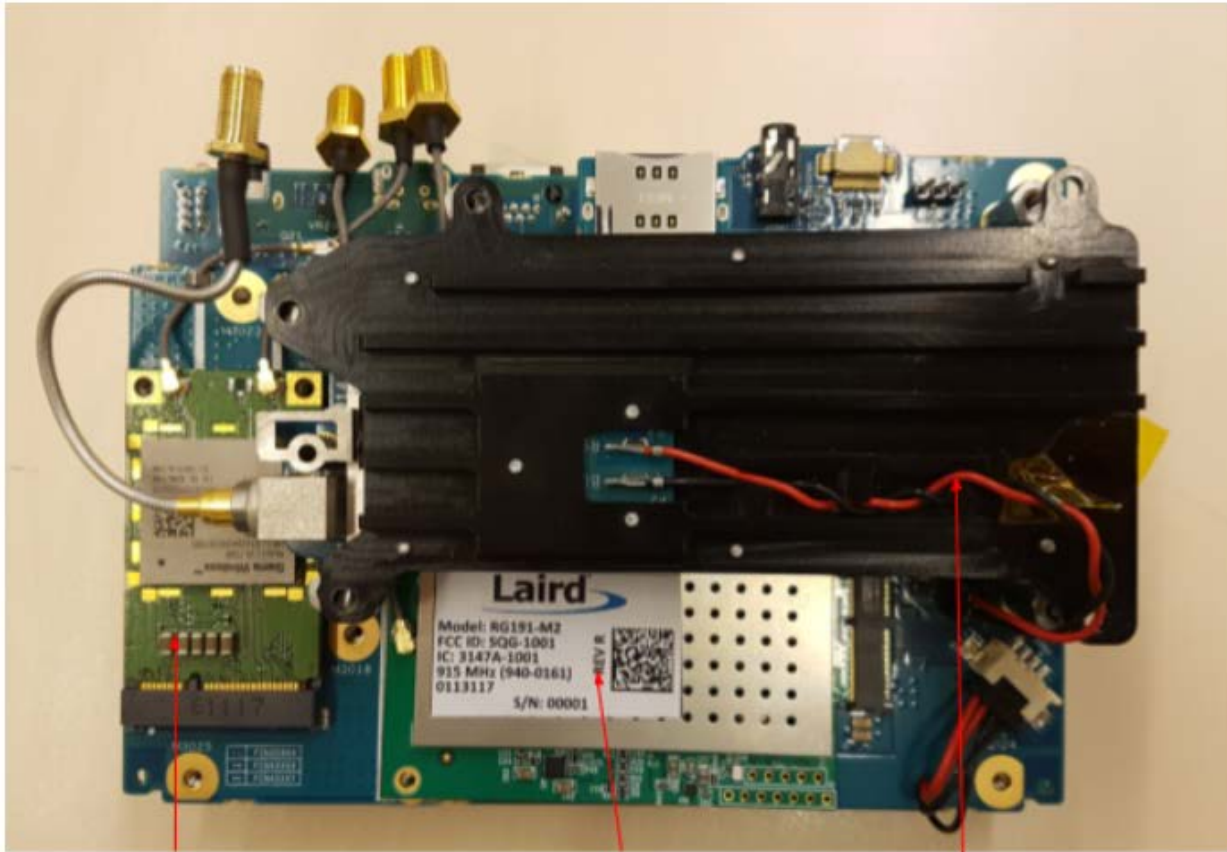


LTE Module

LoRa Module

MC-EDGE Piggy Board Top View With Front Panel (APX4000 UHF1 Removed, with LORA and LTE)

EXHIBIT 9M



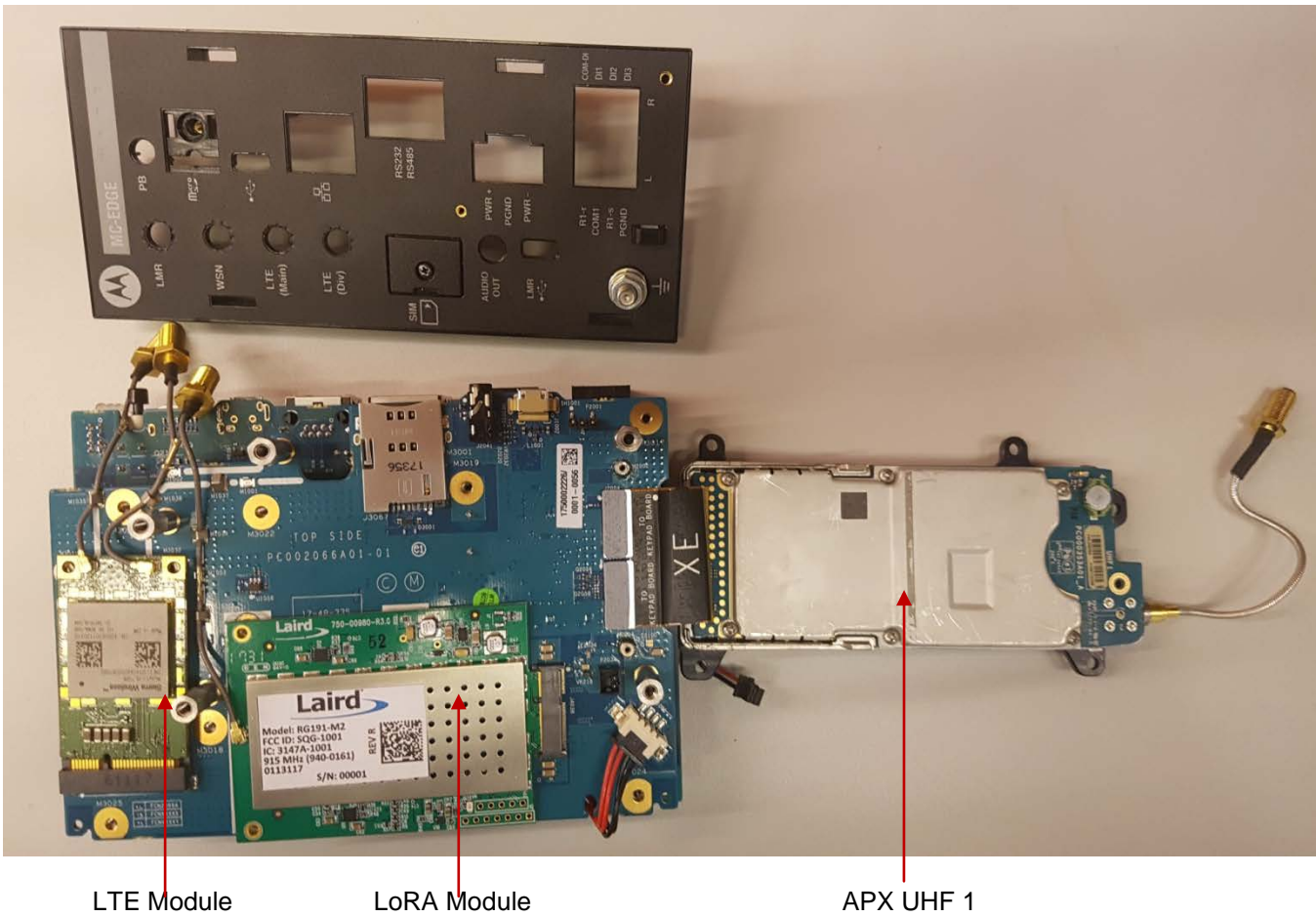
LTE Module

LoRA Module

APX UHF 1

MC-EDGE Piggy Board Top View (APX4000 UHF 1 Installed, with LORA and LTE) without Front Panel

EXHIBIT 9N



MC-EDGE Piggy Board Top View (APX4000 UHF 1 Flipped over, with LORA and LTE) Without Front Panel

EXHIBIT 90

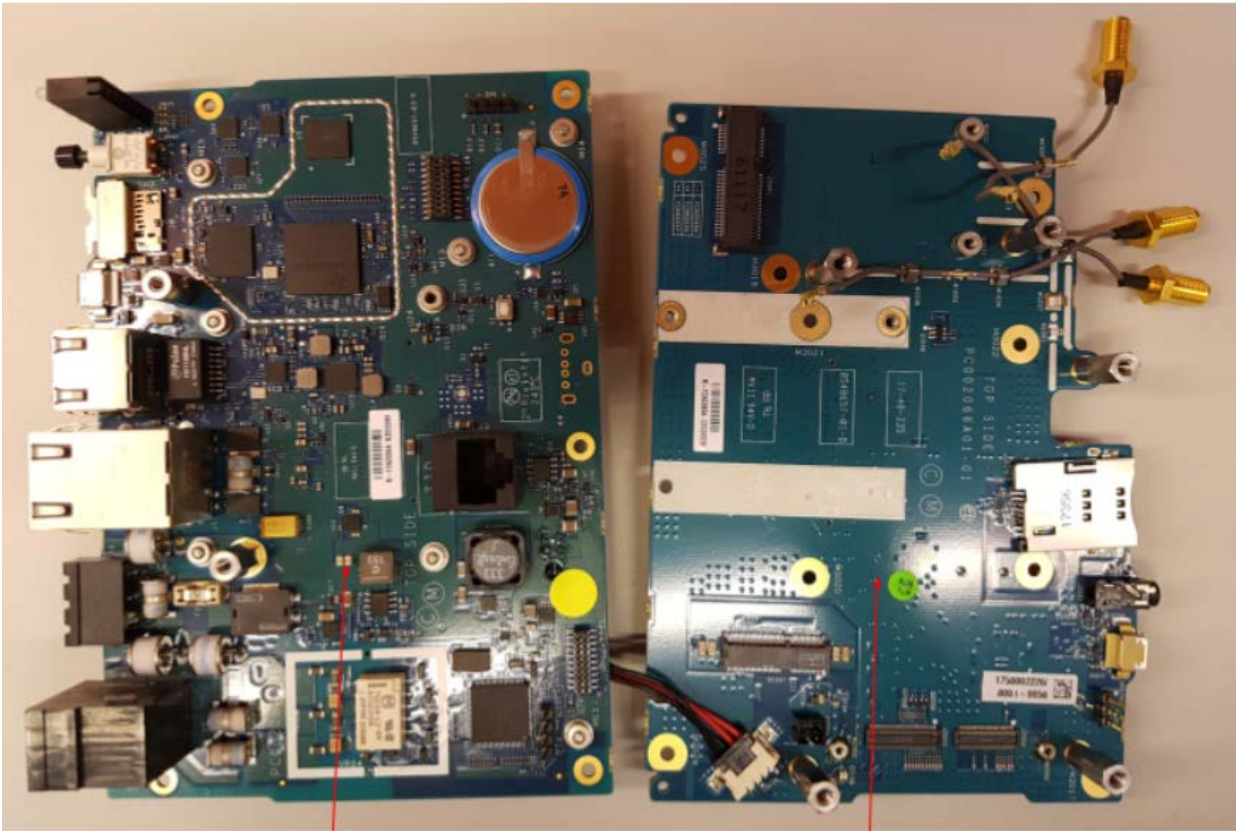


LTE Module

LoRA Module

MC-EDGE Piggy Board Top View (APX4000 UHF1 Removed, with LORA and LTE) Without Front Panel

EXHIBIT 9P

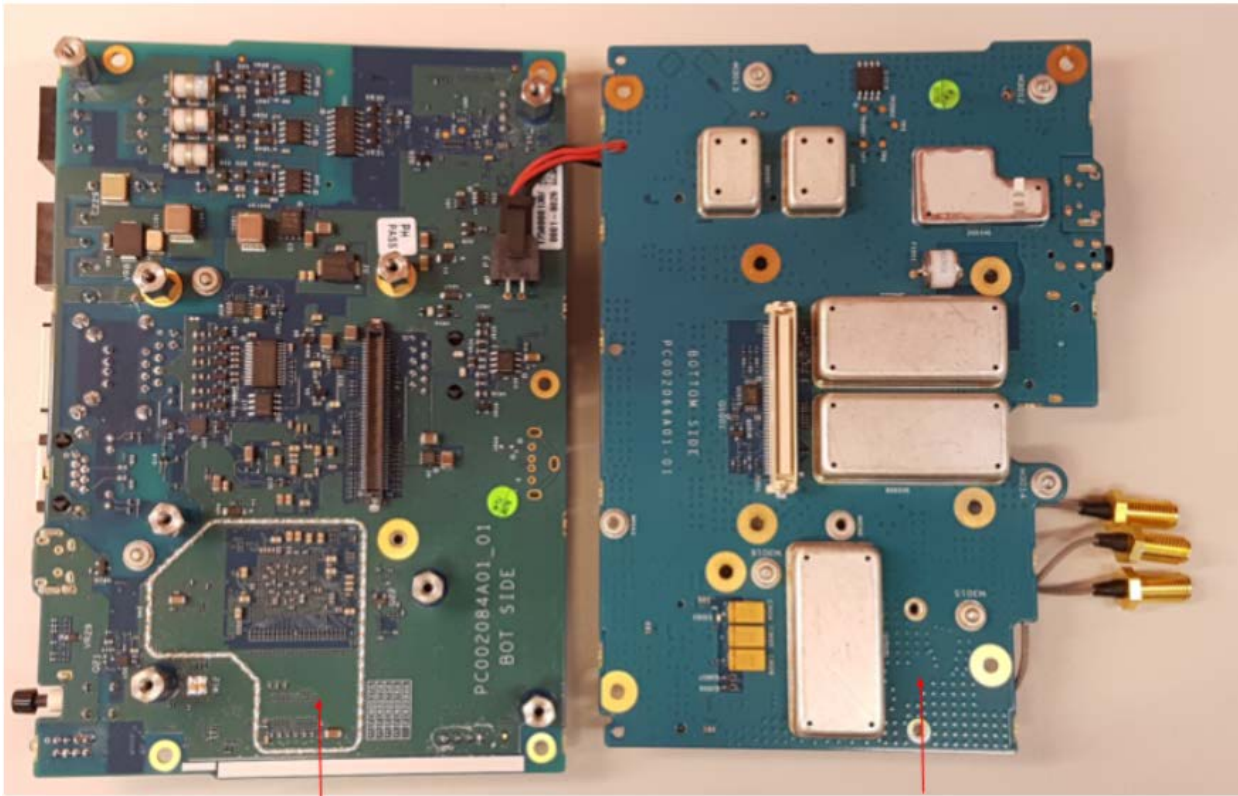


CPU board top view

Piggy board top view

CPU Board Top View and Piggy Board Top View

EXHIBIT 9Q

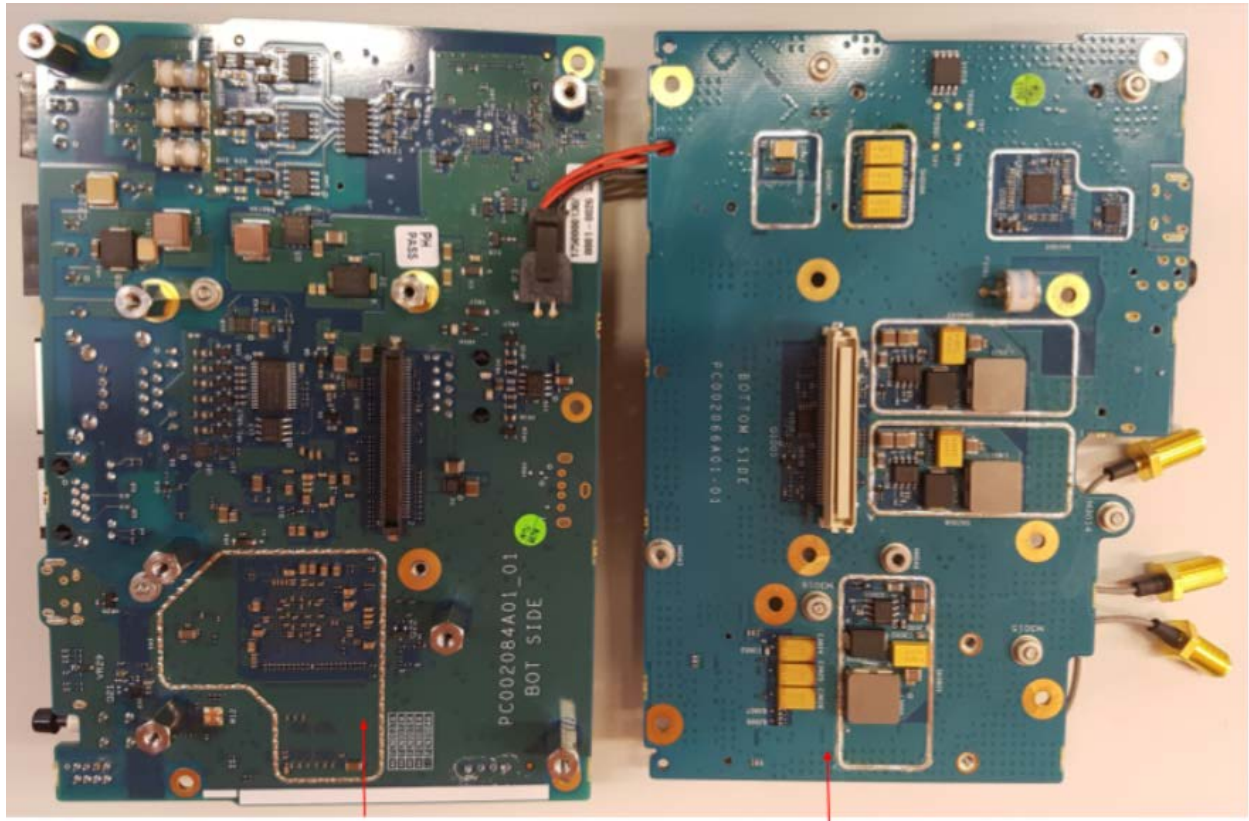


CPU board bottom view

Piggy board bottom view

CPU Board Bottom View and Piggy Board Bottom View With Shields

EXHIBIT 9R

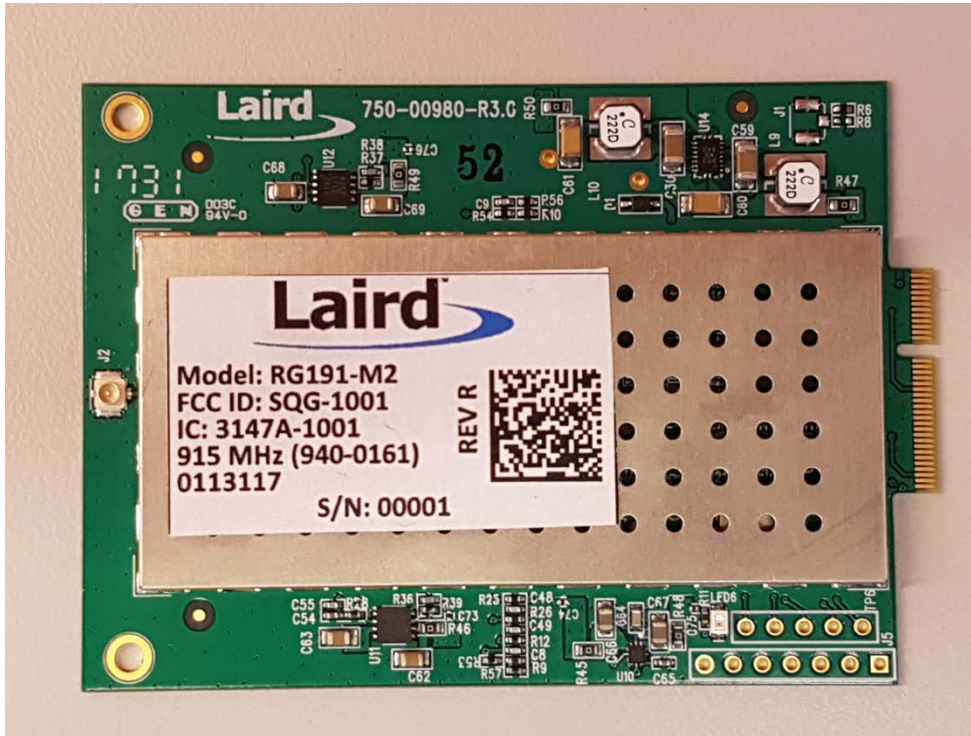


CPU board bottom view

Piggy board bottom view
without shields

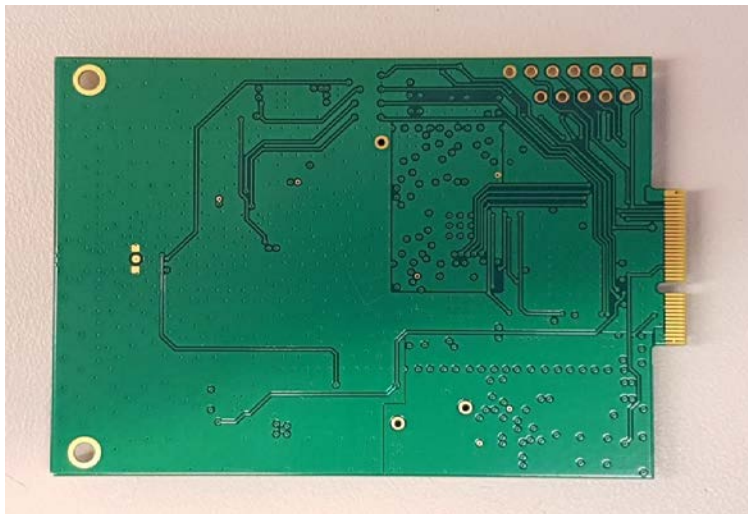
CPU Board Bottom View and Piggy Board Bottom View Without Shields

EXHIBIT 9S



LoRa MODULE Front View

EXHIBIT 9T



LoRa MODULE Back View

EXHIBIT 9U



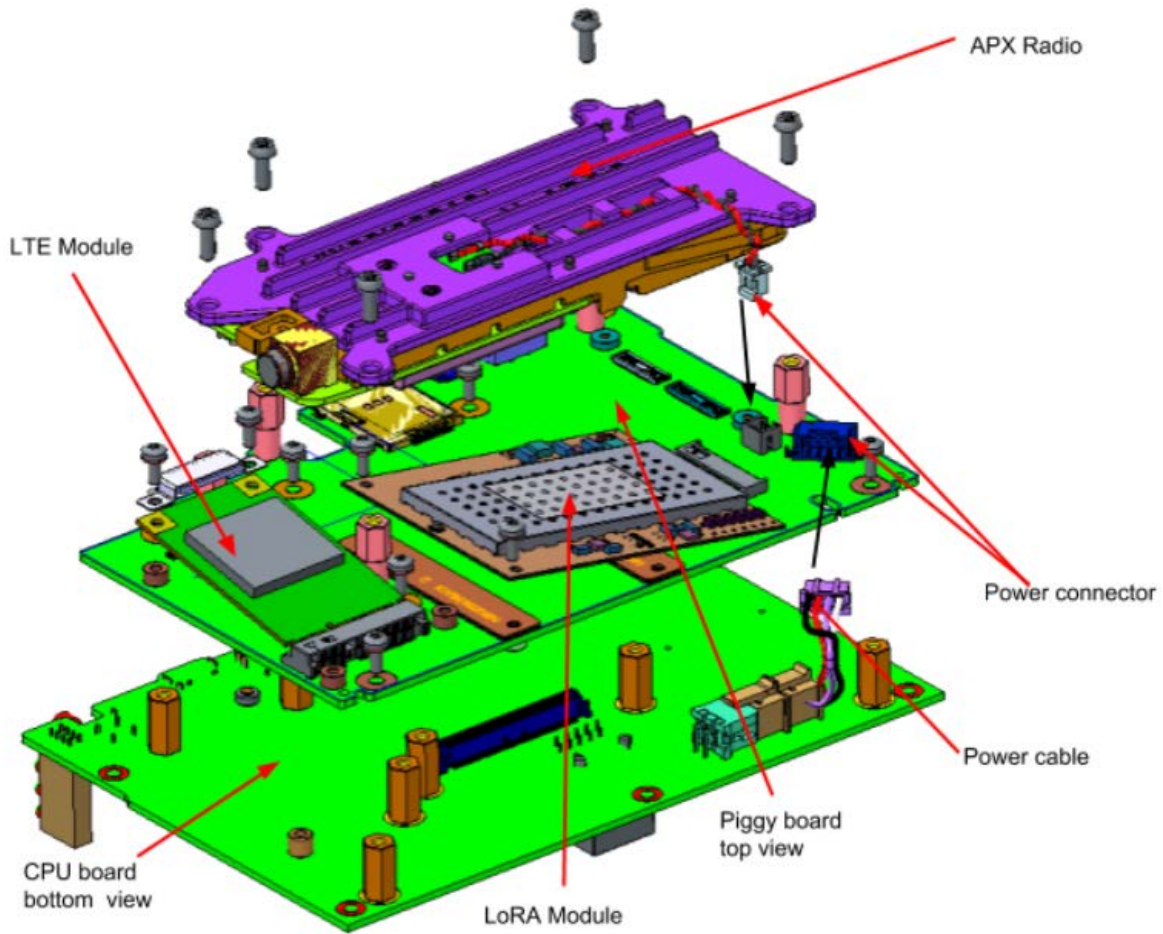
LTE MODULE Front View

EXHIBIT 9V



LTE MODULE Back View

EXHIBIT 9W



Exploded View