

EXHIBIT 9**INTERNAL PHOTOGRAPHS**

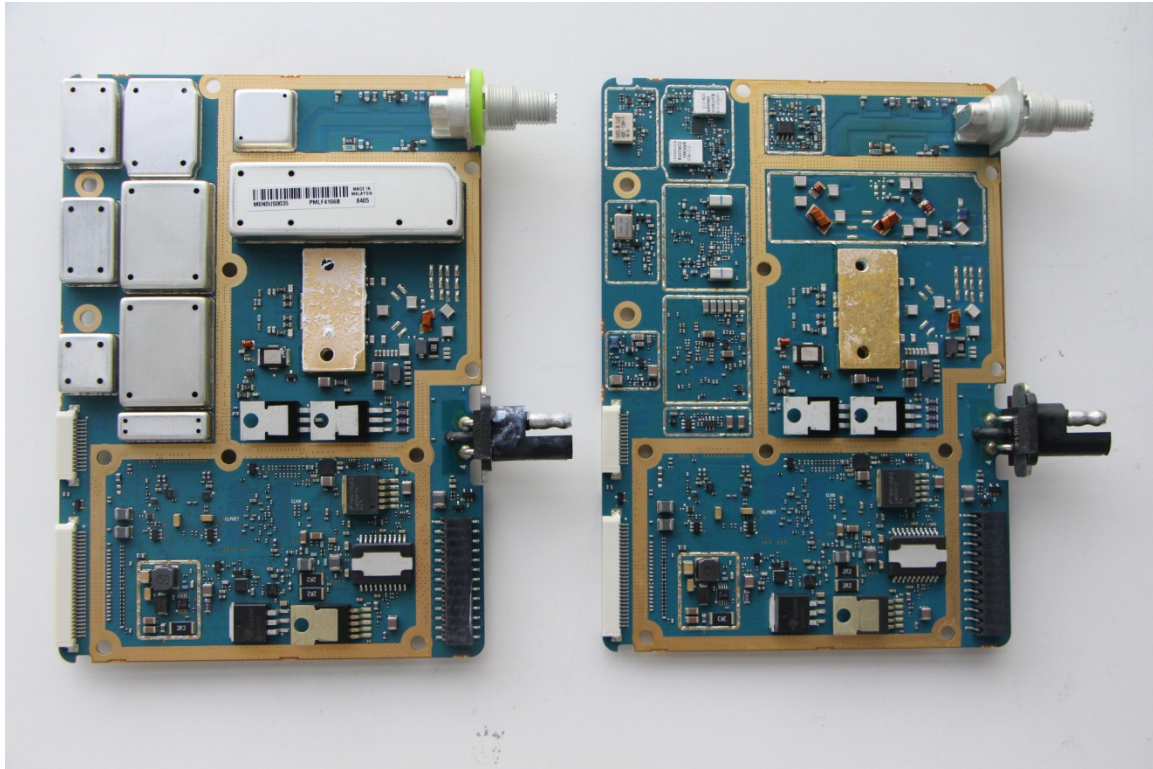
Pursuant to FCC Part 2.1033(b)(7), 2.1033(c)(12) and RSP 100 Sec 8.3

The following photographs are attached.

Exhibit

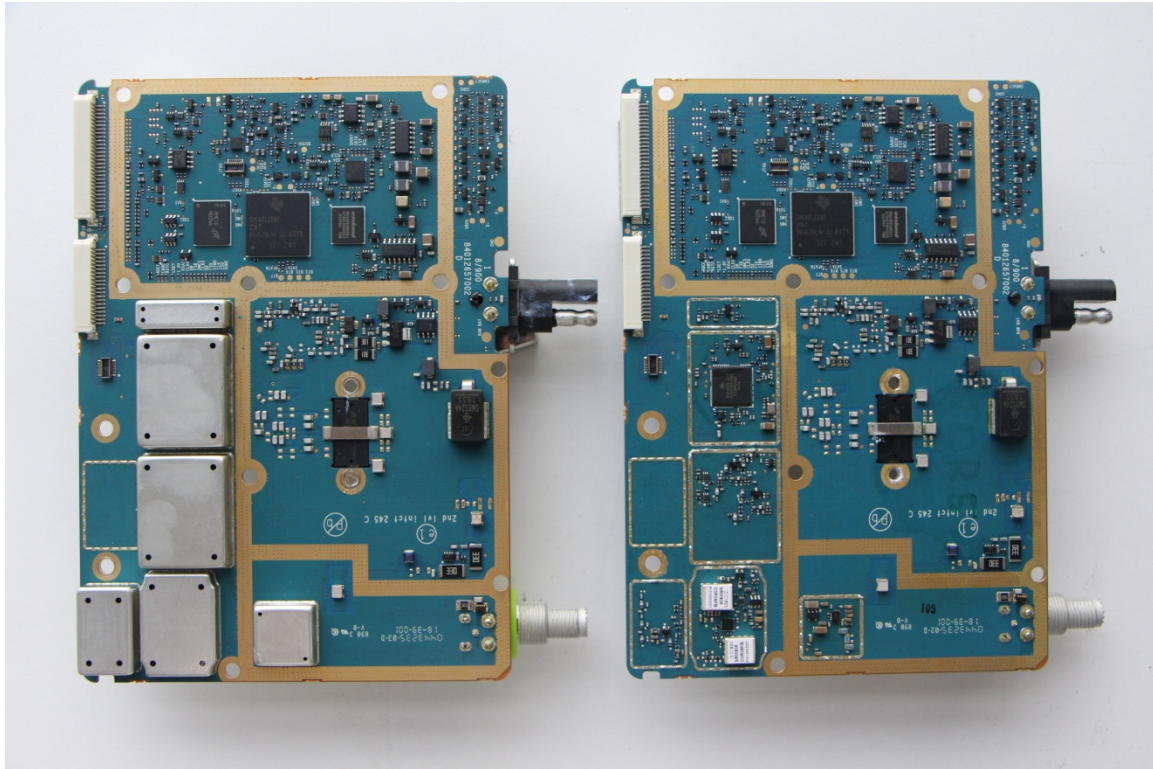
- | | | |
|----|---|----|
| 1. | RF board with and without shields (Top) | 9A |
| 2. | RF board with and without shields (Bottom) | 9B |
| 3. | Chassis and control heads (Top) | 9C |
| 4. | Chassis and control heads (Bottom) | 9D |
| 5. | GOB board with and without shields | 9E |
| 6. | Wifi/GPS/BT board with and without shields | 9F |
| 7. | Exploded view of radio | 9G |
| 8. | Exploded view of color display control head | 9H |
| 9. | Exploded view of numeric display control head | 9I |

Exhibits 9A



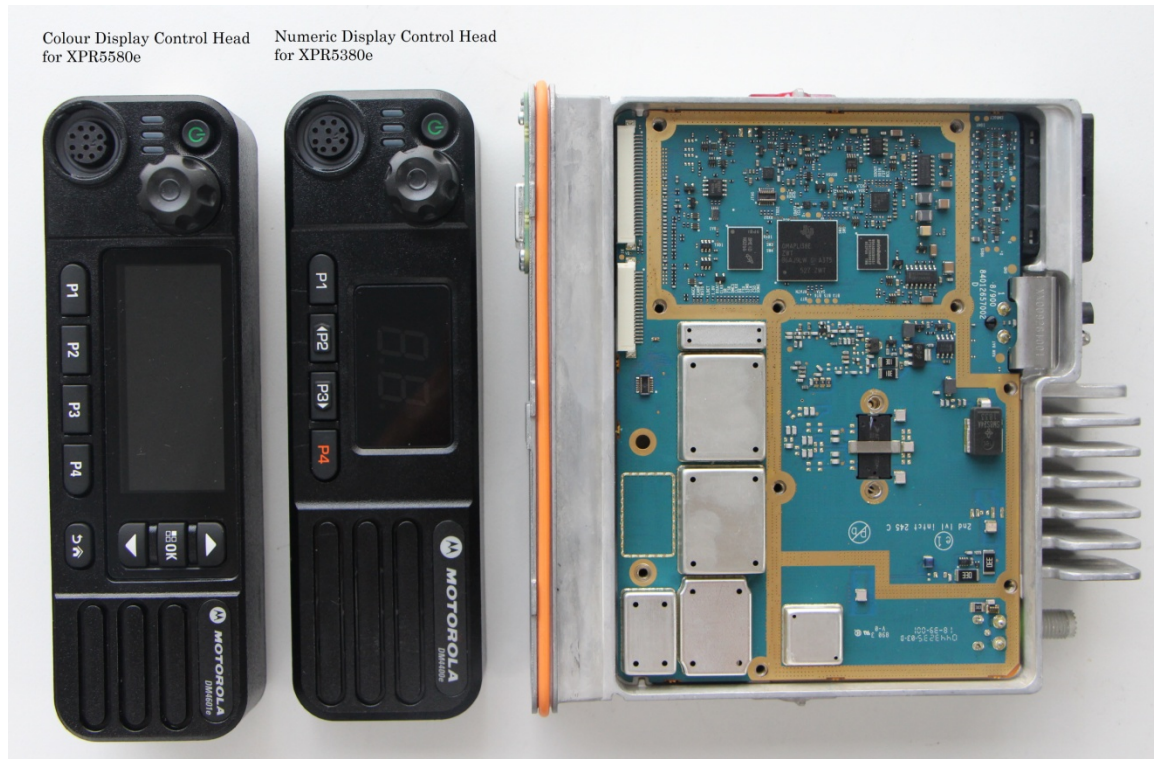
RF board with and without shields (Top)

Exhibits 9B



RF board with and without shields (Bottom)

Exhibits 9C



Chassis and control heads (Top)

Exhibits 9D



Chassis and control heads (Bottom)

Exhibits 9E



GOB board (Top)

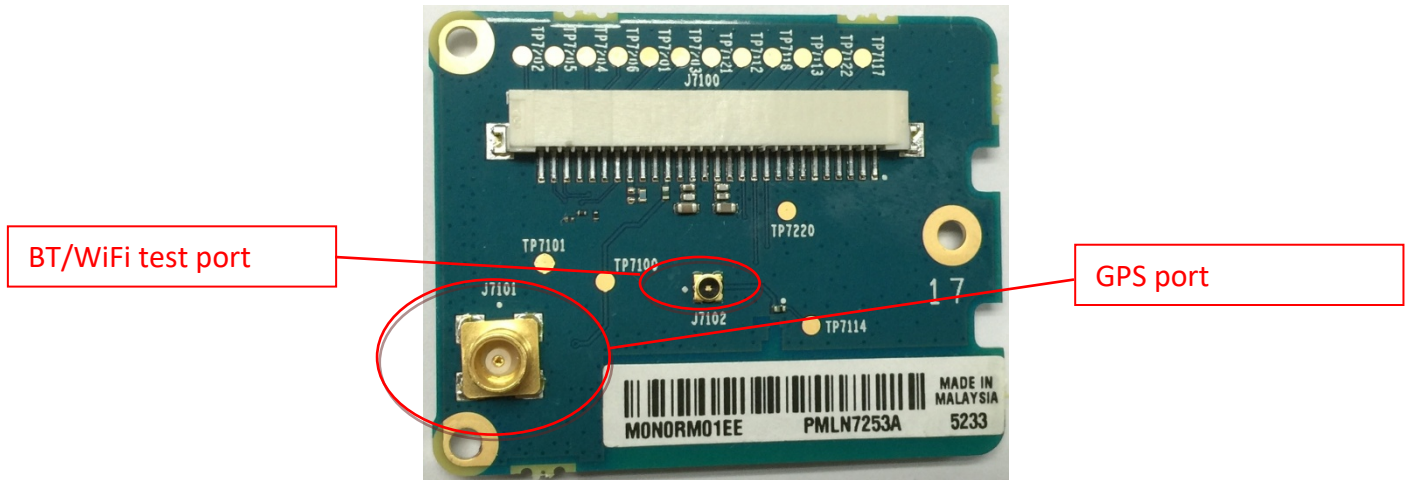


GOB board with shield (Bottom)

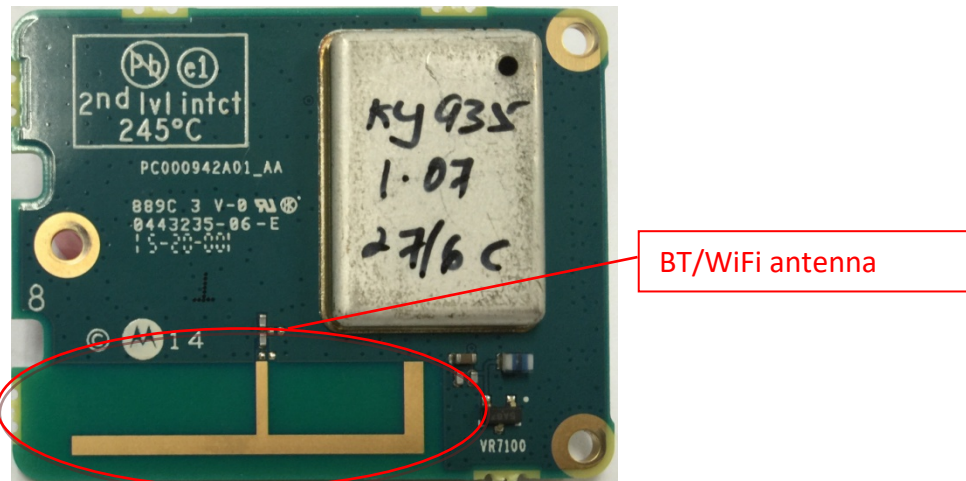


GOB board without shield (Bottom)

Exhibits 9F



GPS/BT/Wifi board (Top)

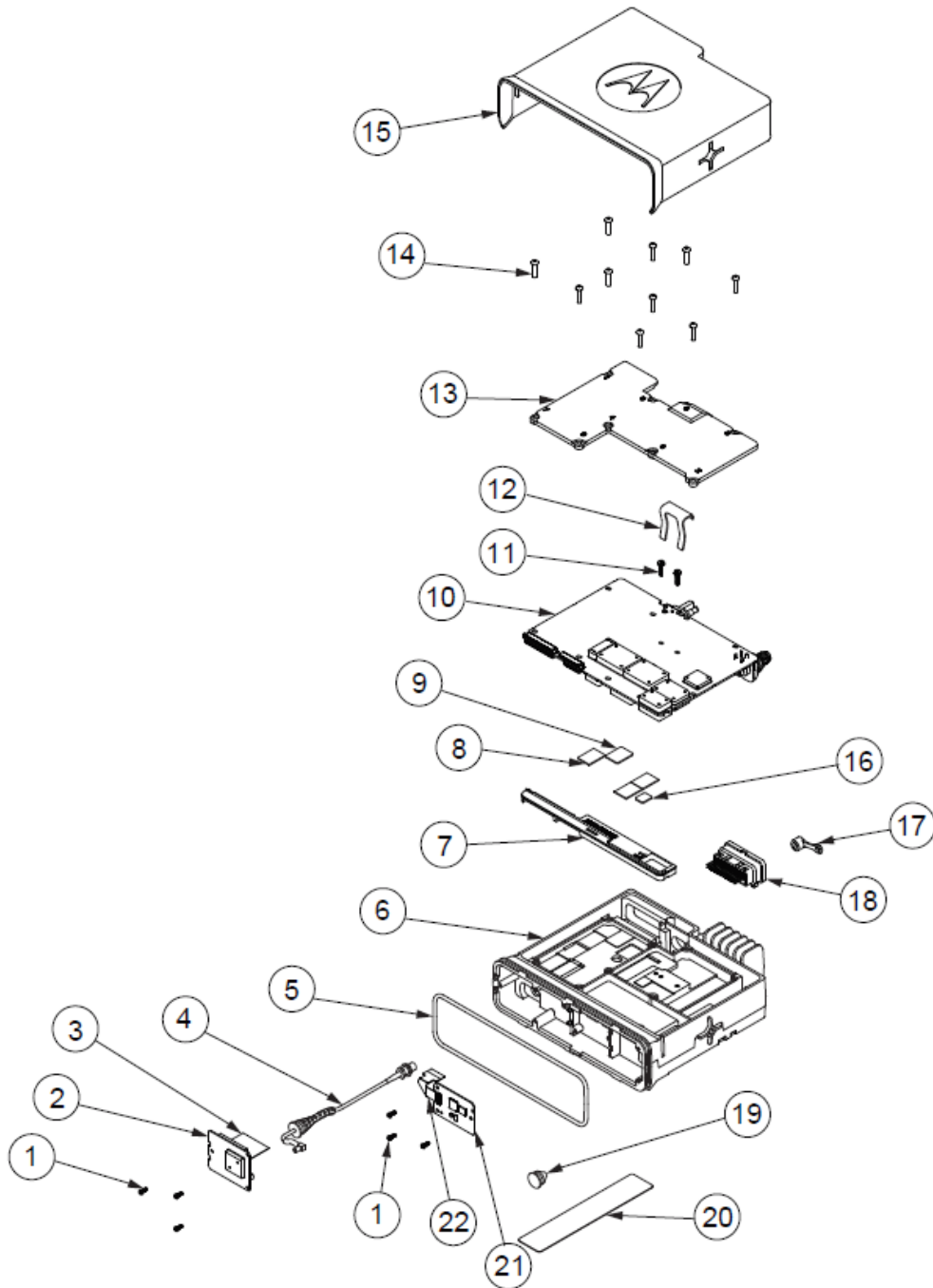


GPS/BT/Wifi board with shield (Bottom)



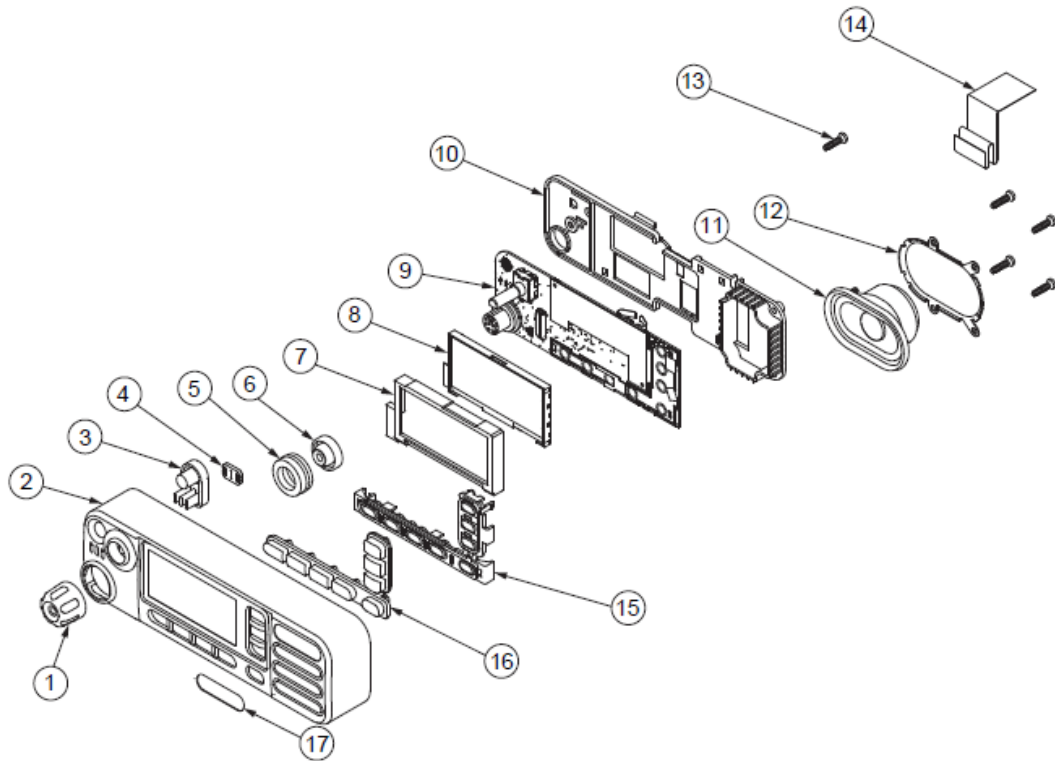
GPS/BT/Wifi board without shield (Bottom)

Exhibits 9G



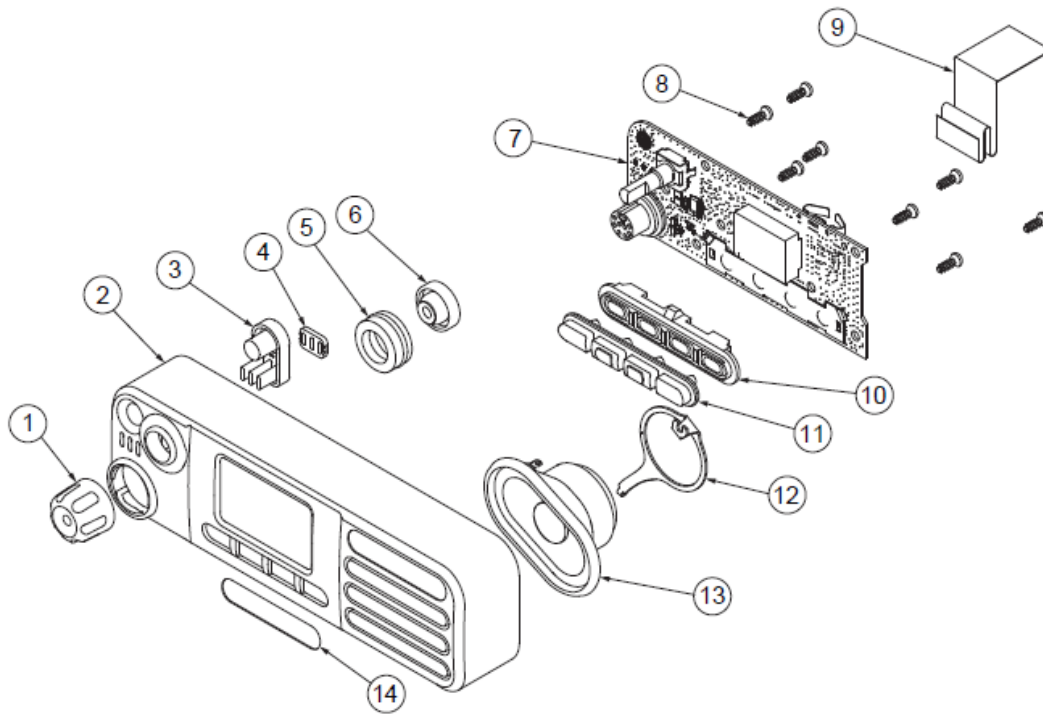
Exploded view of radio

Exhibits 9H



Exploded view of color display control head

Exhibits 9I



Exploded view of numeric display control head