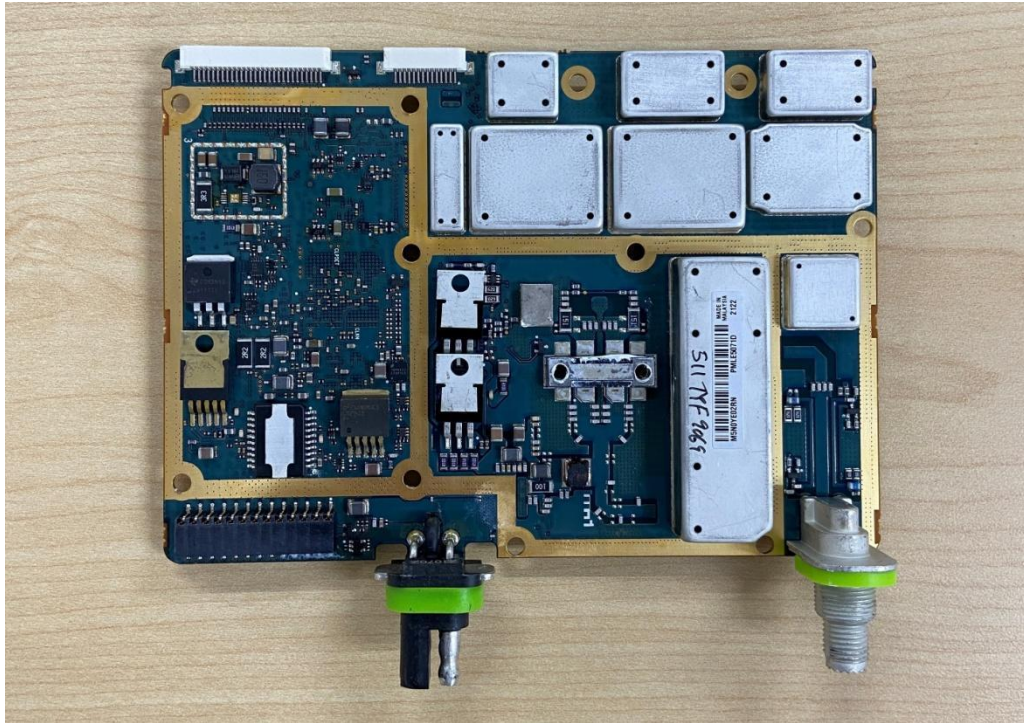


EXHIBIT 9**Internal Photographs**

(Pursuant to FCC Part 2.1033(b)(7), 2.1033(c)(12) and RSP 100 Annex C)

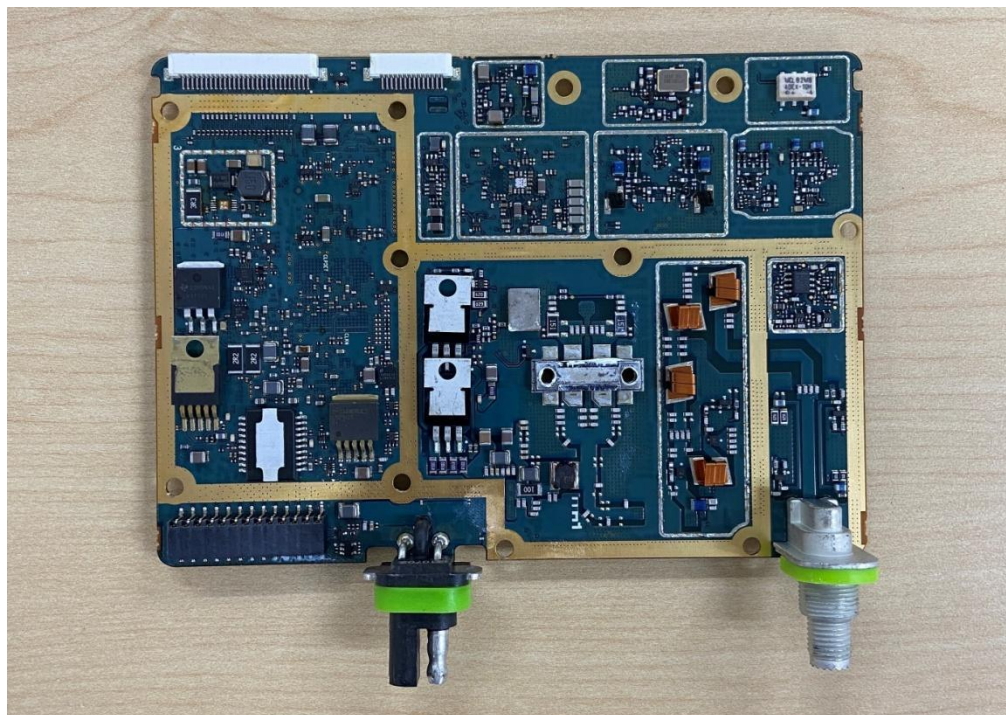
The following photographs are attached.		<u>Exhibit</u>
1.	RF board <u>with</u> Shields (Top)	9A
2.	RF board <u>without</u> Shields (Top)	9B
3.	RF board <u>with</u> Shields (Bottom)	9C
4.	RF board <u>without</u> Shields (Bottom)	9D
5.	Chassis and control heads (Top)	9E
6.	Chassis and control heads (Bottom)	9F
7.	GOB Rev A board (Top)	9G
8.	GOB Rev A board with Shields (Bottom)	9H
9.	GOB Rev A board without Shields (Bottom)	9I
10.	GOB Rev B board (Top)	9J
11.	GOB Rev B board with Shields (Bottom)	9K
12.	GOB Rev B board without Shields (Bottom)	9L
13.	GOB Rev C board (Top)	9M
14.	GOB Rev C board with Shields (Bottom)	9N
15.	GOB Rev C board without Shields (Bottom)	9O
16.	GNSS Expansion board (Top)	9P
17.	GNSS Expansion board with Shields (Bottom)	9Q
18.	GNSS Expansion board without Shields (Bottom)	9R

Exhibit 9A



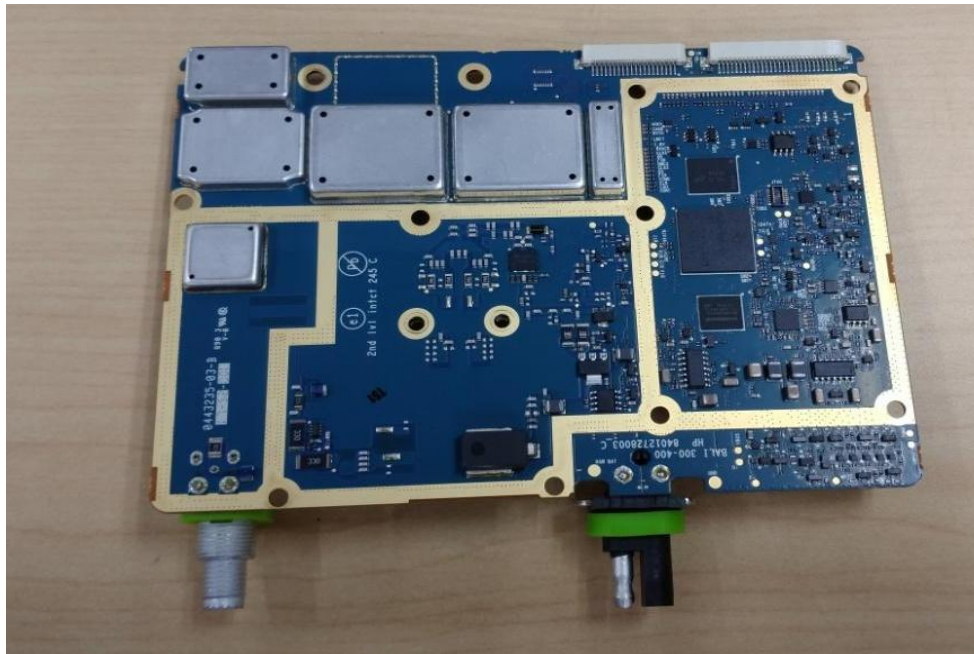
RF board with Shields (Top)

Exhibit 9B



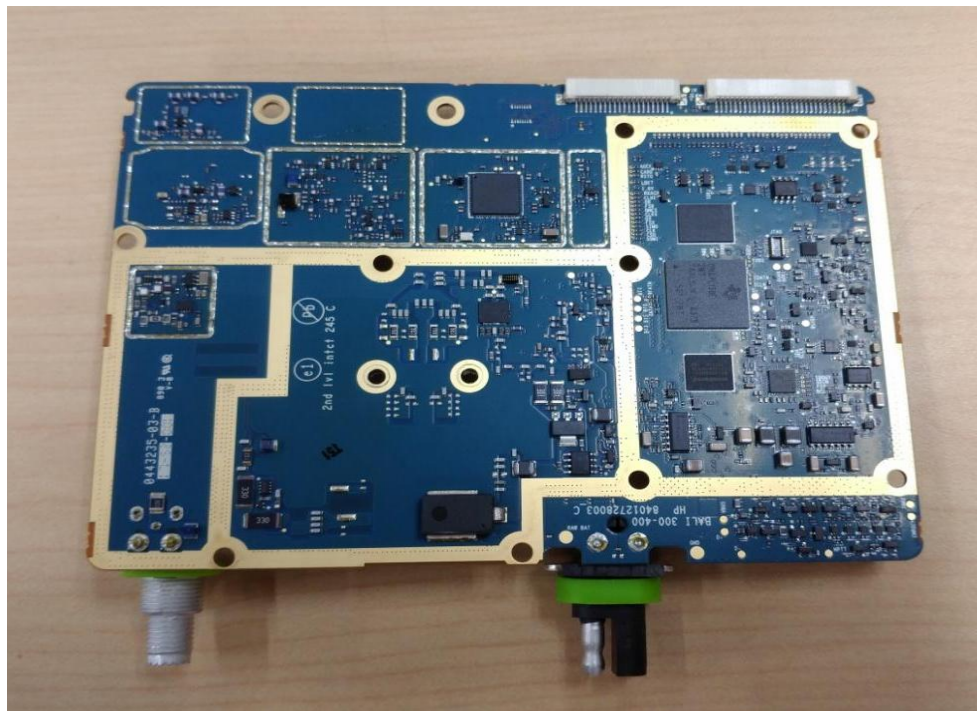
RF board without Shields (Top)

Exhibit 9C



RF board with Shields (Bottom)

Exhibit 9D



RF board without Shields (Bottom)

Exhibit 9E

Colour Display Control Head
For XPR5550e

Numeric Display Control Head
For XPR5350e



Chassis and control heads (Top)

Exhibit 9F



Chassis and control heads (Bottom)

Exhibit 9G



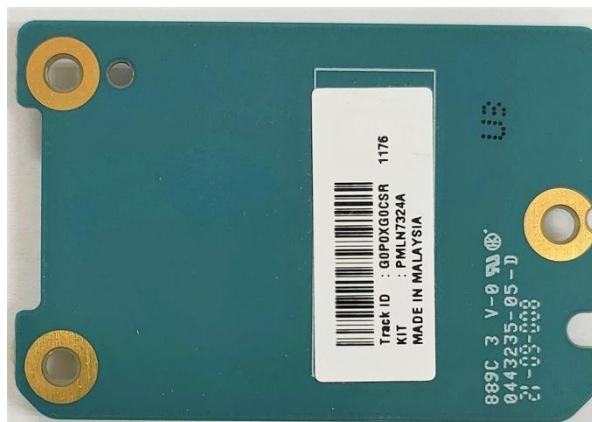
GOB Rev A board with Shield (Top)

Exhibit 9H



GOB Rev A board without Shield (Top)

Exhibit 9I



GOB Rev A board (Bottom)

Exhibit 9J



GOB Rev B board with Shield (Top)

Exhibit 9K



GOB Rev B board without Shield (Top)

Exhibit 9L



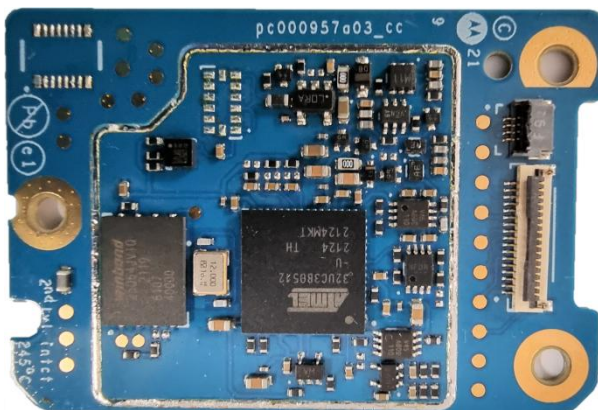
GOB Rev B board (Bottom)

Exhibit 9M



GOB Rev C board with Shield (Top)

Exhibit 9N



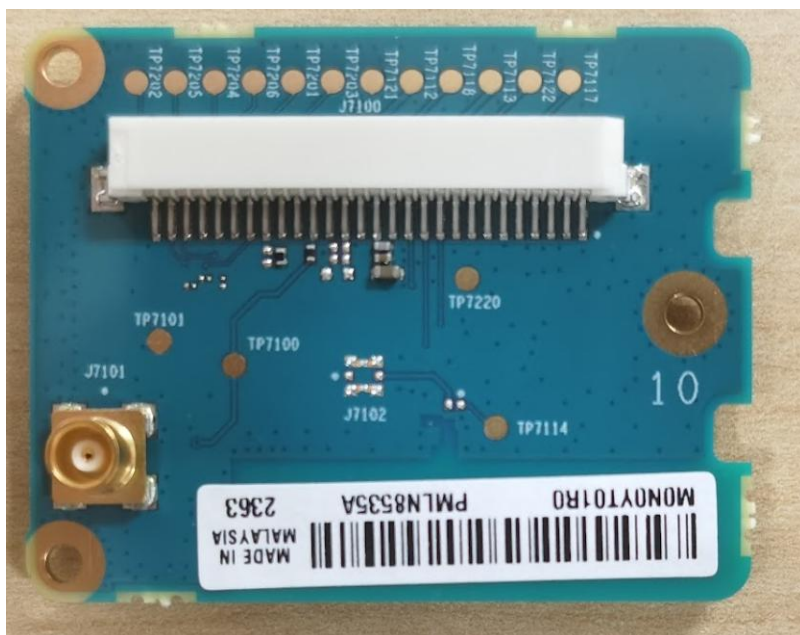
GOB Rev C board without Shield (Top)

Exhibit 9O



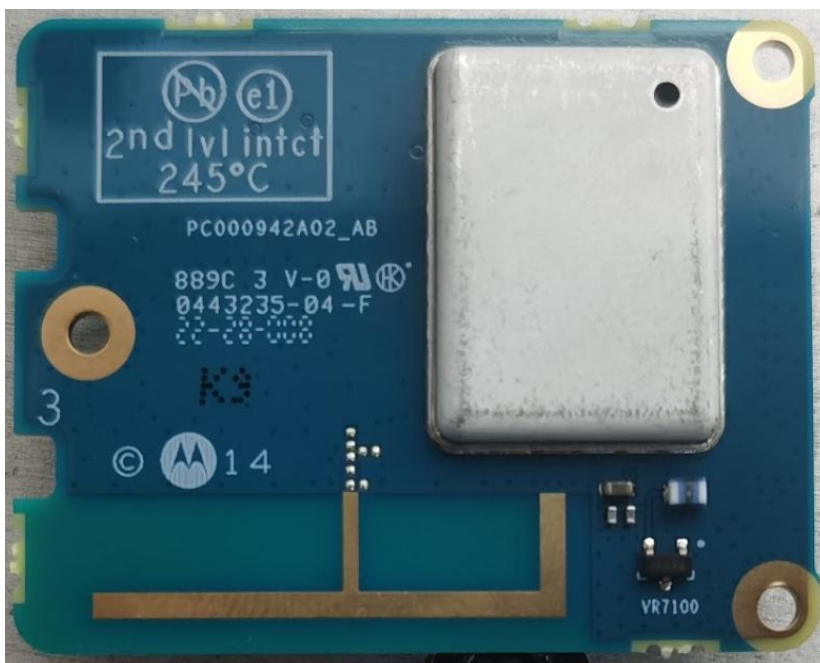
GOB Rev C board (Bottom)

Exhibit 9P



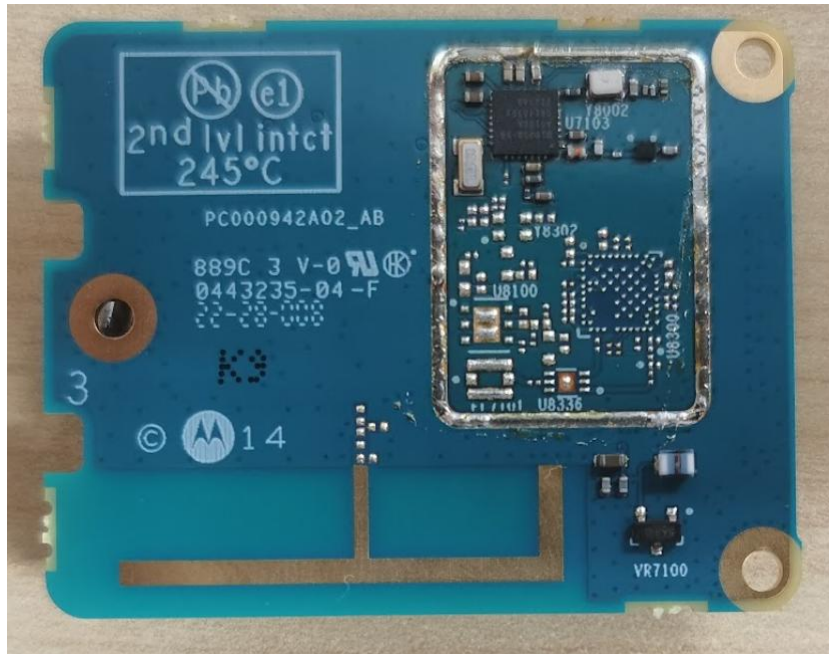
GNSS Expansion board (Top)

Exhibit 9Q



GNSS Expansion board with Shields (Bottom)

Exhibit 9R



GNSS Expansion board without Shields (Bottom)

***** END *****