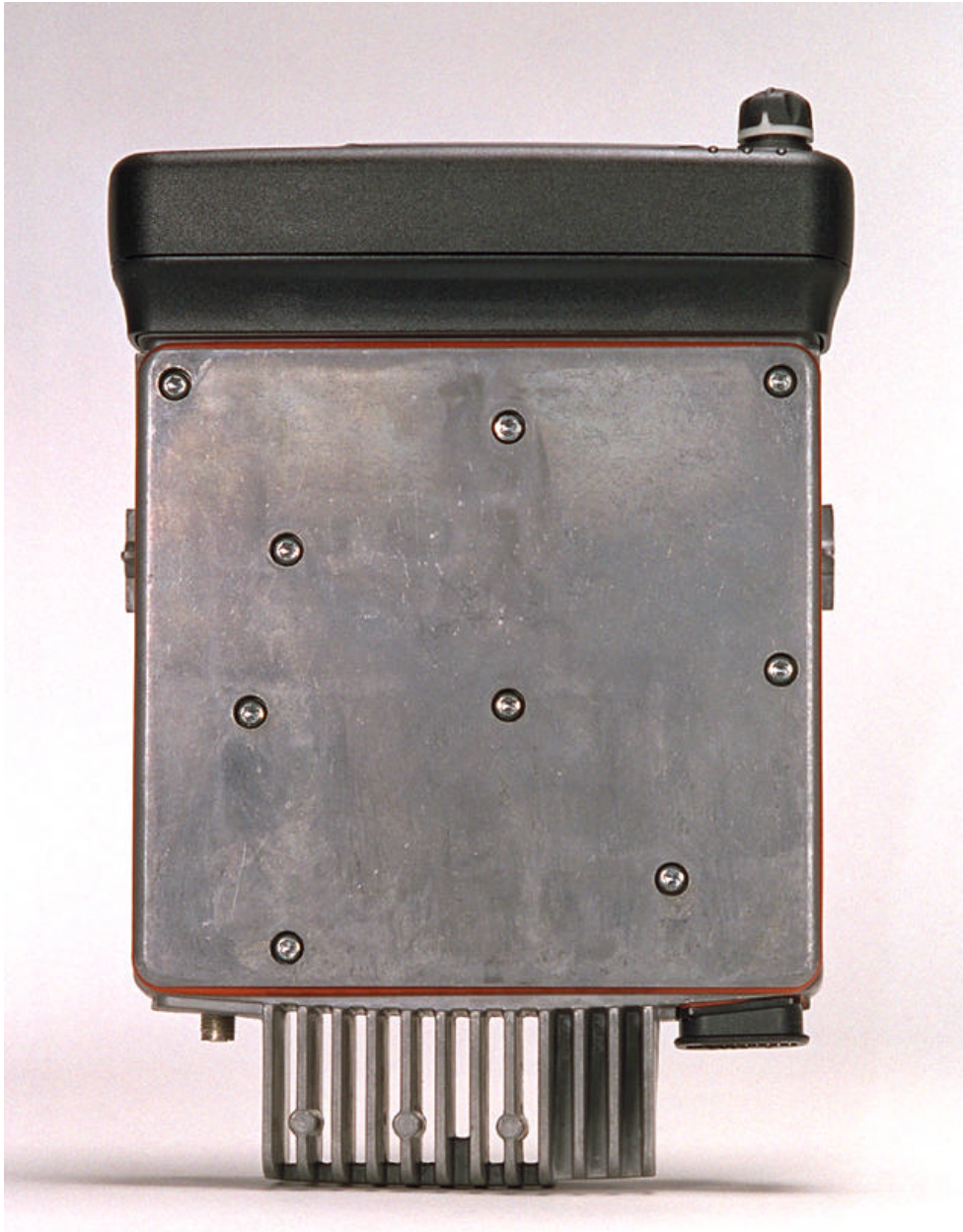
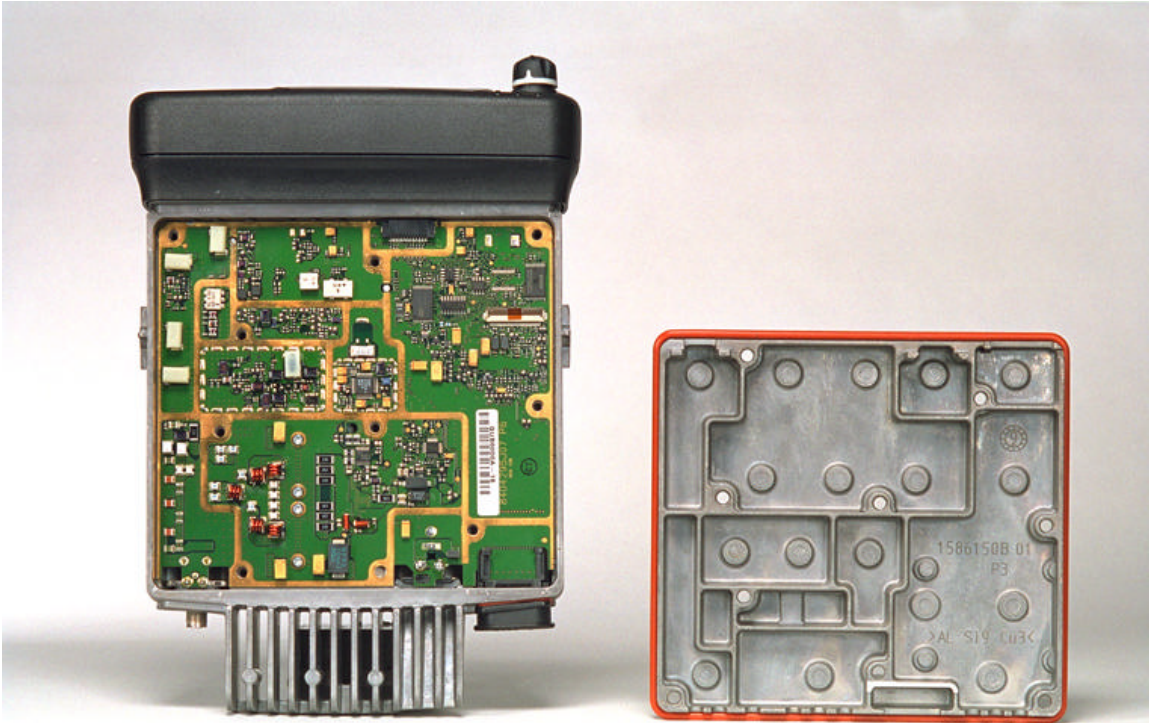


INTERNAL PHOTOGRAPHS

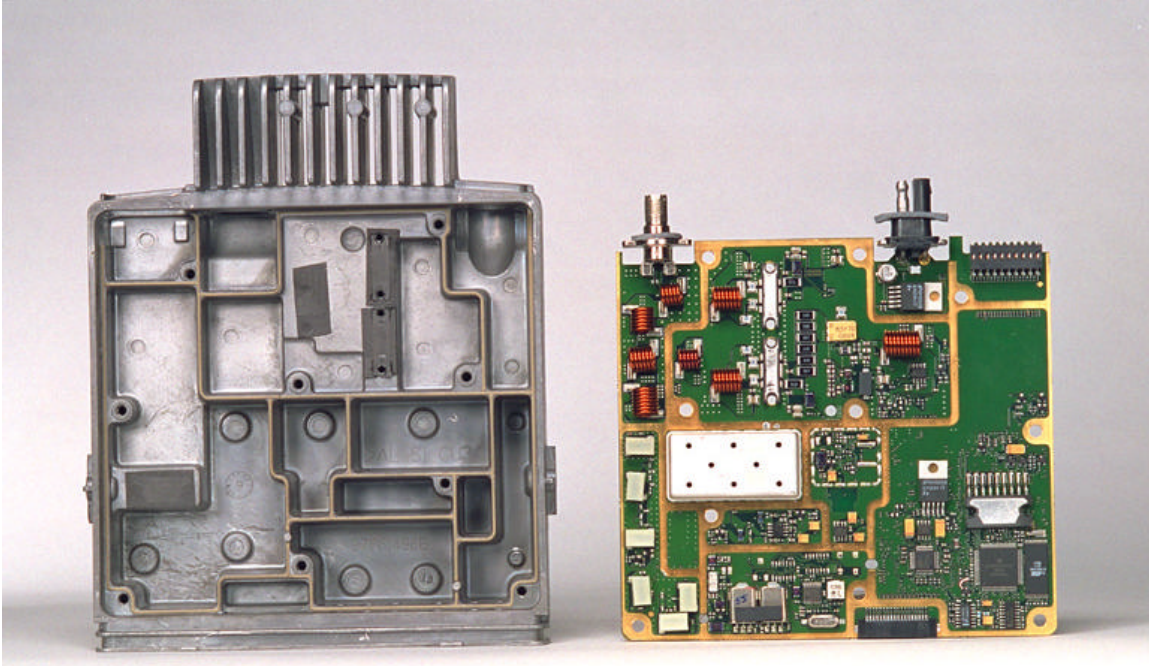
1. Exhibit 10-1 Top View, with decorative plastic cover removed.
2. Exhibit 10-2 Top View, with shield removed.
3. Exhibit 10-3 Top View of Chassis, with circuit board removed.



**TOP VIEW, WITH DECORATIVE PLASTIC COVER REMOVED**



**TOP VIEW, WITH METAL SHIELD COVER REMOVED  
(TOP SIDE OF CIRCUIT BOARD VISIBLE)**



**TOP VIEW OF CHASSIS, WITH CIRCUIT BOARD REMOVED  
(BOTTOM SIDE OF CIRCUIT BOARD VISIBLE)**