

EXHIBIT 9

Internal Photographs

(Pursuant to FCC Part 2.1033(b)(7), 2.1033(c)(12) and RSP 100 Annex C)

The following photographs are attached.

Exhibit

- | | | |
|-----|--|----|
| 1. | Main board <u>with</u> Shields (Top) | 9A |
| 2. | Main board <u>without</u> Shields (Top) | 9B |
| 3. | Main board <u>with</u> Shields (Bottom) | 9C |
| 4. | Main board <u>without</u> Shields (Bottom) | 9D |
| 5. | Main boards <u>with</u> chassis and housing for (Front Side) | 9E |
| 6. | Chassis and housing (Back Side) | 9F |
| 7. | AP board <u>with</u> Shields (Top) | 9G |
| 8. | AP board <u>without</u> Shields (Top) | 9H |
| 9. | AP board <u>with</u> Shields (Bottom) | 9I |
| 10. | AP board <u>without</u> Shields (Bottom) | 9J |

Exhibit 9A – MAIN board with Shields (Top)

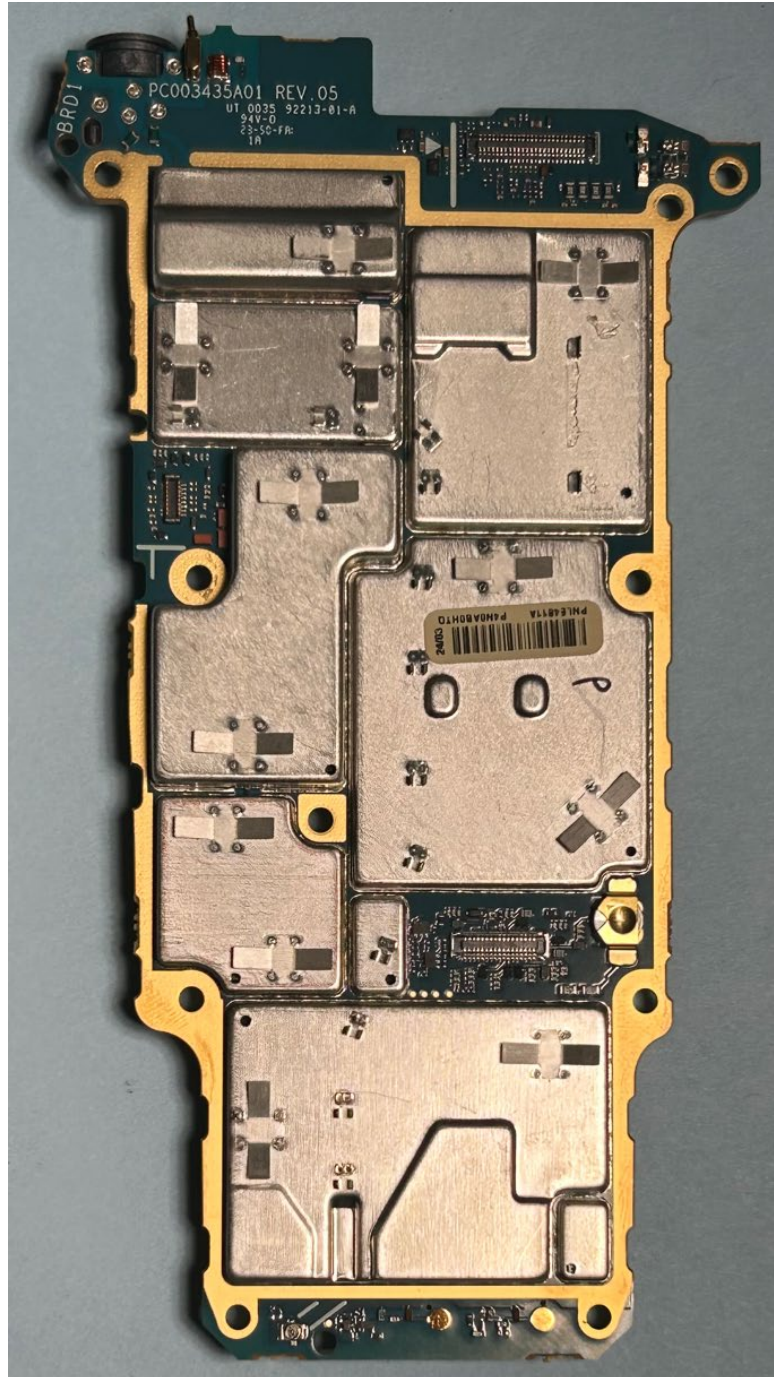


Exhibit 9B – MAIN board without Shields (Top)

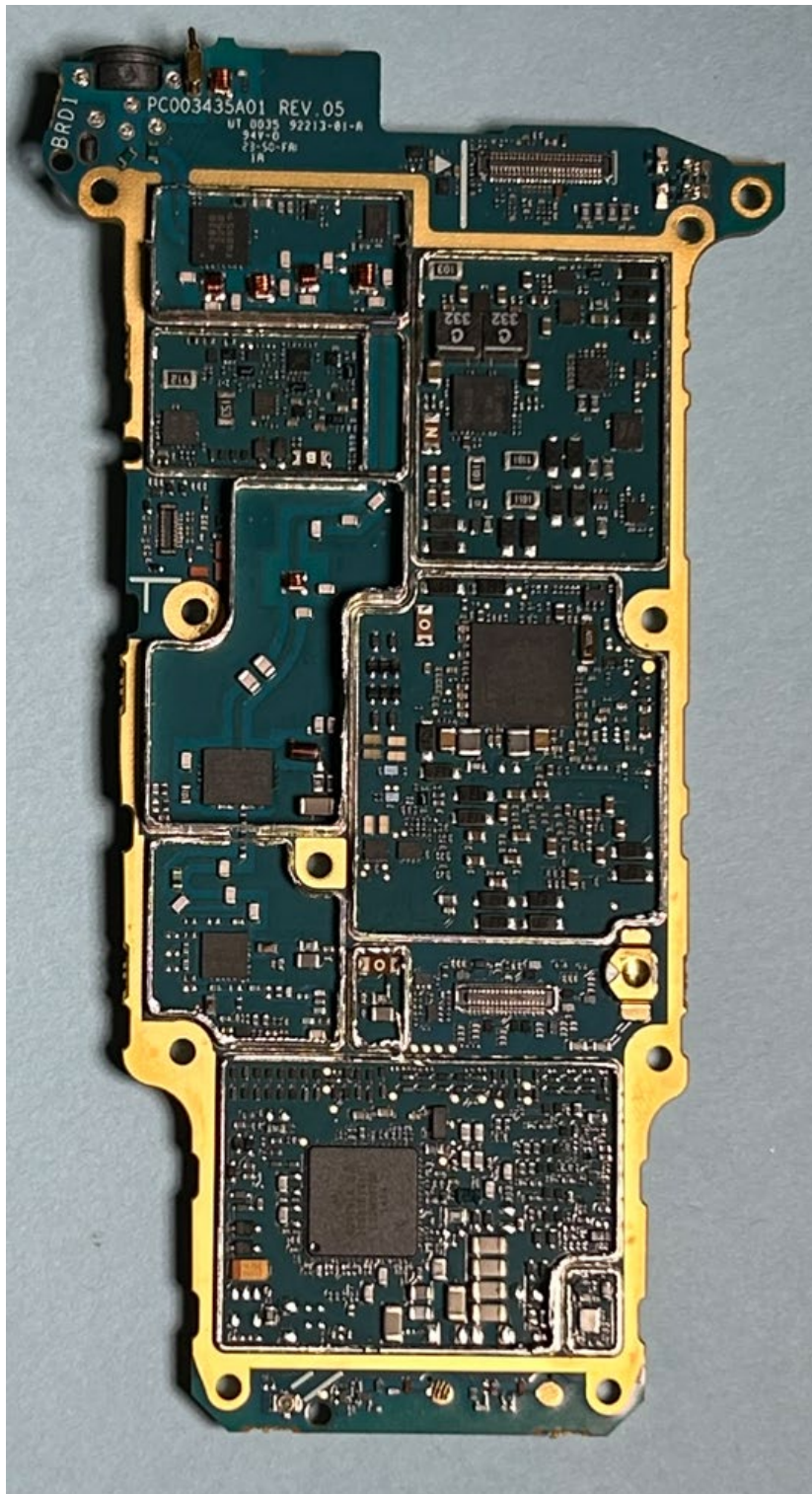


Exhibit 9C – MAIN board with Shields (Bottom)

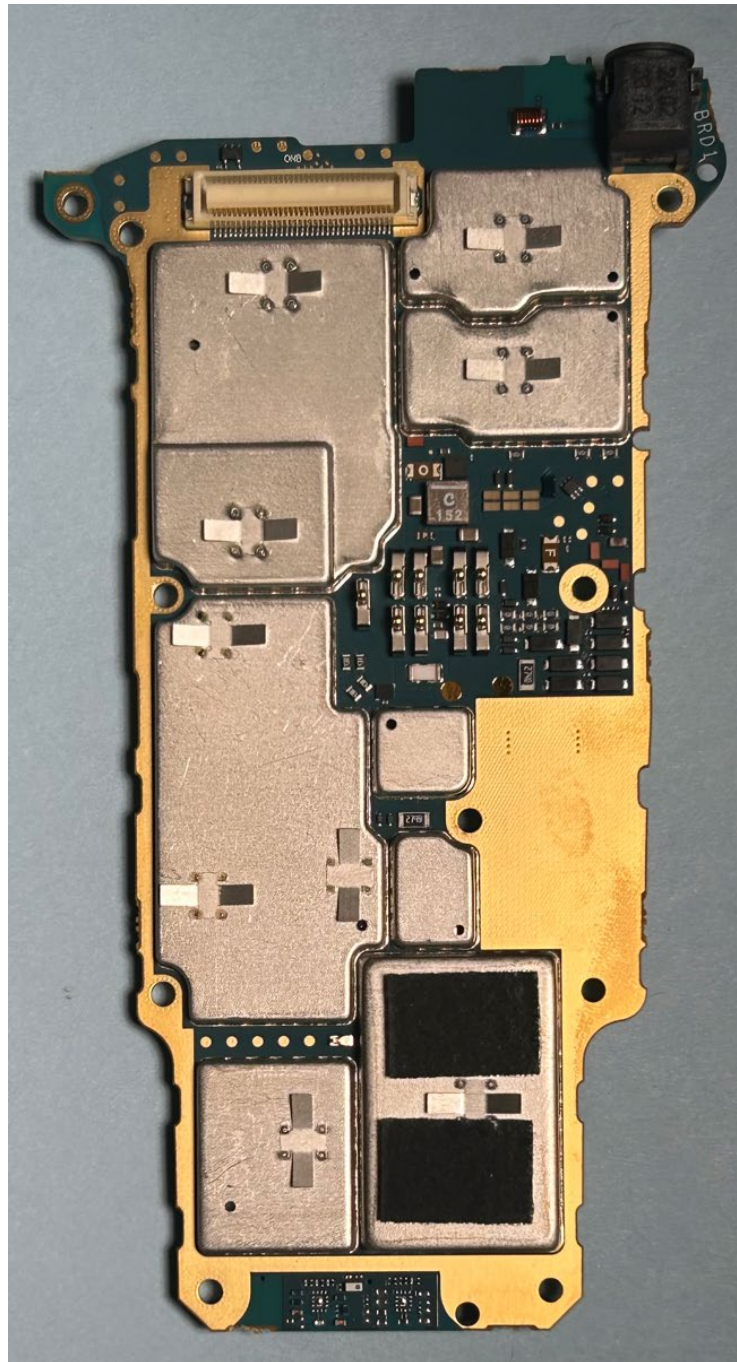


Exhibit 9D – MAIN board without Shields (Bottom)

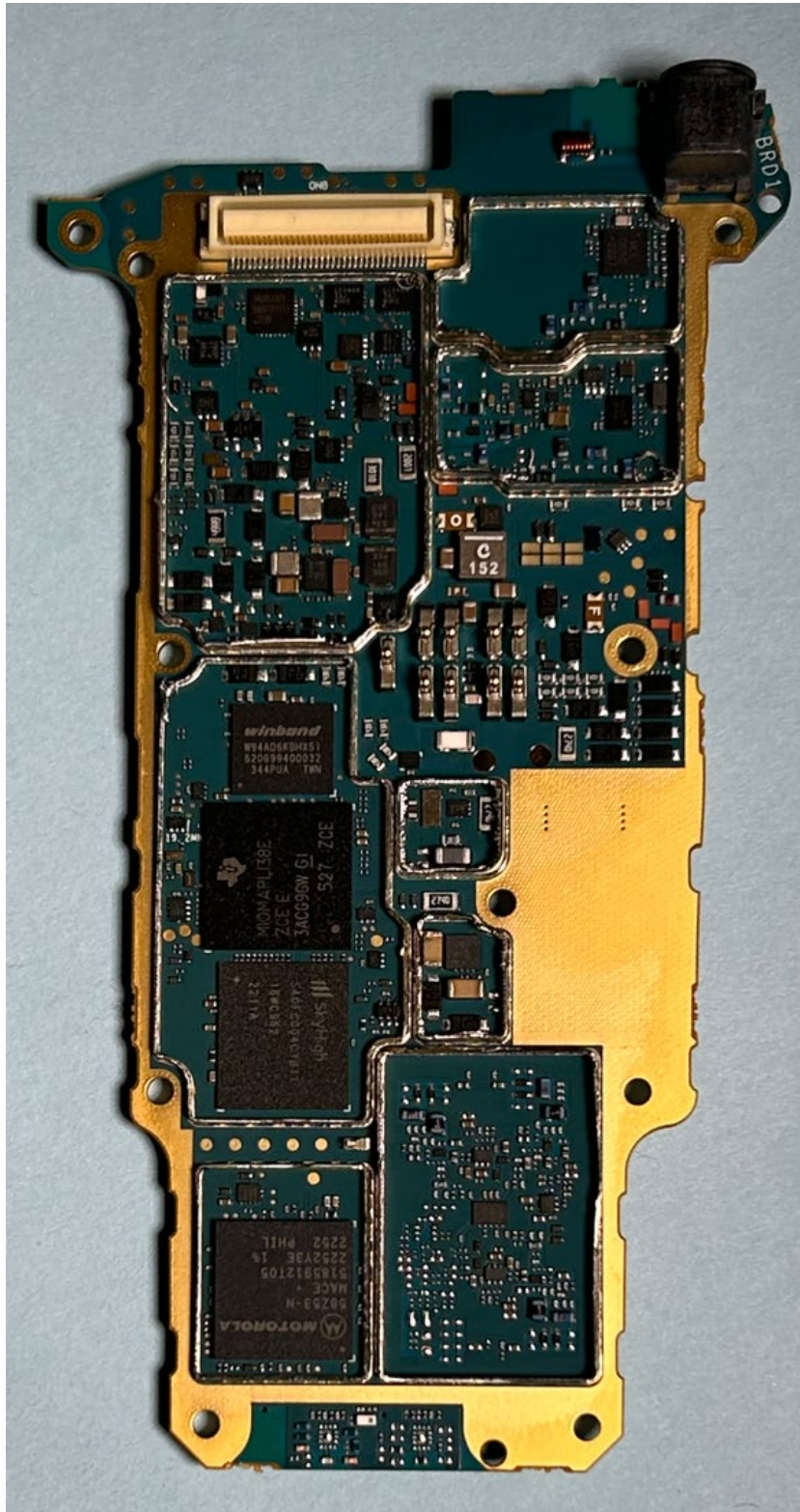


Exhibit 9E – MAIN boards with chassis and housing for (Front Side)



Exhibit 9F – Chassis and housing (Back Side)



Exhibit 9G – AP board with Shields (Top)

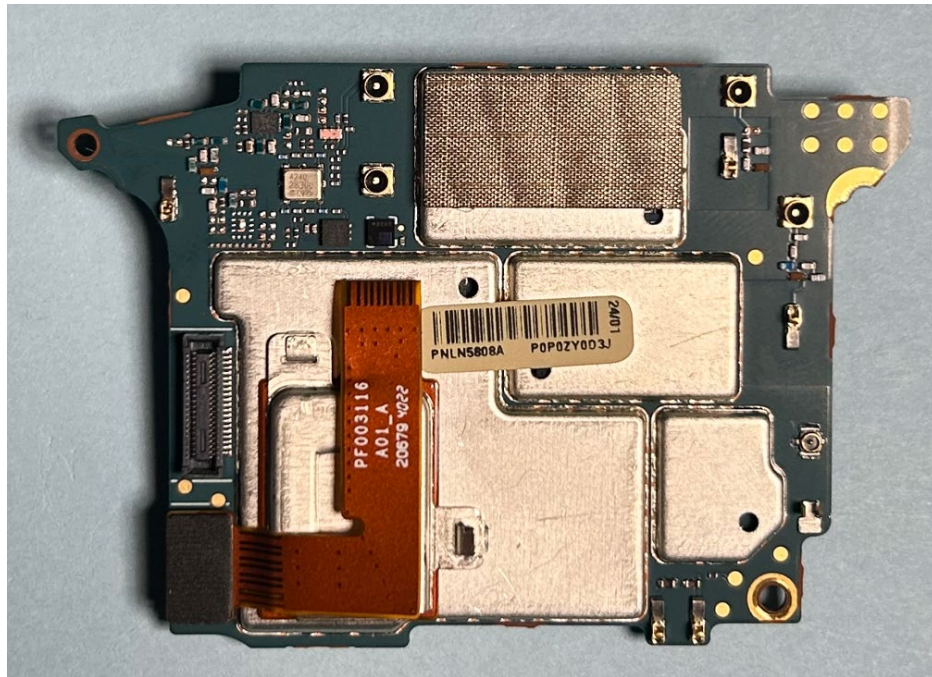


Exhibit 9H – AP board without Shields (Top)

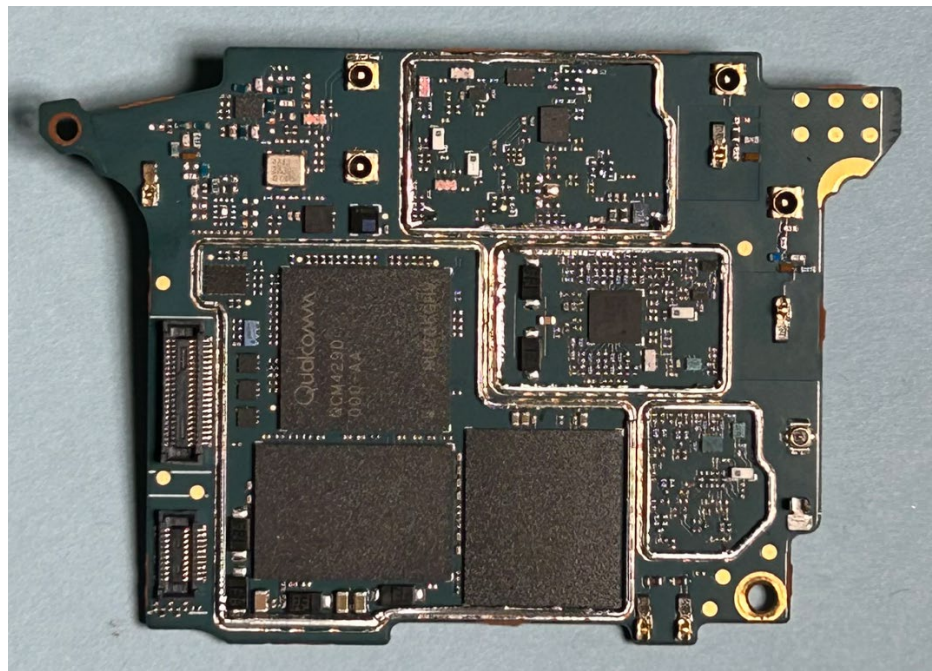


Exhibit 9I – AP board with Shields (Bottom)

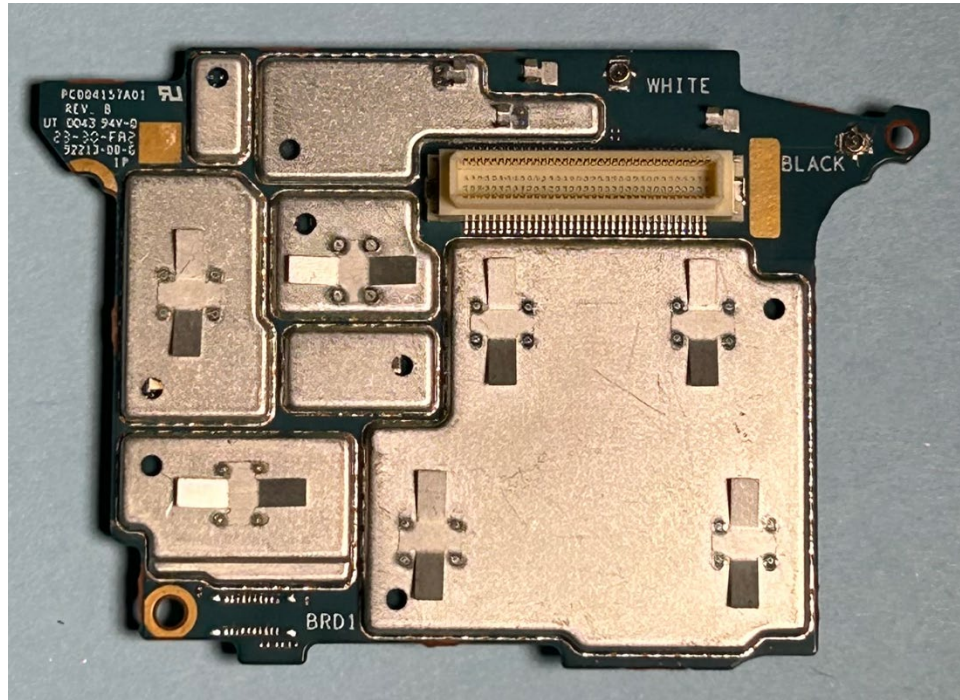
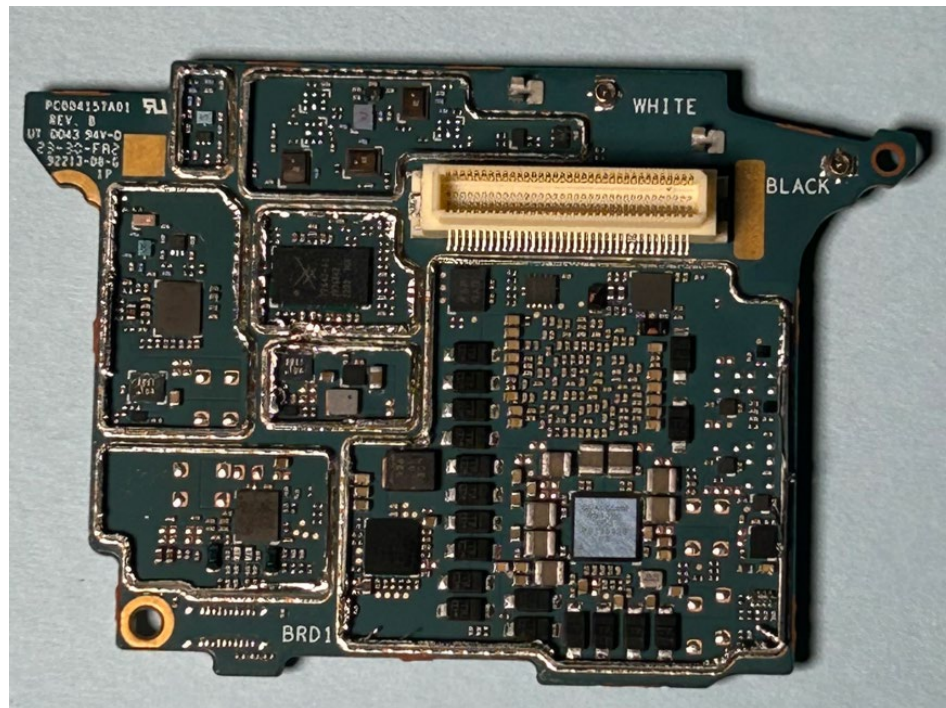


Exhibit 9J – AP board without Shields (Bottom)



*** END ***