

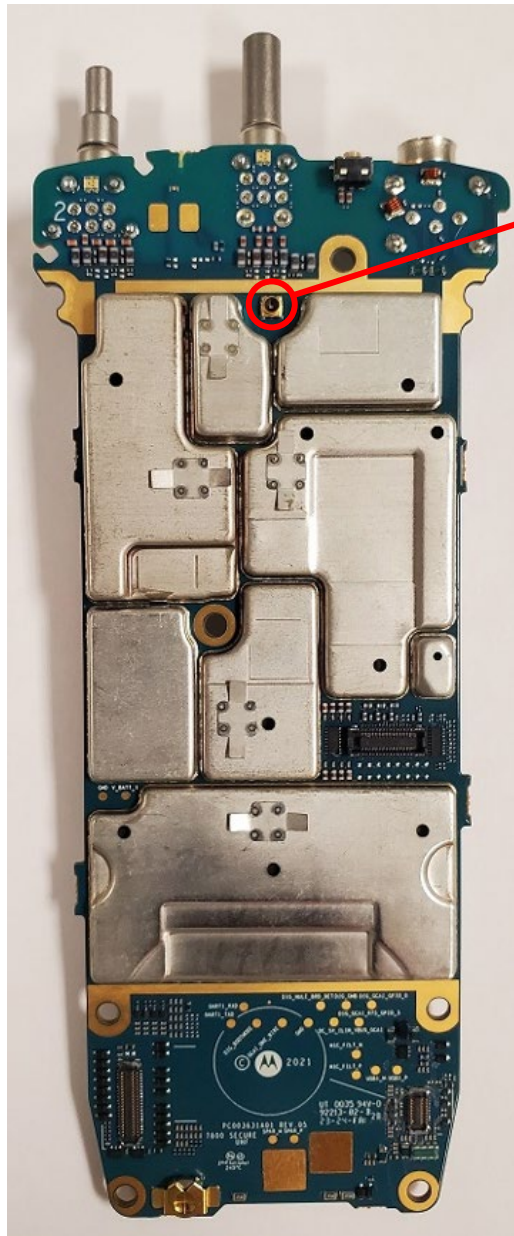
EXHIBIT 9**Internal Photographs**

(Pursuant to FCC Part 2.1033(b)(7), 2.1033(c)(12) and RSP 100 Annex C)

The following photographs are attached.

	<u>Exhibit</u>
1. Main board <u>with</u> Shields (Top) (APX N50)	9A
2. Main board <u>without</u> Shields (Top) (APX N50)	9B
3. Main board <u>with</u> Shields (Bottom) (APX N50)	9C
4. Main board <u>without</u> Shields (Bottom) (APX N50)	9D
5. Main board <u>with</u> Shields (Top) (APX N30)	9E
6. Main board <u>without</u> Shields (Top) (APX N30)	9F
7. Main board <u>with</u> Shields (Bottom) (APX N30)	9G
8. Main board <u>without</u> Shields (Bottom) (APX N30)	9H
9. Chassis and housing (Front Side) (APX N50)	9I
10. Main board with chassis and housing (Back side) (APX N50/APX N50 for Hazloc Model)	9J
11. Chassis and housing (Front Side) (APX N30)	9K
12. Main board with chassis and housing (Back side) (APX N30/APXN30 for Hazloc Model)	9L

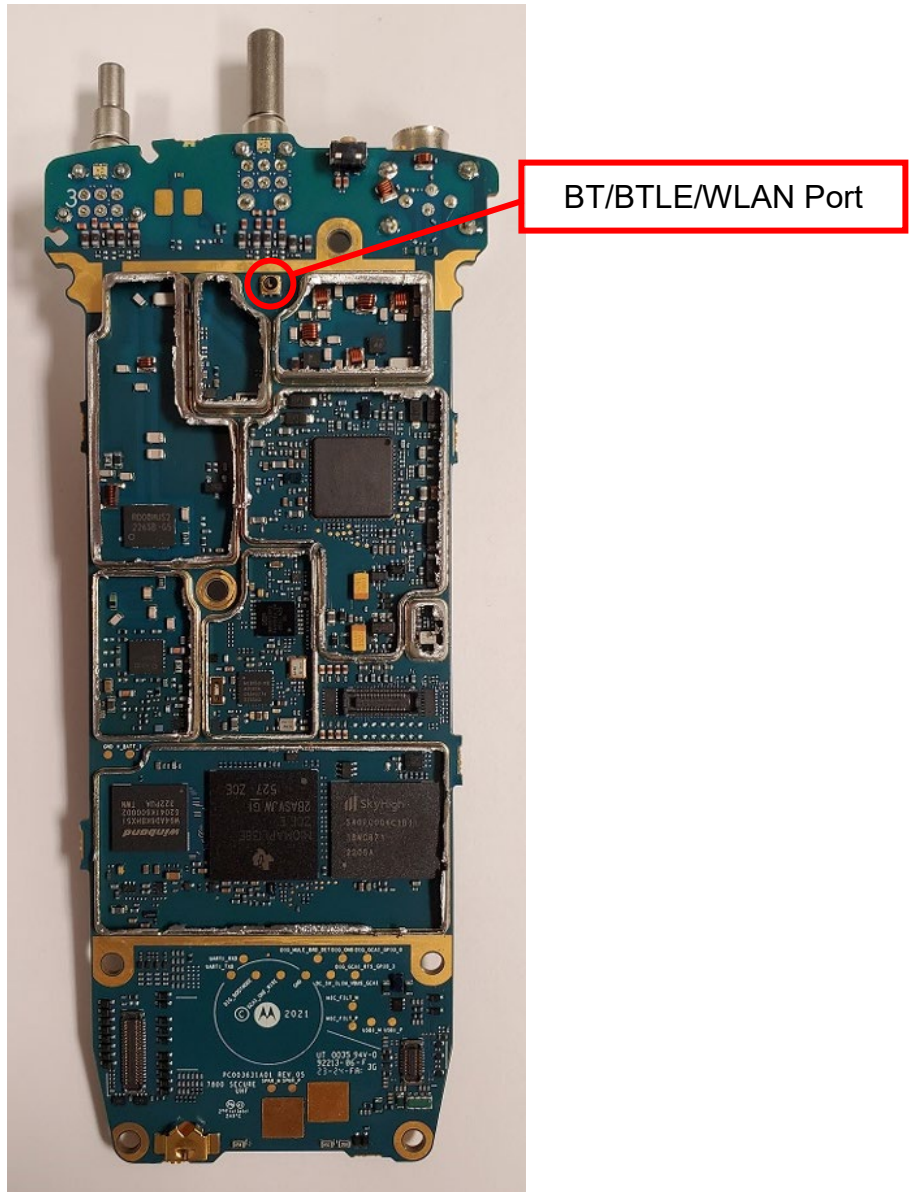
Exhibit 9A - Main board with Shields (Top) APX N50



BT/BTLE/WLAN Port

APX N50 / APX N50 for Hazloc Model

Exhibit 9B - Main board without Shields (Top) (APX N50)



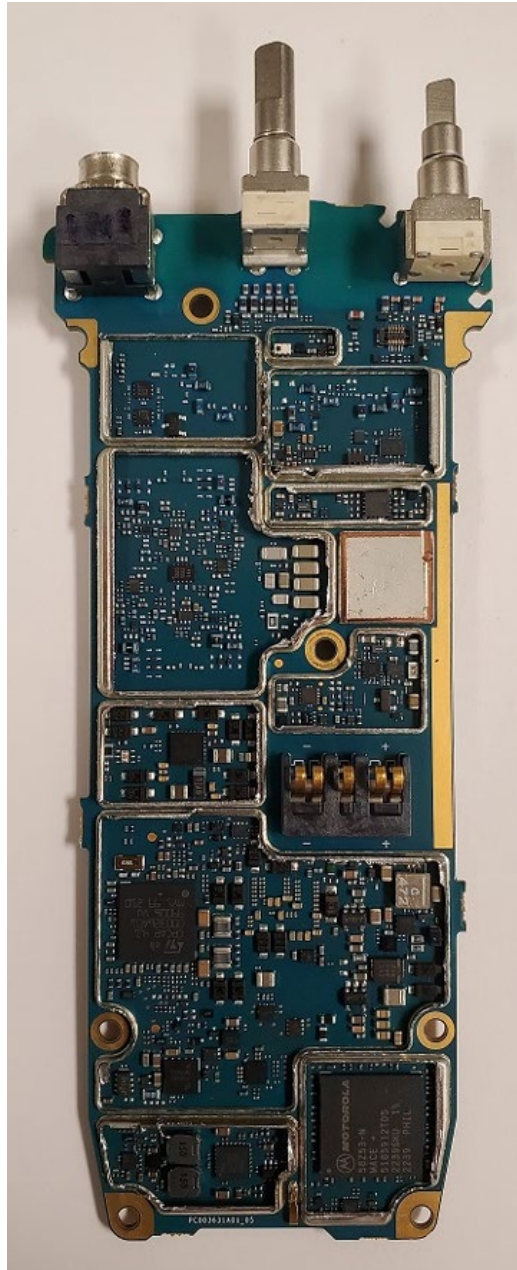
APX N50 / APX N50 for Hazloc Model

Exhibit 9C - Main board with Shields (Bottom) (APX N50)



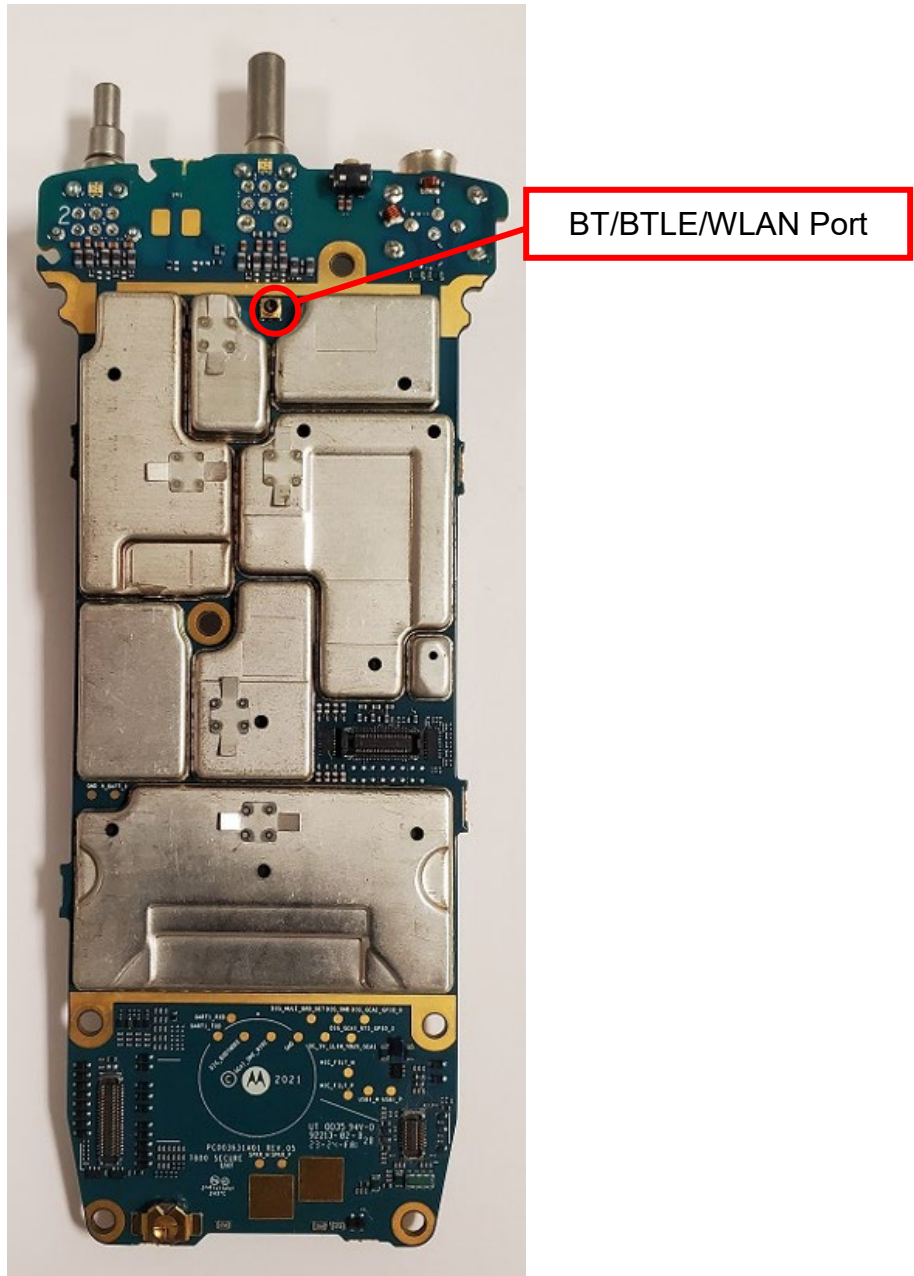
APX N50 / APX N50 for Hazloc Model

Exhibit 9D - Main board without Shields (Bottom) (APX N50)



APX N50 / APX N50 for Hazloc Model

Exhibit 9E - Main board with Shields (Top) (APX N30)



APX N30 / APX N30 for Hazloc Model

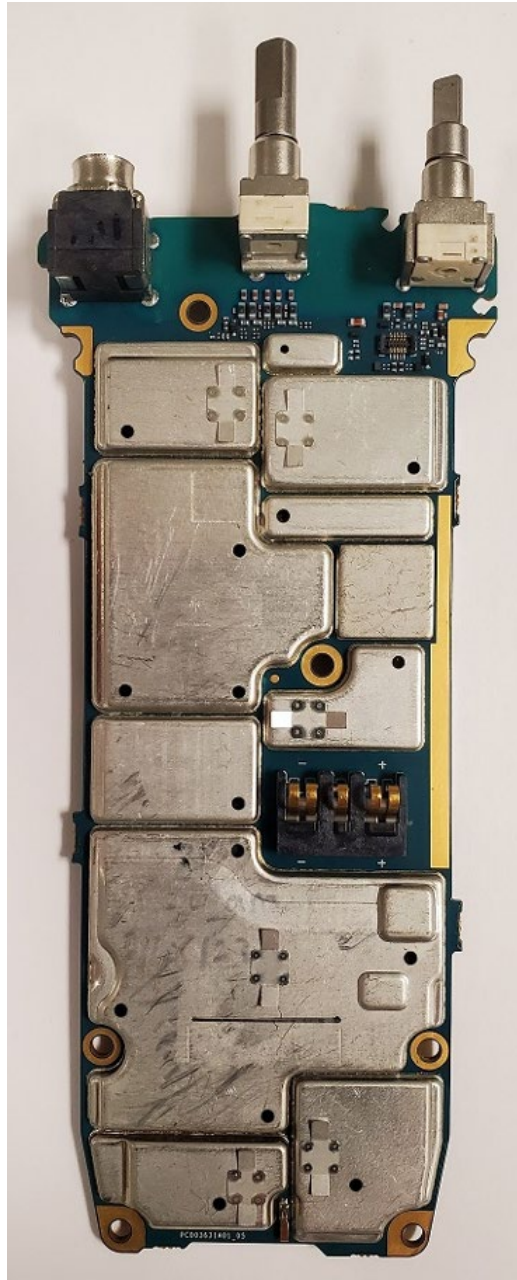
Exhibit 9F - Main board without Shields (Top) (APX N30)



BT/BTLE/WLAN Port

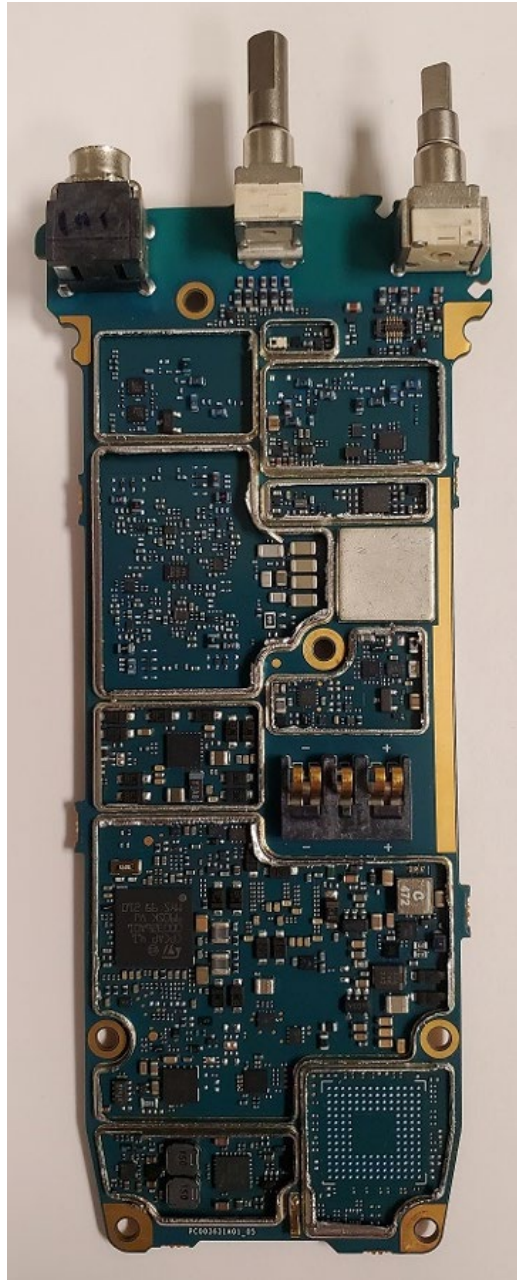
APX N30 / APX N30 for Hazloc Model

Exhibit 9G - Main board with Shields (Bottom) (APX N30)



APX N30 / APX N30 for Hazloc Model

Exhibit 9H - Main board without Shields (Bottom) (APX N30)



APX N30 / APX N30 for Hazloc Model

Exhibit 9I - Chassis and housing (Front side) (APX N50)



APX N50/ APX N50 for HAZLOC model

**Exhibit 9J - Main board with chassis and housing (Back side)
APX N50/ APX N50 for HAZLOC model)**



APX N50



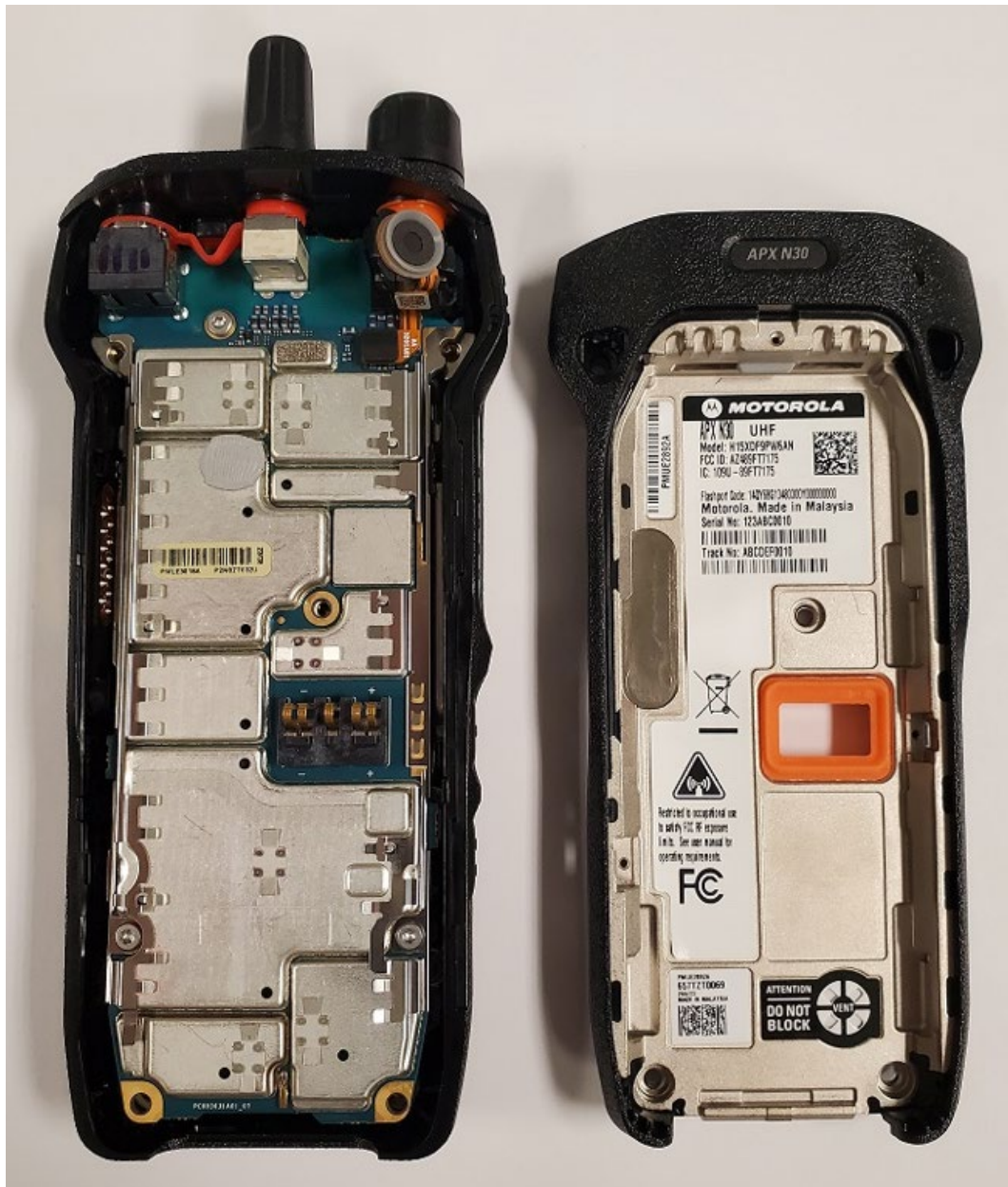
APX N50 for HAZLOC model

Exhibit 9K - Chassis and housing (Front side) (APX N30)

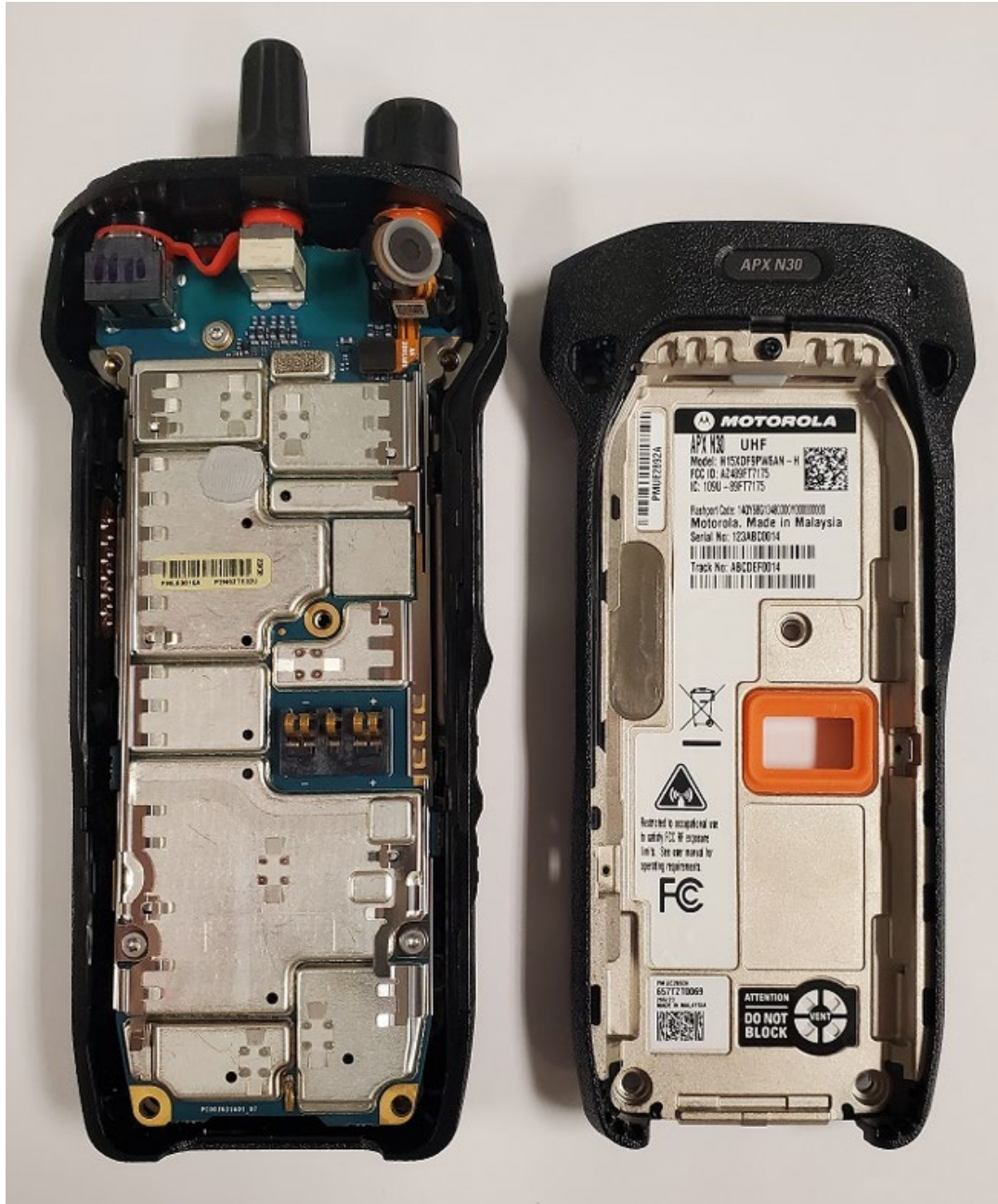


APX N30/ APX N30 for HAZLOC model

**Exhibit 9L - Main board with chassis and housing (Back side)
(APX N30/ APX N30 for HAZLOC model)**



APX N30



APX N30 for HAZLOC model

*** END ***