

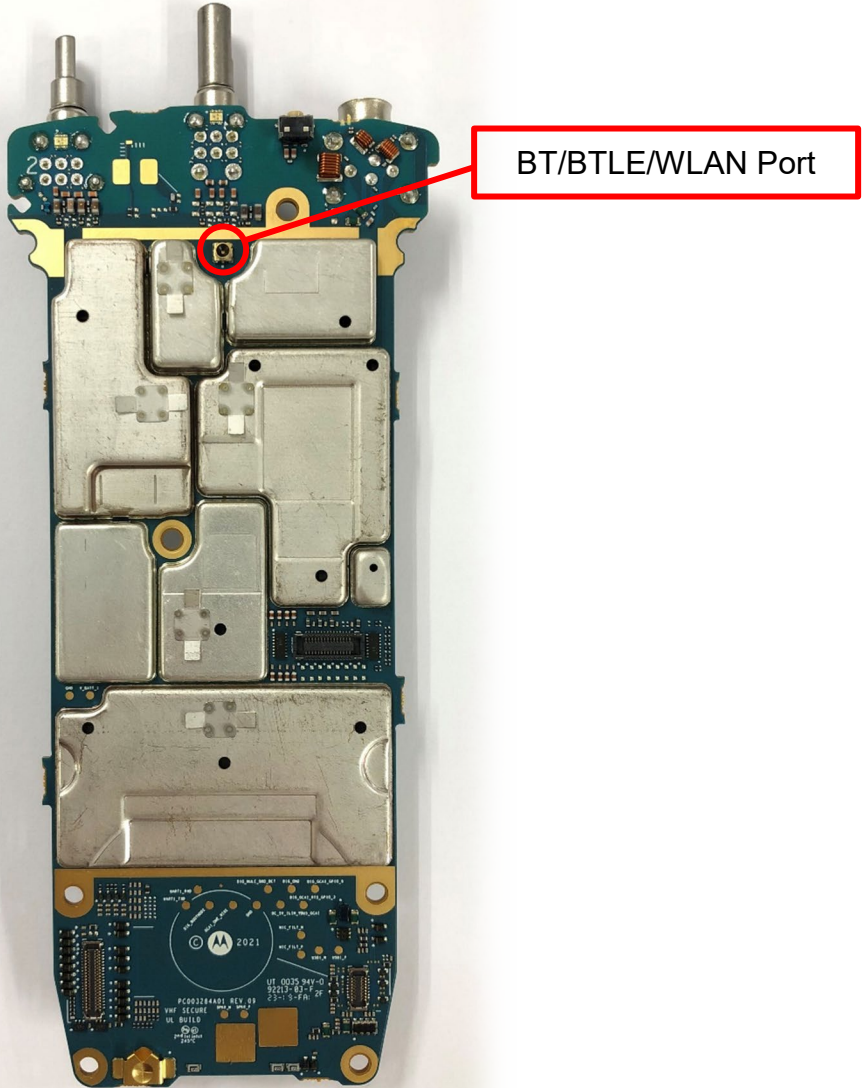
**EXHIBIT 9****Internal Photographs**

(Pursuant to FCC Part 2.1033(b)(7), 2.1033(c)(12) and RSP 100 Annex C)

The following photographs are attached.

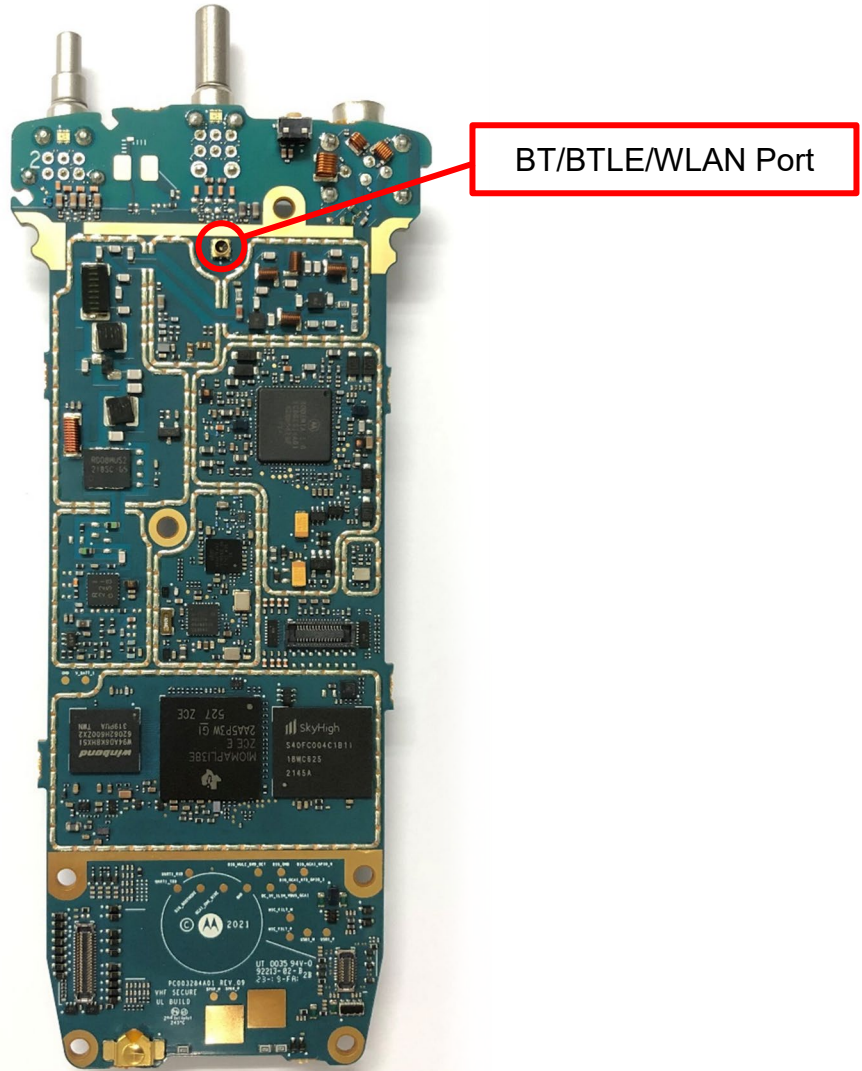
	<u>Exhibit</u>
1. Main board <u>with</u> Shields (Top) (APX N50)	9A
2. Main board <u>without</u> Shields (Top) (AXP N50)	9B
3. Main board <u>with</u> Shields (Bottom) (APX N50)	9C
4. Main board <u>without</u> Shields (Bottom)(APX N50)	9D
5. Main board <u>with</u> Shields (Top) (APX N30)	9E
6. Main board <u>without</u> Shields (Top) (APX N30)	9F
7. Main board <u>with</u> Shields (Bottom) (APX N30)	9G
8. Main board <u>without</u> Shields (Bottom) (APX N30)	9H
9. Chassis and housing (Front Side) (APX N50)	9I
10. Main board with chassis and housing (Back side) (APX N50/APX N50 for Hazloc Model)	9J
11. Chassis and housing (Front Side) (APX N30)	9K
12. Main board with chassis and housing (Back side) (APX N30/APXN30 for Hazloc Model)	9L

**Exhibit 9A - Main board with Shields (Top) APX N50**



APX N50 / APX N50 For Hazloc Model

**Exhibit 9B - Main board without Shields (Top) (APX N50)**



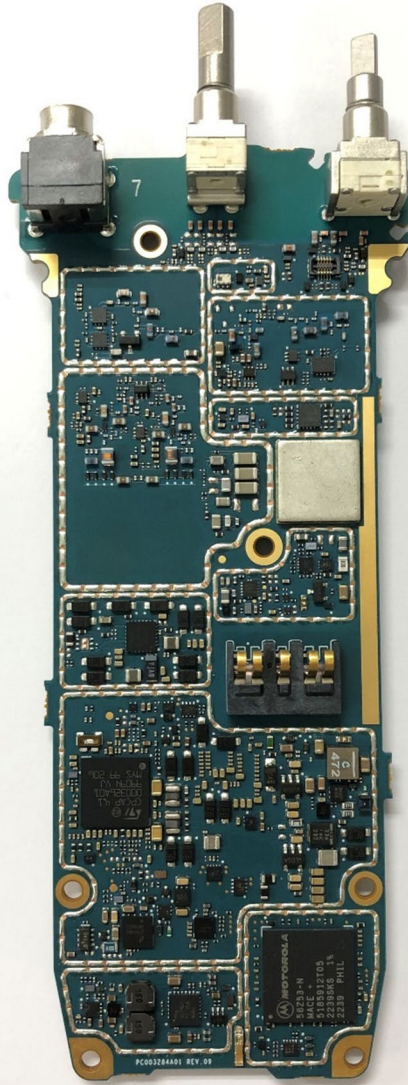
APX N50 / APX N50 For Hazloc Model

**Exhibit 9C - Main board with Shields (Bottom) (APX N50)**



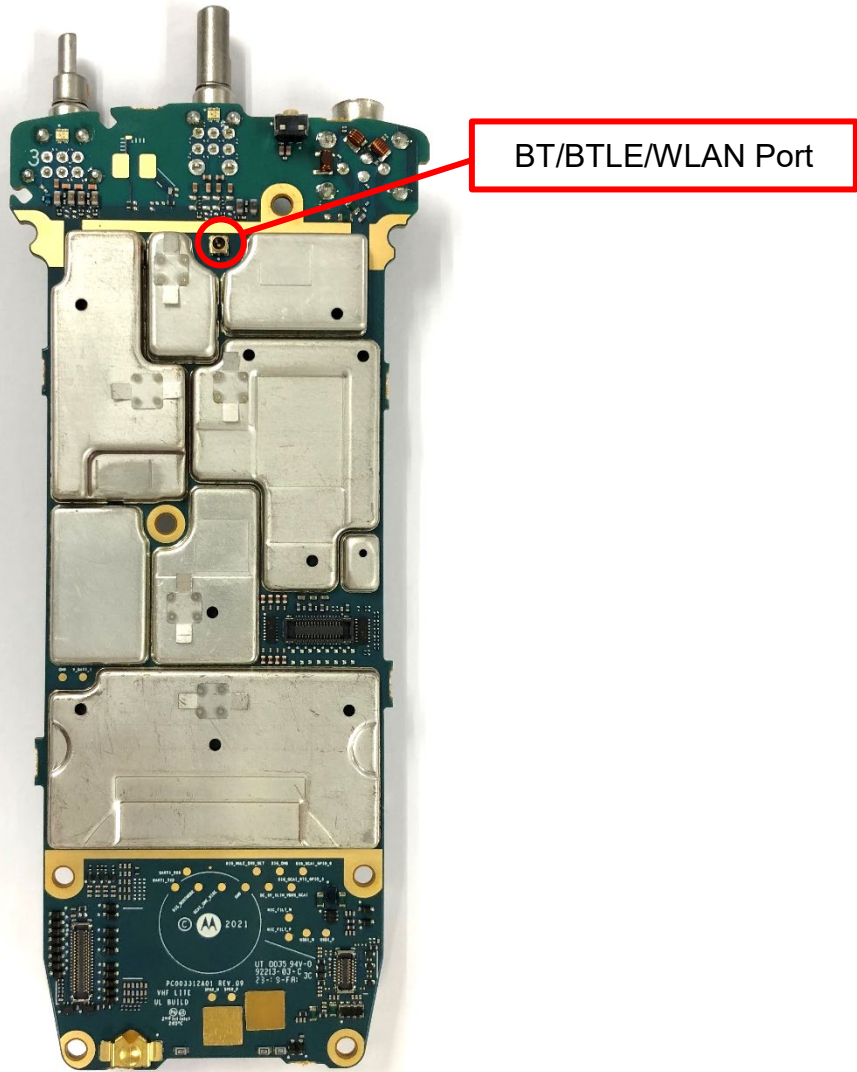
APX N50 / APX N50 For Hazloc Model

**Exhibit 9D - Main board without Shields (Bottom) (APX N50)**



APX N50 / APX N50 For Hazloc Model

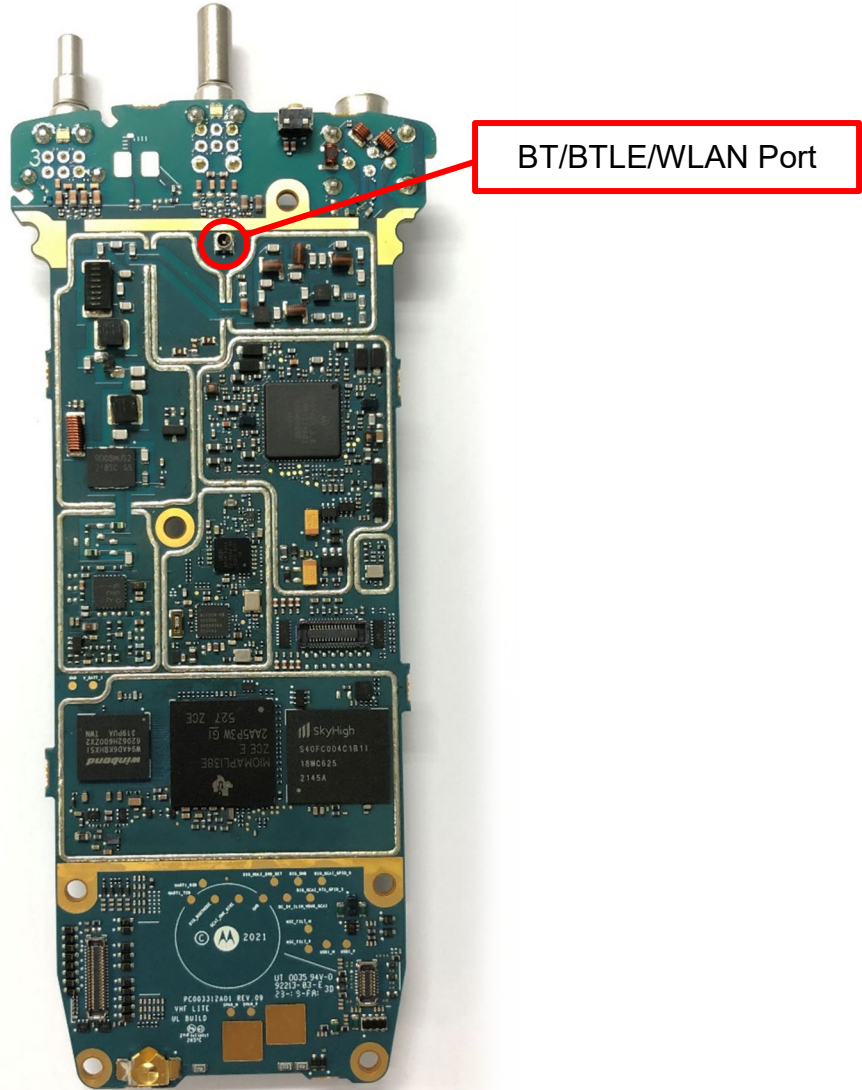
**Exhibits 9E - Main board with Shields (Top) (APX N30)**



APX N30 / APX N30 for Hazloc Model



**Exhibit 9F - Main board without Shields (Top) (APX N30)**



APX N30 / APX N30 for Hazloc Model

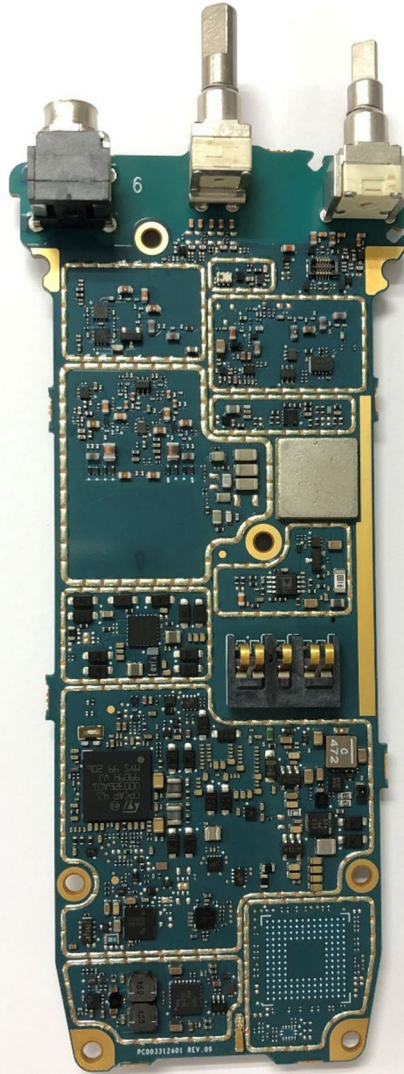
**Exhibit 9G - Main board with Shields (Bottom) (APX N30)**



APX N30 / APX N30 for Hazloc Model



**Exhibit 9H - Main board without Shields (Bottom) (APX N30)**



APX N30 / APX N30 for Hazloc Model

**Exhibit 9I - Chassis and housing (Front side) (APX N50)**



APX N50/ APX N50 for HAZLOC model

**Exhibit 9J- Main board with chassis and housing (Back side)**  
**(APX N50/ APX N50 for HAZLOC model)**



APX N50





APX N50 for HAZLOC model

**Exhibit 9K - Chassis and housing (Front side) (APX N30)**



APX N30/ APX N30 for HAZLOC model



**Exhibit 9L - Main board with chassis and housing (Back side)  
(APX N30/ APX N30 for HAZLOC model)**



APX N30





APX N30 for HAZLOC model

\*\*\* END \*\*\*