

**EXHIBIT 9**

**Internal Photographs**

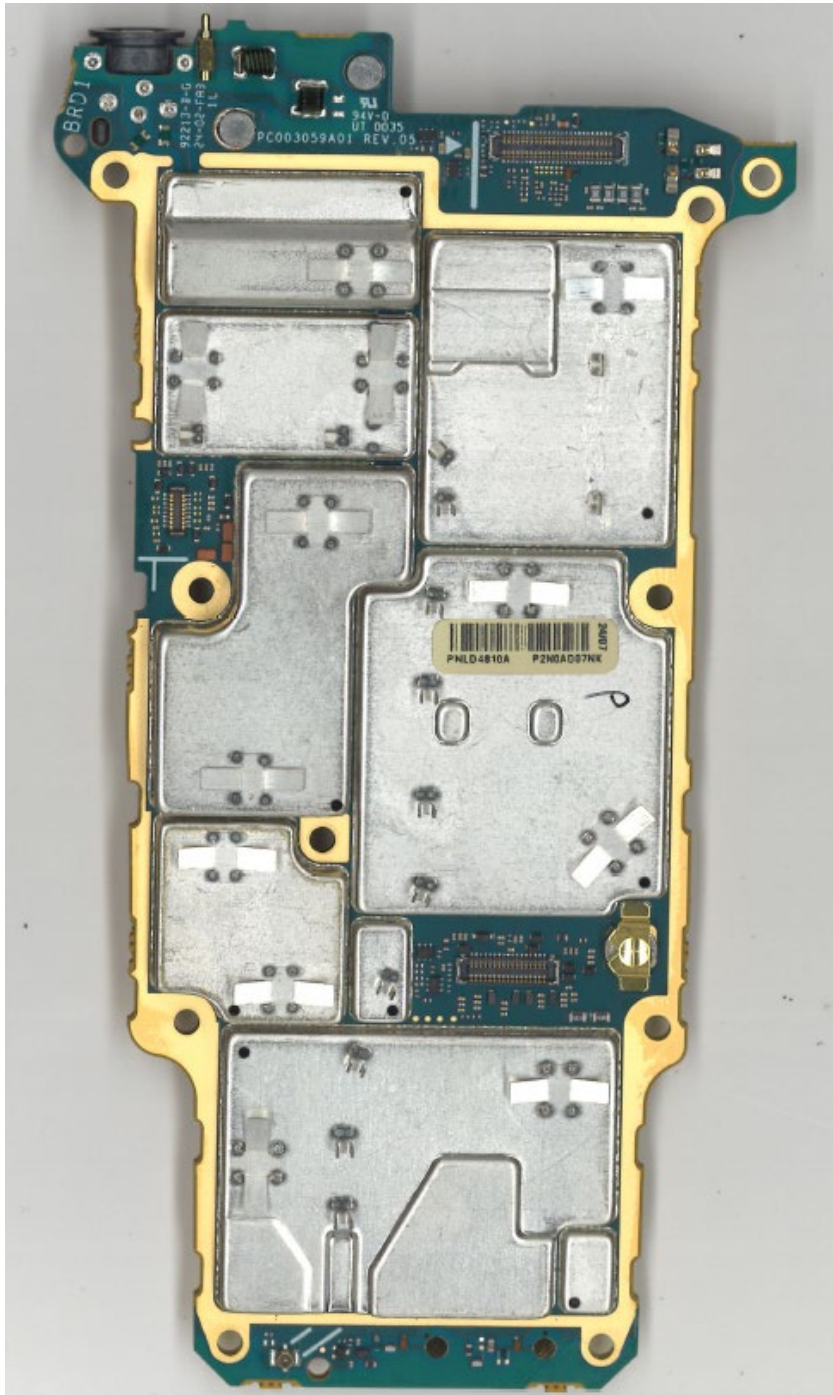
(Pursuant to FCC Part 2.1033(b)(7), 2.1033(c)(12) and RSP 100 Annex C)

The following photographs are attached.

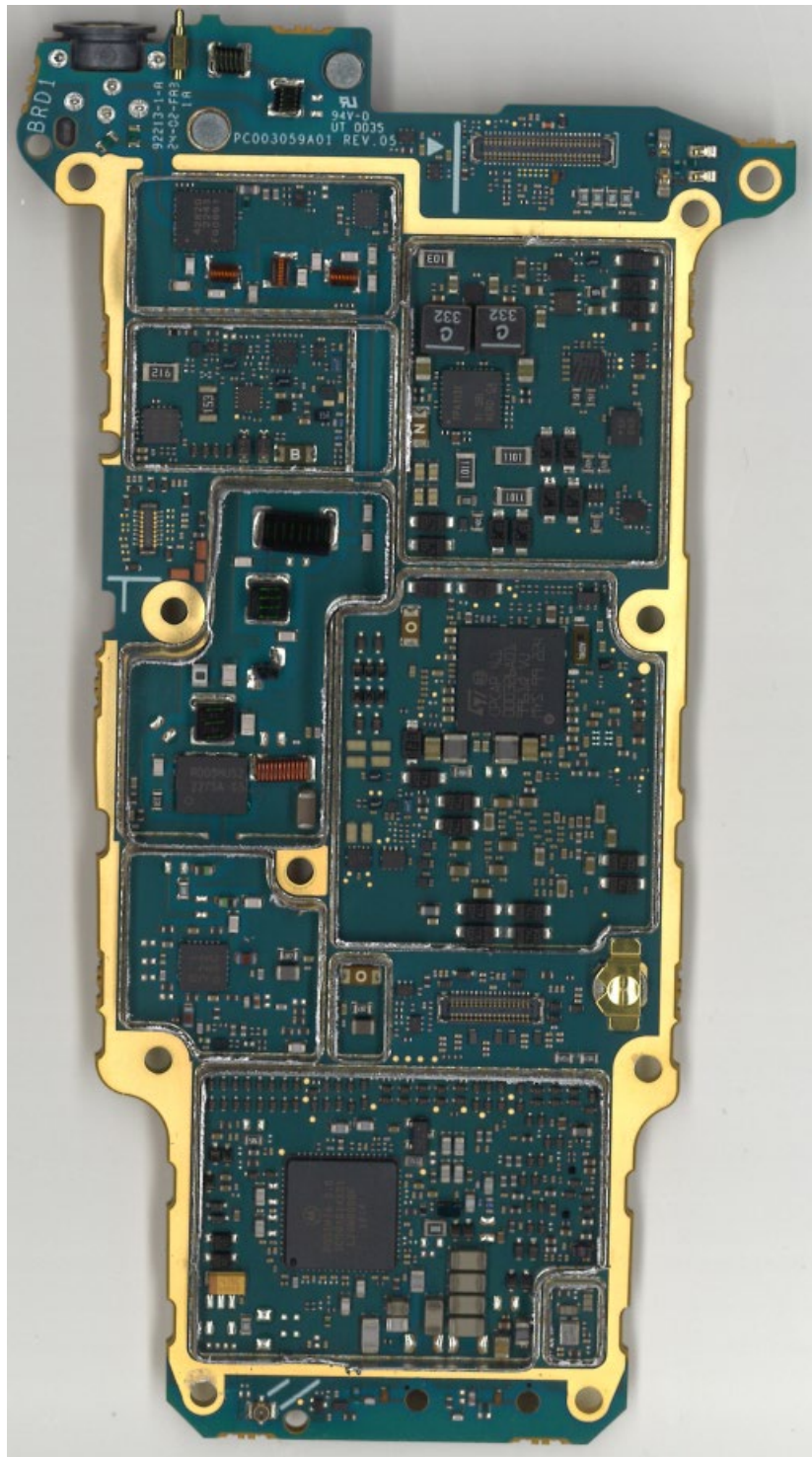
Exhibit

- |     |   |    |
|-----|---|----|
| 1.  | Main board <u>with</u> Shields (Top)                        | 9A |
| 2.  | Main board <u>without</u> Shields (Top)                     | 9B |
| 3.  | Main board <u>with</u> Shields (Bottom)                     | 9C |
| 4.  | Main board <u>without</u> Shields (Bottom)                  | 9D |
| 5.  | Main board <u>with</u> chassis and housing for (Front Side) | 9E |
| 6.  | Chassis and housing (Back Side)                             | 9F |
| 7.  | AP board <u>with</u> Shields (Top)                          | 9G |
| 8.  | AP board <u>without</u> Shields (Top)                       | 9H |
| 9.  | AP board <u>with</u> Shields (Bottom)                       | 9I |
| 10. | AP board <u>without</u> Shields (Bottom)                    | 9J |

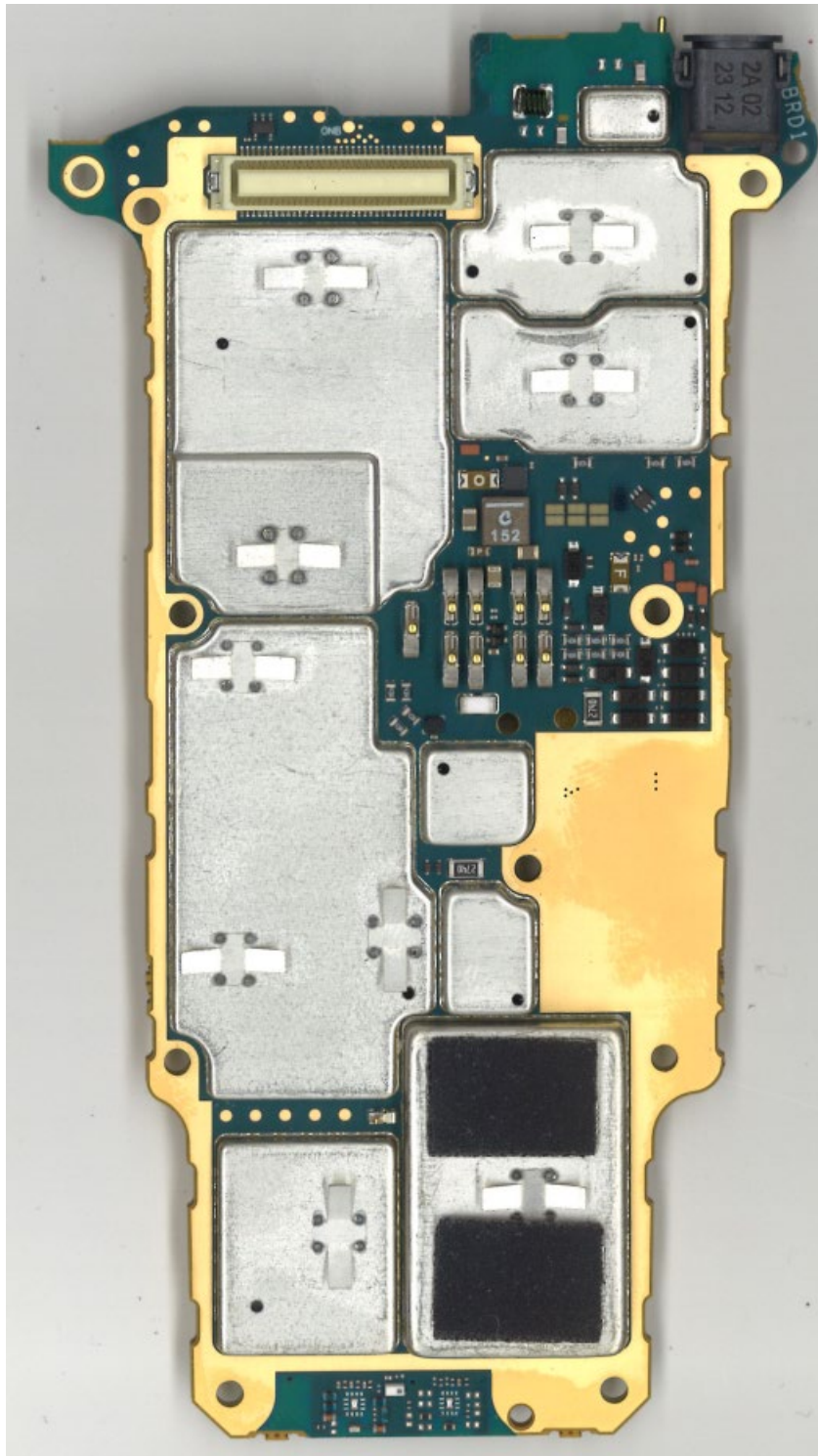
**Exhibit 9A – MAIN board with Shields (Top)**



**Exhibit 9B – MAIN board without Shields (Top)**

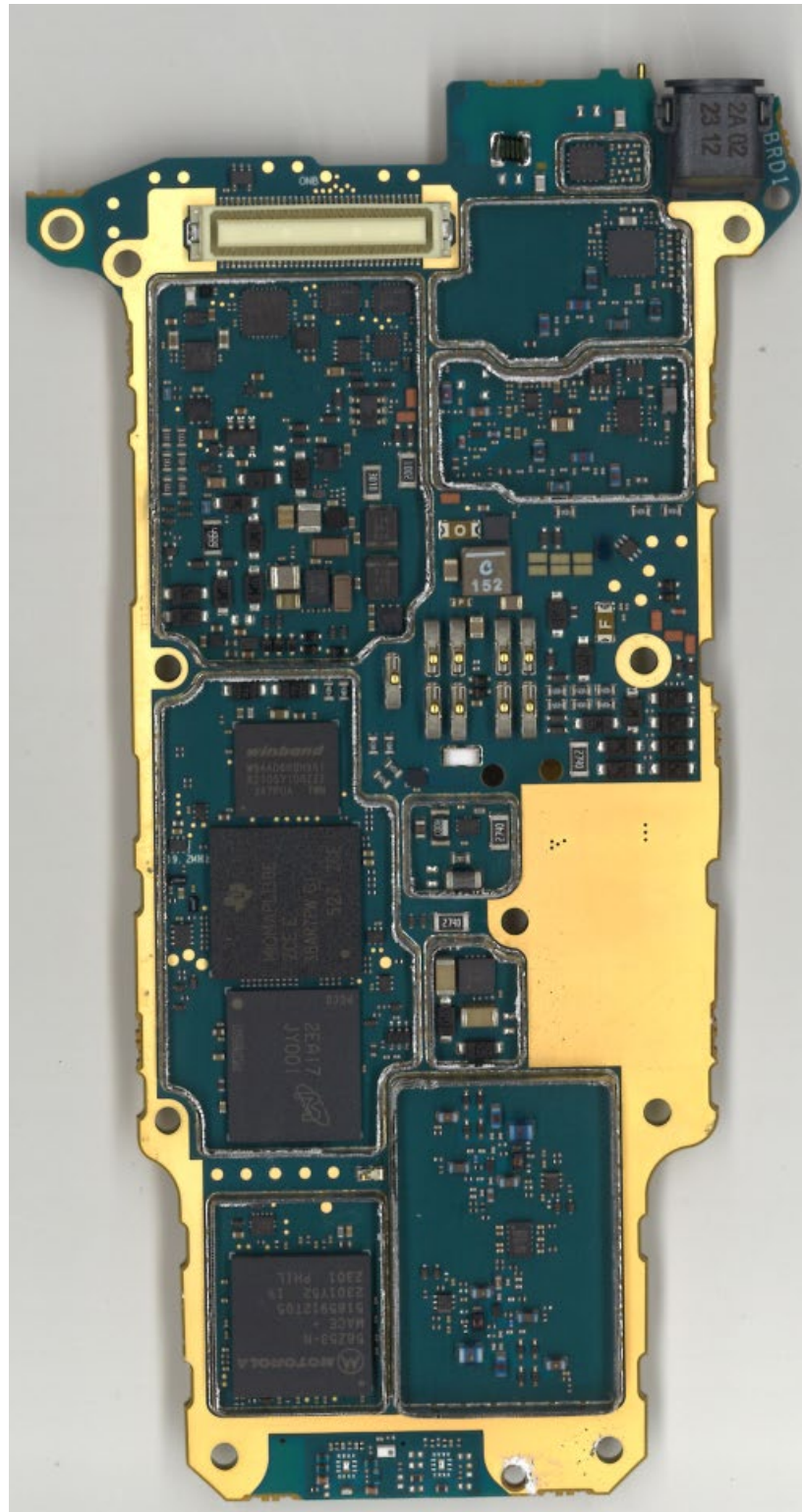


**Exhibit 9C – MAIN board with Shields (Bottom)**





**Exhibit 9D – MAIN board without Shields (Bottom)**



**Exhibit 9E – MAIN boards with chassis and housing for (Front Side)**

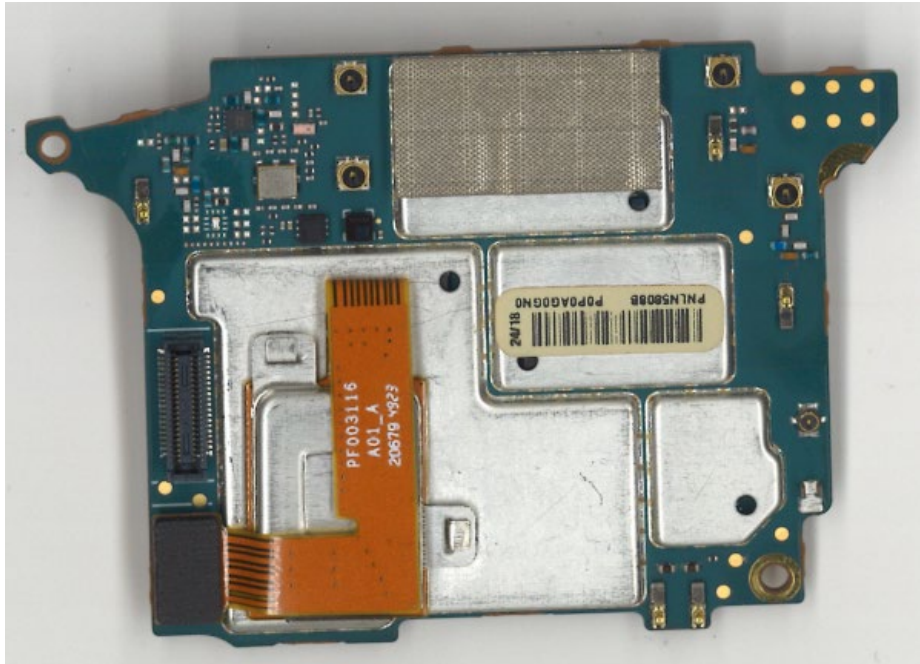




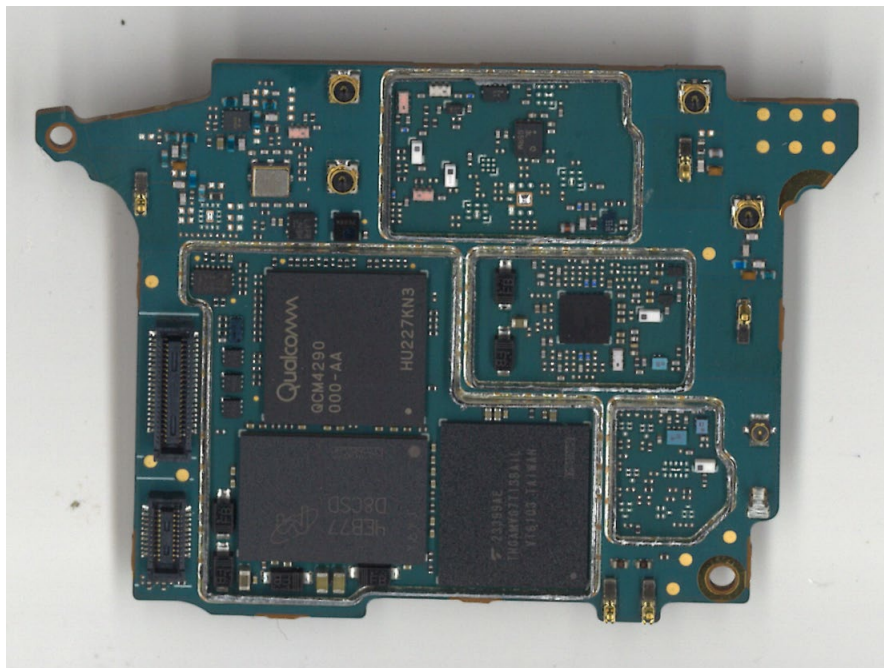
**Exhibit 9F – Chassis and housing (Back Side)**



**Exhibit 9G – AP board with Shields (Top)**

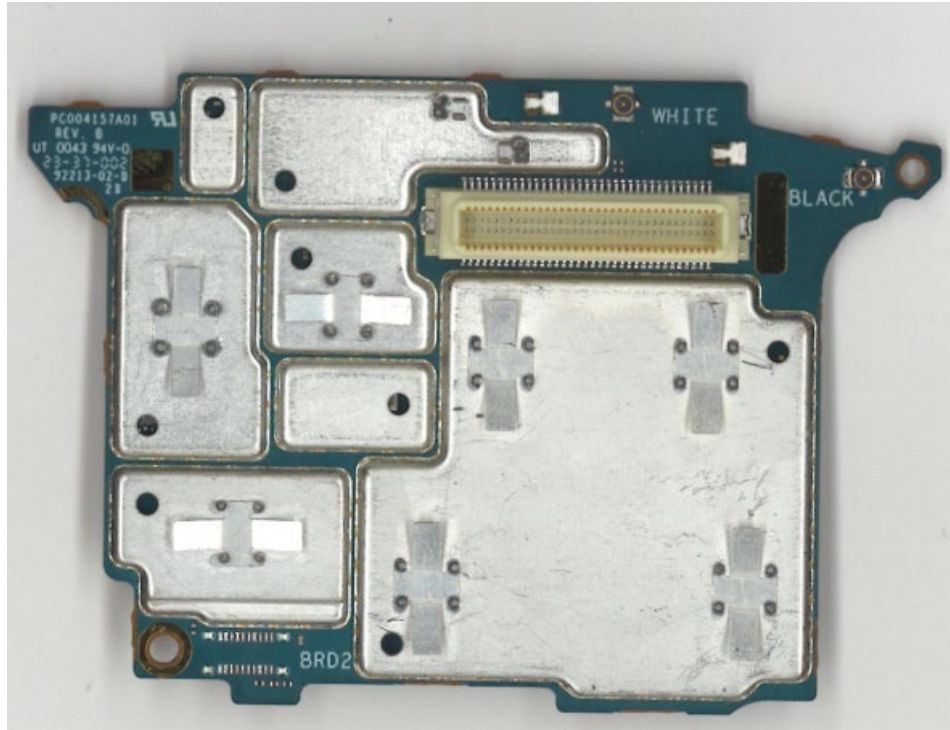


**Exhibit 9H – AP board without Shields (Top)**

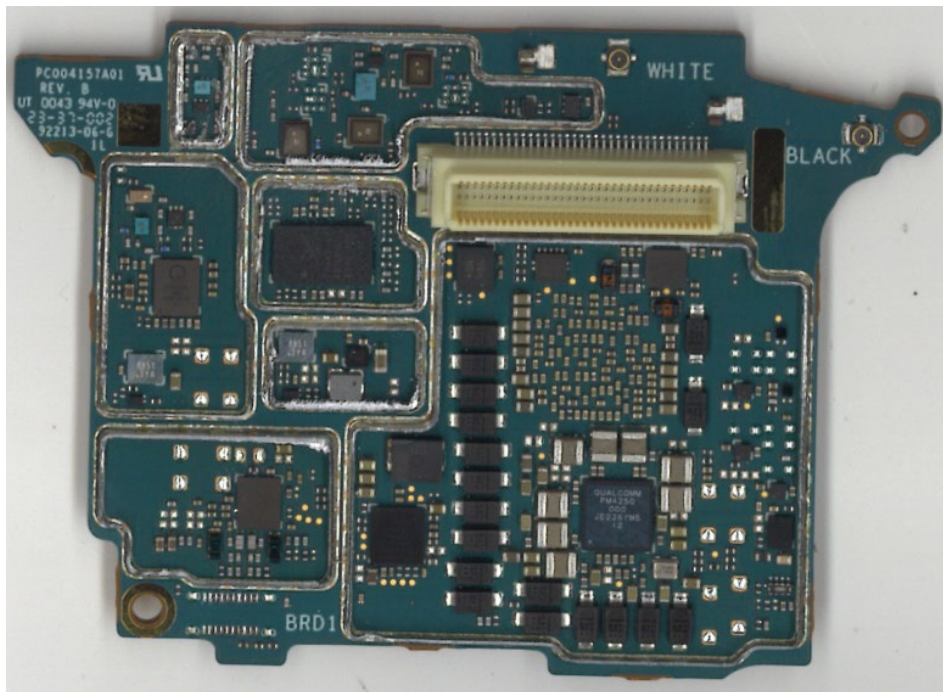




**Exhibit 9I – AP board with Shields (Bottom)**



**Exhibit 9J – AP board without Shields (Bottom)**



\*\*\* END \*\*\*