

**EXHIBIT 1**

**IDENTIFICATION LABEL**

(Pursuant to FCC Part 2.1033(c)(11), 2.1033(b)(7) and RSP 100 Annex C and Sec 3)

LOCATION

- See the Attached Photograph or Sketch
- Bottom of Radio
- Top of Radio
- Back of Radio
- Back of Radio under Belt Clip
- In battery compartment

TYPE

- The label is a polyester film laminate with a pressure sensitive adhesive backing. The adhesive is a permanent type acrylic with the minimum peel strength of 40 oz/inch.

MARKINGS (TEXT)

- See the Attached Photograph and Exhibit 3 for the actual location of the IC label on the device.
- Label Attached Below.
- See Attached Drawing.

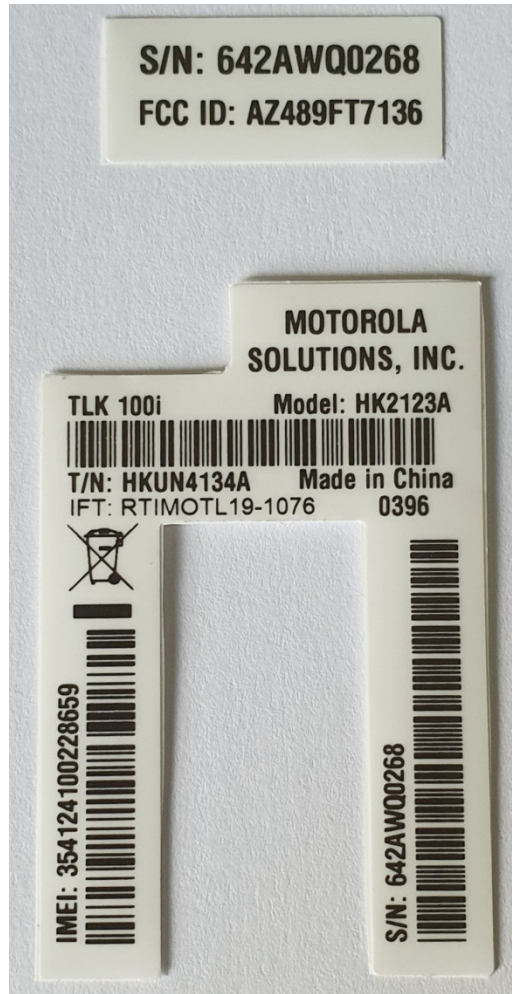


Figure 1: FCC Label



Figure 2: IC Label