

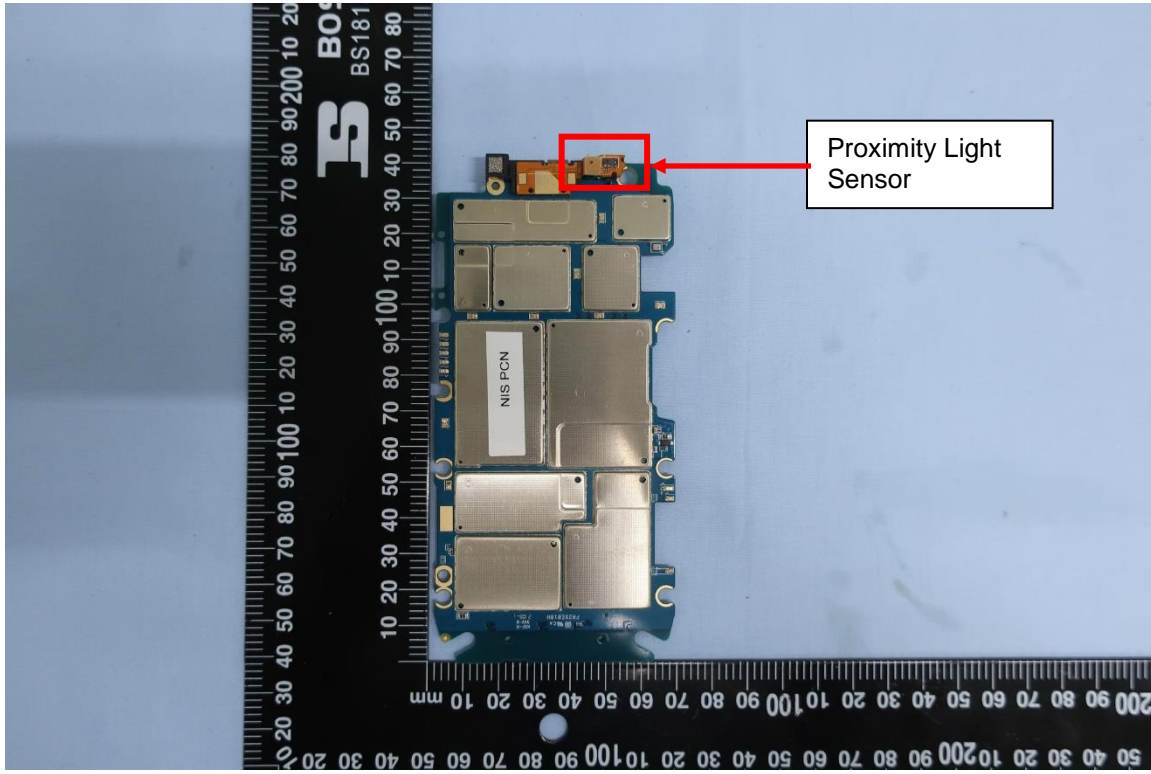
EXHIBIT 9**Internal Photographs**

(Pursuant to FCC Part 2.1033(b)(7) and 2.1033(c)(12))

The following photographs are attached.

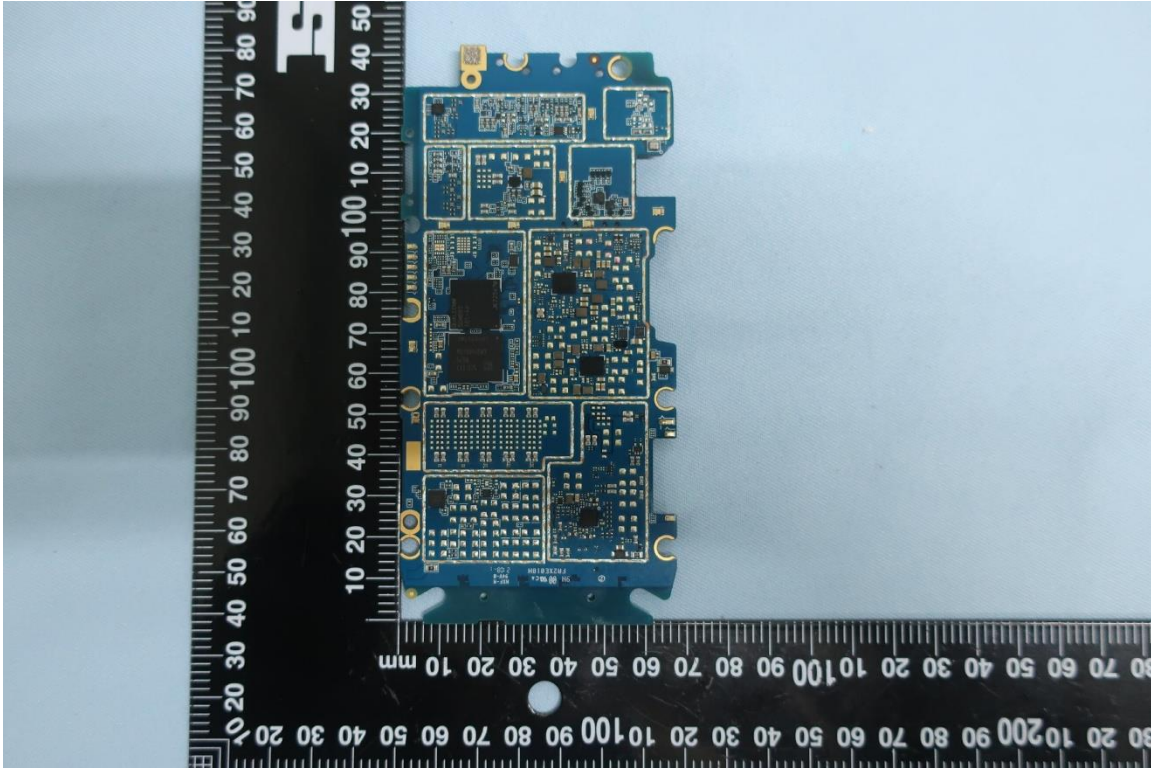
	<u>Exhibit</u>
1. RF board <u>with</u> shields (Top)	9A
2. RF board <u>without</u> shields (Top)	9B
3. Receive/Mic/Speaker PA/Camera/G-sensor /top key circuits on PCBA	9C
4. SAR sensor/DRX circuits on PCBA	9D
5. CPU/Memory and PMU circuit on PCBA	9E
6. PMU circuit on PCBA	9F
7. LCD control circuit on PCBA	9G
8. Audio Codec circuit on PCBA	9H
9. RF board <u>with</u> shields (Bottom)	9I
10. RF board <u>without</u> shields (Bottom)	9J
11. WWAN and WiFi/BT circuit on PCBA	9K
12. APT and transceiver circuit on PCBA	9L
13. SIM2 card connector CPU power decoupling capacitor circuit on PCBA	9M
14. SIM1 card connector T-Flash connector	9N
15. PCB board with chassis (Top) and rear housing	9O
16. PCB board (Bottom) and front housing	9P

Exhibit 9A – RF board with shields (Top) (HK2136A, HK2156A, HK2137A)



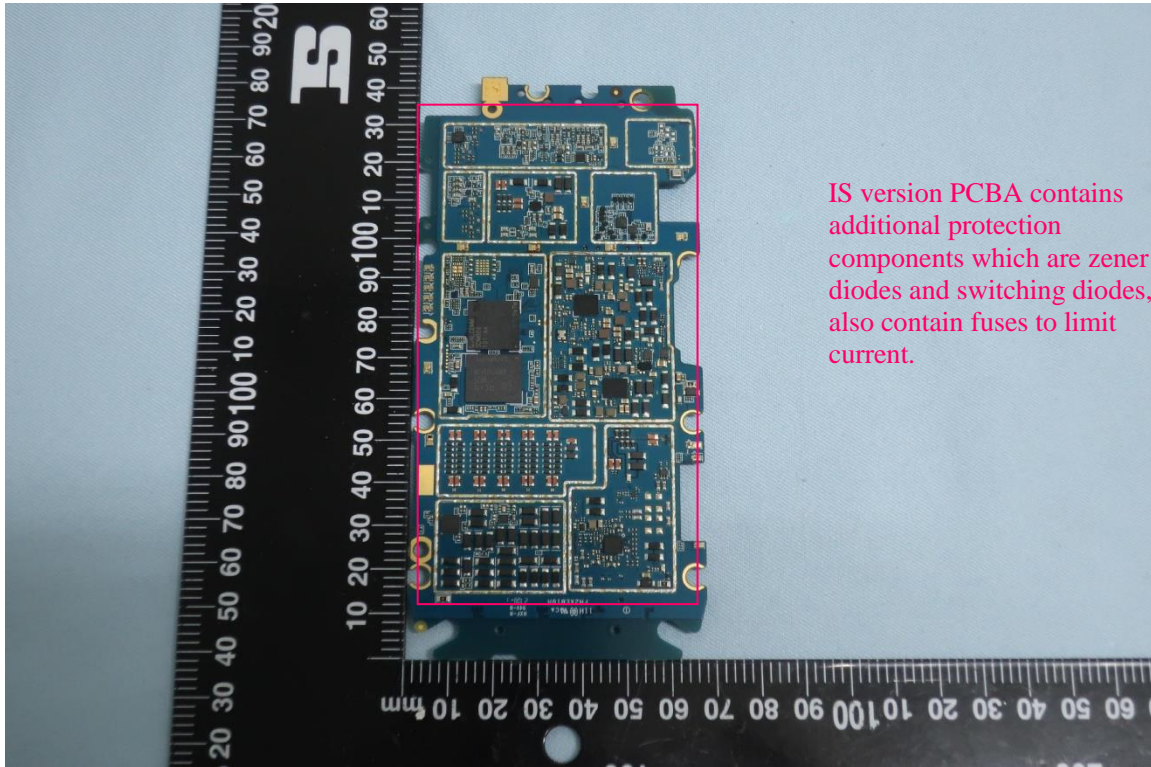
RF board with shields (Top)

Exhibit 9B – RF board without shields (Top) (HK2136A, HK2156A)



RF board without shields (Top)

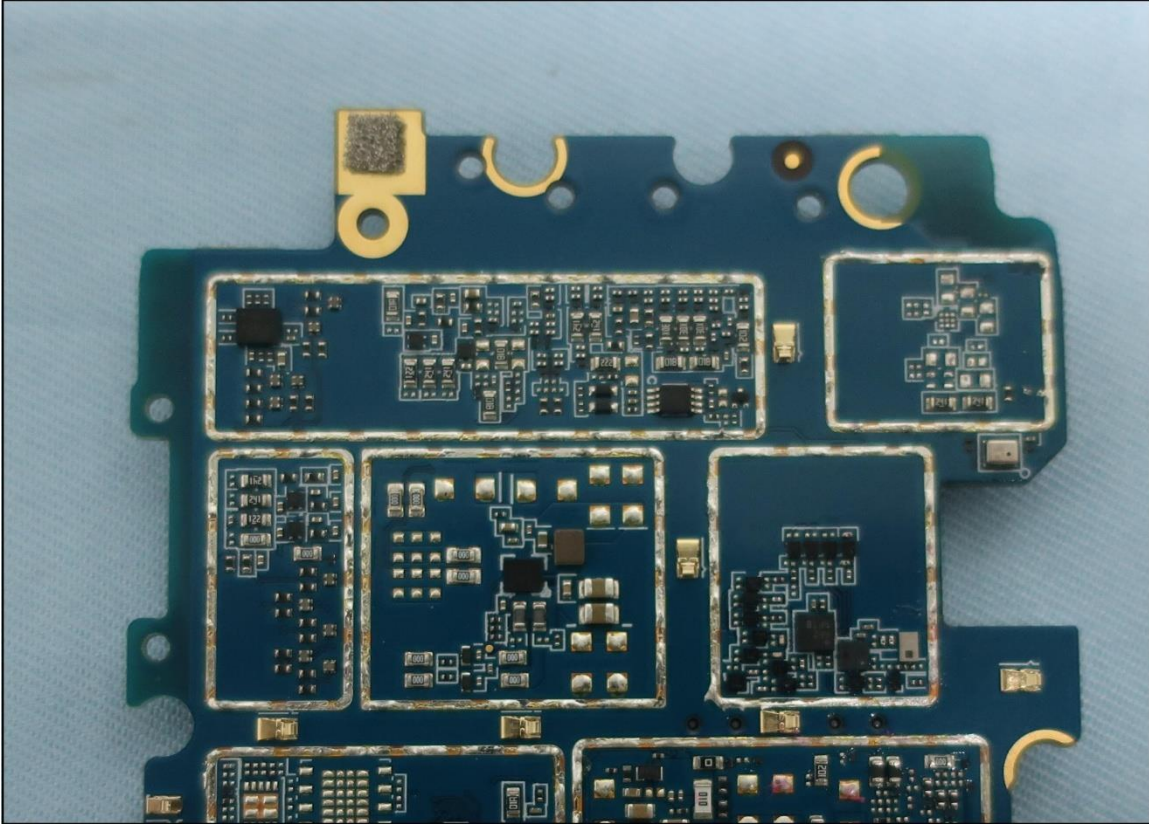
Exhibit 9B – RF board without shields (Top) (HK2137A)



IS version PCBA contains additional protection components which are zener diodes and switching diodes, also contain fuses to limit current.

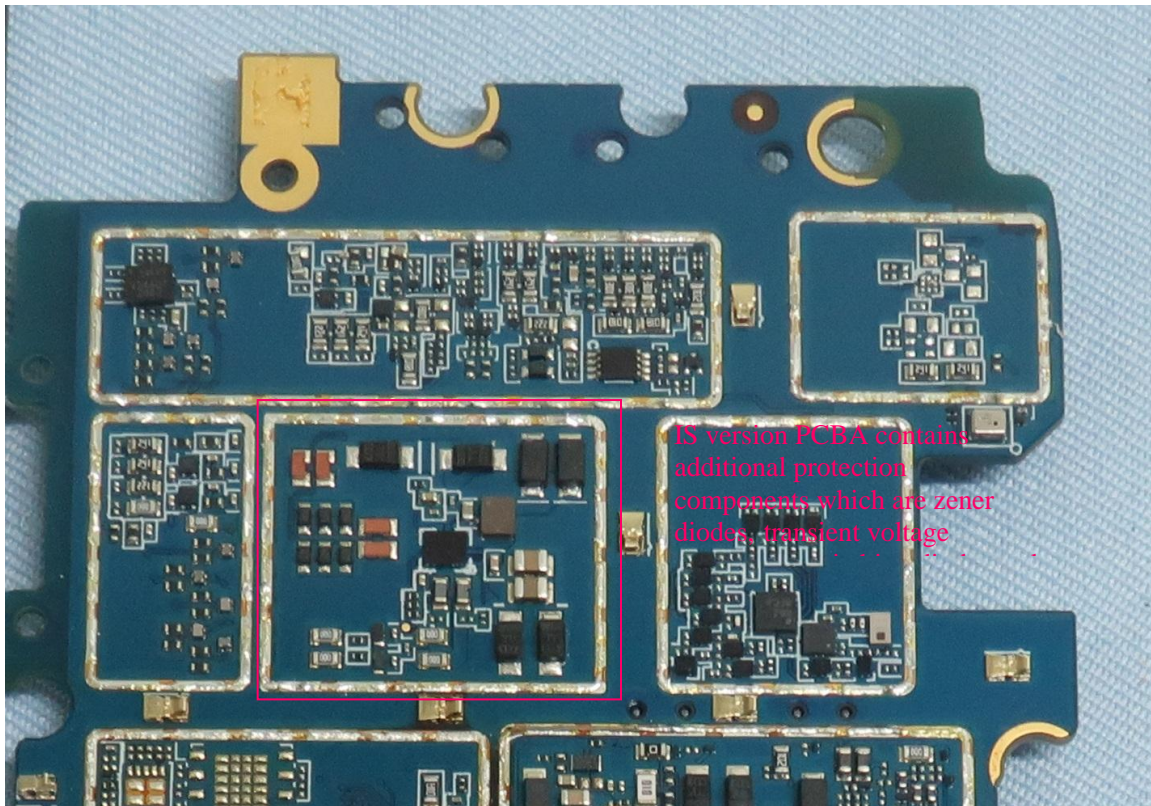
RF board without shields (Top)

Exhibit 9C – Receive/Mic/Speaker PA/Camera/G-sensor/top key circuits on PCBA
(HK2136A, HK2156A)



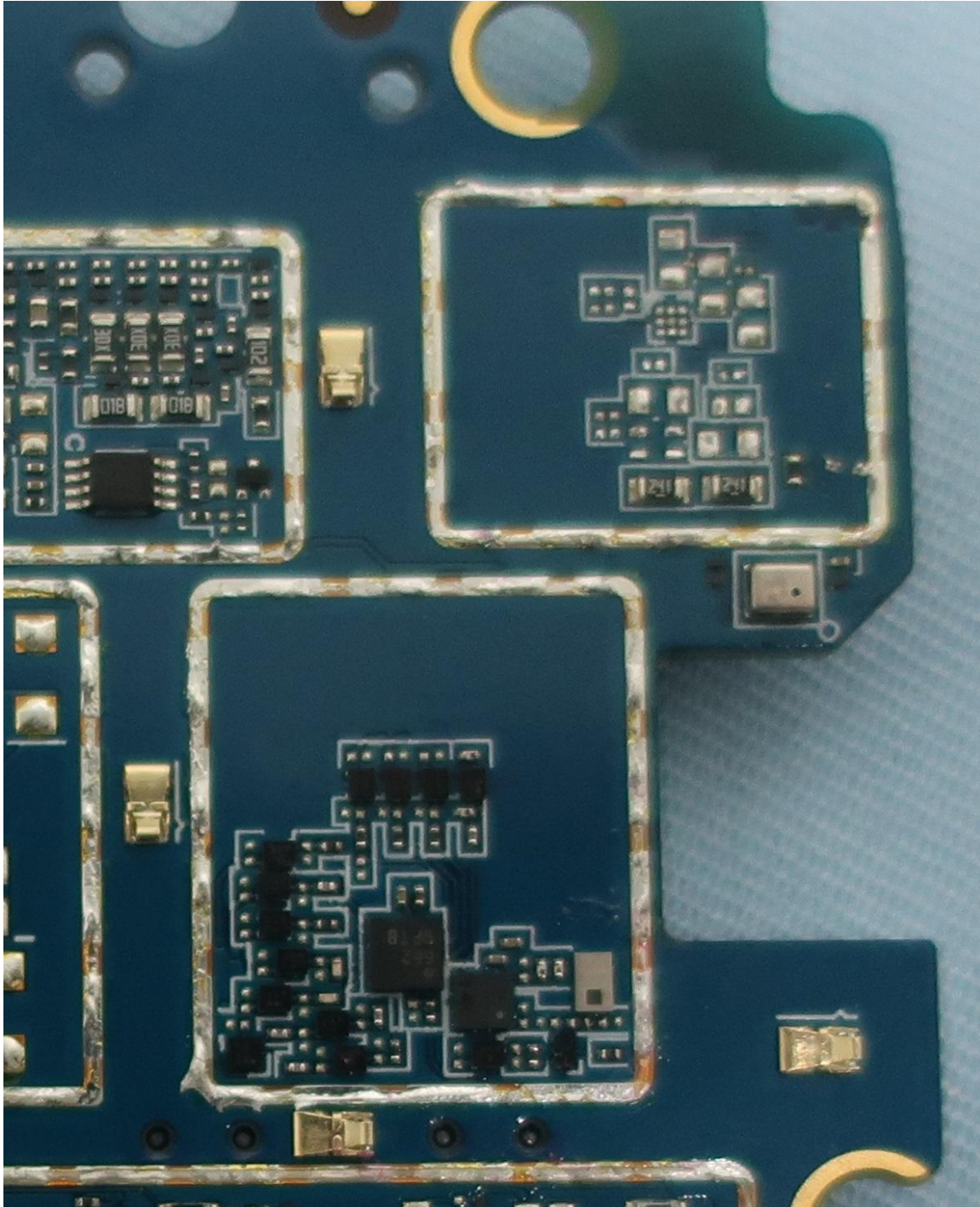
Receive/Mic/Speaker PA/Camera/G-sensor/top key circuits on PCBA

Exhibit 9C – Receive/Mic/Speaker PA/Camera/G-sensor/top key circuits on PCBA (HK2137A)



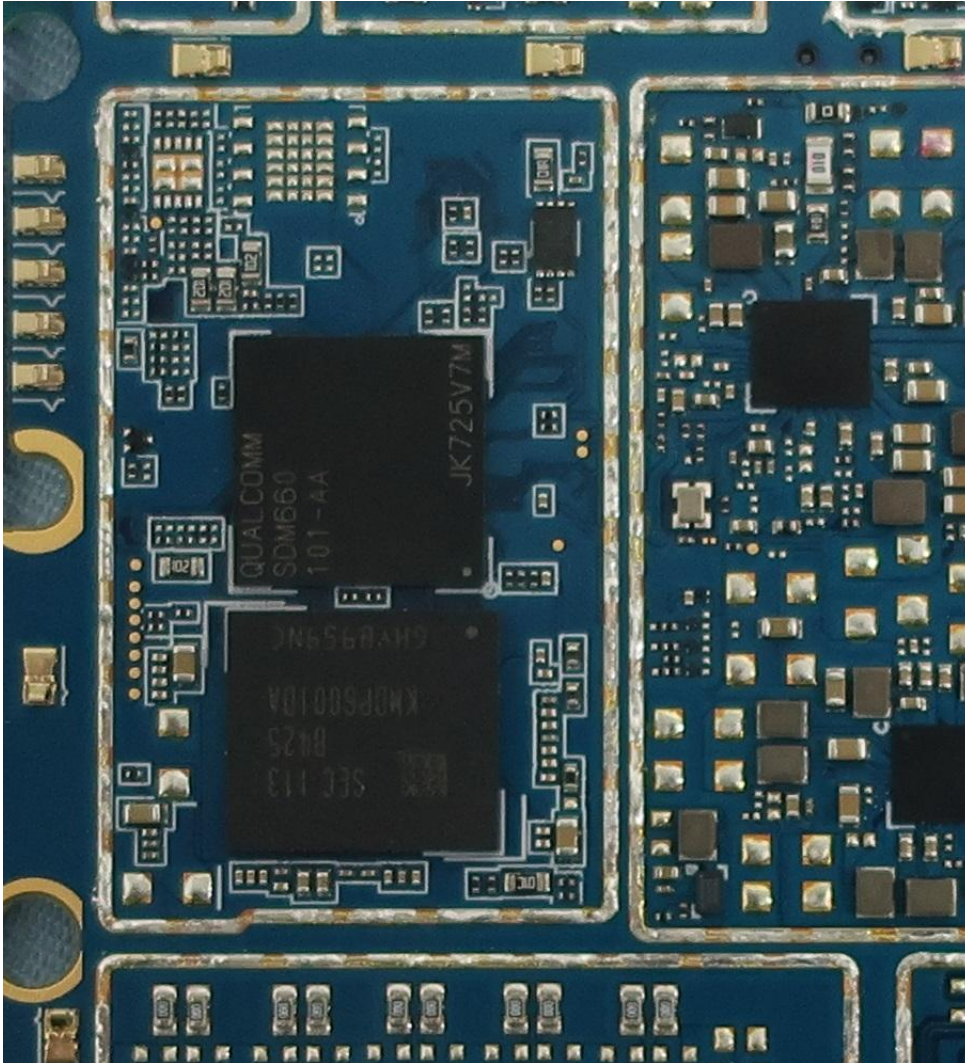
Receive/Mic/Speaker PA/Camera/G-sensor/top key circuits on PCBA

Exhibit 9D – SAR sensor/DRX circuits on PCBA (HK2136A, HK2156A, HK2137A)



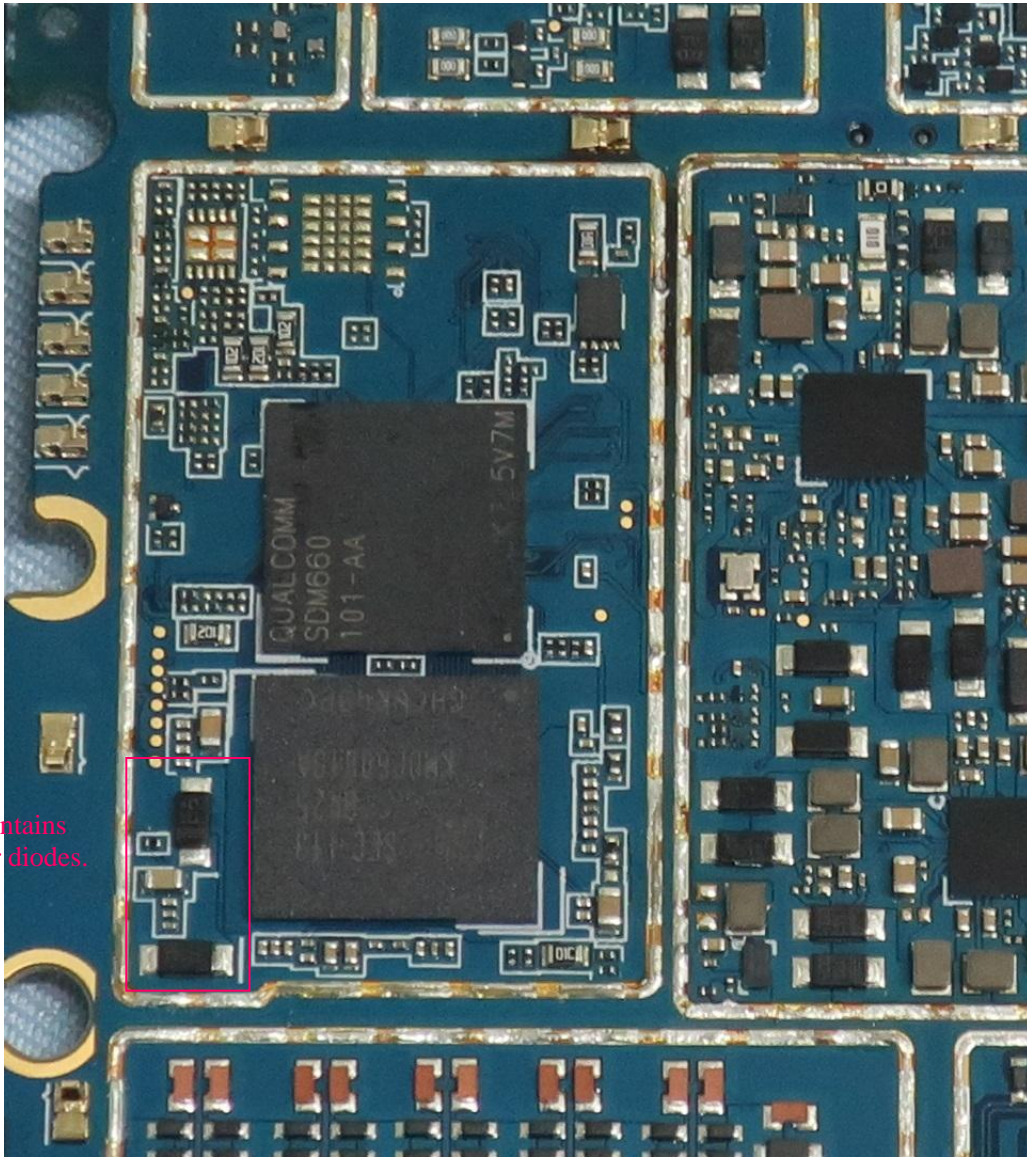
SAR sensor/DRX circuits on PCBA

Exhibit 9E – CPU/Memory and PMU circuit on PCBA (HK2136A, HK2156A)



CPU/Memory and PMU circuit on PCBA

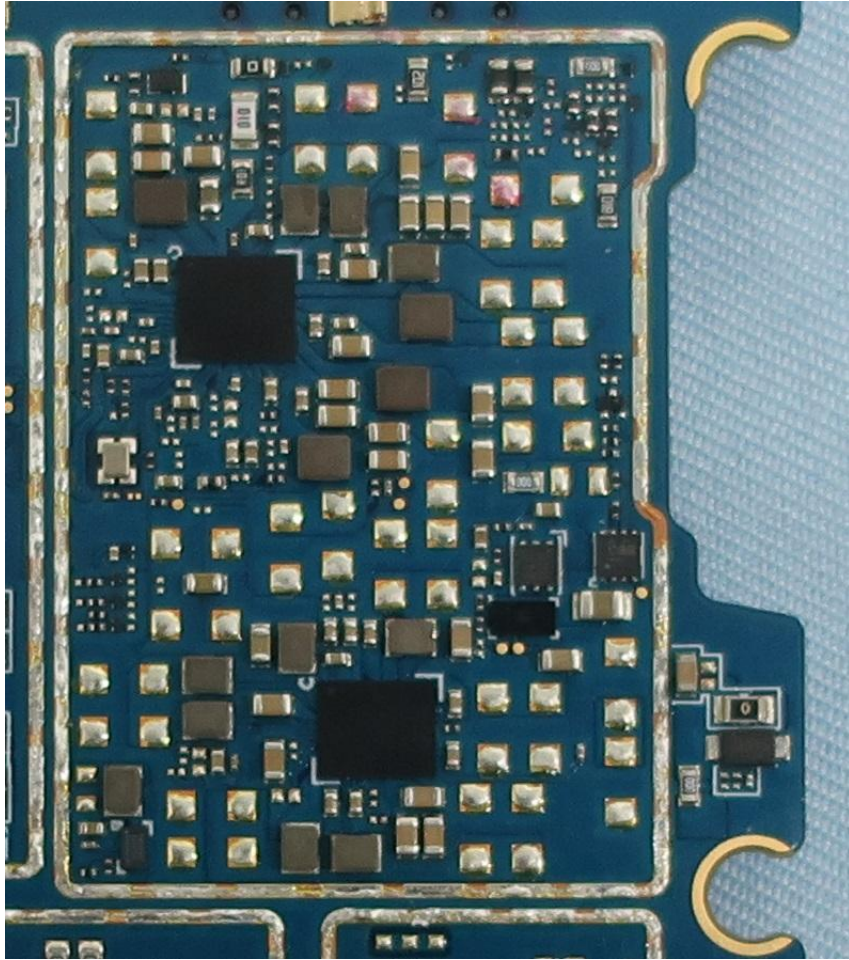
Exhibit 9E – CPU/Memory and PMU circuit on PCBA (HK2137A)



IS version PCBA contains additional two zener diodes.

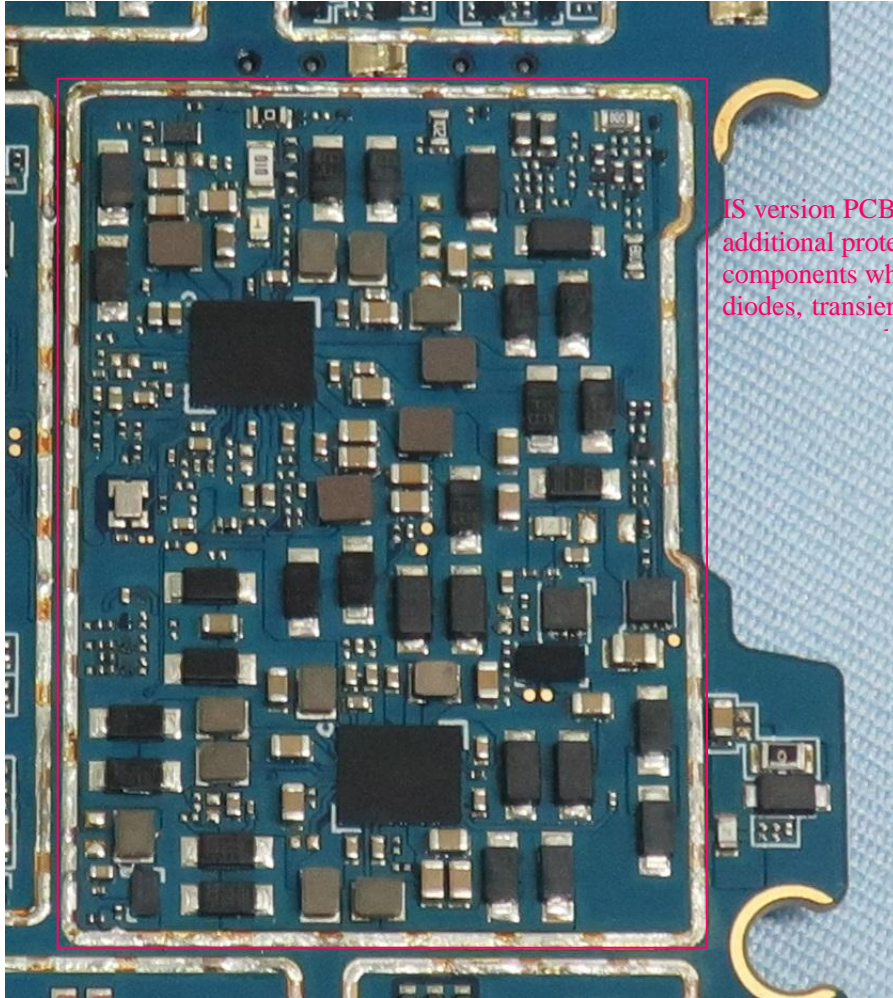
CPU/Memory and PMU circuit on PCBA

Exhibit 9F – PMU circuit on PCBA (HK2136A, HK2156A)



PMU circuit on PCBA

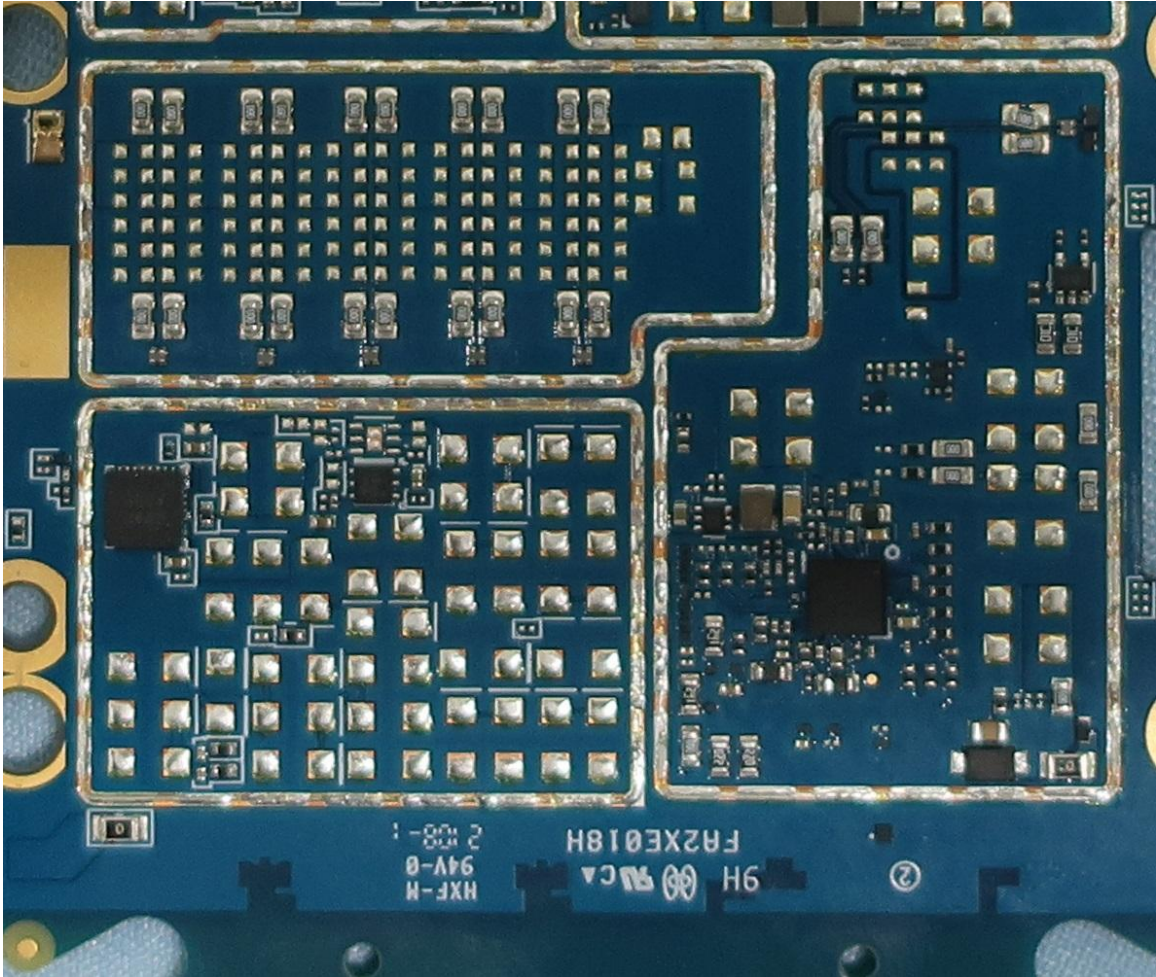
Exhibit 9F – PMU circuit on PCBA (HK2137A)



IS version PCBA contains additional protection components which are zener diodes, transient voltage

PMU circuit on PCBA

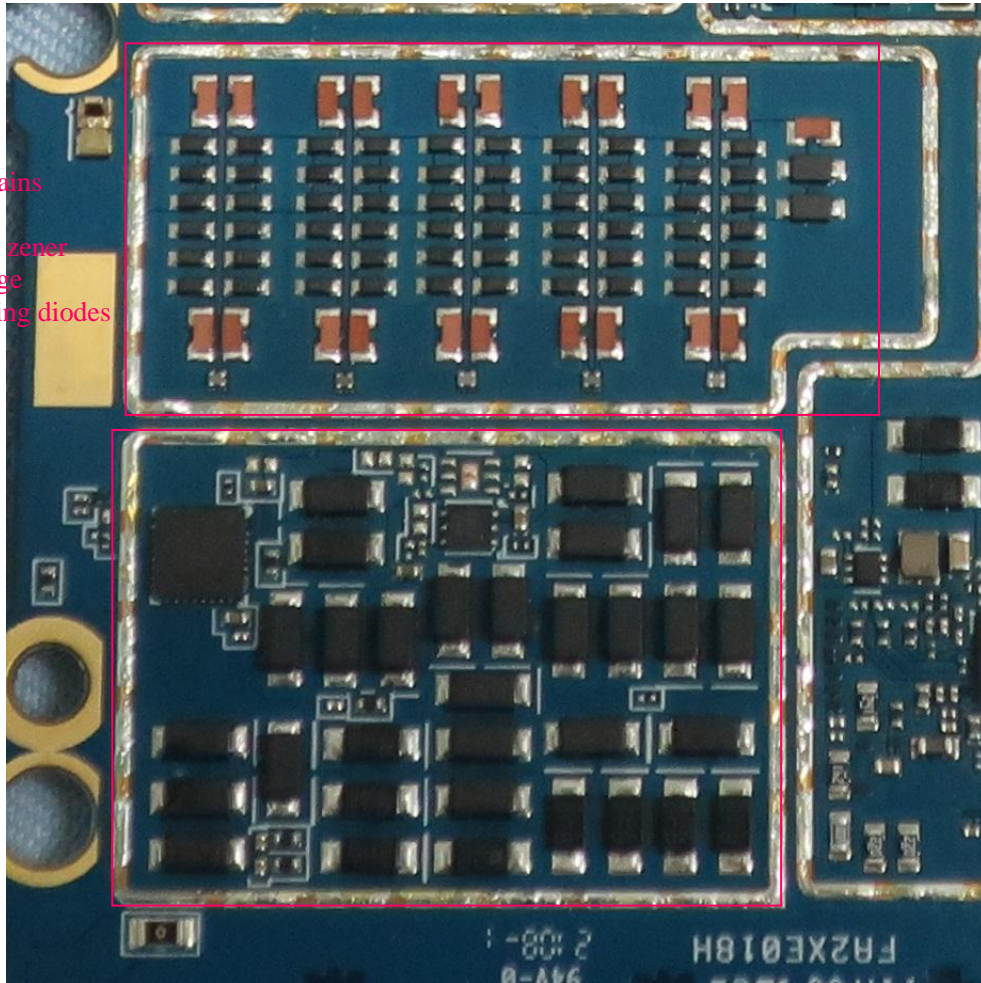
Exhibit 9G – LCD control circuit on PCBA (HK2136A, HK2156A)



LCD control circuit on PCBA

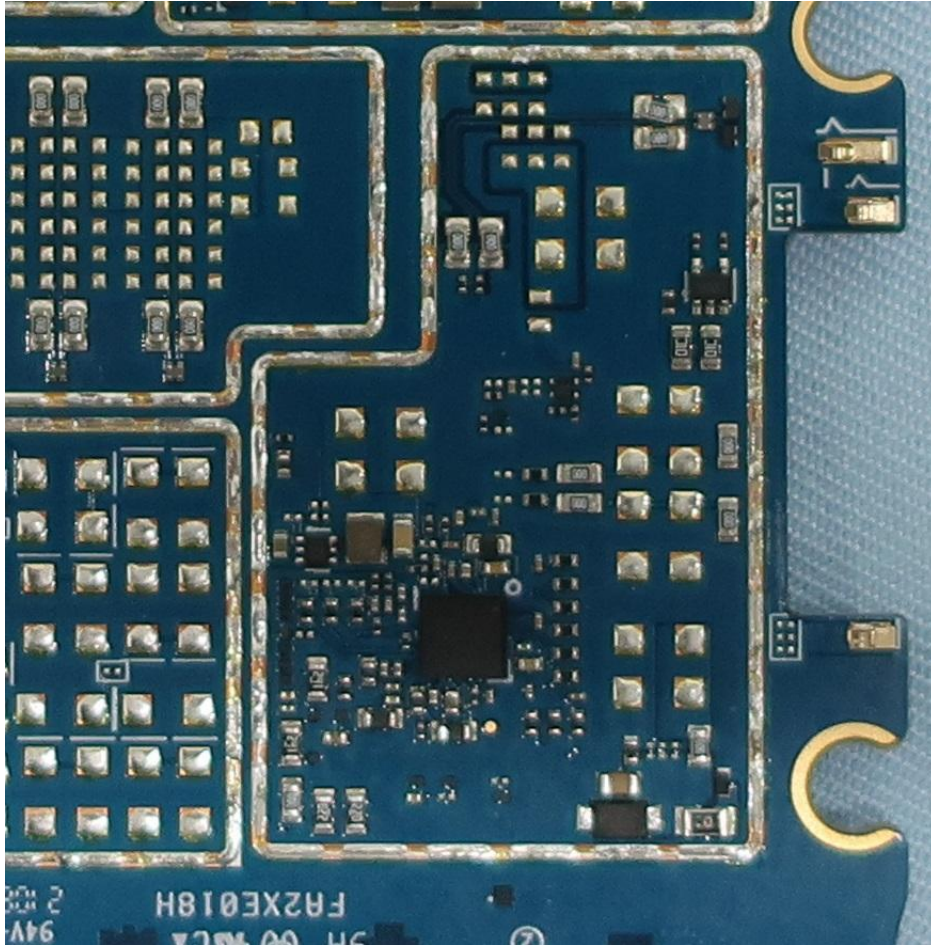
Exhibit 9G – LCD control circuit on PCBA (HK2137A)

IS version PCBA contains additional protection components which are zener diodes, transient voltage suppressor and switching diodes



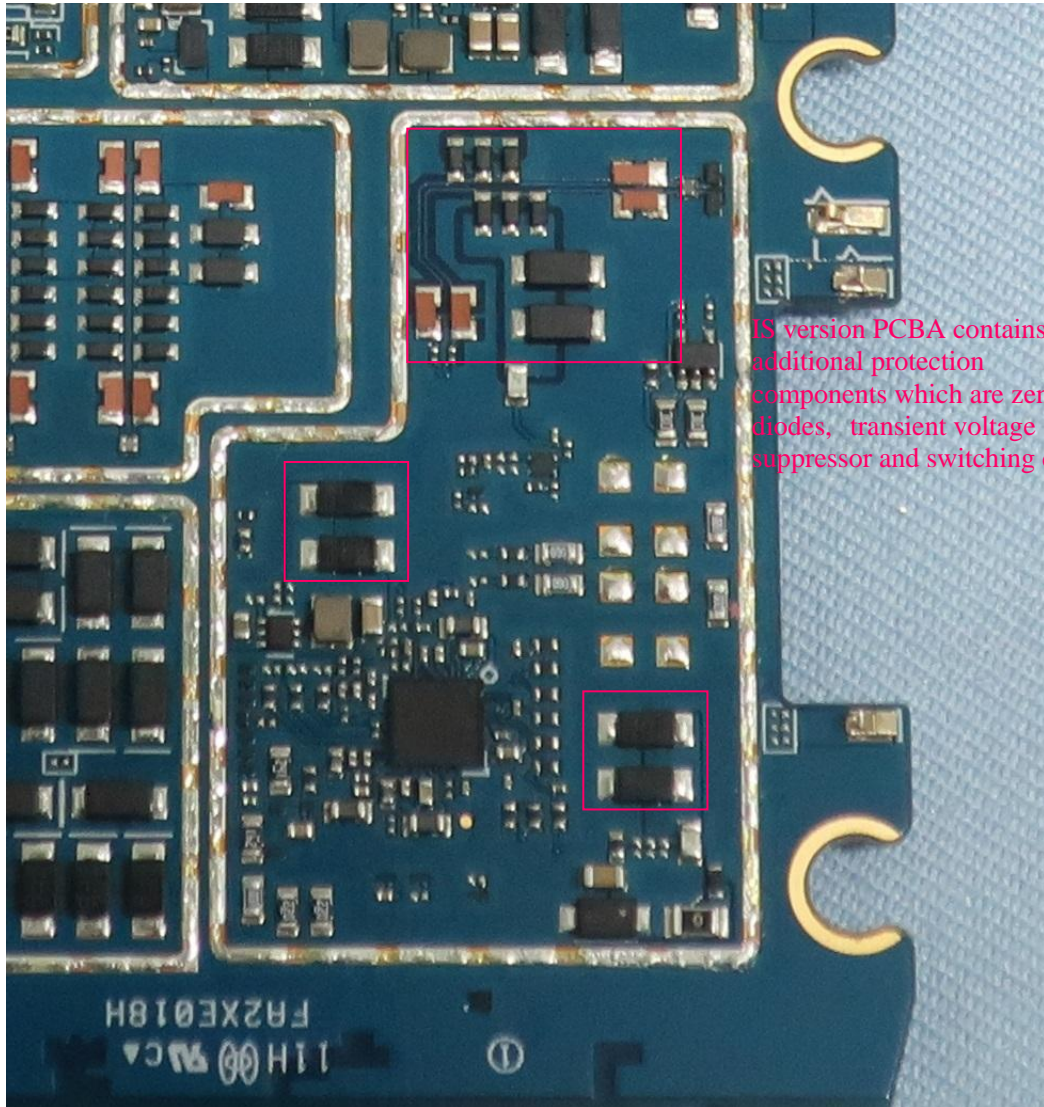
LCD control circuit on PCBA

Exhibit 9H – Audio Codec circuit on PCBA (HK2136A, HK2156A)



Audio Codec circuit on PCBA

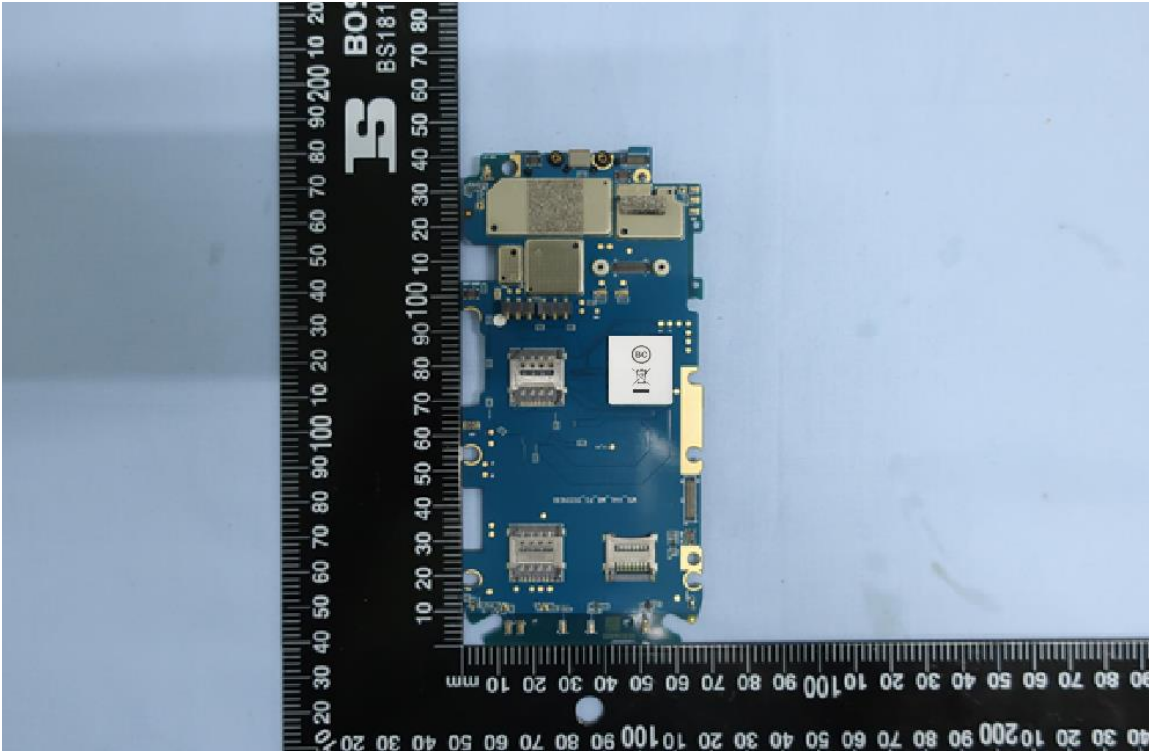
Exhibit 9H – Audio Codec circuit on PCBA (HK2137A)



IS version PCBA contains additional protection components which are zener diodes, transient voltage suppressor and switching diodes

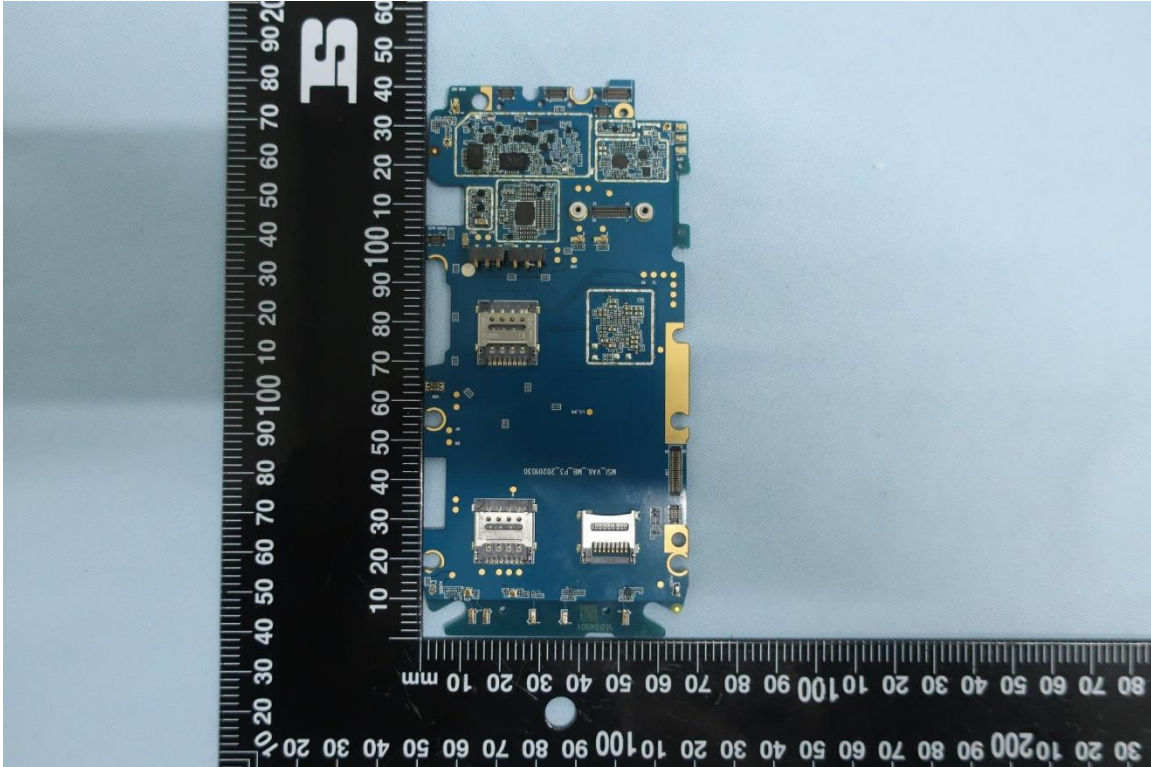
Audio Codec circuit on PCBA

Exhibit 9I – RF board with shields (Bottom) (HK2136A, HK2156A, HK2137A)



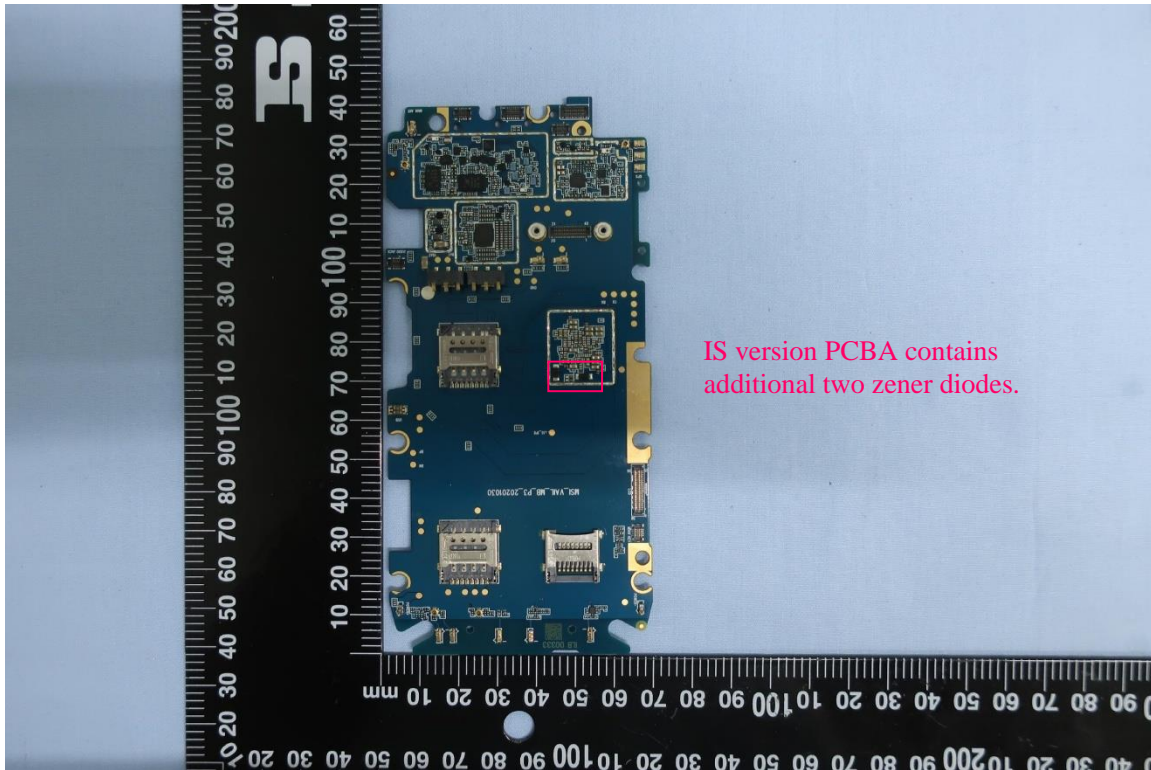
RF board with shields (Bottom)

Exhibit 9J – RF board without shields (Bottom) (HK2136A, HK2156A)



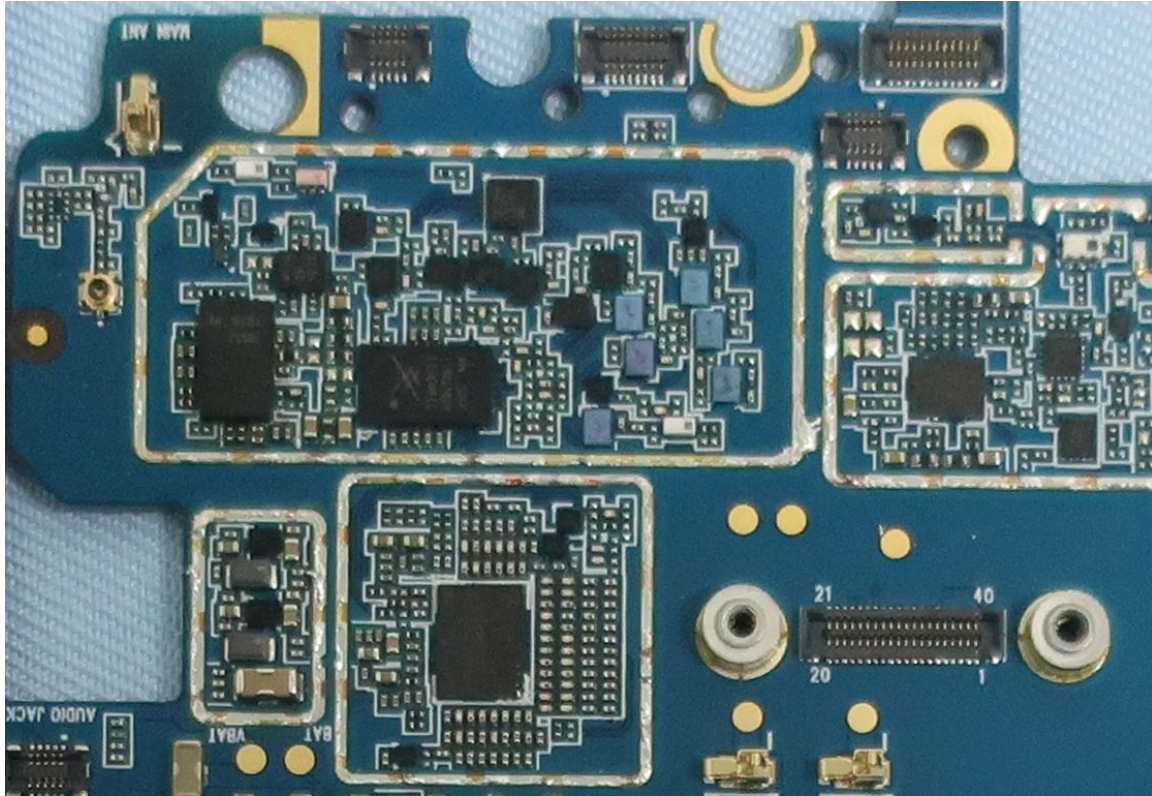
RF board without shields (Bottom)

Exhibit 9J – RF board without shields (Bottom) (HK2137A)



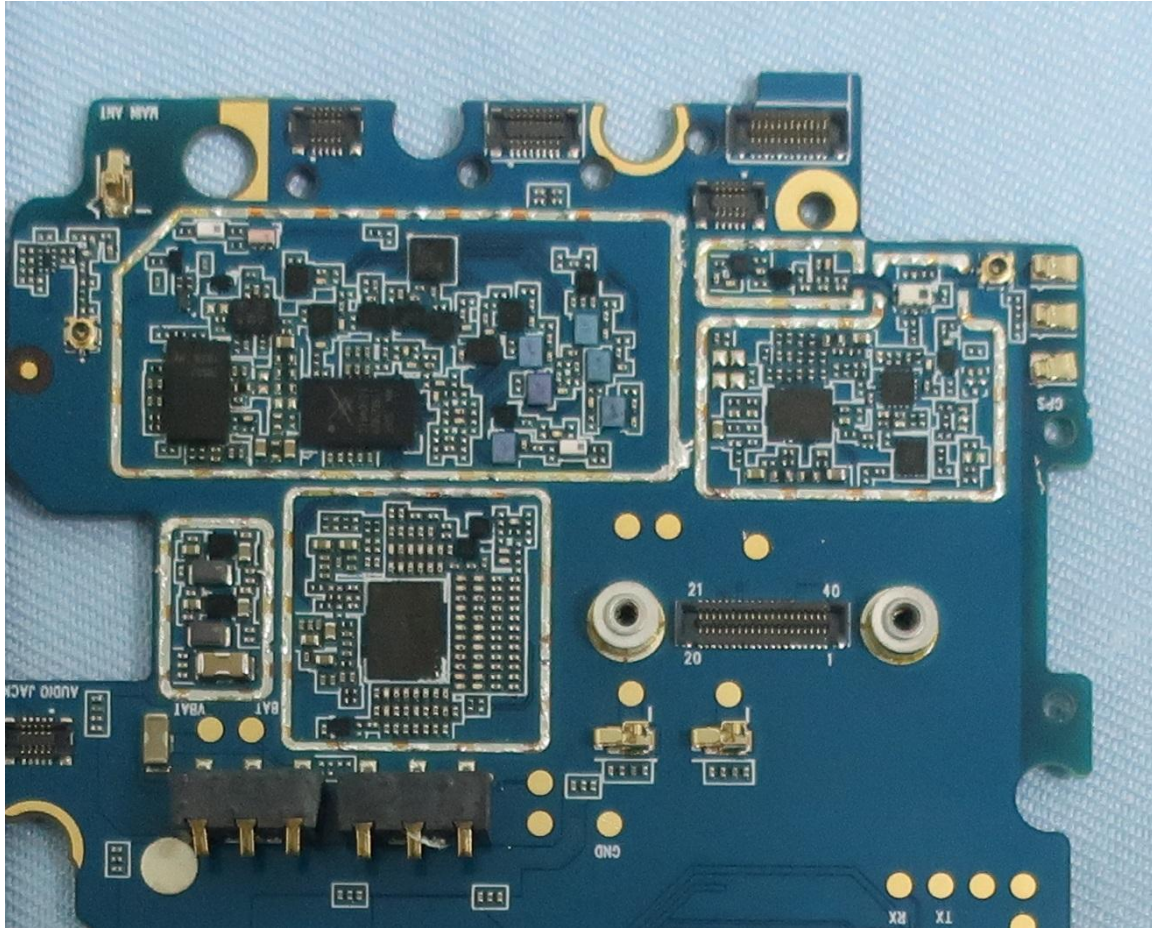
RF board without shields (Bottom)

Exhibit 9K – WWAN and WiFi/BT circuit on PCBA (HK2136A, HK2156A, HK2137A)



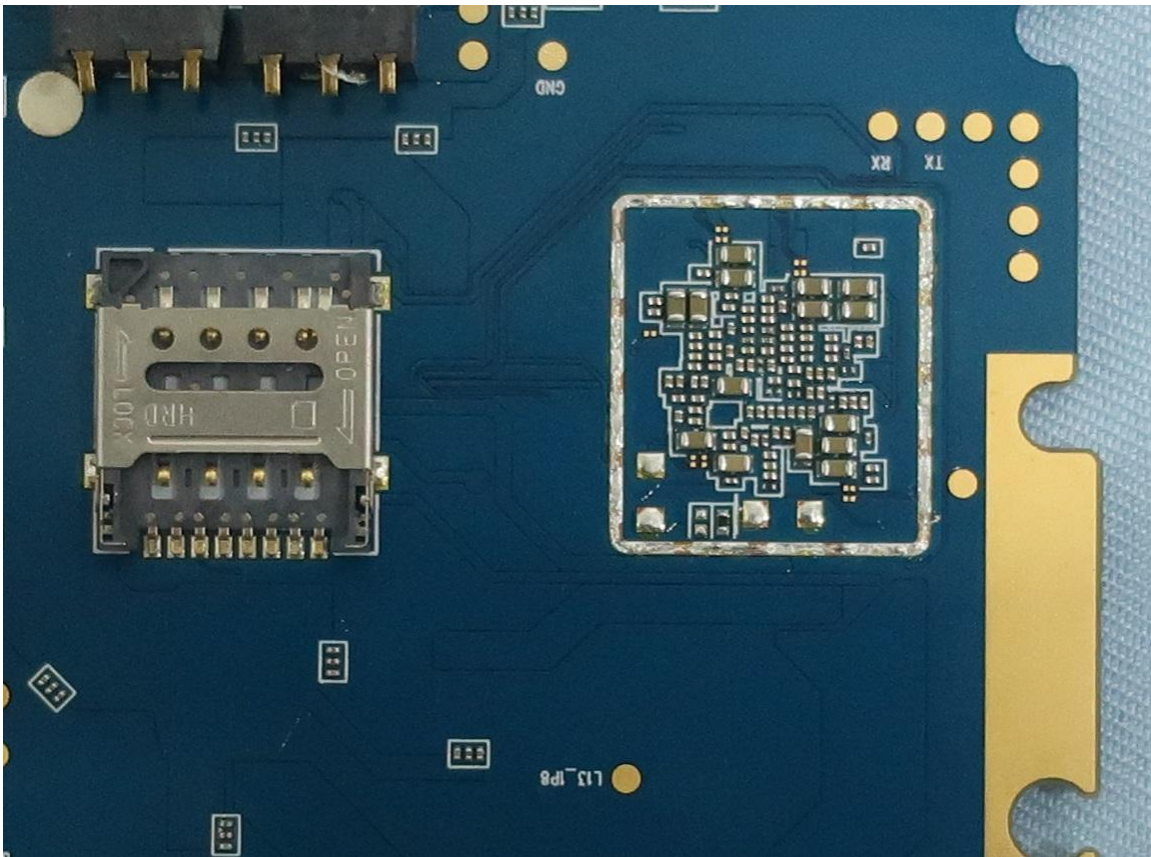
WWAN and WiFi/BT circuit on PCBA

Exhibit 9L – APT and transceiver circuit on PCBA (HK2136A, HK2156A, HK2137A)



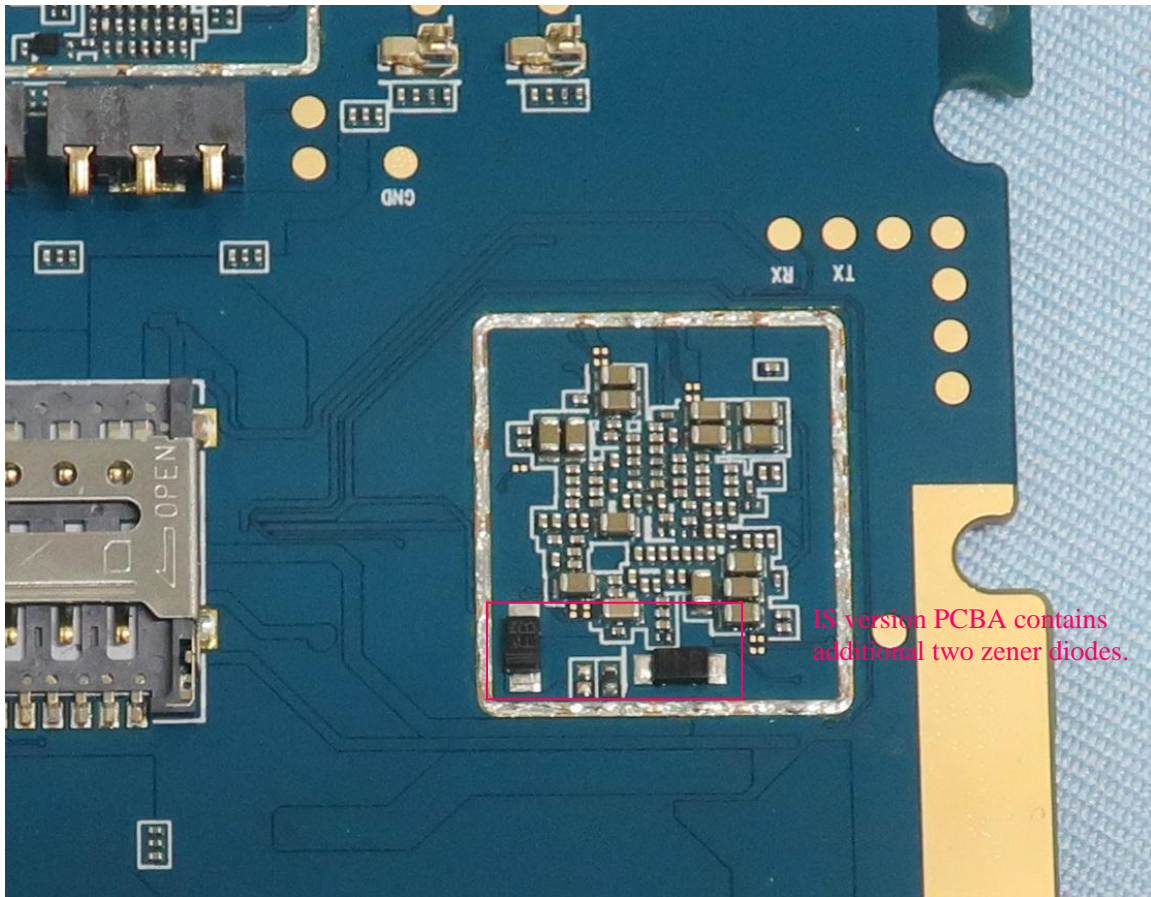
APT and transceiver circuit on PCBA

**Exhibit 9M – SIM2 card connector CPU power decoupling capacitor circuit on PCBA
(HK2136A, HK2156A)**



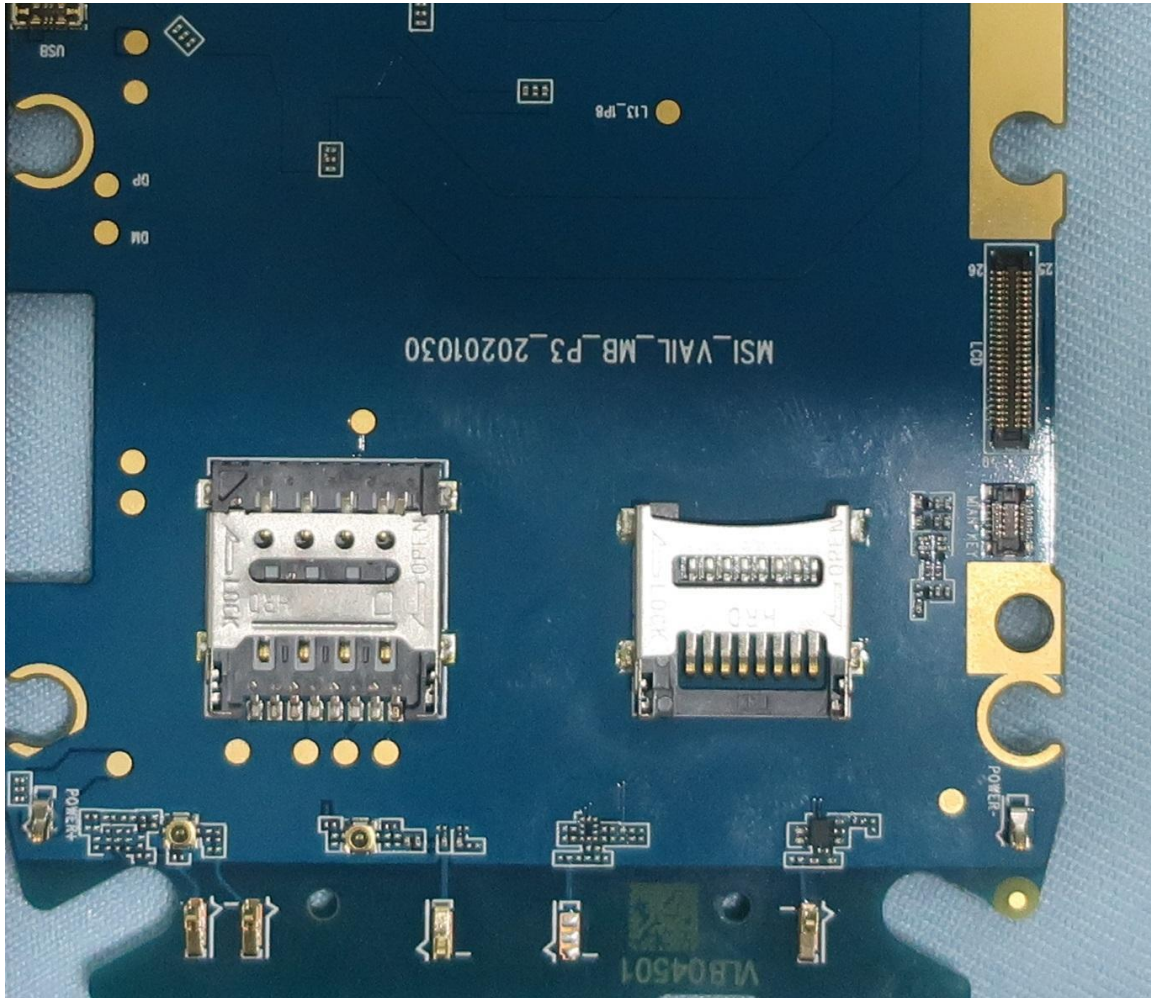
**SIM2 card connector
CPU power decoupling capacitor circuit on PCBA**

Exhibit 9M – SIM2 card connector CPU power decoupling capacitor circuit on PCBA (HK2137A)



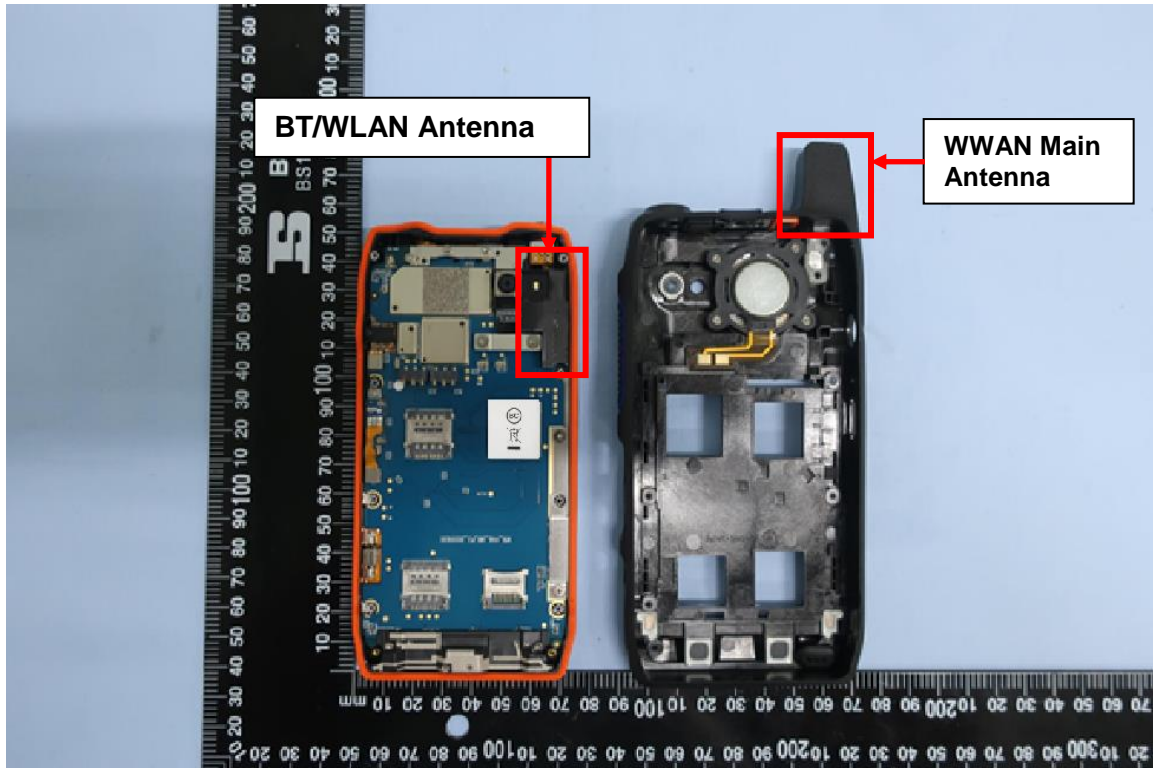
**SIM2 card connector
CPU power decoupling capacitor circuit on PCBA**

Exhibit 9N – SIM1 card connector T-Flash connector (HK2136A, HK2156A, HK2137A)



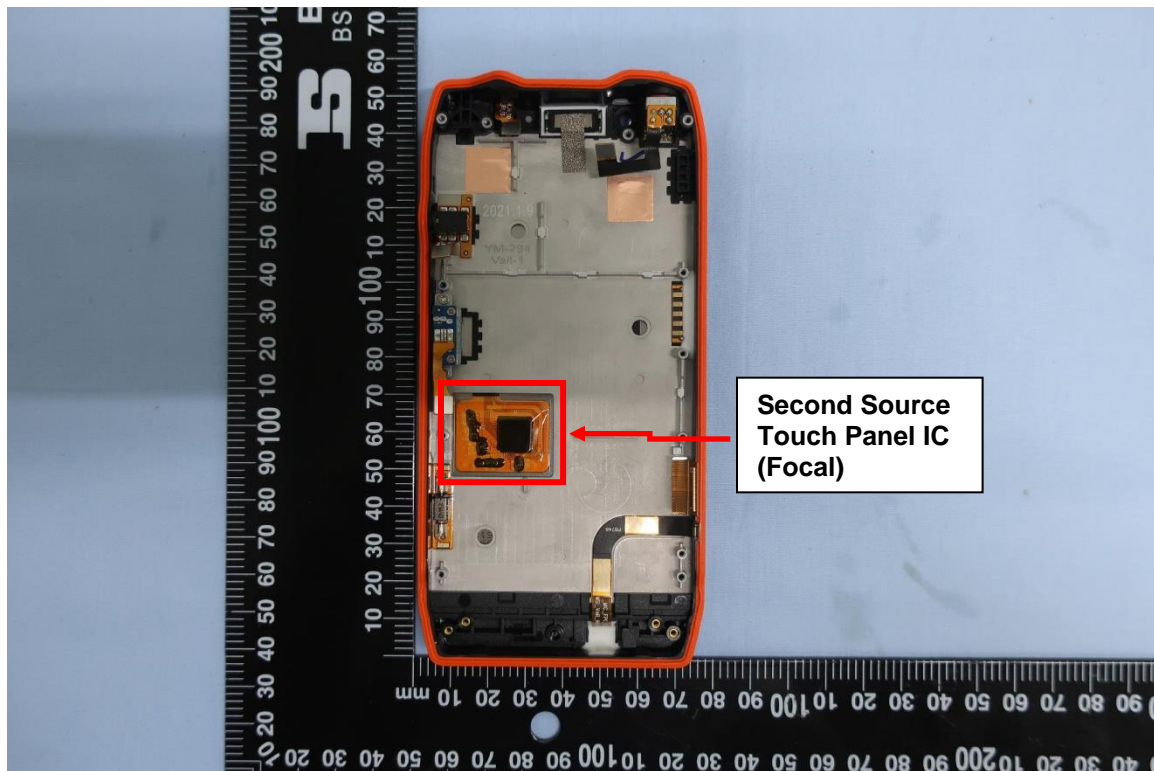
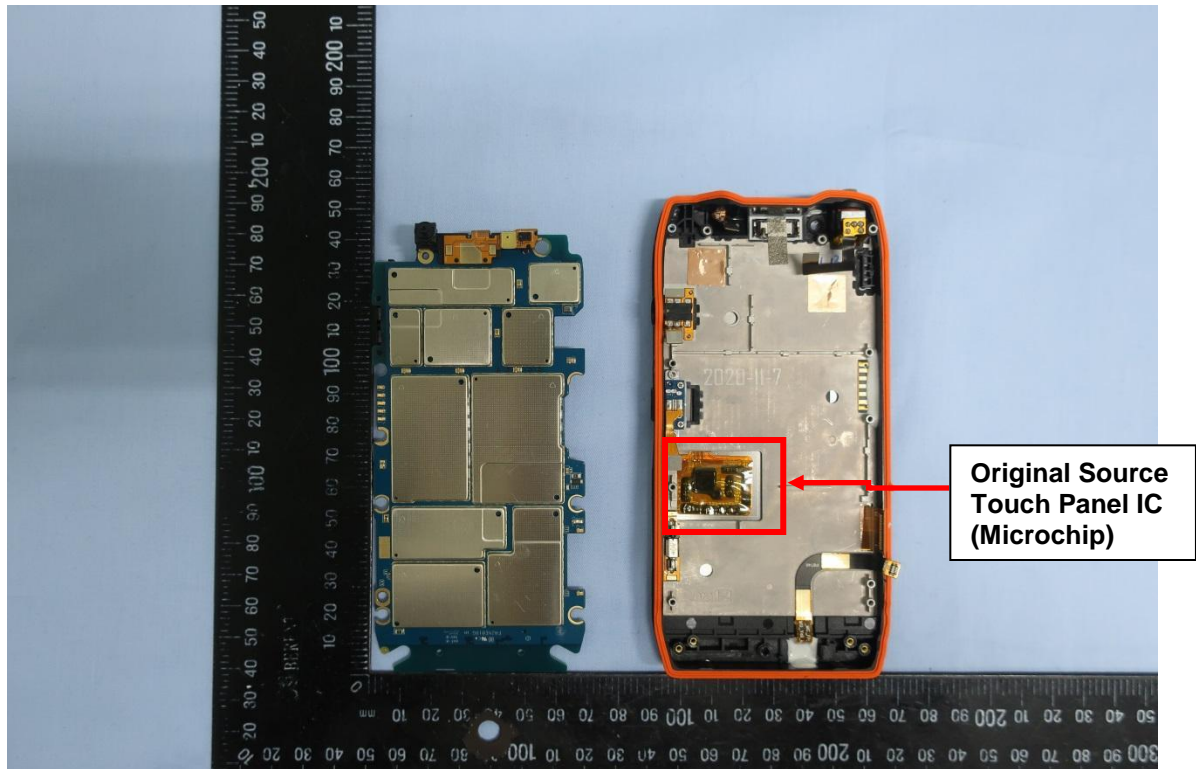
**SIM1 card connector
T-Flash connector**

Exhibit 90 – PCB board with chassis (Top) and rear housing (HK2136A, HK2156A, HK2137A)



PCB board with chassis (Top) and rear housing

Exhibit 9P – PCB board (Bottom) and front housing (HK2136A, HK2156A, HK2137A)



PCB board (Bottom) and front housing