

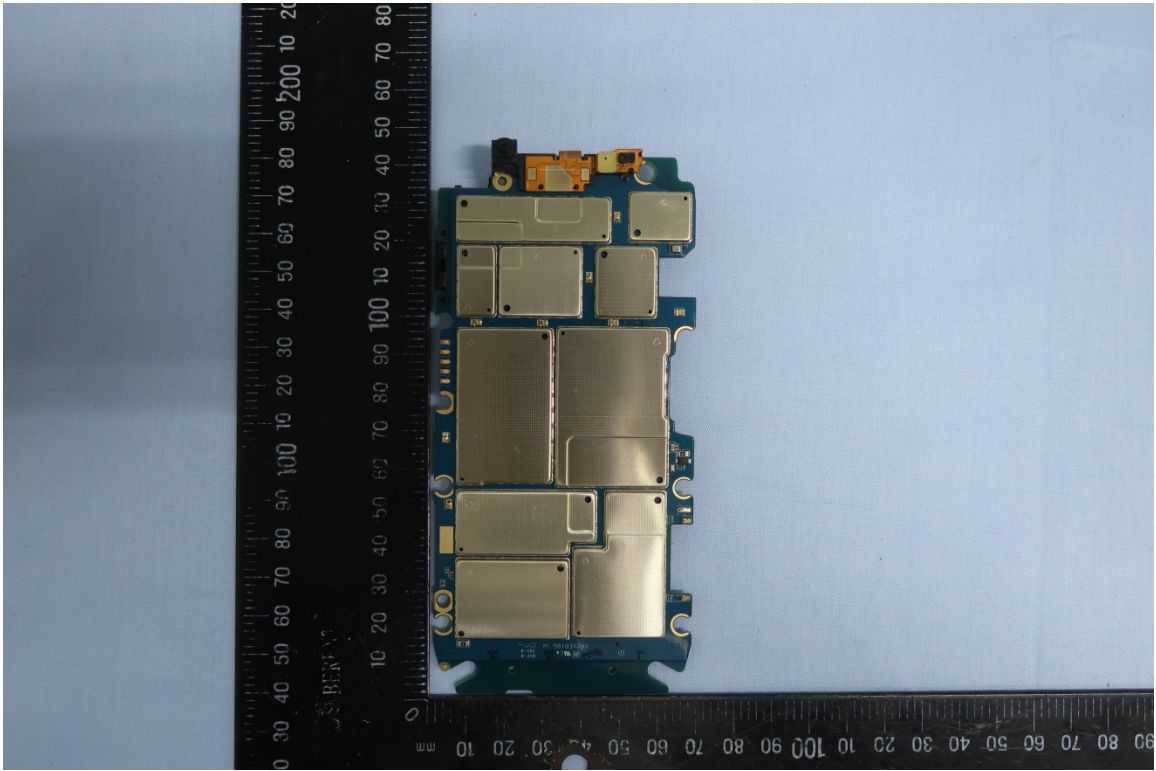
**EXHIBIT 9****Internal Photographs**

(Pursuant to FCC Part 2.1033(b)(7) and 2.1033(c)(12))

The following photographs are attached.

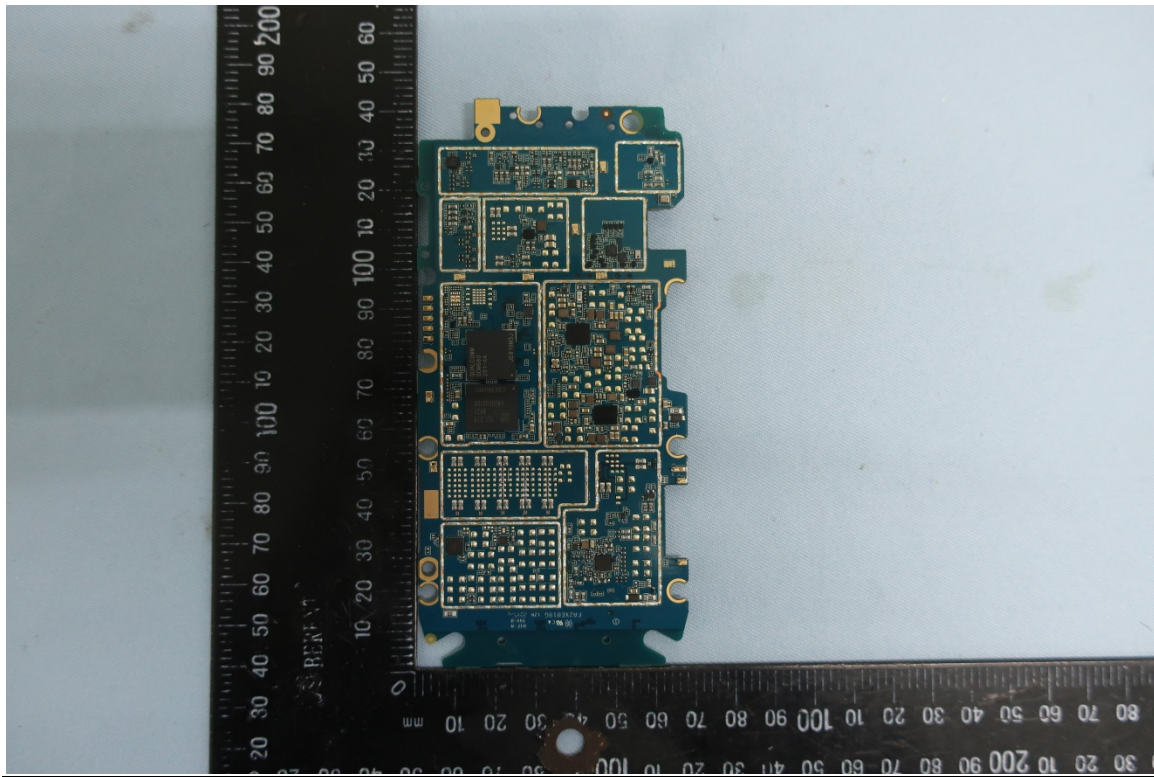
	<u>Exhibit</u>
1. RF board <u>with</u> shields (Top)	9A
2. RF board <u>without</u> shields (Top)	9B
3. Receive/Mic/Speaker PA/Camera/G-sensor /top key circuits on PCBA	9C
4. SAR sensor/DRX circuits on PCBA	9D
5. CPU/Memory and PMU circuit on PCBA	9E
6. PMU circuit on PCBA	9F
7. LCD control circuit on PCBA	9G
8. Audio Codec circuit on PCBA	9H
9. RF board <u>with</u> shields (Bottom)	9I
10. RF board <u>without</u> shields (Bottom)	9J
11. WWAN and WiFi/BT circuit on PCBA	9K
12. APT and transceiver circuit on PCBA	9L
13. SIM2 card connector CPU power decoupling capacitor circuit on PCBA	9M
14. SIM1 card connector T-Flash connector	9N
15. PCB board with chassis (Top) and rear housing	9O
16. PCB board (Bottom) and front housing	9P

**Exhibit 9A – RF board with shields (Top) (HK2136A, HK2156A, HK2137A)**



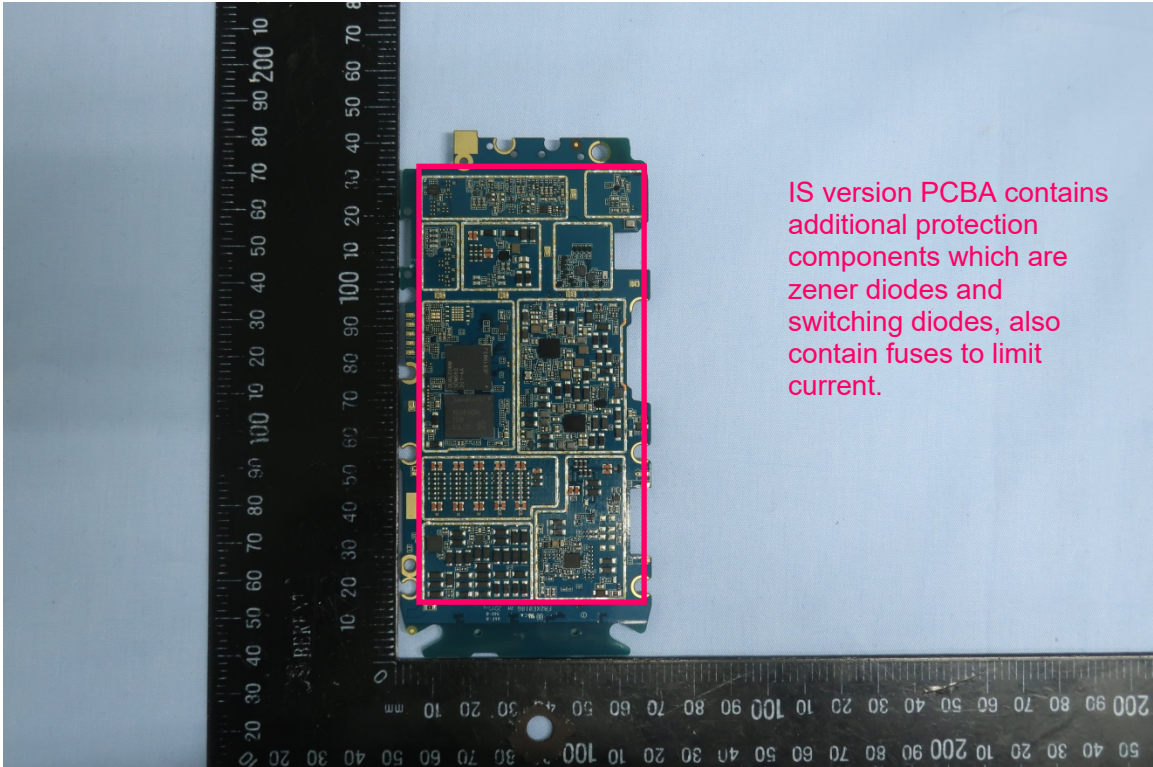
**RF board with shields (Top)**

**Exhibit 9B – RF board without shields (Top) (HK2136A, HK2156A)**



**RF board without shields (Top)**

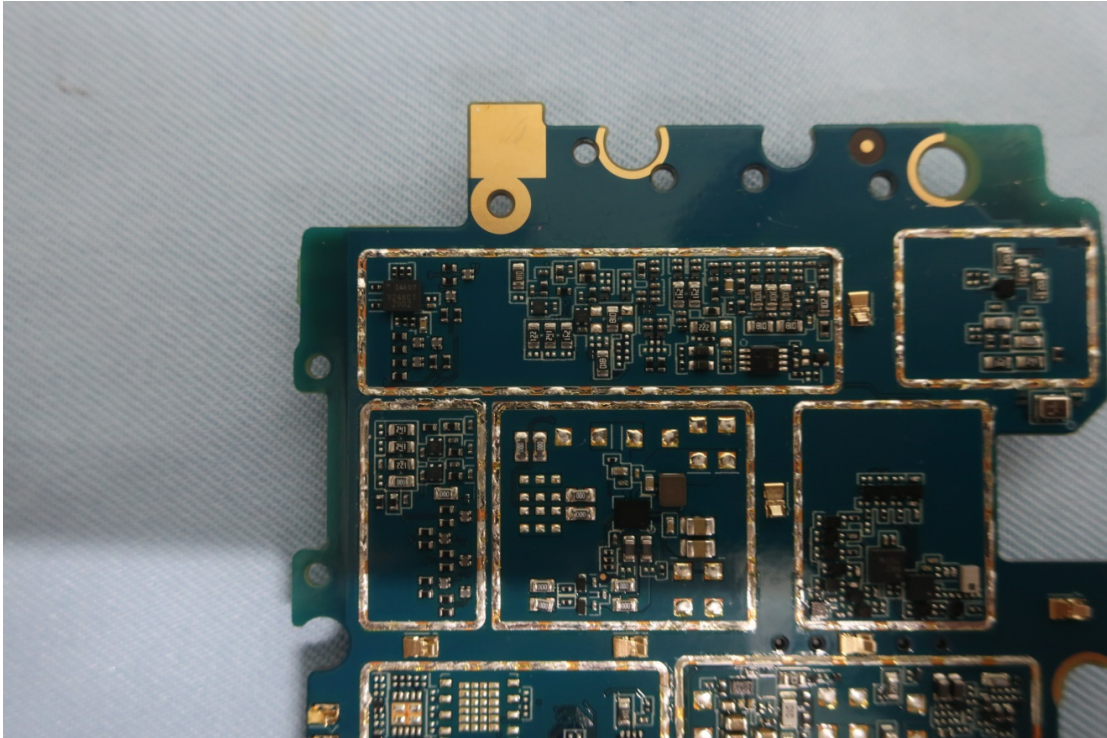
**Exhibit 9B – RF board without shields (Top) (HK2137A)**



**RF board without shields (Top)**

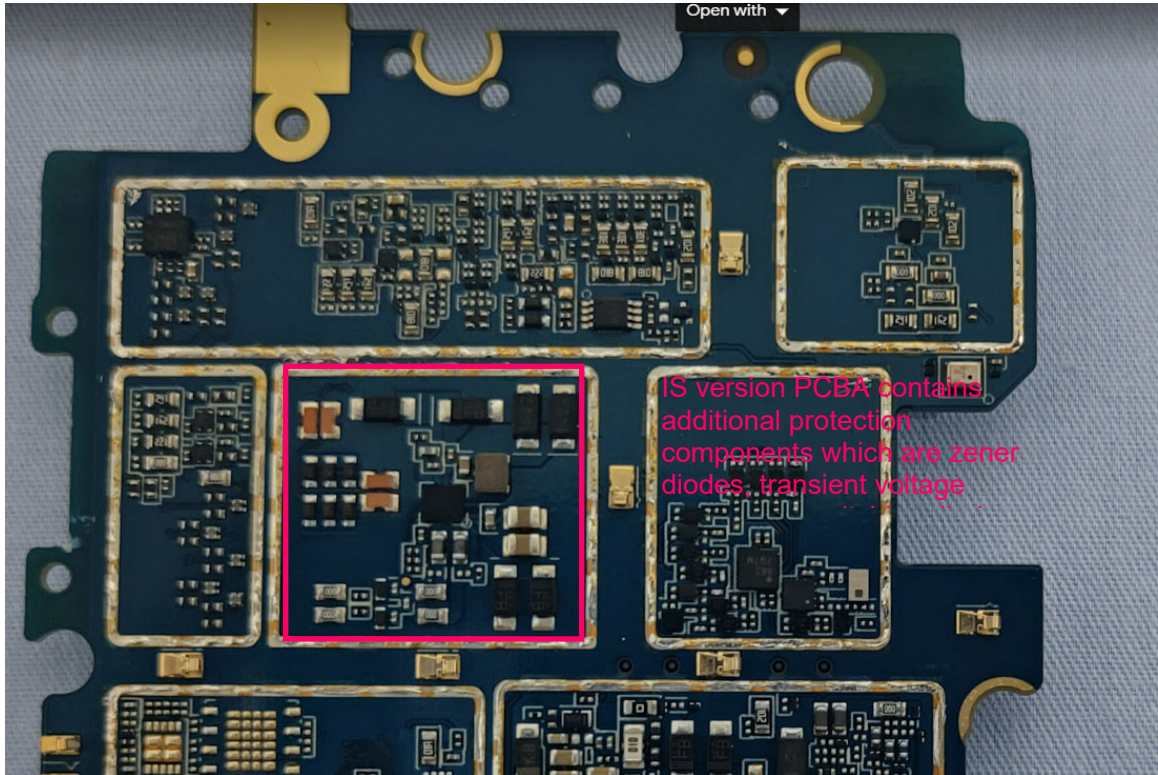


**Exhibit 9C – Receive/Mic/Speaker PA/Camera/G-sensor/top key circuits on PCBA (HK2136A, HK2156A)**



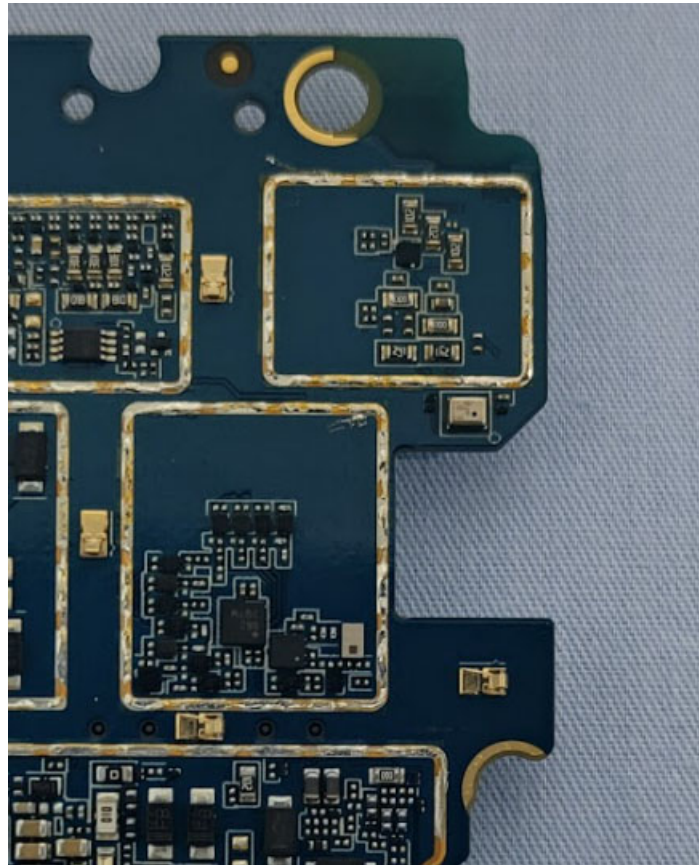
**Receive/Mic/Speaker PA/Camera/G-sensor/top  
key circuits on PCBA**

Exhibit 9C – Receive/Mic/Speaker PA/Camera/G-sensor/top key circuits on PCBA (HK2137A)



Receive/Mic/Speaker PA/Camera/G-sensor/top key circuits on PCBA

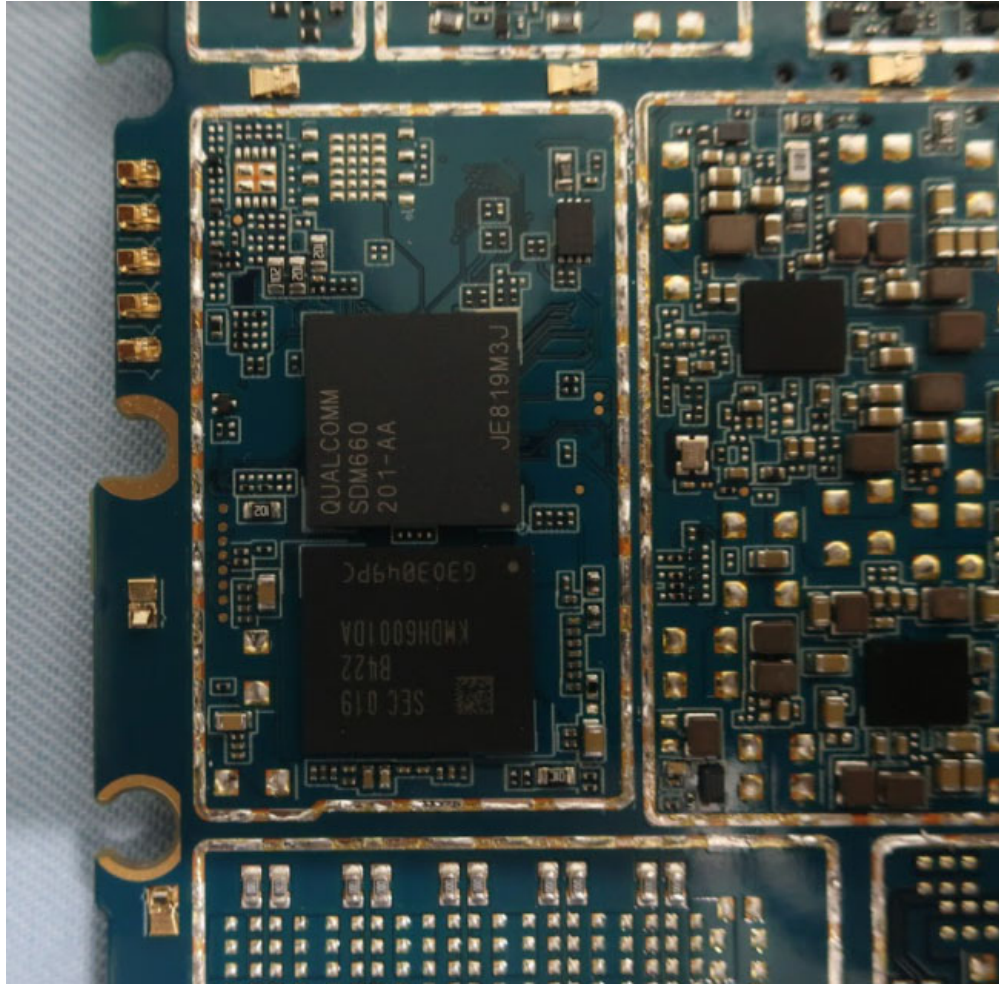
Exhibit 9D – SAR sensor/DRX circuits on PCBA (HK2136A, HK2156A, HK2137A)



SAR sensor/DRX circuits on PCBA



Exhibit 9E – CPU/Memory and PMU circuit on PCBA (HK2136A, HK2156A)

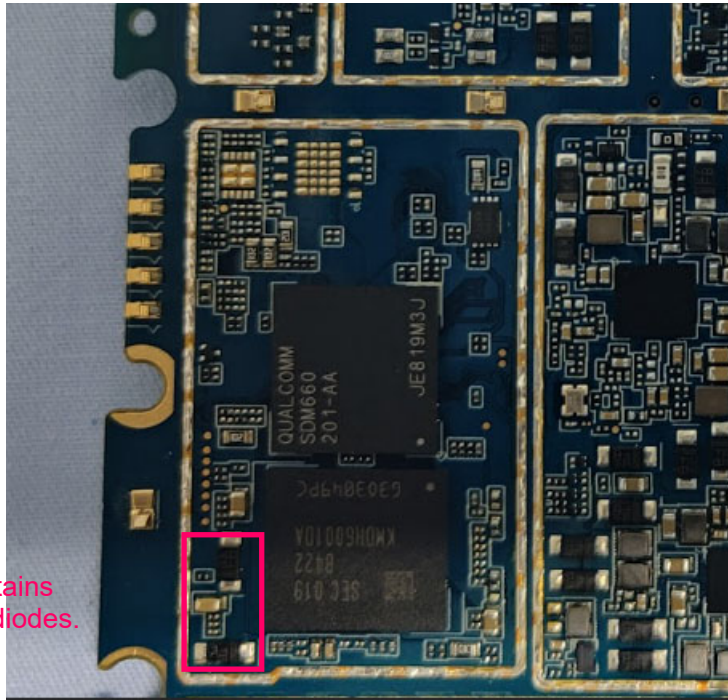


CPU/Memory and PMU circuit on PCBA



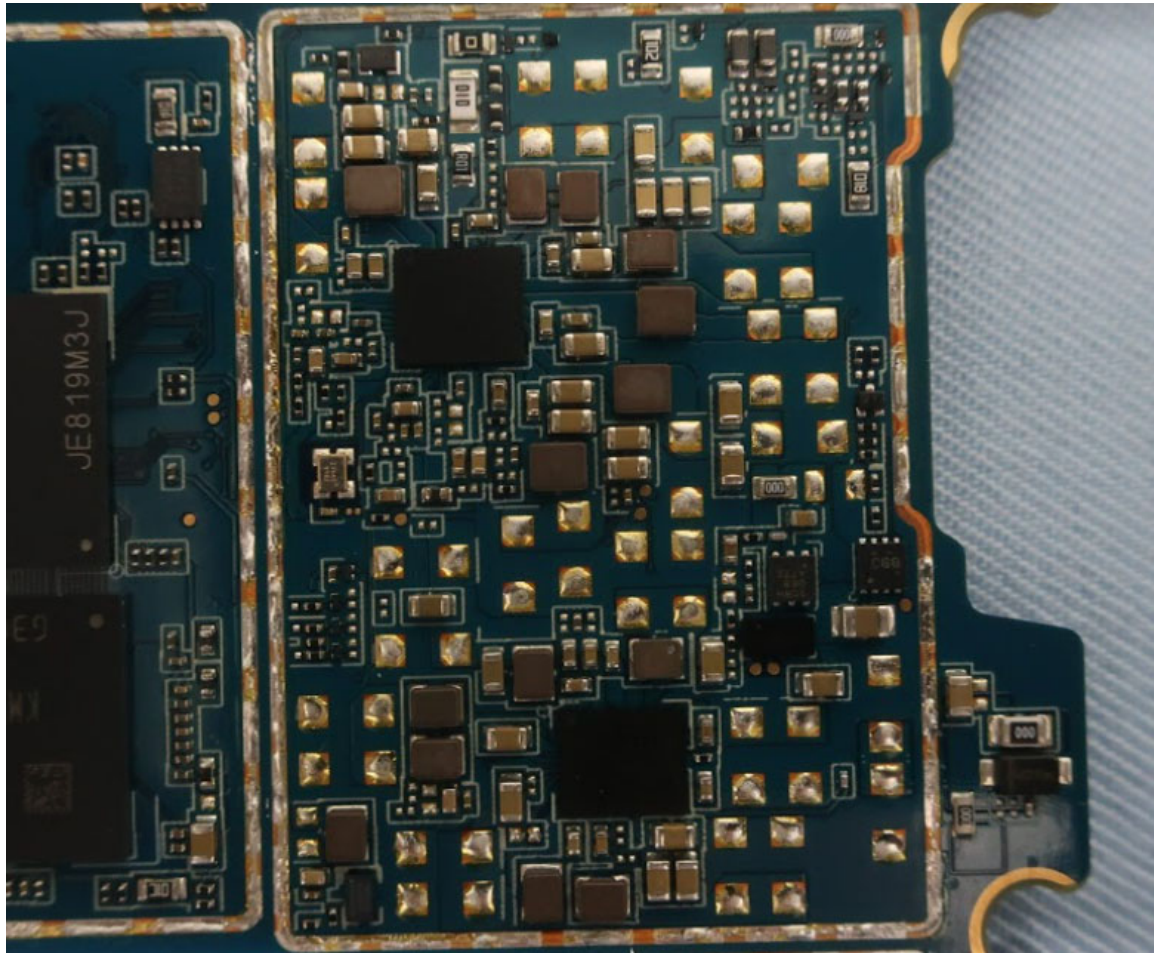
**Exhibit 9E – CPU/Memory and PMU circuit on PCBA (HK2137A)**

IS version PCBA contains additional two zener diodes.



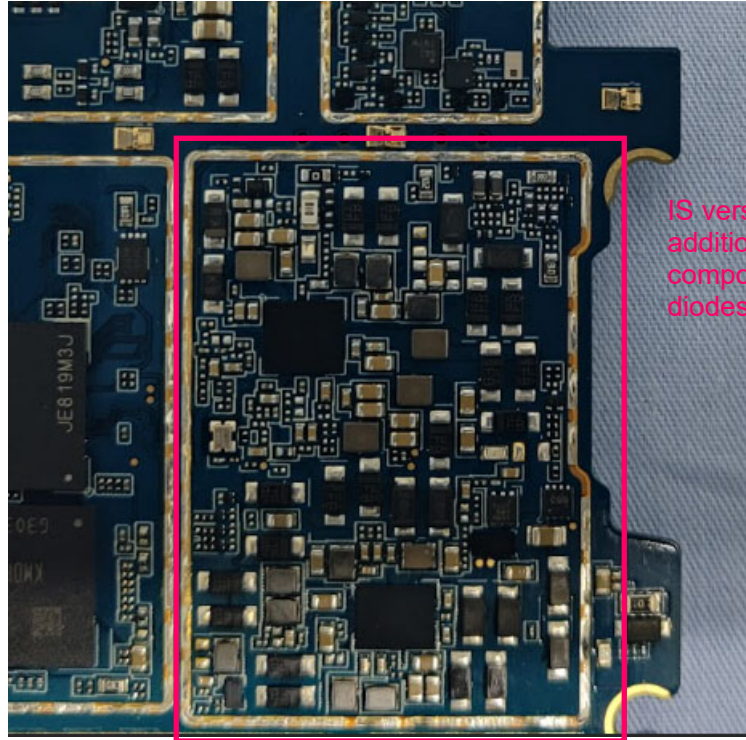
**CPU/Memory and PMU circuit on PCBA**

Exhibit 9F – PMU circuit on PCBA (HK2136A, HK2156A)



PMU circuit on PCBA

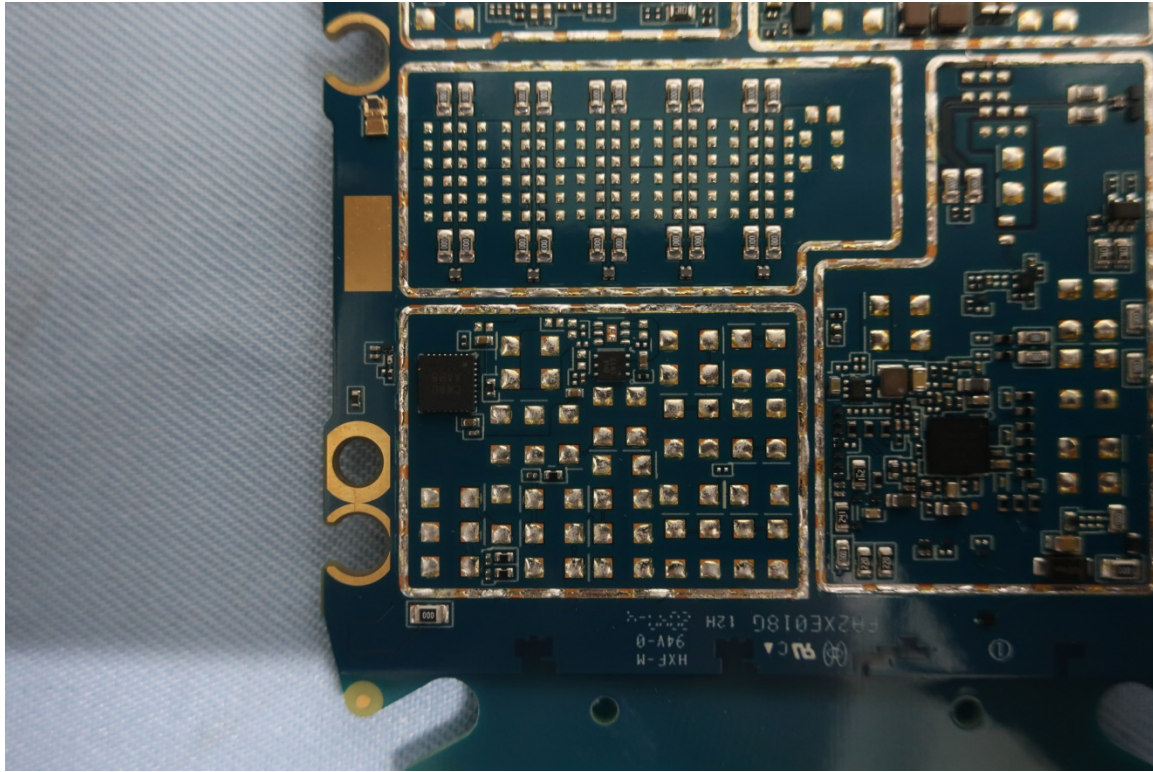
**Exhibit 9F – PMU circuit on PCBA (HK2137A)**



IS version PCBA contains additional protection components which are zener diodes, transient voltage

**PMU circuit on PCBA**

**Exhibit 9G – LCD control circuit on PCBA (HK2136A, HK2156A)**

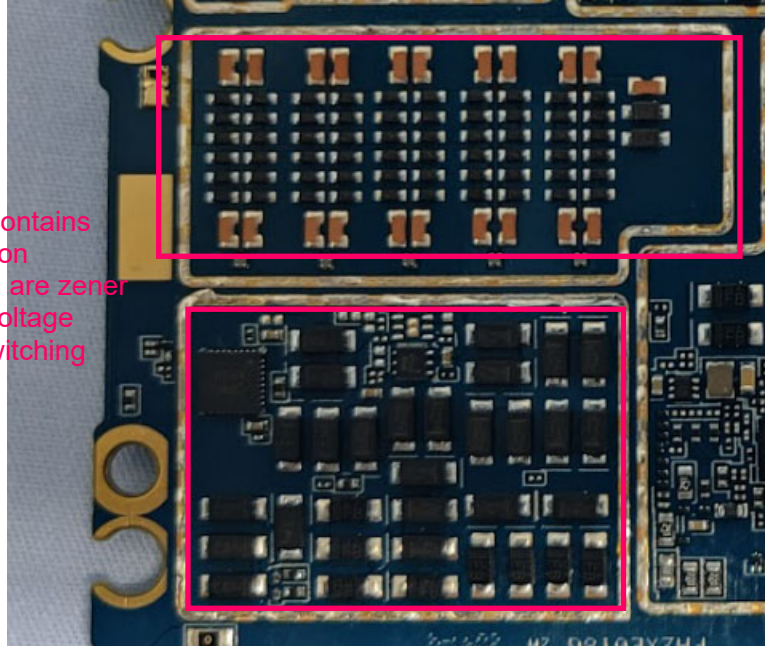


**LCD control circuit on PCBA**



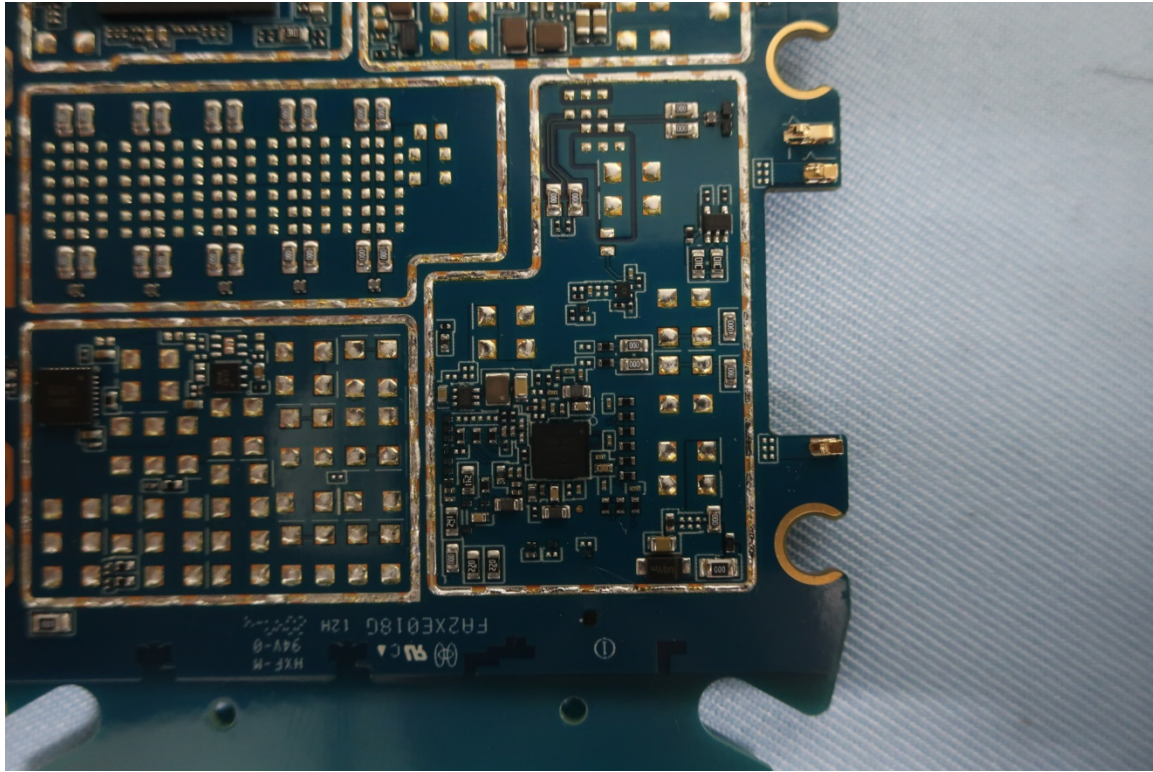
**Exhibit 9G – LCD control circuit on PCBA (HK2137A)**

IS version PCBA contains additional protection components which are zener diodes, transient voltage suppressor and switching



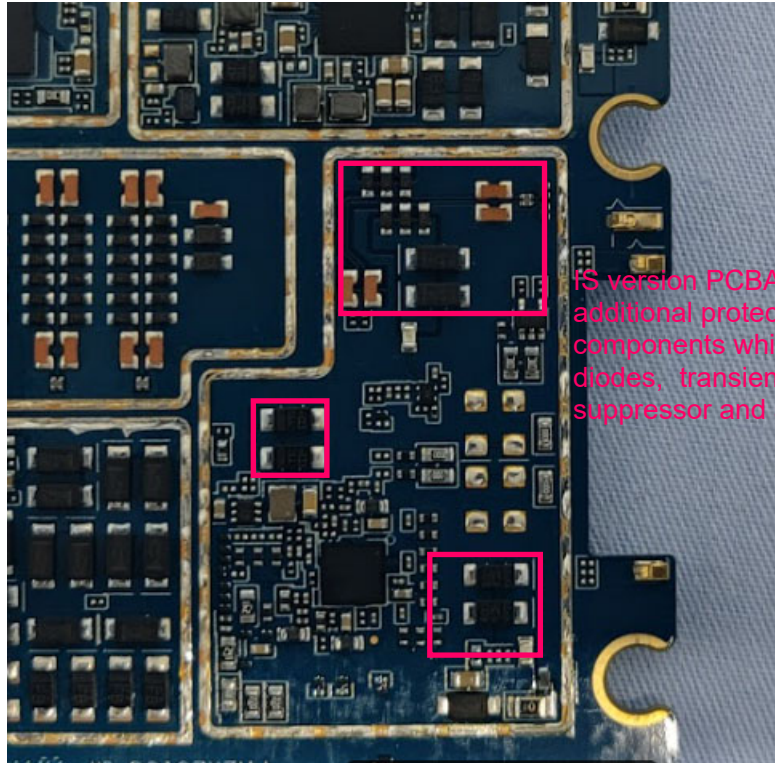
**LCD control circuit on PCBA**

Exhibit 9H – Audio Codec circuit on PCBA (HK2136A, HK2156A)



Audio Codec circuit on PCBA

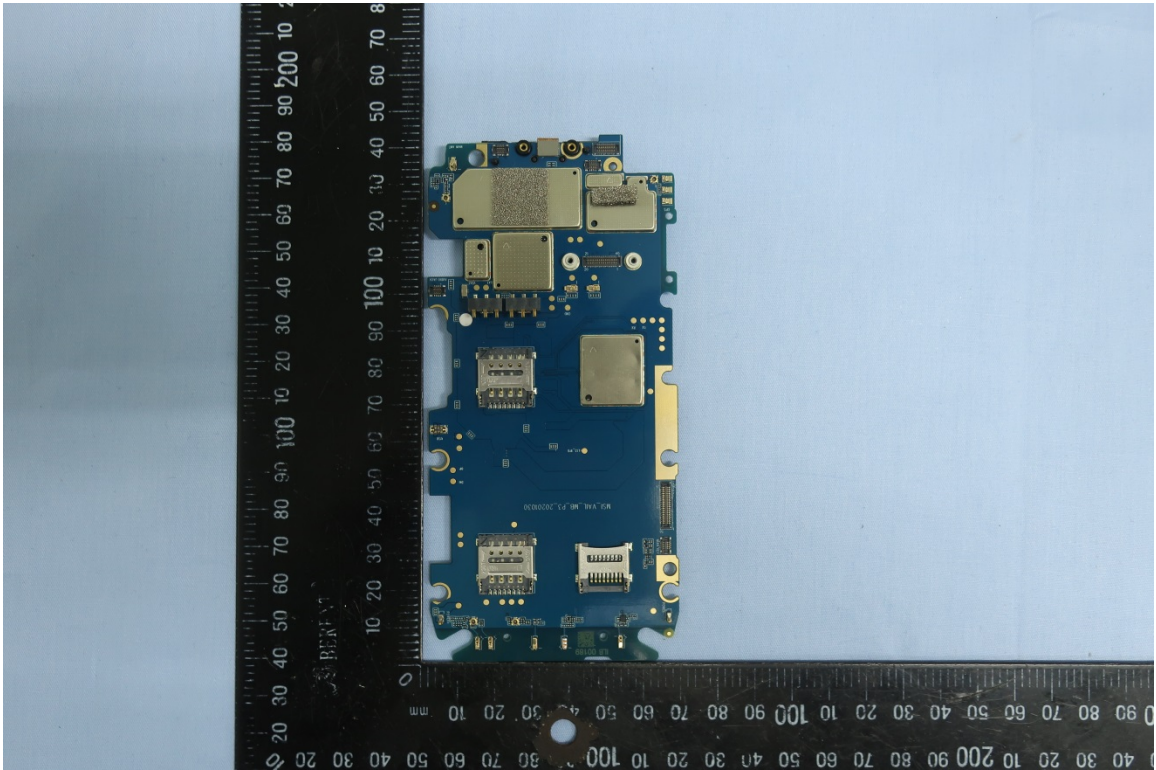
Exhibit 9H – Audio Codec circuit on PCBA (HK2137A)



FS version PCBA contains additional protection components which are zener diodes, transient voltage suppressor and switching

Audio Codec circuit on PCBA

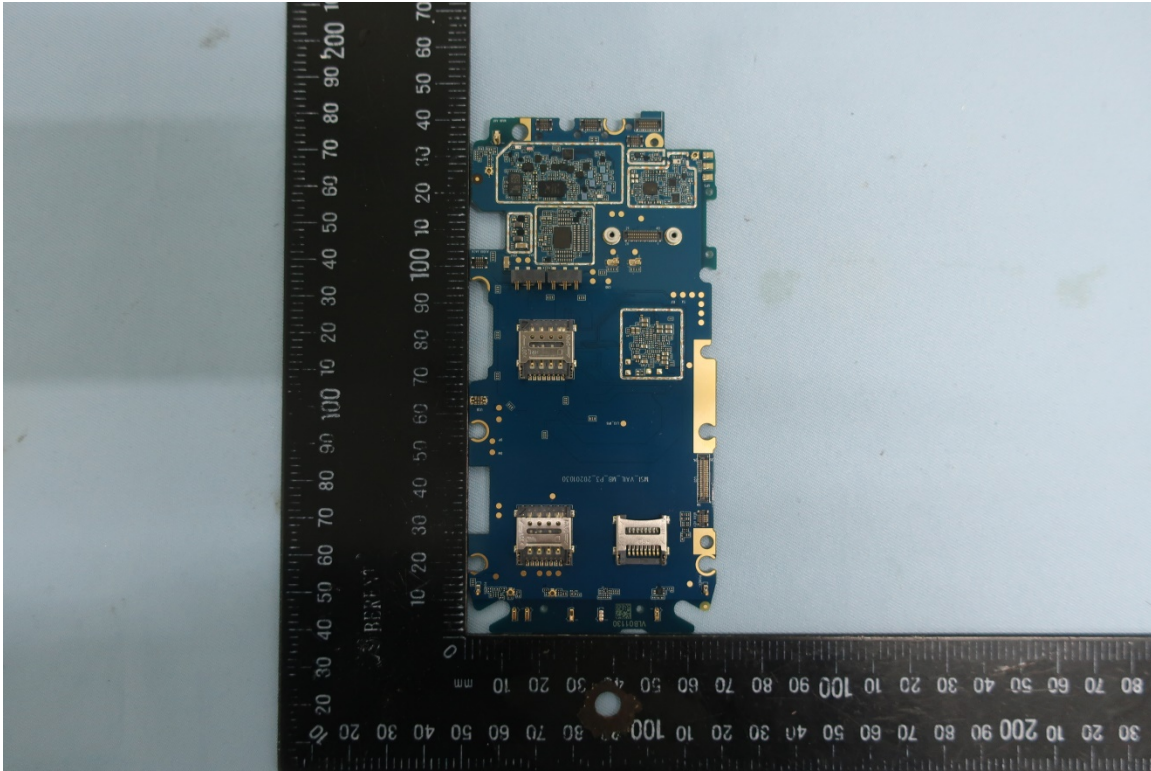
**Exhibit 9I – RF board with shields (Bottom) (HK2136A, HK2156A, HK2137A)**



**RF board with shields (Bottom)**

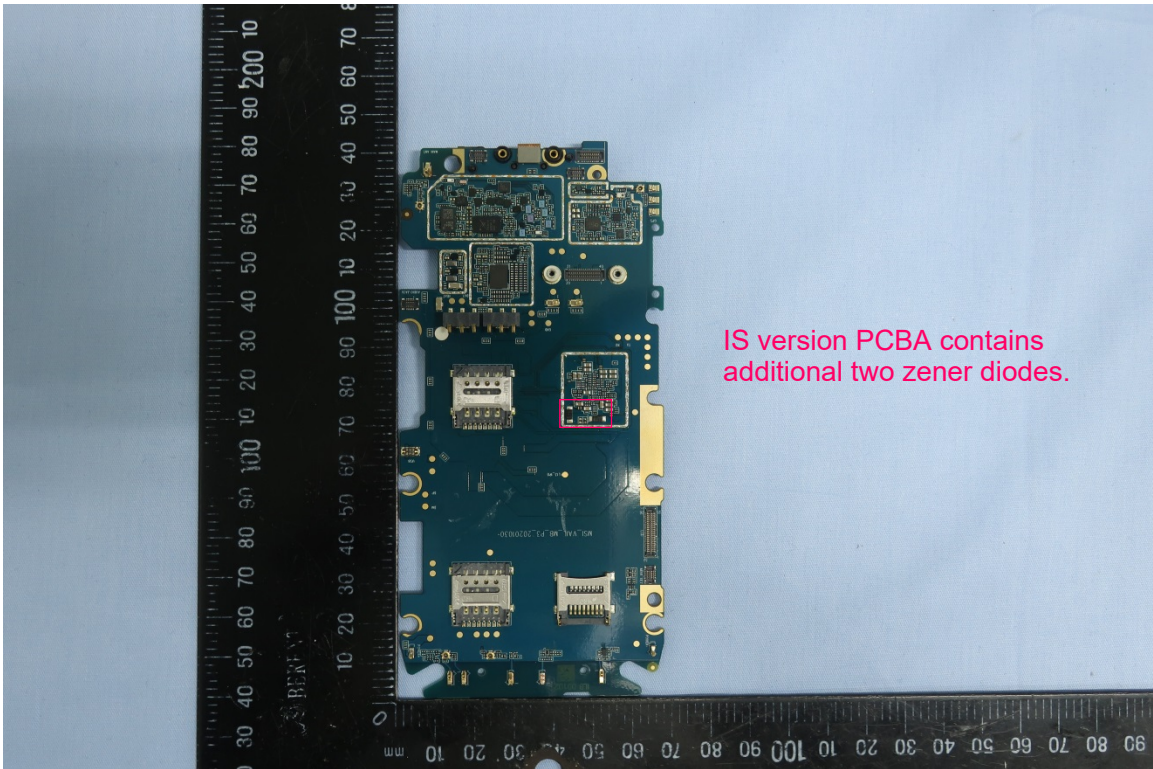


**Exhibit 9J – RF board without shields (Bottom) (HK2136A, HK2156A)**



**RF board without shields (Bottom)**

**Exhibit 9J – RF board without shields (Bottom)(HK2137A)**



**RF board without shields (Bottom)**