

EXHIBIT 9**Internal Photographs**

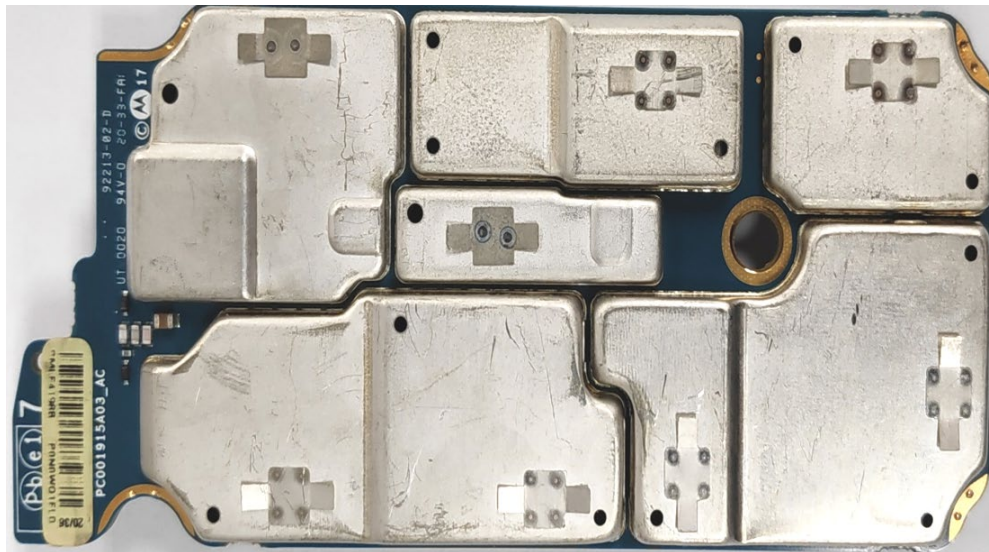
(Pursuant to FCC Part 2.1033(b)(7), 2.1033(c)(12) and RSP 100 Annex C)

The following photographs are attached.

Exhibit

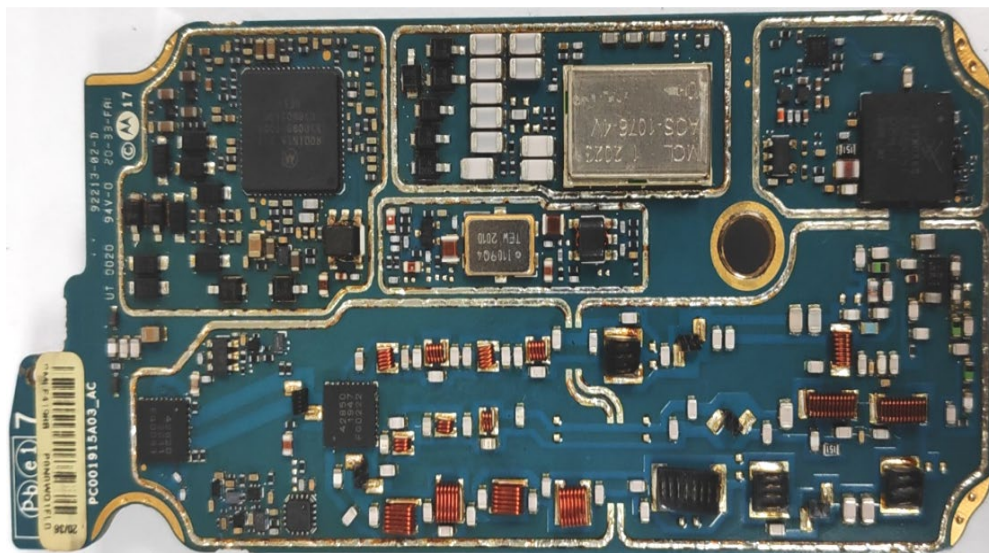
1. RF board <u>with</u> Shields (Top) (APX8000H/ APX8000HXE)	9A
2. RF board <u>without</u> Shields (Top) (APX8000H/ APX8000HXE)	9B
3. RF board <u>with</u> Shields (Bottom) (APX8000H/ APX8000HXE)	9C
4. RF board <u>without</u> Shields (Bottom) (APX8000H/ APX8000HXE)	9D
5. Expansion board <u>with</u> shields (Top) (APX8000H/ APX8000HXE)	9E
6. Expansion board <u>without</u> shields (Top) (APX8000H/ APX8000HXE)	9F
7. Expansion board <u>with</u> shields (Bottom) (APX8000H/ APX8000HXE)	9G
8. Expansion board <u>without</u> shields (Bottom) (APX8000H/ APX8000HXE)	9H
9. Vocon board <u>with</u> shields (Top) (APX8000H/ APX8000HXE)	9I
10. Vocon board <u>without</u> shields (Top) (APX8000H/ APX8000HXE)	9J
11. Vocon board <u>with</u> shields (Bottom) (APX8000H/ APX8000HXE)	9K
12. Vocon board <u>without</u> shields (Bottom) (APX8000H/ APX8000HXE)	9L
13. RF and Vocon boards <u>with</u> chassis and housing (APX8000H Model 2.5 BLK/BRN) (Front side)	9M
14. Expansion board <u>with</u> chassis and housing (APX8000H Model 2.5 BLK/BRN) (Back side)	9N
15. RF and Vocon boards <u>with</u> chassis and housing (APX8000H Model 3.5 BLK/BRN) (Front side)	9O
16. Expansion board <u>with</u> chassis and housing (APX8000H Model 3.5 BLK/BRN) (Back side)	9P
17. RF and Vocon boards <u>with</u> chassis and housing (APX8000HXE Model 1.5) (Front side)	9Q
18. Expansion board <u>with</u> chassis and housing (APX8000HXE Model 1.5) (Back side)	9R
19. RF and Vocon boards <u>with</u> chassis and housing (APX8000HXE Model 2.5) (Front side)	9S
20. Expansion board <u>with</u> chassis and housing (APX8000HXE Model 2.5) (Back side)	9T
21. RF and Vocon boards <u>with</u> chassis and housing (APX8000HXE Model 3.5) (Front side)	9U
22. Expansion board <u>with</u> chassis and housing (APX8000HXE Model 3.5) (Back side)	9V
23. Exploded view of APX8000H Model 2.5 BLK/BRN	9W
24. Exploded view of APX8000H Model 3.5 BLK/BRN	9X
25. Exploded view of APX8000HXE Model 1.5	9Y
26. Exploded view of APX8000HXE Model 2.5	9Z
27. Exploded view of APX8000HXE Model 3.5	9AA

Exhibits 9A



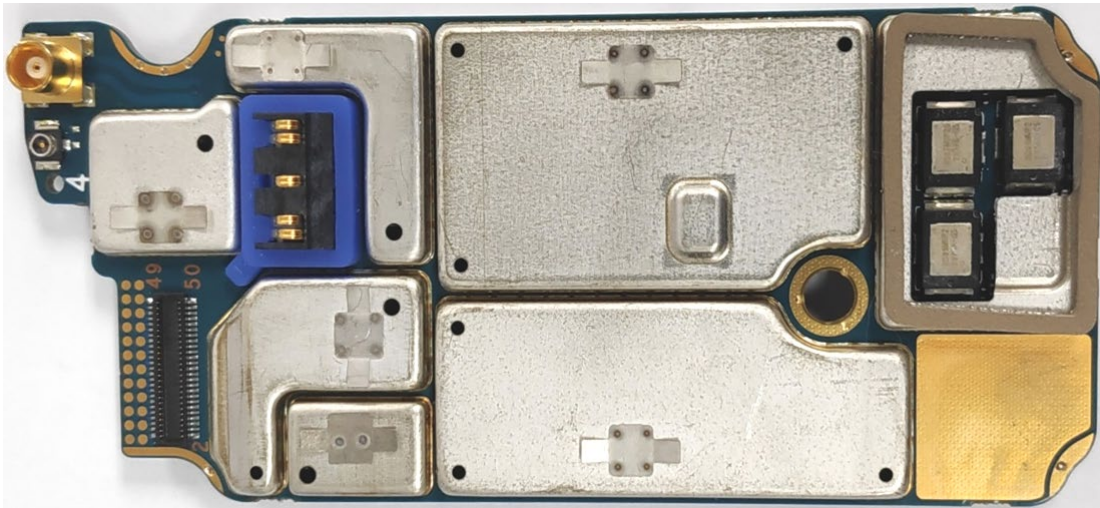
RF board with Shields (Top)
(APX8000H/ APX8000HXE)

Exhibit 9B



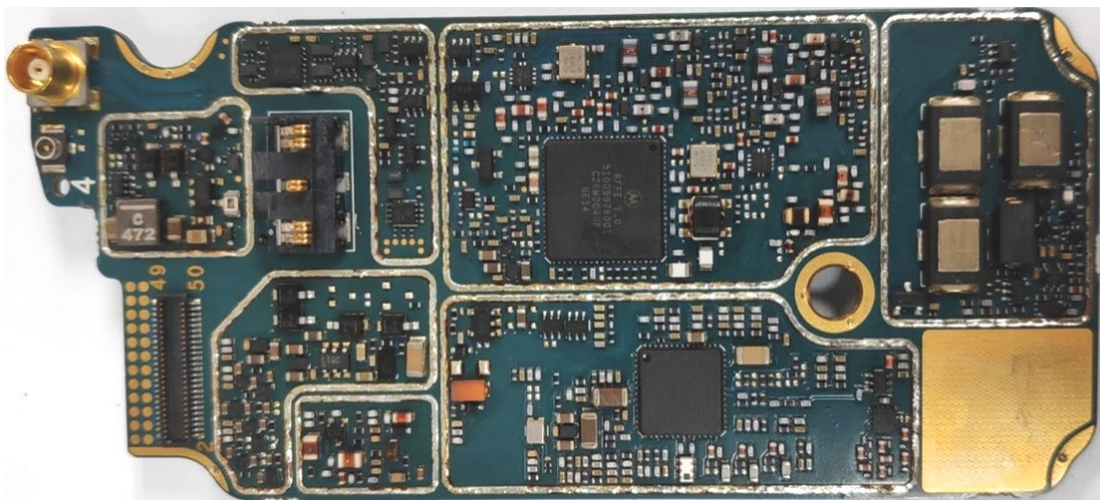
RF board without Shields (Top)
(APX8000H/ APX8000HXE)

Exhibit 9C



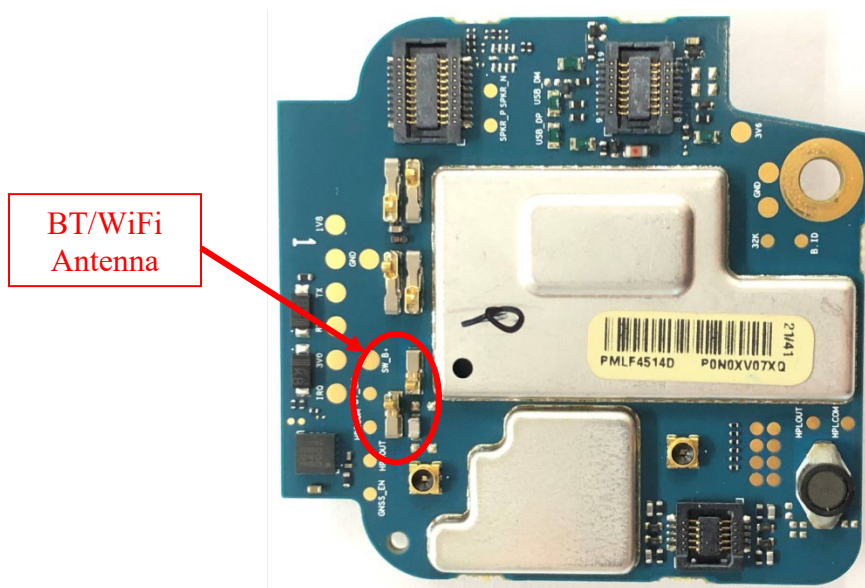
RF board with Shields (Bottom)
(APX8000H/ APX8000HXE)

Exhibit 9D



RF board without Shields (Bottom)
(APX8000H/ APX8000HXE)

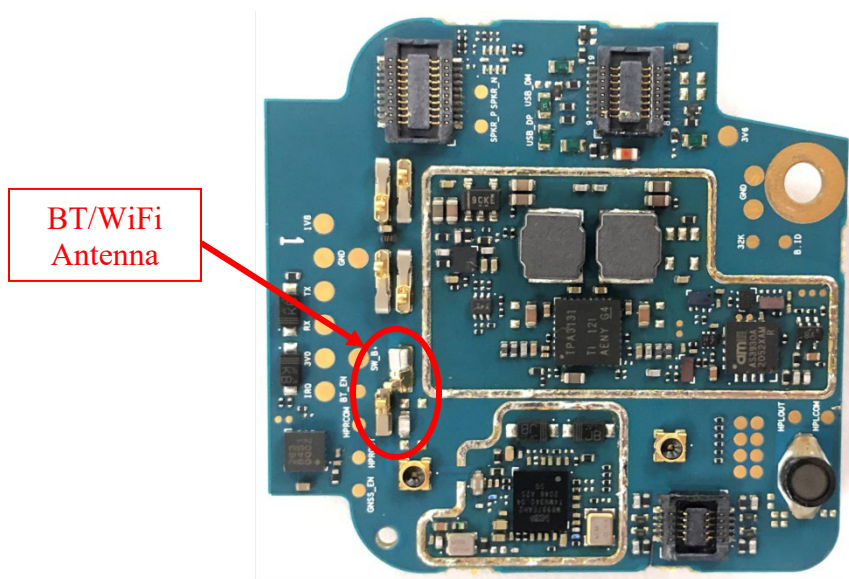
Exhibit 9E



BT/WiFi
Antenna

Expansion board with shields (Top)
(APX8000H/ APX8000HXE)

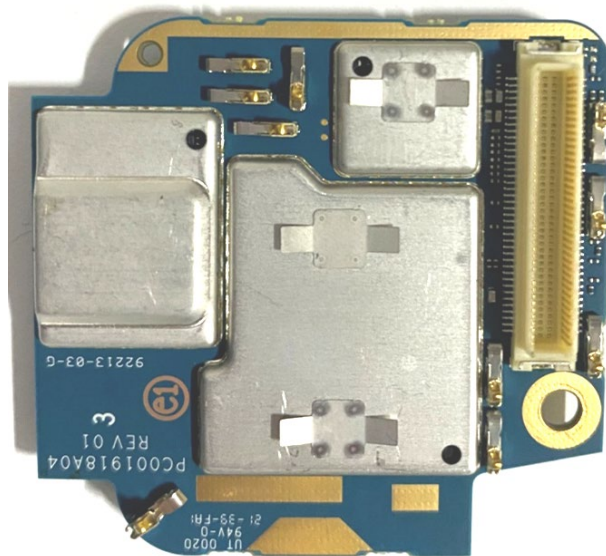
Exhibit 9F



BT/WiFi
Antenna

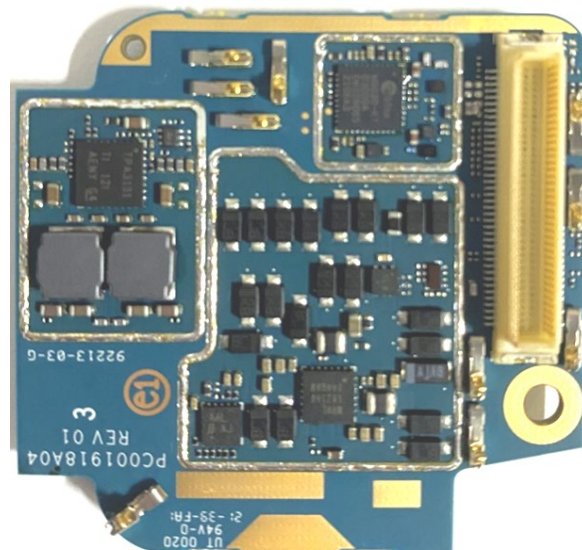
Expansion board without shields (Top)
(APX8000H/ APX8000HXE)

Exhibit 9G



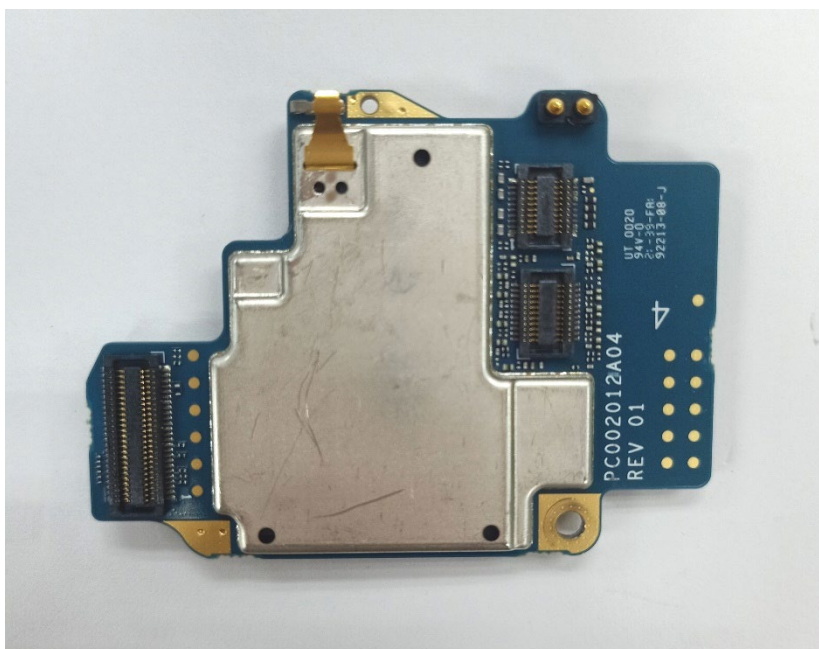
Expansion board with shields (Bottom)
(APX8000H/ APX8000HXE)

Exhibit 9H



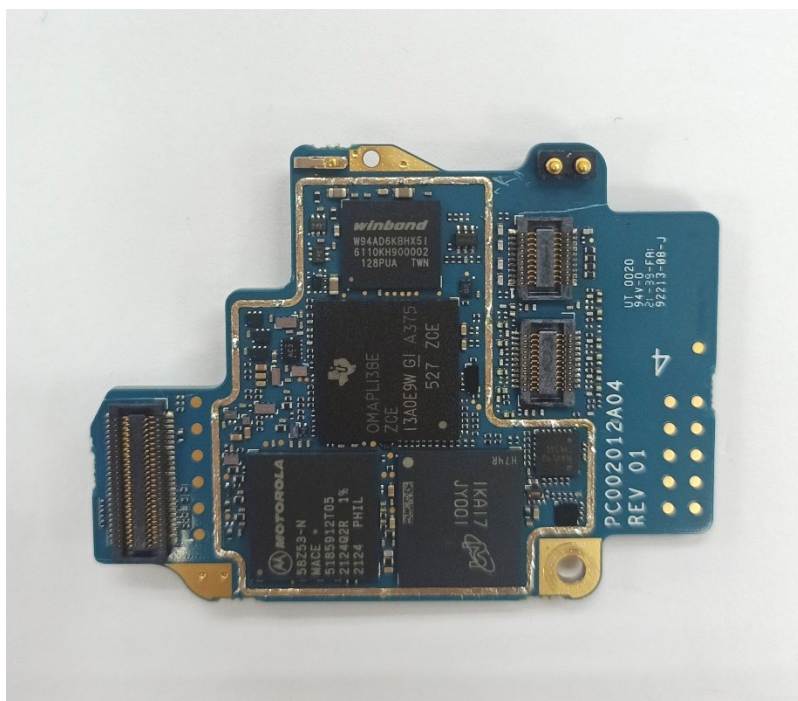
Expansion board without shields (Bottom)
(APX8000H/ APX8000HXE)

Exhibit 9I



Vocon board with shields (Top)
(APX8000H/ APX8000HXE)

Exhibit 9J



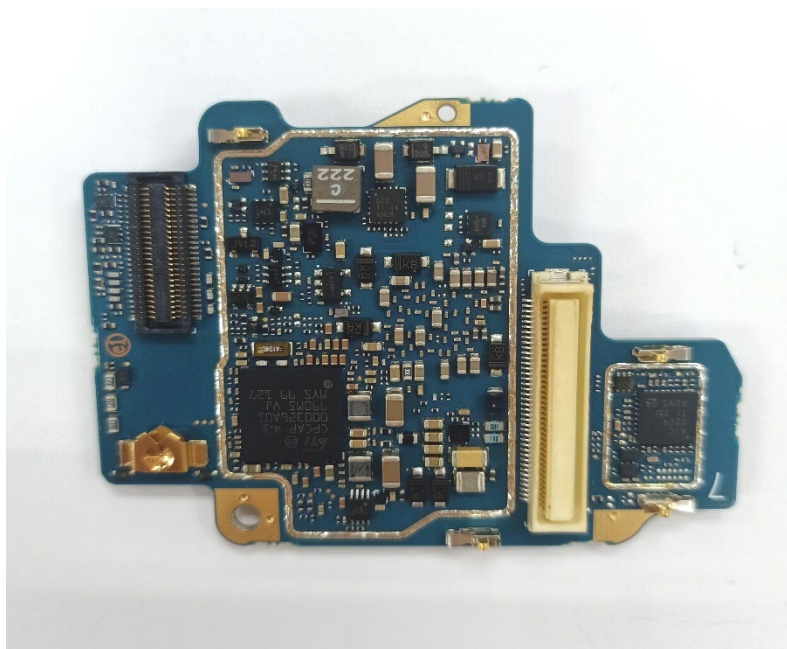
Vocon board without shields (Top)
(APX8000H/ APX8000HXE)

Exhibit 9K



Vocon board with shields (Bottom)
(APX8000H/ APX8000HXE)

Exhibit 9L



Vocon board without shields (Bottom)
(APX8000H/ APX8000HXE)

Exhibit 9M



RF and Vocon boards with chassis and housing of APX8000H Model 2.5 BLK/BRN (Front side)

*This overall photo for Model 2.5 is not taken per the latest changes. However, the respective board with change is shown on 9I & 9J

Exhibit 9N



Expansion board with chassis and housing of APX8000H Model 2.5 BLK/BRN (Back side)

*This overall photo for Model 2.5 is not taken per the latest changes. However, the respective board with change is shown on 9E & 9F.

Exhibit 90



RF and Vocon boards with chassis and housing of APX8000H Model 3.5 BLK/BRN (Front side)

Exhibit 9P



Expansion board with chassis and housing of APX8000H Model 3.5 BLK/BRN (Back side)

Exhibit 9Q



RF and Vocon boards with chassis and housing of APX8000HXE Model 1.5 (Front side)

Exhibit 9R



Expansion board with chassis and housing of APX8000HXE Model 1.5 (Back side)

Exhibit 9S



RF and Vocon boards with chassis and housing of APX8000HXE Model 2.5 (Front side)

*This overall photo for Model 2.5 is not taken per the latest changes. However, the respective board with change is shown on 9I & 9J

Exhibit 9T



Expansion board with chassis and housing of APX8000HXE Model 2.5 (Back side)

*This overall photo for Model 2.5 is not taken per the latest changes. However, the respective board with change is shown on 9E & 9F.

Exhibit 9U



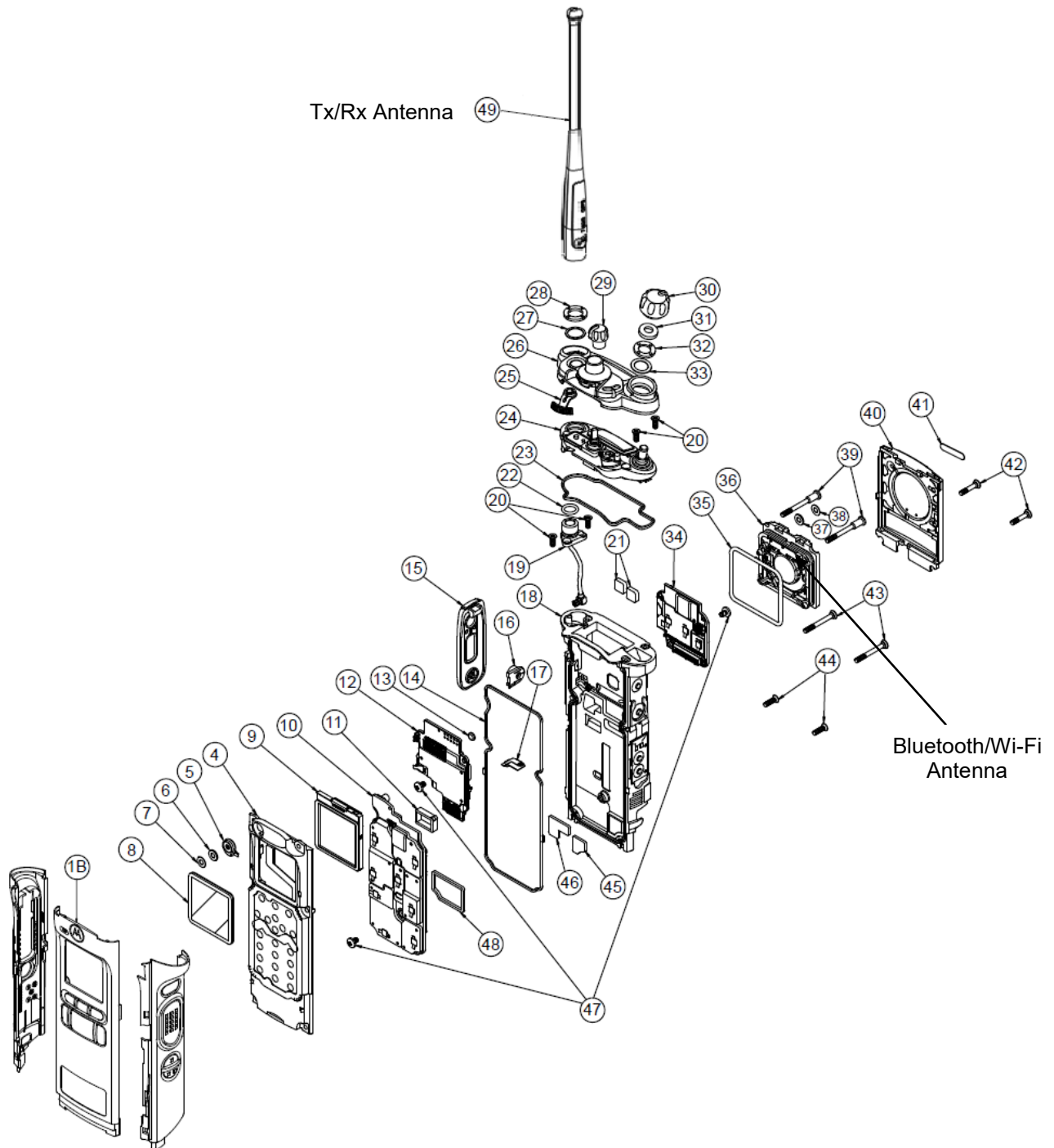
RF and Vocon boards with chassis and housing of APX8000HXE Model 3.5 (Front side)

Exhibit 9V

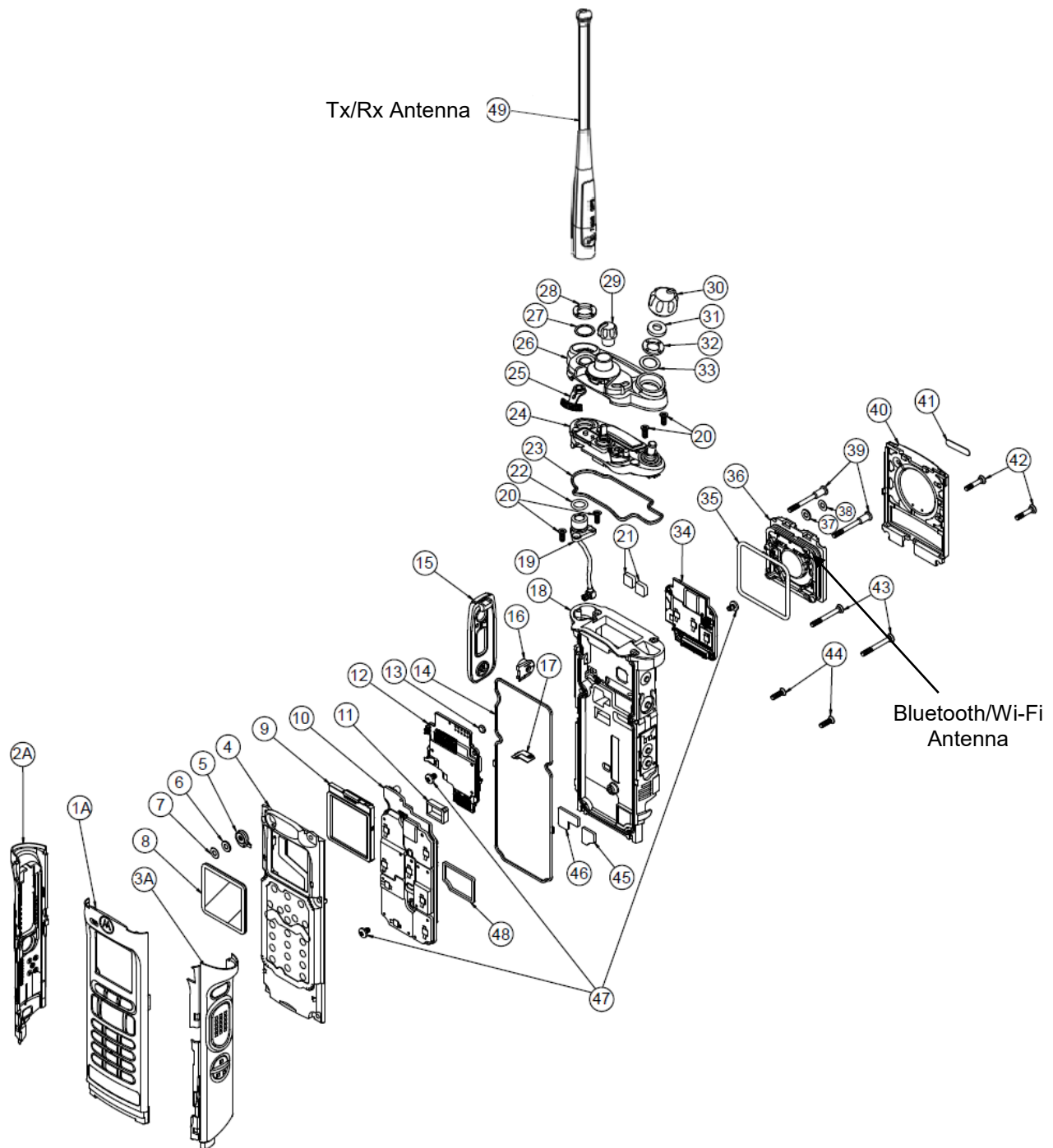


Expansion board with chassis and housing of APX8000HXE Model 3.5 (Back side)

Exhibit 9W

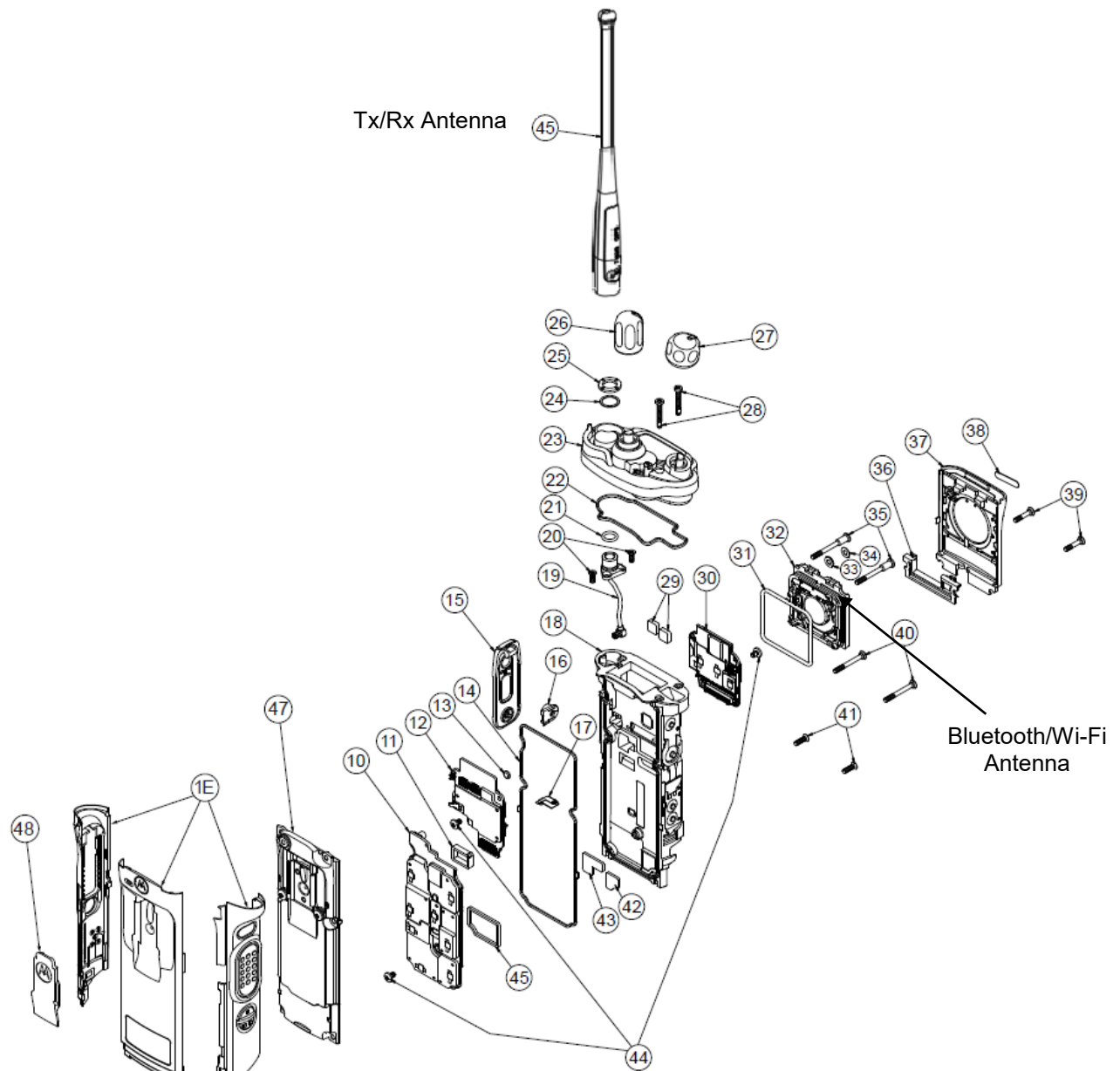


Exploded view of APX8000H Model 2.5 BLK/BRN

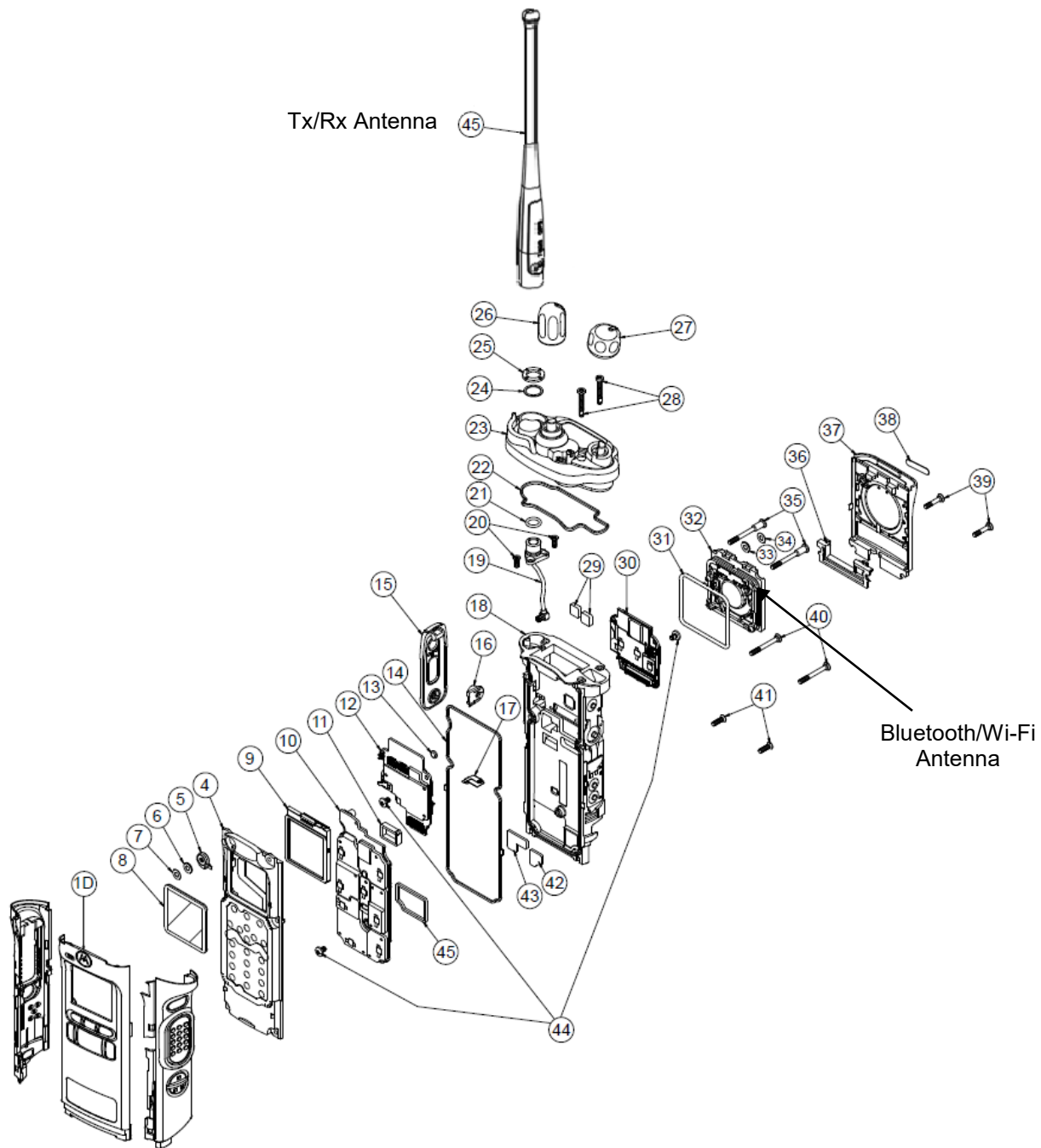
Exhibit 9X

Exploded view of APX8000H Model 3.5 BLK/BRN

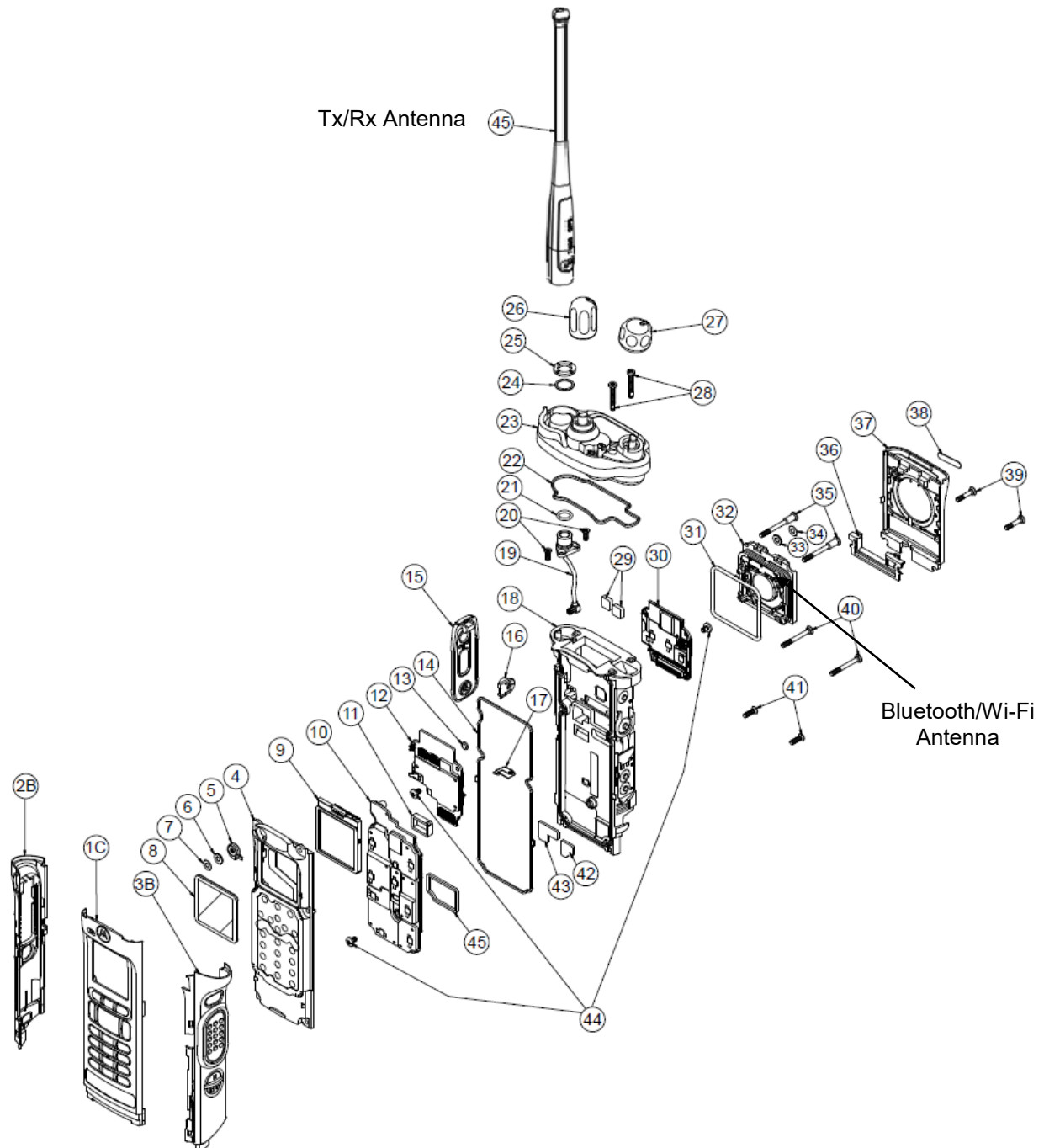
Exhibit 9Y



Exploded view of APX8000HXE Model 1.5 GRN

Exhibit 9Z

Exploded view of APX8000HXE Model 2.5 GRN

Exhibit 9AA

Exploded view of APX8000HXE Model 3.5 GRN