

**EXHIBIT 9****INTERNAL PHOTOGRAPHS**

(Pursuant to FCC Part 2.1033(b)(7), 2.1033(c)(14) and RSP 100 Sec 4)

The following photographs are attached.

	<u>Exhibit</u>
1. RF board <u>with</u> Shields (Top)	9A
2. RF board <u>without</u> Shields (Top)	9B
3. RF board <u>with</u> Shields (Bottom)	9C
4. RF board <u>without</u> Shields (Bottom)	9D
5. RF boards <u>with</u> chassis and housing for (Front Side), Model 3	9E
6. Chassis and housing (Back Side), Model 3	9F
7. RF boards <u>with</u> chassis and housing (Front Side), Model 2	9G
8. Chassis and housing (Back Side), Model 2	9H
9. Keypad Board (Top), Model 3	9I
10. Keypad Board (Bottom), Model 3	9J
11. Keypad Board (Top), Model 2	9K
12. Keypad Board (Bottom), Model 2	9L
13. Interface Board (Top)	9M
14. Interface Board (Bottom)	9N
15. Exploded view of radio (Model 3)	9O
16. Exploded view of radio (Model 2)	9P

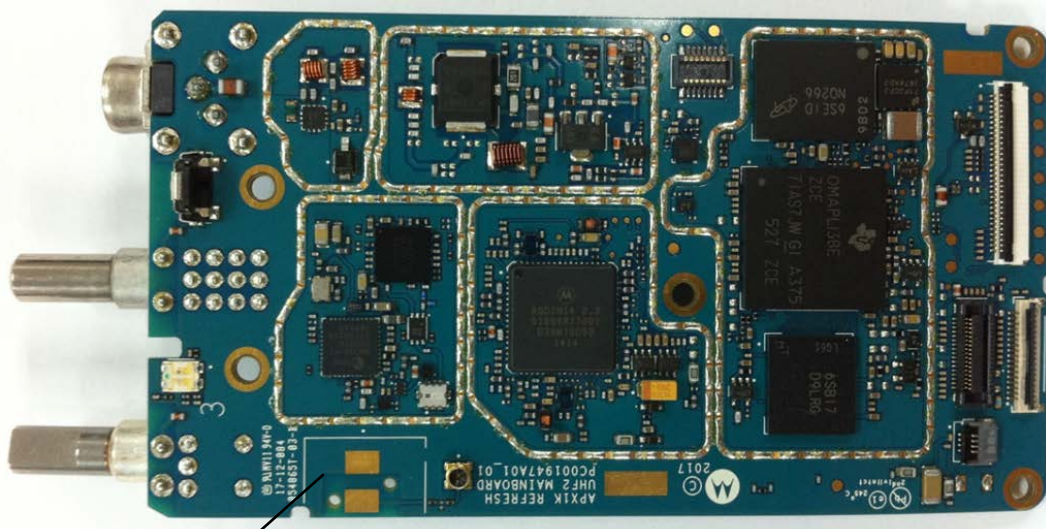
**Exhibits 9A**



To BT/WiFi Antenna

RF board with Shields (Top)  
(APX900 & VX-P949)

**Exhibit 9B**



To BT/WiFi Antenna

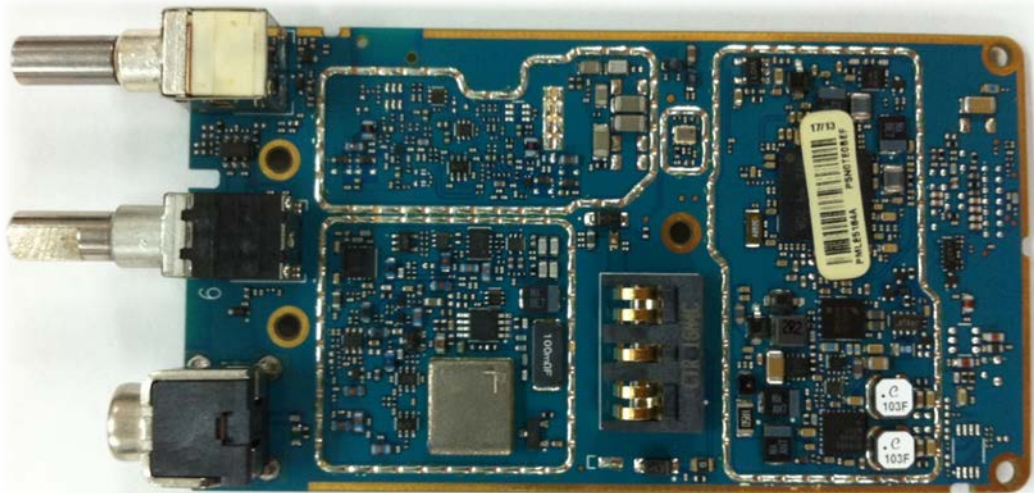
RF board without Shields (Top)  
(APX900 & VX-P949)

**Exhibit 9C**



RF board with Shields (Bottom)  
(APX900 & VX-P949)

**Exhibit 9D**



RF board without Shields (Bottom)  
(APX900 & VX-P949)

**Exhibit 9E**



RF boards with chassis and housing (Front Side), Model 3 (APX900)



RF boards with chassis and housing (Front Side), Model 3 (VX-P949)

**Exhibit 9F**



Chassis and housing for (Back Side), Model 3 (APX900)



Chassis and housing for (Back Side), Model 3  
(VX-P949)

**Exhibit 9G**



RF boards with chassis and housing (Front Side), Model 2 (APX900)

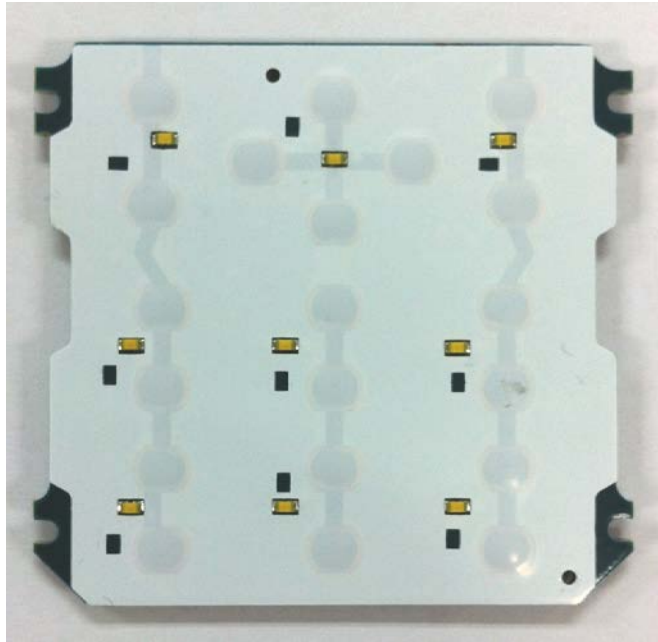


**Exhibit 9H**



Chassis and housing (Back Side), Model 2 (APX900)

**Exhibit 9I**



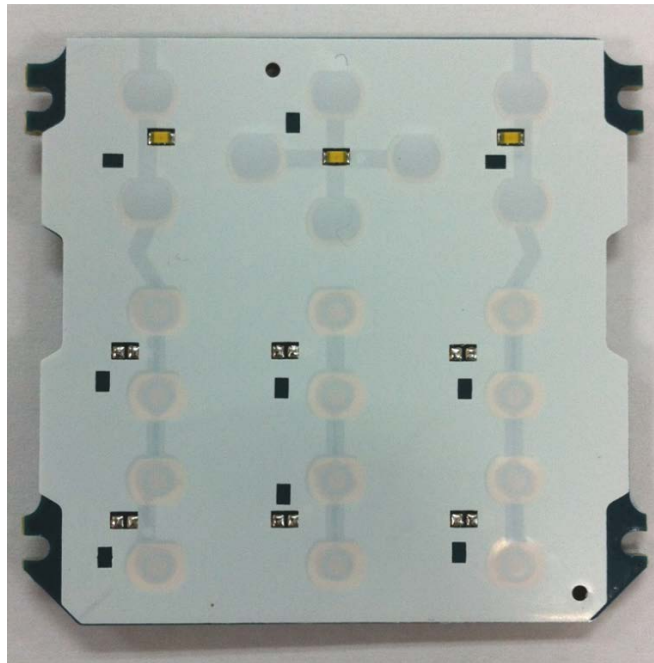
Keypad Board (Top), Model 3  
(APX900 & VX-P949)

**Exhibit 9J**



Keypad Board (Bottom), Model 3  
(APX900 & VX-P949)

**Exhibit 9K**



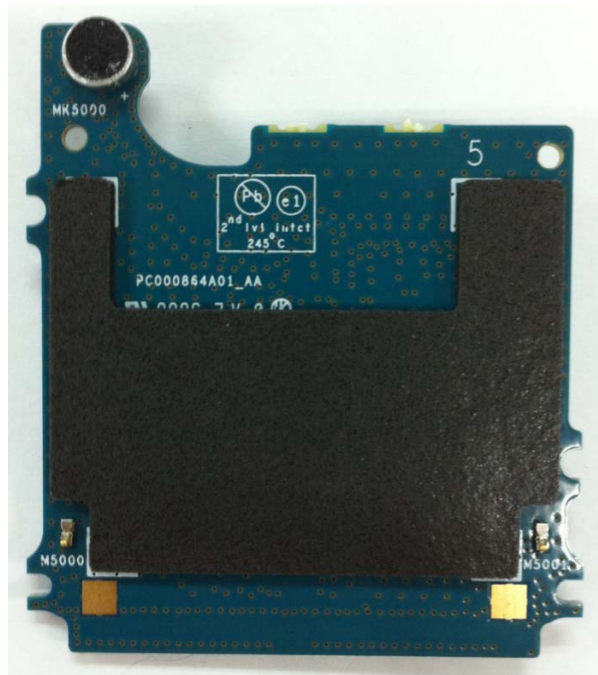
Keypad Board (Top), Model 2  
(APX900)

**Exhibit 9L**



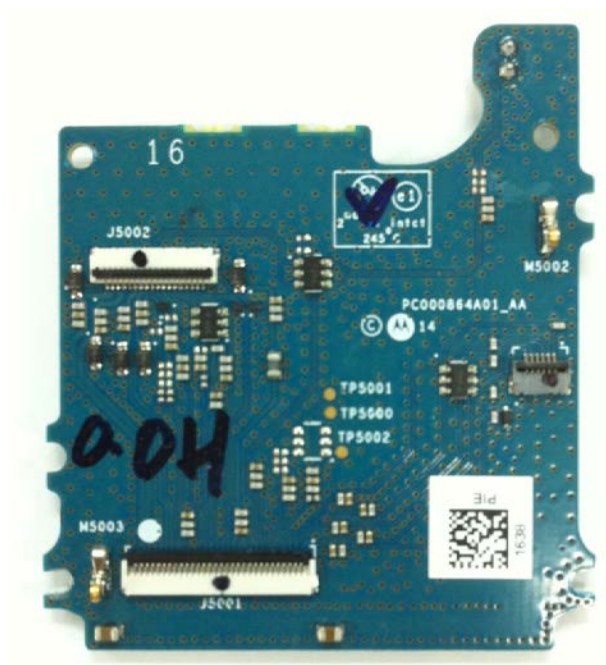
Keypad Board (Bottom), Model 2  
(APX900)

**Exhibit 9M**



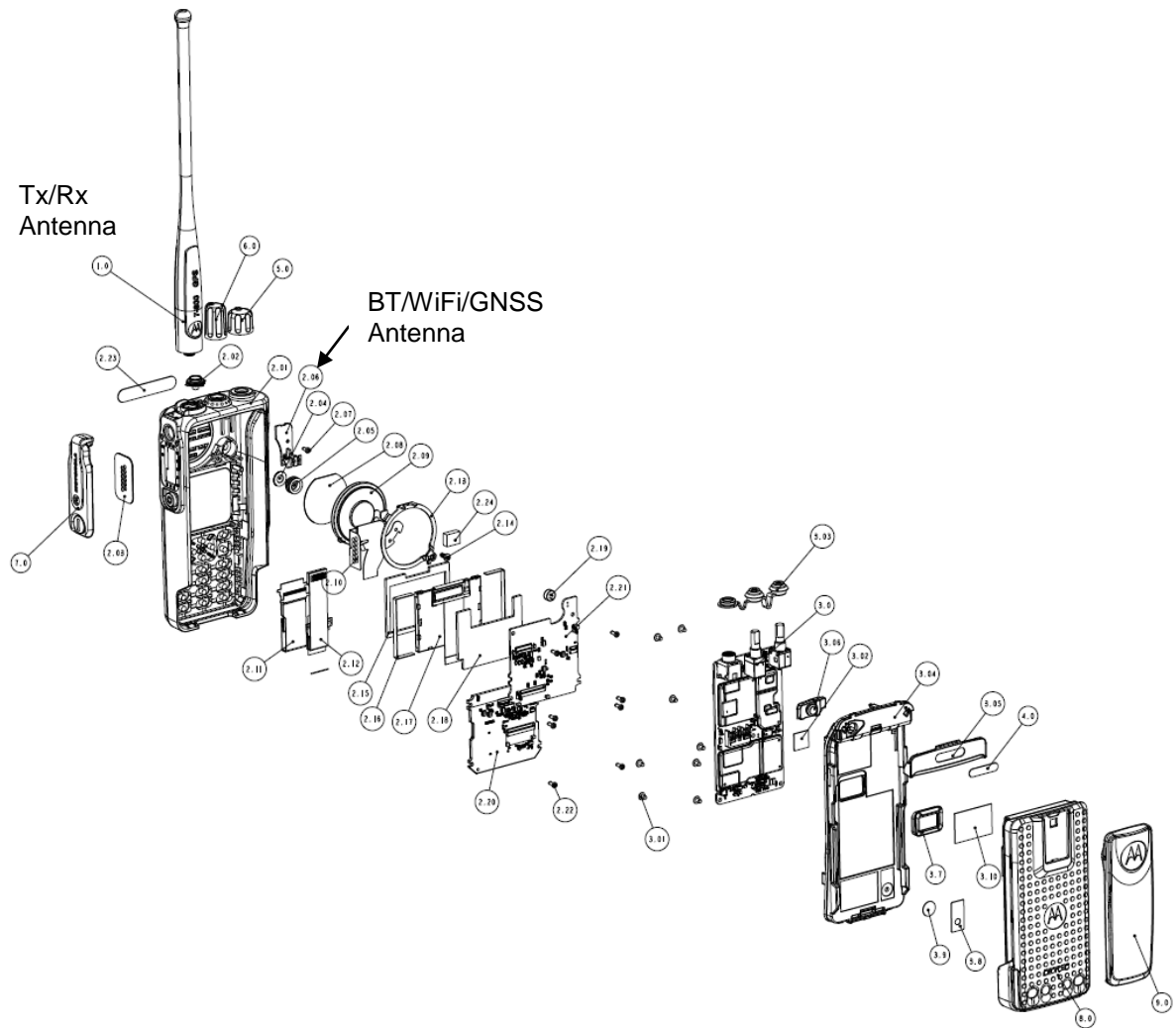
Interface Board (Top)  
(APX900 & VX-P949)

**Exhibit 9N**

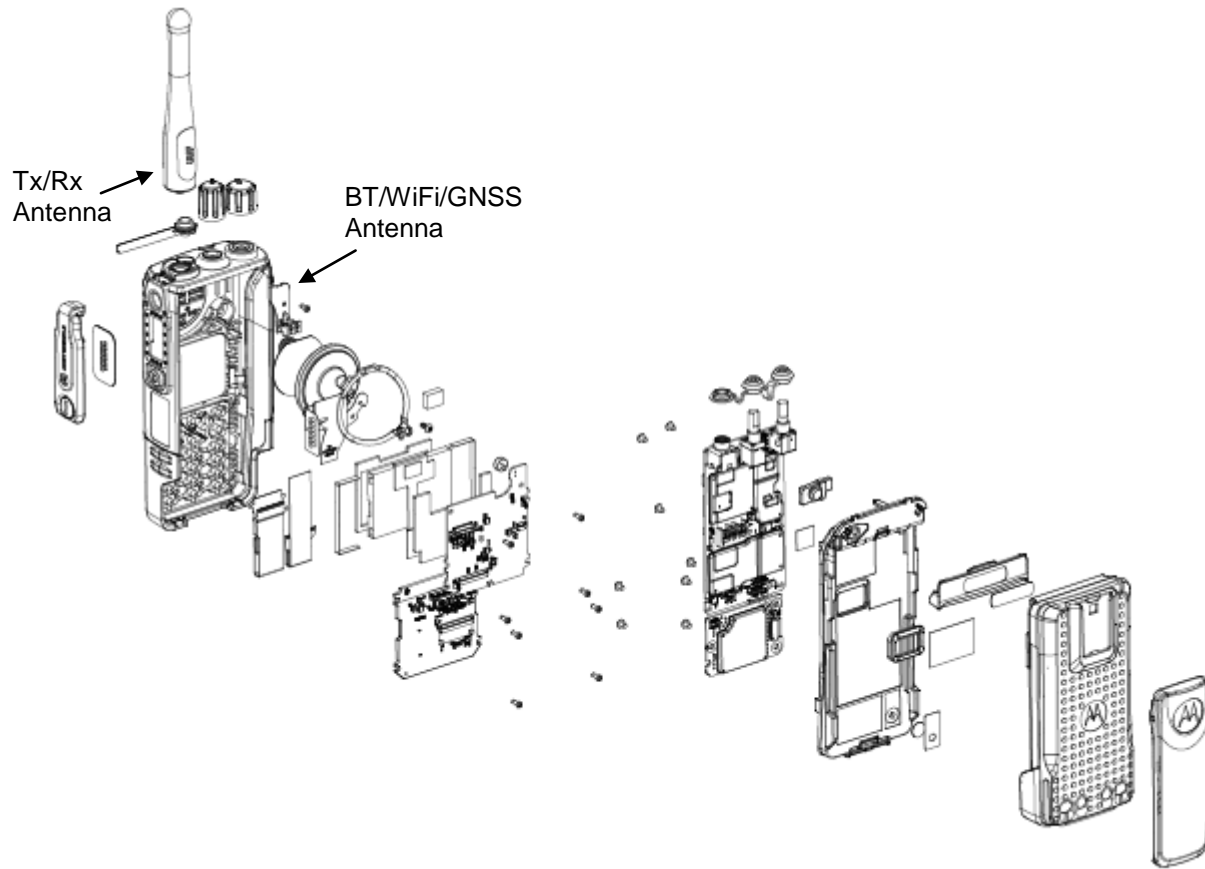


Interface Board (Bottom)  
(APX900 & VX-P949)

**Exhibit 90**

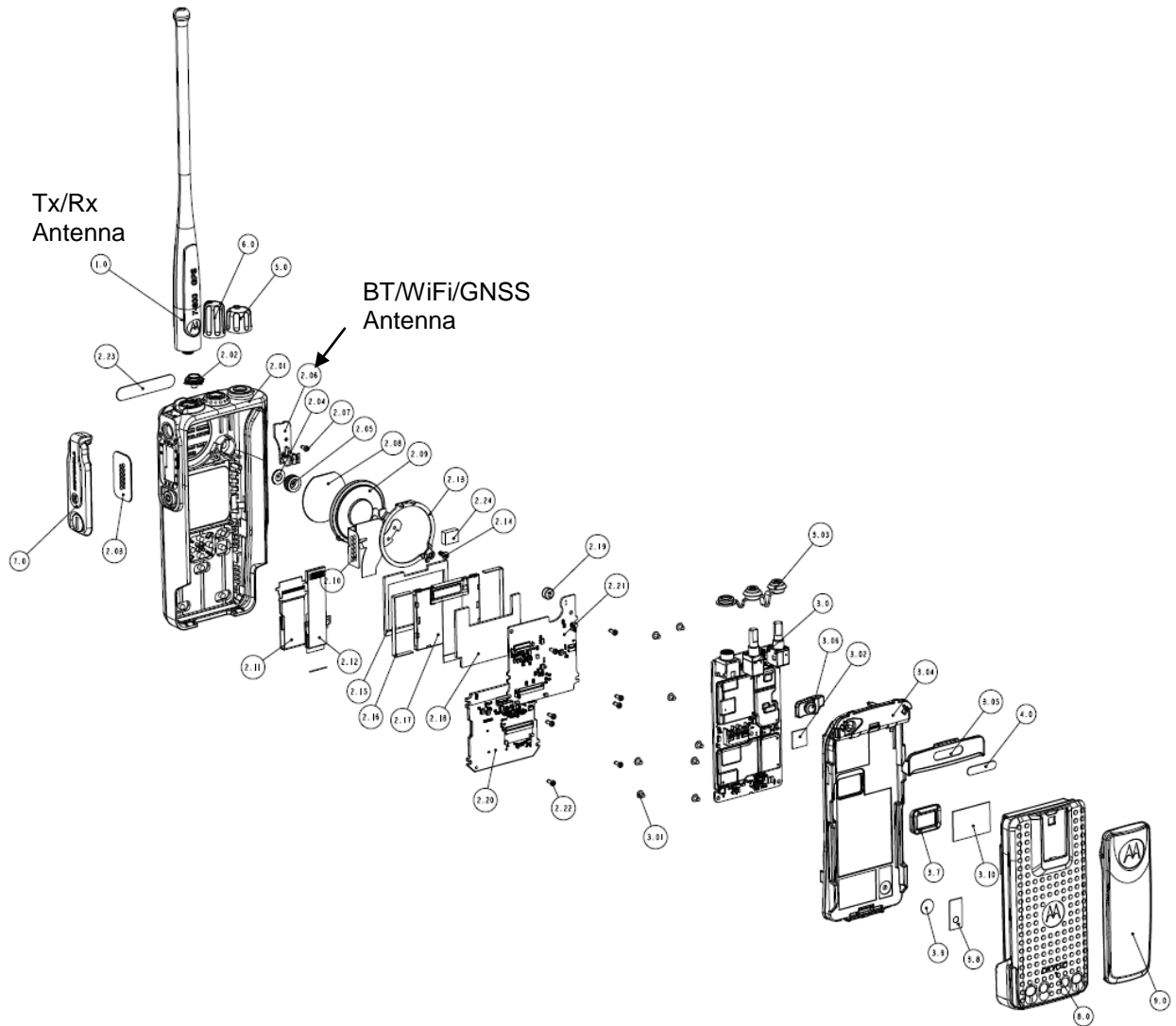


Exploded View of Radio (Model 3) (APX900)



Exploded View of Radio (Model 3) (VX-P949)

**Exhibit 9P**



Exploded View of Radio (Model 2) (APX900)