

**EXHIBIT 9****INTERNAL PHOTOGRAPHS**

(Pursuant to FCC Part 2.1033(b)(7), 2.1033(c)(14) and RSP 100 Sec 4)

The following photographs are attached.

**Exhibit**

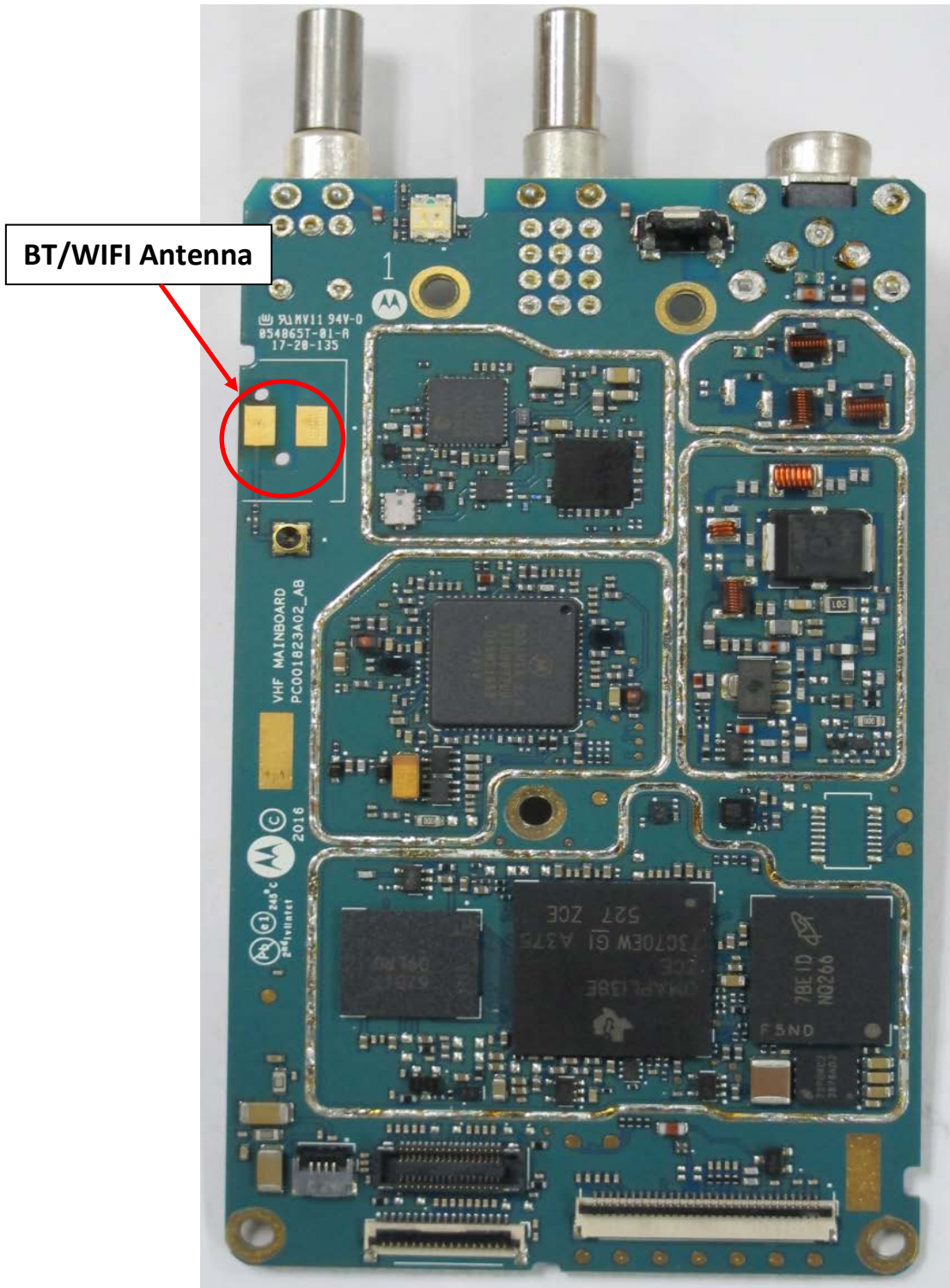
1. RF board with Shields (Top – APX900 & VX-P949)	9A
2. RF board without Shields (Top) – APX900 & VX-P949	9B
3. RF board with Shields (Bottom –APX900 & VX-P949)	9C
4. RF board without Shields (Bottom – APX900 & VX-P949).	9D
5. RF board with chassis and housing (front), Model 3 – APX900	9E
6. Chassis and housing (back), Model 3 -APX900	9F
7. RF board with chassis and housing (front), Model 2 – APX900	9G
8. Chassis and housing (back), Model 2 – APX900 – APX900	9H
9. RF board with chassis and housing (front), Model 3- VX-P949	9I
10. Chassis and housing (back), Model 3 VX-P949	9J
11. Keypad board (Top), Model 3- APX900	9K
12. Keypad board (Bottom), Model 3 – APX900	9L
13. Keypad board (Top), Model 2 – APX900	9M
14. Keypad board (Bottom), Model 2 – APX900	9N
15. Keypad board (Top), Model 3 – VX-P949	9O
16. Keypad board (Bottom), Model 3 – VX-P949	9P
17. Interface Board (Top) APX900 & VX-P949	9Q
18. Interface Board (Bottom) APX900 & VX-P949	9R
19. Exploded View of radio (Model 3) – APX900	9S
20. Exploded View of radio (Model 2) – APX900	9T
21. Exploded View of radio (Model 3) –VX-P949	9U

**Exhibits 9A**



RF board with Shields (Top)  
(APX900 & VX-P949)

**Exhibit 9B**



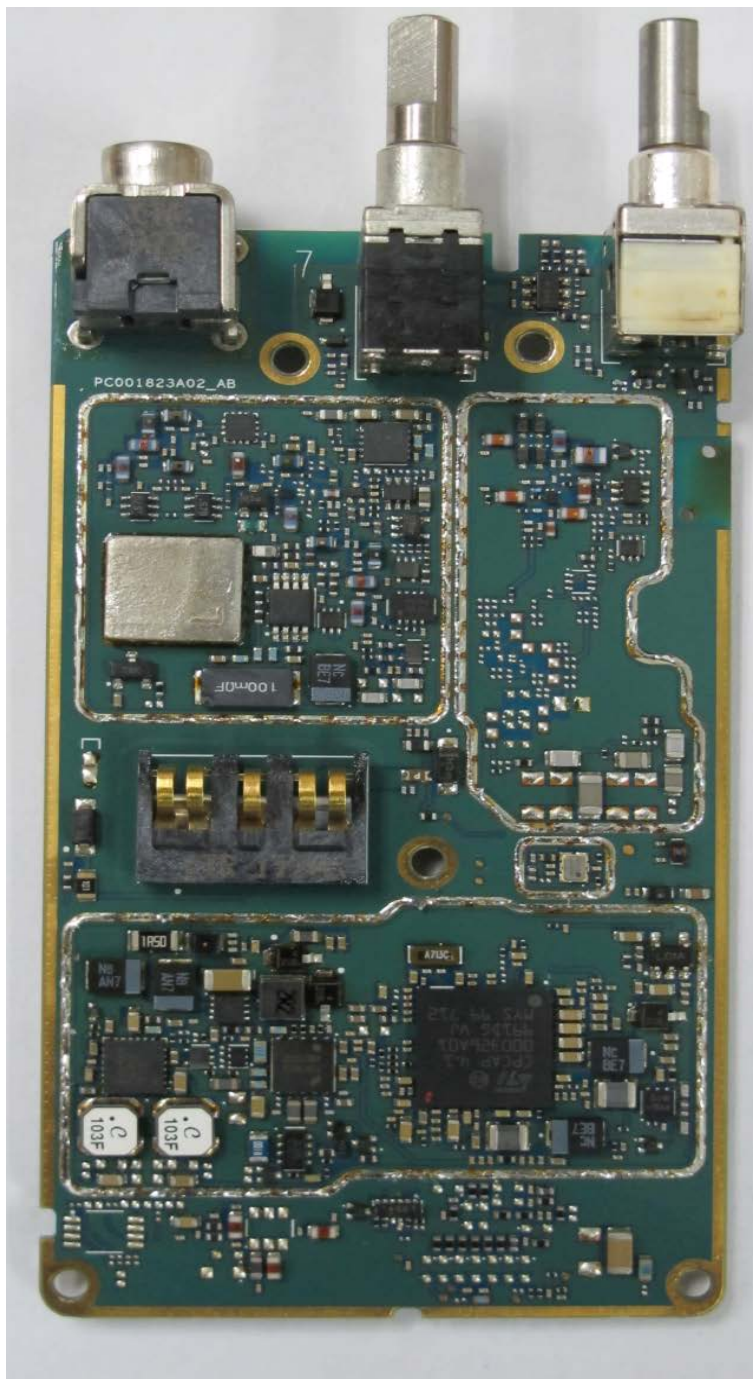
RF board without Shields (Top)  
(APX900 & VX-P949)

**Exhibit 9C**



RF board with Shields (Bottom)  
(APX900 & VX-P949)

**Exhibit 9D**



RF board without Shields (Bottom)  
(APX900 & VX-P949)

**Exhibit 9E**



RF board with chassis and housing (front) Model 3  
(APX900)

**Exhibit 9F**



Chassis and Housing (Back), Model 3  
(APX900)

**Exhibit 9G**



RF board with chassis and housing (front), Model 2  
(APX900)

**Exhibit 9H**



Chassis and Housing (Back), Model 2  
(APX900)

**Exhibit 9I**



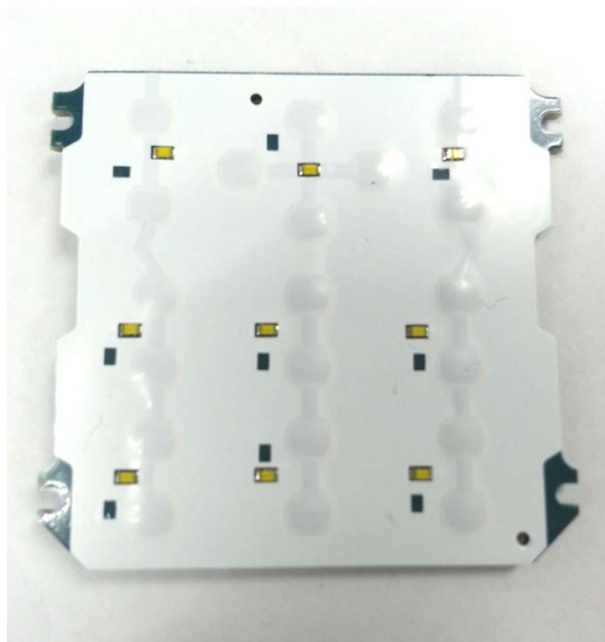
RF board with chassis and housing (front) Model 3  
(VX-P949)

**Exhibit 9J**



Chassis and Housing (Back), Model 3  
(VX-P949)

**Exhibit 9K**



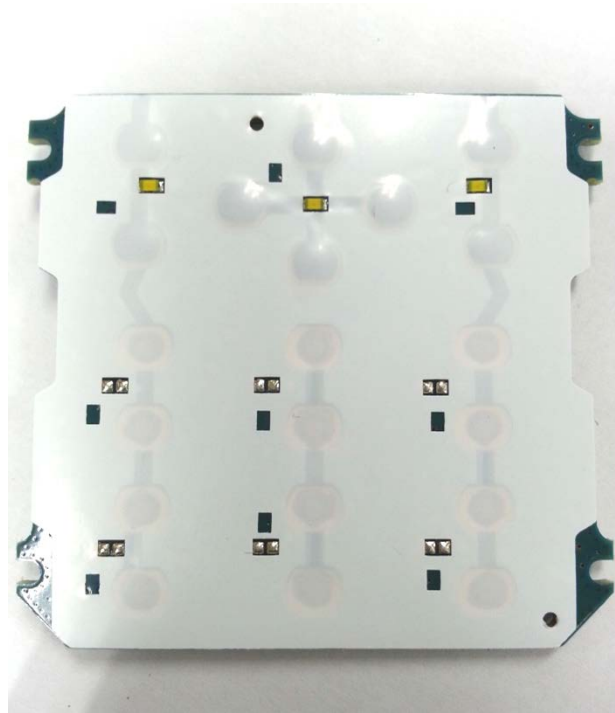
Keypad board (Top), Model 3  
(APX900)

**Exhibit 9L**



Keypad board (Bottom), Model 3  
(APX900)

**Exhibit 9M**



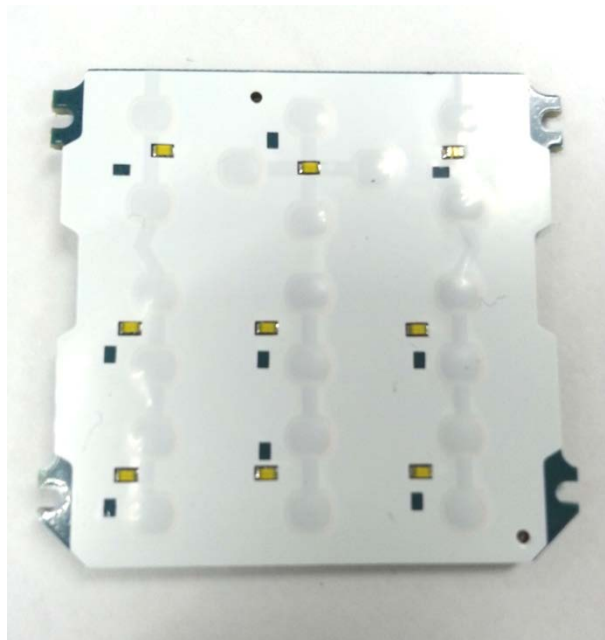
Keypad board (Top), Model 2  
(APX900)

**Exhibit 9N**



Keypad board (Bottom), Model 2  
(APX900)

**Exhibit 9Q**



Keypad board (Top), Model 3  
(VX-P949)

**Exhibit 9P**



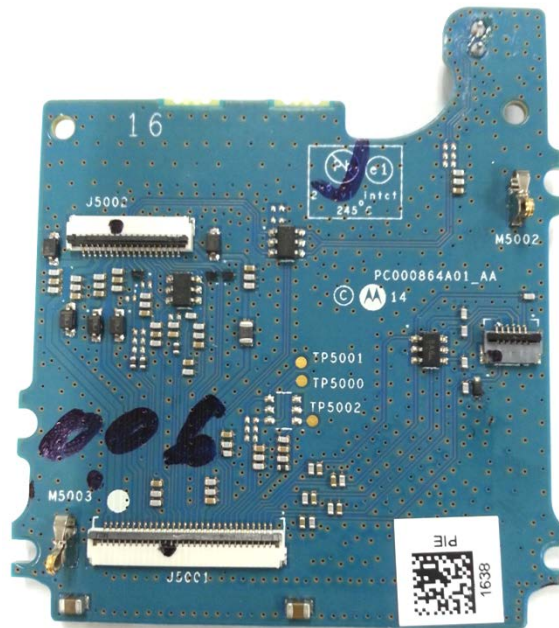
Keypad board (Bottom), Model 3  
(VX-P949)

**Exhibit 9Q**

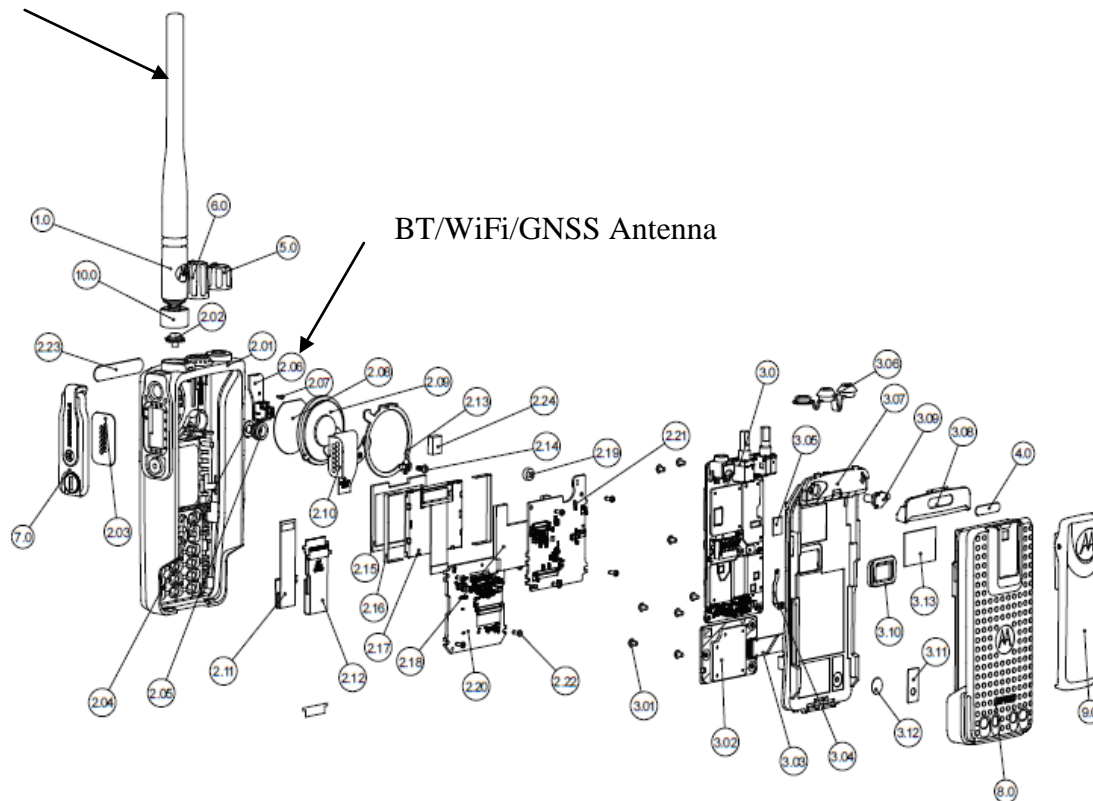


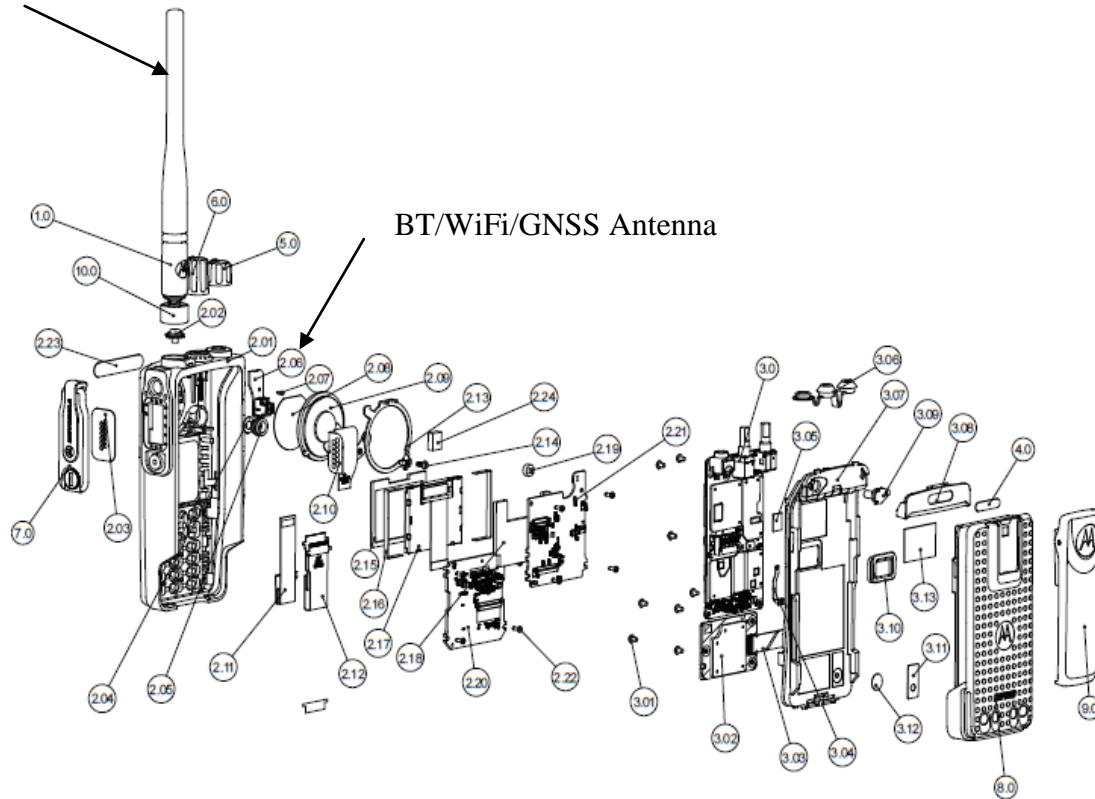
Interface board (Top)  
(APX900 & VX-P949)

**Exhibit 9R**



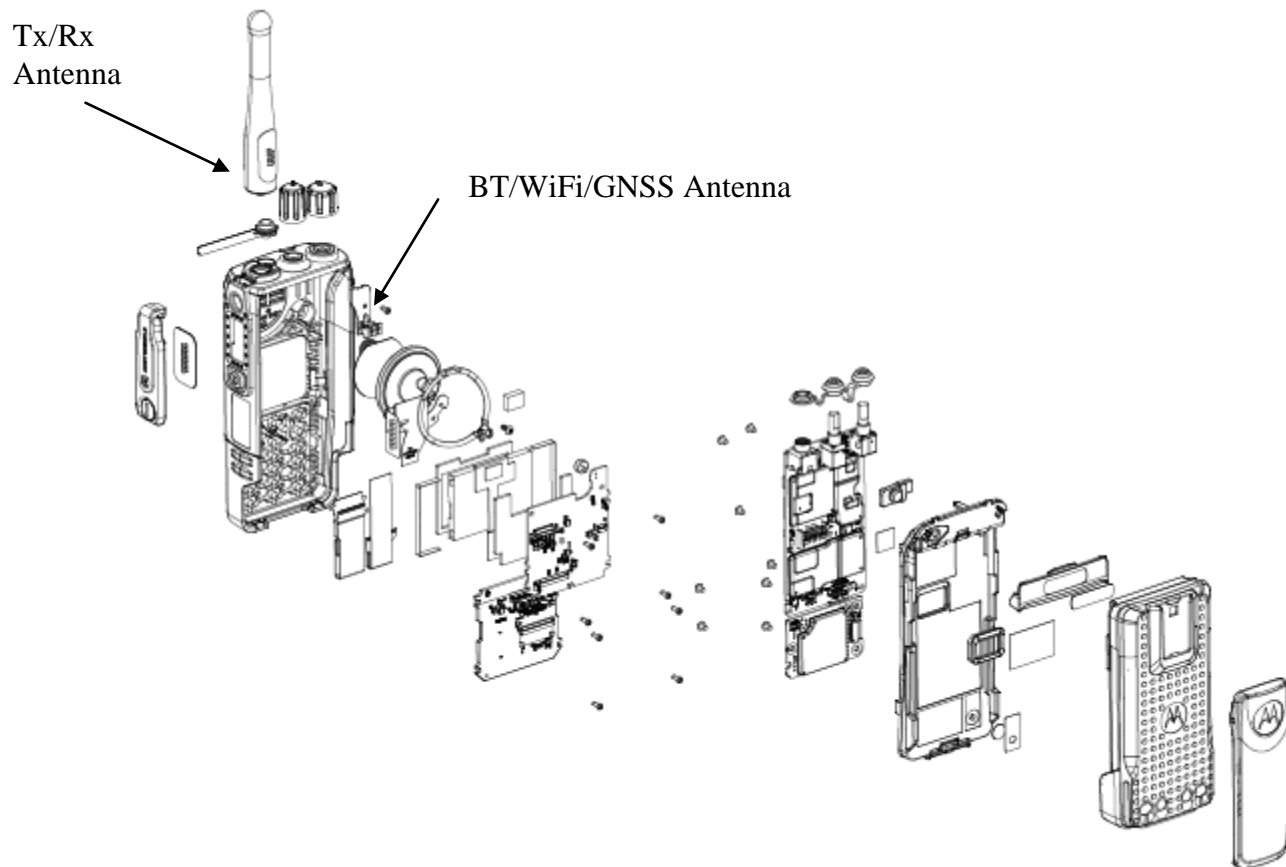
Interface board (Bottom)  
(APX900 & VX-P949)

**Exhibit 9S**Tx/Rx  
Antenna

**Exhibit 9T**Tx/Rx  
Antenna

Exploded View of Radio (Model 2) – APX900

**Exhibit 9U**



Exploded View of Radio (Model 3) - VX-P949