

EXHIBIT 9**INTERNAL PHOTOGRAPHS**

(Pursuant to FCC Part 2.1033(b)(7), 2.1033(c)(14) and RSP 100 Sec 4)

The following photographs are attached.

	<u>Exhibit</u>
1. RF board <u>with</u> Shields (Top)	9A
2. RF board <u>without</u> Shields (Top)	9B
3. RF board <u>with</u> Shields (Bottom)	9C
4. RF board <u>without</u> Shields (Bottom)	9D
5. RF boards <u>with</u> chassis and housing for (Front Side), Model 3	9E
6. Chassis and housing (Back Side), Model 3	9F
7. RF boards <u>with</u> chassis and housing (Front Side), Model 2	9G
8. Chassis and housing (Back Side), Model 2	9H
9. Keypad Board (Top), Model 3	9I
10. Keypad Board (Bottom), Model 3	9J
11. Keypad Board (Top), Model 2	9K
12. Keypad Board (Bottom), Model 2	9L
13. Interface Board (Top)	9M
14. Interface Board (Bottom)	9N
15. Exploded view of radio (Model 3)	9O
16. Exploded view of radio (Model 2)	9P

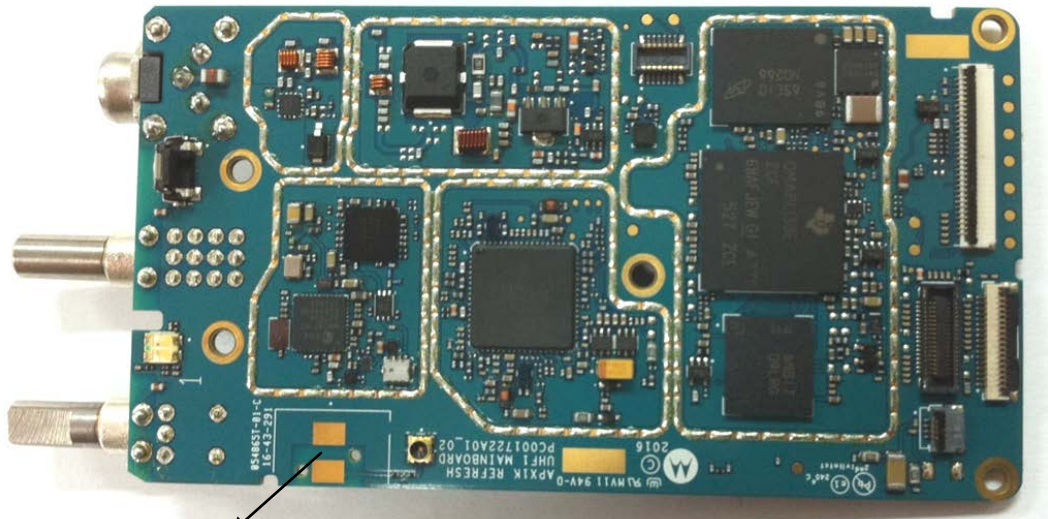
Exhibits 9A



To BT/WiFi Antenna

RF board with Shields (Top)
(APX900)

Exhibit 9B



To BT/WiFi Antenna

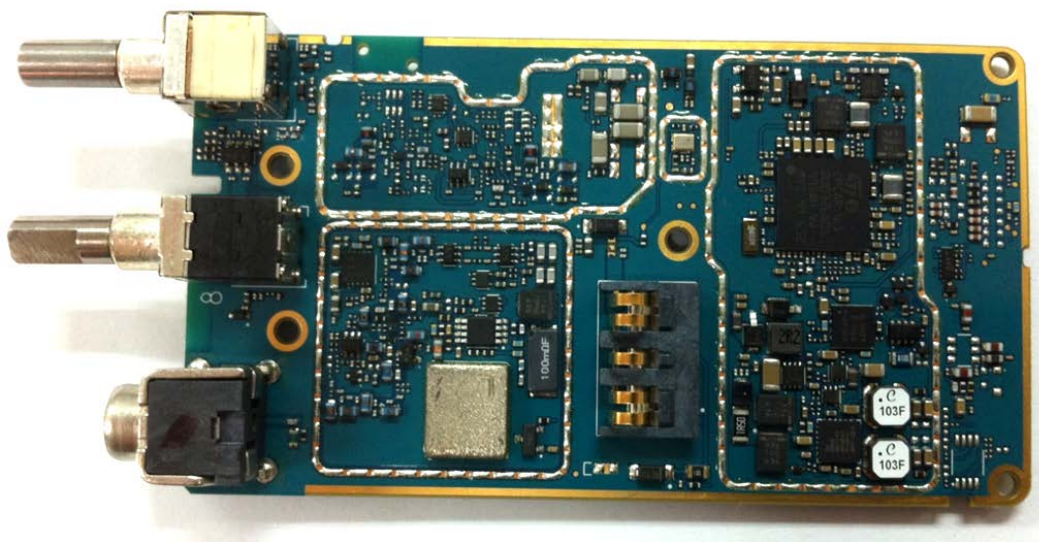
RF board without Shields (Top)
(APX900)

Exhibit 9C



RF board with Shields (Bottom)
(APX900)

Exhibit 9D



RF board without Shields (Bottom)
(APX900)

Exhibit 9E



RF boards with chassis and housing (Front Side), Model 3 (APX900)

Exhibit 9F



Chassis and housing for (Back Side), Model 3 (APX900)

Exhibit 9G



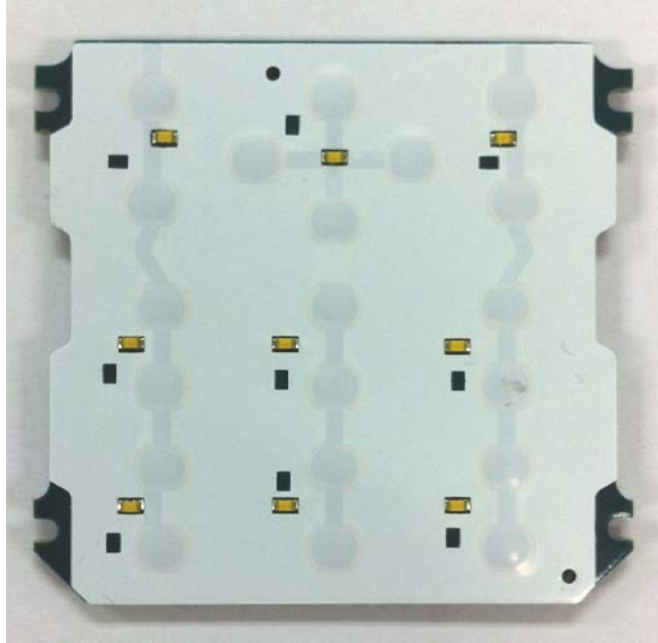
RF boards with chassis and housing (Front Side), Model 2 (APX900)

Exhibit 9H



Chassis and housing (Back Side), Model 2 (APX900)

Exhibit 9I



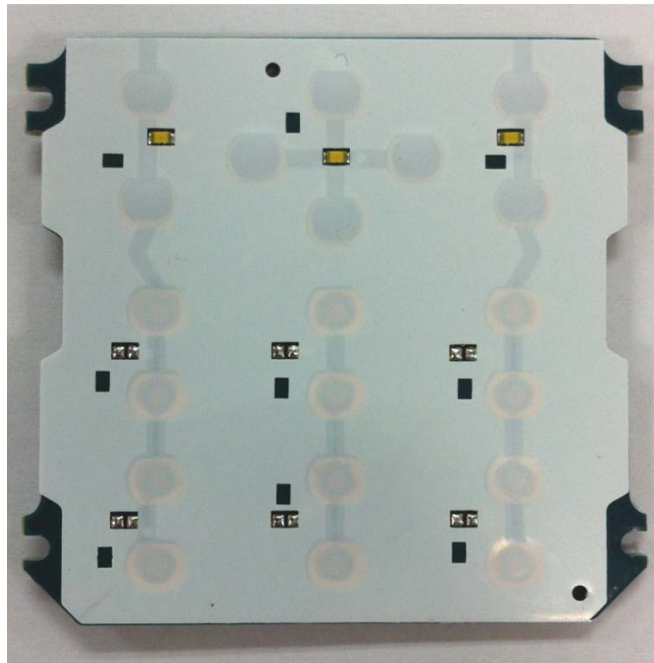
Keypad Board (Top), Model 3
(APX900)

Exhibit 9J



Keypad Board (Bottom), Model 3
(APX900)

Exhibit 9K



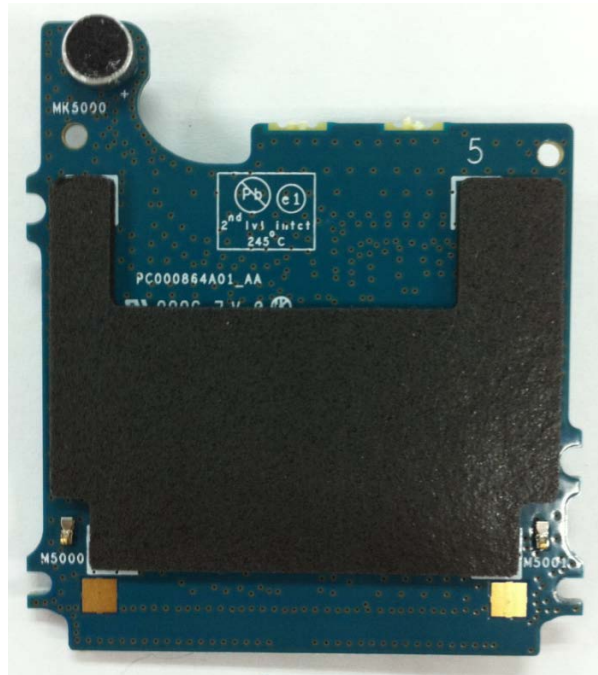
Keypad Board (Top), Model 2
(APX900)

Exhibit 9L



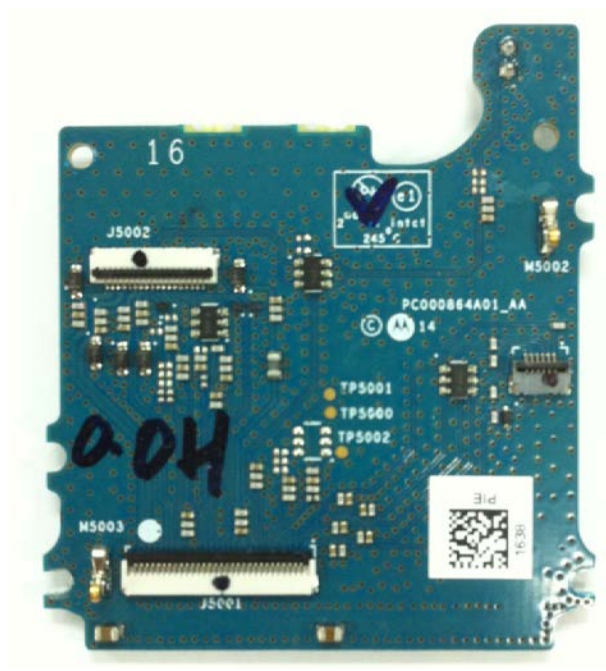
Keypad Board (Bottom), Model 2
(APX900)

Exhibit 9M



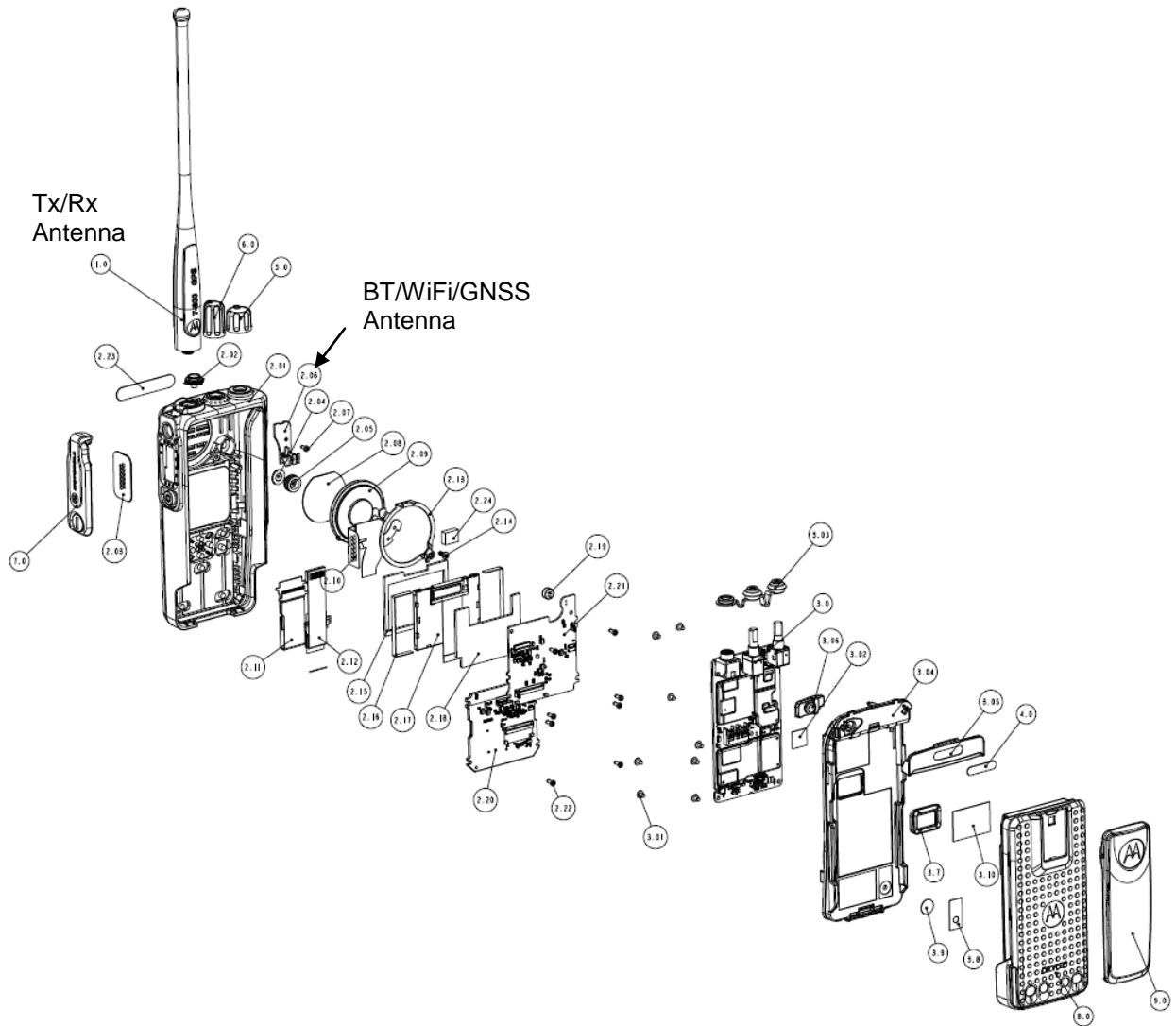
Interface Board (Top)
(APX900)

Exhibit 9N



Interface Board (Bottom)
(APX900)

Exhibit 9P



Exploded View of Radio (Model 2)