

**MOTOROLA**

TESTING CERT # 2518.01

Exhibit 7B: SAR Test Report Photographs**Enterprise Mobility Solutions****EME Test Laboratory**

8000 West Sunrise Blvd

Fort Lauderdale, FL. 33322

*Signature on file***Deanna Zakharia****EMS EME Lab Senior Resource Manager,
Laboratory Director****Approval Date: 3/8/10**

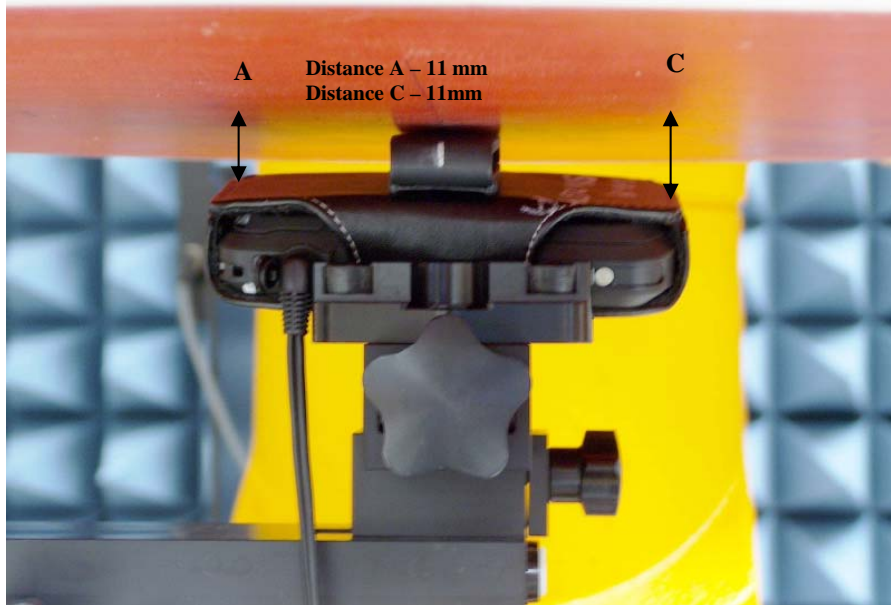
Exhibit 7B Revision History

Date	Revision	Comments
3/5/10	O	Initial release

1.0 Highest SAR Test Position per body location

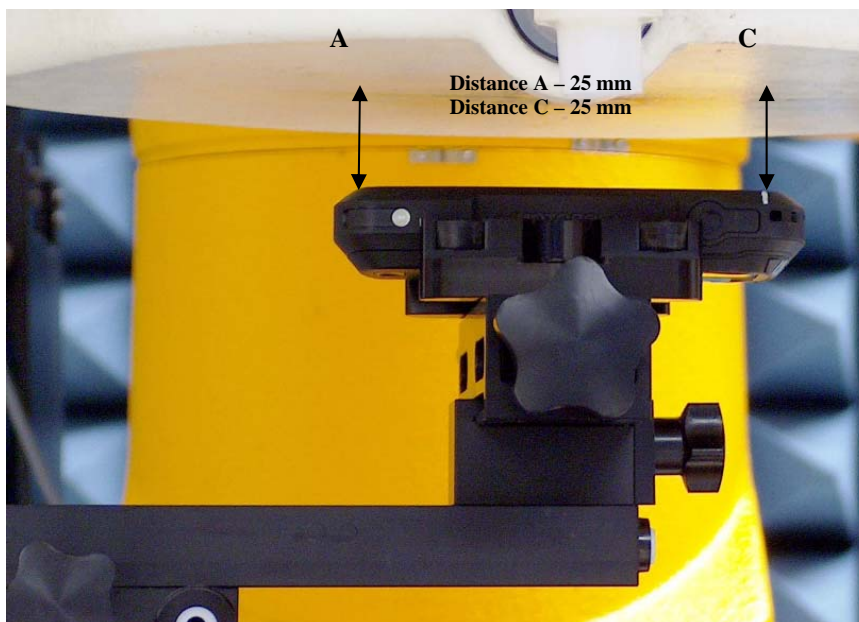
1.1 Body

DUT in pouch SYN2679A against the phantom using battery SNN5793A with camera facing phantom and with audio cable NNTN5211B attached. Same position used for other offered audio accessories (NNTN5330B, NNTN5774C) attached.



1.2 Face

DUT w/ front side separated 2.5cm from phantom with battery SNN5793A.

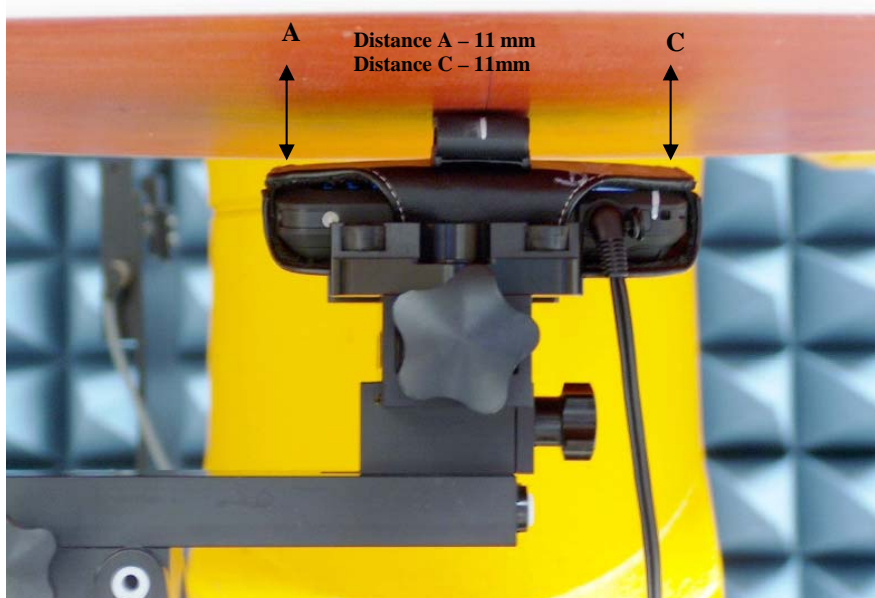


1.3 Head

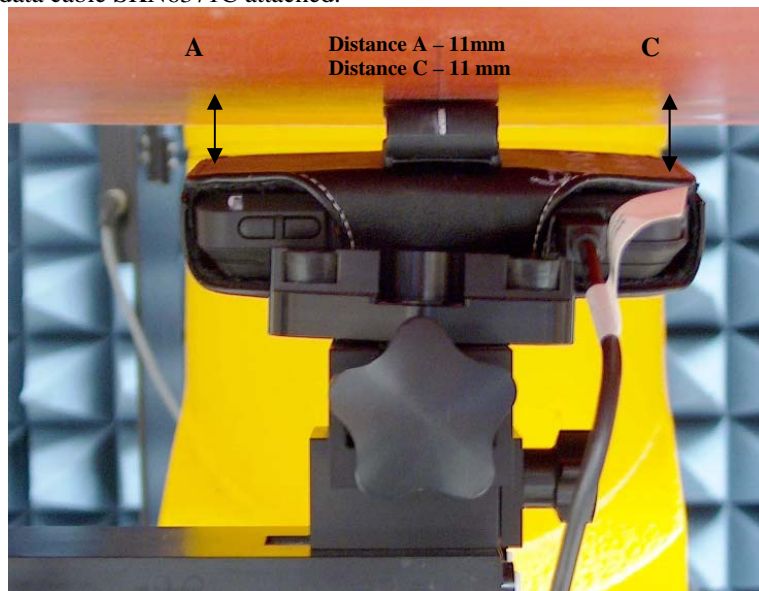
DUT at left ear in 15° tilt position using battery SNN5793A.

**1.4 Hand**
Not Applicable**2.0 Other SAR tested positions at the body****2.1 Body worn**

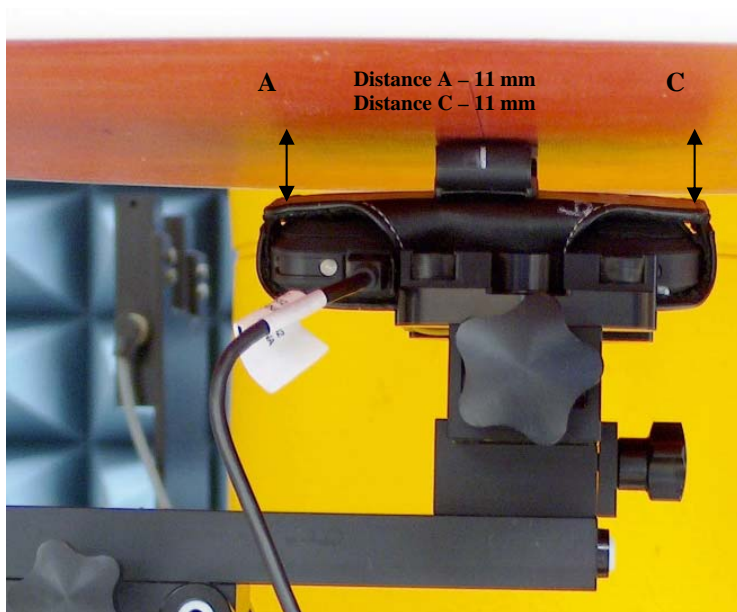
DUT in pouch SYN2679A against the phantom using battery SNN5793A with display facing phantom and with audio cable NNTN5211B attached. Same position was used for other offered audio accessories (NNTN5330B, NNTN5774C) attached.



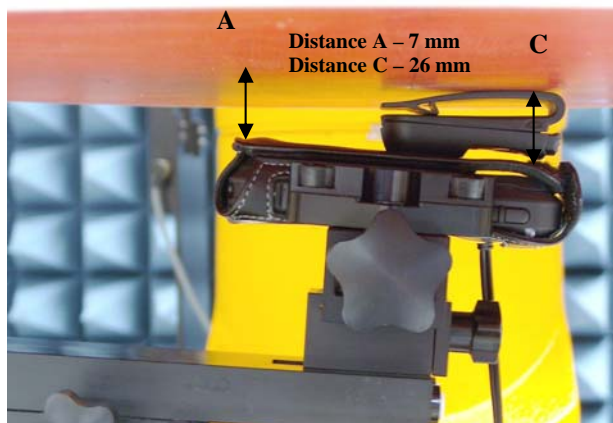
DUT in pouch SYN2679A against the phantom using battery SNN5793A with display facing phantom and with data cable SKN6371C attached.



DUT in pouch SYN2679A against the phantom using battery SNN5793A with camera facing phantom and with data cable SKN6371C attached.



DUT in body worn SYN2685A against the phantom with battery SNN5793A.

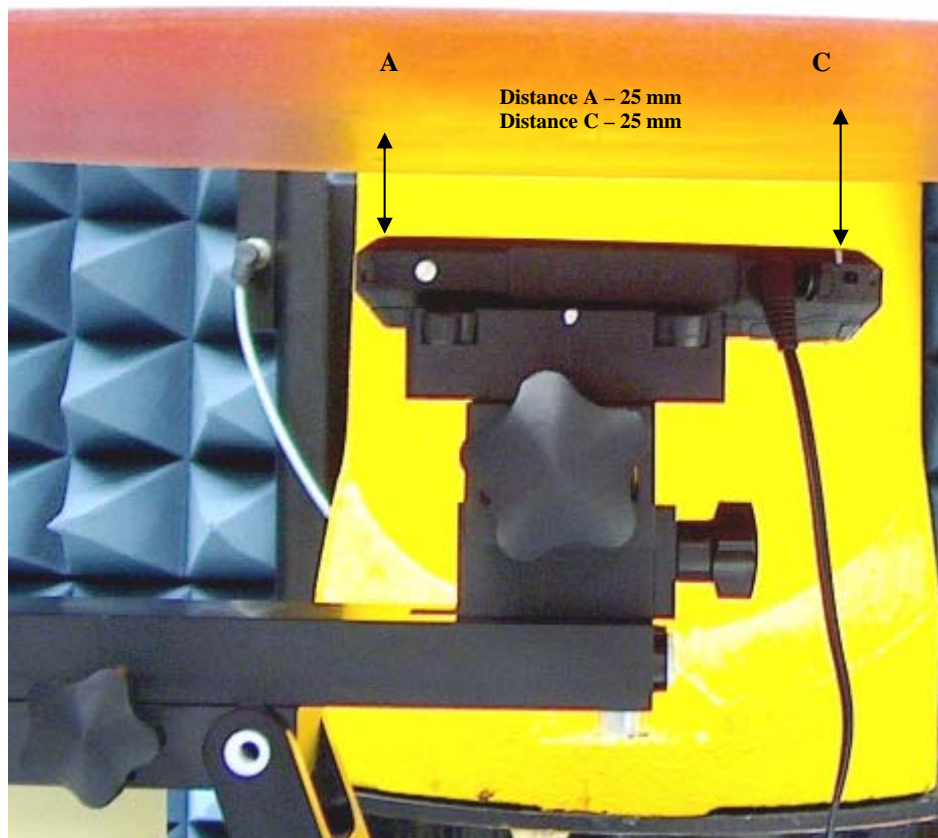


2.2 Front Side against phantom
Not Applicable

2.3 Back side against phantom
Not Applicable

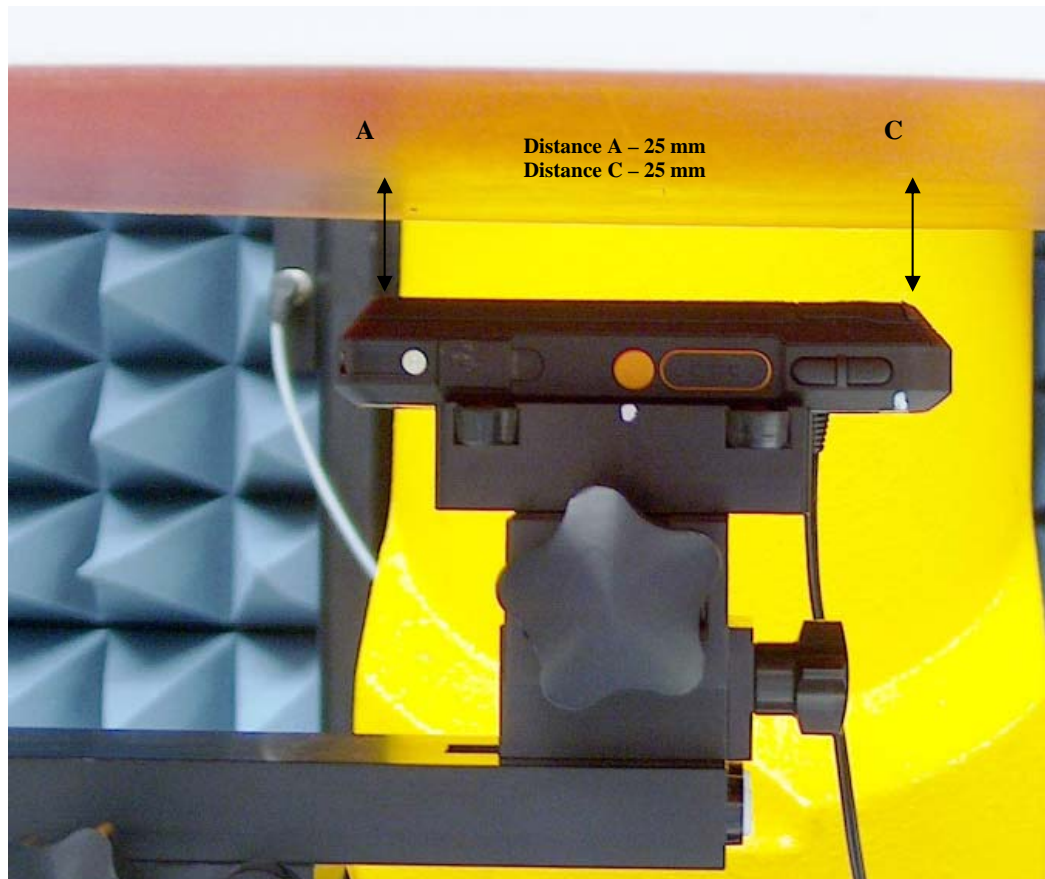
2.4 Front 2.5cm separation

DUT w/ front side separated 2.5cm from phantom using battery SNN5793A w/ audio accessory NNTN5211B attached. Same position used with audio cable NNTN5774C attached.



2.5 Back 2.5cm separation

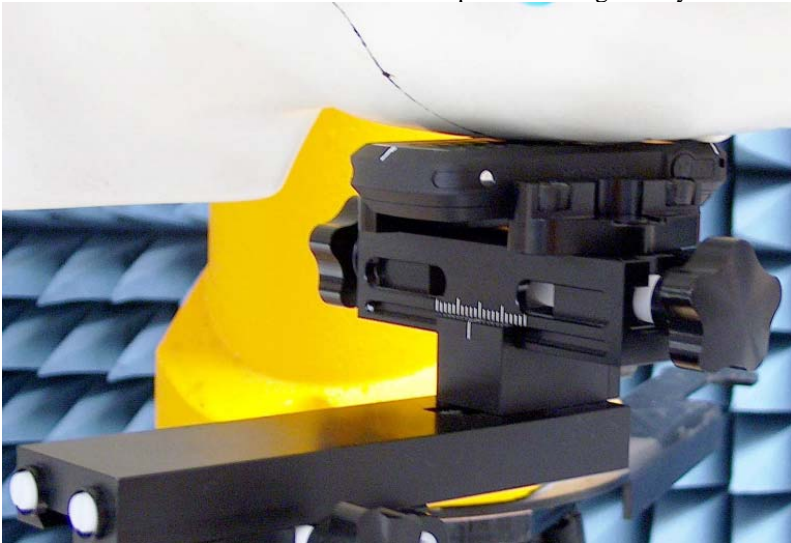
DUT w/ back side separated 2.5cm from phantom using battery SNN5793A w/ audio accessory NNTN5211B attached. Same position used with audio cable NNTN5774C attached.

**2.6 Antenna 2.5cm separation**
Not Applicable**2.7 Public Safety Microphone (PSM)**
Not Applicable**3.0 Other SAR tested position at the face**
Not Applicable

4.0 Other SAR tested positions at the head

4.1 Left ear touch

DUT at the left ear in cheek touch position using battery SNN5793A.



4.2 Left ear tilt

Refer to section 1.3

4.3 Right ear touch

DUT at the right ear in cheek touch position using battery SNN5793A.



4.4 Right ear tilt

DUT at right ear in 15° tilt position using battery SNN5793A.

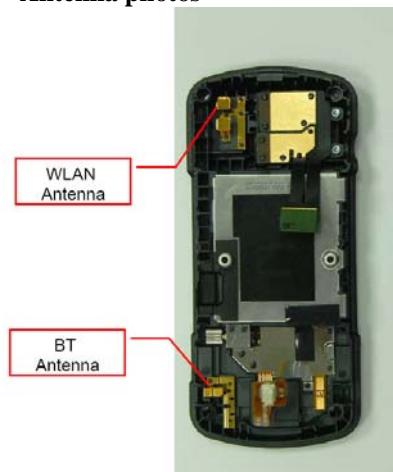
**5.0 Other SAR tested positions at the hand**

- 5.1 Left side**
Not Applicable
- 5.2 Right side**
Not Applicable
- 5.3 Top side**
Not Applicable
- 5.4 Bottom side**
Not Applicable
- 5.5 Back side**
Not Applicable

6.0 DUT and Accessory Photos

The purpose of these photos is to illustrate the offered antenna, battery and body-worn carry accessory(ies). The sample that was used in the following photos represents the product used to obtain the results presented herein.

6.1 Antenna photos



6.2 Battery photos Not Applicable

6.3 Tested body worn accessories



**DUT Back View
Pouch SYN2679A**



**DUT Side View
Pouch SYN2679A**



**DUT Front View
Pouch SYN2679A**



**DUT Back View
Carry Case SYN2685A**



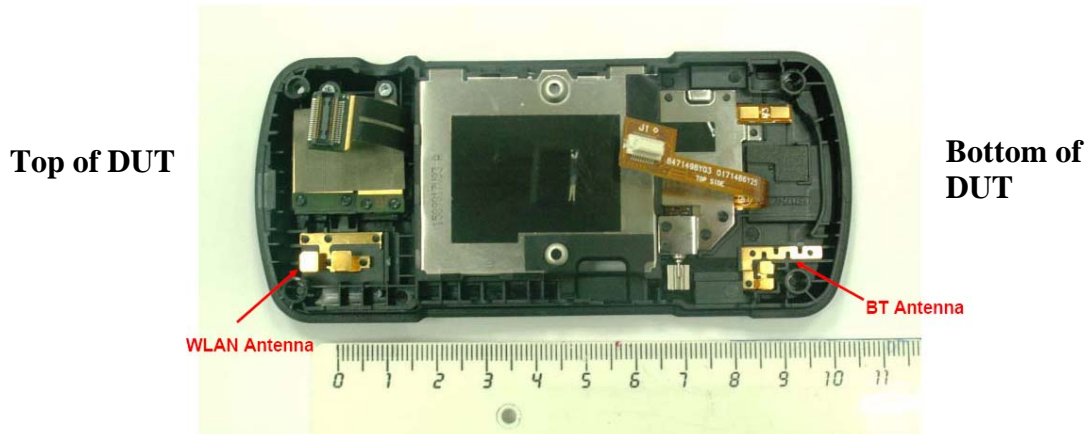
**DUT Side View
Carry Case SYN2685A**



**DUT Front View
Carry Case SYN2685A**

7.0 BT, WLAN 802.11a/b/g and Simultaneous Transmission Considerations – Pursuant to FCC KDB 648474 Practice

7.1 Locations of Antenna



7.2 Operating modes

Device Operating Mode	Remarks
802.11a/b/g	Can operate simultaneously with Bluetooth.
Bluetooth	Can operate simultaneously with 802.11a/b/g.

As noted in part 1 of 3 section 14.0 of this report

Per FCC KDB648474 (v01r05, section 3) BT testing is not required.

- a) BT max power (2.51mW) < 12mW (Pref @ 2.45GHz)
- b) Antenna separation distances are ≥ 2.5 cm. (Refer to Exhibit 7B section 7.0)
- c) Highest SAR from other antenna is 1.00 W/kg and is less than 1.2 W/kg.