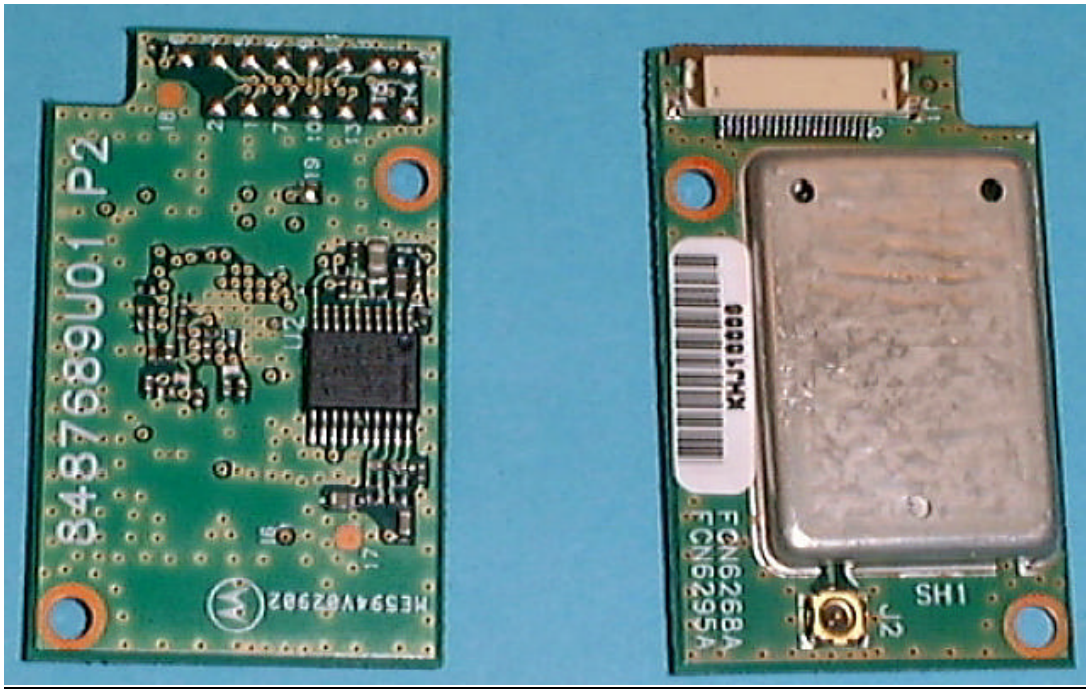


## MW 800 DISPLAY

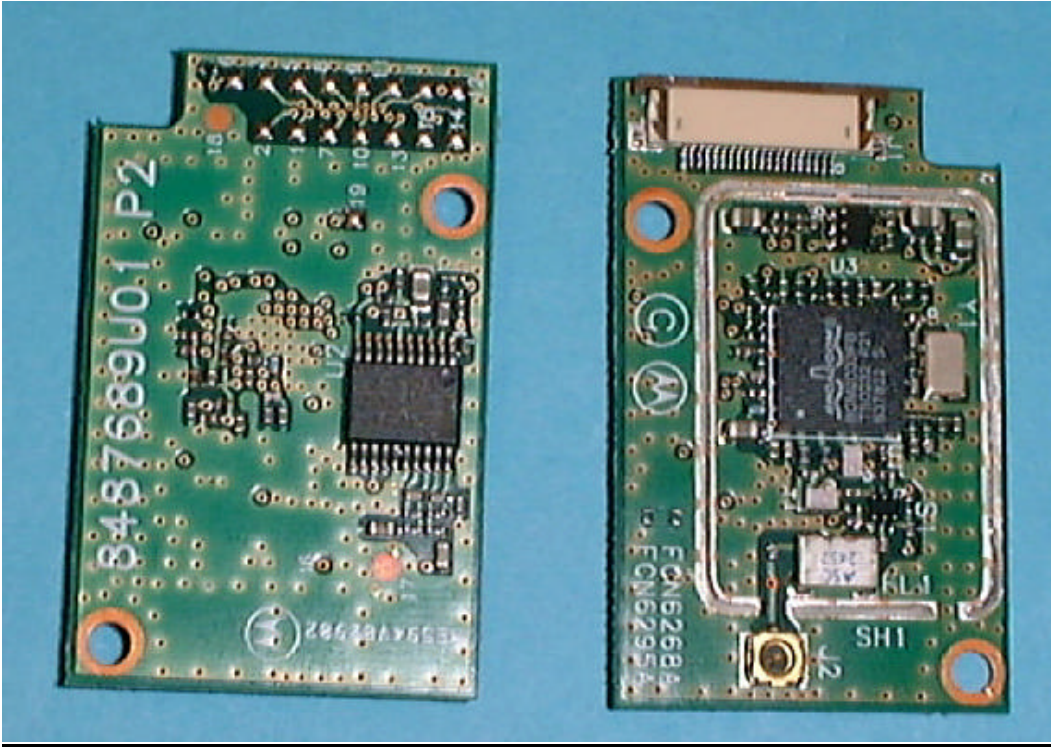
### EXHIBIT 9 INTERNAL PHOTOS

Enlarged view Bluetooth PCB both sides of board with top shield in place.



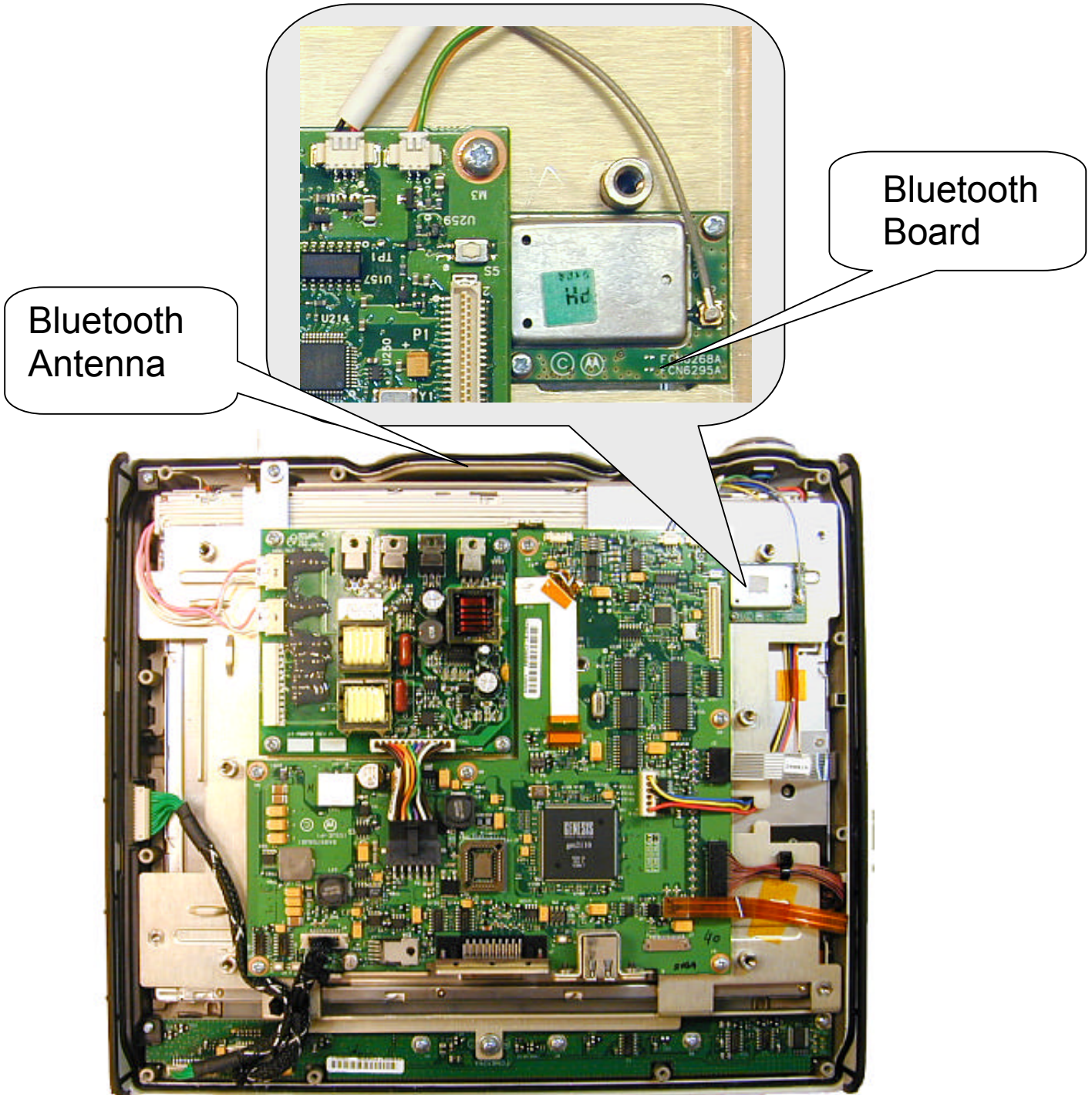
## MW 800 DISPLAY

Enlarged view of the Bluetooth PCB both sides of the board **top shield removed**

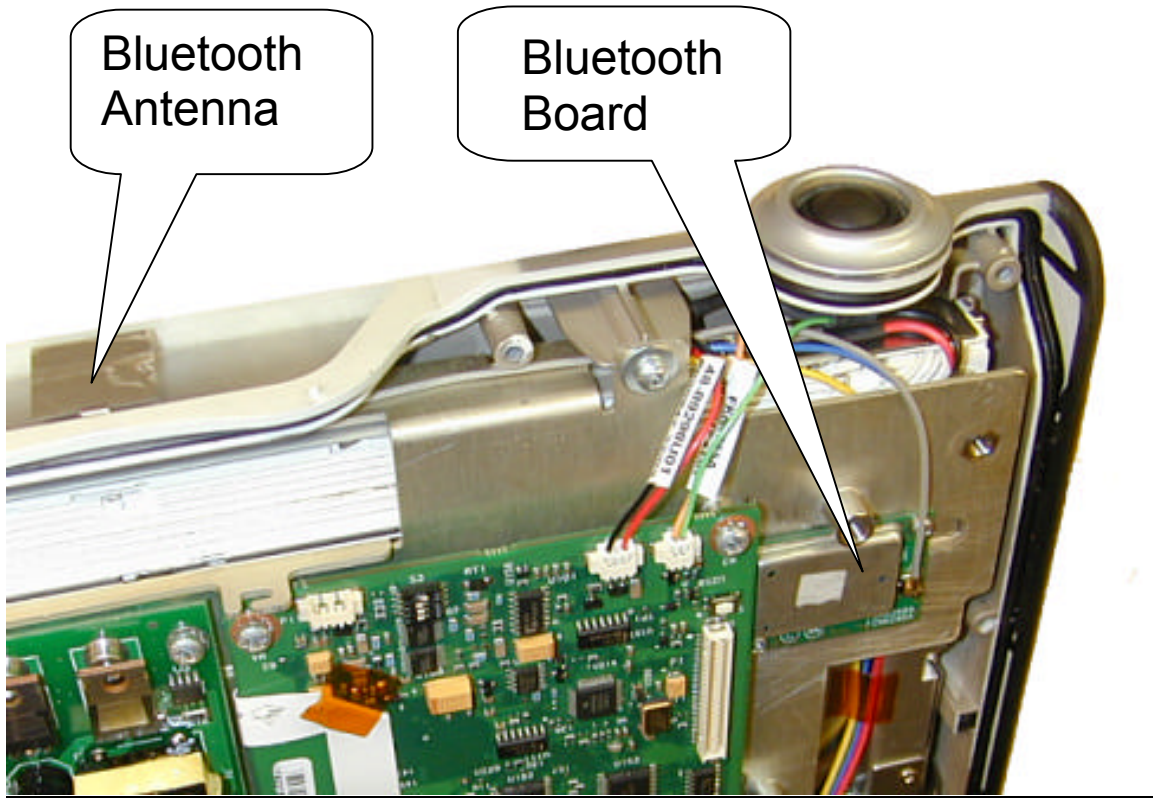


# MW 800 DISPLAY

## Back cover removed Bluetooth PCB location

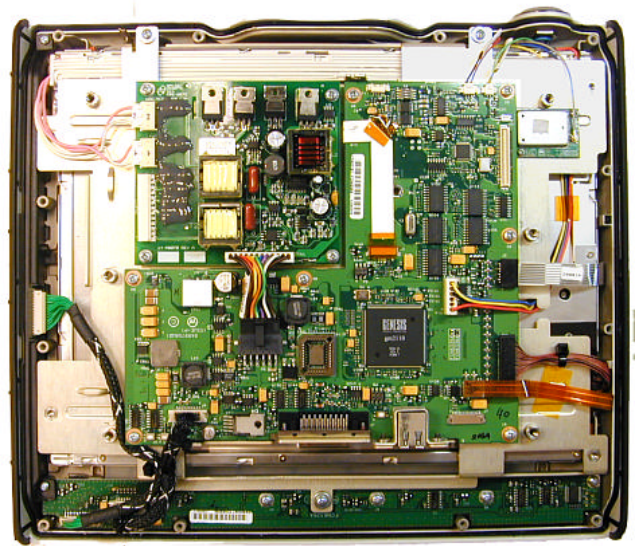
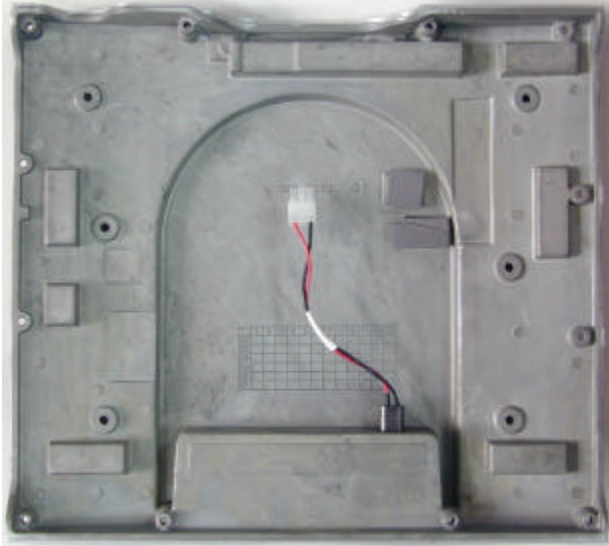


## MW 800 DISPLAY

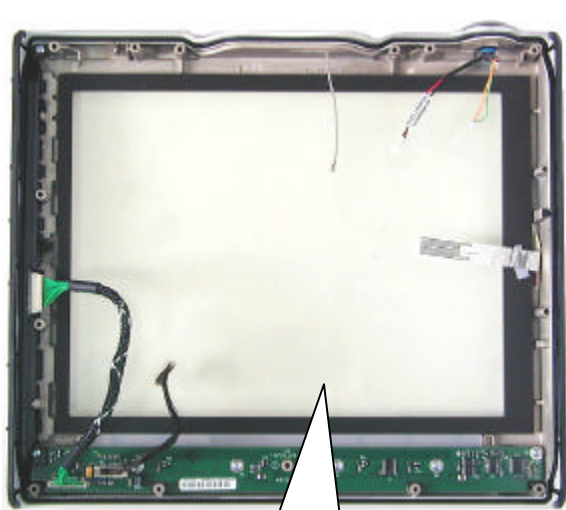


## MW 800 DISPLAY

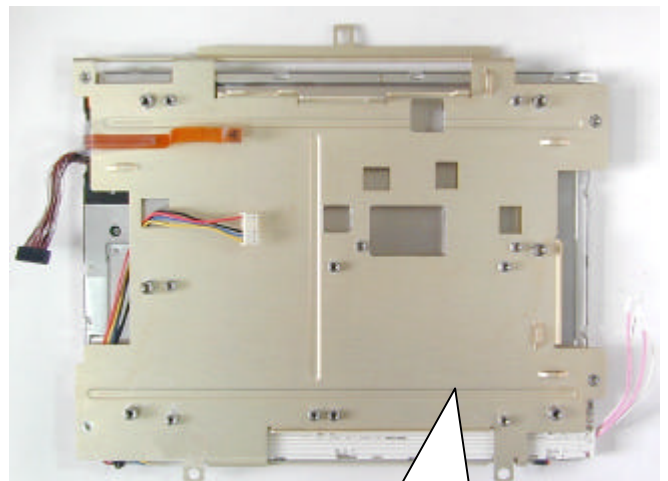
### Rear Cover (left) Main board and inverter board (right)



### Front Cover Screen and Internal Chassis



Front Cover



Internal Chassis and Screen

# MW 800 DISPLAY

