



CERTIFICATE 2518.05

**Exhibit 7B: SAR Test Report Photographs**

**Motorola Solutions Inc**  
**EME Test Laboratory**  
Motorola Solutions Malaysia Sdn Bhd  
Plot 2A, Medan Bayan Lepas  
Mukim 12 SWD 11900 Bayan Lepas Penang, Malaysia.



**Saw Sun Hock (Approval Signatory)**

**Approval Date: : 9/8/2023**

**Report Revision History**

<b>Date</b>	<b>Revision</b>	<b>Comments</b>
09/06/2023	A	Initial release

**1.0 Highest SAR Test Position per body location**

**1.1 Body**

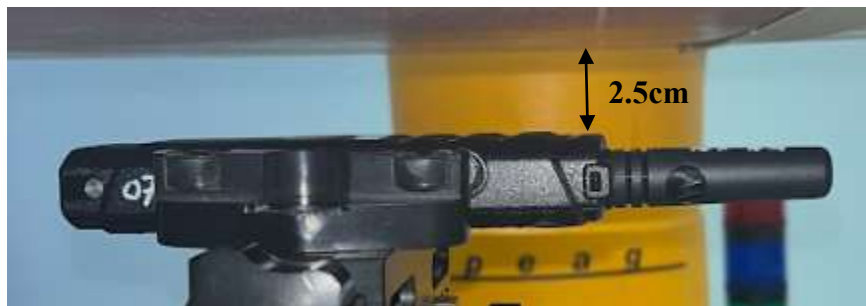
DUT with antenna PMAE4093B, offered battery PMNN4468B and body worn kit PMLN7128A against the phantom with an audio PMMN4125B attached.



Antenna kit #	Separation Distances (mm)		
	@ bottom surface of the DUT	@ antenna's base	@ antenna's tip
PMAE4093B	22	26	28

**1.2 Face**

Front of DUT with antenna PMAE4093B and offered battery PMNN4468B separated 2.5cm from the phantom without an audio accessory attached.



Antenna kit #	Separation Distances (mm)		
	@ bottom surface of the DUT	@ antenna's base	@ antenna's tip
PMAE4093B	28	29	29

**1.3 Head**

Not applicable.

**1.4 Hand**

Not applicable

**2.0 Other SAR tested positions at the body**

**2.1 Body worn**

DUT with antenna PMAE4093B, offered battery PMNN4468B, audio PMMN4125B, and body worn kit PMLN7190A.



Antenna kit #	Separation Distances (mm)		
	@ bottom surface of the DUT	@ antenna's base	@ antenna's tip
PMAE4093B	12	30	34

**3.0 Other SAR tested positions at the head**

**3.1 Left ear touch**  
Not applicable.

**3.2 Left ear tilt**  
Not applicable.

**3.3 Right ear touch**  
Not applicable.

**3.4 Right ear tilt**  
Not applicable.

**4.0 Other SAR tested positions at the hand**

**4.1 Left side**  
Not applicable.

**4.2 Right side**  
Not applicable.

**4.3 Top side**  
Not applicable.

**4.4 Bottom side**  
Not applicable.

**4.5 Back side**  
Not applicable.

**5.0 DUT and Accessory Photos**

The purpose of these photos is to illustrate the tested accessories. Refer to Part 1 of 2, section 7.0 for additional details on the offered accessories.

**5.1 Antenna dimension and photo(s):**

Antenna Kit #	Physical Length (mm)	Electrical Length
PMAE4093A	45	¼ wave
PMAE4094B	45	¼ wave
PMAE4095B	45	¼ wave



**Left to Right: PMAE4095B, PMAE4094B, PMAE4093B**

5.2 Body worn accessories



DUT Side View  
Belt clip  
PMLN7128A



DUT Back View  
Belt clip  
PMLN7128A



DUT Front View  
Swivel Carry Holster  
PMLN7190A



DUT Side View  
Swivel Carry Holster  
PMLN7190A



DUT Back View  
Swivel Carry Holster  
PMLN7190A

**5.3 Battery accessories:**



**Left to Right; Back, front and side views: PMNN4468B**

**5.4 Audio accessories:**



**PMMN4125B**

5.5 DUT Dimensions

	Height (mm)	Width (mm)	Depth (mm)
Radio only (w/o battery)	125.7	55	22
Radio with battery PMNN4468A	125.7	55	22

For illustration purposes only - the following figure reflects the location of the device's dimensions.

