

**EXHIBIT 9**

**Internal Photographs**

(Pursuant to FCC Part 2.1033(b)(7), 2.1033(c)(12) and RSP 100 Annex C)

The following photographs are attached.

Exhibit

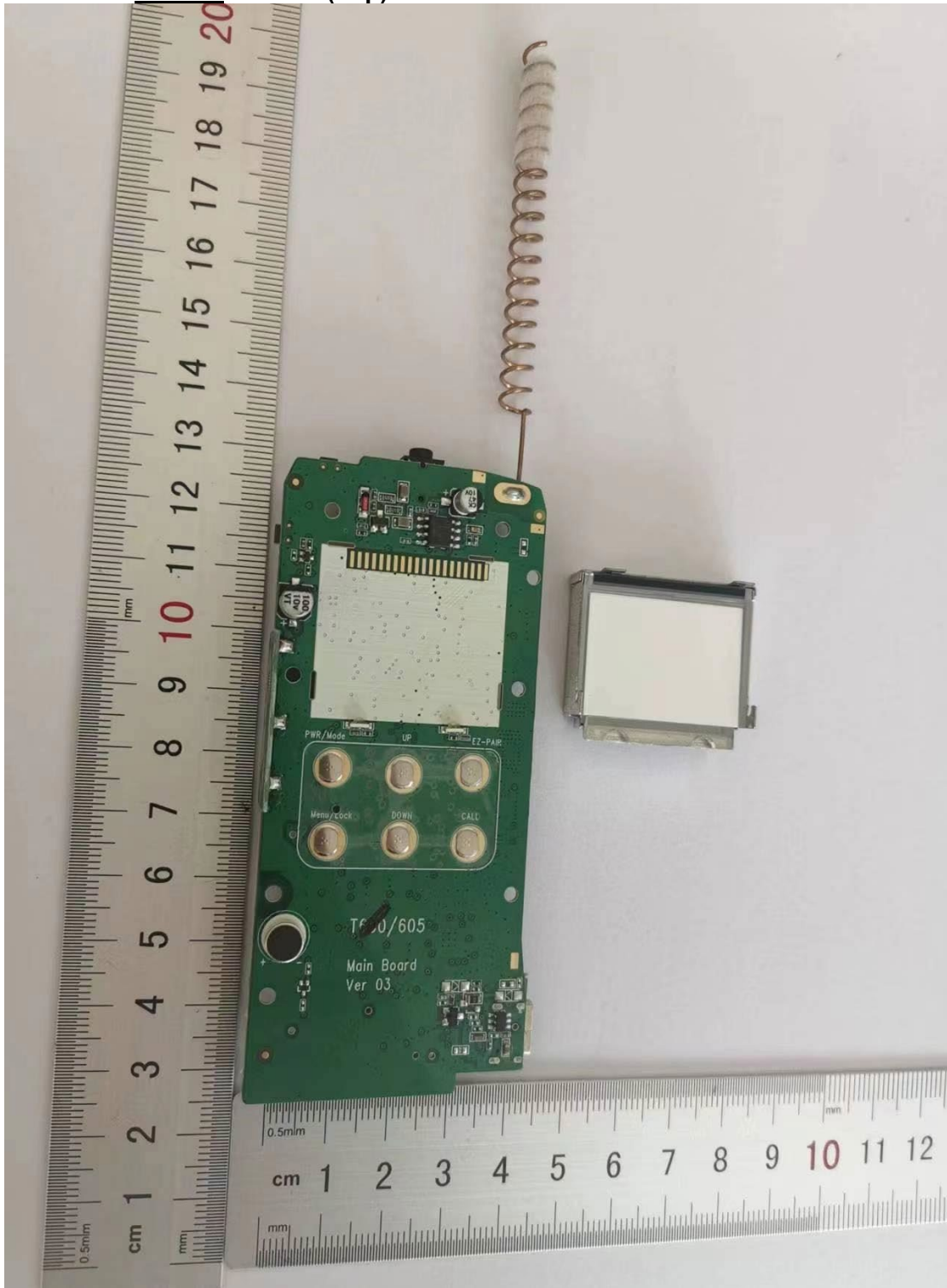
- |    |  |    |
|----|--|----|
| 1. | RF board <u>with</u> Shields (Top)                         | 9A |
| 2. | RF board <u>without</u> Shields (Top)                      | 9B |
| 3. | RF board <u>with</u> Shields (Bottom)                      | 9C |
| 4. | RF board <u>without</u> Shields (Bottom)                   | 9D |
| 5. | RF boards <u>with</u> chassis and housing for (Front Side) | 9E |
| 6. | Chassis and housing (Back Side)                            | 9F |

**EXHIBIT 9A : RF board with Shields (Top)**



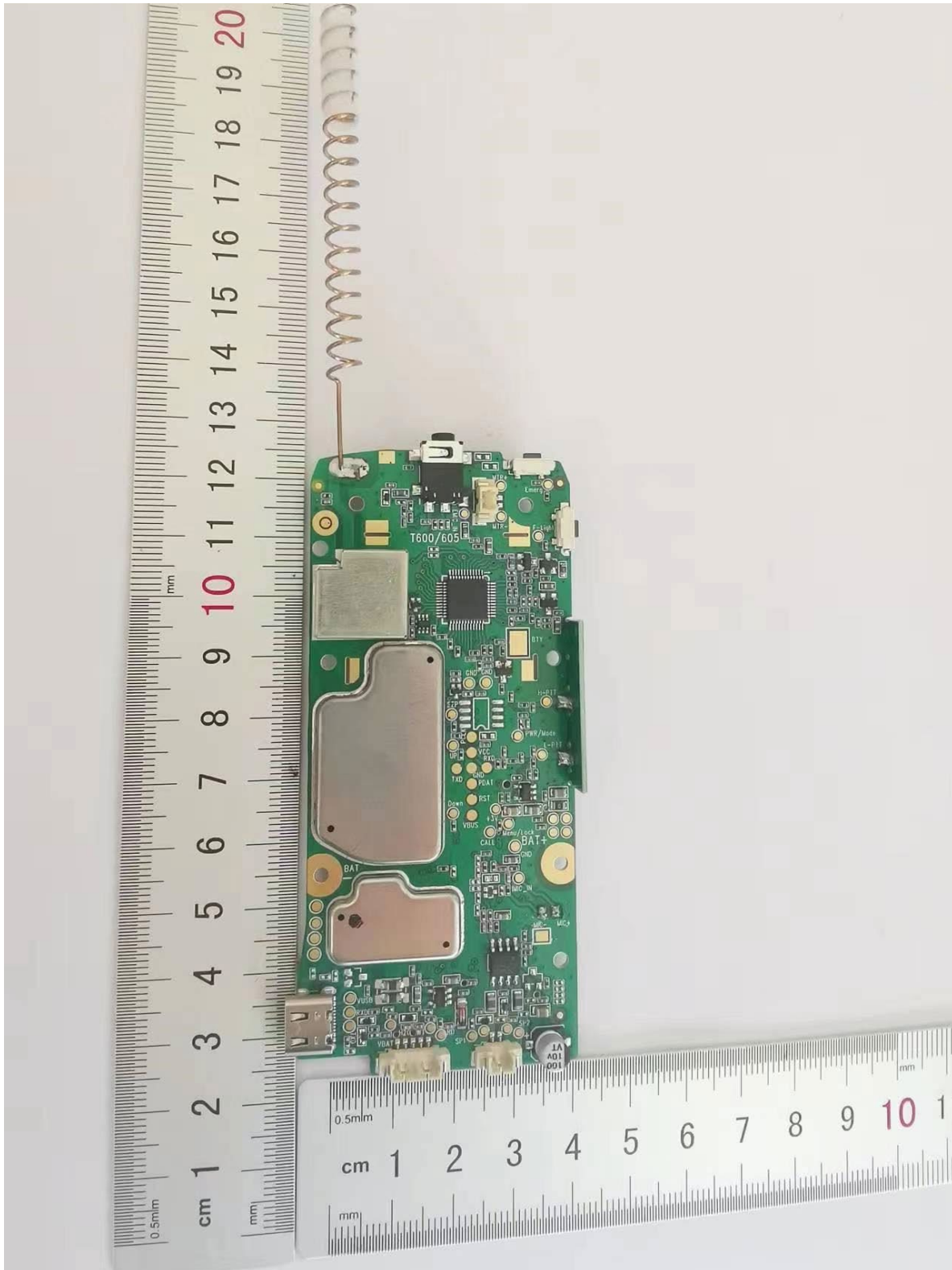
T6B22201GWRAAW (IC MODEL: PMUE5712B) & T6B22201GWCAAG (IC MODEL: PMUE5869A)

**EXHIBIT 9B : RF board without Shields (Top)**



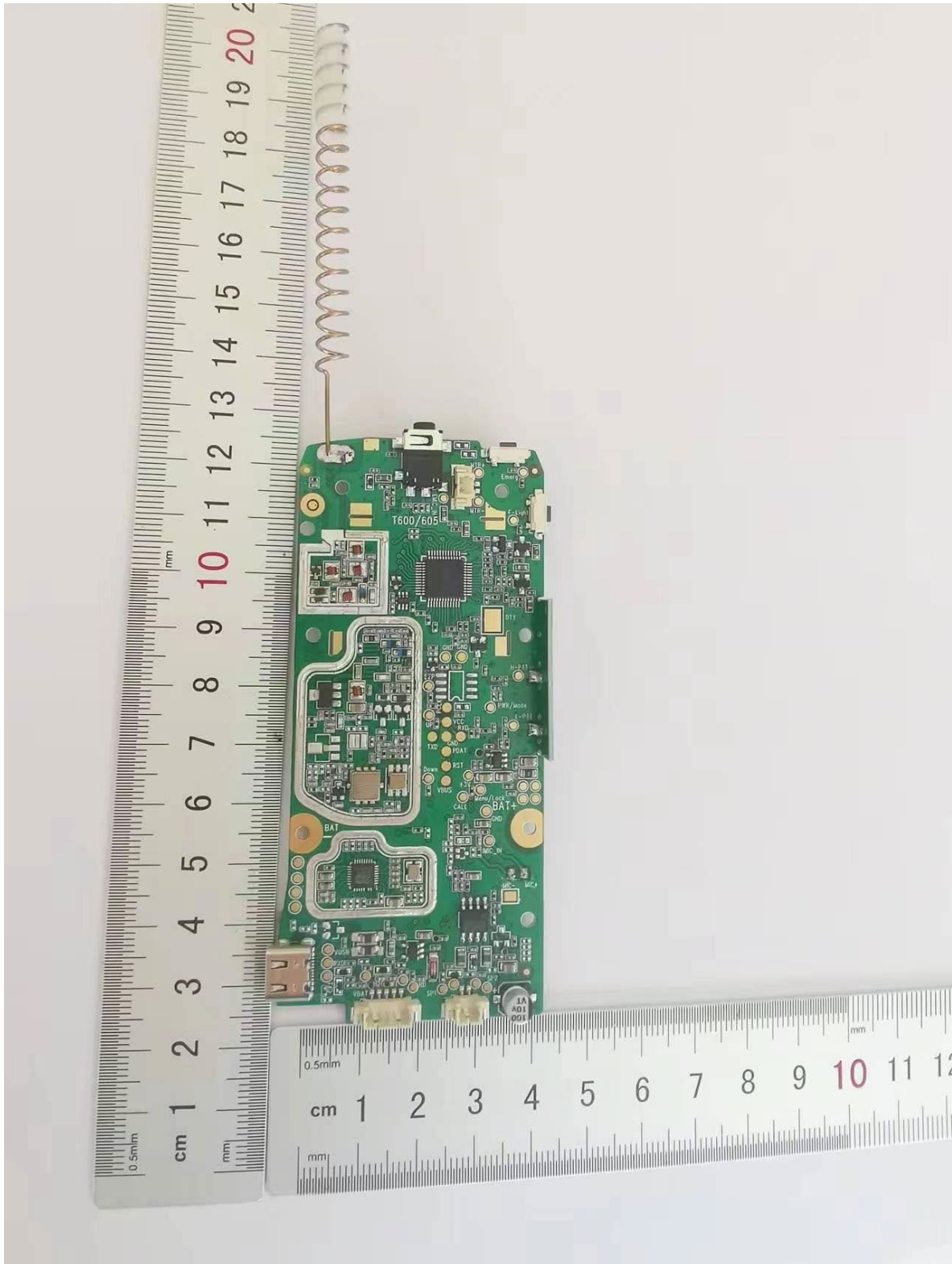
T6B22201GWRAAW (IC MODEL: PMUE5712B) & T6B22201GWCAAG (IC MODEL: PMUE5869A)

**EXHIBIT 9C : RF board with Shields (Bottom)**



T6B22201GWRAAW (IC MODEL: PMUE5712B) & T6B22201GWCAAG (IC MODEL: PMUE5869A)

**EXHIBIT 9D : RF board without Shields (Bottom)**



T6B22201GWRAAW (IC MODEL: PMUE5712B) & T6B22201GWCAAG (IC MODEL: PMUE5869A)



**EXHIBIT 9E : RF boards with chassis and housing for (Front Side)**



T6B22201GWRAAW (IC MODEL: PMUE5712B) & T6B22201GWCAAG (IC MODEL: PMUE5869A)

**EXHIBIT 9F : Chassis and housing (Back Side)**



T6B22201GWRAAW (IC MODEL: PMUE5712B) & T6B22201GWCAAG (IC MODEL: PMUE5869A)

**\*\*\* END \*\*\***