

	 	 
---	--	--

DECLARATION OF COMPLIANCE SAR ASSESSMENT Part 2 of 2

<p style="text-align: center;">Motorola Solutions Inc. EME Test Laboratory Motorola Solutions Malaysia Sdn Bhd Plot 2A, Medan Bayan Lepas, Mukim 12 SWD 11900 Bayan Lepas Penang, Malaysia.</p>	<p>Date of Report: 5/7/2021 Report Revision: A</p>
---	---

<p>Responsible Engineer: Report Author: Date/s Tested: Manufacturer: DUT Description: Test TX mode(s): Max. Power output: Nominal Power: Tx Frequency Bands: Signaling type: Model(s) Tested: Model(s) Certified: Serial Number(s): Classification: Applicant Name: Applicant Address: FCC ID: IC: ISED Test Site registration: FCC Test Firm Registration Number:</p>	<p>Puteri Alifah Ilyana Binti Nor Rahim (EME Engineer) Puteri Alifah Ilyana Binti Nor Rahim (EME Engineer) 4/13/2021-4/14/202, 4/16/202, 4/19/2021, 4/22/2021, 5/7/2021 Motorola Solutions Inc. Handheld Portable – T380 FRS CONSUMER RADIO 462-467MHz Equipment Yellow CW (PTT) 1.4W (462.5500 MHz – 462.7250 MHz) , 0.7W (467.5625MHz - 467.7125 MHz) 1.1W (462.5500 MHz – 462.7250 MHz) , 0.5W (467.5625MHz - 467.7125 MHz) 462.5500 MHz – 462.7250 MHz, 467.5625 MHz - 467.7125 MHz FM T38X (PMUE5740A) T38X (PMUE5740A), T38X (PMUE5737A) 16510XF0135 General Population / Uncontrolled Motorola Solutions Inc. 800 West Sunrise Boulevard, Fort Lauderdale, Florida 33322 AZ489FT4966; 462.5500 MHz – 462.7250 MHz, 467.5625 MHz - 467.7125 MHz 109U-89FT4966; 462.5500 MHz – 462.7250 MHz, 467.5625 MHz - 467.7125 MHz 24843 823256</p>
<p>The test results clearly demonstrate compliance with FCC Occupational/Controlled RF Exposure limits of 8 W/kg averaged over 1 gram per the requirements of FCC 47 CFR § 2.1093 and ISED RSS-102 (Issue 5).</p>	

Based on the information and the testing results provided herein, the undersigned certifies that when used as stated in the operating instructions supplied, said product complies with the national and international reference standards and guidelines listed in section 4.0 of this report (no deviation from standard methods). This report shall not be reproduced without written approval from an officially designated representative of the Motorola Solutions Inc EME Laboratory. I attest to the accuracy of the data and assume full responsibility for the completeness of these measurements. This reporting format is consistent with the suggested guidelines of the TIA TSB-150 December 2004. The results and statements contained in this report pertain only to the device(s) evaluated.

 Sun Hock Saw Approved Signatory Approval Date: 5/7/2021	
---	--

Appendix D

System Verification Check Scans

Motorola Solutions, EME Laboratory

2021-04-13, 08:38

Measurement Report for Device, ,, , CW, Channel 0 (450.0 MHz)

Device Under Test Properties

Model	Serial Number	Dimensions [mm]
Device		50.0 x 10.0 x 8.0

Exposure Conditions

Phantom Section, TSL	Position, Test Distance [mm]	Band	Group, UID	Frequency [MHz], Channel Number	Conversion Factor	TSL Conductivity [S/m]	TSL Permittivity
Flat, HSL	.		, 0--	450.0, 0	11.43	0.84	42.1

Hardware Setup

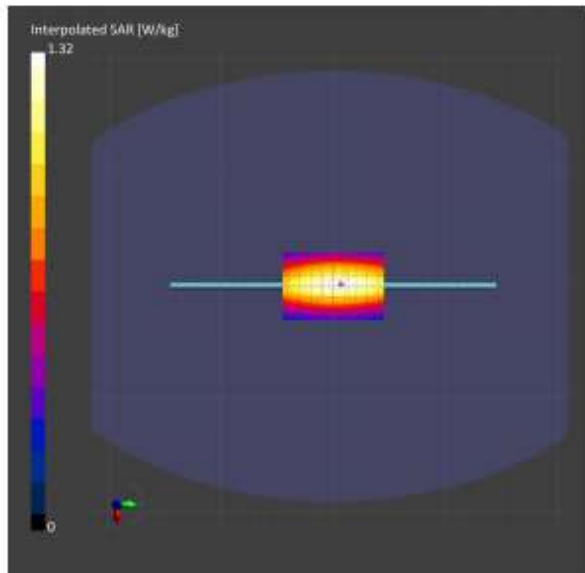
Phantom	TSL, Measured Date	Probe, Calibration Date	DAE, Calibration Date
ELI V4.0 (20deg probe tilt) - 1016	HSL450 , 2021-Apr-13	EX3DV4 - 5N7594, 2020-12-10	DAE4 Sn684, 2020-05-26

Scans Setup

	Area Scan	Zoom Scan
Grid Extents [mm]	60.0 x 90.0	30.0 x 30.0 x 30.0
Grid Steps [mm]	15.0 x 15.0	6.0 x 6.0 x 1.5
Sensor Surface [mm]	3.0	1.4
Graded Grid	No	Yes
Grading Ratio	n/a	1.5
MAIA	N/A	N/A
Surface Detection	VMS + 6p	VMS + 6p
Scan Method	Measured	Measured

Measurement Results

	Area Scan	Zoom Scan
Date	2021-04-13, 08:38	2021-04-13, 08:43
psSAR1g [W/Kg]	1.18	1.19
psSAR10g [W/Kg]	0.817	0.783
Power Drift [dB]	0.01	0.00
TSL Correction	Positive / Negative	Positive / Negative
M2/M1 [%]		81.1
Dist 3dB Peak [mm]		> 15.0



Motorola Solutions, EME Laboratory

2021-04-14, 08:45

System Performance Check Report

Summary

Dipole	Frequency [MHz]	TSL	Power [dBm]	Dev. 1g [%]	Dev. 10g [%]
D450V3 - SN1054	450.0	HSL	23.98	1.0	-0.8

Exposure Conditions

Phantom Section, TSL	Test Distance [mm]	Band	Group, UID	Frequency [MHz], Channel Number	Conversion Factor	TSL Conductivity [S/m]	TSL Permittivity
Flat, HSL	15		, 0--	450.0, 0	11.43	0.85	42.2

Hardware Setup

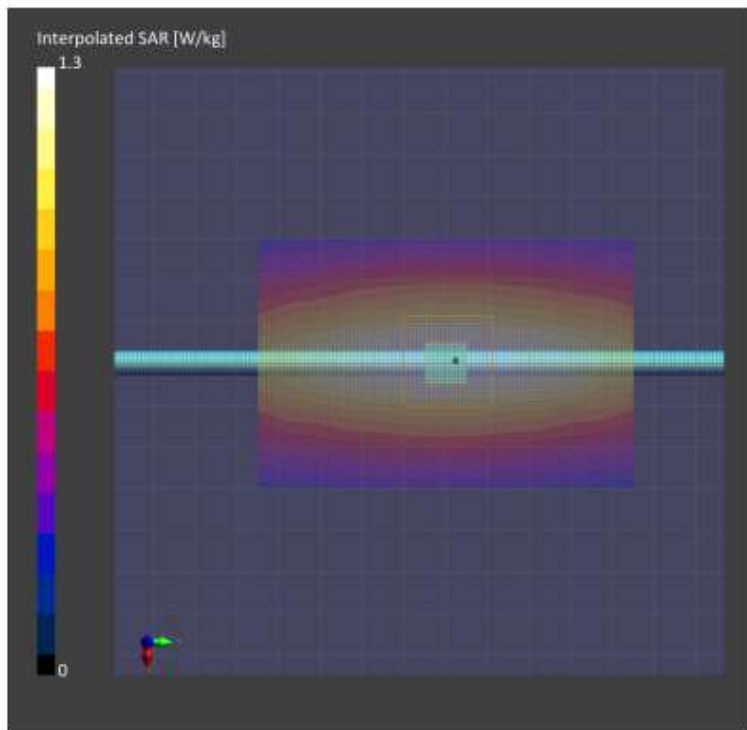
Phantom	TSL, Measured Date	Probe, Calibration Date	DAE, Calibration Date
ELI V4.0 (20deg probe tilt) - 1016	HSL450, 2021-Apr-14	EX3DV4 - SN7594, 2020-12-10	DAE4 Sn684, 2020-05-26

Scans Setup

	Area Scan	Zoom Scan
Grid Extents [mm]	60.0 x 90.0	30.0 x 30.0 x 30.0
Grid Steps [mm]	15.0 x 15.0	6.0 x 6.0 x 1.5
Sensor Surface [mm]	3.0	1.4
Graded Grid	No	Yes
Grading Ratio	n/a	1.5
MAIA	N/A	N/A
Surface Detection	VMS + 6p	VMS + 6p
Scan Method	Measured	Measured

Measurement Results

	Area Scan	Zoom Scan
Date	2021-04-14, 08:45	2021-04-14, 08:50
psSAR1g [W/Kg]	1.16	1.15
psSAR10g [W/Kg]	0.797	0.759
Power Drift [dB]	-0.00	0.01
TSL Correction	Positive only	Positive only



Motorola Solutions, EME Laboratory

2021-04-16, 10:43

Measurement Report for Device, , , CW, Channel 0 (450.0 MHz)

Device Under Test Properties

Model	Serial Number	Dimensions [mm]
Device		50.0 x 10.0 x 8.0

Exposure Conditions

Phantom Section, TSL	Position, Test Distance [mm]	Band	Group, UID	Frequency [MHz], Channel Number	Conversion Factor	TSL Conductivity [S/m]	TSL Permittivity
Flat, HSL	.		. 0--	450.0, 0	11.43	0.83	41.7

Hardware Setup

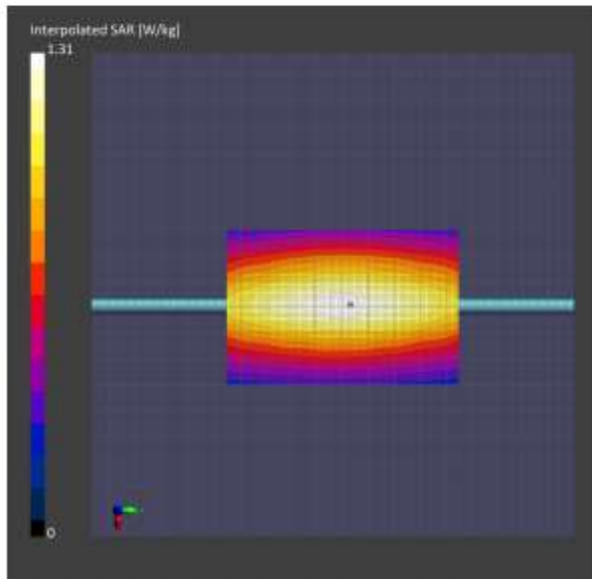
Phantom	TSL, Measured Date	Probe, Calibration Date	DAE, Calibration Date
ELI V4.0 (20deg probe tilt) - 1016	HSL450 , 2021-Apr-16	EX3DV4 - SN7594, 2020-12-10	DAE4 Sn684, 2020-05-26

Scans Setup

	Area Scan	Zoom Scan
Grid Extents [mm]	60.0 x 90.0	30.0 x 30.0 x 30.0
Grid Steps [mm]	15.0 x 15.0	6.0 x 6.0 x 1.5
Sensor Surface [mm]	3.0	1.4
Graded Grid	No	Yes
Grading Ratio	n/a	1.5
MAIA	N/A	N/A
Surface Detection	VMS + 6p	VMS + 6p
Scan Method	Measured	Measured

Measurement Results

	Area Scan	Zoom Scan
Date	2021-04-16, 10:43	2021-04-16, 10:49
psSAR1g [W/Kg]	1.17	1.18
psSAR10g [W/Kg]	0.810	0.779
Power Drift [dB]	0.00	0.00
TSL Correction	Positive only	Positive only
M2/M1 [%]		80.8
Dist 3dB Peak [mm]		> 15.0



Motorola Solutions, EME Laboratory

2021-04-19, 09:00

Measurement Report for Device, , , CW, Channel 0 (450.0 MHz)

Device Under Test Properties

Model	Serial Number	Dimensions [mm]
Device		50.0 x 10.0 x 8.0

Exposure Conditions

Phantom Section, TSL	Position, Test Distance [mm]	Band	Group, UID	Frequency [MHz], Channel Number	Conversion Factor	TSL Conductivity [S/m]	TSL Permittivity
Flat, HSL	.	.	0--	450.0, 0	11.43	0.85	42.0

Hardware Setup

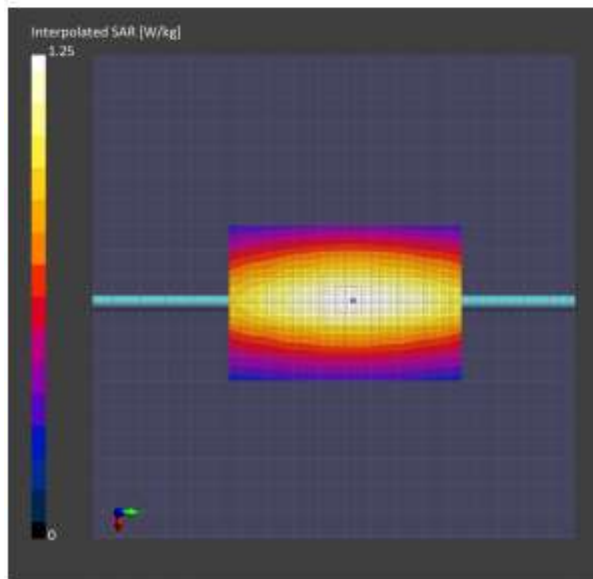
Phantom	TSL, Measured Date	Probe, Calibration Date	DAE, Calibration Date
ELI V4.0 (20deg probe tilt) - 1016	HSL450 , 2021-Apr-19	EX3DV4 - SN7594, 2020-12-10	DAE4 Sn684, 2020-05-26

Scans Setup

	Area Scan	Zoom Scan
Grid Extents [mm]	60.0 x 90.0	30.0 x 30.0 x 30.0
Grid Steps [mm]	15.0 x 15.0	6.0 x 6.0 x 1.5
Sensor Surface [mm]	3.0	1.4
Graded Grid	No	Yes
Grading Ratio	n/a	1.5
MAIA	N/A	N/A
Surface Detection	VMS + 6p	VMS + 6p
Scan Method	Measured	Measured

Measurement Results

	Area Scan	Zoom Scan
Date	2021-04-19, 09:00	2021-04-19, 09:05
psSAR1g [W/Kg]	1.11	1.11
psSAR10g [W/Kg]	0.769	0.733
Power Drift [dB]	-0.02	-0.01
TSL Correction	Positive only	Positive only
M2/M1 [%]		80.5
Dist 3dB Peak [mm]		> 15.0



Motorola Solutions, EME Laboratory

2021-04-22, 22:06

System Performance Check Report

Summary

Dipole	Frequency [MHz]	TSL	Power [dBm]	Dev. 1g [%]	Dev. 10g [%]
D450V3 - SN1053	450.0	HSL	23.98	-4.4	-4.9

Exposure Conditions

Phantom Section, TSL	Test Distance [mm]	Band	Group, UID	Frequency [MHz], Channel Number	Conversion Factor	TSL Conductivity [S/m]	TSL Permittivity
Flat, HSL	15		, 0--	450.0, 0	11.43	0.87	41.8

Hardware Setup

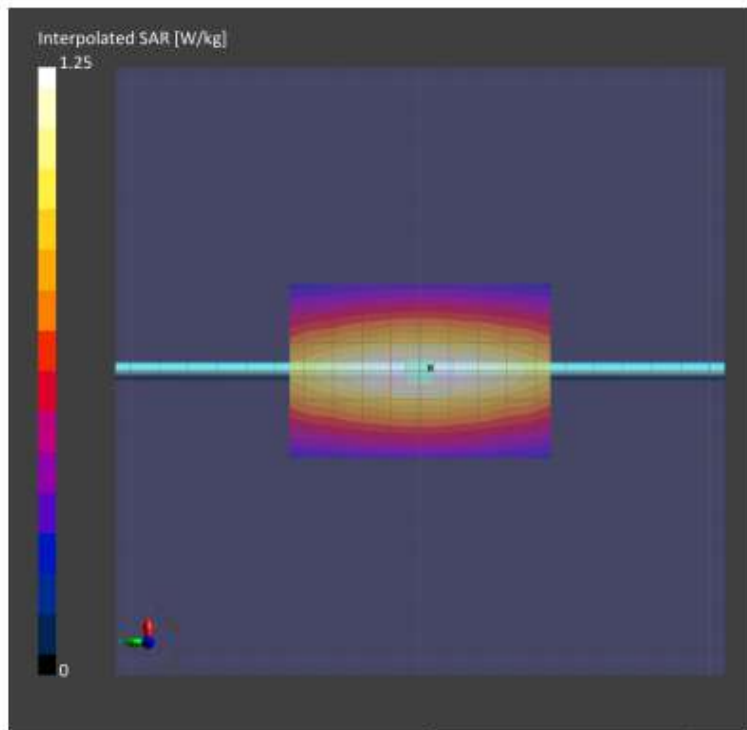
Phantom	TSL, Measured Date	Probe, Calibration Date	DAE, Calibration Date
ELI V4.0 (20deg probe tilt) - 1016	HSL450, 2021-Apr-22	EX3DV4 - SN7594, 2020-12-10	DAE4 Sn684, 2020-05-26

Scans Setup

	Area Scan	Zoom Scan
Grid Extents [mm]	60.0 x 90.0	30.0 x 30.0 x 30.0
Grid Steps [mm]	15.0 x 15.0	6.0 x 6.0 x 1.5
Sensor Surface [mm]	3.0	1.4
Graded Grid	No	Yes
Grading Ratio	n/a	1.5
MAIA	N/A	N/A
Surface Detection	VMS + 6p	VMS + 6p
Scan Method	Measured	Measured

Measurement Results

	Area Scan	Zoom Scan
Date	2021-04-22, 22:06	2021-04-22, 22:11
psSAR1g [W/Kg]	1.09	1.09
psSAR10g [W/Kg]	0.755	0.725
Power Drift [dB]	0.01	-0.00
TSL Correction	Positive / Negative	Positive / Negative



Motorola Solutions, EME Laboratory

2021-05-07, 14:54

System Performance Check Report

Summary

Dipole	Frequency [MHz]	TSL	Power [dBm]	Dev. 1g [K]	Dev. 10g [N]
D450V3 - SN1053	450.0	HSL	23.97	2.0	2.1

Exposure Conditions

Phantom Section, TSL	Test Distance [mm]	Band	Group, UID	Frequency [MHz], Channel Number	Conversion Factor	TSL Conductivity [S/m]	TSL Permittivity
Flat, HSL	15		, 0--	450.0, 0	11.43	0.85	41.8

Hardware Setup

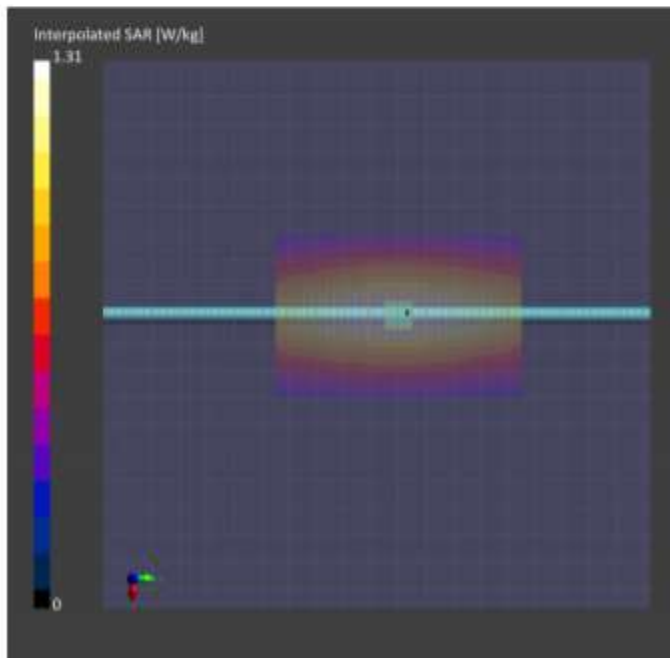
Phantom	TSL, Measured Date	Probe, Calibration Date	DAE, Calibration Date
ELI V4.0 (20deg probe tilt) - 1016	HSL450, 2021-May-07	EX3DV4 - SN7594, 2020-12-10	DAE4 Sn684, 2020-05-26

Scans Setup

	Area Scan	Zoom Scan
Grid Extents [mm]	60.0 x 90.0	30.0 x 30.0 x 30.0
Grid Steps [mm]	15.0 x 15.0	6.0 x 6.0 x 1.5
Sensor Surface [mm]	3.0	1.4
Graded Grid	No	Yes
Grading Ratio	n/a	1.5
MAIA	N/A	N/A
Surface Detection	VMS + 6p	VMS + 6p
Scan Method	Measured	Measured

Measurement Results

	Area Scan	Zoom Scan
Date	2021-05-07, 14:54	2021-05-07, 14:59
psSAR1g [W/Kg]	1.16	1.16
psSAR10g [W/Kg]	0.804	0.777
Power Drift [dB]	0.01	0.01
TSL Correction	Positive only	Positive only



Appendix E

DUT Scans

462.5500 - 462.7250 MHz

Assessments at the Body - Table 18

Motorola Solutions, EME Laboratory

2021-04-13, 11:54

Measurement Report for T380, 16510XF0135, BACK, D450, CW, Channel 63 (463.0 MHz)

Device Under Test Properties

Model	Serial Number	Dimensions [mm]
T380	16510XF0135	130.0 x 45.0 x 20.0

Exposure Conditions

Phantom Section, TSL	Position, Test Distance [mm]	Band	Group, UID	Frequency [MHz], Channel Number	Conversion Factor	TSL Conductivity [S/m]	TSL Permittivity
Flat, HSL	BACK, 25.00	D450	CW, 0--	463.0, 63	11.43	0.85	41.2

Hardware Setup

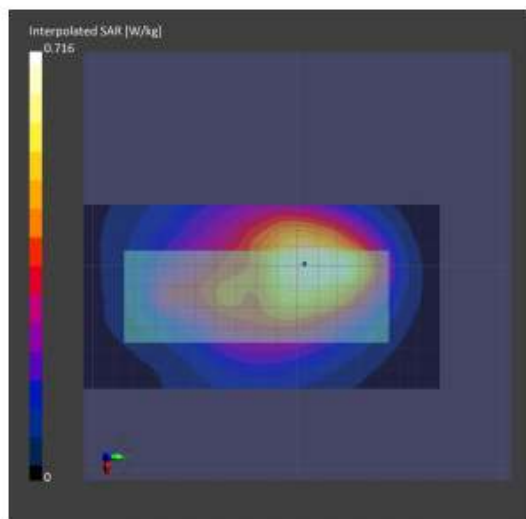
Phantom	TSL, Measured Date	Probe, Calibration Date	DAE, Calibration Date
ELI V4.0 (20deg probe tilt) - 1016	HSL450 , 2021-Mar-10	EX3DV4 - SN7594, 2020-12-10	DAE4 Sn684, 2020-05-26

Scans Setup

	Area Scan	Zoom Scan
Grid Extents [mm]	90.0 x 180.0	30.0 x 30.0 x 30.0
Grid Steps [mm]	15.0 x 15.0	6.0 x 6.0 x 1.5
Sensor Surface [mm]	3.0	1.4
Graded Grid	No	Yes
Grading Ratio	n/a	1.5
MAIA	N/A	N/A
Surface Detection	VMS + 6p	VMS + 6p
Scan Method	Measured	Measured

Measurement Results

	Area Scan	Zoom Scan
Date	2021-04-13, 11:54	2021-04-13, 12:03
psSAR1g [W/Kg]	0.638	0.596
psSAR10g [W/Kg]	0.450	0.402
Power Drift [dB]	-0.07	-0.33
TSL Correction	Positive only	Positive only
M2/M1 [%]		80.7
Dist 3dB Peak [mm]		16.7



Assessments at the Body - Table 19

Motorola Solutions, EME Laboratory

2021-04-19, 09:29

Measurement Report for T380, 16510XF0135, BACK, D450, CW, Channel 63 (463.0 MHz)

Device Under Test Properties

Model	Serial Number	Dimensions [mm]
T380	16510XF0135	130.0 x 45.0 x 20.0

Exposure Conditions

Phantom Section, TSL	Position, Test Distance [mm]	Band	Group, UID	Frequency [MHz], Channel Number	Conversion Factor	TSL Conductivity [S/m]	TSL Permittivity
Flat, HSL	BACK, 0.00	D450	CW, 0---	463.0, 63	11.43	0.86	41.7

Hardware Setup

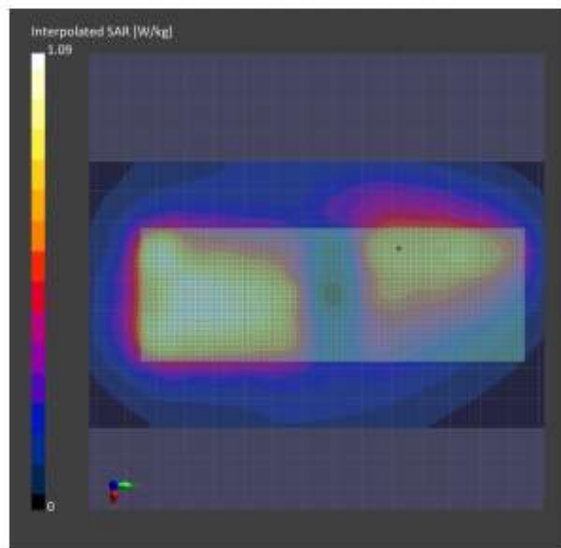
Phantom	TSL, Measured Date	Probe, Calibration Date	DAE, Calibration Date
ELI V4.0 (20deg probe tilt) - 1016	HSL450, 2021-Apr-19	EX3DV4 - SN7594, 2020-12-10	DAE4 Sn684, 2020-05-26

Scans Setup

	Area Scan	Zoom Scan
Grid Extents [mm]	90.0 x 180.0	30.0 x 30.0 x 30.0
Grid Steps [mm]	15.0 x 15.0	4.6 x 4.6 x 1.4
Sensor Surface [mm]	3.0	1.4
Graded Grid	No	Yes
Grading Ratio	n/a	1.4
MAIA	N/A	N/A
Surface Detection	VMS + 6p	VMS + 6p
Scan Method	Measured	Measured

Measurement Results

	Area Scan	Zoom Scan
Date	2021-04-19, 09:29	2021-04-19, 09:41
psSAR1g [W/Kg]	0.962	1.22
psSAR10g [W/Kg]	0.679	0.541
Power Drift [dB]	-0.06	-0.26
TSL Correction	Positive only	Positive only
M2/M1 [%]		36.3
Dist 3dB Peak [mm]		2.9



Assessment at the Body – Table 20

Motorola Solutions, EME Laboratory

2021-04-13, 13:04

Measurement Report for T380, 16510XF0135, BACK, D450, CW, Channel 63 (463.0 MHz)

Device Under Test Properties

Model	Serial Number	Dimensions [mm]
T380	16510XF0135	130.0 x 45.0 x 20.0

Exposure Conditions

Phantom Section, TSL	Position, Test Distance [mm]	Band	Group, UID	Frequency [MHz], Channel Number	Conversion Factor	TSL Conductivity [S/m]	TSL Permittivity
Flat, HSL	BACK, 25.00	D450	CW, 0--	463.0, 63	11.43	0.86	41.8

Hardware Setup

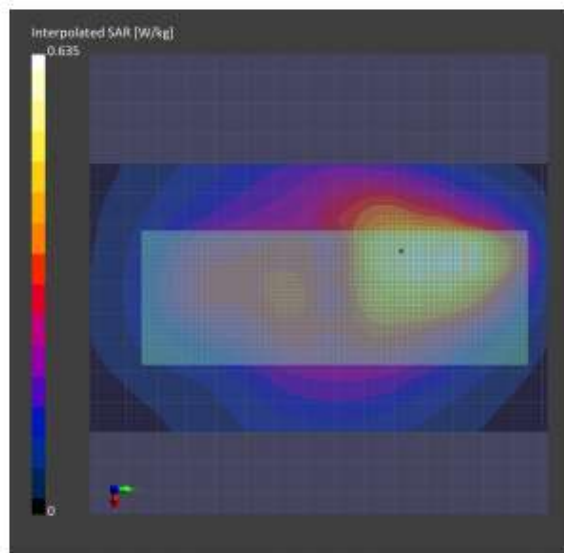
Phantom	TSL, Measured Date	Probe, Calibration Date	DAE, Calibration Date
ELI V4.0 (20deg probe tilt) – 1016	HSL450 , 2021-Mar-10	EX3DV4 – SN7594, 2020-12-10	DAE4 Sn684, 2020-05-26

Scans Setup

	Area Scan	Zoom Scan
Grid Extents [mm]	90.0 x 180.0	30.0 x 30.0 x 30.0
Grid Steps [mm]	15.0 x 15.0	6.0 x 6.0 x 1.5
Sensor Surface [mm]	3.0	1.4
Graded Grid	No	Yes
Grading Ratio	n/a	1.5
MAIA	N/A	N/A
Surface Detection	VMS + 6p	VMS + 6p
Scan Method	Measured	Measured

Measurement Results

	Area Scan	Zoom Scan
Date	2021-04-13, 13:04	2021-04-13, 13:13
psSAR1g [W/Kg]	0.554	0.574
psSAR10g [W/Kg]	0.377	0.350
Power Drift [dB]	-0.14	-0.19
TSL Correction	Positive only	Positive only
M2/M1 [%]		60.8
Dist 3dB Peak [mm]		11.1



Assessments at the Body - Table 21

Motorola Solutions, EME Laboratory

2021-04-16, 14:58

Measurement Report for T380, 16510XF0135, BACK, D450, CW, Channel 63 (463.0 MHz)

Device Under Test Properties

Model	Serial Number	Dimensions [mm]
T380	16510XF0135	130.0 x 45.0 x 20.0

Exposure Conditions

Phantom Section, TSL	Position, Test Distance [mm]	Band	Group, UID	Frequency [MHz], Channel Number	Conversion Factor	TSL Conductivity [S/m]	TSL Permittivity
Flat, HSL	BACK, 0.00	D450	CW, 0--	463.0, 63	11.43	0.85	41.4

Hardware Setup

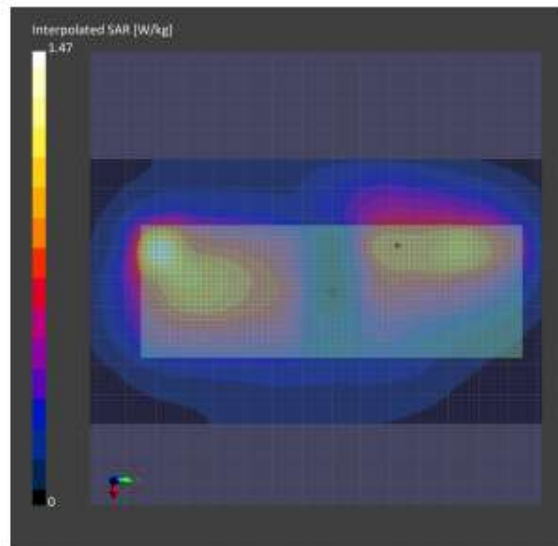
Phantom	TSL, Measured Date	Probe, Calibration Date	DAE, Calibration Date
ELI V4.0 (20deg probe tilt) - 1016	HSL450, 2021-Apr-16	EX3DV4 - 5N7594, 2020-12-10	DAE4 Sn684, 2020-05-26

Scans Setup

	Area Scan	Zoom Scan
Grid Extents [mm]	90.0 x 180.0	30.0 x 30.0 x 30.0
Grid Steps [mm]	15.0 x 15.0	3.0 x 3.0 x 1.2
Sensor Surface [mm]	3.0	1.4
Graded Grid	No	Yes
Grading Ratio	n/a	1.2
MAIA	N/A	N/A
Surface Detection	VMS + 6p	VMS + 6p
Scan Method	Measured	Measured

Measurement Results

	Area Scan	Zoom Scan
Date	2021-04-16, 14:58	2021-04-16, 15:32
psSAR1g [W/Kg]	1.15	1.40
psSAR10g [W/Kg]	0.696	0.542
Power Drift [dB]	0.10	-0.26
TSL Correction	Positive only	Positive only
M2/M1 [%]		37.1
Dist 3dB Peak [mm]		2.5



Assessments at the Body - Table 22

Motorola Solutions, EME Laboratory

2021-04-19, 12:19

Measurement Report for T380, 16510XF0135, BACK, D450, CW, Channel 63 (463.0 MHz)

Device Under Test Properties

Model	Serial Number	Dimensions [mm]
T380	16510XF0135	130.0 x 45.0 x 20.0

Exposure Conditions

Phantom Section, TSL	Position, Test Distance [mm]	Band	Group, UID	Frequency [MHz], Channel Number	Conversion Factor	TSL Conductivity [S/m]	TSL Permittivity
Flat, HSL	BACK, 0.00	D450	CW, 0--	463.0, 63	11.43	0.86	41.7

Hardware Setup

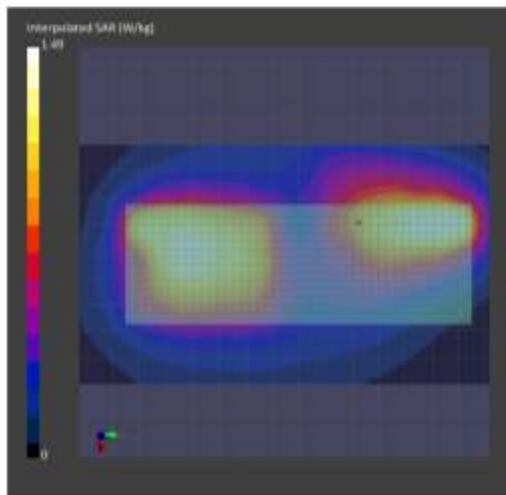
Phantom	TSL, Measured Date	Probe, Calibration Date	DAE, Calibration Date
ELI V4.0 (20deg probe tilt) - 1016	HSL450, 2021-Apr-19	EX3DV4 - SN7594, 2020-12-10	DAE4 Sn684, 2020-05-26

Scans Setup

	Area Scan	Zoom Scan
Grid Extents [mm]	90.0 x 180.0	30.0 x 30.0 x 30.0
Grid Steps [mm]	15.0 x 15.0	6.0 x 6.0 x 1.5
Sensor Surface [mm]	3.0	1.4
Graded Grid	No	Yes
Grading Ratio	N/A	1.5
MAIA	N/A	N/A
Surface Detection	VMS + 6p	VMS + 6p
Scan Method	Measured	Measured

Measurement Results

	Area Scan	Zoom Scan
Date	2021-04-19, 12:19	2021-04-19, 12:27
psSAR1g [W/Kg]	1.30	1.40
psSAR10g [W/Kg]	0.902	0.719
Power Drift [dB]	0.01	-0.31
TSL Correction	Positive only	Positive only
M2/M1 [N]		61.0
Dist 3dB Peak [mm]		10.3



Assessments at the Face - Table 24

Motorola Solutions, EME Laboratory

2021-04-16, 15:45

Measurement Report for T380, 16510XF0135,FRONT, D450, CW, Channel 63 (463.0 MHz)

Device Under Test Properties

Model	Serial Number	Dimensions [mm]
T380	16510XF0135	130.0 x 45.0 x 20.0

Exposure Conditions

Phantom Section, TSL	Position, Test Distance [mm]	Band	Group, UID	Frequency [MHz], Channel Number	Conversion Factor	TSL Conductivity [S/m]	TSL Permittivity
Flat, HSL	FRONT, 25.00	D450	CW, 0--	463.0, 63	11.43	0.85	41.4

Hardware Setup

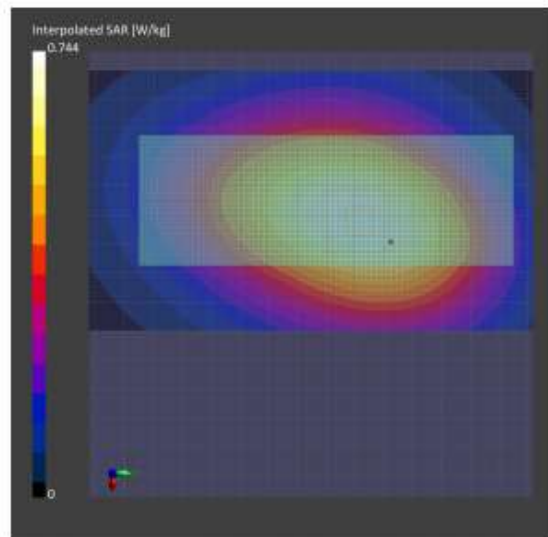
Phantom	TSL, Measured Date	Probe, Calibration Date	DAE, Calibration Date
ELI V4.0 (20deg probe tilt) - 1016	HSL450, 2021-Apr-16	EX3DV4 - SN7594, 2020-12-10	DAE4 Sn684, 2020-05-26

Scans Setup

	Area Scan	Zoom Scan
Grid Extents [mm]	90.0 x 180.0	30.0 x 30.0 x 30.0
Grid Steps [mm]	15.0 x 15.0	6.0 x 6.0 x 1.5
Sensor Surface [mm]	3.0	1.4
Graded Grid	No	Yes
Grading Ratio	n/a	1.5
MAIA	N/A	N/A
Surface Detection	VMS + 6p	VMS + 6p
Scan Method	Measured	Measured

Measurement Results

	Area Scan	Zoom Scan
Date	2021-04-16, 15:45	2021-04-16, 15:52
psSAR1g [W/Kg]	0.673	0.682
psSAR10g [W/Kg]	0.485	0.489
Power Drift [dB]	-0.03	-0.13
TSL Correction	Positive only	Positive only
M2/M1 [%]		83.9
Dist 3dB Peak [mm]		> 15.0



467.5625 - 467.7125 MHz

Assessments at the Body - Table 26

Motorola Solutions, EME Laboratory

2021-04-14, 10:45

Measurement Report for T380, 16510XF0135.BACK, D450, CW, Channel 68 (468.0 MHz)

Device Under Test Properties

Model	Serial Number	Dimensions [mm]
T380	16510XF0135	130.0 x 45.0 x 20.0

Exposure Conditions

Phantom Section, TSL	Position, Test Distance [mm]	Band	Group, UID	Frequency [MHz], Channel Number	Conversion Factor	TSL Conductivity [S/m]	TSL Permittivity
Flat, HSL	BACK, 0.00	D450	CW, 0--	468.0, 68	11.43	0.87	41.8

Hardware Setup

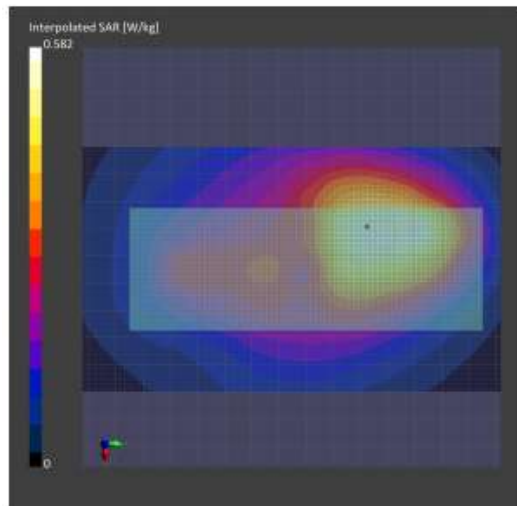
Phantom	TSL, Measured Date	Probe, Calibration Date	DAE, Calibration Date
ELI V4.0 (20deg probe tilt) - 1016	HSL450, 2021-Apr-14	EX3DV4 - 5N7594, 2020-12-10	DAE4 Sn684, 2020-05-26

Scans Setup

	Area Scan	Zoom Scan
Grid Extents [mm]	90.0 x 180.0	30.0 x 30.0 x 30.0
Grid Steps [mm]	15.0 x 15.0	6.0 x 6.0 x 1.5
Sensor Surface [mm]	3.0	1.4
Graded Grid	No	Yes
Grading Ratio	n/a	1.5
MAIA	N/A	N/A
Surface Detection	VMS + 6p	VMS + 6p
Scan Method	Measured	Measured

Measurement Results

	Area Scan	Zoom Scan
Date	2021-04-14, 10:45	2021-04-14, 10:53
psSAR1g [W/Kg]	0.517	0.530
psSAR10g [W/Kg]	0.363	0.343
Power Drift [dB]	-0.05	-0.16
TSL Correction	Positive only	Positive only
M2/M1 [%]		73.6
Dist 3dB Peak [mm]		16.1



Assessments at the Body - Table 27

Motorola Solutions, EME Laboratory

2021-04-22, 23:21

Measurement Report for T380, 16510XF0135, BACK, D450, CW, Channel 68 (468.0 MHz)

Device Under Test Properties

Model	Serial Number	Dimensions [mm]
T380	16510XF0135	130.0 x 45.0 x 20.0

Exposure Conditions

Phantom Section, TSL	Position, Test Distance [mm]	Band	Group, UID	Frequency [MHz], Channel Number	Conversion Factor	TSL Conductivity [S/m]	TSL Permittivity
Flat, HSL	BACK, 0.00	D450	CW, 0--	468.0, 68	11.43	0.88	41.4

Hardware Setup

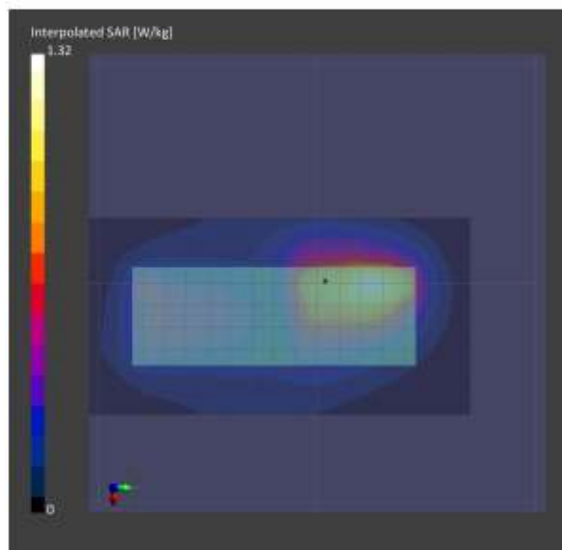
Phantom	TSL, Measured Date	Probe, Calibration Date	DAE, Calibration Date
ELI V4.0 (20deg probe tilt) - 1016	HSL450, 2021-Apr-22	EX3DV4 - SN7594, 2020-12-10	DAE4 Sn684, 2020-05-26

Scans Setup

	Area Scan	Zoom Scan
Grid Extents [mm]	90.0 x 180.0	30.0 x 30.0 x 30.0
Grid Steps [mm]	15.0 x 15.0	6.0 x 6.0 x 1.5
Sensor Surface [mm]	3.0	1.4
Graded Grid	No	Yes
Grading Ratio	n/a	1.5
MAIA	N/A	N/A
Surface Detection	VMS + 6p	VMS + 6p
Scan Method	Measured	Measured

Measurement Results

	Area Scan	Zoom Scan
Date	2021-04-22, 23:21	2021-04-22, 23:28
psSAR1g [W/Kg]	1.12	1.15
psSAR10g [W/Kg]	0.721	0.593
Power Drift [dB]	0.23	-0.11
TSL Correction	Positive only	Positive only
M2/M1 [%]		62.9
Dist 3dB Peak [mm]		10.8



Assessments at the Body - Table 28

Motorola Solutions, EME Laboratory

2021-04-14, 11:51

Measurement Report for T380, 16510XF0135, BACK, D450, CW, Channel 68 (468.0 MHz)

Device Under Test Properties

Model	Serial Number	Dimensions [mm]
T380	16510XF0135	130.0 x 45.0 x 20.0

Exposure Conditions

Phantom Section, TSL	Position, Test Distance [mm]	Band	Group, UID	Frequency [MHz], Channel Number	Conversion Factor	TSL Conductivity [S/m]	TSL Permittivity
Flat, HSL	BACK, 0.00	D450	CW, 0--	468.0, 68	11.43	0.87	41.8

Hardware Setup

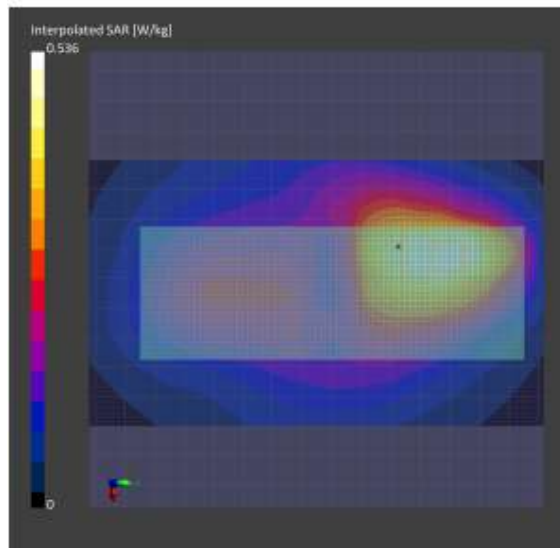
Phantom	TSL, Measured Date	Probe, Calibration Date	DAE, Calibration Date
ELI V4.0 (20deg probe tilt) - 1016	HSL450 , 2021-Apr-14	EX3DV4 - 5N7594, 2020-12-10	DAE4 Sn684, 2020-05-26

Scans Setup

	Area Scan	Zoom Scan
Grid Extents [mm]	90.0 x 180.0	30.0 x 30.0 x 30.0
Grid Steps [mm]	15.0 x 15.0	6.0 x 6.0 x 1.5
Sensor Surface [mm]	3.0	1.4
Graded Grid	No	Yes
Grading Ratio	n/a	1.5
MAIA	N/A	N/A
Surface Detection	VMS + 6p	VMS + 6p
Scan Method	Measured	Measured

Measurement Results

	Area Scan	Zoom Scan
Date	2021-04-14, 11:51	2021-04-14, 11:59
psSAR1g [W/Kg]	0.469	0.466
psSAR10g [W/Kg]	0.319	0.283
Power Drift [dB]	-0.11	-0.19
TSL Correction	Positive only	Positive only
M2/M1 [%]		62.8
Dist 3dB Peak [mm]		11.1



Assessments at the Body - Table 29

Motorola Solutions, EME Laboratory

2021-04-19, 10:06

Measurement Report for T380, 16510XF0135, BACK, D450, CW, Channel 68 (468.0 MHz)

Device Under Test Properties

Model	Serial Number	Dimensions [mm]
T380	16510XF0135	130.0 x 45.0 x 20.0

Exposure Conditions

Phantom Section, TSL	Position, Test Distance [mm]	Band	Group, UID	Frequency [MHz], Channel Number	Conversion Factor	TSL Conductivity [S/m]	TSL Permittivity
Flat, HSL	BACK, 0.00	D450	CW, 0--	468.0, 68	11.43	0.86	41.6

Hardware Setup

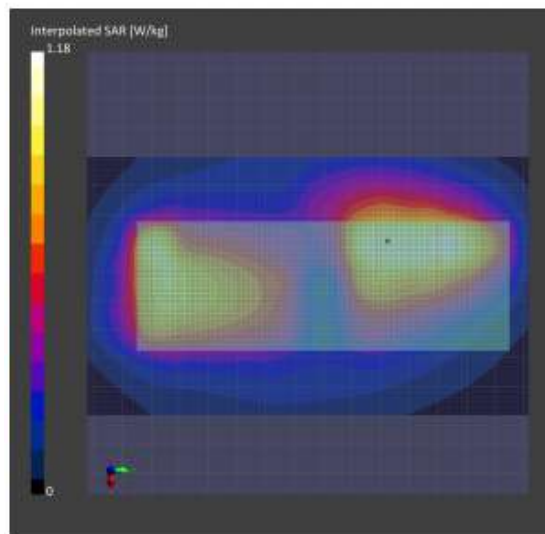
Phantom	TSL, Measured Date	Probe, Calibration Date	DAE, Calibration Date
ELI V4.0 (20deg probe tilt) - 1016	HSL450 , 2021-Apr-19	EX3DV4 - SN7594, 2020-12-10	DAE4 Sn6B4, 2020-05-26

Scans Setup

	Area Scan	Zoom Scan
Grid Extents [mm]	90.0 x 180.0	30.0 x 30.0 x 30.0
Grid Steps [mm]	15.0 x 15.0	6.0 x 6.0 x 1.5
Sensor Surface [mm]	3.0	1.4
Graded Grid	No	Yes
Grading Ratio	n/a	1.5
MAIA	N/A	N/A
Surface Detection	VMS + 6p	VMS + 6p
Scan Method	Measured	Measured

Measurement Results

	Area Scan	Zoom Scan
Date	2021-04-19, 10:06	2021-04-19, 10:16
psSAR1g [W/Kg]	1.00	1.01
psSAR10g [W/Kg]	0.670	0.592
Power Drift [dB]	0.03	0.01
TSL Correction	Positive only	Positive only
M2/M1 [%]		63.4
Dist 3dB Peak [mm]		9.9



Assessments at the Body - Table 30

Motorola Solutions, EME Laboratory

2021-04-14, 13:45

Measurement Report for T380, 16510XF0135, BACK, D450, CW, Channel 68 (468.0 MHz)

Device Under Test Properties

Model	Serial Number	Dimensions [mm]
T380	16510XF0135	140.0 x 45.0 x 20.0

Exposure Conditions

Phantom Section, TSL	Position, Test Distance [mm]	Band	Group, UID	Frequency [MHz], Channel Number	Conversion Factor	TSL Conductivity [S/m]	TSL Permittivity
Flat, HSL	BACK, 0.00	D450	CW, 0--	468.0, 68	11.49	0.07	41.3

Hardware Setup

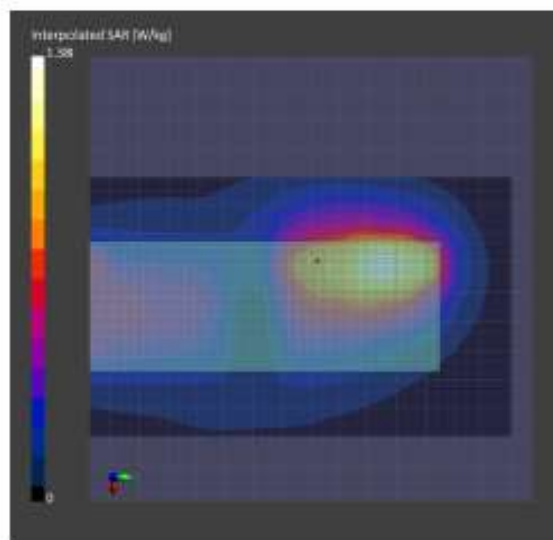
Phantom	TSL, Measured Date	Probe, Calibration Date	DAE, Calibration Date
SLI V4.0 (20deg probe kit) - 1016	HSL450, 2021-Apr-14	EX20V4 - SN7594, 2020-12-10	DAE4 Sn654, 2020-05-26

Scans Setup

	Area Scan	Zoom Scan
Grid Extents [mm]	90.0 x 180.0	90.0 x 90.0 x 90.0
Grid Steps [mm]	15.0 x 15.0	6.0 x 6.0 x 1.5
Sensor Surface [mm]	9.0	1.4
Graded Grid	No	Yes
Grading Ratio	n/a	1.5
MAIA	N/A	N/A
Surface Detection	VMS + 8p	VMS + 8p
Scan Method	Measured	Measured

Measurement Results

	Area Scan	Zoom Scan
Date	2021-04-14, 13:45	2021-04-14, 13:52
psSAR1g [W/Kg]	1.17	1.24
psSAR10g [W/Kg]	0.741	0.627
Power Drift [dB]	-0.05	-0.19
TSL Correction	Positive only	Positive only
MC/M1 [N]		60.5
Dist 2dB Peak [mm]		10.2



Assessments at the Face - Table 32

Motorola Solutions, EME Laboratory

2021-04-16, 16:02

Measurement Report for T380, 16510XF0135, FRONT, D450, CW, Channel 68 (468.0 MHz)

Device Under Test Properties

Model	Serial Number	Dimensions [mm]
T380	16510XF0135	130.0 x 45.0 x 20.0

Exposure Conditions

Phantom Section, TSL	Position, Test Distance [mm]	Band	Group, UID	Frequency [MHz], Channel Number	Conversion Factor	TSL Conductivity [S/m]	TSL Permittivity
Flat, HSL	FRONT, 25.00	D450	CW, 0--	468.0, 68	11.43	0.85	41.3

Hardware Setup

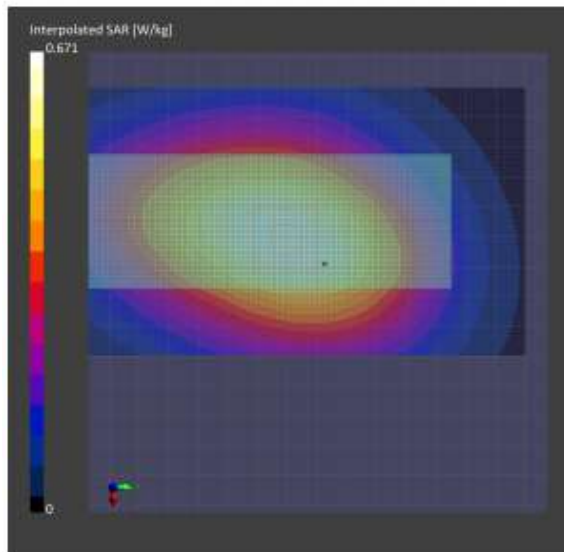
Phantom	TSL, Measured Date	Probe, Calibration Date	DAE, Calibration Date
ELI V4.0 (20deg probe tilt) - 1016	HSL450, 2021-Apr-16	EX3DV4 - SN7594, 2020-12-10	DAE4 Sn684, 2020-05-26

Scans Setup

	Area Scan	Zoom Scan
Grid Extents [mm]	90.0 x 180.0	30.0 x 30.0 x 30.0
Grid Steps [mm]	15.0 x 15.0	6.0 x 6.0 x 1.5
Sensor Surface [mm]	3.0	1.4
Graded Grid	No	Yes
Grading Ratio	n/a	1.5
MAIA	N/A	N/A
Surface Detection	VMS + 6p	VMS + 6p
Scan Method	Measured	Measured

Measurement Results

	Area Scan	Zoom Scan
Date	2021-04-16, 16:02	2021-04-16, 16:08
psSAR1g [W/Kg]	0.604	0.618
psSAR10g [W/Kg]	0.435	0.443
Power Drift [dB]	0.00	-0.10
TSL Correction	Positive only	Positive only
M2/M1 [%]		83.8
Dist 3dB Peak [mm]		> 15.0



APPENDIX F
Shortened Scan of Highest SAR configuration

Motorola Solutions, EME Laboratory

2021-05-07, 22:26

Measurement Report for T380, ,BACK, D450, CW, Channel 68 (468.0 MHz)

Device Under Test Properties

Model	Serial Number	Dimensions [mm]
T380		147.0 x 45.0 x 20.0

Exposure Conditions

Phantom Section, TSL	Position, Test Distance [mm]	Band	Group, UID	Frequency [MHz], Channel Number	Conversion Factor	TSL Conductivity [S/m]	TSL Permittivity
Flat, HSL	BACK, 0.00	D450	CW, 0--	468.0, 68	11.48	0.07	41.4

Hardware Setup

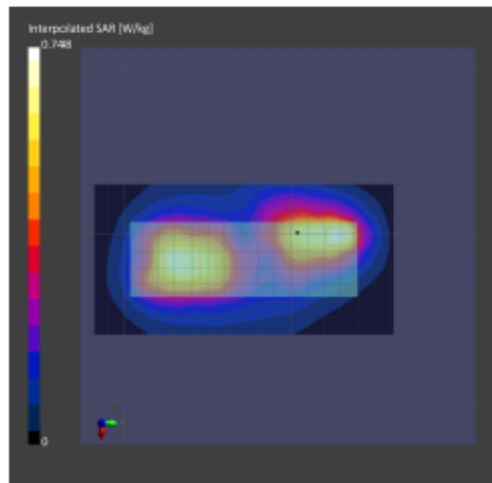
Phantom	TSL, Measured Date	Probe, Calibration Date	DAE, Calibration Date
ELI V4.0 (20deg probe tilt) - 1018	HSL450, 2021-May-07	EX6DV4 - SN7594, 2020-12-10	DAE4 Sn654, 2020-05-26

Scans Setup

	Area Scan	Zoom Scan
Grid Extents [mm]	90.0 x 150.0	90.0 x 90.0 x 90.0
Grid Steps [mm]	15.0 x 15.0	6.0 x 6.0 x 1.5
Sensor Surface [mm]	9.0	1.4
Graded Grid	No	Yes
Grading Ratio	n/a	1.5
MAIA	N/A	N/A
Surface Detection	VMS + 6p	VMS + 6p
Scan Method	Measured	Measured

Measurement Results

	Area Scan	Zoom Scan
Date	2021-05-07, 22:26	2021-05-07, 22:26
psSAR1g [W/Kg]	0.626	1.02
psSAR10g [W/Kg]	0.422	0.569
Power Drift [dB]	-0.02	-0.07
TSL Correction	Positive only	Positive only
M2/M1 [°]		62.2
Dist 2dB Peak [mm]		11.4



Shortened scan reflects highest SAR producing configuration and is compared to the full scan.

Scan Description	Referenced Table	Test Time (min.)	SAR 1g (W/kg)
Shorten scan (zoom)	33	8	0.74
Full scan (area & zoom)	18	25	0.93

APPENDIX G
DUT Test Position Photos

Photos available in Exhibit 7B

APPENDIX H
DUT, Body worn and audio accessories Photos

Photos available in Exhibit 7B