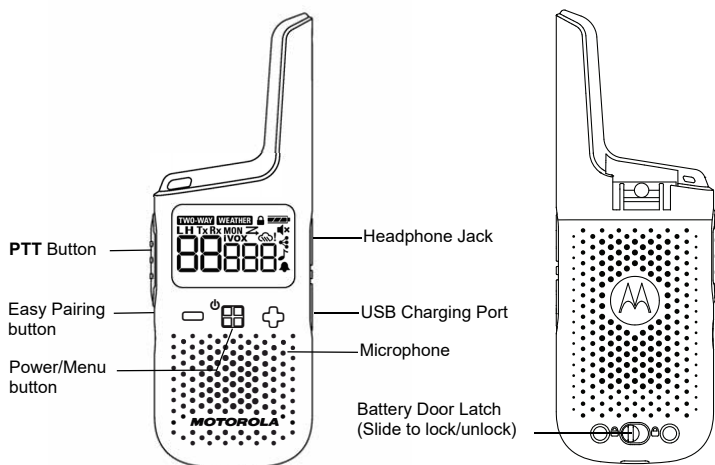
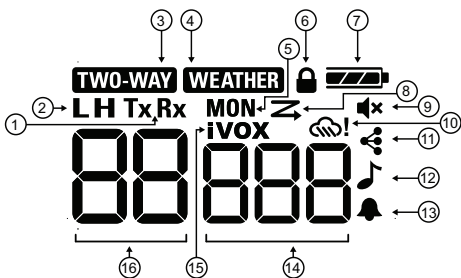


## 1. Getting to Know Your Radio



1. Transmit or Receive
2. High or Low Power
3. Two-Way
4. Weather Radio (HOME)
5. Monitor
6. Lock
7. Battery
8. Scan
9. Mute
10. Weather Alert
11. Easy Pairing
12. Call Tone
13. Roger Tone
14. Code
15. VOX/iVOX
16. Channel



Buttons	Descriptions
Menu/Power	<ul style="list-style-type: none"> <li>Press to enter Menu and scroll through the menu screen.</li> <li>Press and hold for two seconds to turn on or off the radio.</li> </ul>
+ and -	<ul style="list-style-type: none"> <li>Press to adjust the volume level.</li> <li>Press to change the settings or trigger action in the menu screen.</li> </ul>
PTT	<ul style="list-style-type: none"> <li>Press and hold to talk, release to stop transmission.</li> <li>Press to exit menu screen and return to home screen.</li> </ul>
Easy Pairing	Copy channel and code settings from radio A to radio B. <ol style="list-style-type: none"> <li>Radio B—Hold the button until you hear a beep. The radio is ready to be paired. Multiple radios can be paired simultaneously.</li> <li>Radio A—Hold the button until you hear a double beep. The radio broadcasts channel and code settings for other radios to pair.</li> </ol>

### Additional Information

**Internal Voice Operated Transmission (iVOX)/Voice Operated Transmission (VOX)**  
 The microphone detects if you are talking when using VOX/iVOX. If you are talking, the radio triggers transmission automatically.

- When iVOX is displayed, the radio uses the built-in microphone to detect your voice.
- When a VOX headset is connected to the radio, VOX is displayed and the headset microphone is used to detect your voice.

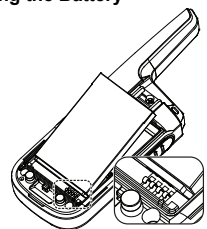
You can turn off or select the following settings to select the sensitivity level.

L3	High Sensitivity for quiet environments. Speaking softly is enough to trigger VOX/iVOX transmission.
L2	Medium Sensitivity for most environments
L1	Low Sensitivity for noisy environments. You must speak up to trigger VOX/iVOX transmission.

Note: Pressing the PTT button cancels the VOX/iVOX transmission.

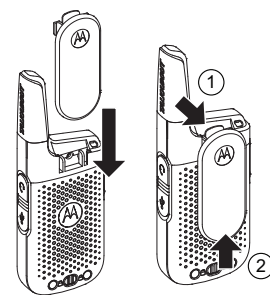
## 2. Setting up Your Radio

### Installing and Charging the Battery

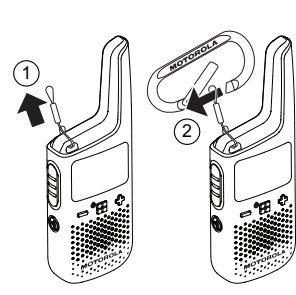


- Observe the polarity before installing the battery.
- Charge the battery using the desktop charger or USB. Charging is completed when the battery icon on the radio stops blinking. Charging takes up to 8 hours.

### Inserting and Removing Belt Clip



### Attaching Carabiner



### Turning your Radio On and Off

To turn the radio on or off, hold the Power/Menu button until the display turns on or off.

### Channel and Codes

- Set your radios with the same channel and code setting to enable communication with other radios.
- The channel setting controls the radio frequency. To avoid jamming, select a channel that is not used by others in your area. See table in Section 3, "Navigating the Menu Pages" for more information on selecting unused channel.
- The code setting on the transmitting and receiving radios need to match, otherwise the receiving radio blocks the received signal. This feature helps you to mute unwanted voices from other radio users transmitting on your channel.
- When code is set to zero, radio does not block any signal and everything that is picked up on the channel is sent to the speaker. Motorola Solutions recommends setting your code to zero when communicating with radio that does not support the code feature. See Section 3, "Navigating the Menu Pages" for detailed instructions on how to change settings.
- Channel and code settings can be copied from one radio to multiple radios simultaneously with a shortcut feature called Easy Pairing. See table in Section 1, "Easy Pairing" for instruction on how to copy channel and code settings.

### Transmission Power

- In some countries different powers are allowed for different channels. The H/L icon indicates if the current channel is a High or Low power channel. Motorola Solutions recommends you to use high power channels for more reliable communications. Select low power channels only when your radios are not far from each other and you want to maximize the battery life.

### Call Tone

When you send a Call Tone, the receiving radio sounds a tone similar to phone ringing tone.

### Scan

Radio scans for voice activity by cycling through the channels. When signals are detected, the signal is sent to the speaker. This feature allows you to find which channel is being used by other groups and have heavy traffic. This helps you to avoid the busy channels when deciding which channel to use for your group.

### Monitor

You can hear everything including noise on your current radio channel. This feature allows you to monitor a channel for weak signals.

### Roger Tone

This feature adds a beep to mark the end of a transmission when you release the PTT button. When the receiver hears the roger tone, it is a confirmation that complete message has been received.

### Weatherproof

This radio is weatherproof to IP54 standards. The radio is resistant to occasional splash of water only when the battery and connector covers are sealed. Do not expose the radio to water for extended period of time. Do not submerge the radio in water.

### Battery Information

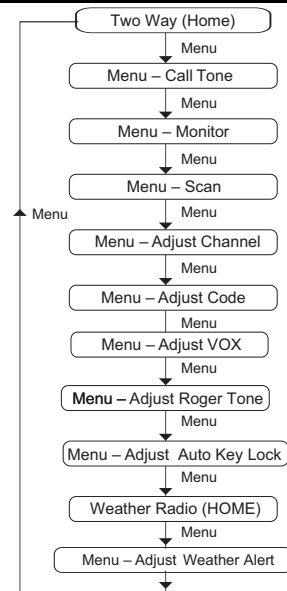
The rated battery life is measured under industrial standard 5-5-90 duty cycle under lab conditions. (5% of the time transmitting, 5% receiving with speaker on, 90% waiting for incoming call.)

**CAUTION:** Risk of explosion if the battery is replaced by an incorrect type.

### Battery Capacity Maintenance

The T38x series radio comes equipped with a rechargeable Li-Ion battery. This battery should be fully charged before initial use to ensure optimum capacity and performance. Battery life is determined by several factors. Among the more critical are the regular overcharge of batteries and the average depth of discharge with each cycle. Typically, the greater the overcharge and the deeper the average discharge, the fewer cycles a battery will last. For example, a battery which is overcharged and discharged 100% several times a day, lasts

## 3. Navigating the Menu Pages



Use the Menu button to scroll through the menu screen. Press PTT to exit any screen and return to home screen.

Menu Screen	Use the + or - button to perform the following actions:
Call Tone 🎵	Start or stop Call Tone transmission.
Monitor MON	Start or stop monitoring the air-wave. You can hear signals transmitted on the channel setting of your radio. If there is no signal, you can hear static.
Scan Z	Start or stop scanning the air-wave. Radio scans all the channels one after another. When a signal is detected, you hear the signal on the speaker and the radio displays the channel of the detected signal.
Adjust VOX VOX/iVOX	To change the Voice Operated Transmission (VOX) setting, select OFF or L1 to L3. L3 being the most sensitive, use it in quiet environments.
Adjust Roger Tone	Enable or disable the roger tone. Roger tone is a beep tone that you hear when PTT is released.
Adjust Channel (Channel number blinks)	Change the radio channel setting.
Adjust Code (Code number blinks)	Change the radio code setting.
Adjust Auto Key Lock	Change the Auto Key Lock setting.
Weather Radio (HOME) WEATHER	When the weather channel display is on (not blinking), use +/- buttons to change speaker volume setting, or you can use the Menu button to make the weather channel blink. When the weather channel blinks, use +/- buttons to change the weather channel setting.
Adjust Weather Alert 📡	Turn weather alert feature on or off.

fewer cycles than a battery that receives less of an overcharge and is discharged to 50% per day. Further, a battery which receives minimal overcharging and averages only 25% discharge, lasts even longer.

### Push-to-Talk Time-out Timer

To avoid air-wave traffic congestion, transmission ends after one minute even if the PTT button is still pressed. To reset the timer, release the PTT button briefly.

### Weather Channel Frequencies

Weather Channel	Frequency (MHz)	Weather Channel	Frequency (MHz)
WX1	162.550	WX7	162.525
WX2	162.400	WX8	161.650
WX3	162.475	WX9	161.775
WX4	162.425	WX10	161.750
WX5	162.450	WX11	162.000
WX6	162.500		

### Weather Receiver

Your radio can tune in to broadcasts by the United States National Oceanic and Atmospheric Administration (NOAA) Weather Radio and Environment and Climate Change Canada (ECCC) Weather Radio. You can listen to a weather channel (see "Weather Channels and Frequencies" table for details) or set your radio to alert you to emergency weather broadcasts that interrupt routine broadcasts.

Both NOAA and ECCC have transmitters located throughout the United States and Canada, respectively. These transmitters broadcast watches, forecasts, and other information 24 hours a day.

## 4. Using Your Radio

Make sure you are in Two Way Radio Mode by looking for the **Two Way** icon on the LCD. You can return to the Two Way mode by pushing the PTT button briefly.

### Talking/Transmitting

- Press and hold the PTT button, then start talking into the microphone.
- Release the PTT button to stop transmission.

Note: Do not press the PTT button when others are talking. When more than one radio transmits on the same channel, the air-wave is jammed and all transmissions are lost.

### Listening/Receiving

- The radio speaker receives signal automatically if radio is set to the same channel and code as the transmitting radio.
- Ensure the speaker volume is set to an appropriate level.

### Adjusting Speaker Volume

- Press + or - from Two Way or Weather Home screens.

### Auto Key Lock

- When Auto Key Lock feature is enabled, the 3 front buttons will be locked after 10 seconds of inactivity.
- To unlock the 3 front buttons, press and hold any of them for 2 seconds.

### Using Headsets

- When a headset is connected to the radio, radio speaker is disabled. You need to wear headset to monitor and receive messages.
- If your headset has PTT button, you can use the button to make a transmission with the microphone on the headset.
- You can still use the PTT button on the radio to make a transmission with the microphone on the radio.

### Listening to Weather Broadcast

Go to the **Weather Radio (HOME)** menu page to listen to Weather Broadcast. When you are in this Menu page, your radio does not receive signal from other two-way radios.

From the **Weather Radio (HOME)** menu page, you can use the + or - button to change speaker volume, or use the Menu button to make the Weather Channel display blink, and then use the + or - button to change the channel.

### Weather Alert

Your radio can be set to respond to NOAA Weather Radio emergency messages. A special alarm tone sounds an alert and turns on the weather receiver to give you immediate weather and emergency information. You can turn this alert on or off in the **Adjust Weather Alert Menu Page**.

Please check with your local weather office for frequency and details or visit [www.weather.gov/nwr](http://www.weather.gov/nwr) in the US to view the appropriate transmitter for your area. As with two-way radio reception, weather channel reception depends on how close you are to a transmitter and whether you are indoors or outdoors. Because weather channels are transmitted without codes, they may contain static or noise. Weather Alert does not function while actively transmitting or receiving in two-way mode.

The use of the NOAA logo does not provide an endorsement or implied endorsement by the National Weather Service of NOAA, nor does the use of the Weather Radio logo provide an endorsement or implied endorsement by Environment and Climate Change Canada (ECCC).

### Channel and Frequencies

Channel	Frequency (MHz)	Power (W)	Channel	Frequency (MHz)	Power (W)
1	462.5625	2.0	12	467.6625	0.5
2	462.5875	2.0	13	467.6875	0.5
3	462.6125	2.0	14	467.7125	0.5
4	462.6375	2.0	15	462.5500	2.0
5	462.6625	2.0	16	462.5750	2.0
6	462.6875	2.0	17	462.6000	2.0
7	462.7125	2.0	18	462.6250	2.0
8	467.5625	0.5	19	467.6500	2.0
9	467.5875	0.5	20	462.6750	2.0
10	467.6125	0.5	21	462.7000	2.0
11	467.6375	0.5	22	462.7250	2.0

Note: Power refers to maximum allowable power as defined by FCC/ISED for each channel under FRS rules for USA and FRS/ISED for each channel under FRS rules for USA and FRS/GMRS for Canada and is not a reflection of the power specification of the radio.



MN007509A01-AA



## Safety and General Information

### Caution

Before using this radio, read this booklet which contains important operating instructions. For information on product details, brochures, user manuals and approved accessories, please refer to [www.motorolasolutions.com](http://www.motorolasolutions.com).

### Compliance with RF Exposure Standards

National and international regulations require manufacturers to comply with the RF energy exposure limits for portable two-way radios before they can be marketed. Your Motorola Solutions two-way radio is designed, manufactured, and tested to comply with all applicable national and international regulations for human exposure to radio frequency electromagnetic energy.

### RF Energy Exposure Awareness and Control Information and Operational Instructions for General Population and Uncontrolled Environment Use

For more information on what RF energy exposure is, see the following websites:

- <https://www.fcc.gov/>
- <http://www.who.int/peh-emf/project/en/>
- <http://www.ic.gc.ca/eic/site/smt-gst.nsf/eng/sf11467.html>
- <http://www.ic.gc.ca/eic/site/smt-gst.nsf/eng/sf01904.html>

For additional information, see [https://www.motorolasolutions.com/en\\_us/about/company-overview/corporate-responsibility/governance-and-policies.html](https://www.motorolasolutions.com/en_us/about/company-overview/corporate-responsibility/governance-and-policies.html).

### Class B Digital Device

For a Class B digital device or peripheral, the instructions furnished the user shall include the following or similar statement, placed in a prominent location in the text of the manual:

Note: This equipment has been tested and found to comply with the limits for a Class B digital device, pursuant to part 15 of the FCC Rules. These limits are designed to provide reasonable protection against harmful interference in a residential installation. This equipment generates, uses and can radiate radio frequency energy and, if not installed and used in accordance with the instructions, may cause harmful interference to radio communications. However, there is no guarantee that interference will not occur in a particular installation. If this equipment does cause harmful interference to radio or television reception, which can be determined by turning the equipment off and on, the user is encouraged to try to correct the interference by one or more of the following measures:

- Reorient or relocate the receiving antenna.
- Increase the separation between the equipment and receiver.
- Connect the equipment into an outlet on a circuit different from that to which the receiver is connected.
- Consult the dealer or an experienced radio/TV technician for help.

### Notice to Users (FCC and Industry Canada)

This device complies with Part 15 of the FCC rules and Industry Canada's license-exempt RSS's per the following conditions:

- This device may not cause harmful interference.
- This device must accept any interference received, including interference that may cause undesired operation.


1

Changes or modifications made to this device, not expressly approved by Motorola Solutions, could void the authority of the user to operate this equipment.

### Mexico and Panama

Mexico and the Republic of Panama do not require authorization to use FRS radio equipment frequencies.

### Supplier's Declaration of Conformity

	<b>Supplier's Declaration of Conformity Per FCC CFR 47 Part 2 Section 2.1077(a)</b>
	Responsible Party Name: Motorola Solutions, Inc. Address: 2000 Progress Pkwy, Schaumburg, IL 60196. Phone Number: 1-800-927-2744 Hereby declares that the product: Model Name: T380 and T383 conforms to the following regulations: FCC Part 15, subpart B, section 15.107(a), 15.107(d), and section 15.109(a).

### Operating Instructions

- Transmit no more than 50% of the time. To transmit (talk), press the **Push-To-Talk (PTT)** button. To receive calls, release the **PTT** button.
- Hold the radio in a vertical position in front of the face with the microphone (and other parts of the radio including the antenna) at least 1 in. (2.5 cm) away from the nose or lips. Antenna should be kept away from the eye.
- When worn on the body, always place the radio in a Motorola Solutions-approved clip, holder, holster, case, or body harness for this product.
- DO NOT hold the antenna when the radio is transmitting.
- DO NOT use any portable radio that has a damaged antenna. If a damaged antenna comes into contact with your skin, a minor burn can result.
- To ensure continued compliance with applicable RF exposure limits, use only Motorola Solutions-approved, supplied or replacement antennas, batteries, and accessories.
- For a list of Motorola Solutions-approved accessories please refer to your user manual or visit [www.motorolasolutions.com](http://www.motorolasolutions.com)

### Acoustic Safety

Exposure to loud noises from any source for extended periods of time may temporarily or permanently affect your hearing. The louder the volume of the radio, the sooner your hearing will be affected. Hearing damage from loud noise is sometimes undetectable at first, and can have a cumulative effect.

To protect your hearing, follow these precautions:

- Use the lowest volume necessary to do your job.
- Turn up the volume only if you are in noisy surroundings.
- Turn down the volume before putting on a headset or headphones.
- Limit the amount of time you use a headset or headphones at high volume.
- When using the radio without a headset or headphones, do not place the speaker of the radio directly against your ear.

2

### What Other Limitations Are There?

Any Implied Warranties, Including Without Limitation

The implied warranties of merchantability and fitness for a particular purpose, shall be limited to the duration of this limited warranty, otherwise the repair, replacement, or refund as provided under this express limited warranty is the exclusive remedy of the consumers, and is provided in lieu of all other warranties, express or implied. In no event shall Motorola Solutions be liable, whether in contract or tort (including negligence) for damages in excess of the purchase price of the product or accessory, or for any indirect, incidental, special or consequential damages of any kind, or loss of revenue or profits, loss of business, loss of information or other financial loss arising out of or in connection with the ability or inability to use the products or accessories to the full extent these damages may be disclaimed by law.

Some states and jurisdictions do not allow the limitation or exclusion of incidental or consequential damages, or limitation on the length of an implied warranty, so the above limitations or exclusions may not apply to you. This warranty gives you specific legal rights, and you may also have other rights that vary from state to state or from one jurisdiction to another.

### USA and Canada

Products Covered	Length Of Coverage
<b>Products and Accessories</b> as defined above, unless otherwise provided for below.	<b>Two (2) years</b> from the date of purchase by the first consumer purchaser of the product unless otherwise provided for below
<b>Products and Accessories</b> that are repaired or replaced.	<b>The balance of the original warranty or for ninety (90) days</b> from the date returned to the consumer, whichever is longer.

6

### Medical Devices

If you use a personal medical device, such as a pacemaker or hearing aid, consult the manufacturer of your device to determine if it is adequately shielded from RF energy. Your physician may be able to assist you in obtaining this information.

### Holsters Incorporating Magnets

Motorola Solutions holsters incorporate strong, neodymium magnets. If you use a personal medical device, such as a pacemaker or hearing aid, consult the manufacturer of your device to determine if it can be used in close proximity to magnets. Your physician may be able to assist you in obtaining this information. Also be aware that magnets can damage other products, including cell phones, computers, hard drives, and other electronic devices, as well as credit cards and magnetic media. Keep the holster away from any mechanical device that could be affected by a magnetic field. Consult the manufacturer of your product to determine if your device or product can be used in close proximity to magnets.

### Safety Instructions for Power Supply

1. The power supply is for use with equipment according to IEC/EN/UL 62368-1/60950-1.
2. The power supply is for indoor use in dry locations.
3. The equipment shall be connected to a nearby and easily accessible socket outlet.
4. If the power supply is damaged or defective, do not repair or use the power supply.
5. For more details, please refer to [https://www.motorolasolutions.com/en\\_xu/support/emea-compliance.html#phnnav\\_other-products](https://www.motorolasolutions.com/en_xu/support/emea-compliance.html#phnnav_other-products).

### Operational Warnings

The following explains the operational warnings:

### For Vehicle With Air Bags



#### Warning:

- Refer to vehicle manufacturer's manual prior to installation of electronic equipment to avoid interference with air bag wiring.
- DO NOT place a portable radio in the area over an air bag or in the air bag deployment area. Air bags inflate with great force. If a portable radio is placed in the air bag deployment area and the air bag inflates, the radio may be propelled with great force and cause serious injury to occupants of the vehicle.

### Blasting Caps and Blasting Areas



**Warning:** To avoid possible interference with blasting operations, turn off your radio when you are near electrical blasting caps, in a blasting area, or in areas posted: "Turn off two-way radio." Obey all signs and instructions.

3

### Exclusions From Warranty Coverage

#### Normal Wear and Tear:

Periodic maintenance, repair and replacement of Products or Accessories due to normal wear and tear.

#### Abuse and Misuse:

Defects or damage that result from: (a) improper operation, storage, misuse or abuse, accident or neglect, such as physical damage (cracks, scratches, etc.) to the surface of the Products and Accessories resulting from misuse; (b) contact with liquid, water, rain, extreme humidity or heavy perspiration, sand, dirt or the like, extreme heat, or food; (c) use of the Products or Accessories for commercial purposes or subjecting the Product or Accessory to abnormal usage or conditions; or (d) other acts which are not the fault of Motorola Solutions.

#### Use of Non-Motorola Solutions branded Products and Accessories:

Defects or damage that result from the use of Non-Motorola Solutions branded or certified products, accessories, software or other peripheral equipment.

#### Unauthorized Service or Modification:

Defects or damages resulting from service, testing, adjustment, installation, maintenance, alteration, or modification in any way by someone other than Motorola Solutions or its authorized service centers.

#### Altered Products:

Products or Accessories with (a) serial numbers or date tags that have been removed, altered or obliterated; (b) broken seals or that show evidence of tampering; (c) mismatched board serial numbers; or (d) nonconforming or non-Motorola Solutions branded housings, or parts.

#### Communication Services:

Defects, damages, or the failure of Products or Accessories due to any communication service or signal you may subscribe to or use with the Products or Accessories.

### HOW TO OBTAIN WARRANTY SERVICE OR OTHER INFORMATION?

To obtain service or information, please call

#### USA and Canada Two-Way Radios

1-800-448-6686.  
[www.motorolasolutions.com/talkabout](http://www.motorolasolutions.com/talkabout)

#### Latin America

Toll Free:  
Mexico 001-855-241-8253  
Panama 001-800-205-3867  
Toll or long distance:  
Spanish +1 630-203-5826  
English +1 630-203-5824

### Potentially Explosive Atmospheres



#### Warning:

- Do not carry a radio that is not certified for Hazardous Locations into a potentially explosive atmosphere. It could result in a serious injury or death. You should only use a radio certified for hazardous locations in potentially explosive atmospheres.
- Explosive atmospheres refer to hazard classified locations that may contain hazardous gas, vapors, dusts, such as fueling areas below decks on boats, fuel, or chemical transferor storage facilities, and areas where the air contains chemicals or particles such as grain, dust, or metal powders. Areas with potentially explosive atmospheres are often, but not always, posted.
- DO NOT remove, install, or charge batteries in such areas, or remove or install antennas. Sparks in a potentially explosive atmosphere can cause an explosion or fire resulting in bodily injury or even death.

### Batteries



**Caution:** Use only Motorola Solutions approved batteries. Risk of explosion if the battery is replaced by an incorrect type.

- Charge your battery using the approved Motorola Solutions charger.
- Connect the charger/power supply to a nearby and easily accessible power outlet.
- Charge only Li-Ion type rechargeable batteries. Other types of batteries may burst, causing personal injury or damage. Turn off radio before charging.
- Use the battery in accordance with its water and/or dust Ingress Protection (IP) rating.
- Do not discard your battery into a fire.
- Do not replace the battery in any area labeled "Hazardous Atmosphere".
- Do not disassemble, crush, puncture, shred, or otherwise attempt to change the form of your battery.
- Do not dry a wet or damp battery with an appliance or heat source, such as a hair dryer or microwave oven.
- Do not allow conductive material such as jewelry, keys, or beaded chains to touch exposed battery terminals.
- Do not dispose of batteries with household waste.

### Do Not Substitute Options or Accessories

The Motorola Solutions communications equipment certified as intrinsically safe by the approving agency (FM, UL, CSA, CENELEC) is tested as a complete system which consists of the listed agency approved portable, approved battery, and approved accessories or options, or both. This approved portable and battery combination must be strictly observed. There must be no substitution of items, even if the substitute has been previously approved with a different Motorola Solutions communications equipment unit. Approved configurations are listed by the approving agency (FM, UL, CSA, CENELEC).

4

The Intrinsically Safe Approval Label affixed to radio refers to the intrinsically safe classification of that radio product, and the approved batteries that can be used with that system.

The manual PN referenced on the Intrinsically Safe Approval Label identifies the approved accessories and or options that can be used with that portable radio unit.

Using a non-Motorola Solutions-intrinsically safe battery and/or accessory with the Motorola Solutions-approved radio unit will void the intrinsically safe approval of that radio unit.

### European Union (EU) Waste of Electrical and Electronic Equipment (WEEE) Directive



The European Union's WEEE directive requires that products sold into EU countries must have the crossed out trash bin label on the product (or the package in some cases). As defined by the WEEE directive, this cross-out trash bin label means that customers and end-users in EU countries should not dispose of electronic and electrical equipment or accessories in household waste. Customers or end-users in EU countries should contact their local equipment supplier representative or service center for information about the waste collection system in their country.

## Licensing Information

## Warranty

### Consumer Two-Way Radio Products and Accessories purchased in the United States and Canada

#### What Does this Warranty Cover?

Subject to the exclusions contained below, Motorola Solutions, Inc. ("Motorola") warrants the Motorola Solutions branded consumer two-way radios that operate via Family Radio Service or General Mobile Radio Service ("Products"), the Motorola Solutions branded or certified accessories sold for use with these Products ("Accessories") to be free from defects in materials and workmanship under normal consumer usage for the period(s) outlined below. This limited warranty is the exclusive remedy of a consumer, and applies as follows to new Products and Accessories and purchased by consumers in USA and Canada, which are accompanied by this written warranty:

#### Who is Covered?

This warranty extends only to the first consumer purchaser, and is not transferable.

#### What will MOTOROLA SOLUTIONS, INC. do?

Motorola Solutions, Inc., at its option, will at no charge repair, replace or refund the purchase price of any Products or Accessories that do not conform to this warranty. We may use functionally equivalent reconditioned/refurbished/pre-owned or new Products or Accessories.

5

### For Accessories:

Please call the telephone number designated above for the Product with which they are used.

You will receive instructions on how to ship the Products or Accessories at your expense, to Motorola Solutions or a Motorola Solutions Authorized Repair Center. To obtain service, you must include: (a) a copy of your receipt, bill of sale or other comparable proof of purchase; (b) a written description of the problem; (c) the name of your service provider, if applicable; (d) the name and location of the installation facility (if applicable) and, most importantly; (e) your address and telephone number.

### For more information, please visit us at:



<https://www.facebook.com/MotorolaTalkaboutWalkieTalkies>

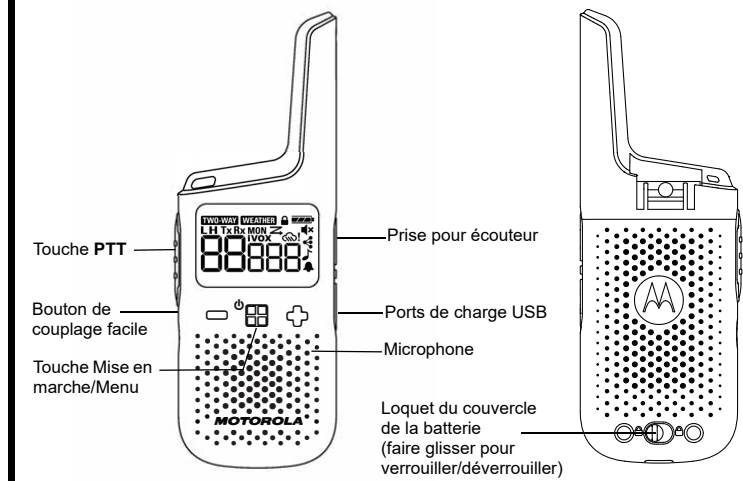


<http://bit.ly/Talkabout>

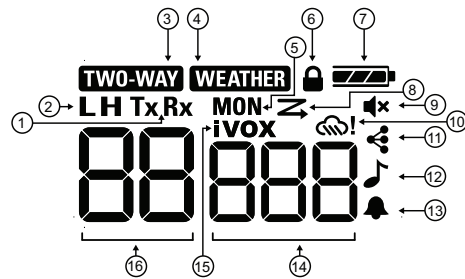
7

8

## 1. Faire connaissance avec votre radio



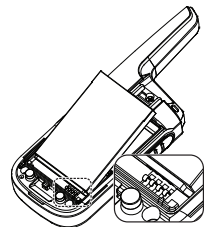
- Émission ou réception
- Puissance élevée ou faible
- Bidirectionnel
- Radio-Météo (ACCUEIL)
- Moniteur
- Verrouillage
- Batterie
- Balayer
- Muet
- Alerte météo
- Couplage facile
- Tonalité d'appel
- Tonalité de confirmation
- Code
- VOX/iVOX
- Canal



Touches	Description
Menu/Mise en marche	<ul style="list-style-type: none"> <li>Appuyez sur cette touche pour accéder au menu et faire défiler l'écran du menu.</li> <li>Maintenez cette touche enfoncée pendant deux secondes pour allumer ou éteindre la radio.</li> </ul>
+ et -	<ul style="list-style-type: none"> <li>Appuyez sur cette touche pour régler le niveau du volume.</li> <li>Appuyez sur cette touche pour modifier les paramètres ou déclencher une action dans l'écran du menu.</li> </ul>
PTT	<ul style="list-style-type: none"> <li>Maintenez cette touche enfoncée pour parler, relâchez-la pour cesser d'émettre.</li> <li>Appuyez sur cette touche pour quitter l'écran du menu et revenir à l'écran d'accueil.</li> </ul>
Couplage facile	<p>Copiez les paramètres de canal et de code de la radio A à la radio B.</p> <ol style="list-style-type: none"> <li>Radio B – maintenez la touche enfoncée jusqu'à ce que vous entendiez un bip. La radio est prête à être couplée. Plusieurs radios peuvent être couplées simultanément.</li> <li>Radio A – maintenez la touche enfoncée jusqu'à ce que vous entendiez un bip. La radio diffuse les paramètres de canal et de code pour permettre le couplage des autres radios.</li> </ol>

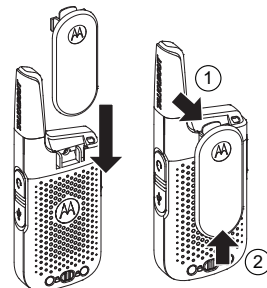
## 2. Configuration de votre radio

### Installation et charge de la batterie

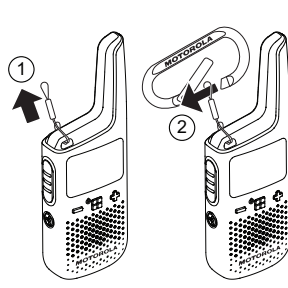


- Observez la polarité avant d'installer la batterie.
- Chargez la batterie à l'aide du chargeur de bureau ou du port USB. La charge est terminée lorsque l'icône de batterie de la radio cesse de clignoter. La charge prend jusqu'à 8 heures.

### Insertion et retrait de la pince de ceinture



### Fixation du mousqueton



### Mise sous tension et hors tension de la radio

Pour allumer ou éteindre la radio, maintenez la touche Mise en marche/Menu enfoncée jusqu'à ce que l'écran s'allume ou s'éteigne.

### Canal et codes

- Configurez vos radios en utilisant les mêmes paramètres de canal et de code, de sorte que les radios puissent communiquer ensemble.
- Le paramètre de canal contrôle la radiofréquence. Pour éviter le brouillage, sélectionnez un canal non utilisé par d'autres personnes dans votre secteur. Voir le tableau « Balayage », dans la section 3, pour en savoir plus sur la sélection d'un canal non utilisé.
- Le paramètre de code de la radio émettrice doit être le même que celui de la radio réceptrice; si ce n'est pas le cas, la radio réceptrice bloque le signal reçu. Cette fonction vous aide à mettre en sourdine les voix indésirables d'autres utilisateurs radio émettant sur votre canal.
- Lorsque le code est réglé à zéro, la radio ne bloque aucun signal et tout ce qui est capté sur le canal est envoyé au haut-parleur. Motorola Solutions recommande de régler votre code à zéro lorsque vous communiquez avec une radio qui ne prend pas en charge la fonction de code. Reportez-vous à la section 3, « Navigation dans les pages du menu », pour des instructions détaillées sur la façon de modifier les paramètres.
- Les paramètres de canal et de code peuvent être copiés d'une radio à plusieurs autres radios simultanément grâce à une fonction accessible par raccourci, appelée « couplage facile ». Voir le tableau « Couplage facile », dans la section 1, pour des instructions sur la façon de copier les paramètres de canal et de code.

### Puissance d'émission

- Dans certains pays, différents niveaux de puissance sont autorisés pour différents canaux. L'icône H/L (élevé/faible) indique si le canal courant est un canal à puissance élevée ou faible. Motorola Solutions vous recommande d'utiliser des canaux à puissance élevée pour obtenir des communications plus fiables. Sélectionnez les canaux à faible puissance uniquement lorsque vos radios ne sont pas éloignées les unes des autres et que vous voulez maximiser la durée de vie de la batterie.

### Tonalité d'appel

Lorsque vous envoyez une tonalité d'appel, la radio réceptrice émet une tonalité rappelant la sonnerie d'un téléphone.

### Balayer

La radio procède à un balayage pour détecter l'activité vocale en parcourant les canaux. Lors de la détection d'un signal, ce signal est envoyé au haut-parleur. Cette fonction vous permet de déterminer si un canal est actuellement utilisé par d'autres groupes et soumis à un trafic important. Au moment de décider du canal à utiliser pour votre groupe, cette fonction vous aide à éviter les canaux déjà occupés.

### Moniteur

Vous pouvez tout entendre, y compris le bruit sur votre canal radio actuel. Cette fonction vous permet de surveiller un canal pour repérer les signaux faibles.

### Tonalité de confirmation

Avec cette fonction, un bip est produit pour marquer la fin de l'émission lorsque vous relâchez la touche PTT. La tonalité de confirmation entendue par le récepteur indique que le message a bien été reçu en entier.

### Résistance aux intempéries

Cette radio résiste aux intempéries conformément aux normes IP54. La radio résiste aux éclaboussures d'eau occasionnelles uniquement lorsque les couvercles de la batterie et du connecteur sont scellés. Ne pas exposer la radio à l'eau pendant une période prolongée. Ne pas submerger la radio dans l'eau.

### Information sur la batterie

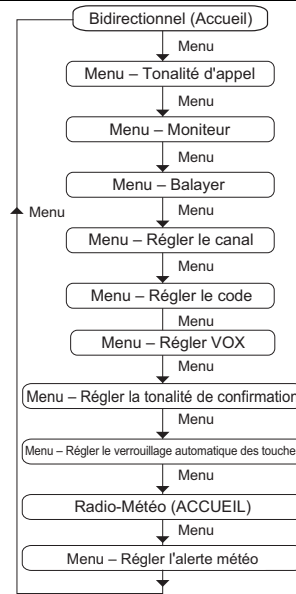
La durée de vie nominale de la batterie est mesurée en laboratoire sur la base d'un cycle de service 5-5-90, qui constitue la norme de l'industrie. (5 % de temps d'émission, 5 % de temps de réception avec haut-parleur activé, 90 % d'attente pour un appel entrant.)

**MISE EN GARDE :** L'utilisation d'une batterie de rechange d'un type non approprié est associée à un risque d'explosion.

### Entretien de la capacité de la batterie

La radio de série T38x est équipée d'une batterie au lithium-ion rechargeable. Cette batterie doit être entièrement chargée avant la première utilisation pour assurer une capacité et une performance optimales. L'autonomie de la batterie dépend de plusieurs facteurs. Parmi les plus

## 3. Navigation dans les pages du menu



Utilisez la touche **Menu** pour faire défiler l'écran du menu. Appuyez sur cette touche pour quitter l'écran du menu et revenir à l'écran d'accueil.

Écran du menu	Utilisez la touche + ou - pour effectuer les actions suivantes :
Tonalité d'appel	Permet de lancer ou d'arrêter l'émission de la tonalité d'appel.
Moniteur MON	Permet de lancer ou d'arrêter la surveillance de l'onde aérienne. Vous pouvez entendre les signaux émis sur le canal de votre radio. S'il n'y a pas de signal, vous pouvez entendre de la statique.
Balayer Z	Permet de lancer ou d'arrêter le balayage de l'onde aérienne. La radio balaye tous les canaux, un à un. Lorsqu'un signal est détecté, vous entendez ce signal sur le haut-parleur et la radio affiche le canal du signal détecté.
Régler VOX VOX/iVOX	Pour modifier le paramètre de transmission activée par la voix (VOX), sélectionnez OFF (ARRÊT) ou L1 à L3. L3 étant le réglage le plus sensible, utilisez-le dans des environnements peu bruyants.
Régler la tonalité de confirmation	Permet d'activer ou de désactiver la tonalité de confirmation. La tonalité de confirmation consiste en un bip, que l'on entend lorsque la touche PTT est relâchée.
Régler le canal (le numéro de canal clignote)	Permet de modifier le paramètre de canal de la radio.
Régler le code (le numéro de code clignote)	Permet de modifier le paramètre de code de la radio.
Régler le verrouillage automatique des touches	Permet de modifier le paramètre de verrouillage automatique des touches.
Radio-Météo (ACCUEIL) WEATHER	Lorsque l'affichage du canal météo est activé (ne clignote pas), utilisez les boutons +/- pour modifier le réglage du volume du haut-parleur, ou encore, utilisez la touche Menu pour faire clignoter le canal météo. Lorsque l'affichage du canal météo clignote, utilisez les boutons +/- pour modifier le réglage du canal météo.
Régler l'alerte météo	Permet d'activer ou de désactiver la fonction d'alerte météo.

importants, on retrouve la surcharge régulière de la batterie et le niveau de perte de charge moyen associé à chaque cycle. Généralement, un état de surcharge fréquent et un niveau de perte de charge moyen important contribuent à diminuer le nombre de cycles de la batterie. Par exemple, une batterie surchargée et déchargée à 100 % plusieurs fois par jour offrira moins de cycles de vie qu'une batterie moins surchargée et dont le niveau de perte de charge est de 50 % par jour. En outre, une batterie dont l'état de surcharge est minimal et dont le niveau de perte de charge moyen est de 25 % durera plus longtemps.

### Minuterie du délai d'inactivité Presser pour Parler (PTT)

Pour éviter le brouillage d'onde aérienne, l'émission prend fin au bout d'une minute même si la touche PTT reste enfoncée. Pour réinitialiser la minuterie, relâchez brièvement la touche PTT.

### Fréquences de canal météo

Canal météo	Fréquence (MHz)	Canal météo	Fréquence (MHz)
WX1	162,550	WX7	162,525
WX2	162,400	WX8	161,650
WX3	162,475	WX9	161,775
WX4	162,425	WX10	161,750
WX5	162,450	WX11	162,000
WX6	162,500		

### Récepteur météo

Votre radio permet d'écouter les diffusions des radios de conditions météorologiques de la United States National Oceanic and Atmospheric Administration (NOAA) et d'Environnement et Changement climatique Canada (ECCC). Vous pouvez écouter un canal météo (voir le tableau « Fréquences et canaux météo » pour plus de détails) ou configurer votre radio pour recevoir les alertes météo d'urgence qui interrompent les diffusions de routine.

## 4. Utilisation de votre radio

Assurez-vous d'être en mode Radio bidirectionnelle en recherchant l'icône **Bidirectionnel** sur l'écran ACL. Vous pouvez revenir en mode bidirectionnel en appuyant brièvement sur la touche PTT.

### Parler/émettre

- Maintenez la touche PTT enfoncée, puis commencez à parler dans le microphone.
- Relâchez la touche PTT pour interrompre l'émission.

Remarque : N'appuyez pas sur la touche PTT lorsque d'autres personnes parlent. Lorsque plus d'une radio émet sur un même canal, l'onde aérienne est brouillée et toutes les émissions sont perdues.

### Écouter/recevoir

- Le haut-parleur de la radio reçoit automatiquement le signal si la radio est réglée sur le même canal et sur le même code que la radio émettrice.
- Assurez-vous que le volume du haut-parleur est réglé à un niveau approprié.

### Régler du volume du haut-parleur

- Appuyez sur + ou - à partir des écrans Bidirectionnel ou Accueil météo.

### Verrouillage automatique des touches

- Lorsque la fonction de verrouillage automatique des touches est activée, les trois touches avant se verrouillent après 10 secondes d'inactivité.
- Pour déverrouiller les trois touches avant, appuyez sur n'importe quelle de ces touches et maintenez-la enfoncée pendant 2 secondes.

### Utilisation d'un casque d'écoute

- Lorsqu'un casque d'écoute est connecté à la radio, le haut-parleur de la radio est désactivé. Vous devez porter le casque d'écoute pour surveiller et recevoir des messages.
- Si votre casque d'écoute est doté d'une touche PTT, vous pouvez utiliser cette touche pour émettre avec le microphone du casque.
- Vous pouvez quand même utiliser la touche PTT de la radio pour émettre avec le microphone de la radio.

### Écoute de la radiodiffusion météo

Accédez à la page du menu **Radio-Météo (ACCUEIL)** pour écouter la radiodiffusion météo. Dans cette page du menu, votre radio ne reçoit pas le signal des autres radios bidirectionnelles.

À partir de la page du menu **Radio-Météo (ACCUEIL)**, vous pouvez utiliser la touche + ou - pour modifier le volume du haut-parleur, utiliser la touche **Menu** pour faire clignoter l'écran du canal météo ou utiliser la touche + ou - pour changer de canal.

### Alerte météo

Votre radio peut être définie de manière à répondre aux messages d'urgence de la radio météo de la NOAA. Une tonalité d'alarme spéciale retentit pour vous alerter et le récepteur météo vous donne des renseignements sur l'urgence et la météo immédiates. Vous pouvez activer ou désactiver cette alerte dans la page **Menu - Régler l'alerte météo**.

Les deux organismes, la NOAA et ECCC, disposent d'émetteurs situés à travers les États-Unis et le Canada, respectivement. Ces émetteurs diffusent des renseignements de veille, des prévisions et d'autres renseignements 24 heures sur 24.

Adressez-vous au bureau météorologique de votre région pour de l'information détaillée sur la fréquence ou visitez le site [www.weather.gov/nwr](http://www.weather.gov/nwr) aux É.-U. pour connaître l'émetteur approprié pour votre région.

Comme pour la réception radio bidirectionnelle, la réception du canal météo dépend de la distance qui vous sépare de l'émetteur et varie selon que vous vous trouvez à l'intérieur ou à l'extérieur. Parce que les canaux météo émettent sans code, ils peuvent être associés à de la statique ou du bruit. L'alerte météo ne fonctionne pas pendant une émission ou une réception active en mode bidirectionnel.

L'utilisation du logo de la NOAA ne représente pas une approbation ou une approbation implicite par le service météorologique national de la NOAA, et l'utilisation du logo Radio-Météo ne représente pas une approbation ou une approbation implicite par Environnement et Changement climatique Canada (ECCC).

### Canal et fréquences

Canal	Fréquence (MHz)	Alimentation (W)	Canal	Fréquence (MHz)	Alimentation (W)
1	462,5625	2,0	12	467,6625	0,5
2	462,5875	2,0	13	467,6875	0,5
3	462,6125	2,0	14	467,7125	0,5
4	462,6375	2,0	15	462,5500	2,0
5	462,6625	2,0	16	462,5750	2,0
6	462,6875	2,0	17	462,6000	2,0
7	462,7125	2,0	18	462,6250	2,0
8	467,5625	0,5	19	467,6500	2,0
9	467,5875	0,5	20	462,6750	2,0
10	467,6125	0,5	21	462,7000	2,0
11	467,6375	0,5	22	462,7250	2,0

Remarque : La valeur de puissance désigne la puissance maximale admissible telle que définie par la FCC/ISDE pour chaque canal en vertu des règles FRS pour les États-Unis, FCC/ISDE pour chaque canal en vertu des règles FRS pour les États-Unis et FRS/GMRS pour le Canada, et ne reflète pas la spécification de puissance de la radio.

MOTOROLA, MOTO, MOTOROLA SOLUTIONS et le logo stylisé M sont des marques de commerce ou des marques déposées de Motorola Trademark Holdings, LLC et sont utilisées sous licence. Toutes les autres marques de commerce sont la propriété de leurs détenteurs respectifs.  
© 2021 Motorola Solutions, Inc. Tous droits réservés.



MN007509A01-AA

