

## **EXHIBIT 9**

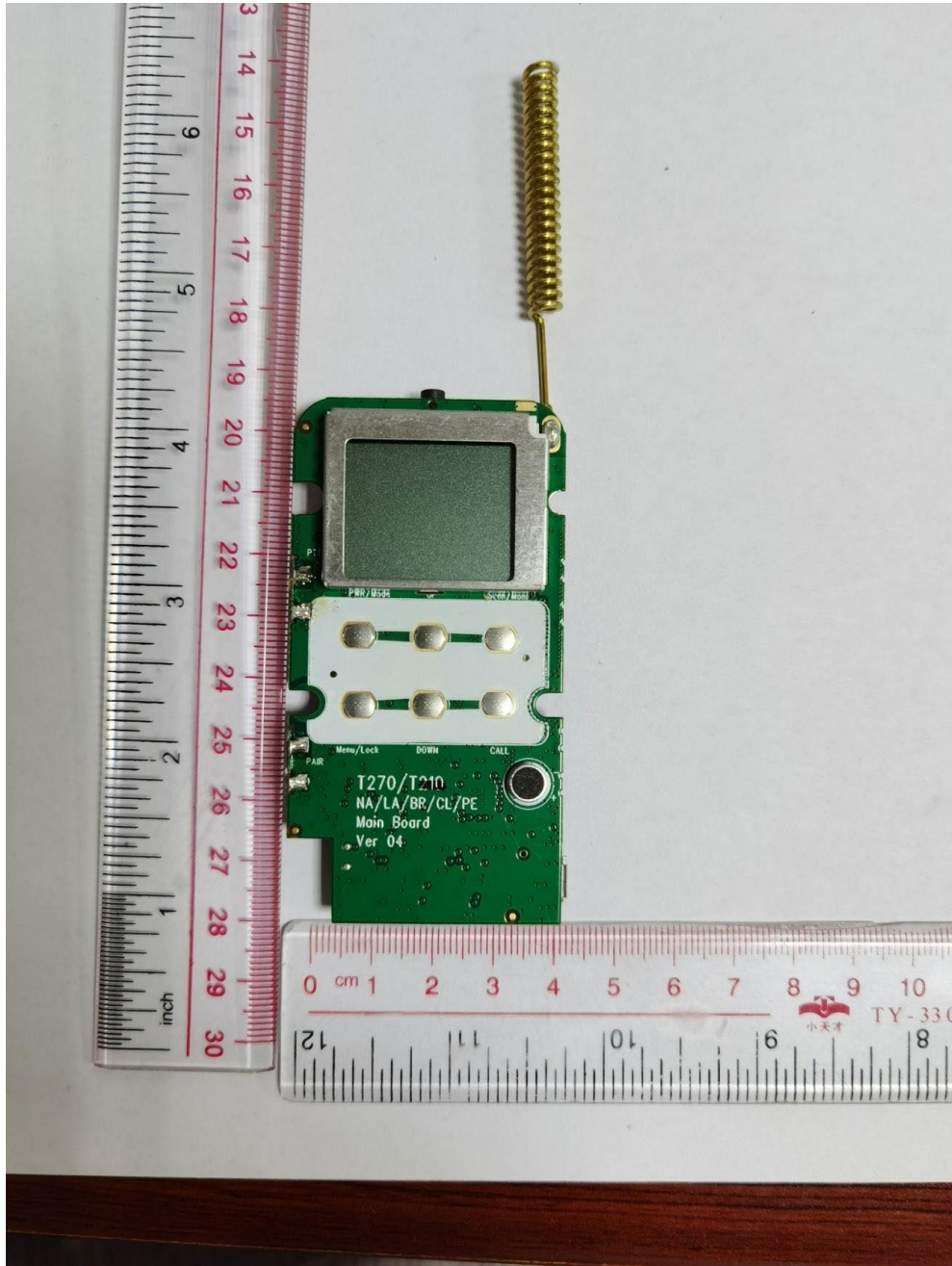
### **Internal Photographs**

(Pursuant to FCC Part 2.1033(b)(7), 2.1033(c)(12) and RSP 100 Annex C)

The following photographs are attached.

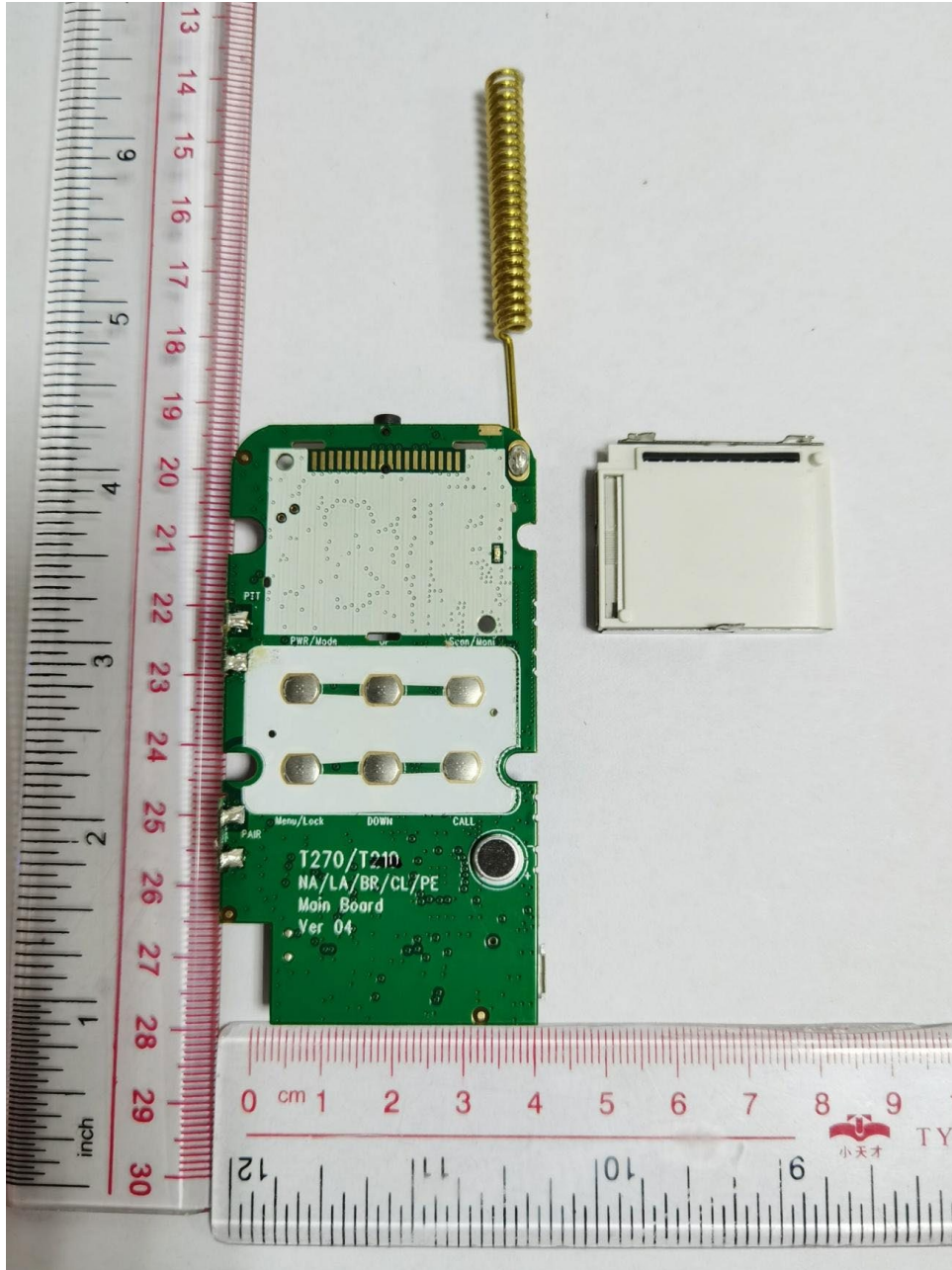
	<u>Exhibit</u>
1. RF board <u>with</u> Shields (Front View)	9A
2. RF board <u>without</u> Shields (Front View)	9B
3. RF board <u>with</u> Shields (Back View)	9C
4. RF board <u>without</u> Shields (Back View)	9D
5. RF Board with Chassis and Housing (Front View)	9E
6. Chassis and Housing (Back View)	9F
7. Exploded View of Radio	9G

**EXHIBIT 9A: RF board with Shields (Front View)**



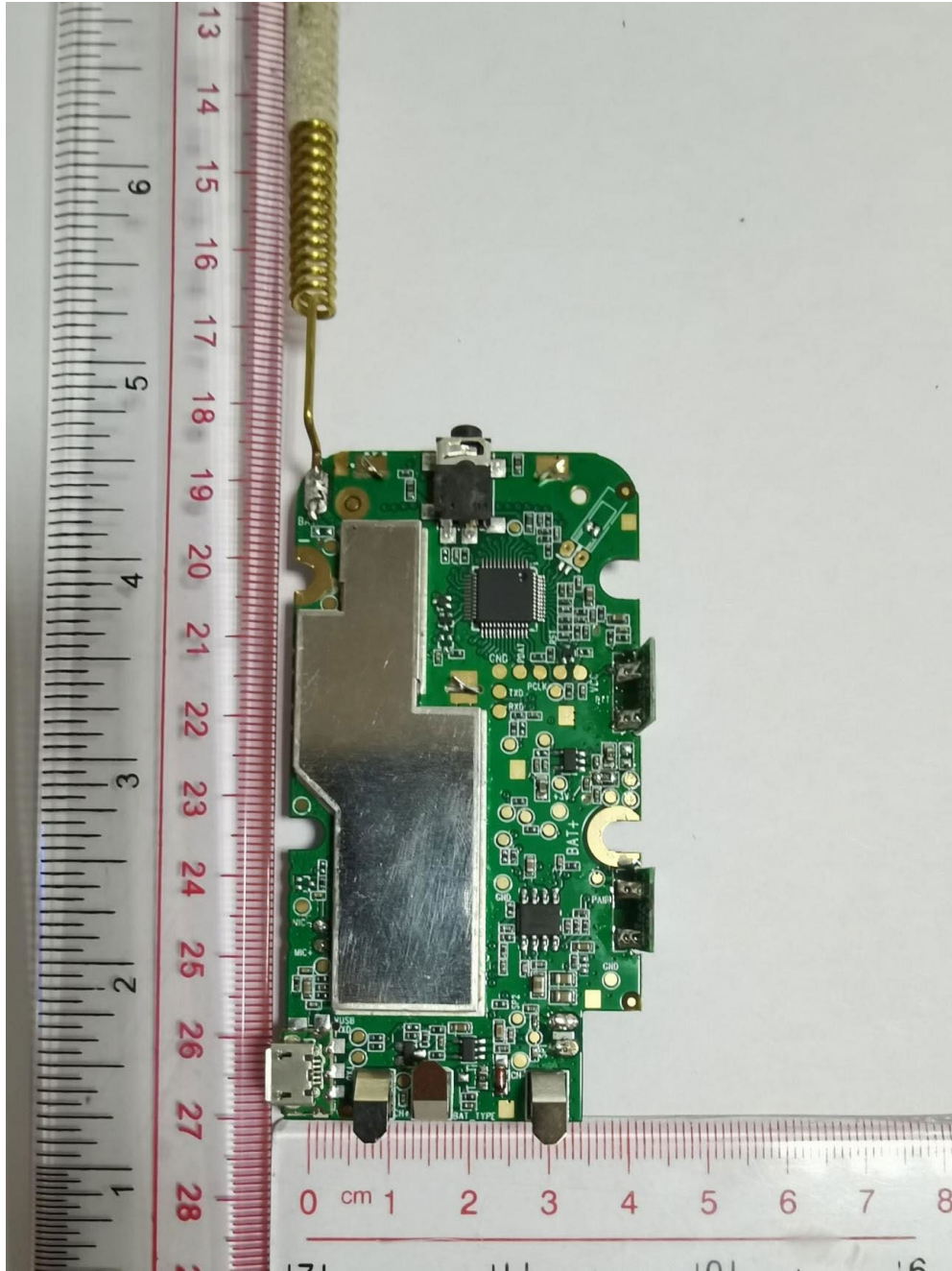
T210 Red/ T210TP Red  
(Note: All series using the same PCB)

**EXHIBIT 9B: RF board without Shields (Front View)**



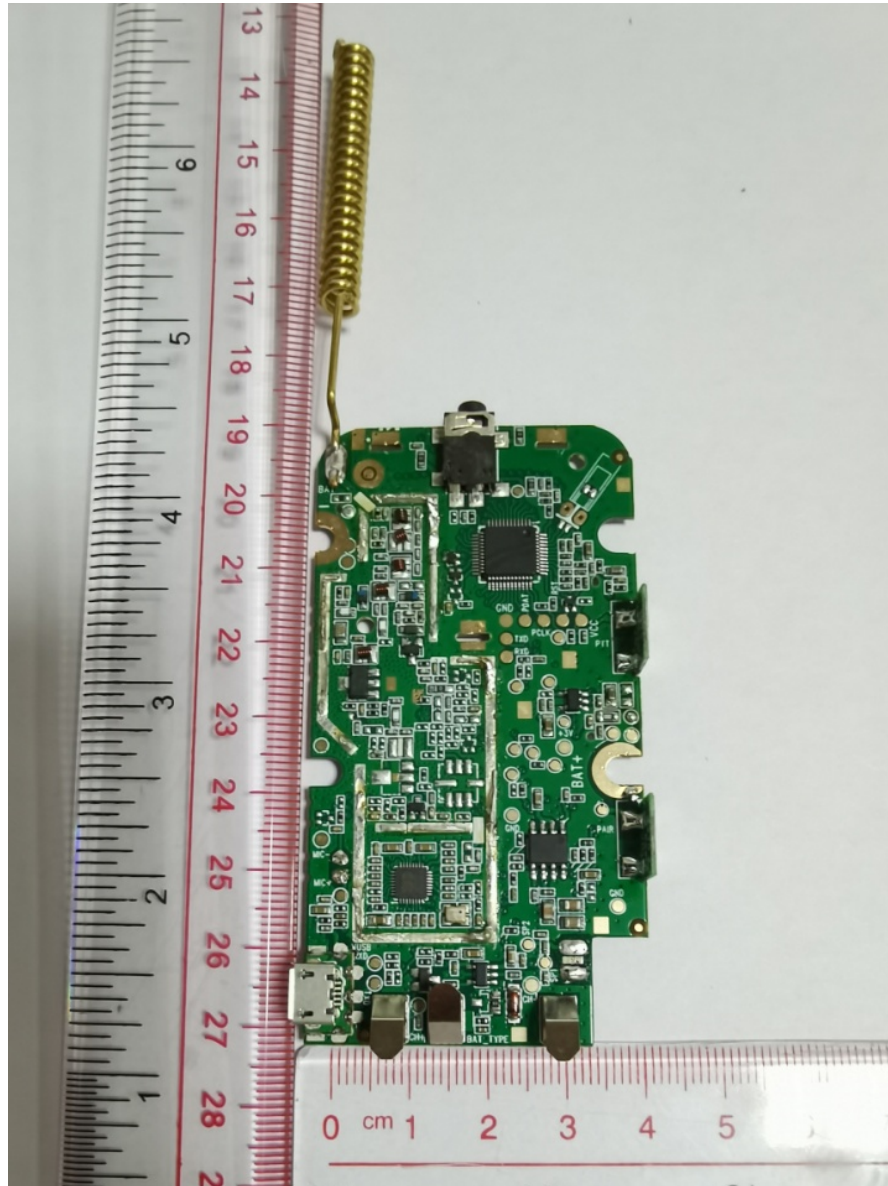
T210 Red/ T210TP Red  
(Note: All series using the same PCB)

**EXHIBIT 9C: RF board with Shields (Back View)**



T210 Red/ T210TP Red  
(Note: All series using the same PCB)

**EXHIBIT 9D: RF board without Shields (Back View)**



T210 Red/ T210TP Red  
(PCB without Weather IC)

**EXHIBIT 9E: RF Board with Chassis and Housing (Front View)**



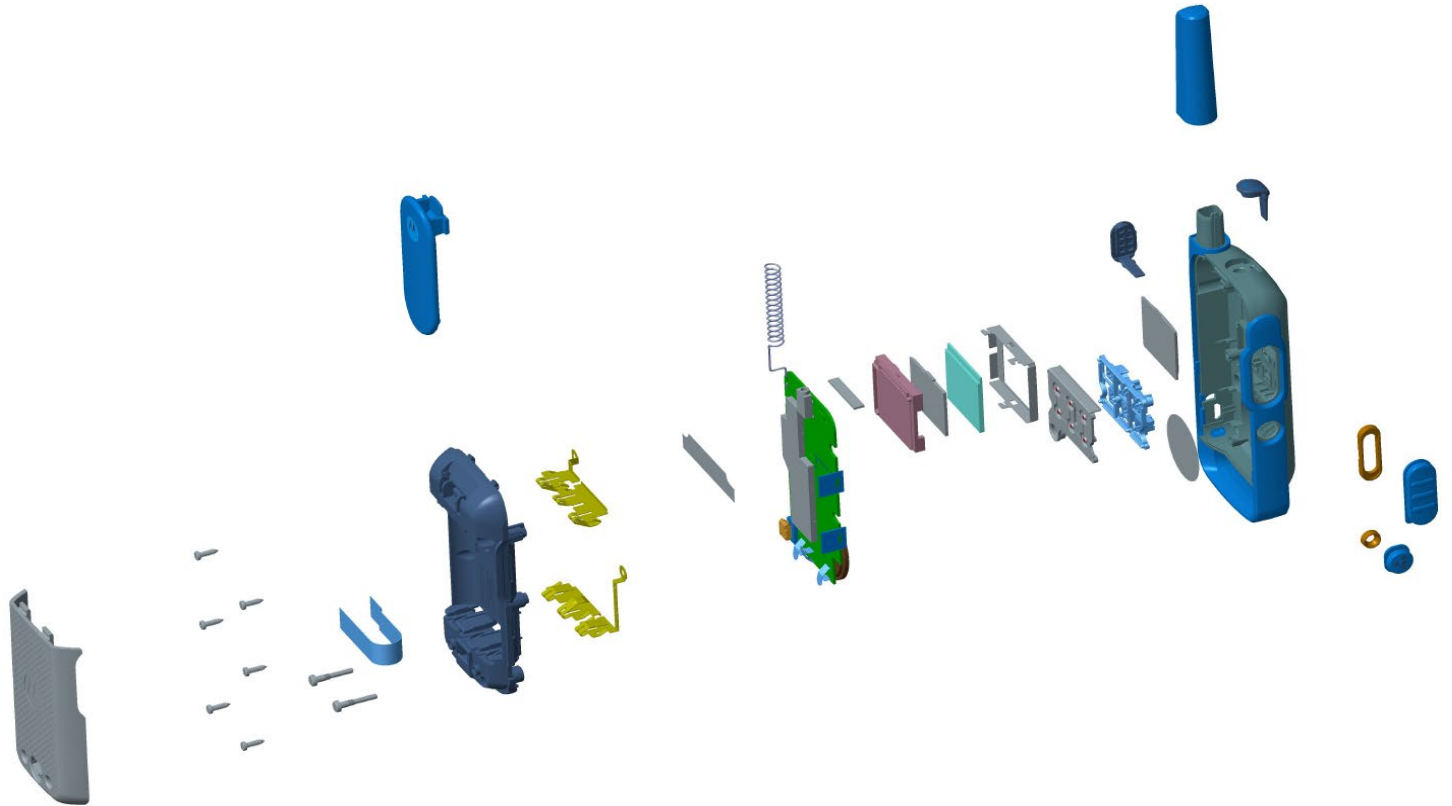
T210 Red/ T210TP Red

**EXHIBIT 9F: Chassis and Housing (Back View)**



T210 Red/ T210TP Red

**EXHIBIT 9G: Exploded View of Radio**



T210 Red/ T210TP Red  
(Note: All series same exploded view)

\*\*\* END \*\*\*