

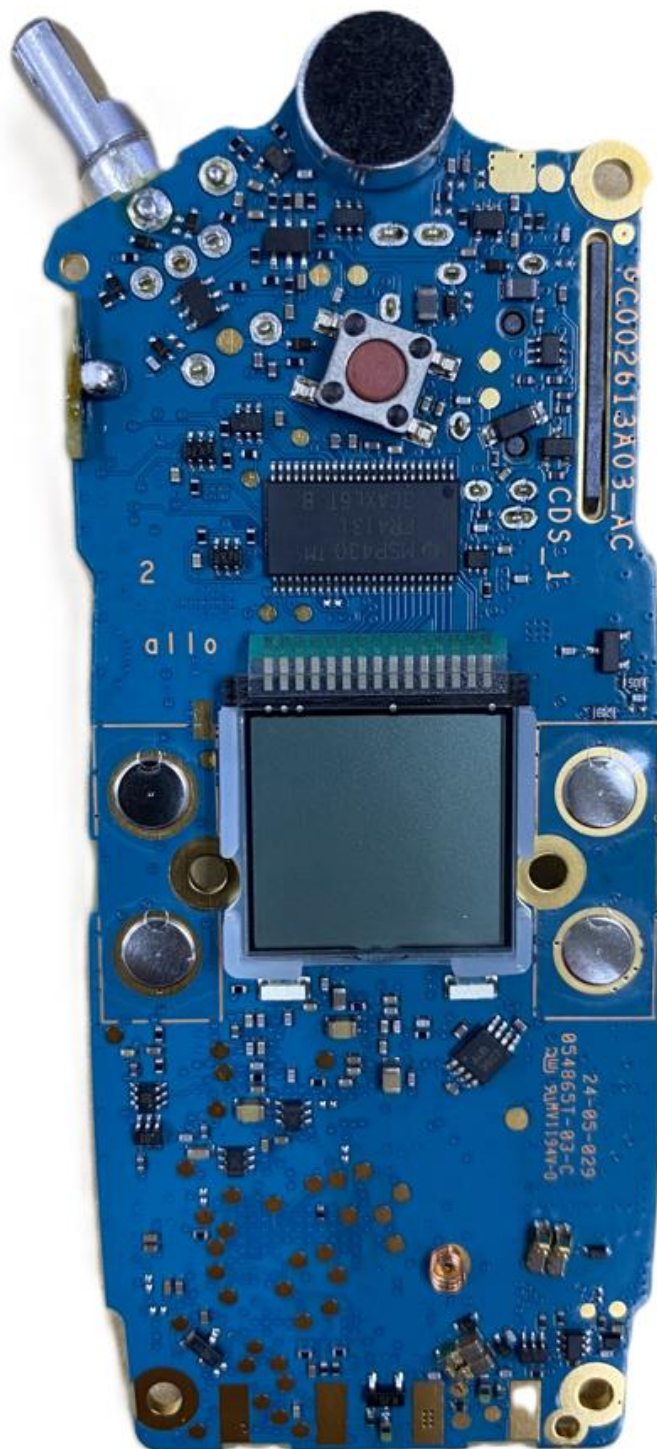
EXHIBIT 9**Internal Photographs**

(Pursuant to FCC Part 2.1033(b)(7), 2.1033(c)(12) and RSP 100 Annex C)

The following photographs are attached.

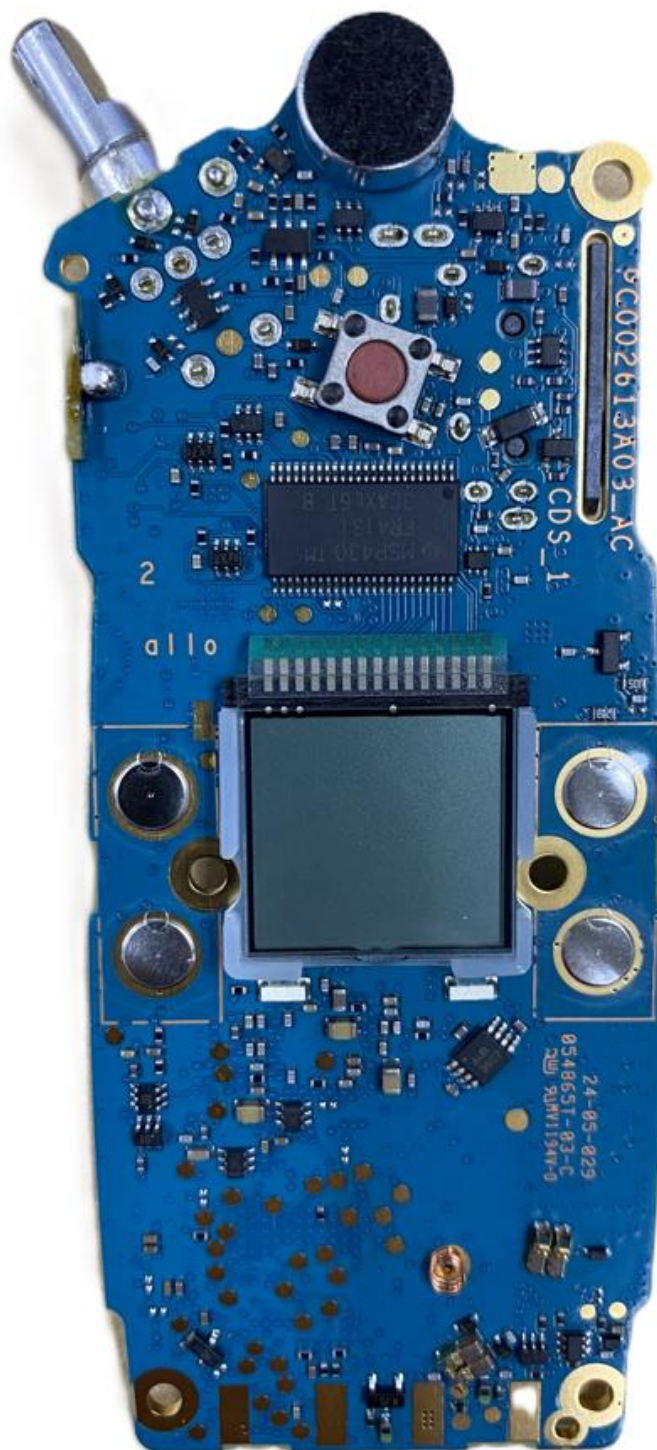
	<u>Exhibit</u>
1. RF board <u>with</u> Shields (Top) [CLS1410, CLS1110, CLS1413, CLS1810T, VL50]	9A
2. RF board <u>without</u> Shields (Top) [CLS1410, CLS1110, CLS1413, CLS1810T, VL50]	9B
3. RF board <u>with</u> Shields (Bottom) [CLS1410, CLS1110, CLS1413, CLS1810T, VL50]	9C
4. RF board <u>without</u> Shields (Bottom) [CLS1410, CLS1110, CLS1413, CLS1810T, VL50]	9D
5. RF boards <u>with</u> chassis and housing for (Front Side) [CLS1410, CLS1110, CLS1413, CLS1810T, VL50]	9E
6. Chassis and housing (Back Side) [CLS1410, CLS1110, CLS1413, CLS1810T, VL50]	9F

Exhibit 9A: RF board with Shields (Top)



Same for CLS1410, CLS1110, CLS1413, CLS1810T, VL50

Exhibit 9B: RF board without Shields (Top)



Same for CLS1410, CLS1110, CLS1413, CLS1810T, VL50

Exhibit 9C: RF board with Shields (Bottom)



Same for CLS1410, CLS1110, CLS1413, CLS1810T, VL50

Exhibit 9D: RF board without Shields (Bottom)



Same for CLS1410, CLS1110, CLS1413, CLS1810T, VL50

Exhibit 9E: RF boards with chassis and housing for (Front Side)



Same for CLS1410, CLS1110, CLS1413, CLS1810T, VL50. Only different in Label

Exhibit 9F: Chassis and housing (Back Side)



RF board with chassis and housing (Back Side)
[CLS1410: CU1410BKV4BA]



RF board with chassis and housing (Back Side)
[CLS1410: CU1410BKV4BB]



RF board with chassis and housing (Back Side)
[CLS1410: CU1410BKV4BS] - Model canceled on 17th November 2022



RF board with chassis and housing (Back Side)
[CLS110: CU1110GYN1BA]



RF board with chassis and housing (Back Side)
[CLS1110: CU1110GYN1BB]



RF board with chassis and housing (Back Side)
[CLS1413: HCUE1082G]



RF board with chassis and housing (Back Side)
[VL50: P24VPC03D2BA] - Model canceled on 17th November 2022



RF board with chassis and housing (Back Side)
[CLS1810T: GS1810BKN8BB]



RF board with chassis and housing (Back Side)
[CLS1810T: AP1810BKN8BB]

*** END ***