

**EXHIBIT 9****Internal Photographs**

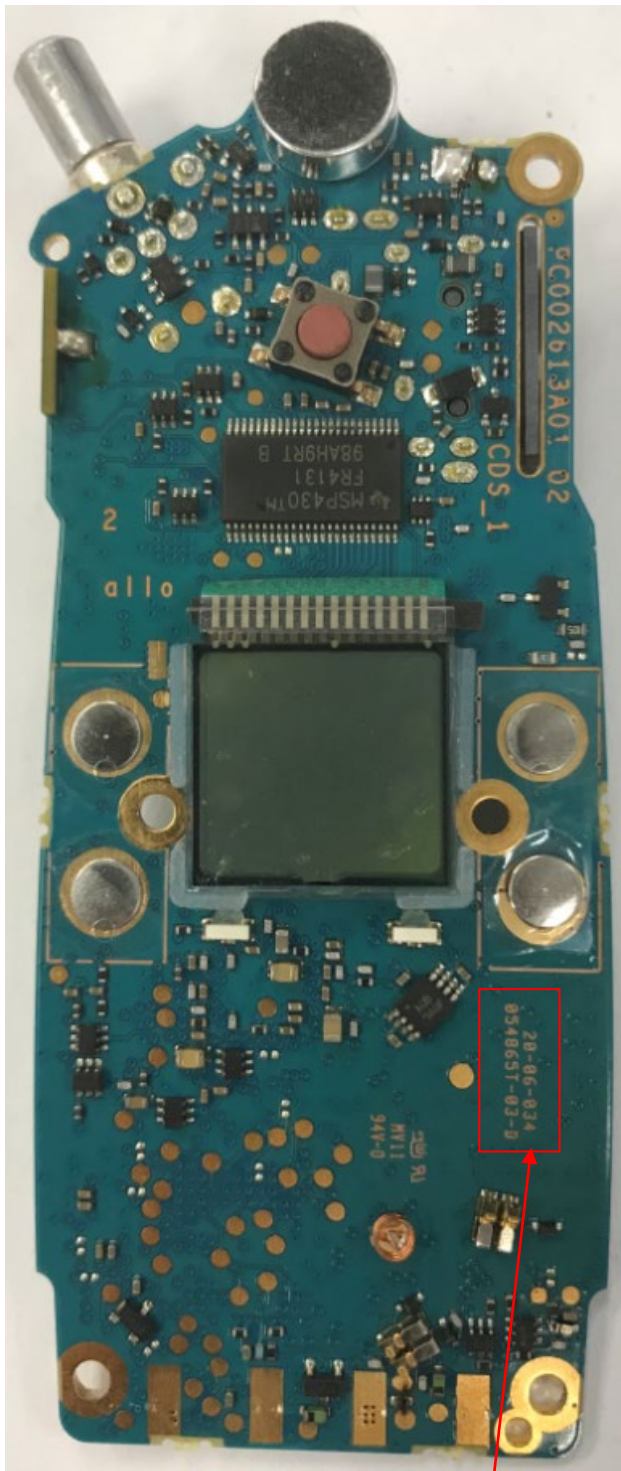
(Pursuant to FCC Part 2.1033(b)(7), 2.1033(c)(12) and RSP 100 Annex C)

The following photographs are attached.

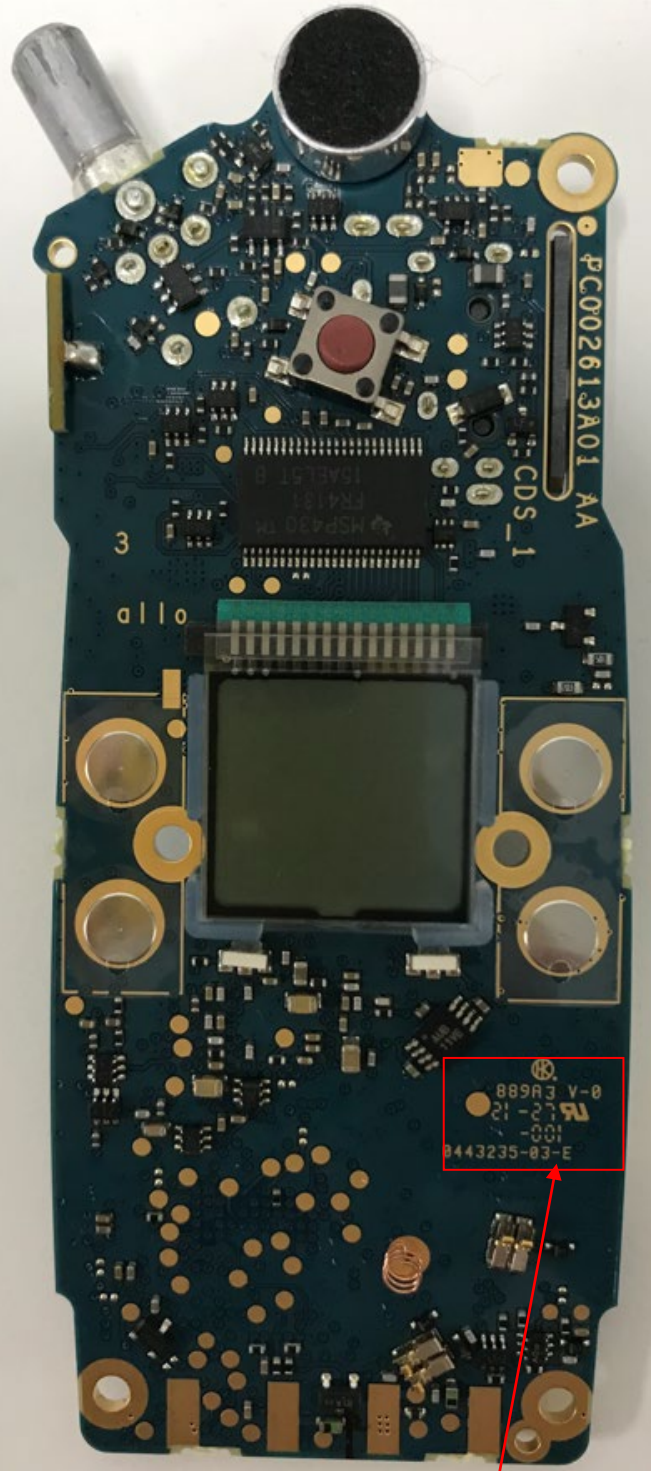
Exhibit

- |   |    |
|---|----|
| 1. RF board (Top)<br>[CLS1410, CLS1110, CL1413, CLS1810T, VL50]                                 | 9A |
| 2. RF board <u>with</u> Shields (Bottom)<br>[CLS1410, CLS1110, CL1413, CLS1810T, VL50]          | 9B |
| 3. RF board <u>without</u> Shields (Bottom)<br>[CLS1410, CLS1110, CL1413, CLS1810T, VL50]       | 9C |
| 4. RF board with chassis and housing (Front Side)<br>[CLS1410, CLS1110, CL1413, CLS1810T, VL50] | 9D |
| 5. RF board with chassis and housing (Back Side)<br>[CLS1410, CLS1110, CL1413, CLS1810T, VL50]  | 9E |
| 6. Exploded View of Radio<br>[CLS1410, CLS1110, CL1413, CLS1810T, VL50]                         | 9F |

**Exhibit 9A: RF board (Top)**



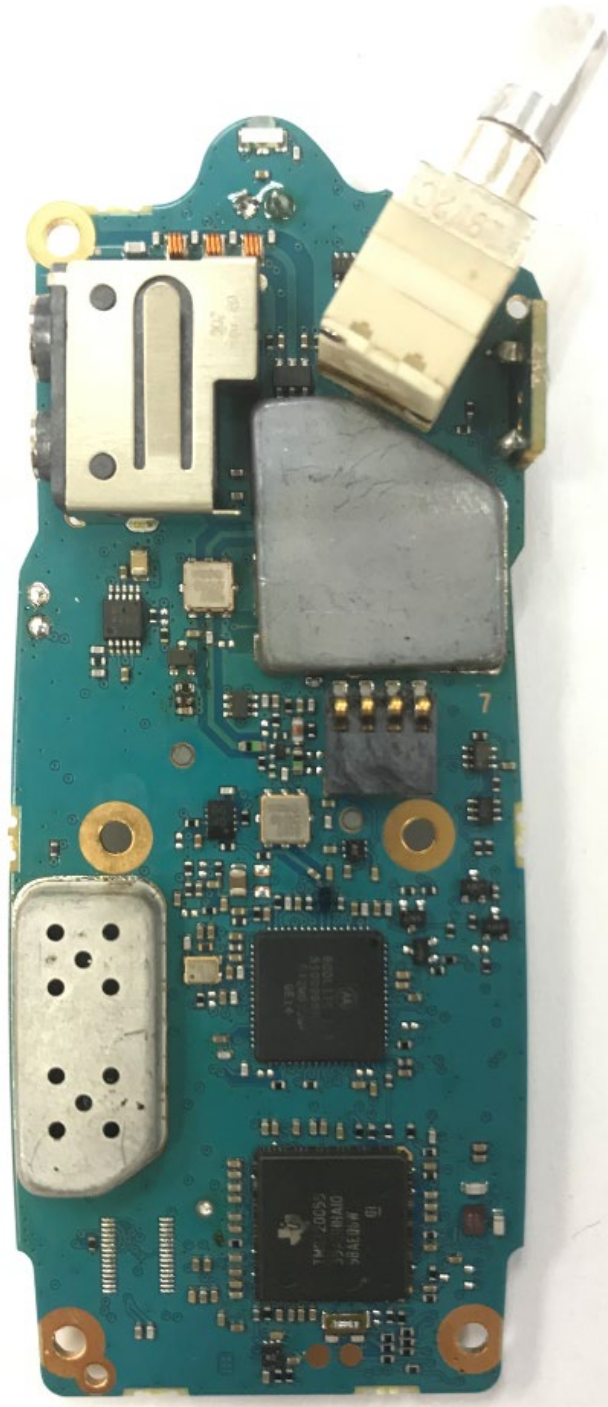
Origin PCB\_WUS



Second source PCB\_Multek

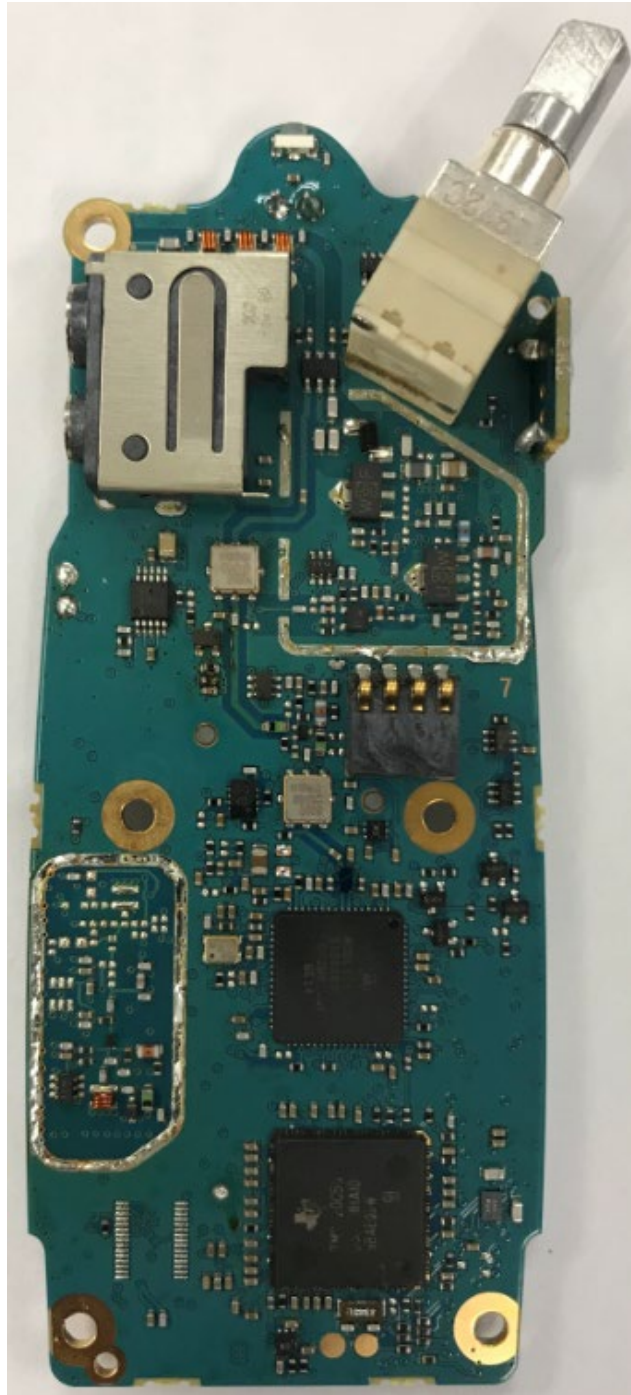
Same for CLS1410, CLS1110, CL1413, CLS1810T, VL50

**Exhibit 9B: RF board with Shields (Bottom)**



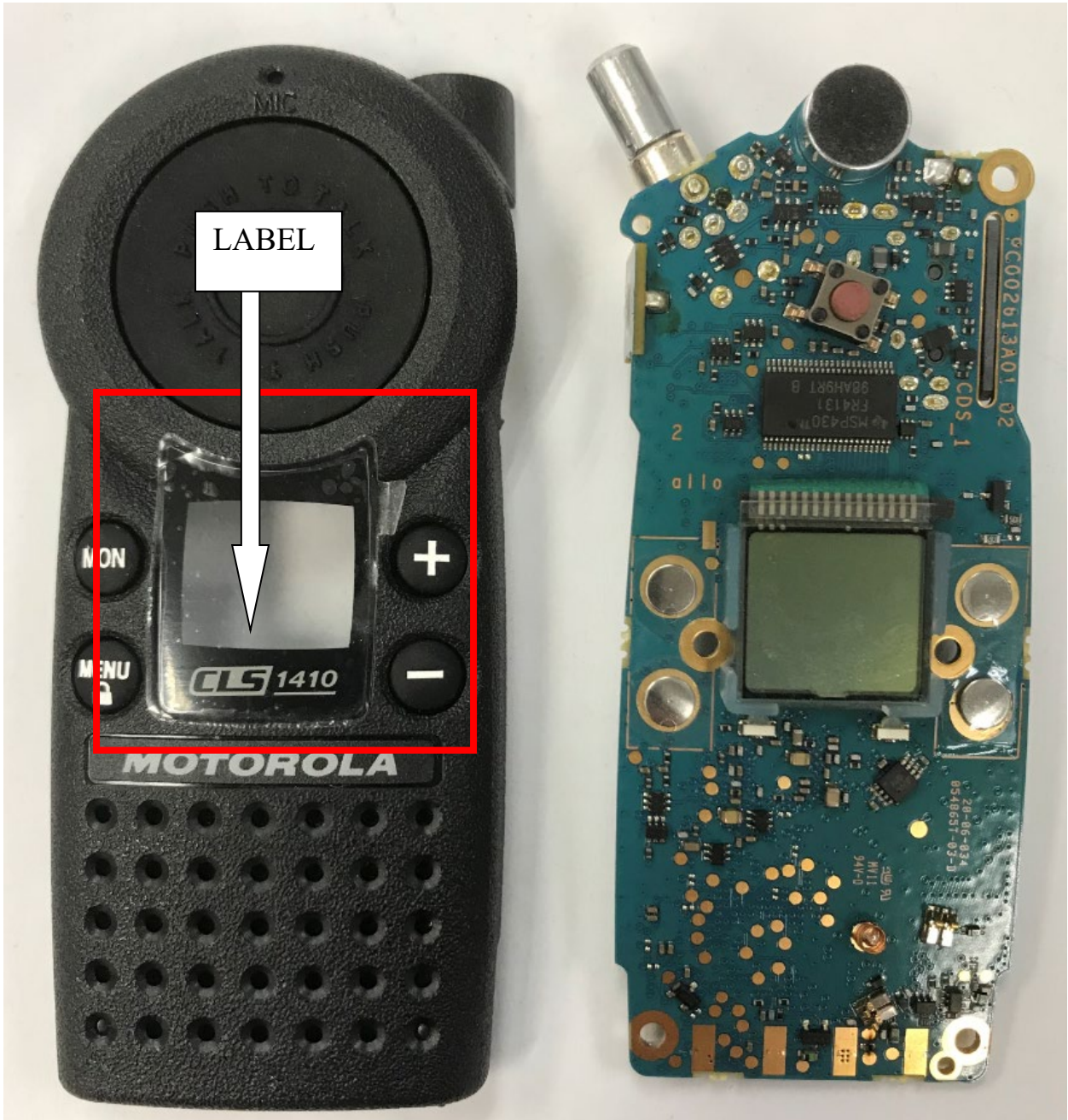
Same for CLS1410, CLS1110, CL1413, CLS1810T, VL50

**Exhibit 9C: RF board without Shields (Bottom)**



Same for CLS1410, CLS1110, CL1413, CLS1810T, VL50

**Exhibit 9D: RF board with chassis and housing (Front Side)**



Same for CLS1410, CLS1110, CL1413, CLS1810T, VL50. Only different in Label

**Exhibit 9E: RF board with chassis and housing (Back Side)**



RF board with chassis and housing (Back Side)  
[CLS1410: CU1410BKV4BA]



RF board with chassis and housing (Back Side)  
[CLS1410: CU1410BKV4BB]



RF board with chassis and housing (Back Side)  
[CLS1410: CU1410BKV4BS]





RF board with chassis and housing (Back Side)  
[CLS1110: CU110GYN1BA]



RF board with chassis and housing (Back Side)  
[CLS1110: CU1110GYN1BB]



RF board with chassis and housing (Back Side)  
[CLS1413: HCUE1082G]



RF board with chassis and housing (Back Side)  
[VL50: P24VPC03D2BA]

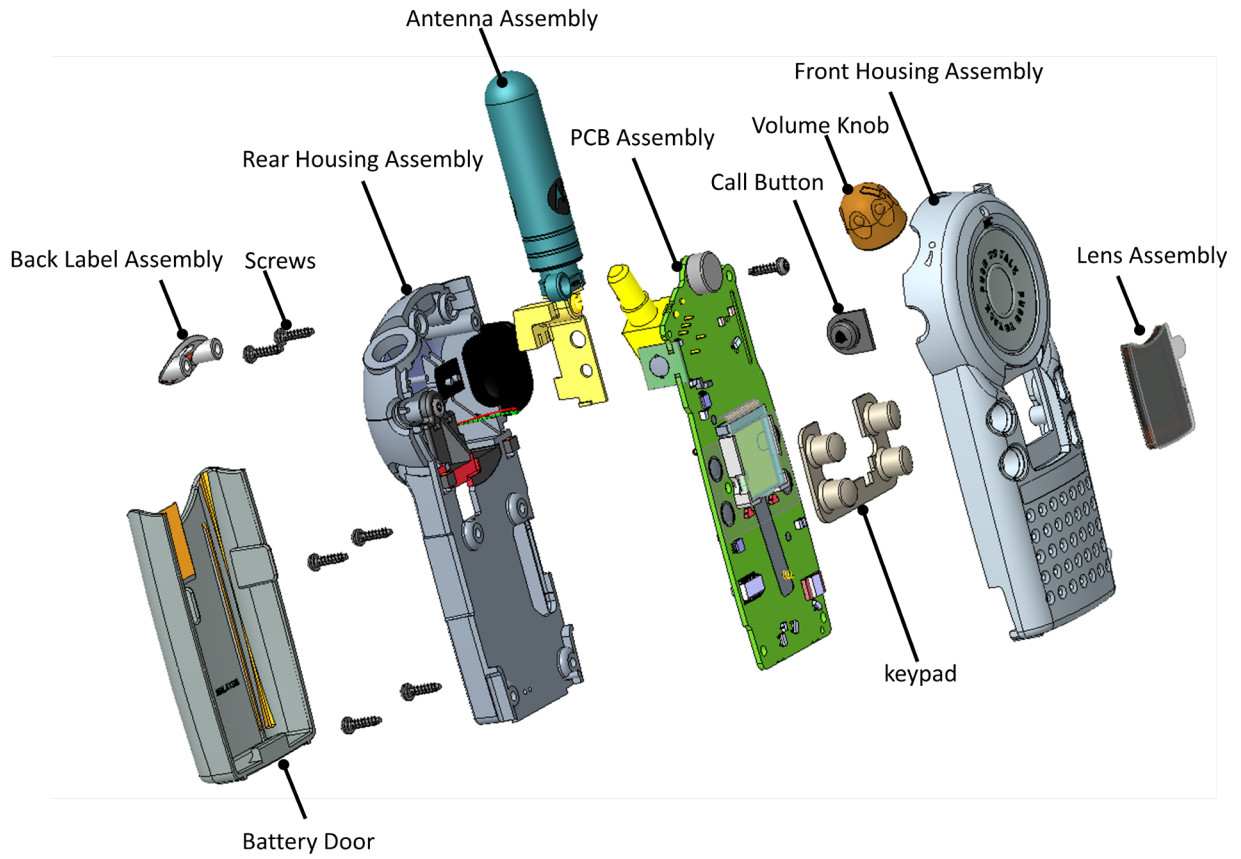


RF board with chassis and housing (Back Side)  
[CLS1810T: GS1810BKN8BB]



RF board with chassis and housing (Back Side)  
[CLS1810T: AP1810BKN8BB]

**Exhibit 9F: Exploded View of Radio**



Same for CLS1410, CLS1110, CL1413, CLS1810, VL50

\*\*\* END \*\*\*