

EXHIBIT 9

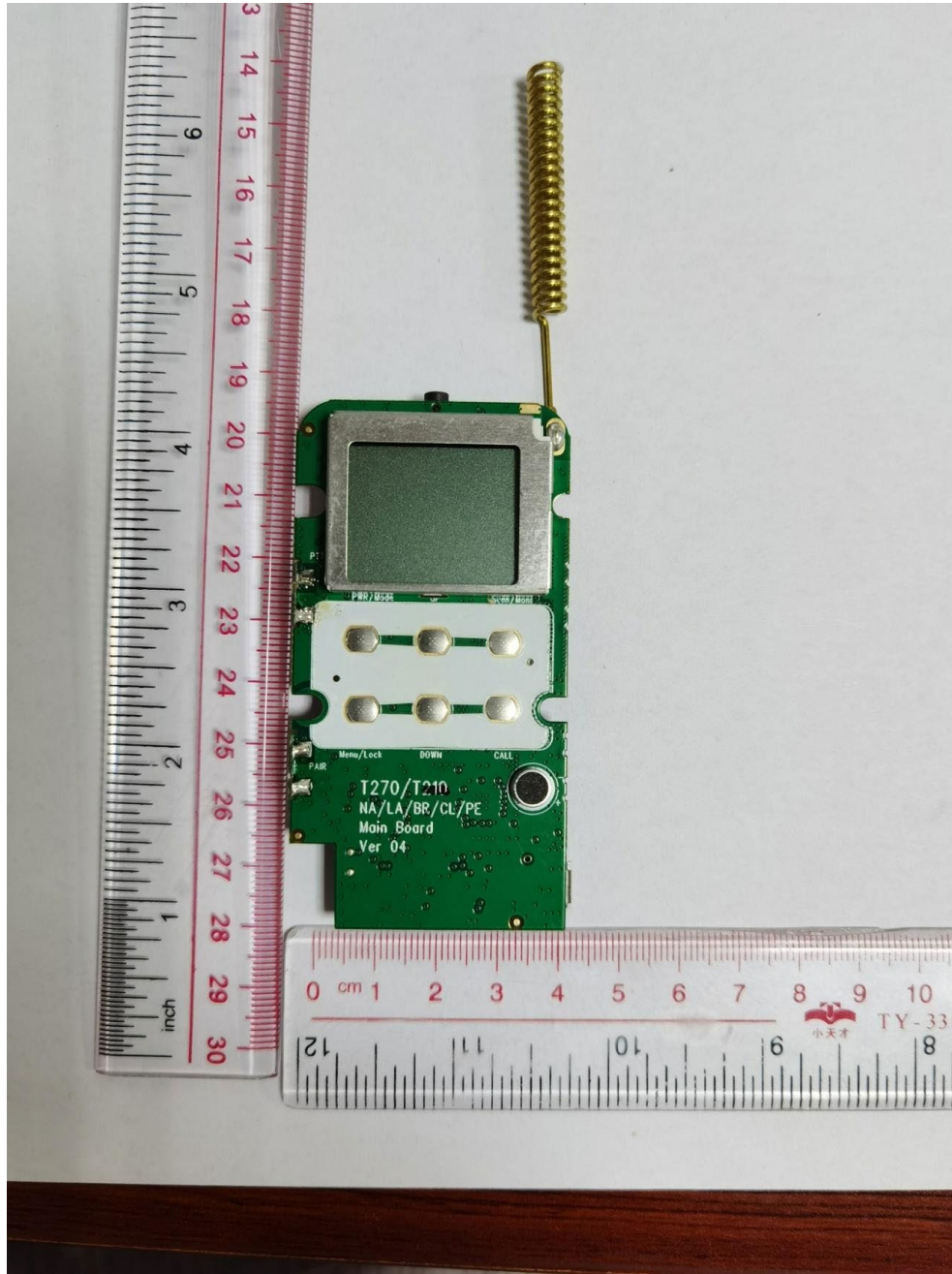
Internal Photographs

(Pursuant to FCC Part 2.1033(b)(7), 2.1033(c)(12) and RSP 100 Annex C)

The following photographs are attached.

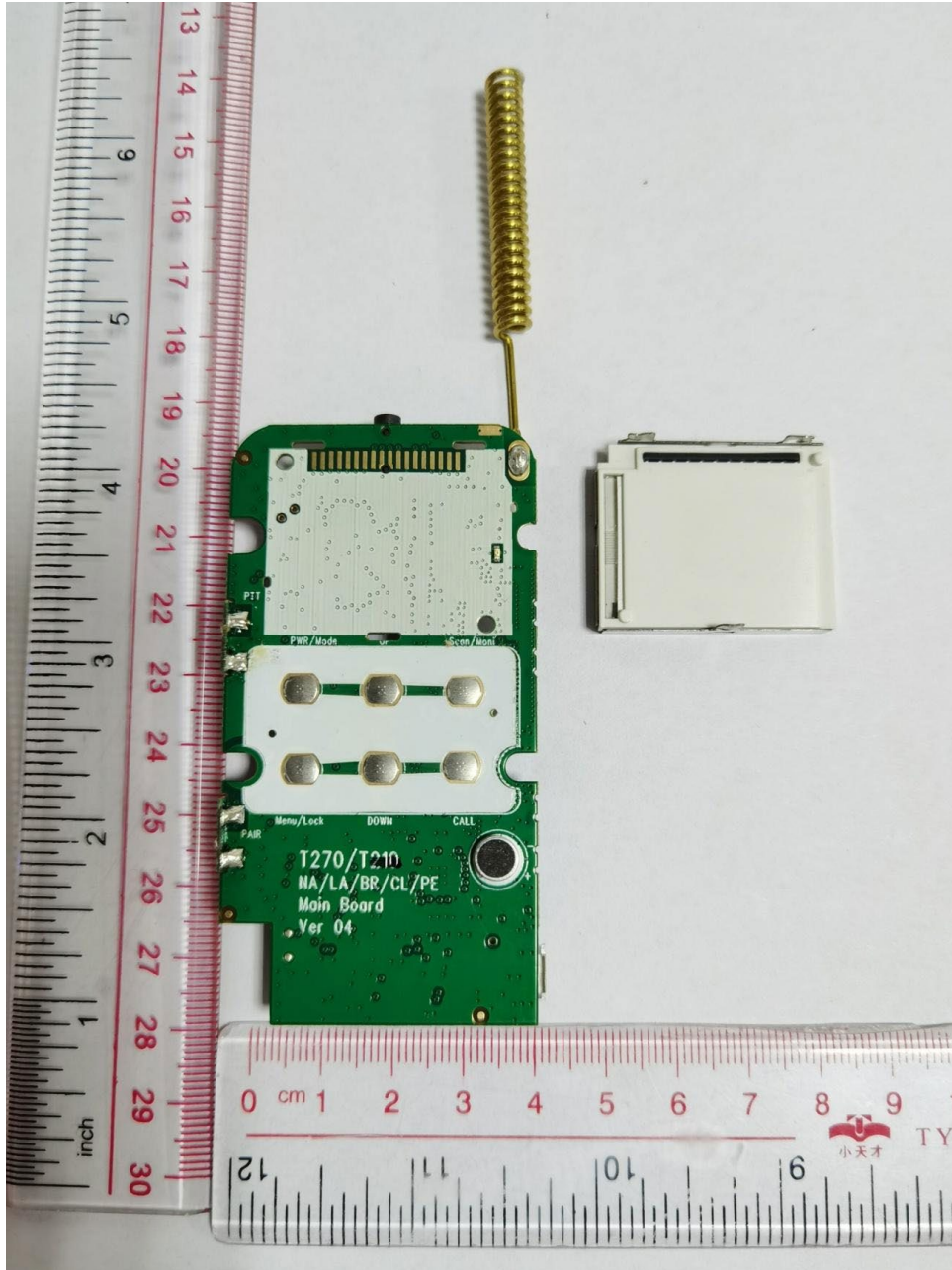
	<u>Exhibit</u>
1. RF board <u>with</u> Shields (Front View)	9A
2. RF board <u>without</u> Shields (Front View)	9B
3. RF board <u>with</u> Shields (Back View)	9C
4. RF board <u>without</u> Shields (Back View)	9D
5. RF Board with Chassis and Housing (Front View)	9E
6. Chassis and Housing (Back View)	9F
7. Exploded View of Radio	9G

EXHIBIT 9A: RF board with Shields (Front View)



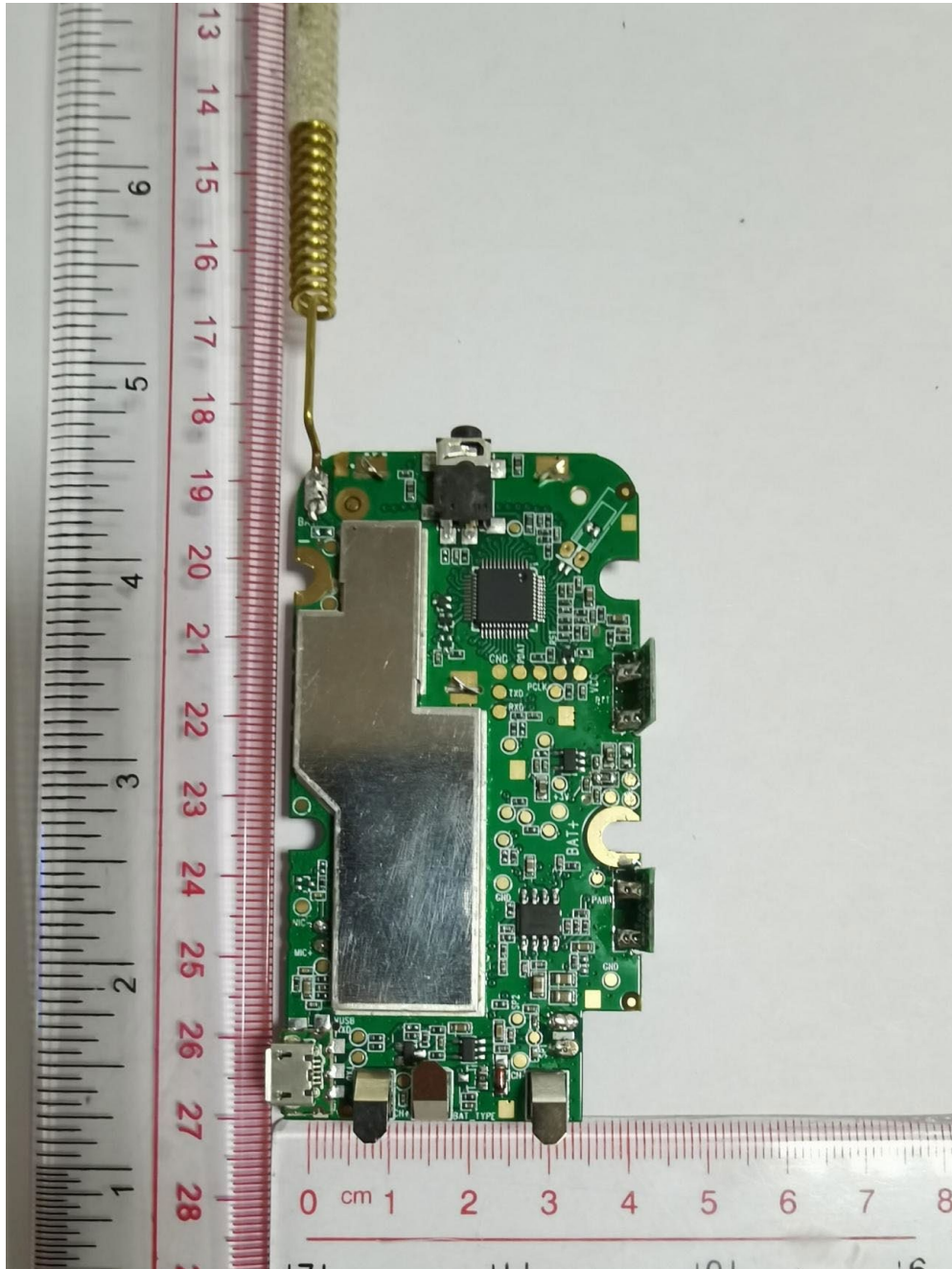
T270 Blue/ T270TP Blue/T271TP Yellow
(Note: All series using the same PCB)

EXHIBIT 9B: RF board without Shields (Front View)



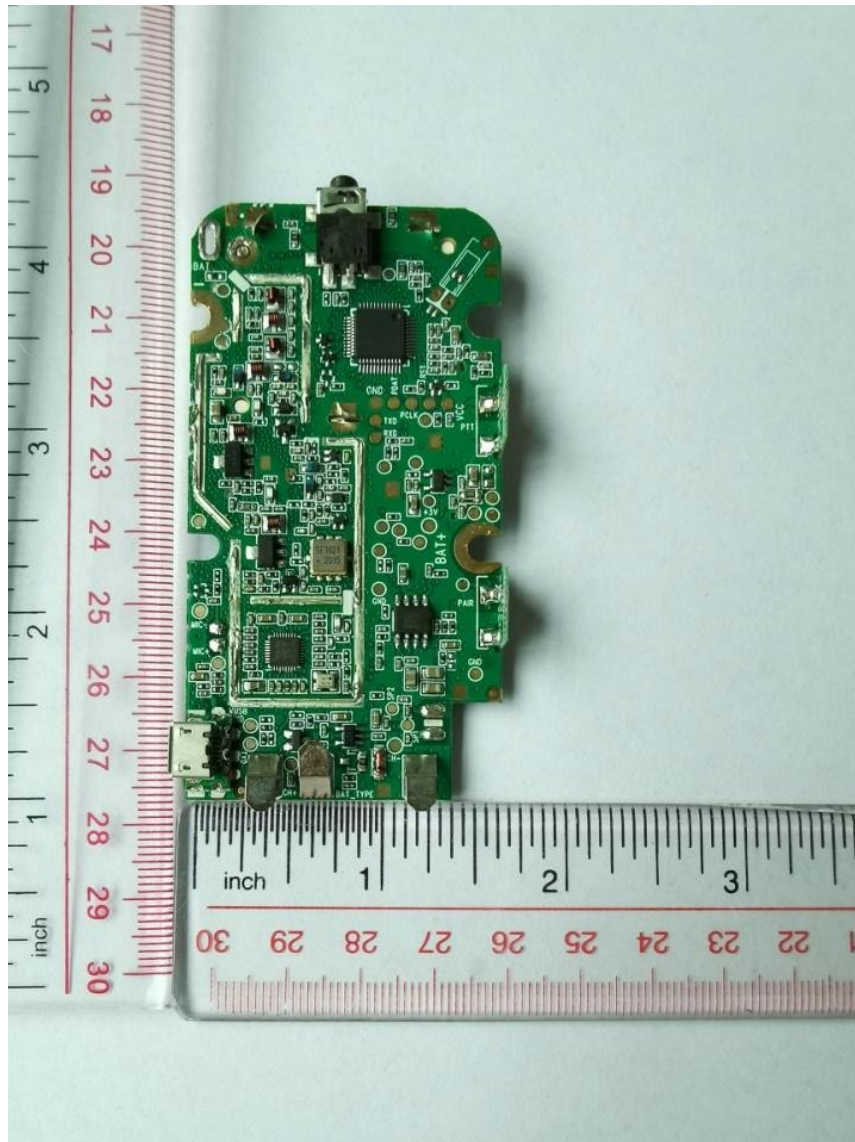
T270 Blue/ T270TP Blue/T271TP Yellow
(Note: All series using the same PCB)

EXHIBIT 9C: RF board with Shields (Back View)



T270 Blue/ T270TP Blue/T271TP Yellow
(Note: All series using the same PCB)

EXHIBIT 9D: RF board without Shields (Back View)



T270 Blue/ T270TP Blue/T271TP Yellow
(PCB with Weather IC)

EXHIBIT 9E: RF Board with Chassis and Housing (Front View)



T270/ T270TP (Blue)



T271TP

EXHIBIT 9F:Chassis and Housing (Back View)



T270 Blue/ T270TP Blue



T271TP Yellow

