

EXHIBIT 9

INTERNAL PHOTOGRAPHS

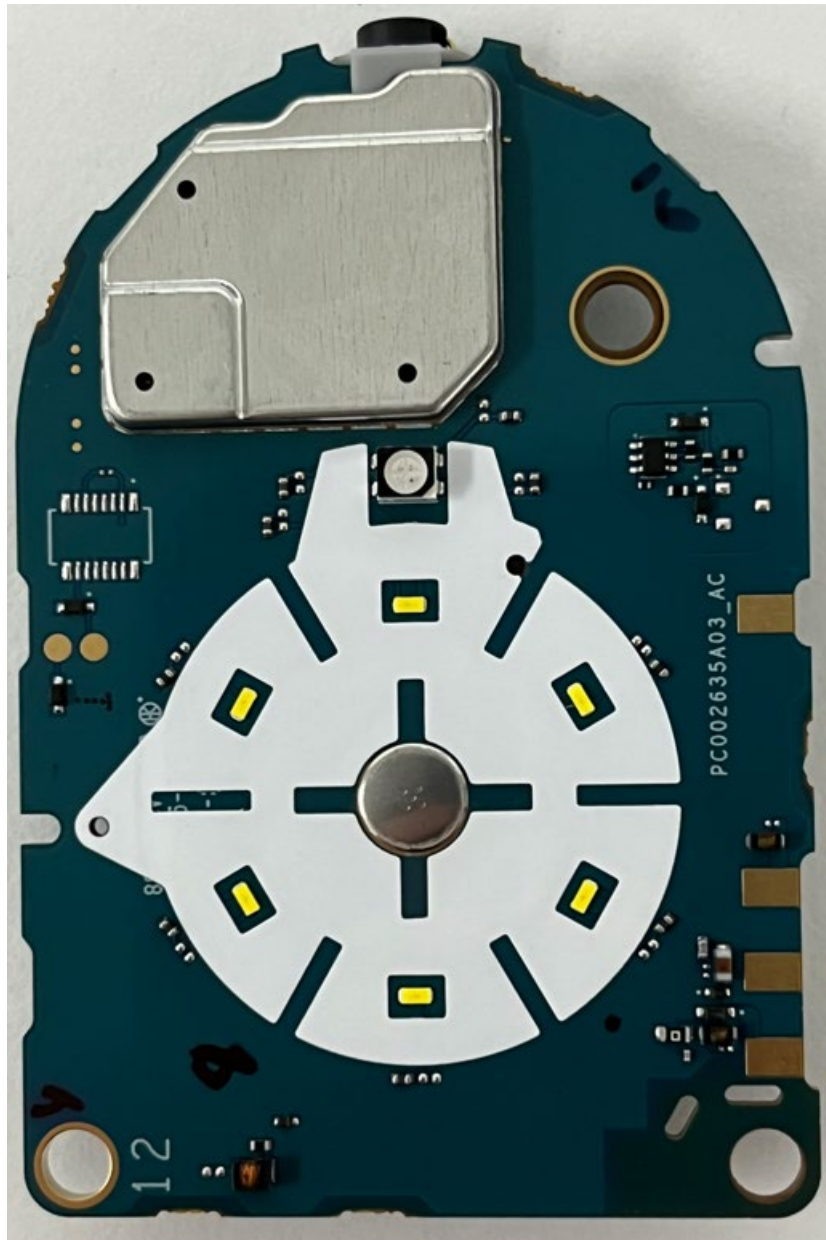
(Pursuant to FCC Part 2.1033(b)(7), 2.1033(c)(12) and RSP 100 Annex C)

The following photographs are attached.

Exhibit

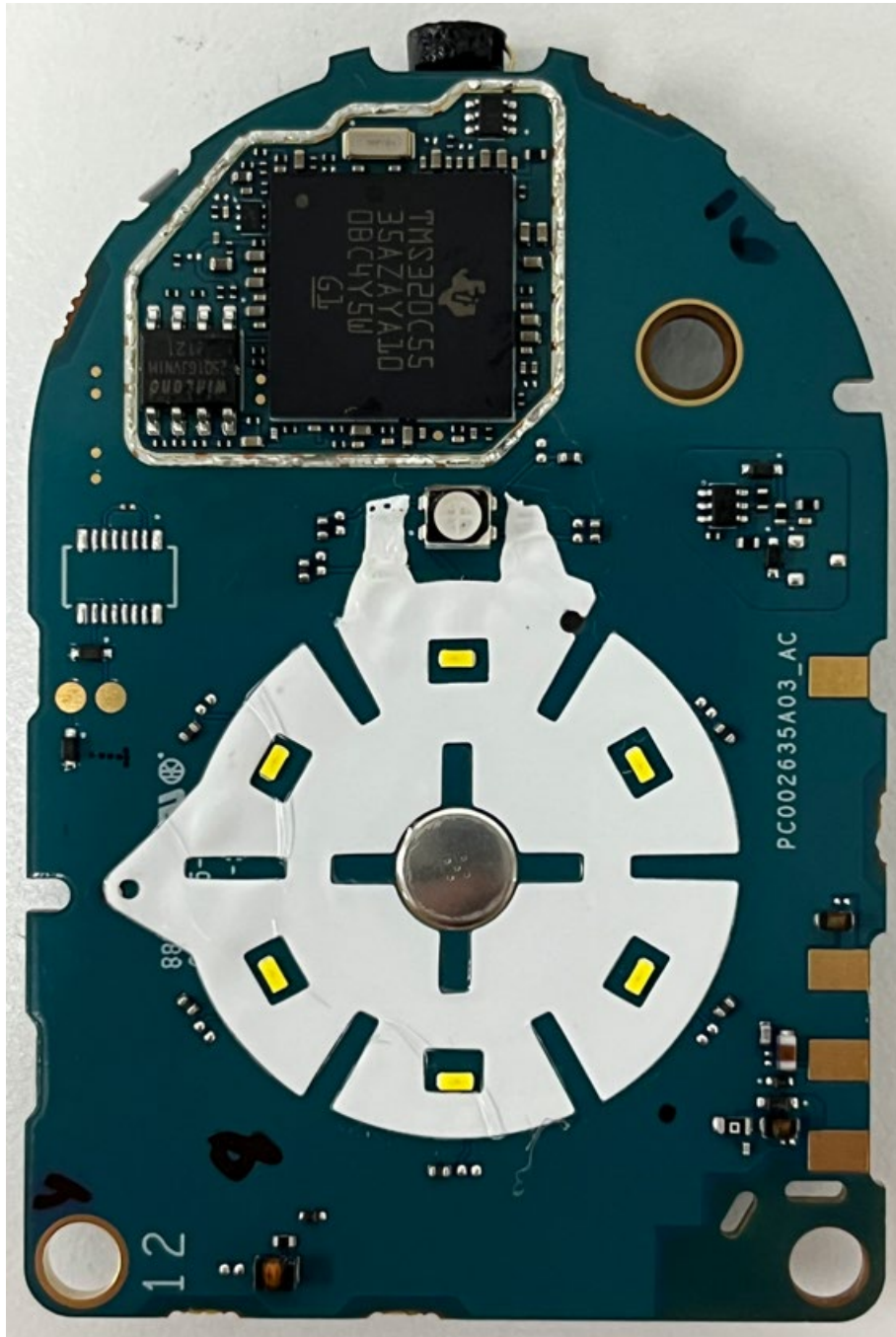
- | | | |
|----|--|----|
| 1. | RF Board with Shields (Top)
[CLP1080e, CLP1083e, CLP1010e, CLP1013e] | 9A |
| 2. | RF Board without Shields (Top)
[CLP1080e, CLP1083e, CLP1010e, CLP1013e] | 9B |
| 3. | RF Board with Shields (Bottom)
[CLP1080e, CLP1083e, CLP1010e, CLP1013e] | 9C |
| 4. | RF Board without Shields (Bottom)
[CLP1080e, CLP1083, CLP1010e, CLP1013e] | 9D |
| 5. | RF Board with chasing and housing (front side) | 9E |
| 6. | Chassis and Housing (back side) | 9F |

Exhibits 9A



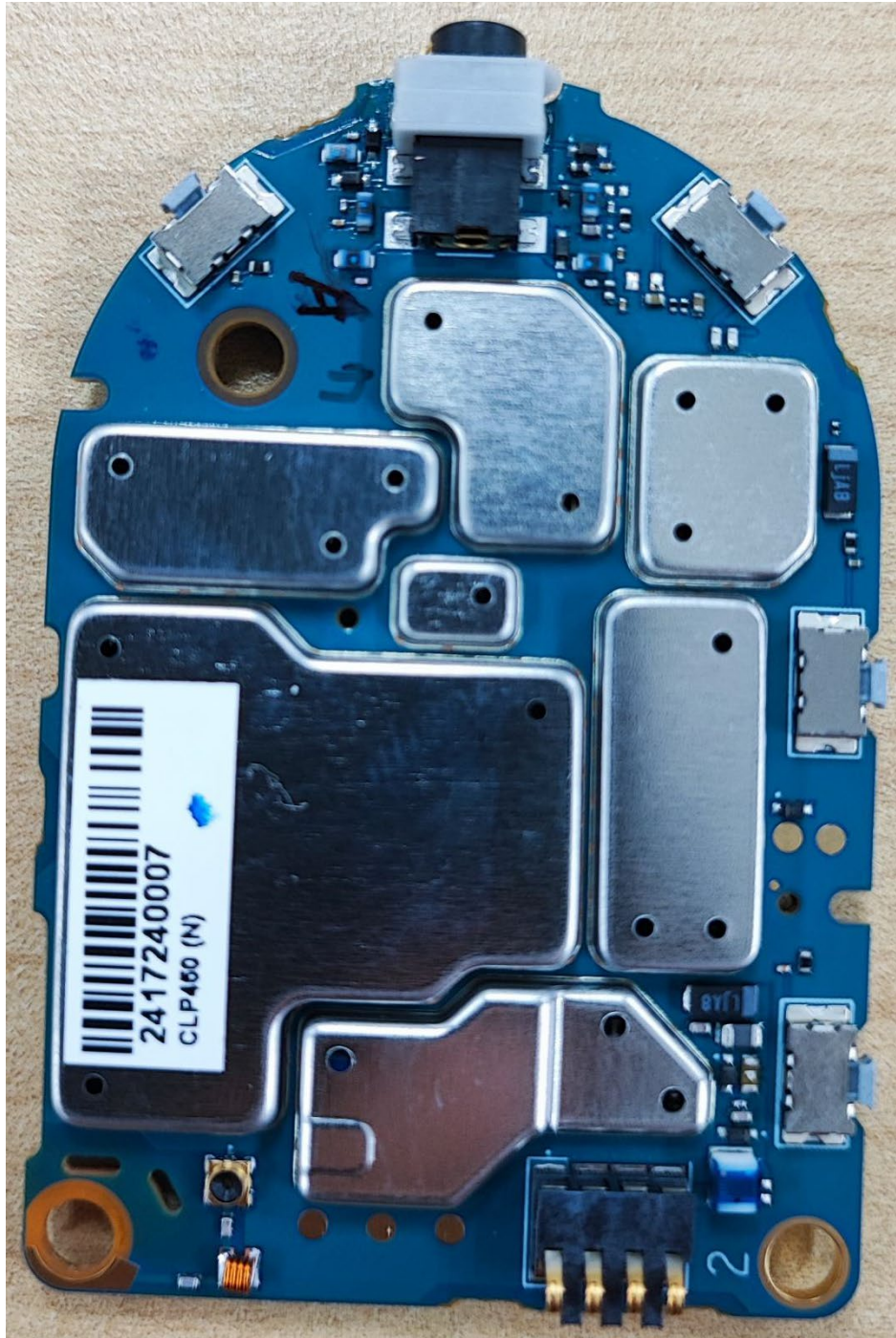
RF board with Shields (Top)
(CLP1080e, CLP1083e, CLP1010e, CLP1013e)

Exhibit 9B



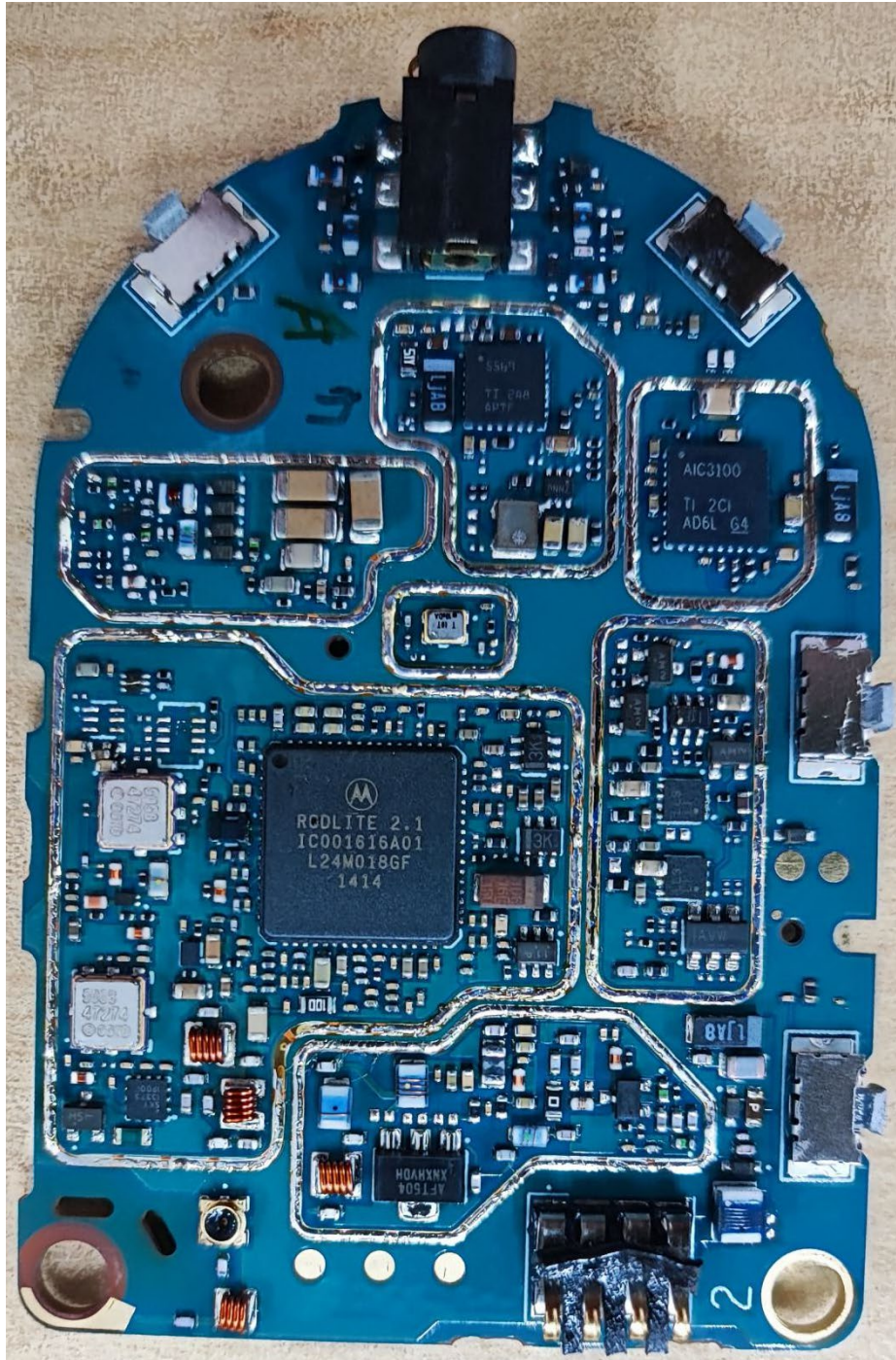
RF board without Shields (Top)
(CLP1080e, CLP1083e, CLP1010e, CLP1013e)

Exhibit 9C



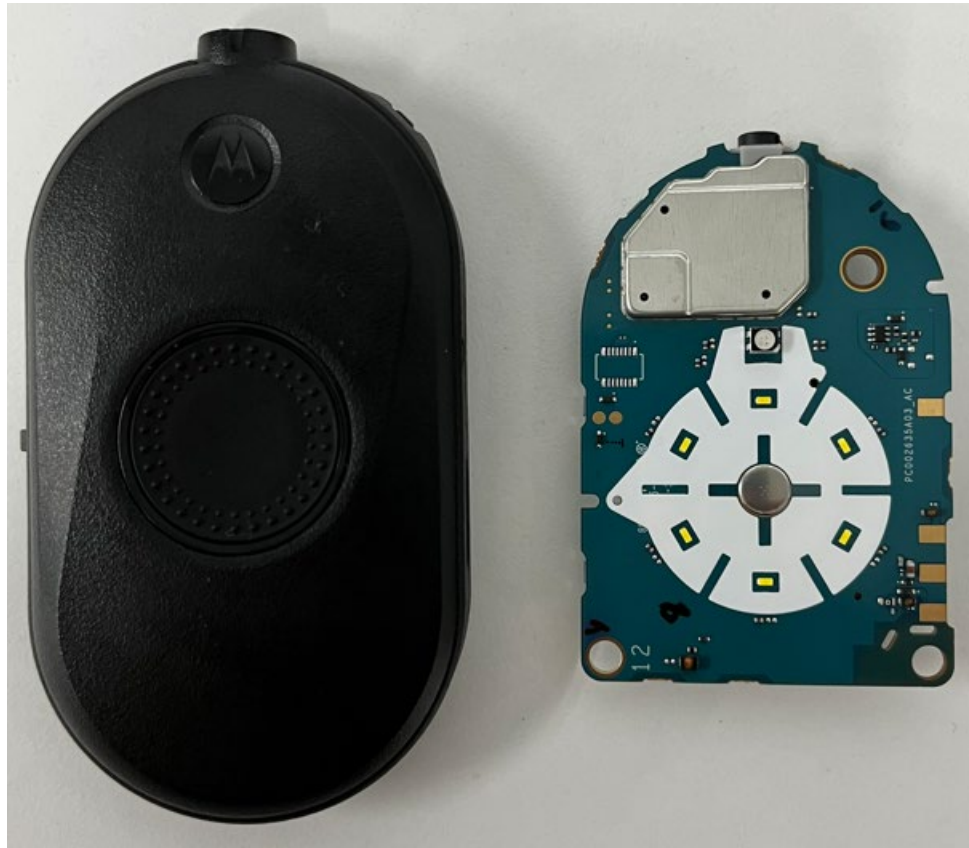
RF board with Shields (Bottom)
(CLP1080e, CLP1083e, CLP1010e, CLP1013e)

Exhibit 9D



RF board without Shields (Bottom)
(CLP1080e, CLP1083e, CLP1010e, CLP1013e)

Exhibit 9E



RF board with housing (front side)
(CLP1080e, CLP1083e, CLP1010e, CLP1013e)

Exhibit 9F



Chassis and Housing (Back side)
(CLP1080e, CLP1083e, CLP1010e, CLP1013e)