

**EXHIBIT 9**

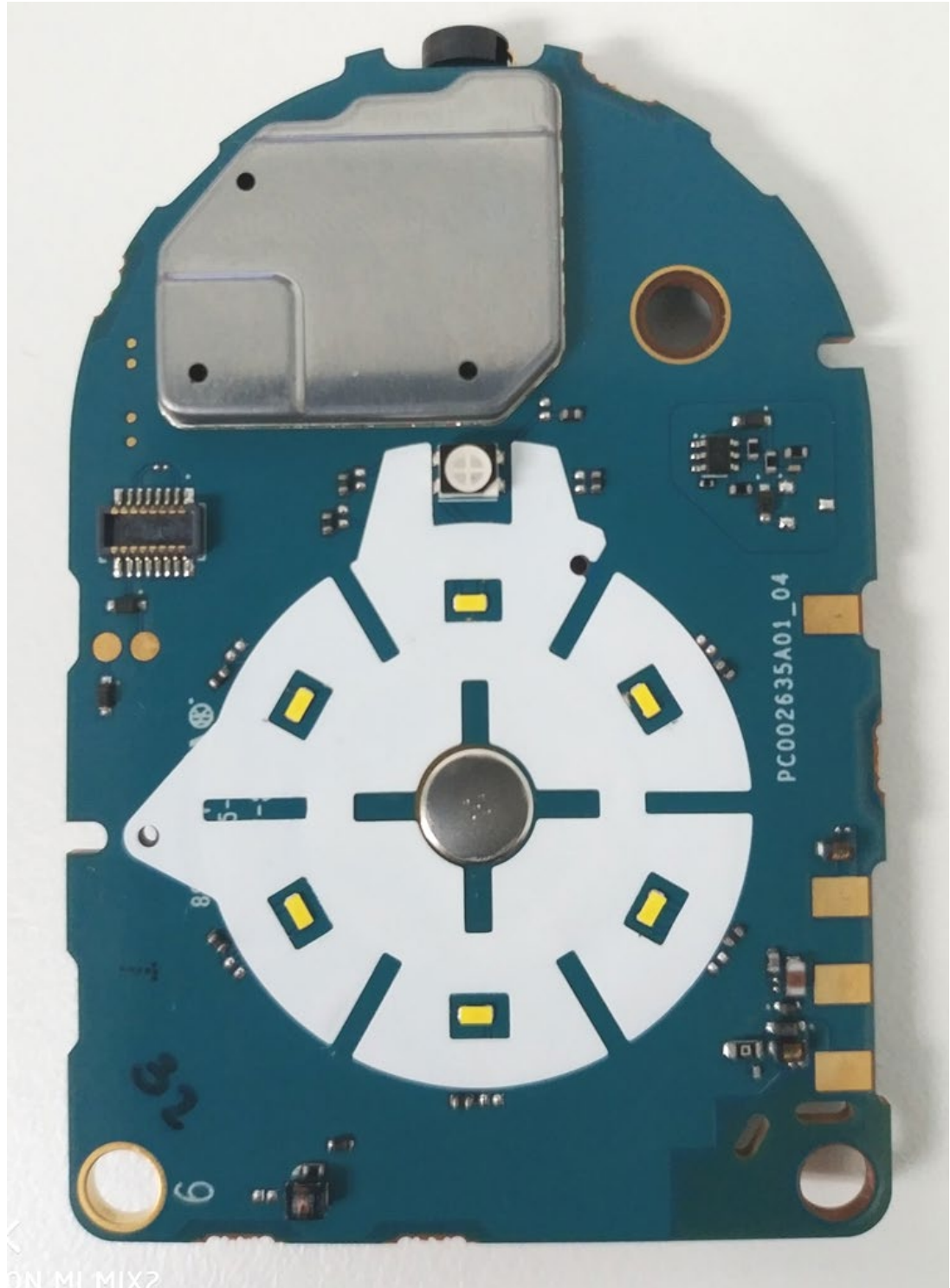
**INTERNAL PHOTOGRAPHS**

(Pursuant to FCC Part 2.1033(b)(7), 2.1033(c)(12) and RSP 100 Annex C)

The following photographs are attached.

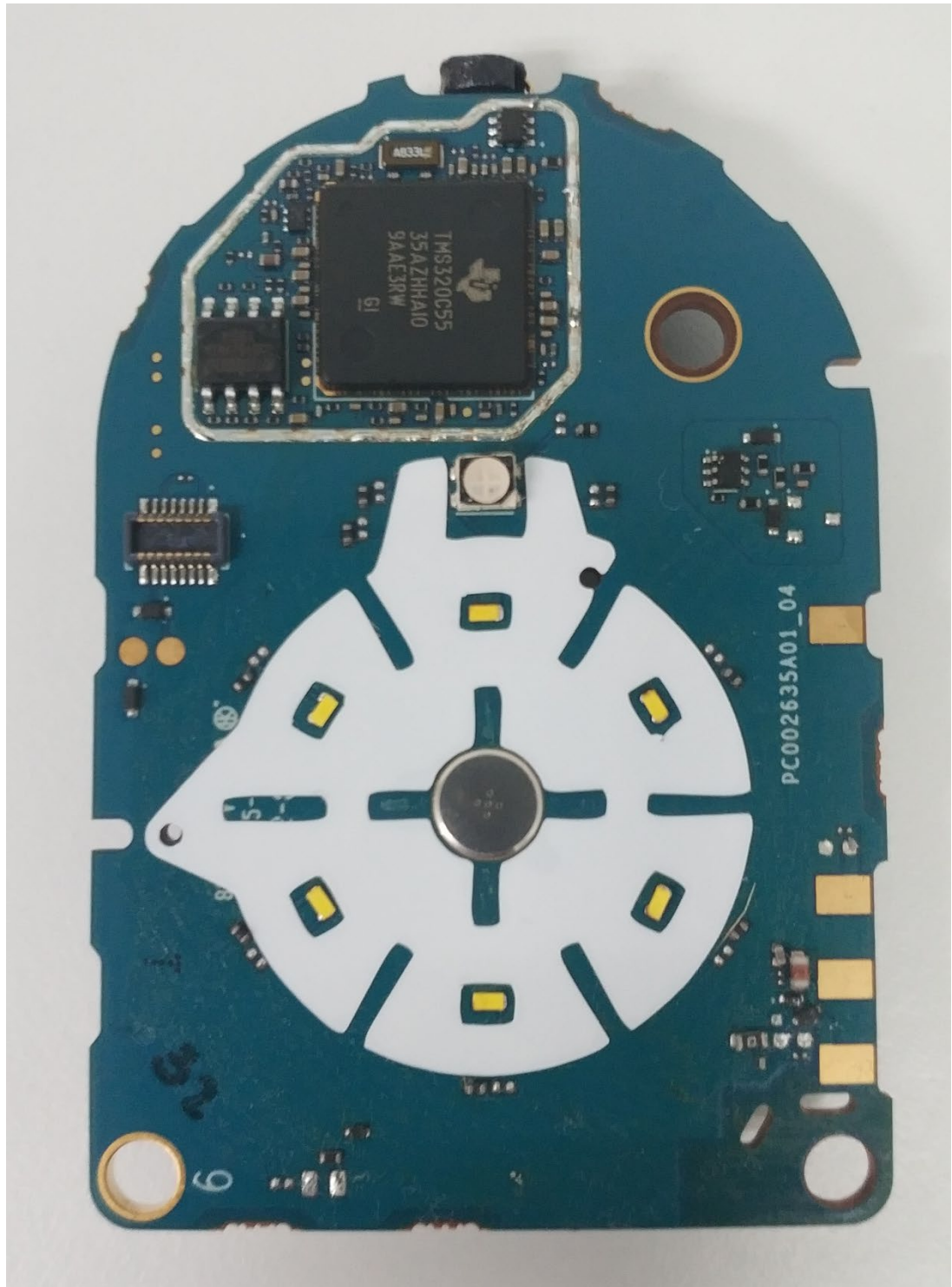
	<u>Exhibit</u>
1. RF Board with Shields (Top) [CLP1080e, CLP1083e, CLP1010e, CLP1013e]	9A
1. RF Board without Shields (Top) [CLP1080e, CLP1083e, CLP1010e, CLP1013e]	9B
2. RF Board with Shields (Bottom) [CLP1080e, CLP1083e, CLP1010e, CLP1013e]	9C
3. RF Board without Shields (Bottom) [CLP1080e, CLP1083, CLP1010e, CLP1013e]	9D
4. RF Board with chasing and housing (front side)	9E
5. Chassis and Housing (back side)	9F
6. Exploded View of Radio (CLP1080e, CLP1083e, CLP1010e, CLP1013e)	9G

**Exhibits 9A**



RF board with Shields (Top)  
(CLP1080e, CLP1083e, CLP1010e, CLP1013e)

**Exhibit 9B**



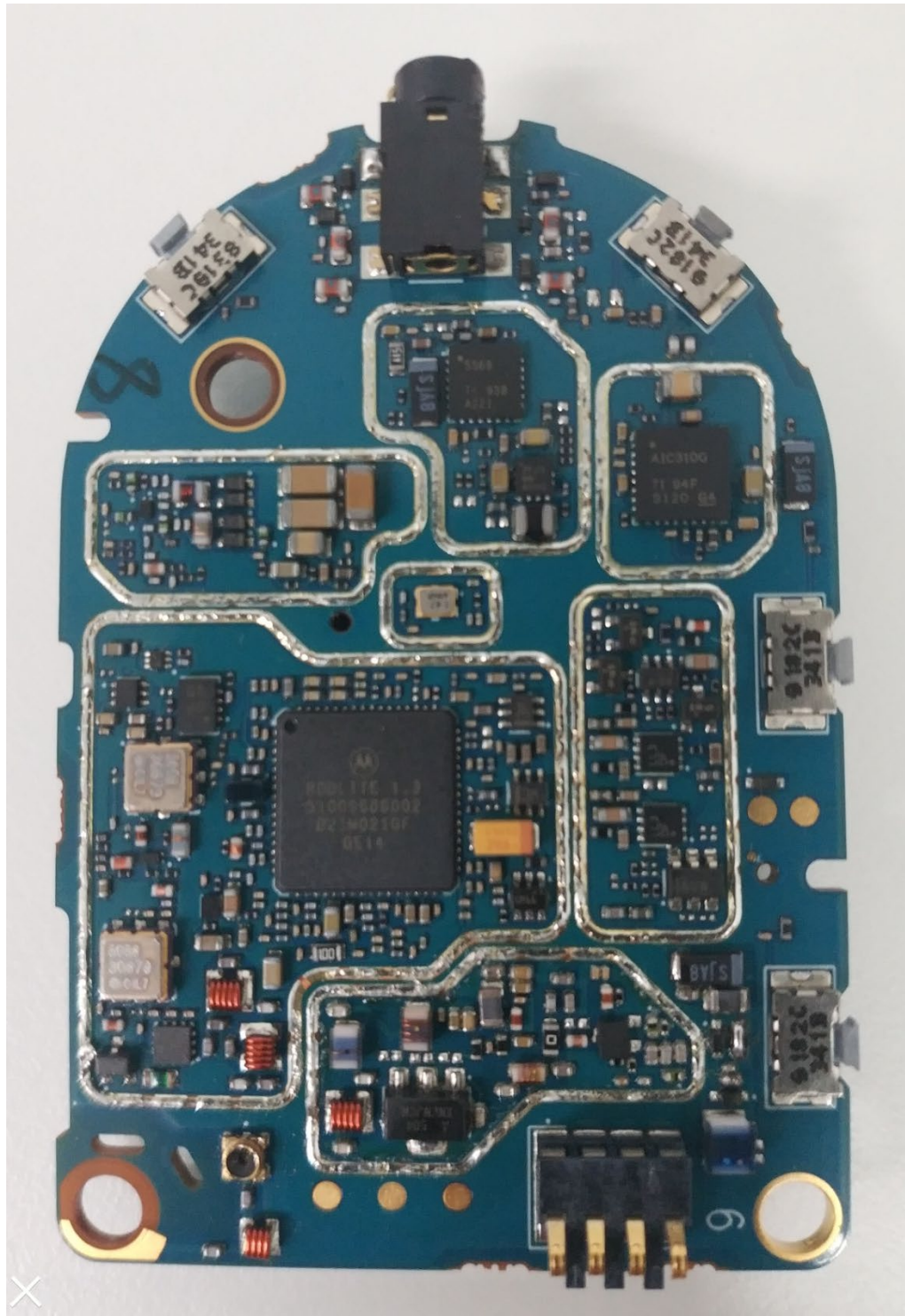
RF board without Shields (Top)  
(CLP1080e, CLP1083e, CLP1010e, CLP1013e)

**Exhibit 9C**



RF board with Shields (Bottom)  
(CLP1080e, CLP1083e, CLP1010e, CLP1013e)

**Exhibit 9D**



RF board without Shields (Bottom)  
(CLP1080e, CLP1083e, CLP1010e, CLP1013e)

**Exhibit 9E**



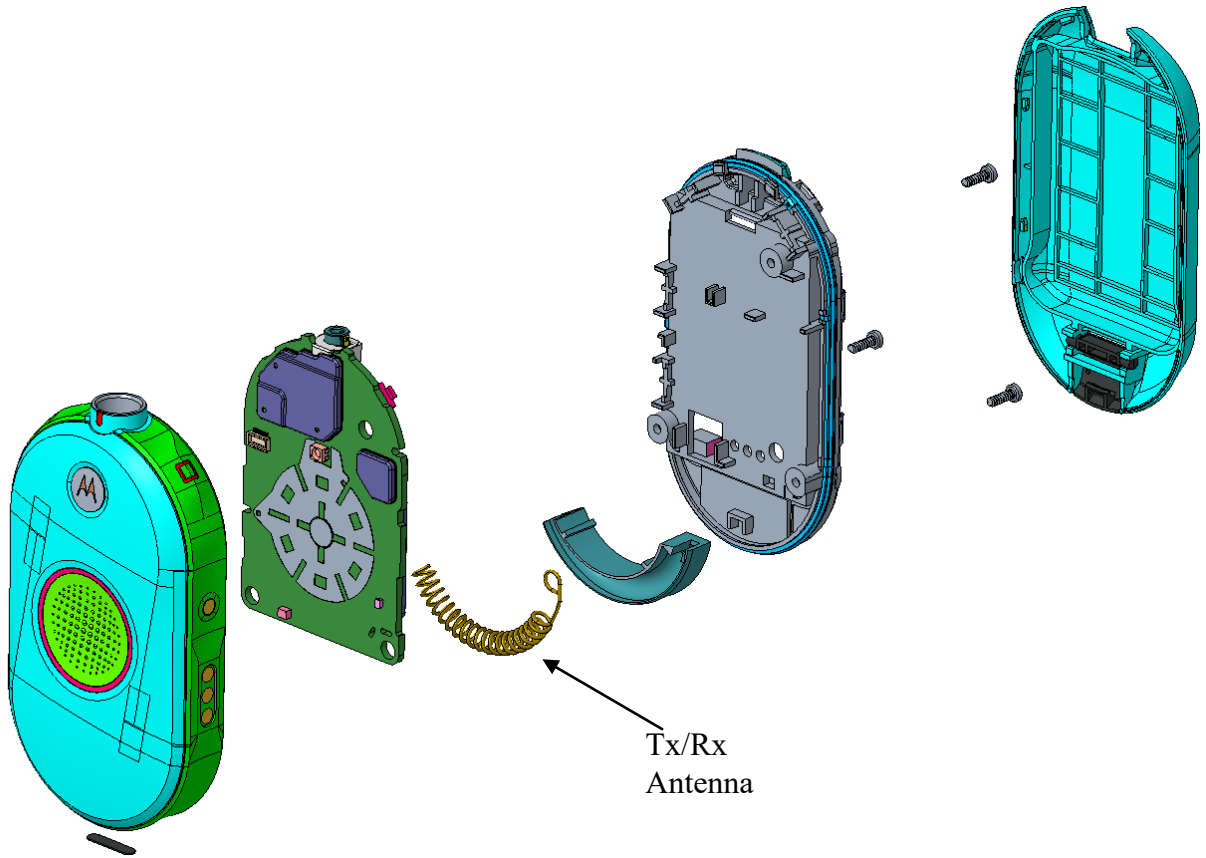
RF board with housing (front side)  
(CLP1080e, CLP1083e, CLP1010e, CLP1013e)

**Exhibit 9F**



Chassis and Housing (Back side)  
(CLP1080e, CLP1083e, CLP1010e, CLP1013e)

**Exhibit 9G**



Exploded View of Radio  
(Applicable for all Radio CLP1080e, CLP1083e, CLP1010e, CLP1013e)