

EXHIBIT 9

Internal Photographs

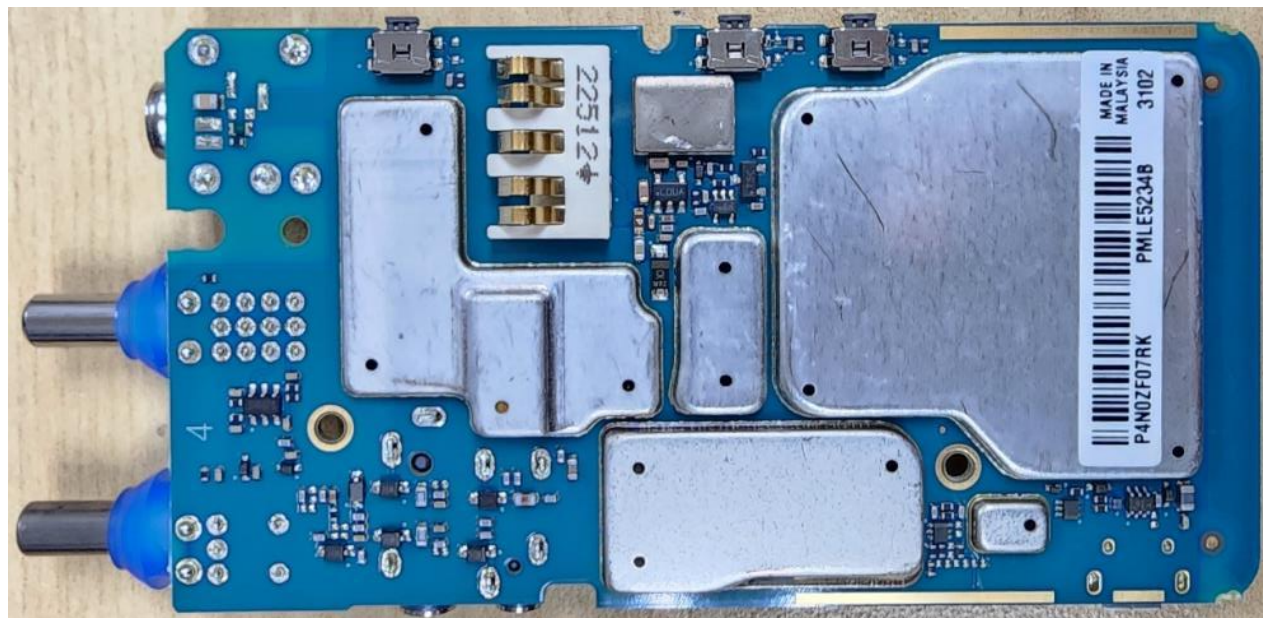
(Pursuant to FCC Part 2.1033(b)(7), 2.1033(c)(12) and RSP 100 Annex C)

The following photographs are attached.

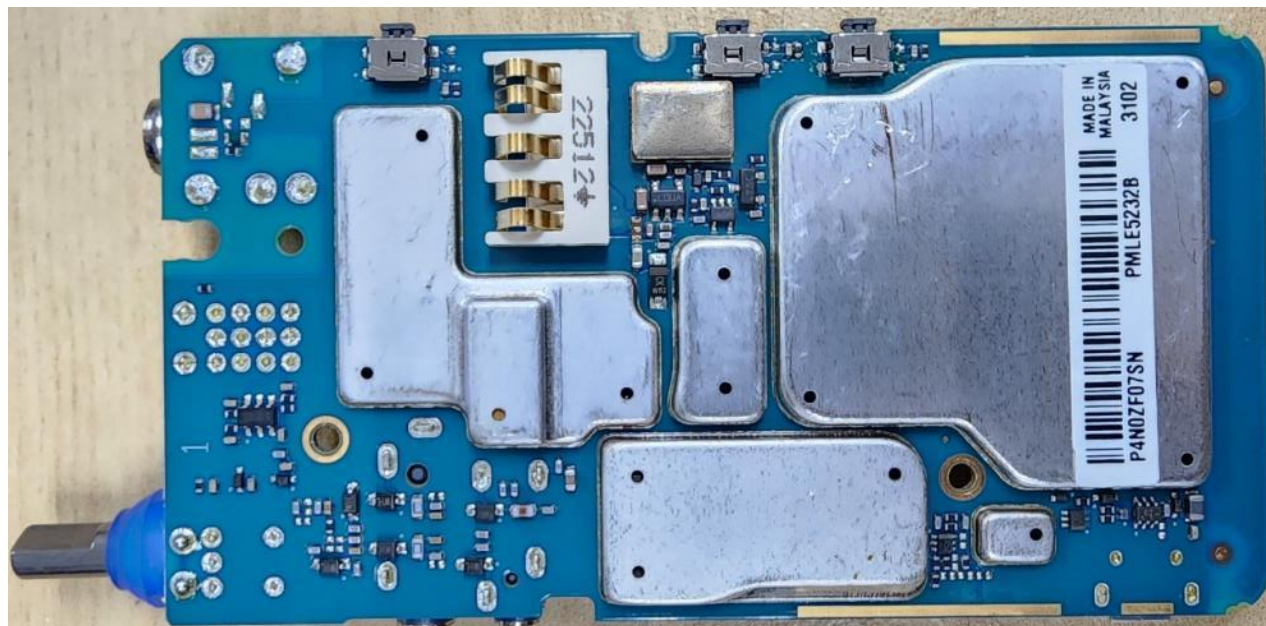
Exhibit

- | | | |
|----|--|----|
| 1. | RF board <u>with</u> Shields (Top) | 9A |
| 2. | RF board <u>without</u> Shields (Top) | 9B |
| 3. | RF board <u>with</u> Shields (Bottom) | 9C |
| 4. | RF board <u>without</u> Shields (Bottom) | 9D |
| 5. | RF boards <u>with</u> chassis and housing for (Front Side) | 9E |
| 6. | Chassis and housing (Back Side) | 9F |
| 7. | Exploded View of Radio | 9G |

Exhibit 9A – RF board with Shields (Top)

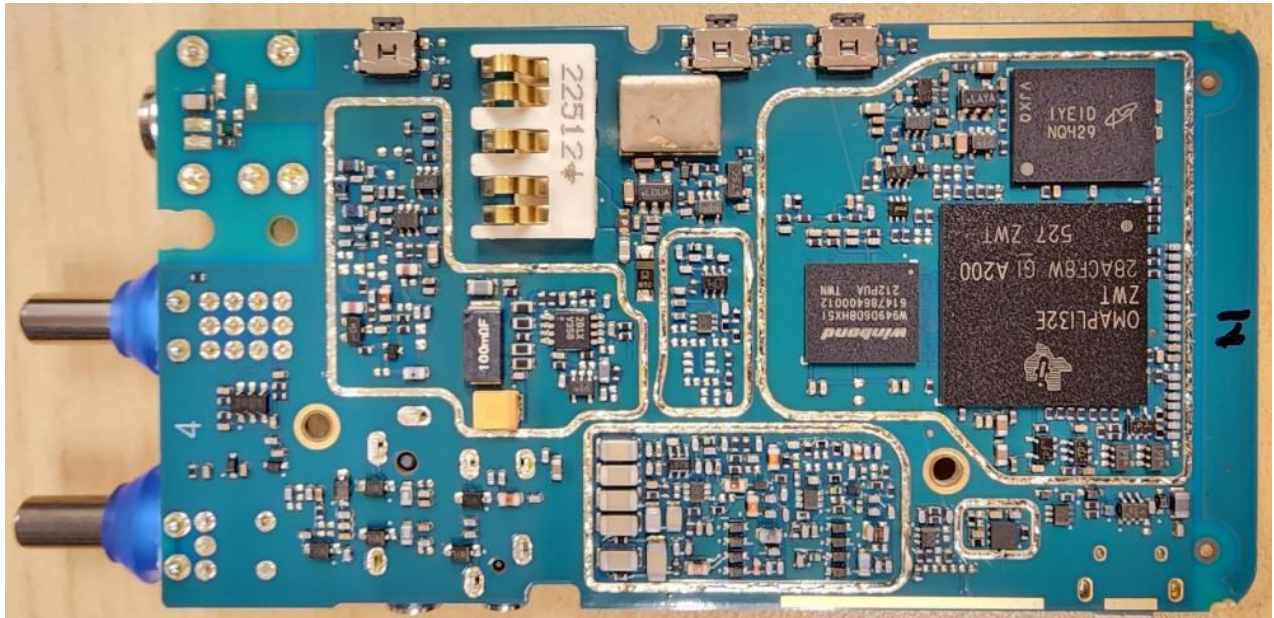


RF board with Shields (Top) of Non Keypad (NKP) model
LAH87YDC9JA2AN / AAH87YDC9JA2AN / AAH87YDC9JC2AN

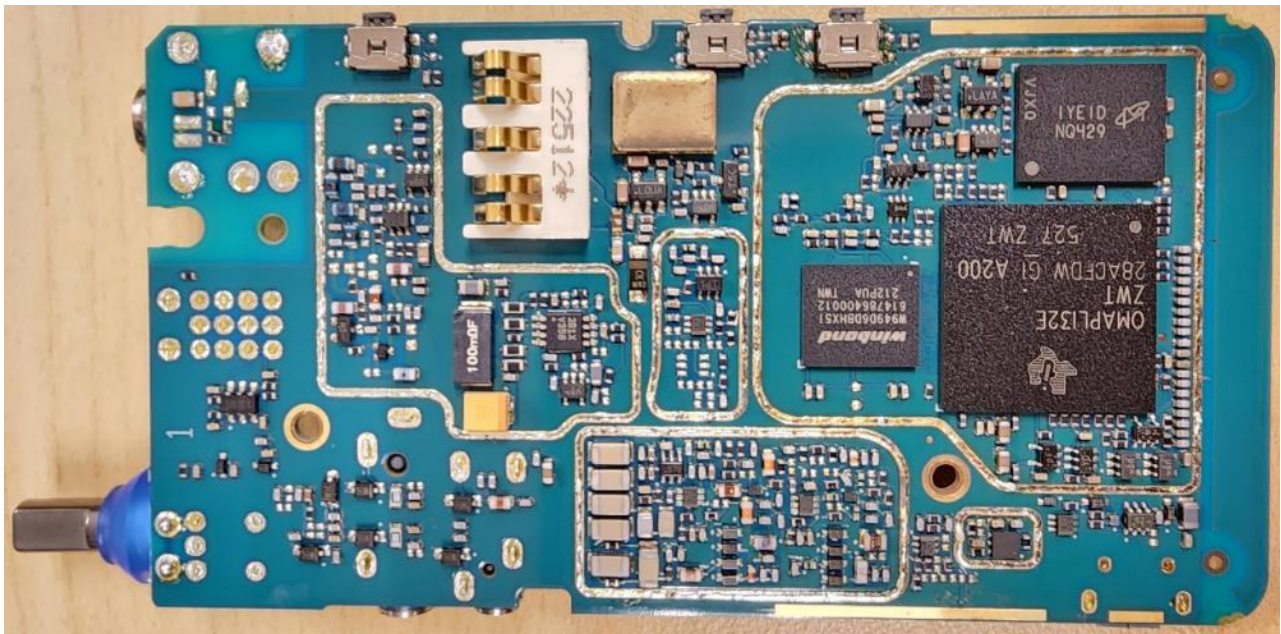


RF board with Shields (Top) of Limited Keypad (LKP) / Full Keypad (FKP) model
AAH87YDH9JA2AN / AAH87YDF9JA2AN / AAH87YDH9JC2AN

Exhibit 9B – RF board without Shields (Top)

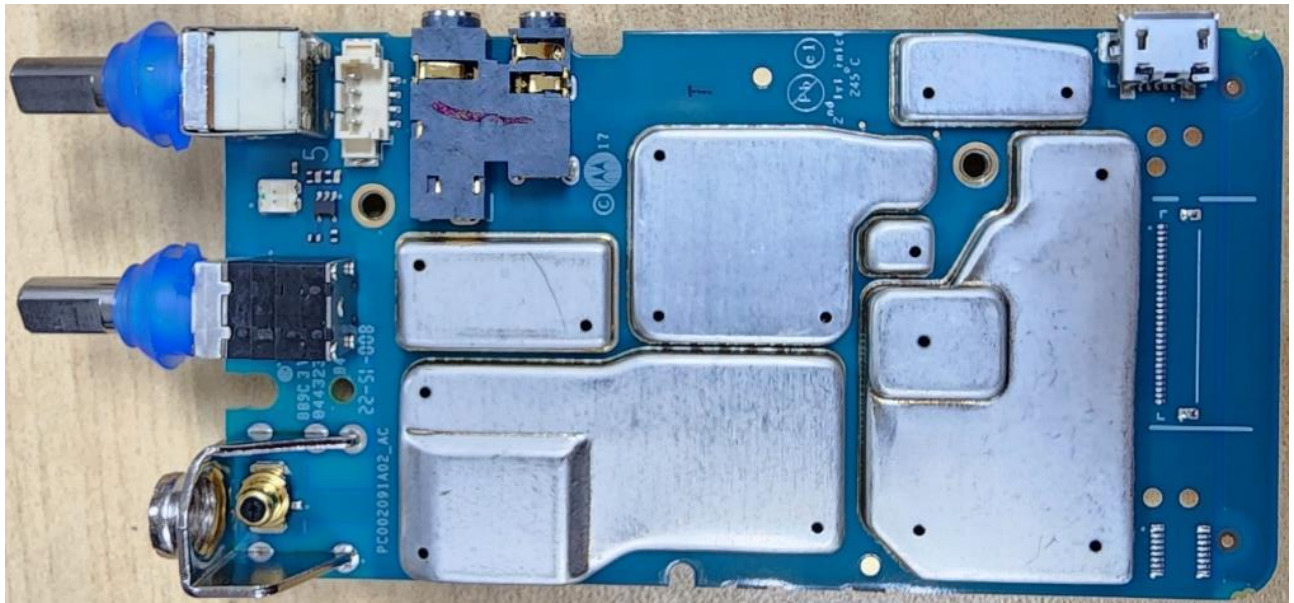


RF board without Shields (Top) of Non Keypad (NKP) model
LAH87YDC9JA2AN / AAH87YDC9JA2AN / AAH87YDC9JC2AN



RF board without Shields (Top) of Limited Keypad (LKP) / Full Keypad (FKP) model
AAH87YDH9JA2AN / AAH87YDF9JA2AN / AAH87YDH9JC2AN

Exhibit 9C – RF board with Shields (Bottom)

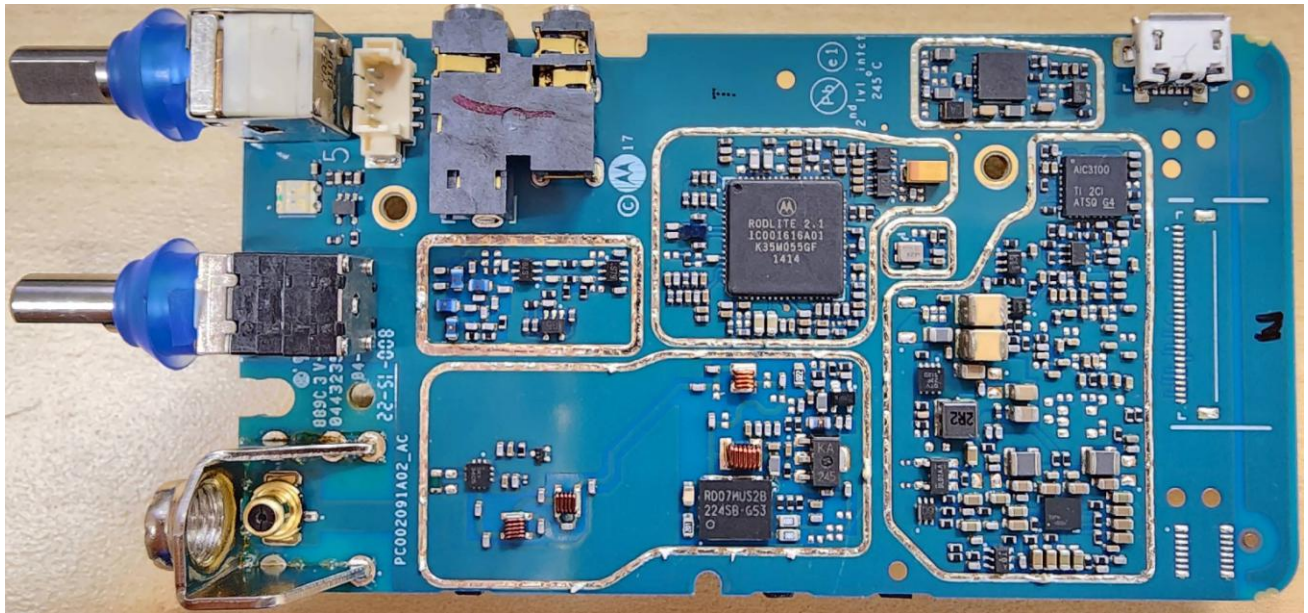


**RF board with Shields (Bottom) of Non Keypad (NKP) model
LAH87YDC9JA2AN / AAH87YDC9JA2AN / AAH87YDC9JC2AN**

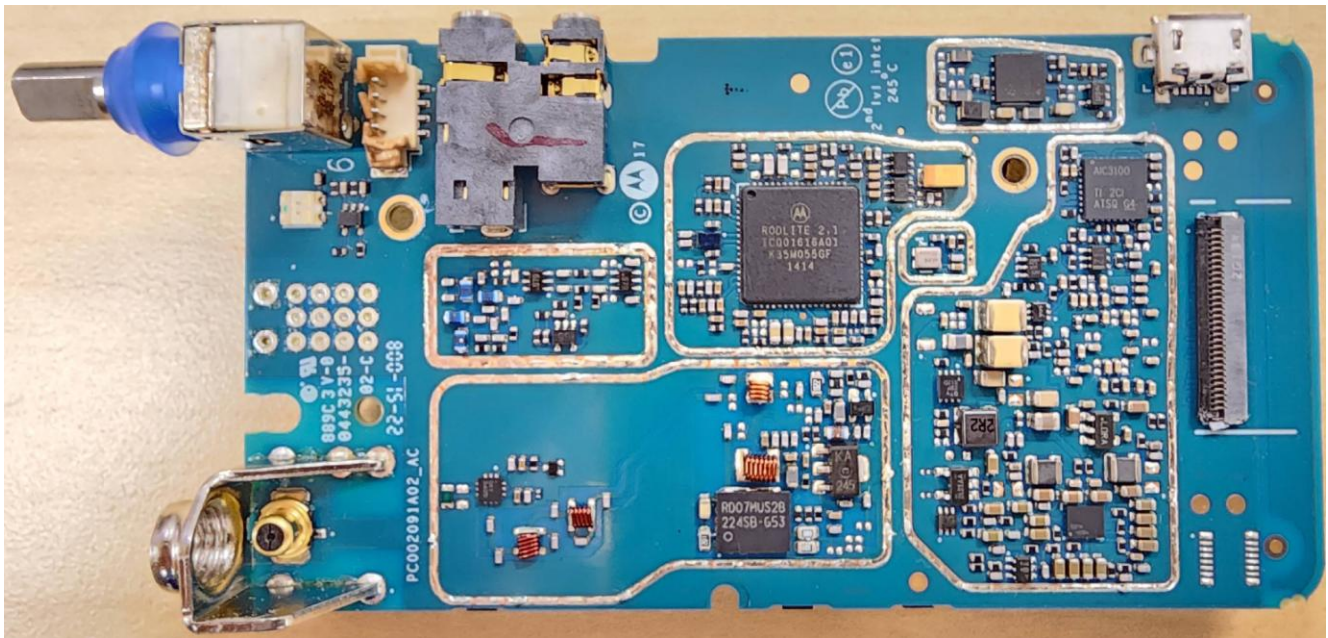


**RF board with Shields (Bottom) of Limited Keypad (LKP) / Full Keypad (FKP) model
AAH87YDH9JA2AN / AAH87YDF9JA2AN / AAH87YDH9JC2AN**

Exhibit 9D – RF Board without Shields (Bottom)



**RF board without Shields (Bottom) of Non Keypad (NKP) model
LAH87YDC9JA2AN / AAH87YDC9JA2AN / AAH87YDC9JC2AN**



**RF board without Shields (Bottom) of Limited Keypad (LKP) / Full Keypad (FKP) model
AAH87YDH9JA2AN / AAH87YDF9JA2AN / AAH87YDH9JC2AN**

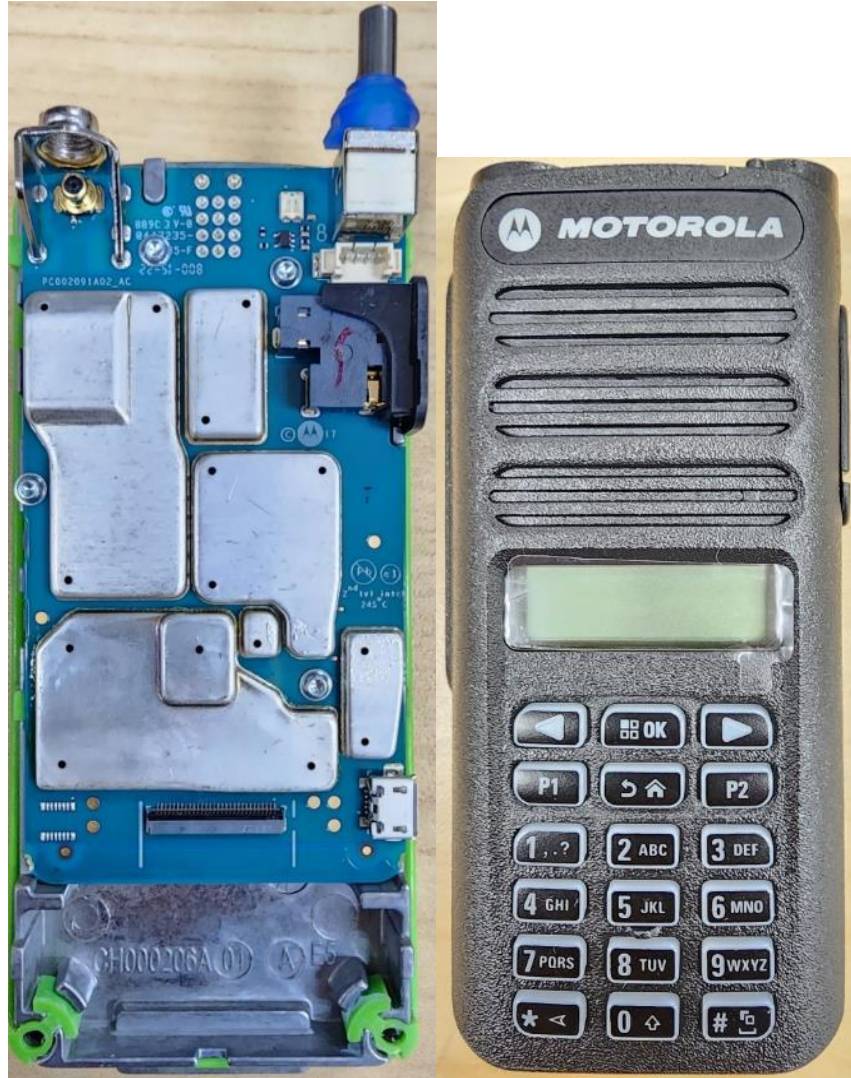
Exhibit 9E – RF board with chassis and housing (front side)



**RF board with chassis and housing (front side) of Non Keypad (NKP) model
LAH87YDC9JA2AN / AAH87YDC9JA2AN / AAH87YDC9JC2AN**



**RF board with chassis and housing (front side) of Limited Keypad (LKP) model
AAH87YDH9JA2AN / AAH87YDH9JC2AN**



RF board with chassis and housing (front side) of Full Keypad (FKP) model AAH87YDF9JA2AN

Exhibit 9F – Chassis and housing (back side)



**Chassis and Housing (Back side) of Non Keypad (NKP) model
LAH87YDC9JA2AN / AAH87YDC9JA2AN / AAH87YDC9JC2AN**

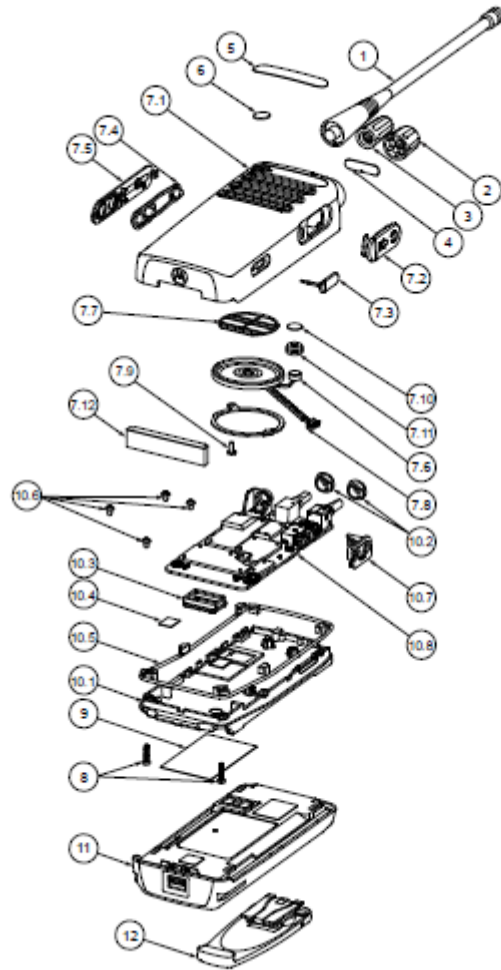


Chassis and Housing (Back side) of Limited Keypad (LKP) / Full Keypad (FKP) model AAH87YDH9JA2AN / AAH87YDF9JA2AN



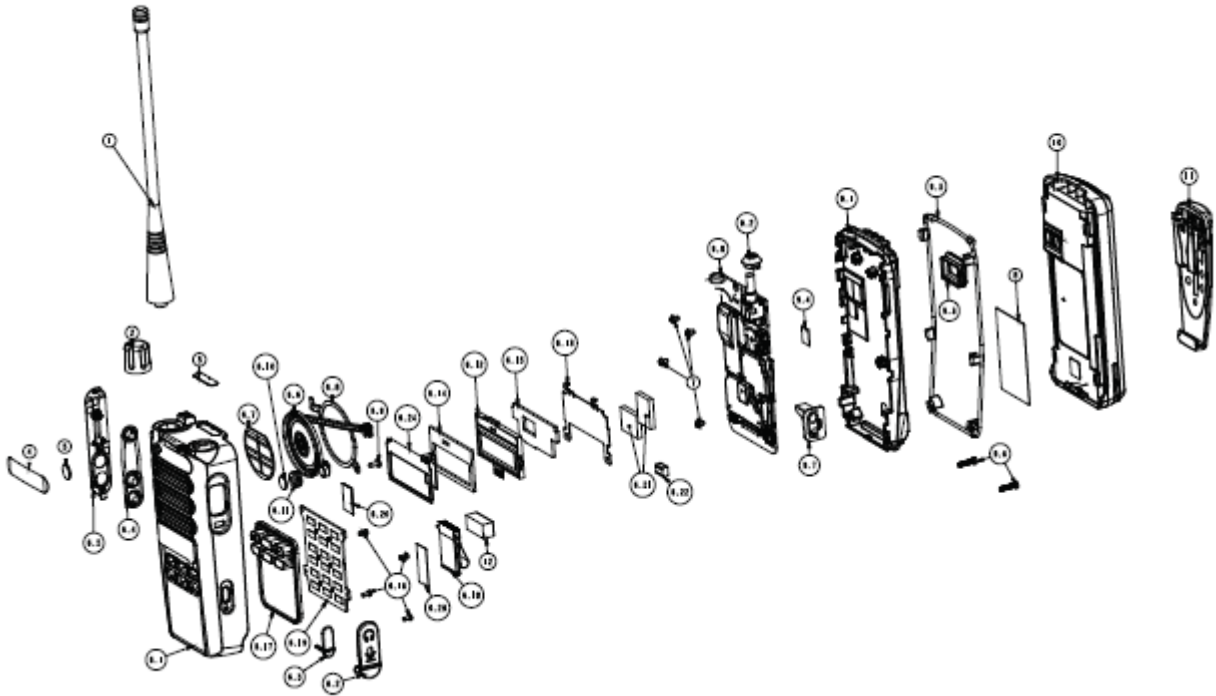
**Chassis and Housing (Back side) of Limited Keypad (LKP)
AAH87YDH9JC2AN**

Exhibit 9G – Exploded View of radio



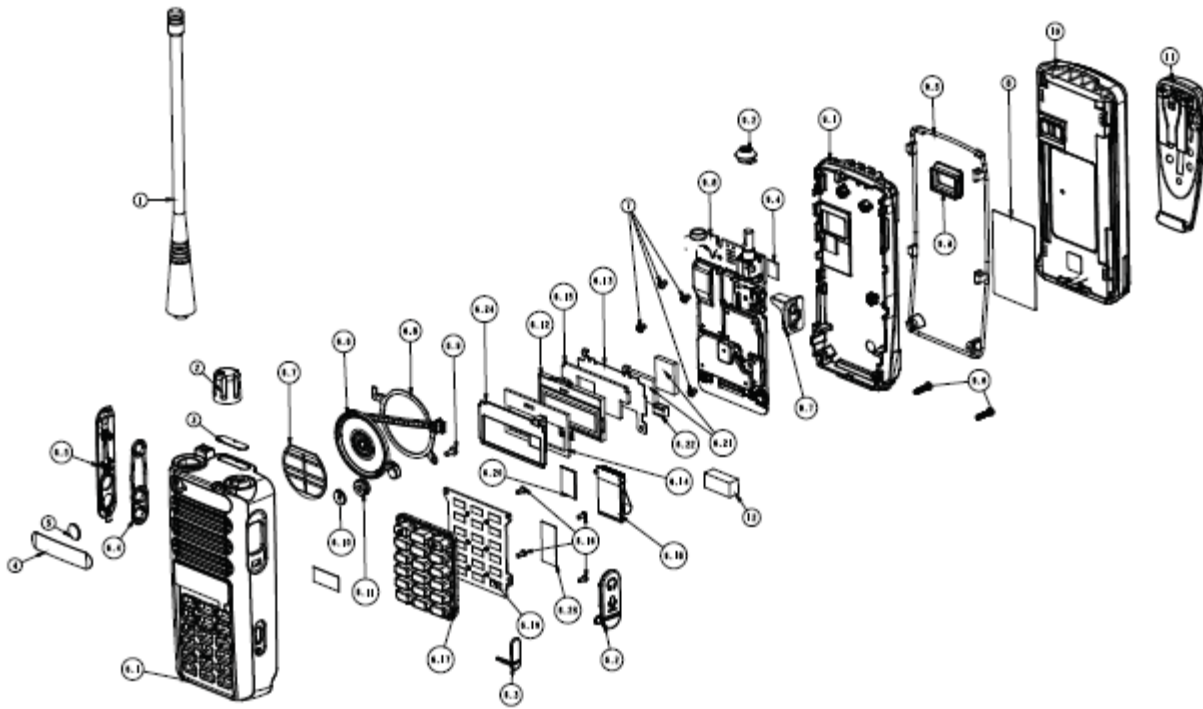
Exploded View of Non Keypad (NKP) model
LAH87YDC9JA2AN / AAH87YDC9JA2AN / AAH87YDC9JC2AN

Limited Keypad Exploded View



Exploded View of Limited Keypad (LKP) model
AAH87YDH9JA2AN / AAH87YDH9JC2AN

Full Keypad Exploded View



**Exploded View of Full Keypad (FKP) model
AAH87YDF9JA2AN**

***** END *****