

**EXHIBIT 9**

**INTERNAL PHOTOGRAPHS**

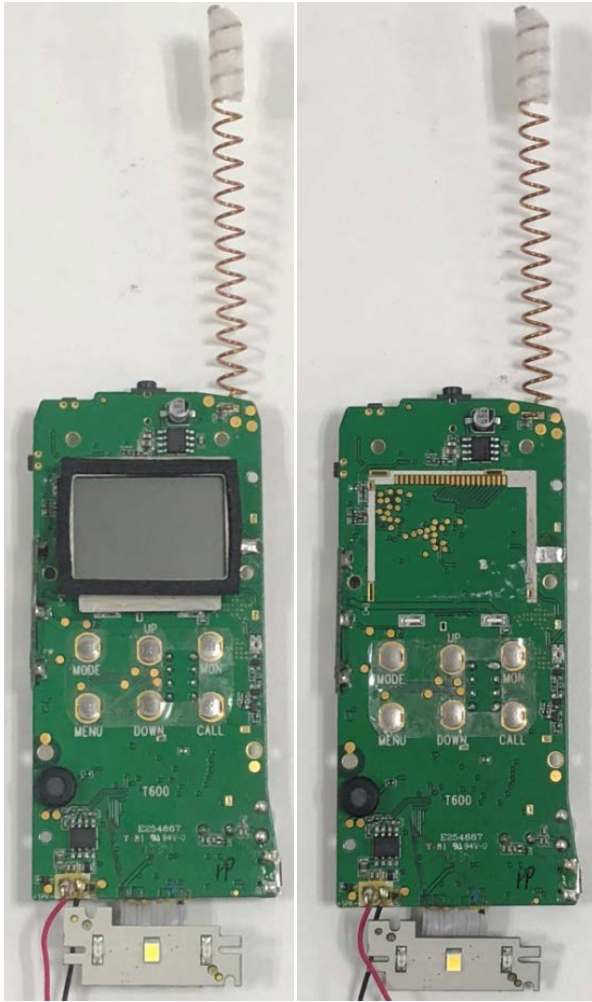
(Pursuant to FCC Part 2.1033(b)(7), 2.1033(c)(12) and RSP 100 Sec 8.3)

The following photographs are attached.

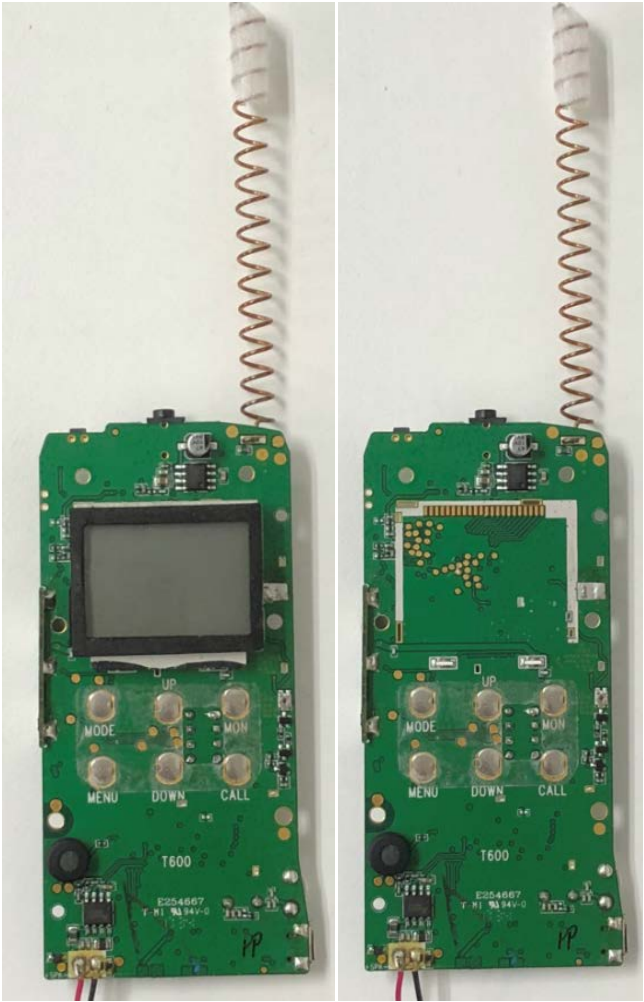
**Exhibit**

- |    |  |    |
|----|--|----|
| 1. | RF board <u>with &amp; without</u> Shields (Top).    | 9A |
| 2. | RF board <u>with &amp; without</u> Shields (Bottom). | 9B |
| 3. | RF board with chassis and housing (front side).      | 9C |
| 4. | RF Board with chassis and housing (back side).       | 9D |

**EXHIBIT 9A - RF board with & without Shields (Top)**

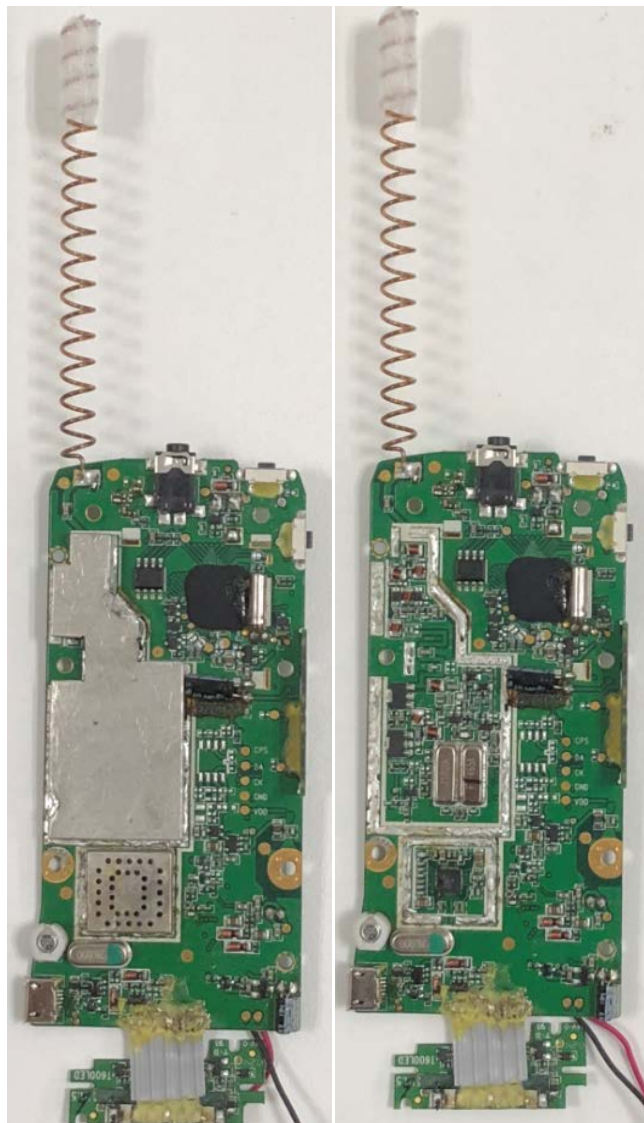


T6B22201GWRAAW & T6B22201GWCAAG

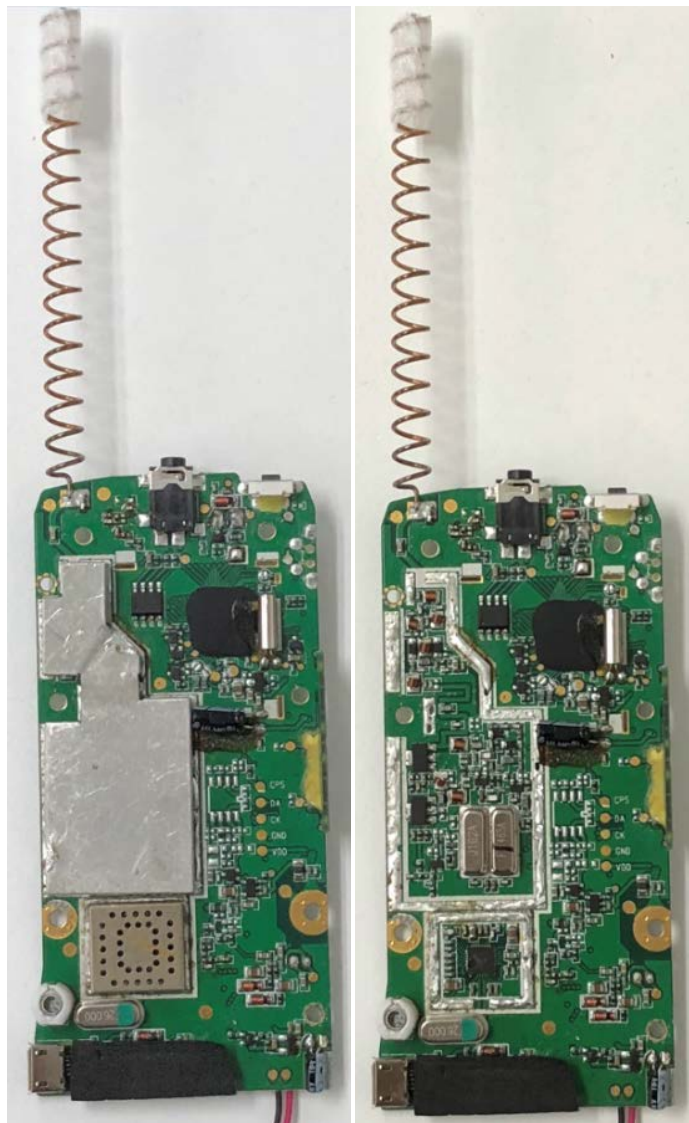


T5B22201EWRAAW

**EXHIBIT 9B - RF board with & without Shields (Bottom)**



T6B22201GWRAAW & T6B22201GWCAAG



T5B22201EWRAAW

**EXHIBIT 9C - RF board with chassis and housing (front side)**



T6B22201GWRAAW & T6B22201GWCAAG



T5B22201EWRAAW

EXHIBIT 9D – RF Board and chassis and Housing (back side)

T6B22201GWRAAW



T6B22201GWCAAG



T5B22201EWRAAW

