

**EXHIBIT 9**

**INTERNAL PHOTOGRAPHS**

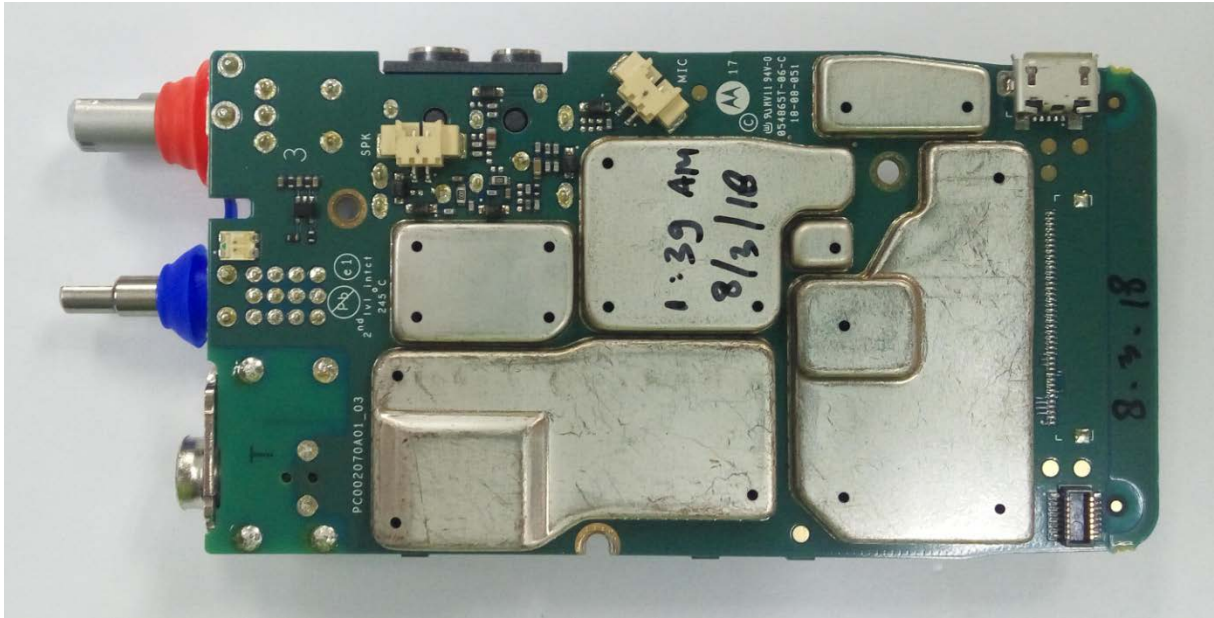
(Pursuant to FCC Part 2.1033(b)(7), 2.1033(c)(14) and RSP 100 Sec 4)

The following photographs are attached.

Exhibit

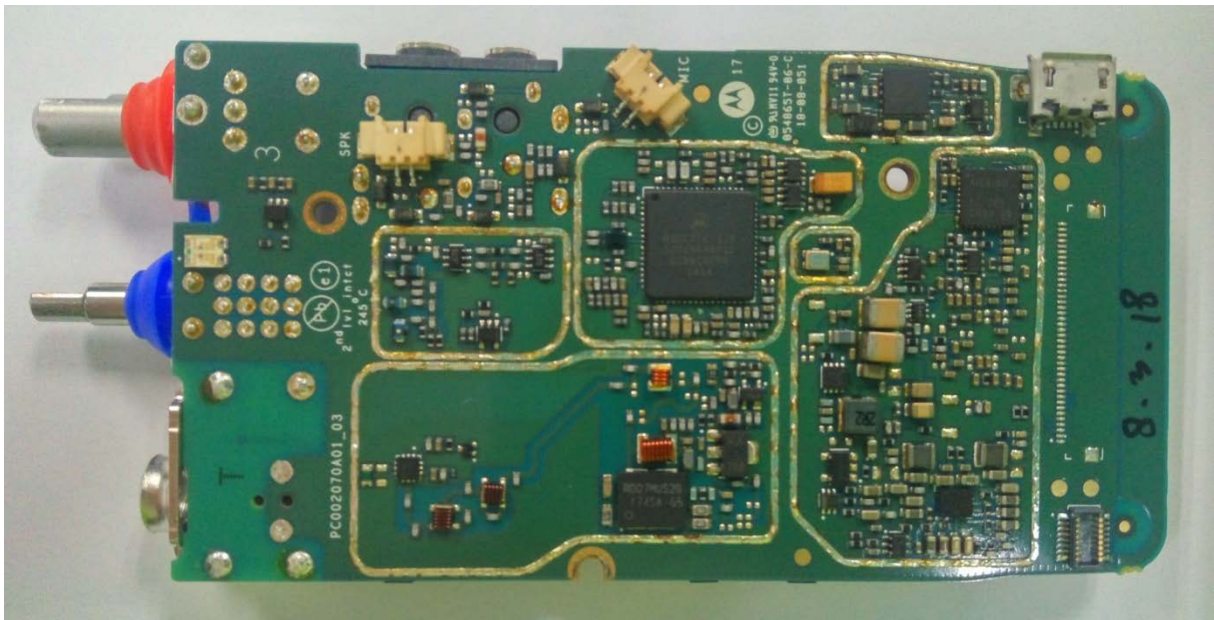
- |   |    |
|---|----|
| 1. RF board with Shields (Top).                   | 9A |
| 2. RF board without Shields (Top).                | 9B |
| 3. RF board with Shields (Bottom).                | 9C |
| 4. RF board without Shields (Bottom).             | 9D |
| 5. RF board with chassis and housing (front side) | 9E |
| 6. Chassis and housing (back side)                | 9F |
| 7. Exploded View of radio                         | 9G |

**Exhibits 9A**



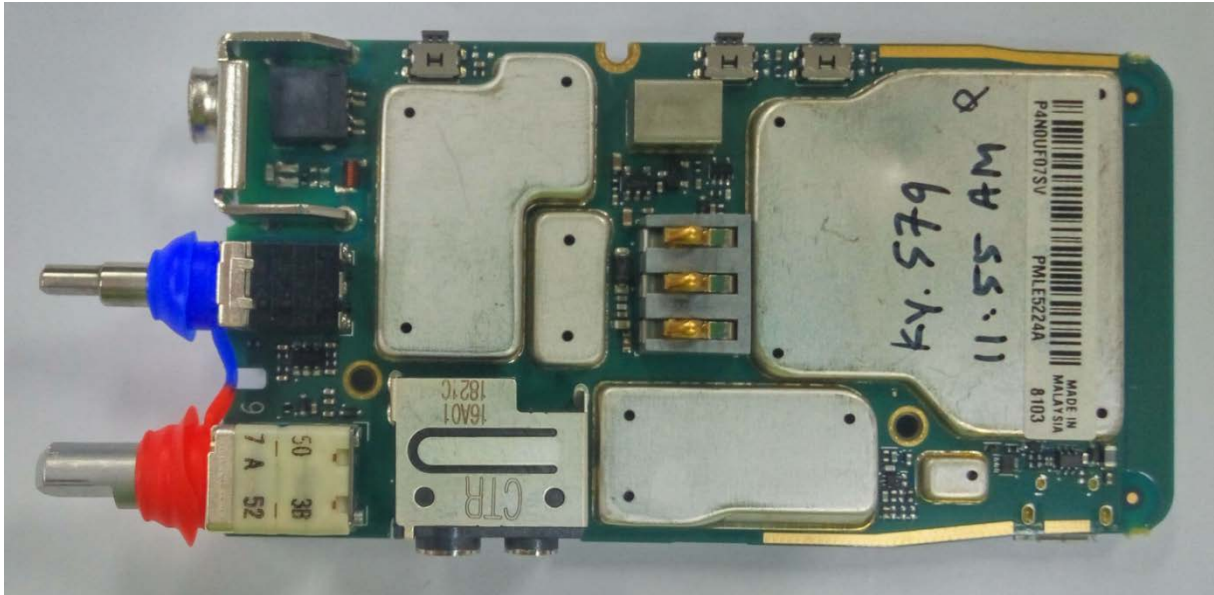
RF board with Shields (Top)

**Exhibit 9B**



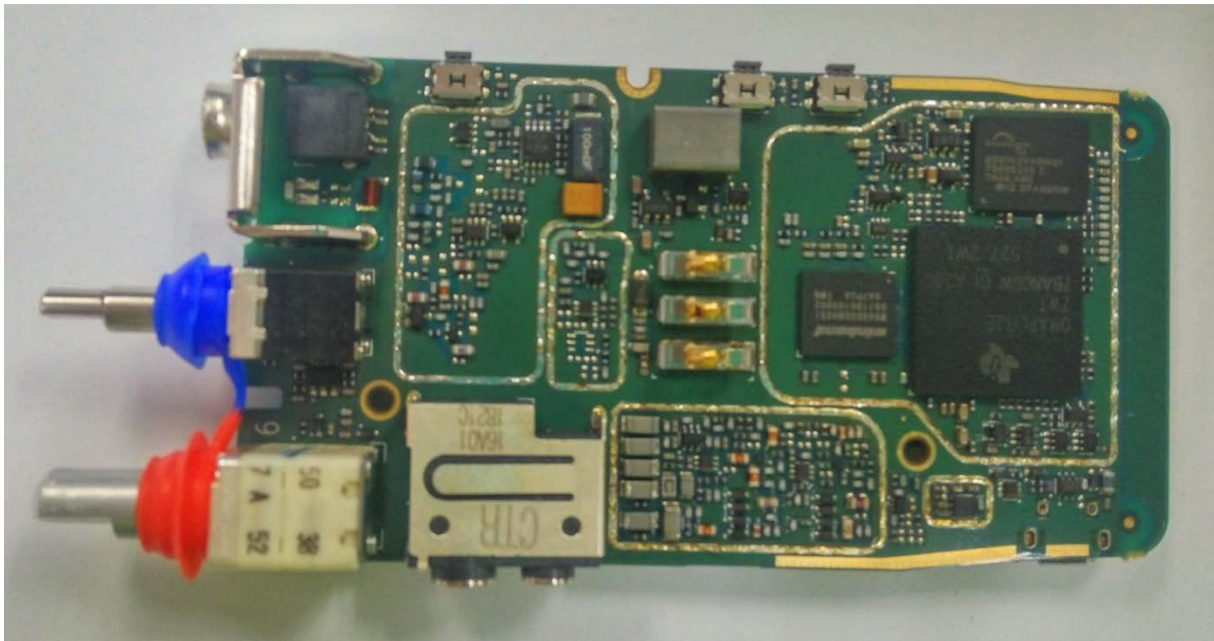
RF board without Shields (Top)

**Exhibit 9C**



RF board with Shields (Bottom)

**Exhibit 9D**



RF board without Shields (Bottom)

**Exhibit 9E**



RF board with chassis and housing (front side)

**Exhibit 9F**



Chassis and Housing (Back side)

**Exhibit 9G**

