

**EXHIBIT 9****INTERNAL PHOTOGRAPHS**

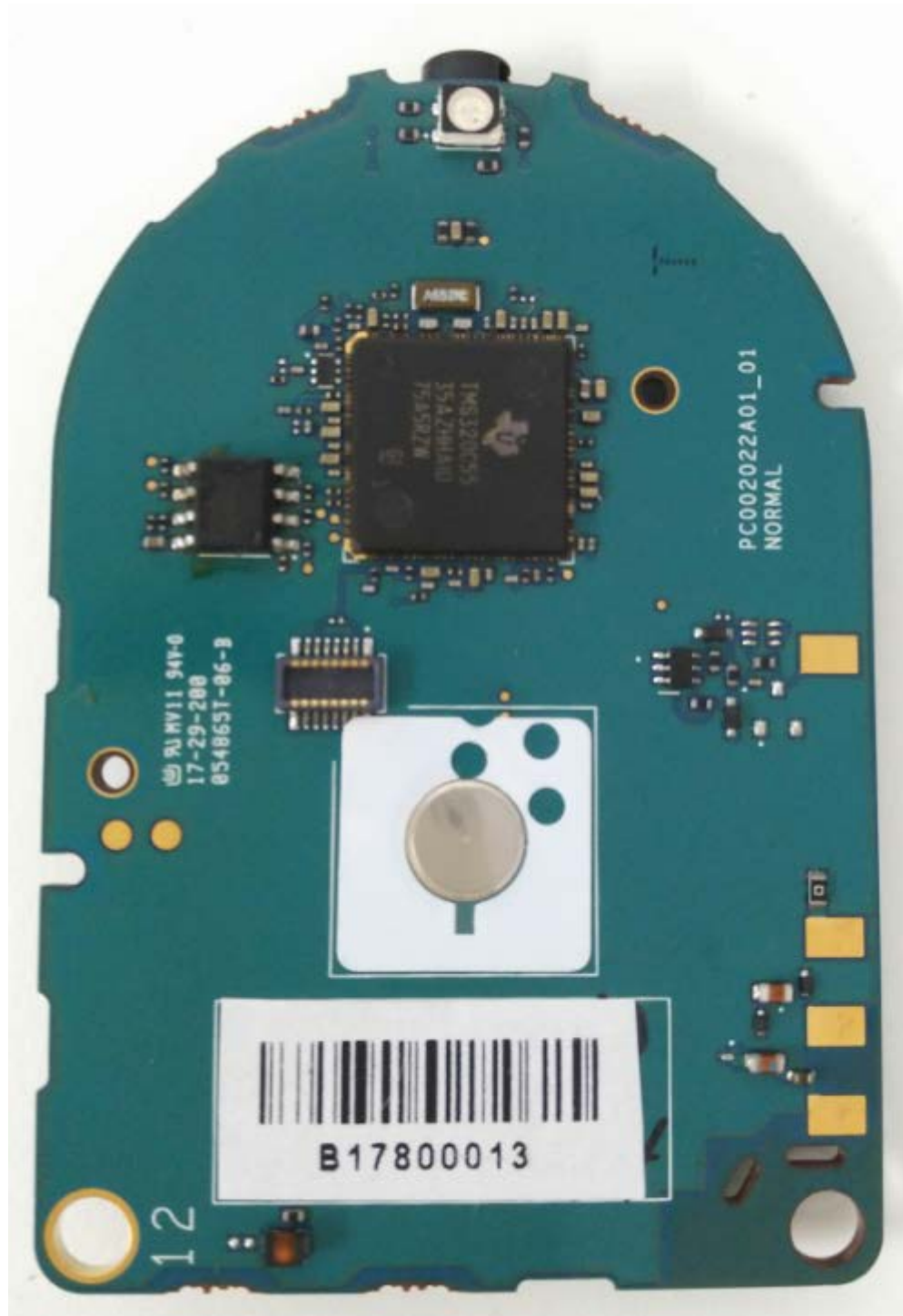
(Pursuant to FCC Part 2.1033(b)(7), 2.1033(c)(14) and RSP 100 Sec 4)

The following photographs are attached.

**Exhibit**

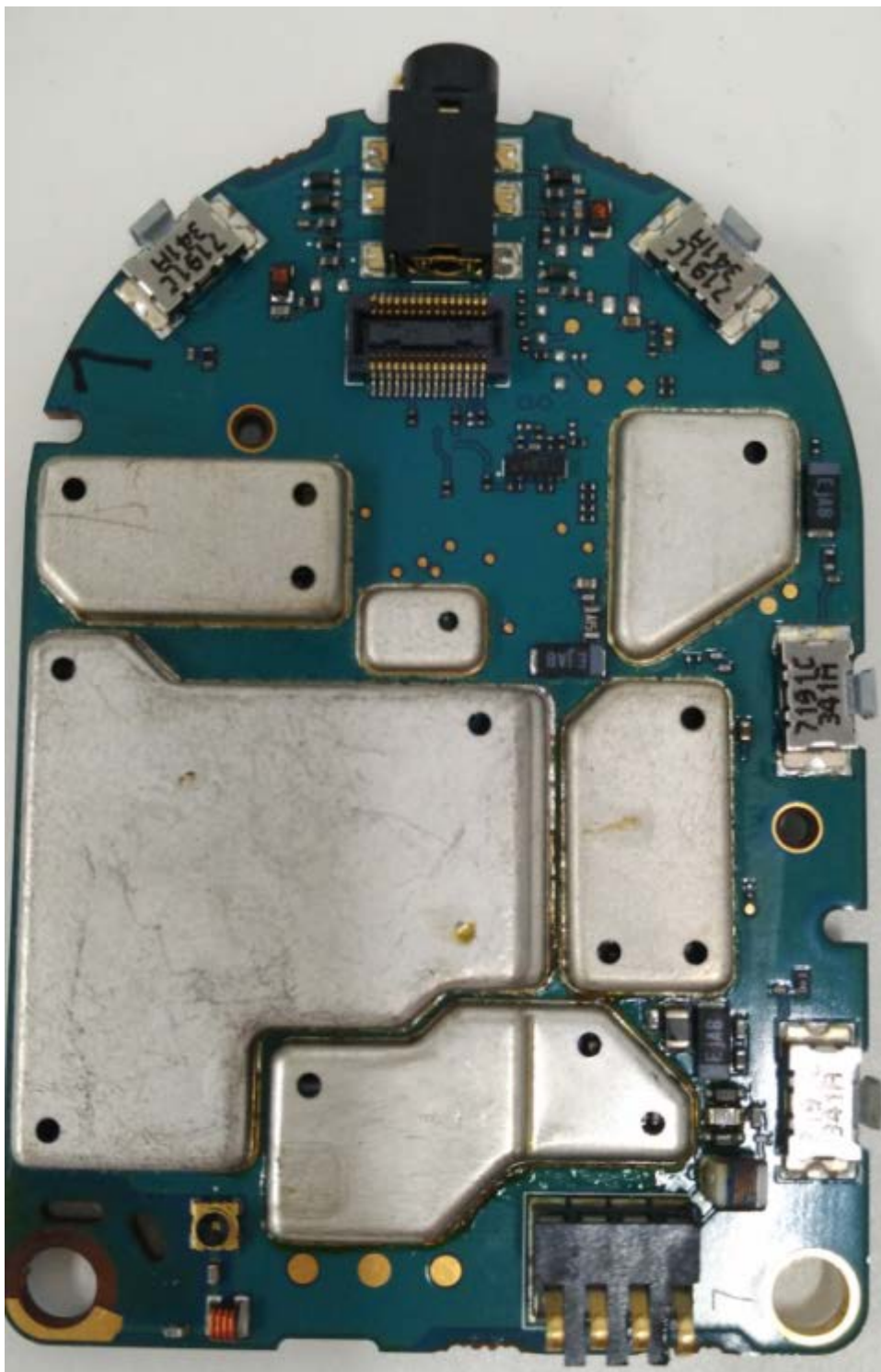
- |   |    |
|---|----|
| 1. RF Board (Top) [CLP1040, CLP1043, CLP1010, CLP1013]                    | 9A |
| 2. RF Board with Shields (Bottom) [CLP1040, CLP1043, CLP1010, CLP1013]    | 9B |
| 3. RF Board without Shields (Bottom) [CLP1040, CLP1043, CLP1010, CLP1013] | 9C |
| 4. RF Board with chasing and housing (front side)                         | 9D |
| 5. Chassis and Housing (back side)  | 9E |
| 6. Exploded View of Radio (CLP1040, CLP1043, CLP1010, CLP1013)            | 9F |

**Exhibits 9A**



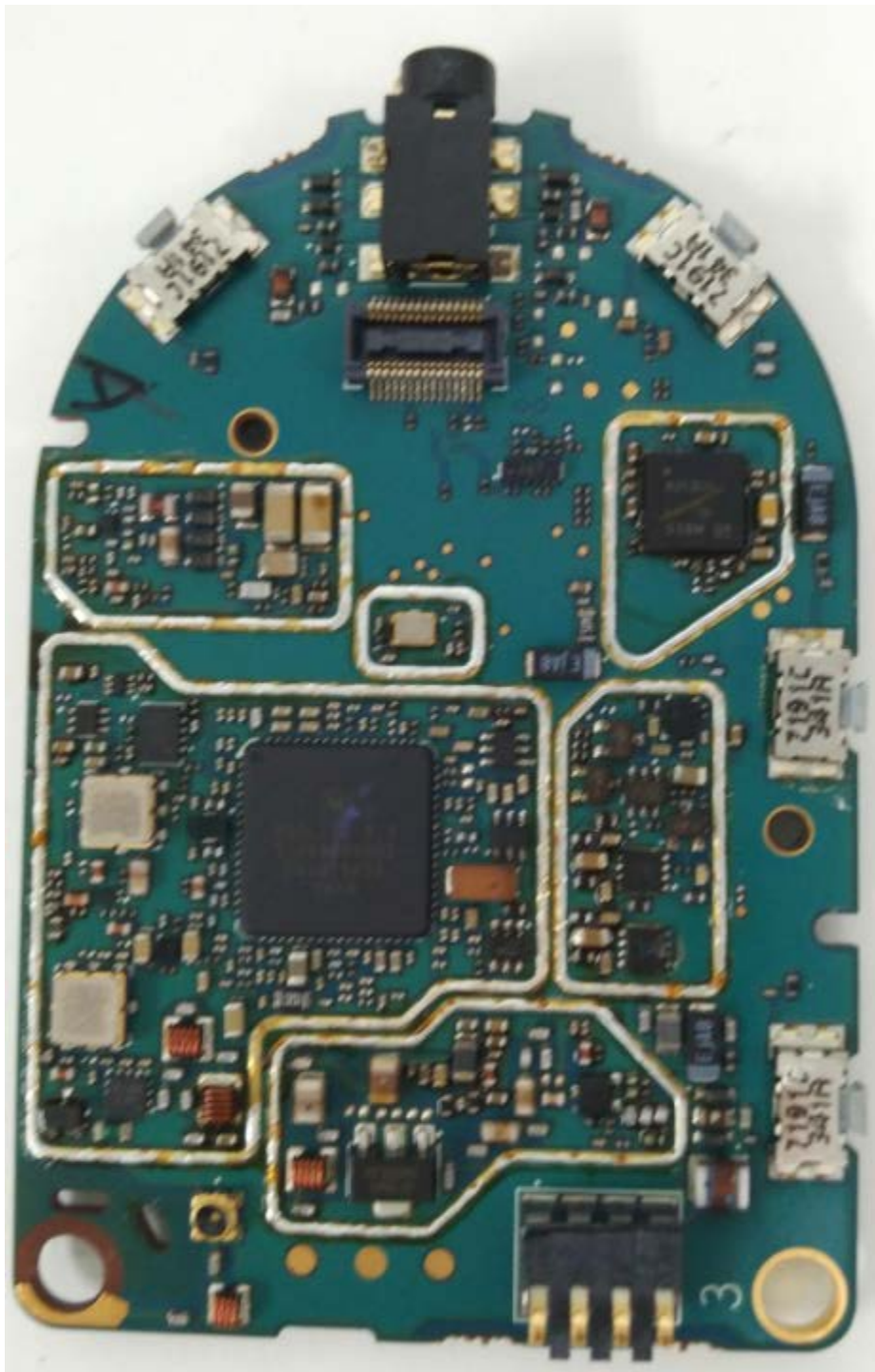
RF board (Top)  
(CLP1040, CLP1043, CLP1010, CLP1013)

**Exhibit 9B**



RF board with Shields (Bottom)  
(CLP1040, CLP1043, CLP1010, CLP1013)

**Exhibit 9C**



RF board without Shields (Bottom)  
(CLP1040, CLP1043, CLP1010, CLP1013)



**Exhibit 9D**

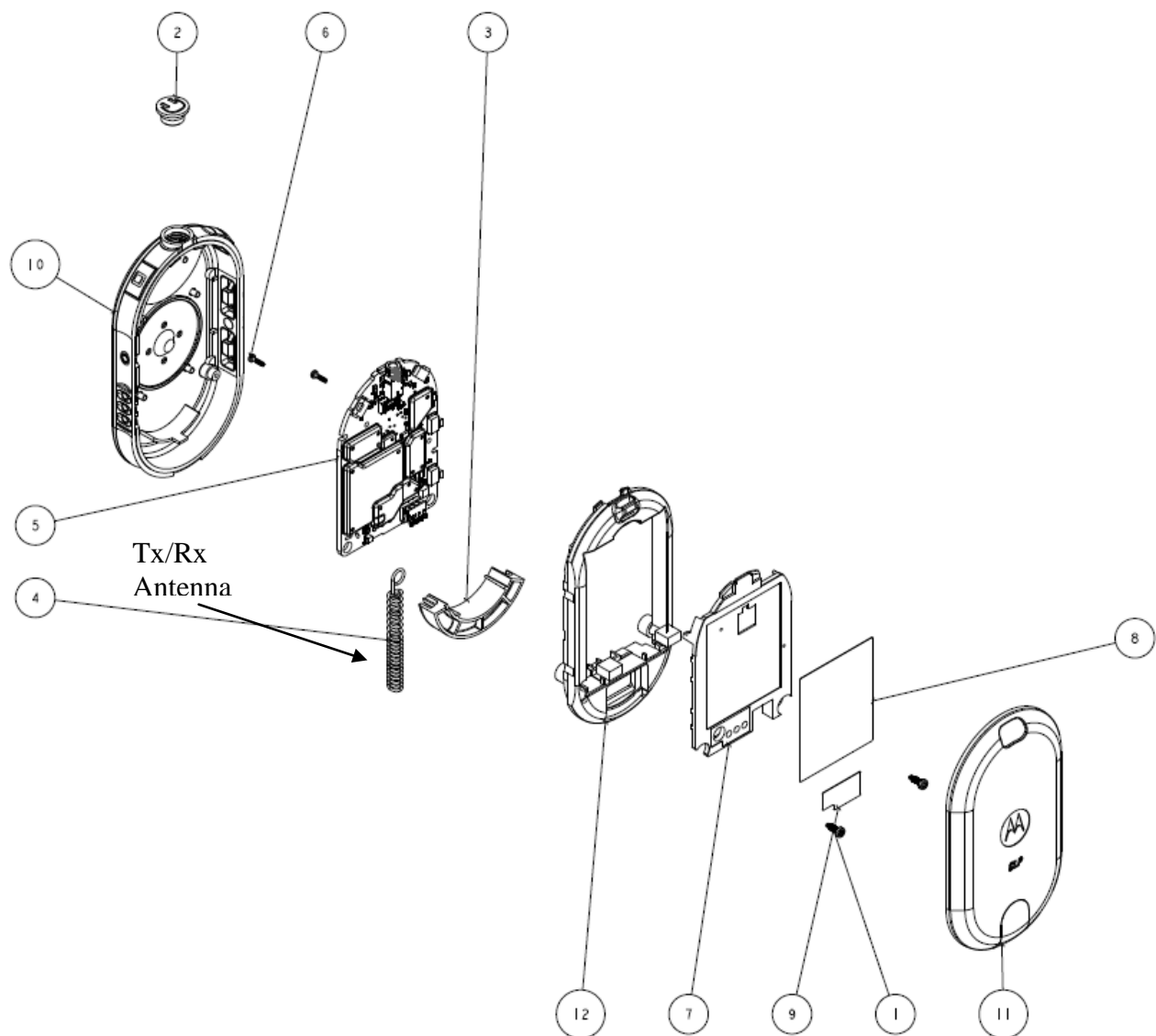


RF board with housing (front side)  
(Same between CLP1040, CLP1043, CLP1010, CLP1013, only front nameplate label change)

**Exhibit 9E**



Chassis and Housing (Back side)  
(CLP1040, CLP1043, CLP1010, CLP1013)

**Exhibit 9F**

Exploded View of Radio  
(Applicable for all Radio CLP1040, CLP1043, CLP1010, CLP1013)