



Exhibit 7B: SAR Test Report Photographs

Motorola Solutions Inc
EME Test Laboratory
8000 West Sunrise Blvd
Fort Lauderdale, FL. 33322



A handwritten signature in black ink, appearing to read 'Deanna Zakharia'.

Deanna Zakharia
EMS EME Lab Senior Resource Manager,
Laboratory Director

Approval Date: 3/28/2013

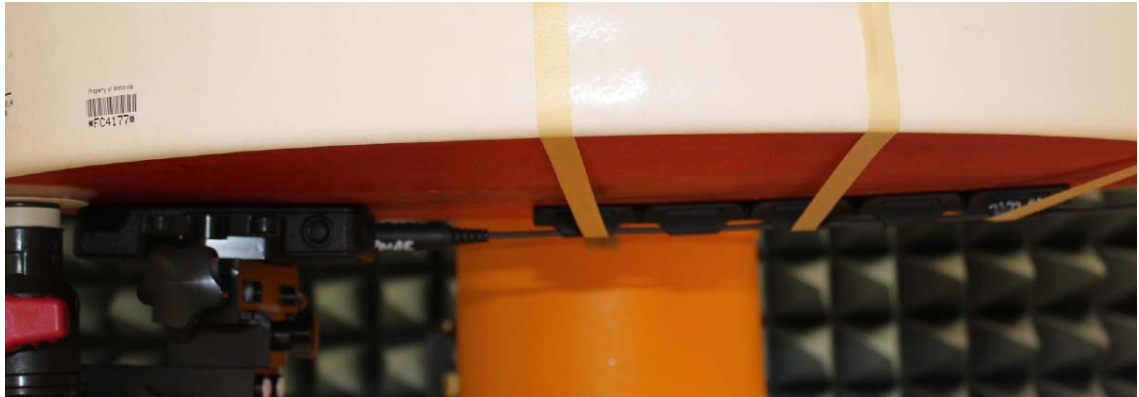
Report Revision History

Date	Revision	Comments
11/29/2012	O	Initial release
3/11/13	A	Compliance verification and clarification updates to address FCC filing inquiry
3/26/2013	B	General updates to address additional FCC request.

1.0 Highest SAR Test Position per body location

1.1 Body

DUT w/ antenna PMAE4080A with offered battery NNTN8129A against the phantom and audio accessories RLN4922A, BDN6729A and BDN6783A attached. Same position used for the other applicable offered battery and applicable audio accessories.



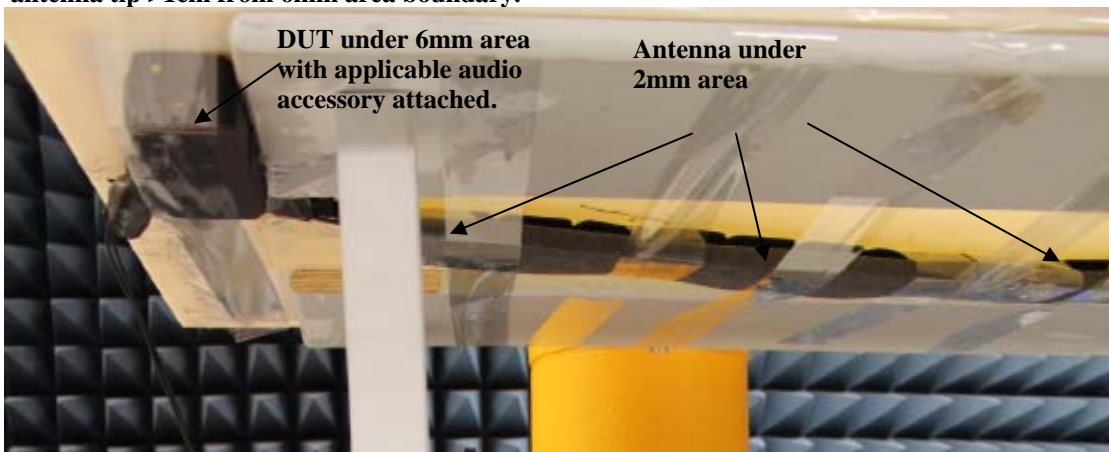
Antenna kit #	Separation Distances (mm)		
	@ bottom surface of the DUT	@ antenna's base	@ antenna's tip
PMAE4080A	0	*8-21	*12

(*) Depending on battery

Compliance verification per FCC guidance using larger 80x60cm flat phantom

Test position 1

DUT (radio) with applicable audio accessory attached under 6mm area; antenna length under 2mm area; antenna tip >1cm from 6mm area boundary.

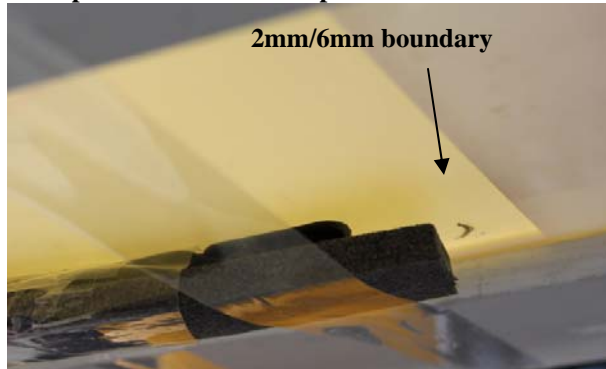


DUT (Radio) with applicable audio attached under 6mm area of the phantom.

Test position 1(continued)



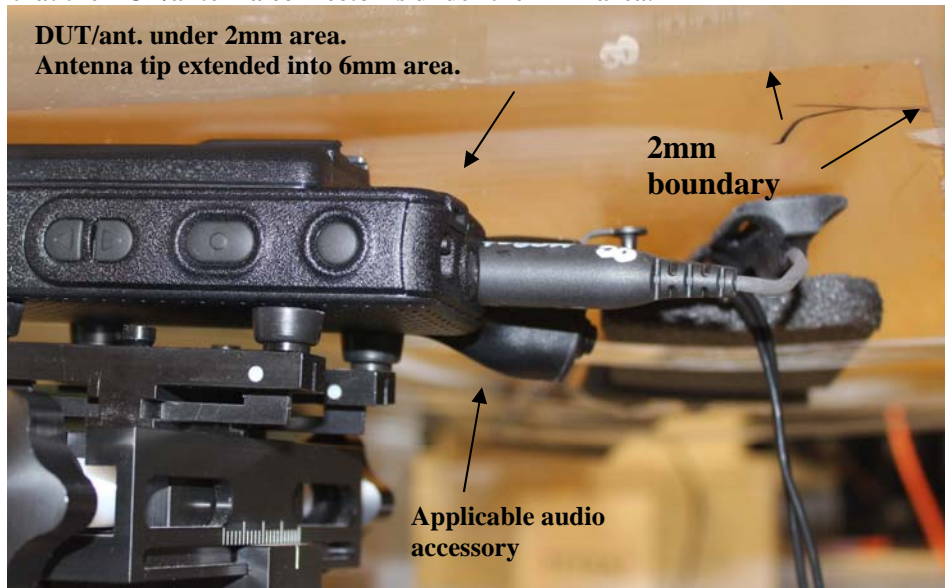
Antenna tip under 2mm area of phantom >1cm from boundary



Test Position 2

DUT/antenna/ applicable audio accessory shifted forward after Test Position 1 such that the DUT/antenna connector is under the 2mm area.

**DUT/ant. under 2mm area.
Antenna tip extended into 6mm area.**



Test Position 2 (Continued)

Close up of antenna tip under 6mm area with 8.7mm spacer



1.2 Face
Not applicable

1.3 Head
Not applicable.

1.4 Hand
Not applicable

2.0 Other SAR tested positions at the body

2.1 Body worn

DUT w/antenna PMAE4065A, battery NNTN8129B, audio HMN4104B and body worn PMLN4651A against the phantom. Same position used for the other applicable offered antenna, battery and without audio cable attached.



Antenna kit #	Separation Distances (mm)		
	@ bottom surface of the DUT	@ antenna's base	@ antenna's tip
PMAE4065A	8	*29-34	*44-48
FAF5259A	8	29	37

(*) Depending on battery

DUT w/antenna FAF5259A battery NNTN8128B, audio HMN4104B and body worn PMLN7008A against the phantom. Same position used for the other applicable offered battery and audio accessories.



Antenna kit #	Separation Distances (mm)		
	@ bottom surface of the DUT	@ antenna's base	@ antenna's tip
PMAE4065A	8	29	*45-51
FAF5259A	8	29	39

(*) Depending on battery

DUT w/antenna PMAE4065A, battery NNTN8305A, audio HMN4104B and body worn PMLN6327A against the phantom.



Antenna kit #	Separation Distances (mm)		
	@ bottom surface of the DUT	@ antenna's base	@ antenna's tip
PMAE4065A	14	29	41
FAF5259A	14	29	35

2.2 Front Side against phantom
Not applicable.

2.3 Back side against phantom
Not applicable.

2.4 Front 2.5cm separation
Not applicable

2.5 Antenna 2.5cm separation
Not applicable

2.6 Back 2.5cm separation
Not applicable

3.0 Other SAR tested positions at the face

3.1 Back of DUT at 2.5cm separation
Not applicable

3.2 Front of DUT at 2.5cm separation
Not applicable

4.0 Other SAR tested positions at the head

4.1 Left ear touch
Not applicable.

4.2 Left ear tilt
Not applicable.

4.3 Right ear touch
Not applicable.

4.4 Right ear tilt
Not applicable.

5.0 Other SAR tested positions at the hand

5.1 Left side
Not applicable.

5.2 Right side
Not applicable.

5.3 Top side
Not applicable.

5.4 Bottom side
Not applicable.

5.5 Back side
Not applicable.

6.0 DUT and Accessory Photos

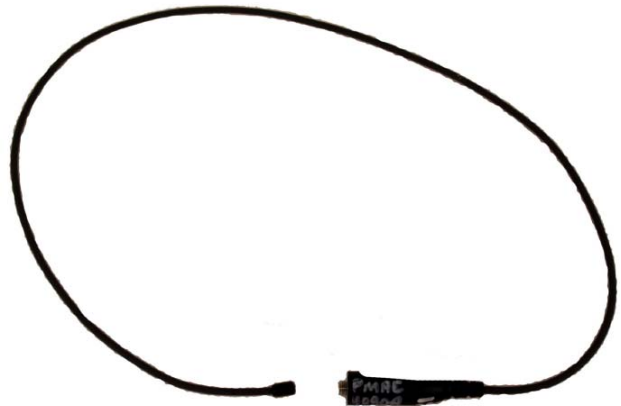
The purpose of these photos is to illustrate the offered accessories. Refer to Part 1 of 2, section 7.0 for additional details on the offered accessories.

6.1 Antenna dimension and photo(s):

Antenna Kit #	Physical Length (mm)	Electrical Length
PMAE4080A	760	¼ wave
PMAE4065A	150	¼ wave
FAF5259A	93	¼ wave

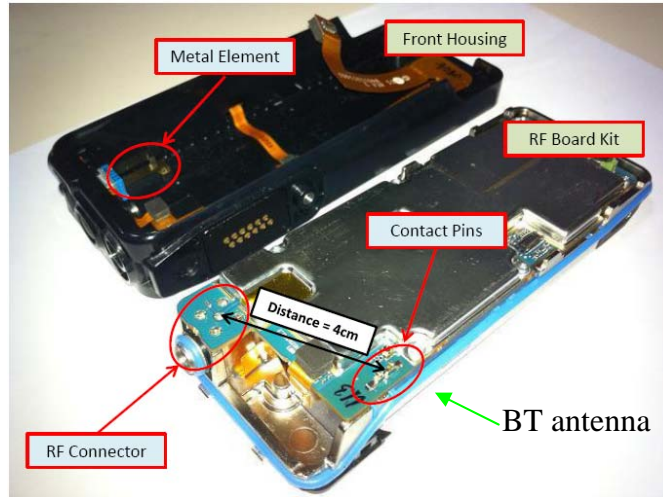


Left: FAF5259A, Right: PMAE4065A



PMAE4080A

Simultaneous antennas separation distance



6.2 Body worn accessories



**DUT Back View
Belt clip
PMLN4651A**

**DUT Side View
Belt clip
PMLN4651A**

**DUT Back View
PMLN7008A**

**DUT Side View
PMLN7008A**



DUT Back View
Carry holder
PMLN6327A

DUT Side View
Carry holder
PMLN6327A

DUT Front View
Carry holder
PMLN6327A

6.3 Battery accessories:



Left – Right; front and side views: NNTN8128B, NNTN8129A

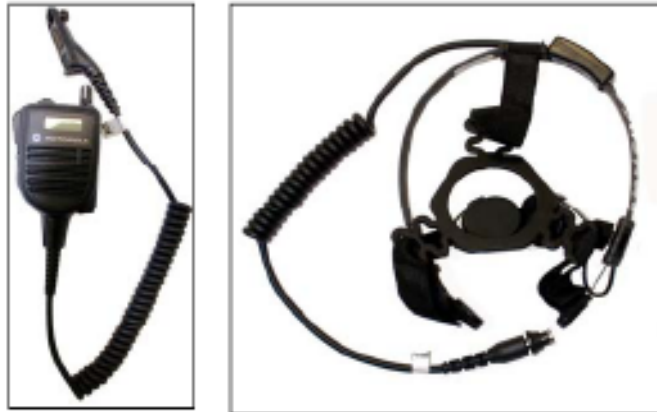


Left-Right; Back, front and side views: NNTN8305A

6.4 Audio accessories:



Left – Right: PMLN5275B, PMLN5111A



Left – Right: HMN4104B, RMN5116A



Left – Right: Remote Speaker Microphone (RSM) PMMN4062A, PMMN4065A and PMMN4024A



Left – Right: PMLN5101A, RLN5882A/RLN5883, RMN5058A



RLN5880A

PMLN5102A

PMMN4040A

PMMN4046A/PMMN4050A



PMLN5096A

PMLN5097A

PMLN5653A



RLN4922A

BDN6667A/BDN6729A

BDN6669A/BDN6731A

BDN6668A/BDN6730A



BDN6783A

NTN2574B

6.5 DUT Dimensions

	Height (mm)	Width (mm)	Depth (mm)
Radio only (w/o battery)	140	60	25
Radio with battery NNTN8128B	140	60	33
Radio with battery NNTN8129A	140	60	40
Radio with battery NNTN8305A	140	60	25

For illustration purposes the following figure reflects the location of the device’s dimensions.



Note: H = Height; W = Width; D = Depth

$$W1 = (\text{Width @ Top}) / (\text{Width @ PTT})$$

$$D2 = (\text{Depth @ Bottom}) / (\text{Depth @ PTT})$$