

EXHIBIT 9

Internal Photographs

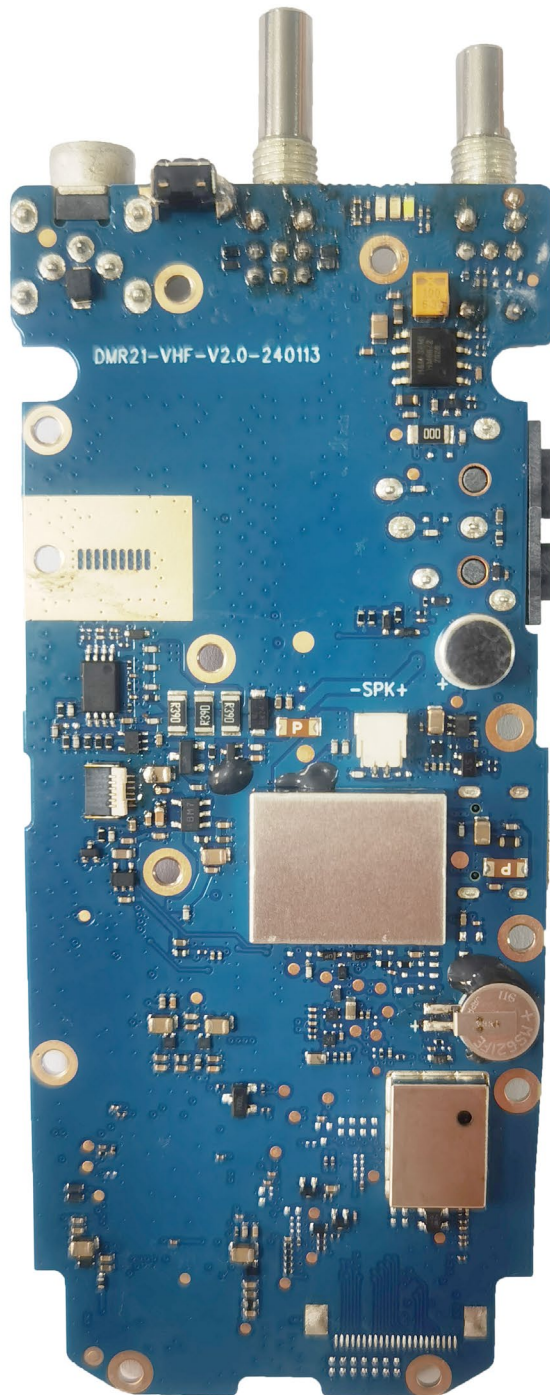
(Pursuant to FCC Part 2.1033(b)(7), 2.1033(c)(12) and RSP 100 Annex C)

The following photographs are attached.

Exhibit

- | | | |
|----|--|----|
| 1. | RF board <u>with</u> Shields (Top) | 9A |
| 2. | RF board <u>without</u> Shields (Top) | 9B |
| 3. | RF board <u>with</u> Shields (Bottom) | 9C |
| 4. | RF board <u>without</u> Shields (Bottom) | 9D |
| 5. | RF boards <u>with</u> chassis and housing for (Front Side) | 9E |
| 6. | Chassis and housing (Back Side) | 9F |

Exhibits 9A - RF board with Shields (Top)



Exhibits 9B - RF board without Shields (Top)

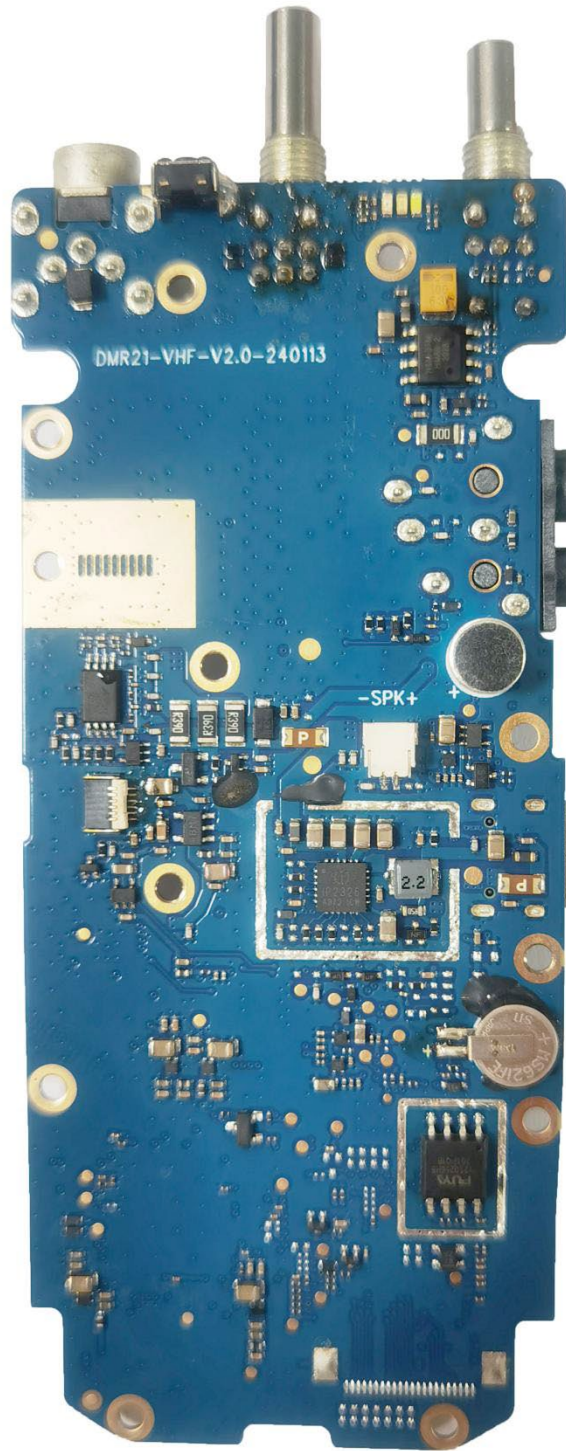


Exhibit 9C - RF board with Shields (Bottom)

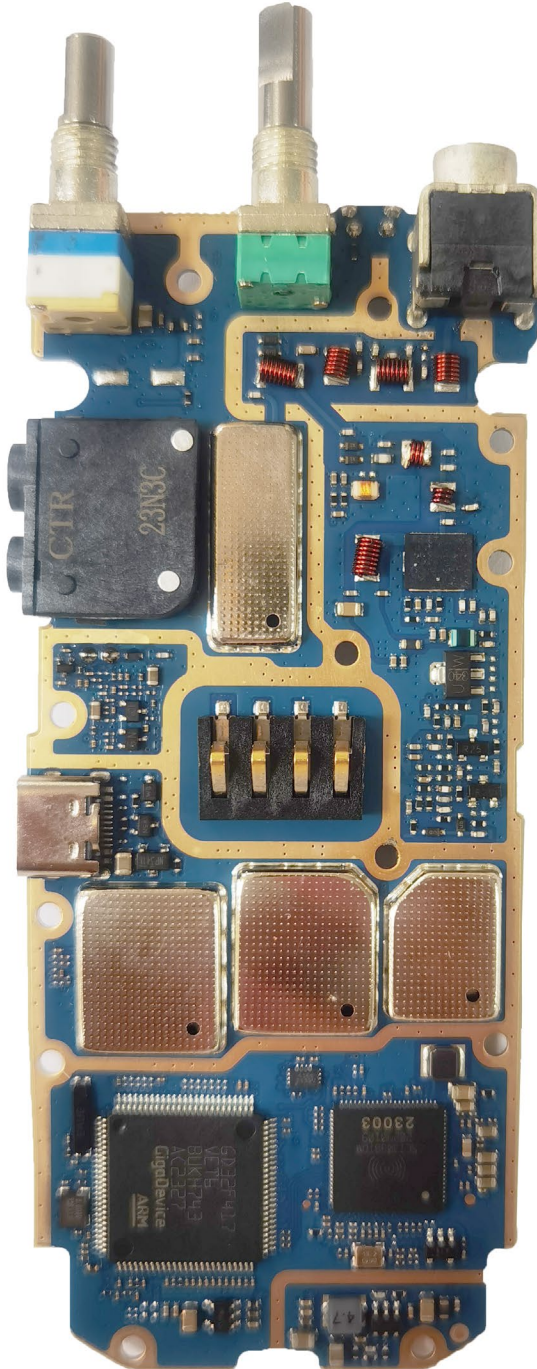


Exhibit 9D - RF board without Shields (Bottom)

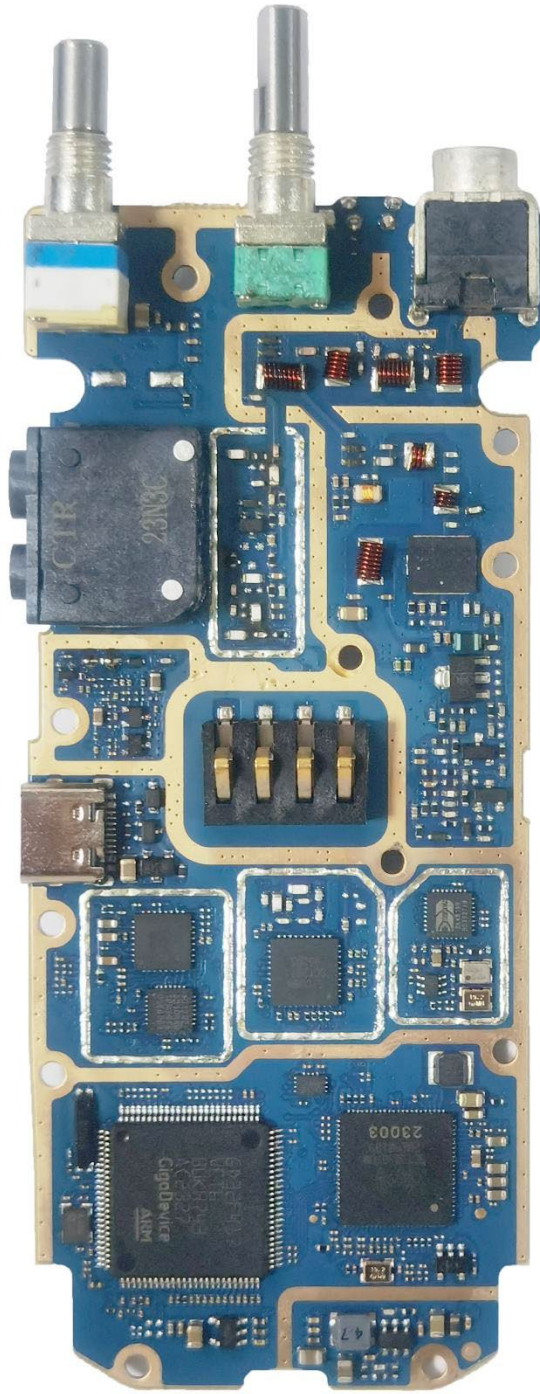
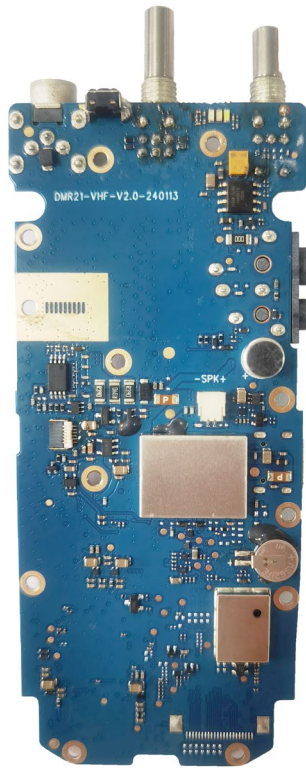


Exhibit 9E - RF boards with chassis and housing for (Front Side)

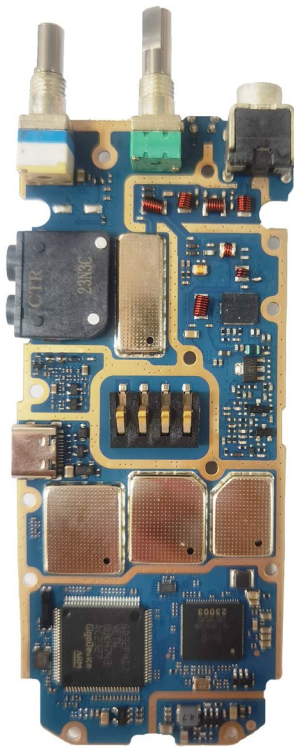


BPR 50dX
Main board



BPR 50dX

Exhibit 9F - Chassis and housing (Back Side)



BPR 50dX
Main board



BPR 50dX

*** END ***