

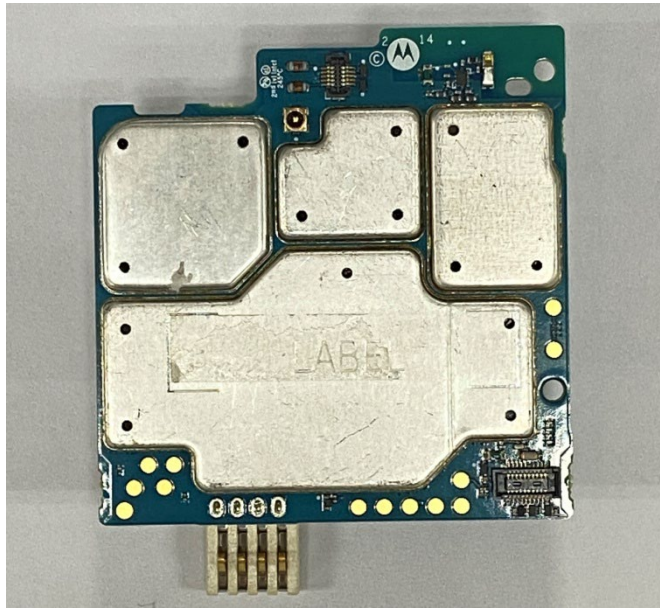
EXHIBIT 9**Internal Photographs**

(Pursuant to FCC Part 2.1033(b)(7), 2.1033(c)(12) and RSP 100 Annex C)

The following photographs are attached.

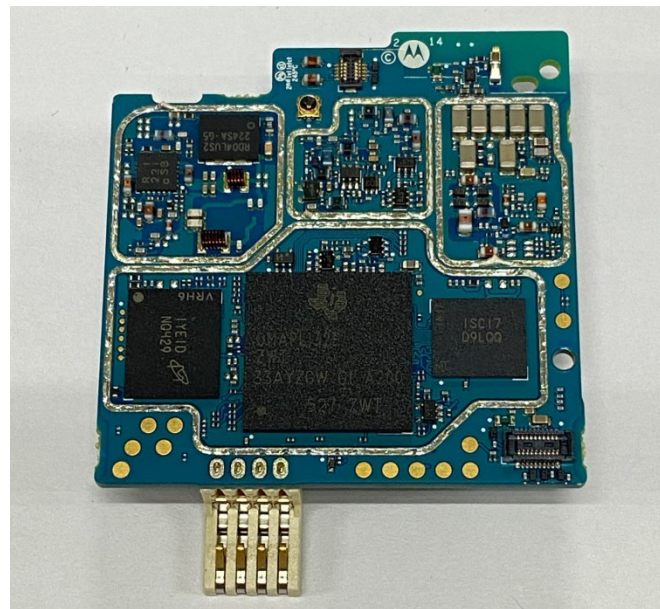
	<u>Exhibit</u>
1. RF board <u>with</u> Shields (Top) - Display model	9A
2. RF board <u>without</u> Shields (Top) - Display model	9B
3. RF board <u>with</u> Shields (Top) - Plain model	9C
4. RF board <u>without</u> Shields (Top) - Plain model	9D
5. RF board <u>with</u> Shields (Bottom) - Display model	9E
6. RF board <u>without</u> Shields (Bottom) - Display model	9F
7. RF board <u>with</u> Shields (Bottom) - Plain model	9G
8. RF board <u>without</u> Shields (Bottom) - Plain model	9H
9. RF boards <u>with</u> housing - Display model	9I
10. RF boards <u>with</u> housing - Plain model	9J
11. Display Board (Top)	9K
12. Display Board <u>with</u> Shield (Bottom)	9L
13. Display Board <u>without</u> Shield (Bottom)	9M
14. Exploded view of the radio	9N

Exhibit 9A



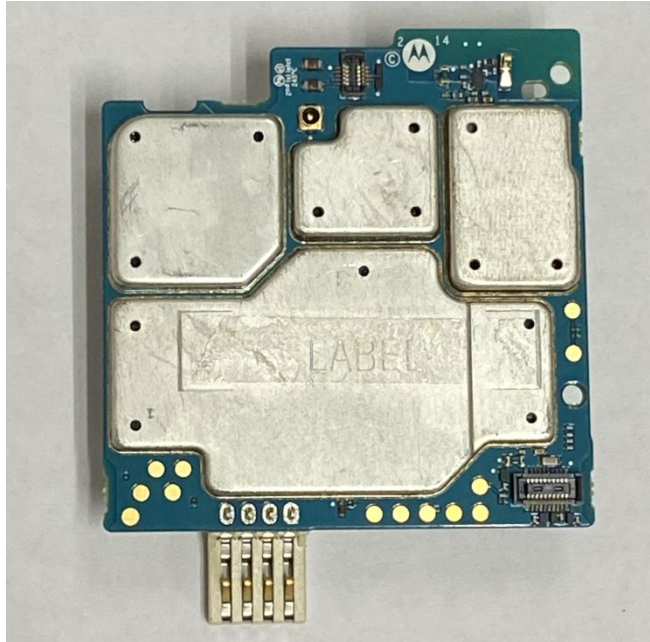
RF board with Shields (Top) - Display Model

Exhibit 9B



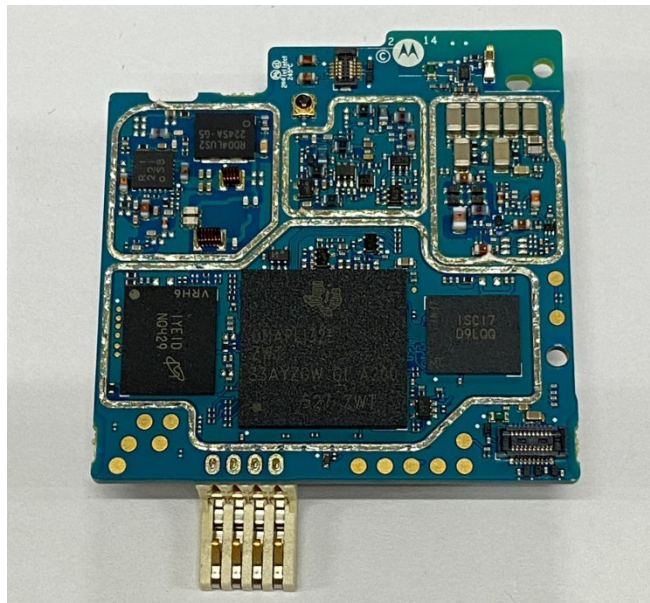
RF board without Shields (Top) - Display Model

Exhibit 9C



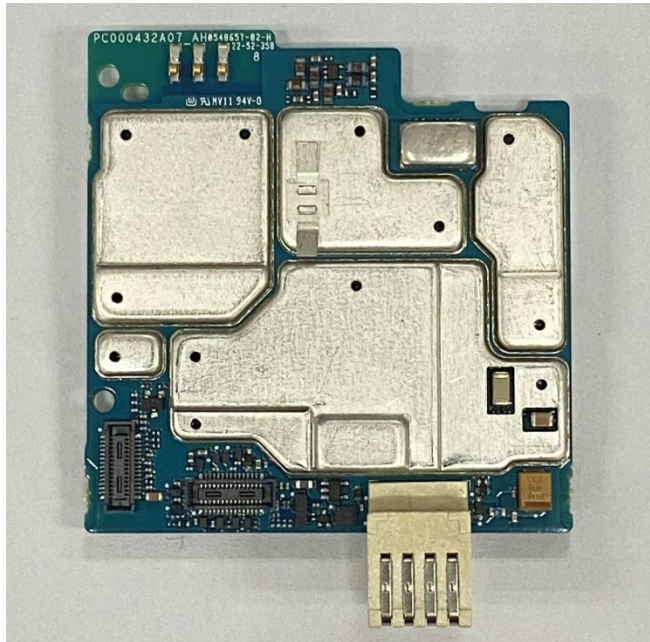
RF board with Shields (Top) - Plain Model

Exhibit 9D



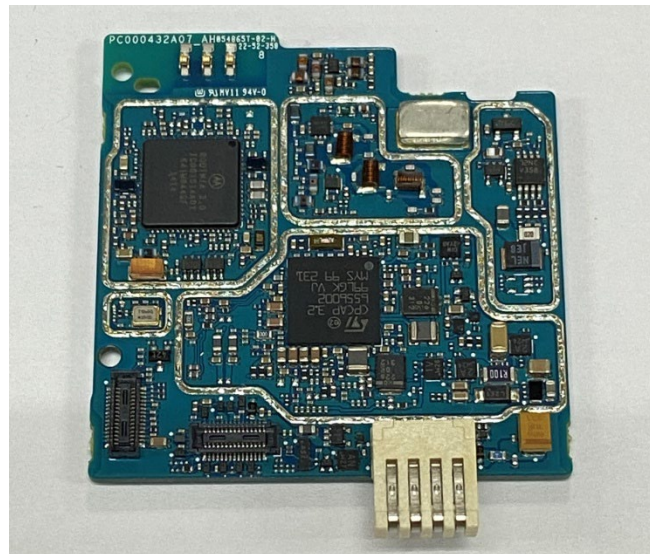
RF board without Shields (Top) - Plain Model

Exhibit 9E



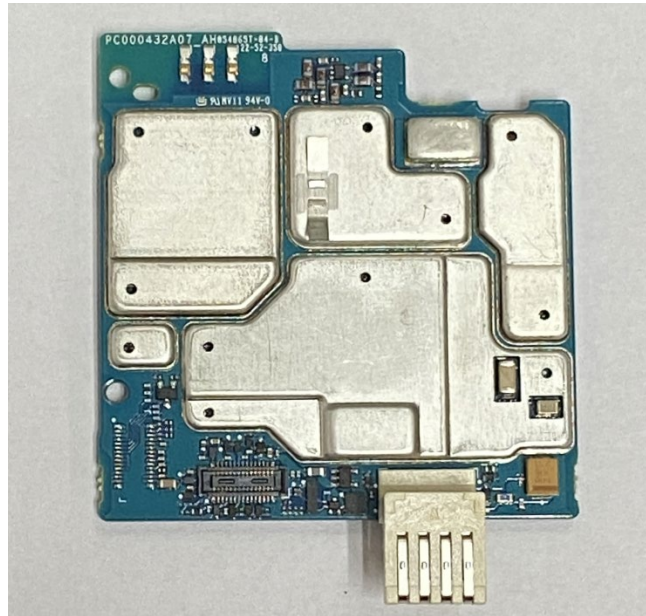
RF board with Shields (Bottom) - Display Model

Exhibit 9F



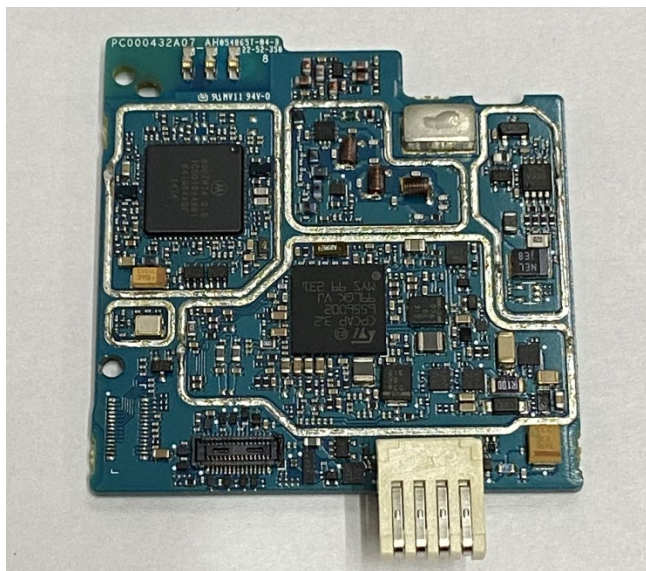
RF board without Shields (Bottom) - Display Model

Exhibit 9G



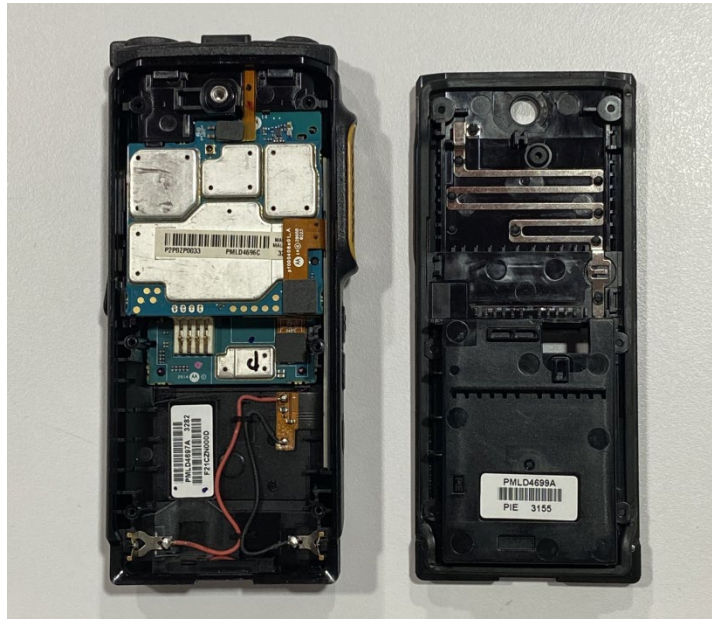
RF board with Shields (Bottom) - Plain Model

Exhibit 9H



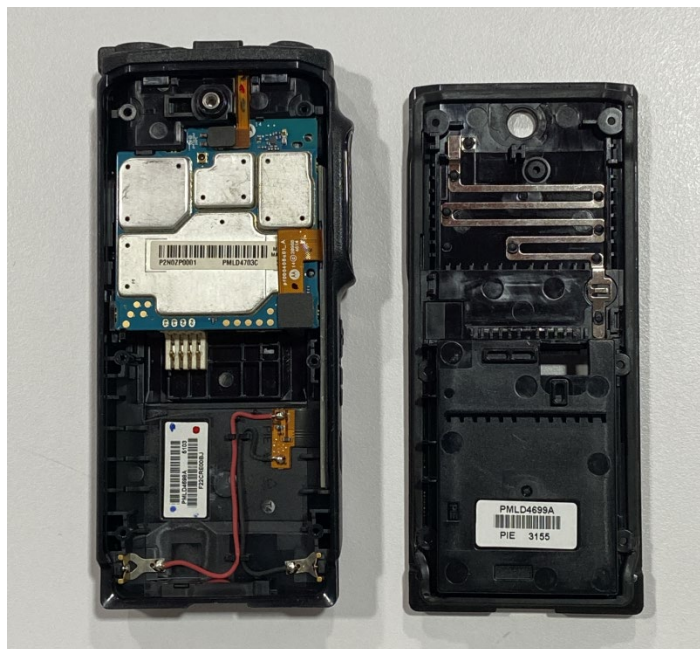
RF board without Shields (Bottom) - Plain Model

Exhibit 9I



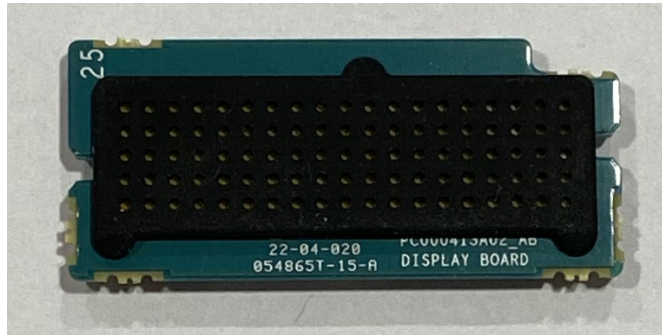
RF boards with housing - Display model

Exhibit 9J



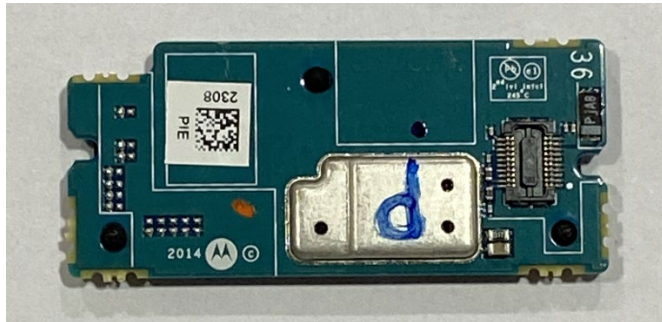
RF boards with housing - Plain model

Exhibit 9K



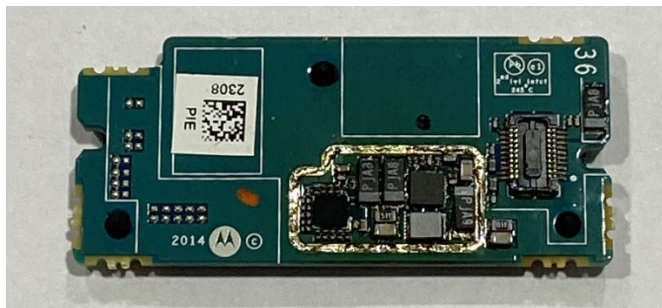
Display Board (Top)

Exhibit 9L



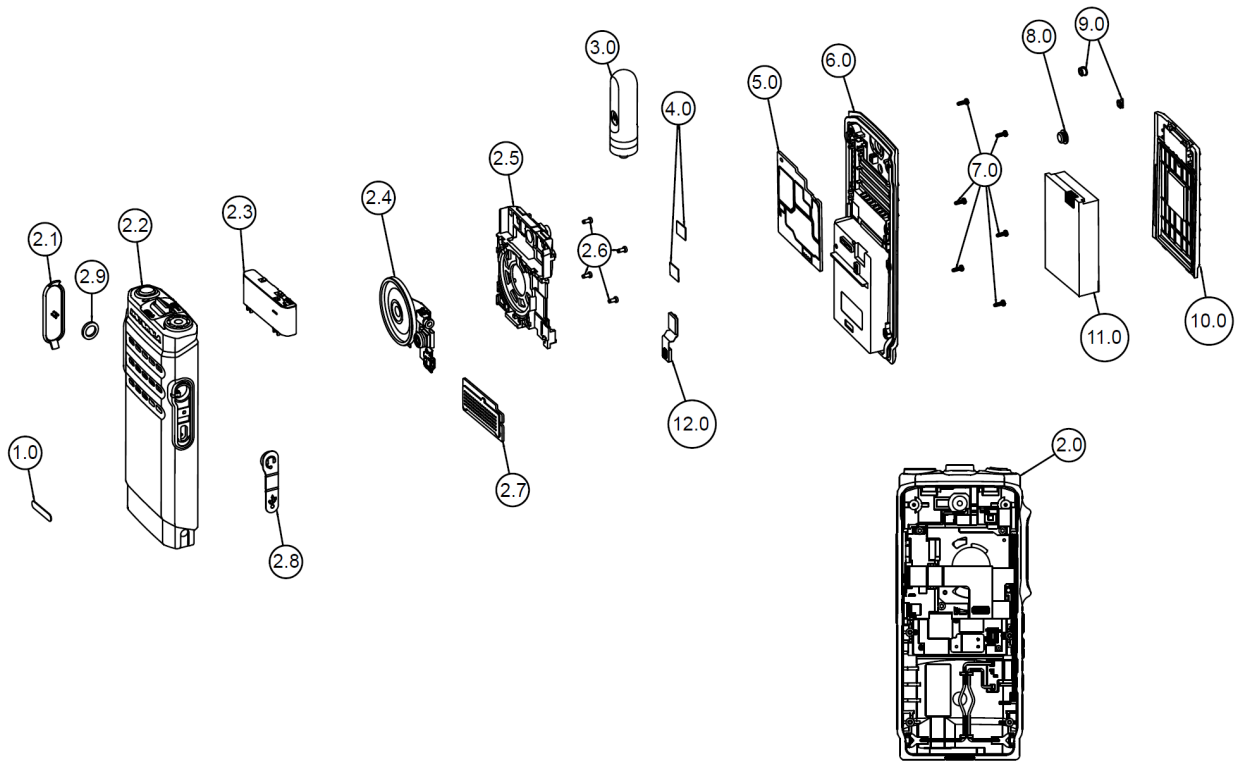
Display Board with Shield (Bottom)

Exhibit 9M



Display Board without Shield (Bottom)

Exhibit 9N



Exploded view of the radio

*** END ***