



**DECLARATION OF COMPLIANCE SAR ASSESSMENT Part 2 of 2**

<p><b>Motorola Solutions Inc.</b>  <b>EME Test Laboratory</b>                  Motorola Solutions Malaysia Sdn Bhd                  Plot 2A, Medan Bayan Lepas,                  Mukim 12 SWD 11900 Bayan Lepas Penang, Malaysia.</p>	<p><b>Date of Report:</b> 4/11/2022  <b>Report Revision:</b> B</p>
---	--

<b>Responsible Engineer:</b>	Puteri Alifah Ilyana Binti Nor Rahim (EME Engineer)
<b>Report Author:</b>	Lee Kin Kting (EME Technician)
<b>Date/s Tested:</b>	9/27/2021- 10/17/2021
<b>Manufacturer:</b>	Motorola Solutions Inc.
<b>DUT Description:</b>	Handheld Portable – CP200d 136-174M 5W ND
<b>Test TX mode(s):</b>	CW (PTT)
<b>Max. Power output:</b>	6.0W
<b>Nominal Power:</b>	5.0W
<b>Tx Frequency Bands:</b>	LMR 136-174MHz
<b>Signaling type:</b>	FM
<b>Model(s) Tested:</b>	AAH01JDC9JA2AN (PMUD3231C) / PMUD3231CAANAA,
<b>Model(s) Certified:</b>	AAH01JDC9JA2AN (PMUD3231C) / PMUD3231CAANAA, AAH01JDC9JC2AN (PMUD3231C) / PMUD3231CAANEA
<b>Serial Number(s):</b>	752TXR1427
<b>Classification:</b>	Occupational/Controlled
<b>Applicant Name:</b>	Motorola Solutions Inc.
<b>Applicant Address:</b>	8000 West Sunrise Boulevard, Fort Lauderdale, Florida 33322
<b>FCC ID:</b>	AZ489FT3849; LMR 150.8-173.4MHz This report contains results that are immaterial for FCC equipment approval, which are clearly identified.
<b>IC:</b>	109U-89FT3849; LMR 138-174MHz This report contains results that are immaterial for ISED equipment approval, which are clearly identified.
<b>ISED Test Site registration:</b>	24843
<b>FCC Test Firm Registration Number:</b>	823256

The test results clearly demonstrate compliance with FCC Occupational/Controlled RF Exposure limits of 8 W/kg averaged over 1 gram per the requirements of FCC 47 CFR § 2.1093 and RSS-102 (Issue 5).

Based on the information and the testing results provided herein, the undersigned certifies that when used as stated in the operating instructions supplied, said product complies with the national and international reference standards and guidelines listed in section 4.0 of this report (no deviation from standard methods). This report shall not be reproduced without written approval from an officially designated representative of the Motorola Solutions Inc EME Laboratory.

I attest to the accuracy of the data and assume full responsibility for the completeness of these measurements. This reporting format is consistent with the suggested guidelines of the TIA TSB-150 December 2004. The results and statements contained in this report pertain only to the device(s) evaluated.

<p>  <b>Tey Pei Loo (Approved Signatory)</b>  <b>Approval Date: 4/11/2022</b></p>	
--	--

## **Appendix D**

### **System Verification Check Scans**

9/27/21, 9:13 PM

\_\_0\_CW\_150-00MHz.html

Motorola Solutions, EME Laboratory

2021-09-27, 20:53

System Performance Check Report

Summary

Dipole	Frequency [MHz]	TSL	Power [dBm]	Dev. 1g [%]	Dev. 10g [%]
CLA-150 - SN4010	150.0	HSL	30.0	7.9	3.5

Exposure Conditions

Phantom Section, TSL	Test Distance [mm]	Band	Group, UID	Frequency [MHz], Channel Number	Conversion Factor	TSL Conductivity [S/m]	TSL Permittivity
Flat, HSL	0		, 0--	150.0, 0	12.09	0.730	51.2

Hardware Setup

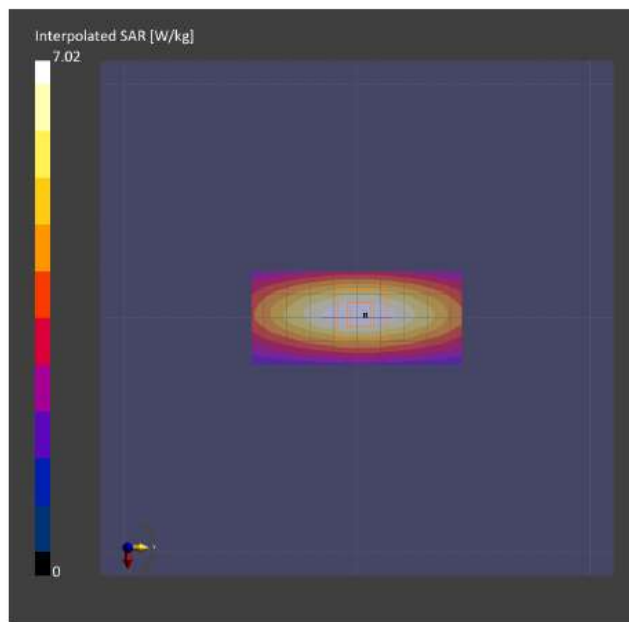
Phantom	TSL, Measured Date	Probe, Calibration Date	DAE, Calibration Date
ELI V4.0 (20deg probe tilt) - ELI4 1016	HSL150 , 2021-Sep-27	EX3DV4 - SN7511, 2021-06-18	DAE4 Sn729, 2021-06-09

Scans Setup

	Area Scan	Zoom Scan
Grid Extents [mm]	40.0 x 90.0	30.0 x 30.0 x 30.0
Grid Steps [mm]	10.0 x 15.0	6.0 x 6.0 x 1.5
Sensor Surface [mm]	3.0	1.4
Graded Grid	Yes	Yes
Grading Ratio	1.5	1.5
MAIA	N/A	N/A
Surface Detection	VMS + 6p	VMS + 6p
Scan Method	Measured	Measured

Measurement Results

	Area Scan	Zoom Scan
Date	2021-09-27, 20:53	2021-09-27, 20:59
psSAR1g [W/Kg]	3.95	3.88
psSAR10g [W/Kg]	2.82	2.50
Power Drift [dB]	-0.00	0.02
TSL Correction	Positive / Negative	Positive / Negative



9/28/21, 8:44 PM

\_\_0\_CW\_150-00MHz.html

Motorola Solutions, EME Laboratory

2021-09-28, 20:32

System Performance Check Report

Summary

Dipole	Frequency [MHz]	TSL	Power [dBm]	Dev. 1g [%]	Dev. 10g [%]
CLA-150 - SN4010	150.0	HSL	30.0	8.1	4.1

Exposure Conditions

Phantom Section, TSL	Test Distance [mm]	Band	Group, UID	Frequency [MHz], Channel Number	Conversion Factor	TSL Conductivity [S/m]	TSL Permittivity
Flat, HSL	0		, 0--	150.0, 0	12.09	0.735	51.9

Hardware Setup

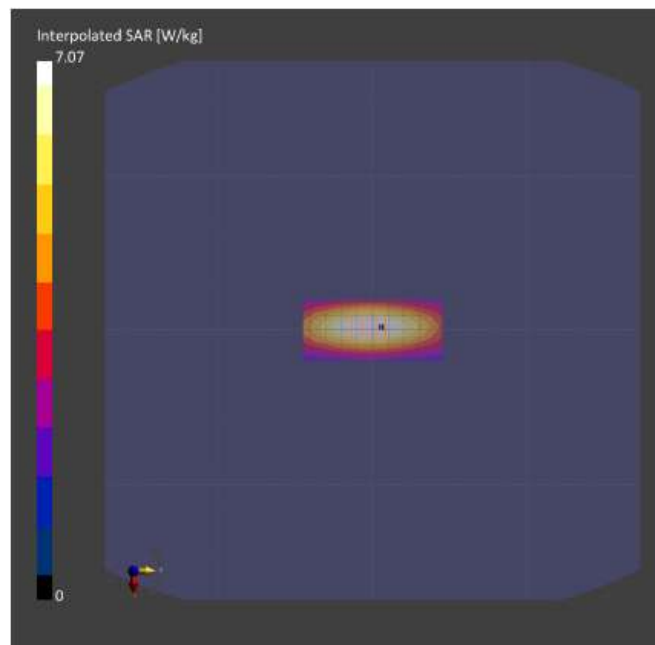
Phantom	TSL, Measured Date	Probe, Calibration Date	DAE, Calibration Date
ELI V4.0 (20deg probe tilt) - ELI4 1016	HSL150 , 2021-Sep-28	EX3DV4 - SN7511, 2021-06-18	DAE4 Sn729, 2021-06-09

Scans Setup

	Area Scan	Zoom Scan
Grid Extents [mm]	40.0 x 90.0	30.0 x 30.0 x 30.0
Grid Steps [mm]	10.0 x 15.0	6.0 x 6.0 x 1.5
Sensor Surface [mm]	3.0	1.4
Graded Grid	Yes	Yes
Grading Ratio	1.5	1.5
MAIA	N/A	N/A
Surface Detection	VMS + 6p	VMS + 6p
Scan Method	Measured	Measured

Measurement Results

	Area Scan	Zoom Scan
Date	2021-09-28, 20:32	2021-09-28, 20:38
psSAR1g [W/Kg]	3.95	3.89
psSAR10g [W/Kg]	2.83	2.52
Power Drift [dB]	0.00	0.01
TSL Correction	Positive / Negative	Positive / Negative



9/29/21, 7:48 PM

\_\_0\_CW\_150-00MHz.html

Motorola Solutions, EME Laboratory

2021-09-29, 19:26

System Performance Check Report

Summary

Dipole	Frequency [MHz]	TSL	Power [dBm]	Dev. 1g [%]	Dev. 10g [%]
CLA-150 - SN4010	150.0	HSL	30.0	5.6	1.1

Exposure Conditions

Phantom Section, TSL	Test Distance [mm]	Band	Group, UID	Frequency [MHz], Channel Number	Conversion Factor	TSL Conductivity [S/m]	TSL Permittivity
Flat, HSL	0		, 0--	150.0, 0	12.09	0.735	51.6

Hardware Setup

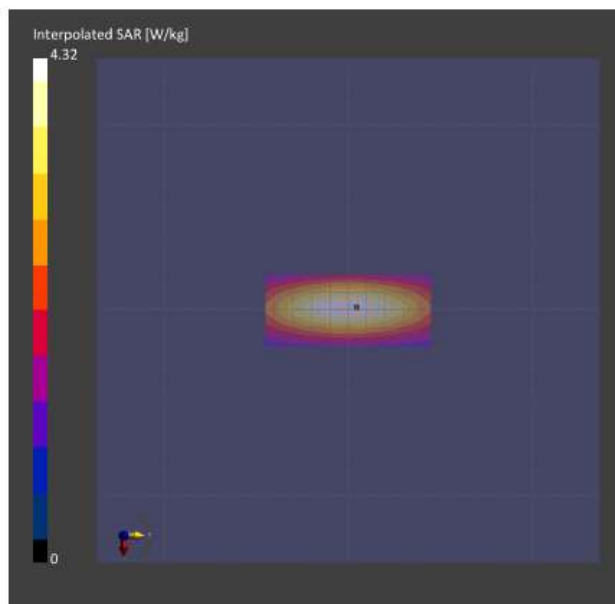
Phantom	TSL, Measured Date	Probe, Calibration Date	DAE, Calibration Date
ELI V4.0 (20deg probe tilt) - ELJ4 1016	HSL150 , 2021-Sep-29	EX3DV4 - SN7511, 2021-06-18	DAE4 Sn729, 2021-06-09

Scans Setup

	Area Scan	Zoom Scan
Grid Extents [mm]	40.0 x 90.0	30.0 x 30.0 x 30.0
Grid Steps [mm]	10.0 x 15.0	6.0 x 6.0 x 1.5
Sensor Surface [mm]	3.0	1.4
Graded Grid	Yes	Yes
Grading Ratio	1.5	1.5
MAIA	N/A	N/A
Surface Detection	VMS + 6p	VMS + 6p
Scan Method	Measured	Measured

Measurement Results

	Area Scan	Zoom Scan
Date	2021-09-29, 19:26	2021-09-29, 19:32
psSAR1g [W/Kg]	3.92	3.80
psSAR10g [W/Kg]	2.79	2.45
Power Drift [dB]	-0.04	0.00
TSL Correction	Positive / Negative	Positive / Negative



Motorola Solutions, EME Laboratory

2021-09-30, 18:55

System Performance Check Report

Summary

Dipole	Frequency [MHz]	TSL	Power [dBm]	Dev. 1g [%]	Dev. 10g [%]
CLA-150 - SN4010	150.0	HSL	30.0	6.6	2.0

Exposure Conditions

Phantom Section, TSL	Test Distance [mm]	Band	Group, UID	Frequency [MHz], Channel Number	Conversion Factor	TSL Conductivity [S/m]	TSL Permittivity
Fiat, HSL	0		, 0--	150.0, 0	12.09	0.731	51.1

Hardware Setup

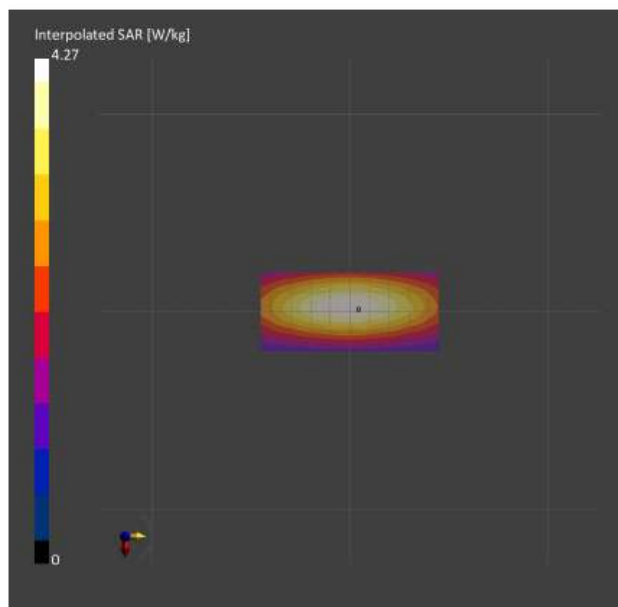
Phantom	TSL, Measured Date	Probe, Calibration Date	DAE, Calibration Date
ELI V4.0 (20deg probe tilt) - ELI4 1016	HSL150, 2021-Sep-30	EX3DV4 - SN7511, 2021-06-18	DAE4 5n729, 2021-06-09

Scans Setup

	Area Scan	Zoom Scan
Grid Extents [mm]	40.0 x 90.0	30.0 x 30.0 x 30.0
Grid Steps [mm]	10.0 x 15.0	6.0 x 6.0 x 1.5
Sensor Surface [mm]	3.0	1.4
Graded Grid	Yes	Yes
Grading Ratio	1.5	1.5
MAIA	N/A	N/A
Surface Detection	VMS + 6p	VMS + 6p
Scan Method	Measured	Measured

Measurement Results

	Area Scan	Zoom Scan
Date	2021-09-30, 18:55	2021-09-30, 19:00
psSAR1g [W/Kg]	3.91	3.84
psSAR10g [W/Kg]	2.81	2.47
Power Drift [dB]	0.00	0.01
TSL Correction	Positive / Negative	Positive / Negative



10/1/21, 10:11 PM

\_\_0\_CW\_150-00MHz.html

Motorola Solutions, EME Laboratory

2021-10-01, 22:00

System Performance Check Report

Summary

Dipole	Frequency [MHz]	TSL	Power [dBm]	Dev. 1g [%]	Dev. 10g [%]
CLA-150 - SN4010	150.0	HSL	30.0	2.6	-1.8

Exposure Conditions

Phantom Section, TSL	Test Distance [mm]	Band	Group, UID	Frequency [MHz], Channel Number	Conversion Factor	TSL Conductivity [S/m]	TSL Permittivity
Flat, HSL	0		, 0--	150.0, 0	12.09	0.725	50.1

Hardware Setup

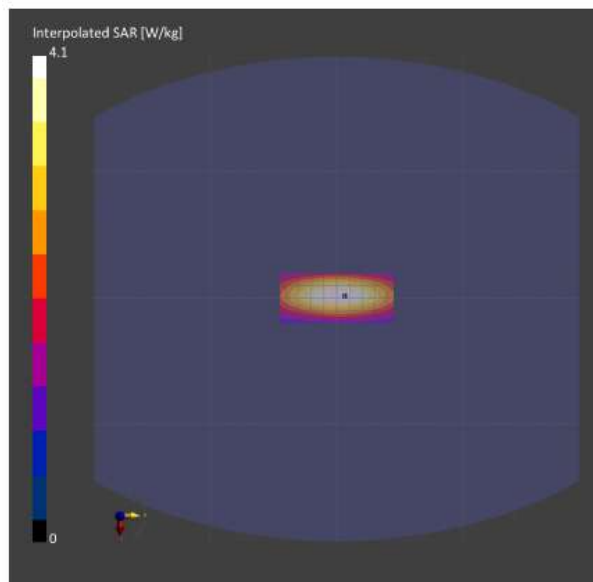
Phantom	TSL, Measured Date	Probe, Calibration Date	DAE, Calibration Date
ELI V4.0 (20deg probe tilt) - ELI4 1016	HSL150 , 2021-Oct-01	EX3DV4 - SN7511, 2021-06-18	DAE4 Sn729, 2021-06-09

Scans Setup

	Area Scan	Zoom Scan
Grid Extents [mm]	40.0 x 90.0	30.0 x 30.0 x 30.0
Grid Steps [mm]	10.0 x 15.0	6.0 x 6.0 x 1.5
Sensor Surface [mm]	3.0	1.4
Graded Grid	Yes	Yes
Grading Ratio	1.5	1.5
MAIA	N/A	N/A
Surface Detection	VMS + 6p	VMS + 6p
Scan Method	Measured	Measured

Measurement Results

	Area Scan	Zoom Scan
Date	2021-10-01, 22:00	2021-10-01, 22:05
psSAR1g [W/Kg]	3.76	3.69
psSAR10g [W/Kg]	2.69	2.38
Power Drift [dB]	0.01	0.01
TSL Correction	Positive / Negative	Positive / Negative



10/2/21, 10:08 PM

\_\_0\_CW\_150-00MHz.html

Motorola Solutions, EME Laboratory

2021-10-02, 21:58

System Performance Check Report

Summary

Dipole	Frequency [MHz]	TSL	Power [dBm]	Dev. 1g [%]	Dev. 10g [%]
CLA-150 - SN4010	150.0	HSL	30.0	2.7	-2.0

Exposure Conditions

Phantom Section, TSL	Test Distance [mm]	Band	Group, UID	Frequency [MHz], Channel Number	Conversion Factor	TSL Conductivity [S/m]	TSL Permittivity
Flat, HSL	0		, 0--	150.0, 0	12.09	0.758	50.4

Hardware Setup

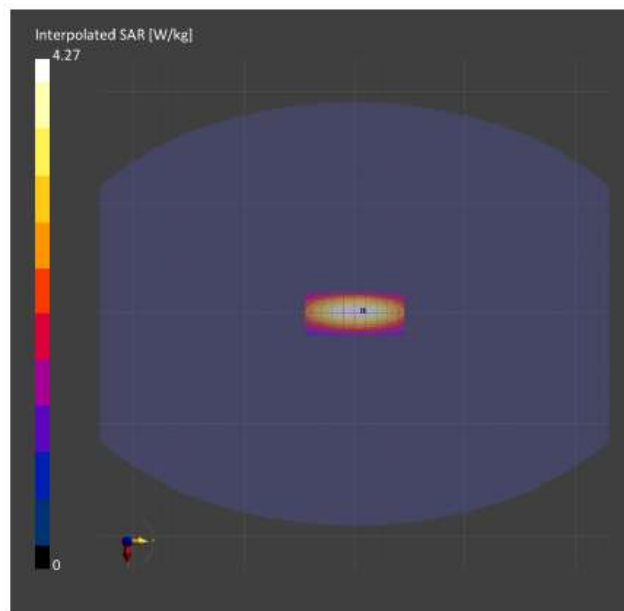
Phantom	TSL, Measured Date	Probe, Calibration Date	DAE, Calibration Date
ELI V4.0 (20deg probe tilt) - ELI4 1016	HSL150 , 2021-Oct-02	EX3DV4 - SN7511, 2021-06-18	DAE4 Sn729, 2021-06-09

Scans Setup

	Area Scan	Zoom Scan
Grid Extents [mm]	40.0 x 90.0	30.0 x 30.0 x 30.0
Grid Steps [mm]	10.0 x 15.0	6.0 x 6.0 x 1.5
Sensor Surface [mm]	3.0	1.4
Graded Grid	Yes	Yes
Grading Ratio	1.5	1.5
MAIA	N/A	N/A
Surface Detection	VMS + 6p	VMS + 6p
Scan Method	Measured	Measured

Measurement Results

	Area Scan	Zoom Scan
Date	2021-10-02, 21:58	2021-10-02, 22:04
psSAR1g [W/Kg]	3.78	3.70
psSAR10g [W/Kg]	2.70	2.37
Power Drift [dB]	0.00	0.01
TSL Correction	Positive / Negative	Positive / Negative





10/4/21, 6:52 PM

\_\_0\_CW\_150-00MHz.html

Motorola Solutions, EME Laboratory

2021-10-04, 09:21

System Performance Check Report

Summary

Dipole	Frequency [MHz]	TSL	Power [dBm]	Dev. 1g [%]	Dev. 10g [%]
CLA-150 - SN4016	150.0	HSL	30.0	4.6	0.7

Exposure Conditions

Phantom Section, TSL	Test Distance [mm]	Band	Group, UID	Frequency [MHz], Channel Number	Conversion Factor	TSL Conductivity [S/m]	TSL Permittivity
Flat, HSL	0		, 0--	150.0, 0	12.09	0.759	51.3

Hardware Setup

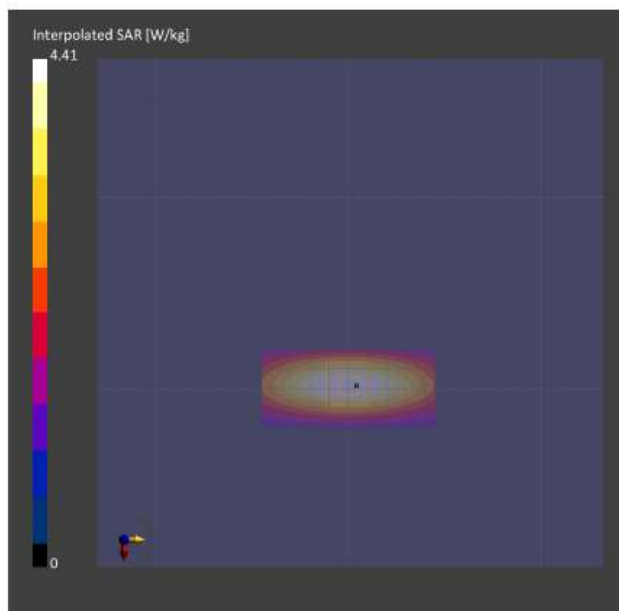
Phantom	TSL, Measured Date	Probe, Calibration Date	DAE, Calibration Date
ELI V4.0 (20deg probe tilt) - ELI4 1016	HSL150 , 2021-Oct-04	EX3DV4 - SN7511, 2021-06-18	DAE4 Sn729, 2021-06-09

Scans Setup

	Area Scan	Zoom Scan
Grid Extents [mm]	40.0 x 90.0	30.0 x 30.0 x 30.0
Grid Steps [mm]	10.0 x 15.0	6.0 x 6.0 x 1.5
Sensor Surface [mm]	3.0	1.4
Graded Grid	Yes	Yes
Grading Ratio	1.5	1.5
MAIA	N/A	N/A
Surface Detection	VMS + 6p	VMS + 6p
Scan Method	Measured	Measured

Measurement Results

	Area Scan	Zoom Scan
Date	2021-10-04, 09:21	2021-10-04, 09:26
psSAR1g [W/Kg]	3.93	3.82
psSAR10g [W/Kg]	2.81	2.46
Power Drift [dB]	0.01	0.01
TSL Correction	Positive only	Positive only



10/5/21, 9:52 AM

\_\_0\_CW\_150-00MHz.html

Motorola Solutions, EME Laboratory

2021-10-05, 09:39

System Performance Check Report

Summary

Dipole	Frequency [MHz]	TSL	Power [dBm]	Dev. 1g [%]	Dev. 10g [%]
CLA-150 - SN4010	150.0	HSL	30.0	5.2	0.8

Exposure Conditions

Phantom Section, TSL	Test Distance [mm]	Band	Group, UID	Frequency [MHz], Channel Number	Conversion Factor	TSL Conductivity [S/m]	TSL Permittivity
Flat, HSL	0		, 0--	150.0, 0	12.09	0.725	50.7

Hardware Setup

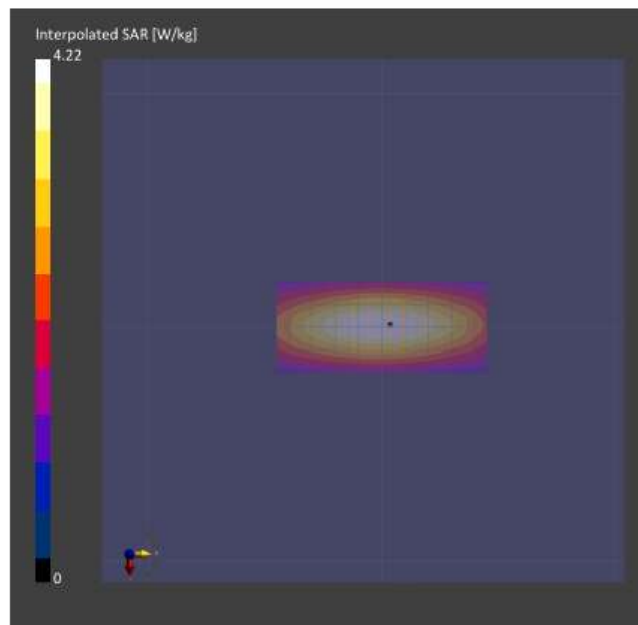
Phantom	TSL, Measured Date	Probe, Calibration Date	DAE, Calibration Date
ELI V4.0 (20deg probe tilt) - ELI4 1016	HSL150 , 2021-Oct-05	EX3DV4 - SN7511, 2021-06-18	DAE4 Sn729, 2021-06-09

Scans Setup

	Area Scan	Zoom Scan
Grid Extents [mm]	40.0 x 90.0	30.0 x 30.0 x 30.0
Grid Steps [mm]	10.0 x 15.0	6.0 x 6.0 x 1.5
Sensor Surface [mm]	3.0	1.4
Graded Grid	Yes	Yes
Grading Ratio	1.5	1.5
MAIA	N/A	N/A
Surface Detection	VMS + 6p	VMS + 6p
Scan Method	Measured	Measured

Measurement Results

	Area Scan	Zoom Scan
Date	2021-10-05, 09:39	2021-10-05, 09:45
psSAR1g [W/Kg]	3.87	3.79
psSAR10g [W/Kg]	2.76	2.44
Power Drift [dB]	0.01	0.00
TSL Correction	Positive / Negative	Positive / Negative



10/6/21, 10:37 AM

\_\_0\_CW\_150-00MHz.html

Motorola Solutions, EME Laboratory

2021-10-06, 10:19

System Performance Check Report

Summary

Dipole	Frequency [MHz]	TSL	Power [dBm]	Dev. 1g [%]	Dev. 10g [%]
CLA-150 - SN4010	150.0	HSL	30.0	9.3	5.0

Exposure Conditions

Phantom Section, TSL	Test Distance [mm]	Band	Group, UID	Frequency [MHz], Channel Number	Conversion Factor	TSL Conductivity [S/m]	TSL Permittivity
Flat, HSL	0		, 0--	150.0, 0	12.09	0.730	50.2

Hardware Setup

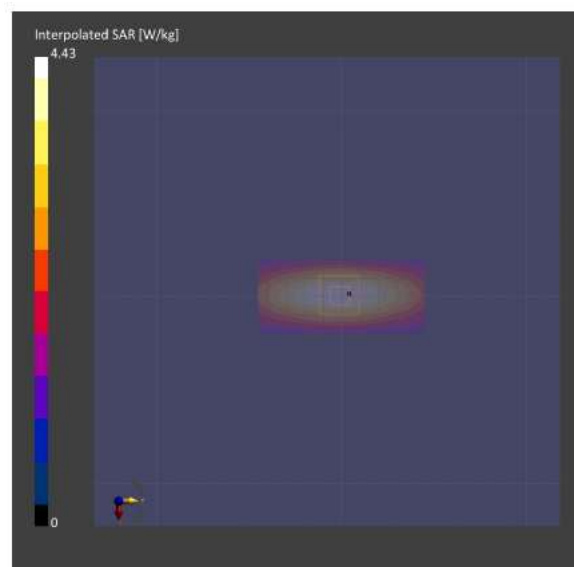
Phantom	TSL, Measured Date	Probe, Calibration Date	DAE, Calibration Date
ELI V4.0 (20deg probe tilt) - ELI4 1016	HSL150 , 2021-Oct-06	EX3DV4 - SN7511, 2021-06-18	DAE4 Sn729, 2021-06-09

Scans Setup

	Area Scan	Zoom Scan
Grid Extents [mm]	40.0 x 90.0	30.0 x 30.0 x 30.0
Grid Steps [mm]	10.0 x 15.0	6.0 x 6.0 x 1.5
Sensor Surface [mm]	3.0	1.4
Graded Grid	Yes	Yes
Grading Ratio	1.5	1.5
MAIA	N/A	N/A
Surface Detection	VMS + 6p	VMS + 6p
Scan Method	Measured	Measured

Measurement Results

	Area Scan	Zoom Scan
Date	2021-10-06, 10:19	2021-10-06, 10:25
psSAR1g [W/Kg]	4.03	3.93
psSAR10g [W/Kg]	2.88	2.54
Power Drift [dB]	0.00	0.01
TSL Correction	Positive / Negative	Positive / Negative



10/7/21, 11:03 AM

\_\_0\_CW\_150-00MHz.html

Motorola Solutions, EME Laboratory

2021-10-07, 10:50

System Performance Check Report

Summary

Dipole	Frequency [MHz]	TSL	Power [dBm]	Dev. 1g [%]	Dev. 10g [%]
CLA-150 - SN4010	150.0	HSL	30.0	10.3	6.0

Exposure Conditions

Phantom Section, TSL	Test Distance [mm]	Band	Group, UID	Frequency [MHz], Channel Number	Conversion Factor	TSL Conductivity [S/m]	TSL Permittivity
Flat, HSL	0		, 0--	150.0, 0	12.09	0.739	50.4

Hardware Setup

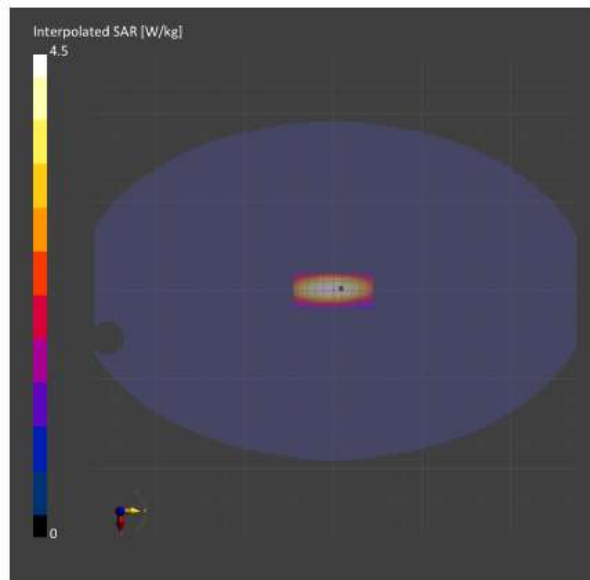
Phantom	TSL, Measured Date	Probe, Calibration Date	DAE, Calibration Date
ELI V4.0 (20deg probe tilt) - ELI4 1016	HSL150, 2021-Oct-07	EX3DV4 - SN7511, 2021-06-18	DAE4 Sn729, 2021-06-09

Scans Setup

	Area Scan	Zoom Scan
Grid Extents [mm]	40.0 x 90.0	30.0 x 30.0 x 30.0
Grid Steps [mm]	10.0 x 15.0	6.0 x 6.0 x 1.5
Sensor Surface [mm]	3.0	1.4
Graded Grid	Yes	Yes
Grading Ratio	1.5	1.5
MAIA	N/A	N/A
Surface Detection	VMS + 6p	VMS + 6p
Scan Method	Measured	Measured

Measurement Results

	Area Scan	Zoom Scan
Date	2021-10-07, 10:50	2021-10-07, 10:56
psSAR1g [W/Kg]	4.06	3.97
psSAR10g [W/Kg]	2.91	2.57
Power Drift [dB]	0.00	0.00
TSL Correction	Positive / Negative	Positive / Negative



10/8/21, 2:36 PM

\_\_0\_CW\_150-00MHz.html

Motorola Solutions, EME Laboratory

2021-10-08, 14:27

System Performance Check Report

Summary

Dipole	Frequency [MHz]	TSL	Power [dBm]	Dev. 1g [%]	Dev. 10g [%]
CLA-150 - SN4010	150.0	HSL	30.0	11.1	5.8

Exposure Conditions

Phantom Section, TSL	Test Distance [mm]	Band	Group, UID	Frequency [MHz], Channel Number	Conversion Factor	TSL Conductivity [S/m]	TSL Permittivity
Flat, HSL	0		, 0--	150.0, 0	12.09	0.740	50.9

Hardware Setup

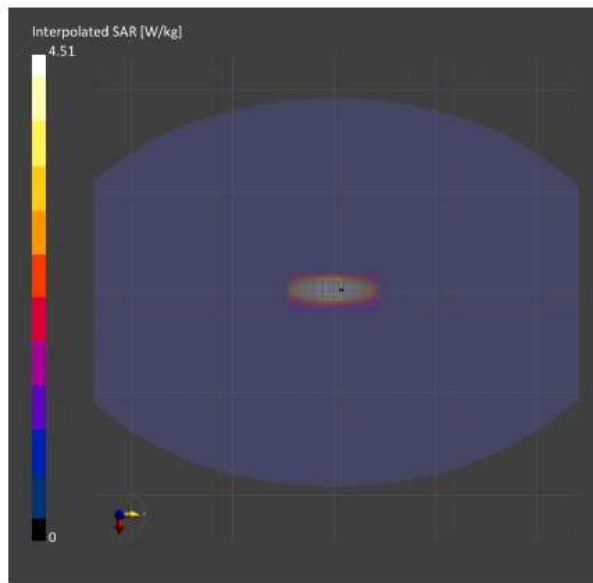
Phantom	TSL, Measured Date	Probe, Calibration Date	DAE, Calibration Date
ELI V4.0 (20deg probe tilt) - ELI4 1016	HSL150, 2021-Oct-08	EX3DV4 - SN7511, 2021-06-18	DAE4 Sn729, 2021-06-09

Scans Setup

	Area Scan	Zoom Scan
Grid Extents [mm]	40.0 x 90.0	30.0 x 30.0 x 30.0
Grid Steps [mm]	10.0 x 15.0	6.0 x 6.0 x 1.5
Sensor Surface [mm]	3.0	1.4
Graded Grid	Yes	Yes
Grading Ratio	1.5	1.5
MAIA	N/A	N/A
Surface Detection	VMS + 6p	VMS + 6p
Scan Method	Measured	Measured

Measurement Results

	Area Scan	Zoom Scan
Date	2021-10-08, 14:27	2021-10-08, 14:33
psSAR1g [W/Kg]	4.09	4.00
psSAR10g [W/Kg]	2.93	2.56
Power Drift [dB]	0.00	0.01
TSL Correction	Positive / Negative	Positive / Negative



10/9/21, 9:25 PM

\_\_0\_CW\_150-00MHz.html

Motorola Solutions, EME Laboratory

2021-10-09, 21:16

Measurement Report for Device, ,, , CW, Channel 0 (150.0 MHz)

Device Under Test Properties

Model	Serial Number	Dimensions [mm]
Device		50.0 x 10.0 x 8.0

Exposure Conditions

Phantom Section, TSL	Position, Test Distance [mm]	Band	Group, UID	Frequency [MHz], Channel Number	Conversion Factor	TSL Conductivity [S/m]	TSL Permittivity
Flat, HSL	,		, 0--	150.0, 0	12.09	0.731	51.5

Hardware Setup

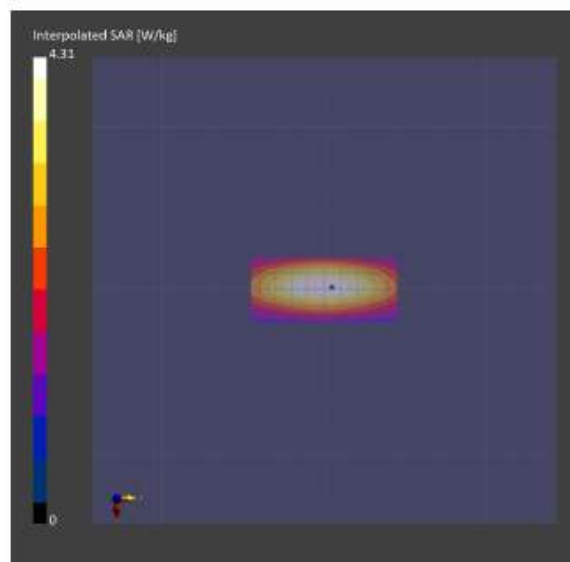
Phantom	TSL, Measured Date	Probe, Calibration Date	DAE, Calibration Date
ELI V4.0 (20deg probe tilt) - ELI4 1016	HSL150 , 2021-Oct-09	EX3DV4 - SN7511 , 2021-06-18	DAE4 Sn729, 2021-06-09

Scans Setup

	Area Scan	Zoom Scan
Grid Extents [mm]	40.0 x 90.0	30.0 x 30.0 x 30.0
Grid Steps [mm]	10.0 x 15.0	6.0 x 6.0 x 1.5
Sensor Surface [mm]	3.0	1.4
Graded Grid	Yes	Yes
Grading Ratio	1.5	1.5
MAIA	N/A	N/A
Surface Detection	VMS + 6p	VMS + 6p
Scan Method	Measured	Measured

Measurement Results

	Area Scan	Zoom Scan
Date	2021-10-09, 21:16	2021-10-09, 21:22
psSAR1g [W/Kg]	3.95	3.87
psSAR10g [W/Kg]	2.82	2.49
Power Drift [dB]	0.01	0.01
TSL Correction	Positive / Negative	Positive / Negative
M2/M1 [%]		79.3
Dist 3dB Peak [mm]		16.8



10/11/21, 9:46 AM

\_\_0\_CW\_150-00MHz.html

Motorola Solutions, EME Laboratory

2021-10-11, 09:36

System Performance Check Report

Summary

Dipole	Frequency [MHz]	TSL	Power [dBm]	Dev. 1g [%]	Dev. 10g [%]
CLA-150 - SN4010	150.0	HSL	30.0	-3.8	-8.0

Exposure Conditions

Phantom Section, TSL	Test Distance [mm]	Band	Group, UID	Frequency [MHz], Channel Number	Conversion Factor	TSL Conductivity [S/m]	TSL Permittivity
Flat, HSL	0		, 0--	150.0, 0	12.09	0.766	51.3

Hardware Setup

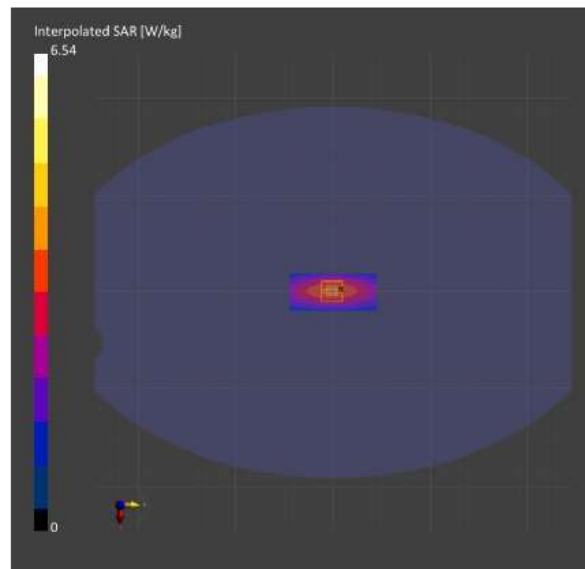
Phantom	TSL, Measured Date	Probe, Calibration Date	DAE, Calibration Date
ELI V4.0 (20deg probe tilt) - ELI4 1016	HSL150 , 2021-Oct-11	EX3DV4 - SN7511 , 2021-06-18	DAE4 Sn729, 2021-06-09

Scans Setup

	Area Scan	Zoom Scan
Grid Extents [mm]	40.0 x 90.0	30.0 x 30.0 x 30.0
Grid Steps [mm]	10.0 x 15.0	6.0 x 6.0 x 1.5
Sensor Surface [mm]	3.0	1.4
Graded Grid	Yes	Yes
Grading Ratio	1.5	1.5
MAIA	N/A	N/A
Surface Detection	VMS + 6p	VMS + 6p
Scan Method	Measured	Measured

Measurement Results

	Area Scan	Zoom Scan
Date	2021-10-11, 09:36	2021-10-11, 09:42
psSAR1g [W/Kg]	3.55	3.46
psSAR10g [W/Kg]	2.53	2.23
Power Drift [dB]	0.01	0.01
TSL Correction	Positive / Negative	Positive / Negative



10/13/21, 10:04 AM

\_\_0\_CW\_150-00MHz.html

Motorola Solutions, EME Laboratory

2021-10-13, 09:20

System Performance Check Report

Summary

Dipole	Frequency [MHz]	TSL	Power [dBm]	Dev. 1g [%]	Dev. 10g [%]
CLA-150 - SN4010	150.0	HSL	30.0	-4.1	-8.8

Exposure Conditions

Phantom Section, TSL	Test Distance [mm]	Band	Group, UID	Frequency [MHz], Channel Number	Conversion Factor	TSL Conductivity [S/m]	TSL Permittivity
Flat, HSL	0		, 0--	150.0, 0	12.09	0.763	51.9

Hardware Setup

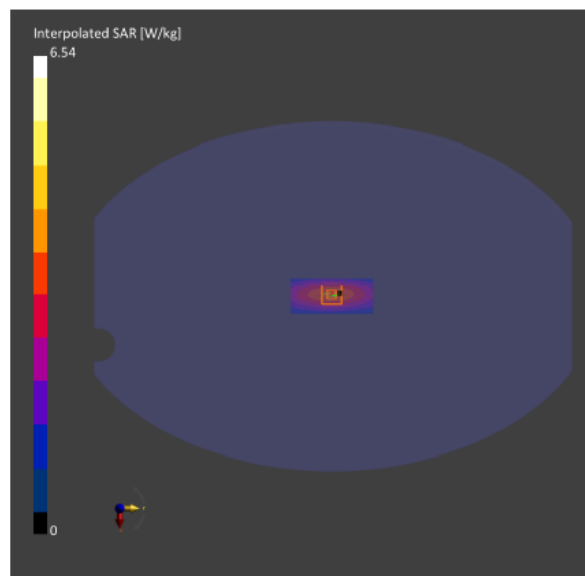
Phantom	TSL, Measured Date	Probe, Calibration Date	DAE, Calibration Date
ELI V4.0 (20deg probe tilt) - ELI4 1016	HSL150 , 2021-Oct-13	EX3DV4 - SN7511, 2021-06-18	DAE4 Sn729, 2021-06-09

Scans Setup

	Area Scan	Zoom Scan
Grid Extents [mm]	40.0 x 90.0	30.0 x 30.0 x 30.0
Grid Steps [mm]	10.0 x 15.0	6.0 x 6.0 x 1.5
Sensor Surface [mm]	3.0	1.4
Graded Grid	Yes	Yes
Grading Ratio	1.5	1.5
MAIA	N/A	N/A
Surface Detection	VMS + 6p	VMS + 6p
Scan Method	Measured	Measured

Measurement Results

	Area Scan	Zoom Scan
Date	2021-10-13, 09:20	2021-10-13, 09:26
psSAR1g [W/Kg]	3.53	3.45
psSAR10g [W/Kg]	2.52	2.21
Power Drift [dB]	0.01	0.01
TSL Correction	Positive / Negative	Positive / Negative





10/16/21, 10:22 AM

\_\_0\_CW\_150-00MHz.html

Motorola Solutions, EME Laboratory

2021-10-16, 09:58

System Performance Check Report

Summary

Dipole	Frequency [MHz]	TSL	Power [dBm]	Dev. 1g [%]	Dev. 10g [%]
CLA-150 - SN4010	150.0	HSL	30.0	-3.4	-7.6

Exposure Conditions

Phantom Section, TSL	Test Distance [mm]	Band	Group, UID	Frequency [MHz], Channel Number	Conversion Factor	TSL Conductivity [S/m]	TSL Permittivity
Flat, HSL	0		, 0--	150.0, 0	12.09	0.749	50.3

Hardware Setup

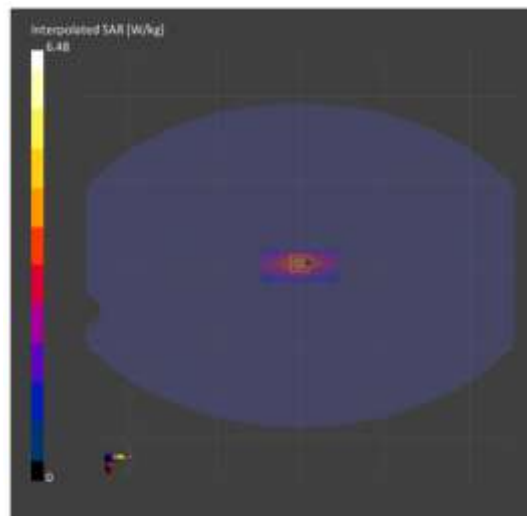
Phantom	TSL, Measured Date	Probe, Calibration Date	DAE, Calibration Date
ELI V4.0 (20deg probe tilt) - ELI4 1016	HSL150 , 2021-Oct-16	EX3DV4 - SN7511, 2021-06-18	DAE4 Sn729, 2021-06-09

Scans Setup

	Area Scan	Zoom Scan
Grid Extents [mm]	40.0 x 90.0	30.0 x 30.0 x 30.0
Grid Steps [mm]	10.0 x 15.0	6.0 x 6.0 x 1.5
Sensor Surface [mm]	3.0	1.4
Graded Grid	Yes	Yes
Grading Ratio	1.5	1.5
MAIA	N/A	N/A
Surface Detection	VMS + 6p	VMS + 6p
Scan Method	Measured	Measured

Measurement Results

	Area Scan	Zoom Scan
Date	2021-10-16, 09:58	2021-10-16, 10:04
psSAR1g [W/Kg]	3.55	3.48
psSAR10g [W/Kg]	2.54	2.24
Power Drift [dB]	0.01	0.00
TSL Correction	Positive / Negative	Positive / Negative



## **Appendix E DUT Scans**

### Assessments at the Body with Body worn RLN5644A (Table 18)

Motorola Solutions, EME Laboratory

2021-09-28, 15:29

Measurement Report for AAH01JDC9JA2AN (PMUD3231C), 752TXR1427, BACK, Custom Band, CW, Channel 150800 (150.8 MHz)

**Device Under Test Properties**

Model	Serial Number	Dimensions [mm]
AAH01JDC9JA2AN (PMUD3231C)	752TXR1427	277.0 x 63.0 x 40.0

**Exposure Conditions**

Phantom Section, TSL	Position, Test Distance [mm]	Band	Group, UID	Frequency [MHz], Channel Number	Conversion Factor	TSL Conductivity [S/m]	TSL Permittivity
Flat, HSL	BACK, 0.00	Custom Band	CW, 0--	150.8, 150800	12.09	0.731	51.2

**Hardware Setup**

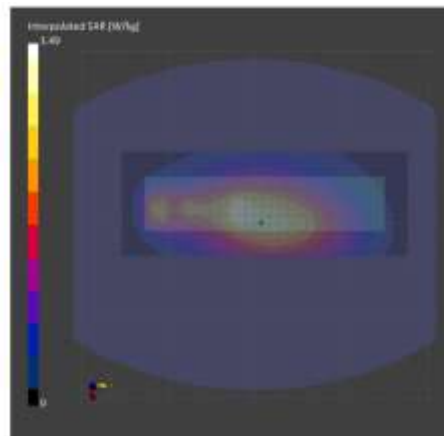
Phantom	TSL, Measured Date	Probe, Calibration Date	DAE, Calibration Date
ELI V4.0 (20deg probe tilt) - ELI4 1016	HSL150 , 2021-Sep-27	EX3DV4 - SN7511 , 2021-06-18	DAE4 Sn729, 2021-06-09

**Scans Setup**

	Area Scan	Zoom Scan
Grid Extents [mm]	120.0 x 330.0	30.0 x 30.0 x 30.0
Grid Steps [mm]	15.0 x 15.0	6.0 x 6.0 x 1.5
Sensor Surface [mm]	3.0	1.4
Graded Grid	Yes	Yes
Grading Ratio	1.5	1.5
MAIA	N/A	N/A
Surface Detection	VMS + 6p	VMS + 6p
Scan Method	Measured	Measured

**Measurement Results**

	Area Scan	Zoom Scan
Date	2021-09-28, 15:29	2021-09-28, 15:40
psSAR1g [W/Kg]	1.38	1.48
psSAR10g [W/Kg]	1.02	0.980
Power Drift [dB]	-0.03	-0.53
TSL Correction	Positive only	Positive only
M2/M1 [%]		72.9
Dist 3dB Peak [mm]		18.0



### Assessments at the Body with Body worn HLN8255B (Table 19)

Motorola Solutions, EME Laboratory

2021-09-29, 09:22

Measurement Report for AAH01JDC9JA2AN (PMUD3231C), 752TXR1427,BACK, Custom Band, CW, Channel 150800 (150.8 MHz)

**Device Under Test Properties**

Model	Serial Number	Dimensions [mm]
AAH01JDC9JA2AN (PMUD3231C)	752TXR1427	277.0 x 63.0 x 40.0

**Exposure Conditions**

Phantom Section, TSL	Position, Test Distance [mm]	Band	Group, UID	Frequency [MHz], Channel Number	Conversion Factor	TSL Conductivity [S/m]	TSL Permittivity
Flat, HSL	BACK, 0.00	Custom Band	CW, 0--	150.8, 150800	12.09	0.736	51.8

**Hardware Setup**

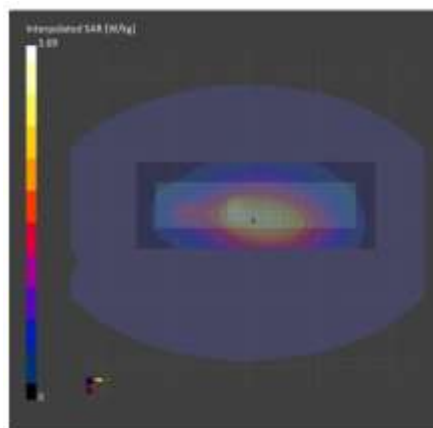
Phantom	TSL, Measured Date	Probe, Calibration Date	DAE, Calibration Date
ELI V4.0 (20deg probe tilt) - ELI4 1016	HSL150 , 2021-Sep-28	EX3DV4 - SN7511 , 2021-06-18	DAE4 Sn729, 2021-06-09

**Scans Setup**

	Area Scan	Zoom Scan
Grid Extents [mm]	120.0 x 330.0	30.0 x 30.0 x 30.0
Grid Steps [mm]	15.0 x 15.0	6.0 x 6.0 x 1.5
Sensor Surface [mm]	3.0	1.4
Graded Grid	Yes	Yes
Grading Ratio	1.5	1.5
MAIA	N/A	N/A
Surface Detection	VMS + 6p	VMS + 6p
Scan Method	Measured	Measured

**Measurement Results**

	Area Scan	Zoom Scan
Date	2021-09-29, 09:22	2021-09-29, 09:33
psSAR1g [W/Kg]	1.53	1.58
psSAR10g [W/Kg]	1.11	1.05
Power Drift [dB]	0.00	-0.20
TSL Correction	Positive only	Positive only
M2/M1 [%]		72.6
Dist 3dB Peak [mm]		13.4



### Assessments at the Body with Body worn HLN6602A (Table 20)

Motorola Solutions, EME Laboratory

2021-10-01, 01:29

Measurement Report for AAH01JDC9JA2AN (PMUD3231C), 752TXR1427, BACK, Custom Band, CW, Channel 150800 (150.8 MHz)

**Device Under Test Properties**

Model	Serial Number	Dimensions [mm]
AAH01JDC9JA2AN (PMUD3231C)	752TXR1427	277.0 x 63.0 x 40.0

**Exposure Conditions**

Phantom Section, TSL	Position, Test Distance [mm]	Band	Group, UID	Frequency [MHz], Channel Number	Conversion Factor	TSL Conductivity [S/m]	TSL Permittivity
Flat, HSL	BACK, 0.00	Custom Band	CW, 0--	150.8, 150800	12.09	0.732	51.1

**Hardware Setup**

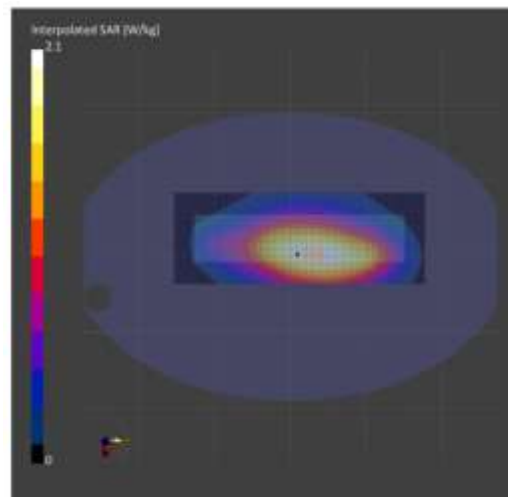
Phantom	TSL, Measured Date	Probe, Calibration Date	DAE, Calibration Date
ELI V4.0 (20deg probe tilt) - ELI4 1016	HSL150 , 2021-Sep-30	EX3DV4 - SN7511, 2021-06-18	DAE4 Sn729, 2021-06-09

**Scans Setup**

	Area Scan	Zoom Scan
Grid Extents [mm]	120.0 x 330.0	30.0 x 30.0 x 30.0
Grid Steps [mm]	15.0 x 15.0	6.0 x 6.0 x 1.5
Sensor Surface [mm]	3.0	1.4
Graded Grid	Yes	Yes
Grading Ratio	1.5	1.5
MAIA	N/A	N/A
Surface Detection	VMS + 6p	VMS + 6p
Scan Method	Measured	Measured

**Measurement Results**

	Area Scan	Zoom Scan
Date	2021-10-01, 01:29	2021-10-01, 01:36
psSAR1g [W/Kg]	1.33	1.35
psSAR10g [W/Kg]	1.03	1.01
Power Drift [dB]	-0.05	-0.42
TSL Correction	Positive only	Positive only
M2/M1 [%]		83.7
Dist 3dB Peak [mm]		> 15.0



### Assessments at the Body with Body worn RLN4815A (Table 21)

Motorola Solutions, EME Laboratory

Unknown

Measurement Report for AAH01JDC9JA2AN (PMUD3231C), 752TXR1427, BACK, Custom Band, CW, Channel 150800 (150.8 MHz)

**Device Under Test Properties**

Model	Serial Number	Dimensions [mm]
AAH01JDC9JA2AN (PMUD3231C)	752TXR1427	277.0 x 63.0 x 40.0

**Exposure Conditions**

Phantom Section, TSL	Position, Test Distance [mm]	Band	Group, UID	Frequency [MHz], Channel Number	Conversion Factor	TSL Conductivity [S/m]	TSL Permittivity
Flat, HSL	BACK, 0.00	Custom Band	CW, 0--	150.8, 150800	12.09	0.726	50.1

**Hardware Setup**

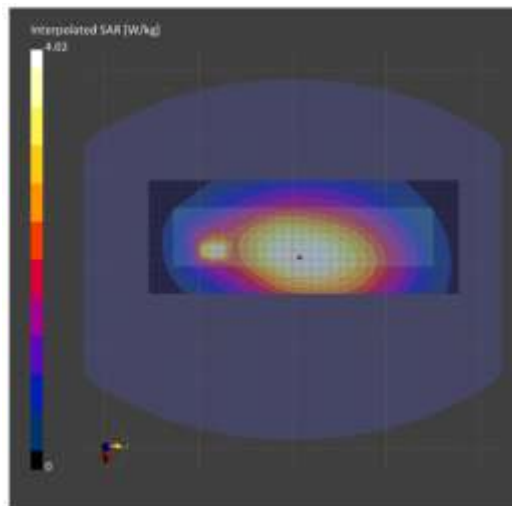
Phantom	TSL, Measured Date	Probe, Calibration Date	DAE, Calibration Date
ELI V4.0 (20deg probe tilt) - ELI4 1016	HSL150 , 2021-Oct-01	EX3DV4 - SN7511 , 2021-06-18	DAE4 Sn729, 2021-06-09

**Scans Setup**

	Area Scan	Zoom Scan
Grid Extents [mm]	120.0 x 330.0	30.0 x 30.0 x 30.0
Grid Steps [mm]	15.0 x 15.0	5.7 x 5.7 x 1.5
Sensor Surface [mm]	3.0	1.4
Graded Grid	Yes	Yes
Grading Ratio	1.5	1.5
MAIA	N/A	N/A
Surface Detection	VMS + 6p	VMS + 6p
Scan Method	Measured	Measured

**Measurement Results**

	Area Scan	Zoom Scan
Date	Unknown	Unknown
psSAR1g [W/Kg]	0.911	1.09
psSAR10g [W/Kg]	0.703	0.531
Power Drift [dB]	-0.19	-0.07
TSL Correction	Positive only	Positive only
M2/M1 [%]		53.2
Dist 3dB Peak [mm]		5.7



### Assessments at the Body with Body worn RLN4570A (Table 22)

Motorola Solutions, EME Laboratory

2021-10-04, 21:02

Measurement Report for AAH01JDC9JA2AN (PMUD3231C), 752TXR1427, BACK, Custom Band, CW, Channel 150800 (150.8 MHz)

**Device Under Test Properties**

Model	Serial Number	Dimensions [mm]
AAH01JDC9JA2AN (PMUD3231C)	752TXR1427	212.0 x 63.0 x 40.0

**Exposure Conditions**

Phantom Section, TSL	Position, Test Distance [mm]	Band	Group, UID	Frequency [MHz], Channel Number	Conversion Factor	TSL Conductivity [S/m]	TSL Permittivity
Flat, HSL	BACK, 0.00	Custom Band	CW, 0--	150.8, 150800	12.09	0.760	51.2

**Hardware Setup**

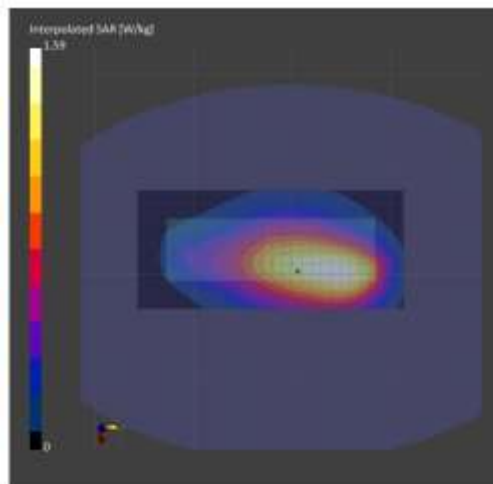
Phantom	TSL, Measured Date	Probe, Calibration Date	DAE, Calibration Date
ELI V4.0 (20deg probe tilt) - ELI4 1016	HSL150 , 2021-Oct-04	EX3DV4 - SN7511, 2021-06-18	DAE4 Sn729, 2021-06-09

**Scans Setup**

	Area Scan	Zoom Scan
Grid Extents [mm]	120.0 x 270.0	30.0 x 30.0 x 30.0
Grid Steps [mm]	15.0 x 15.0	6.0 x 6.0 x 1.5
Sensor Surface [mm]	3.0	1.4
Graded Grid	Yes	Yes
Grading Ratio	1.5	1.5
MAIA	N/A	N/A
Surface Detection	VMS + 6p	VMS + 6p
Scan Method	Measured	Measured

**Measurement Results**

	Area Scan	Zoom Scan
Date	2021-10-04, 21:02	2021-10-04, 21:18
psSAR1g [W/Kg]	1.45	1.54
psSAR10g [W/Kg]	1.09	1.04
Power Drift [dB]	-0.04	-0.41
TSL Correction	Positive only	Positive only
M2/M1 [%]		72.9
Dist 3dB Peak [mm]		> 15.0



### Assessments at the Body with Body worn RLN5383A w/ NTN5243A (Table 23)

Motorola Solutions, EME Laboratory

2021-10-05, 16:51

Measurement Report for AAH01JDC9JA2AN (PMUD3231C), 752TXR1427, BACK, Custom Band, CW, Channel 150800 (150.8 MHz)

**Device Under Test Properties**

Model	Serial Number	Dimensions [mm]
AAH01JDC9JA2AN (PMUD3231C)	752TXR1427	277.0 x 63.0 x 40.0

**Exposure Conditions**

Phantom Section, TSL	Position, Test Distance [mm]	Band	Group, UID	Frequency [MHz], Channel Number	Conversion Factor	TSL Conductivity [S/m]	TSL Permittivity
Flat, HSL	BACK, 0.00	Custom Band	CW, 0--	150.8, 150800	12.09	0.726	50.7

**Hardware Setup**

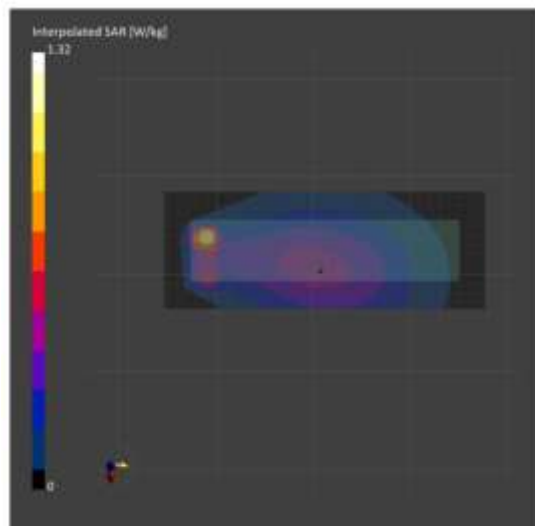
Phantom	TSL, Measured Date	Probe, Calibration Date	DAE, Calibration Date
ELI V4.0 (20deg probe tilt) - ELI4 1016	HSL150 , 2021-Oct-05	EX3DV4 - SN7511, 2021-06-18	DAE4 Sn729, 2021-06-09

**Scans Setup**

	Area Scan	Zoom Scan
Grid Extents [mm]	120.0 x 330.0	30.0 x 30.0 x 30.0
Grid Steps [mm]	15.0 x 15.0	4.8 x 4.8 x 1.4
Sensor Surface [mm]	3.0	1.4
Graded Grid	Yes	Yes
Grading Ratio	1.5	1.4
MAIA	N/A	N/A
Surface Detection	VMS + 6p	VMS + 6p
Scan Method	Measured	Measured

**Measurement Results**

	Area Scan	Zoom Scan
Date	2021-10-05, 16:51	2021-10-05, 17:03
psSAR1g [W/Kg]	1.08	2.29
psSAR10g [W/Kg]	0.625	0.664
Power Drift [dB]	-0.01	0.08
TSL Correction	Positive only	Positive only
M2/M1 [%]		45.3
Dist 3dB Peak [mm]		5.2





### Assessments at the Body with Body worn RLN5384B w/ NTN5243A (Table 24)

Motorola Solutions, EME Laboratory

2021-10-06, 11:08

Measurement Report for AAH01JDC9JA2AN (PMUD3231C), 752TXR1427, BACK, Custom Band, CW, Channel 150800 (150.8 MHz)

**Device Under Test Properties**

Model	Serial Number	Dimensions [mm]
AAH01JDC9JA2AN (PMUD3231C)	752TXR1427	277.0 x 63.0 x 45.0

**Exposure Conditions**

Phantom Section, TSL	Position, Test Distance [mm]	Band	Group, UID	Frequency [MHz], Channel Number	Conversion Factor	TSL Conductivity [S/m]	TSL Permittivity
Flat, HSL	BACK, 0.00	Custom Band	CW, 0--	150.8, 150800	12.09	0.731	50.2

**Hardware Setup**

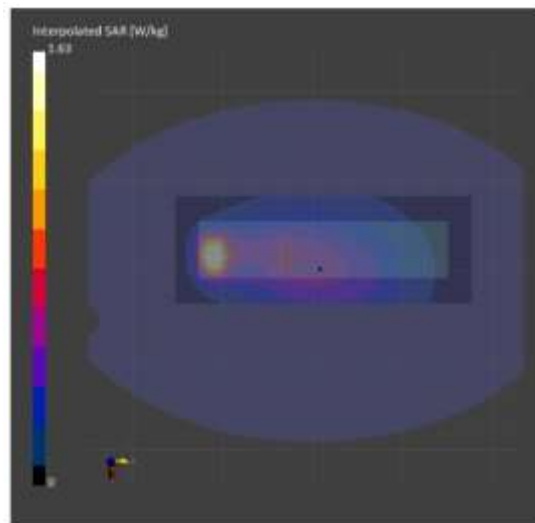
Phantom	TSL, Measured Date	Probe, Calibration Date	DAE, Calibration Date
ELI V4.0 (20deg probe tilt) - ELI4 1016	HSL150 , 2021-Oct-06	EX3DV4 - SN7511, 2021-06-18	DAE4 Sn729, 2021-06-09

**Scans Setup**

	Area Scan	Zoom Scan
Grid Extents [mm]	120.0 x 330.0	30.0 x 30.0 x 30.0
Grid Steps [mm]	15.0 x 15.0	6.0 x 6.0 x 1.5
Sensor Surface [mm]	3.0	1.4
Graded Grid	Yes	Yes
Grading Ratio	1.5	1.5
MAIA	N/A	N/A
Surface Detection	VMS + 6p	VMS + 6p
Scan Method	Measured	Measured

**Measurement Results**

	Area Scan	Zoom Scan
Date	2021-10-06, 11:08	2021-10-06, 11:15
psSAR1g [W/Kg]	1.50	1.60
psSAR10g [W/Kg]	1.04	0.814
Power Drift [dB]	-0.04	-0.50
TSL Correction	Positive only	Positive only
M2/M1 [%]		59.8
Dist 3dB Peak [mm]		10.7



### Assessments at the Body with Body worn HLN9701B w/ NTN5243A (Table 25)

Motorola Solutions, EME Laboratory

2021-10-07, 03:21

Measurement Report for AAH01JDC9JA2AN (PMUD3231C), 752TXR1427, BACK, Custom Band, CW, Channel 150800 (150.8 MHz)

#### Device Under Test Properties

Model	Serial Number	Dimensions [mm]
AAH01JDC9JA2AN (PMUD3231C)	752TXR1427	277.0 x 63.0 x 40.0

#### Exposure Conditions

Phantom Section, TSL	Position, Test Distance [mm]	Band	Group, UID	Frequency [MHz], Channel Number	Conversion Factor	TSL Conductivity [S/m]	TSL Permittivity
Flat, HSL	BACK, 0.00	Custom Band	CW, 0--	150.8, 150800	12.09	0.731	50.2

#### Hardware Setup

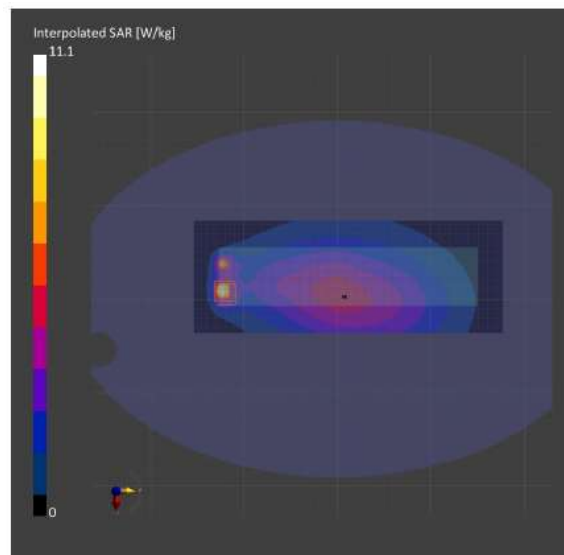
Phantom	TSL, Measured Date	Probe, Calibration Date	DAE, Calibration Date
ELI V4.0 (20deg probe tilt) - ELI4 1016	HSL150, 2021-Oct-06	EX3DV4 - SN7511, 2021-06-18	DAE4 Sn729, 2021-06-09

#### Scans Setup

	Area Scan	Zoom Scan
Grid Extents [mm]	120.0 x 330.0	30.0 x 30.0 x 30.0
Grid Steps [mm]	15.0 x 15.0	4.0 x 4.0 x 1.4
Sensor Surface [mm]	3.0	1.4
Graded Grid	Yes	Yes
Grading Ratio	1.5	1.4
MAIA	N/A	N/A
Surface Detection	VMS + 6p	VMS + 6p
Scan Method	Measured	Measured

#### Measurement Results

	Area Scan	Zoom Scan
Date	2021-10-07, 03:21	2021-10-07, 03:36
psSAR1g [W/Kg]	1.17	1.71
psSAR10g [W/Kg]	0.627	0.513
Power Drift [dB]	-0.02	0.07
TSL Correction	Positive only	Positive only
M2/M1 [%]		44.4
Dist 3dB Peak [mm]		5.1



### Assessments at the Face (Table 27)

Motorola Solutions, EME Laboratory

2021-10-08, 14:54

Measurement Report for AAH01JDC9JA2AN (PMUD3231C), 752TXR1427,FRONT, Custom Band, CW, Channel 150800 (150.8 MHz)

#### Device Under Test Properties

Model	Serial Number	Dimensions [mm]
AAH01JDC9JA2AN (PMUD3231C)	752TXR1427	277.0 x 63.0 x 40.0

#### Exposure Conditions

Phantom Section, TSL	Position, Test Distance [mm]	Band	Group, UID	Frequency [MHz], Channel Number	Conversion Factor	TSL Conductivity [S/m]	TSL Permittivity
Flat, HSL	FRONT, 25.00	Custom Band	CW, 0--	150.8, 150800	12.09	0.741	50.8

#### Hardware Setup

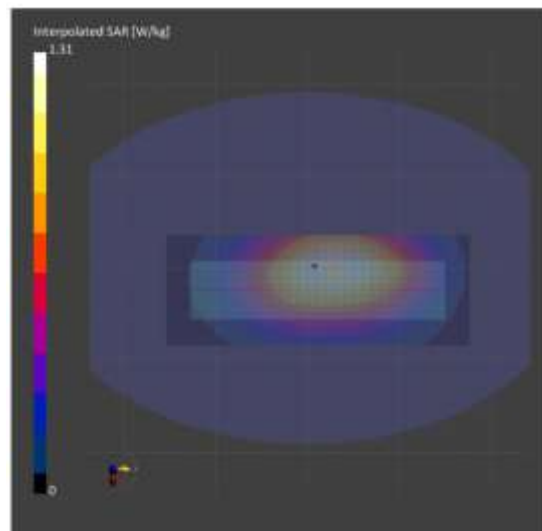
Phantom	TSL, Measured Date	Probe, Calibration Date	DAE, Calibration Date
ELI V4.0 (20deg probe tilt) - ELI4 1016	HSL150 , 2021-Oct-08	EX3DV4 - SN7511, 2021-06-18	DAE4 Sn729, 2021-06-09

#### Scans Setup

	Area Scan	Zoom Scan
Grid Extents [mm]	120.0 x 330.0	30.0 x 30.0 x 30.0
Grid Steps [mm]	15.0 x 15.0	6.0 x 6.0 x 1.5
Sensor Surface [mm]	3.0	1.4
Graded Grid	Yes	Yes
Grading Ratio	1.5	1.5
MAIA	N/A	N/A
Surface Detection	VMS + 6p	VMS + 6p
Scan Method	Measured	Measured

#### Measurement Results

	Area Scan	Zoom Scan
Date	2021-10-08, 14:54	2021-10-08, 15:01
psSAR1g [W/Kg]	1.22	1.23
psSAR10g [W/Kg]	0.941	0.941
Power Drift [dB]	-0.05	-0.14
TSL Correction	Positive only	Positive only
M2/M1 [%]		83.1
Dist 3dB Peak [mm]		> 15.0



### Assessment for Outside FCC Range and ISED, Canada – Body configuration (Table 28)

Motorola Solutions, EME Laboratory

2021-10-10, 03:19

Measurement Report for AAH01JDC9JA2AN (PMUD3231C), 752TXR1427, BACK, CLA150, CW, Channel 38 (138.0 MHz)

**Device Under Test Properties**

Model	Serial Number	Dimensions [mm]
AAH01JDC9JA2AN (PMUD3231C)	752TXR1427	267.0 x 63.0 x 40.0

**Exposure Conditions**

Phantom Section, TSL	Position, Test Distance [mm]	Band	Group, UID	Frequency [MHz], Channel Number	Conversion Factor	TSL Conductivity [S/m]	TSL Permittivity
Flat, HSL	BACK, 0.00	CLA150	CW, 0--	138.0, 38	12.09	0.722	52.1

**Hardware Setup**

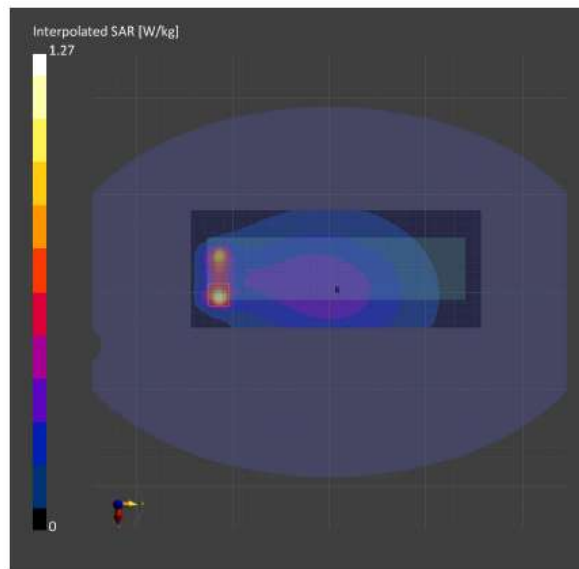
Phantom	TSL, Measured Date	Probe, Calibration Date	DAE, Calibration Date
ELI V4.0 (20deg probe tilt) - ELI4 1016	HSL150, 2021-Oct-09	EX3DV4 - SN7511, 2021-06-18	DAE4 Sn729, 2021-06-09

**Scans Setup**

	Area Scan	Zoom Scan
Grid Extents [mm]	120.0 x 300.0	30.0 x 30.0 x 30.0
Grid Steps [mm]	15.0 x 15.0	4.2 x 4.2 x 1.4
Sensor Surface [mm]	3.0	1.4
Graded Grid	Yes	Yes
Grading Ratio	1.5	1.4
MAIA	N/A	N/A
Surface Detection	VMS + 6p	VMS + 6p
Scan Method	Measured	Measured

**Measurement Results**

	Area Scan	Zoom Scan
Date	2021-10-10, 03:19	2021-10-10, 03:34
psSAR1g [W/Kg]	1.00	2.18
psSAR10g [W/Kg]	0.566	0.600
Power Drift [dB]	-0.18	-0.28
TSL Correction	Positive only	Positive only
M2/M1 [%]		42.2
Dist 3dB Peak [mm]		5.0



### Assessment for Outside FCC Range and ISED, Canada – Face configuration (Table 28)

Motorola Solutions, EME Laboratory

2021-10-09, 23:31

Measurement Report for AAH01JDC9JA2AN (PMUD3231C), 752TXR1427,FRONT, CLA150, CW, Channel 38 (138.0 MHz)

**Device Under Test Properties**

Model	Serial Number	Dimensions [mm]
AAH01JDC9JA2AN (PMUD3231C)	752TXR1427	267.0 x 63.0 x 45.0

**Exposure Conditions**

Phantom Section, TSL	Position, Test Distance [mm]	Band	Group, UID	Frequency [MHz], Channel Number	Conversion Factor	TSL Conductivity [S/m]	TSL Permittivity
Flat, HSL	FRONT, 25.00	CLA150	CW, 0--	138.0, 38	12.09	0.722	52.1

**Hardware Setup**

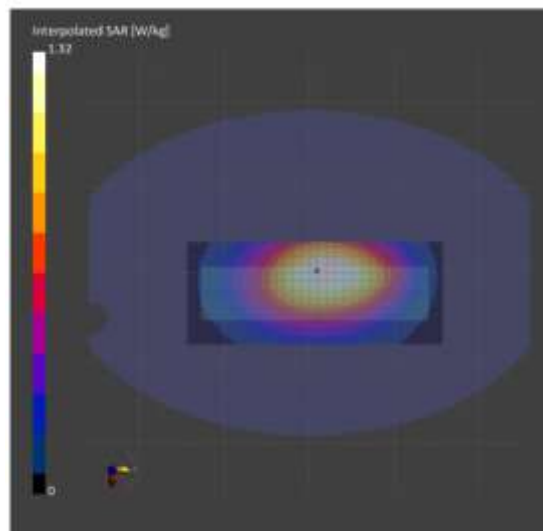
Phantom	TSL, Measured Date	Probe, Calibration Date	DAE, Calibration Date
ELI V4.0 (20deg probe tilt) - ELI4 1016	HSL150 , 2021-Oct-09	EX3DV4 - SN7511, 2021-06-18	DAE4 Sn729, 2021-06-09

**Scans Setup**

	Area Scan	Zoom Scan
Grid Extents [mm]	120.0 x 300.0	30.0 x 30.0 x 30.0
Grid Steps [mm]	15.0 x 15.0	6.0 x 6.0 x 1.5
Sensor Surface [mm]	3.0	1.4
Graded Grid	Yes	Yes
Grading Ratio	1.5	1.5
MAIA	N/A	N/A
Surface Detection	VMS + 6p	VMS + 6p
Scan Method	Measured	Measured

**Measurement Results**

	Area Scan	Zoom Scan
Date	2021-10-09, 23:31	2021-10-09, 23:39
psSAR1g [W/Kg]	1.25	1.29
psSAR10g [W/Kg]	0.970	0.985
Power Drift [dB]	0.04	0.05
TSL Correction	Positive only	Positive only
M2/M1 [%]		82.3
Dist 3dB Peak [mm]		> 15.0



**APPENDIX F**  
**Shortened Scan of Highest SAR configuration**

### Shortened Scan Assessment (Table 30)

Motorola Solutions, EME Laboratory

2021-10-17, 02:21

Measurement Report for AAH01JDC9JA2AN (PMUD3231C), 752TXR1427, BACK, Custom Band, CW, Channel 150800 (150.8 MHz)

#### Device Under Test Properties

Model	Serial Number	Dimensions [mm]
AAH01JDC9JA2AN (PMUD3231C)	752TXR1427	277.0 x 63.0 x 40.0

#### Exposure Conditions

Phantom Section, TSL	Position, Test Distance [mm]	Band	Group, UID	Frequency [MHz], Channel Number	Conversion Factor	TSL Conductivity [S/m]	TSL Permittivity
Flat, HSL	BACK, 0.00	Custom Band	CW, 0--	150.8, 150800	12.09	0.749	50.2

#### Hardware Setup

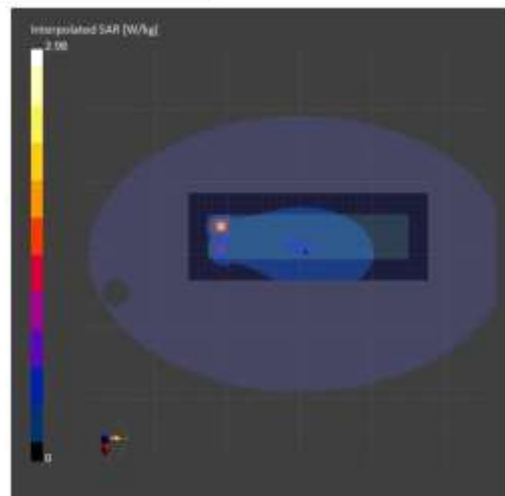
Phantom	TSL, Measured Date	Probe, Calibration Date	DAE, Calibration Date
ELI V4.0 (20deg probe tilt) - ELI4 1016	HSL150 , 2021-Oct-16	EX3DV4 - SN7511, 2021-06-18	DAE4 Sn729, 2021-06-09

#### Scans Setup

	Area Scan	Zoom Scan
Grid Extents [mm]	120.0 x 330.0	30.0 x 30.0 x 30.0
Grid Steps [mm]	15.0 x 15.0	4.4 x 4.4 x 1.4
Sensor Surface [mm]	3.0	1.4
Graded Grid	Yes	Yes
Grading Ratio	1.5	1.4
MAIA	N/A	N/A
Surface Detection	VMS + 6p	VMS + 6p
Scan Method	Measured	Measured

#### Measurement Results

	Area Scan	Zoom Scan
Date	2021-10-17, 02:21	2021-10-17, 02:48
psSAR1g [W/Kg]	2.08	2.27
psSAR10g [W/Kg]	0.990	0.647
Power Drift [dB]	-0.00	0.06
TSL Correction	Positive only	Positive only
M2/M1 [N]		46.4
Dist 3dB Peak [mm]		5.1



Shortened scan reflects highest SAR producing configuration and is compared to the full scan.

Scan Description	Referenced Table	Test Time (min.)	SAR 1g (W/kg)
Shorten scan (zoom)	30	7	1.34
Full scan (area & zoom)	23	30	1.33

**APPENDIX G**  
**DUT Test Position Photos**

**Photos available in Exhibit 7B**



**APPENDIX H**  
**DUT, Body worn and audio accessories Photos**

**Photos available in Exhibit 7B**