

## **EXHIBIT 9**

### **Internal Photographs**

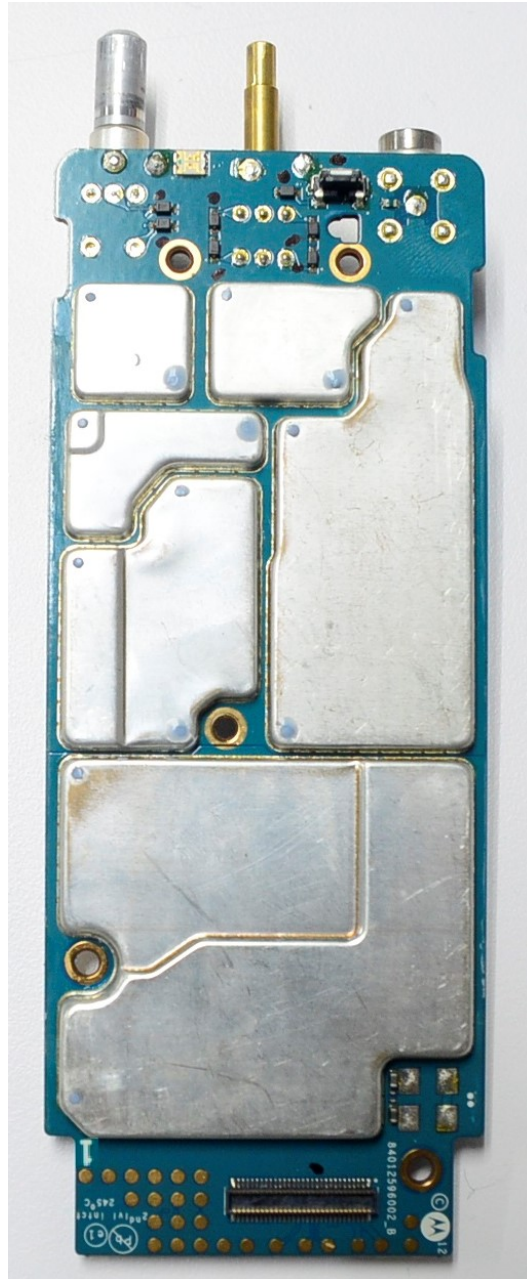
(Pursuant to FCC Part 2.1033(b)(7), 2.1033(c)(12) and RSP 100 Annex C)

The following photographs are attached.

Exhibit

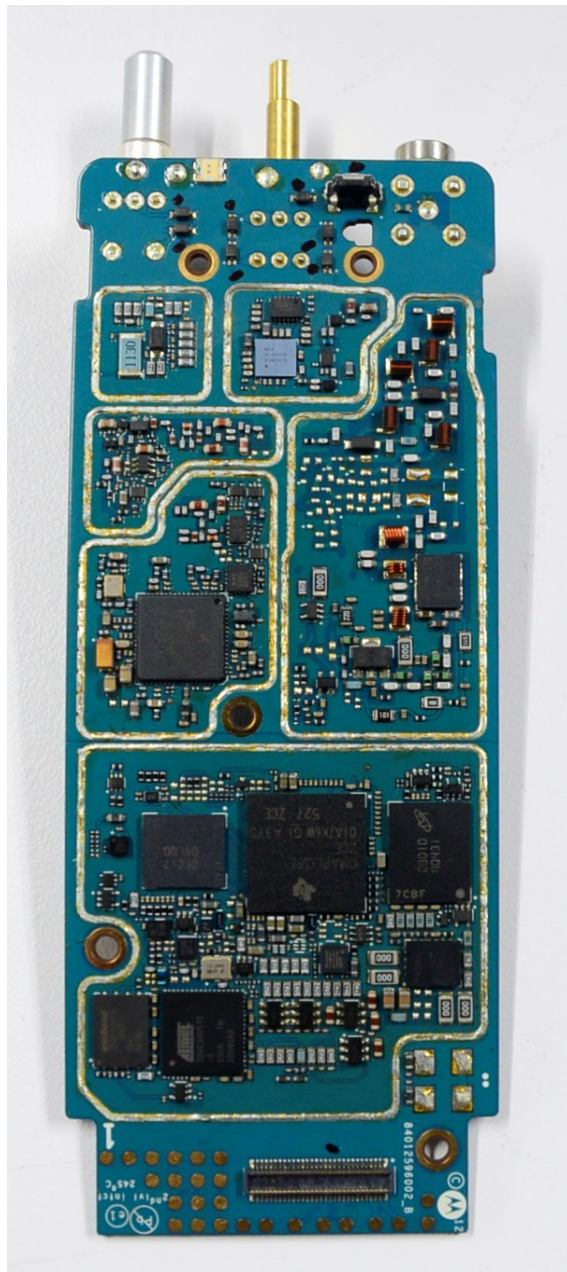
- |  |    |
|--|----|
| 1. RF board <u>with</u> Shields (Top)                        | 9A |
| 2. RF board <u>without</u> Shields (Top)                     | 9B |
| 3. RF board <u>with</u> Shields (Bottom)                     | 9C |
| 4. RF board <u>without</u> Shields (Bottom)                  | 9D |
| 5. RF board <u>with</u> chassis and housing for (Front Side) | 9E |
| 6. Chassis and housing (Back Side)                           | 9F |
| 7. Exploded View of radio                                    | 9G |

**EXHIBIT 9A**



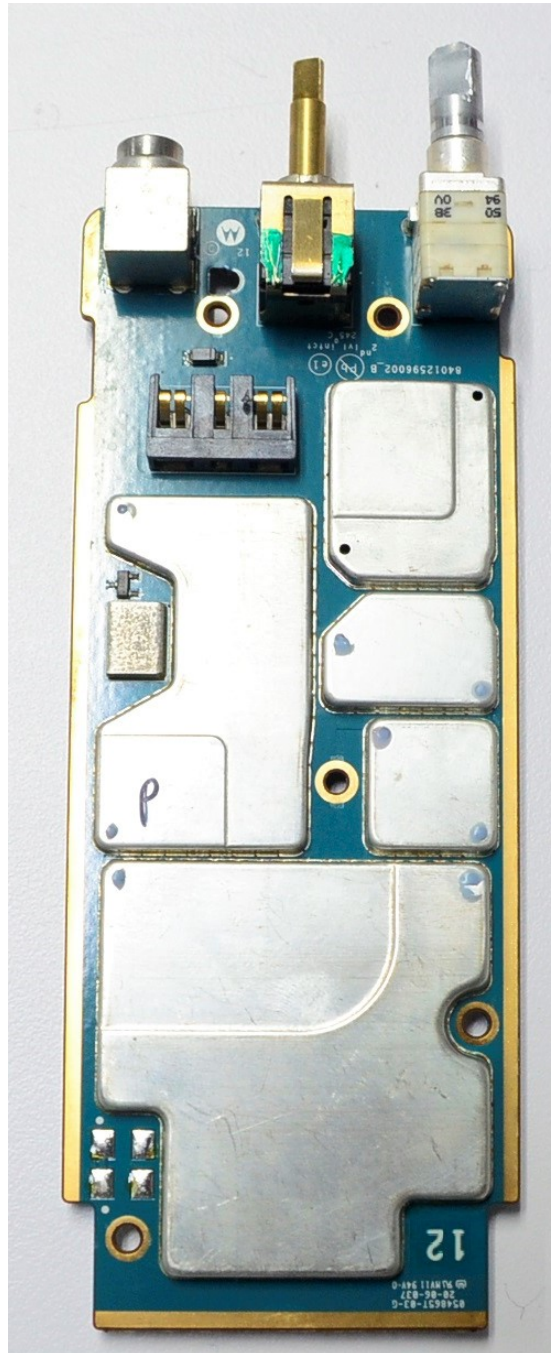
RF board with Shields (Top)

**EXHIBIT 9B**



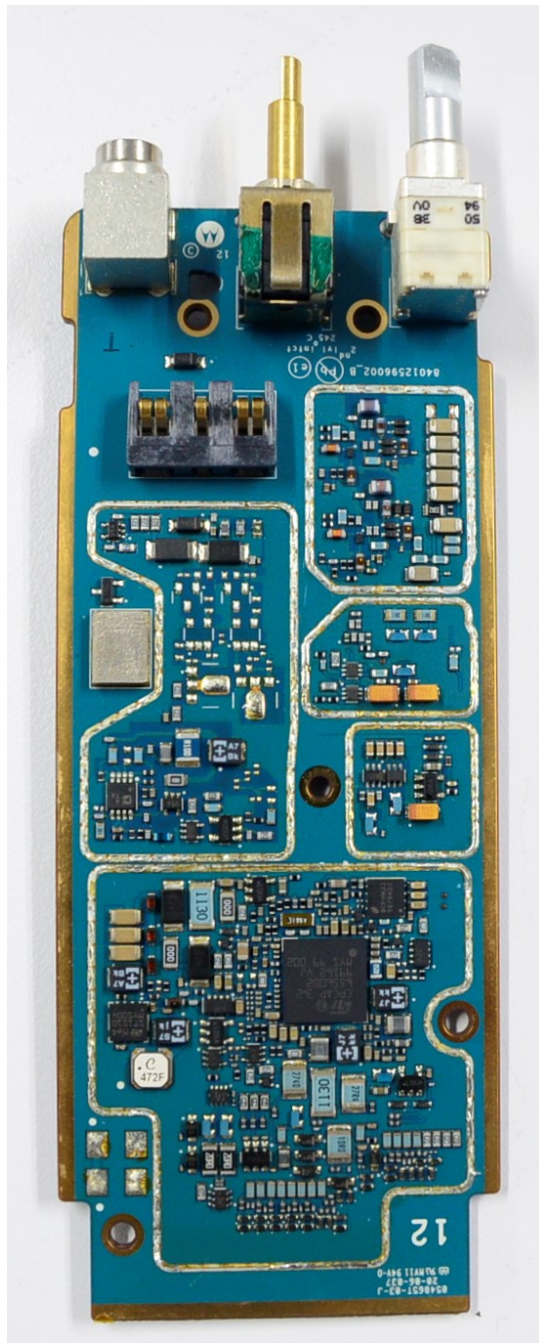
RF board without Shields (Top)

**EXHIBIT 9C**



RF board with Shields (Bottom)

**EXHIBIT 9D**



RF board without Shields (Bottom)



**EXHIBIT 9E**



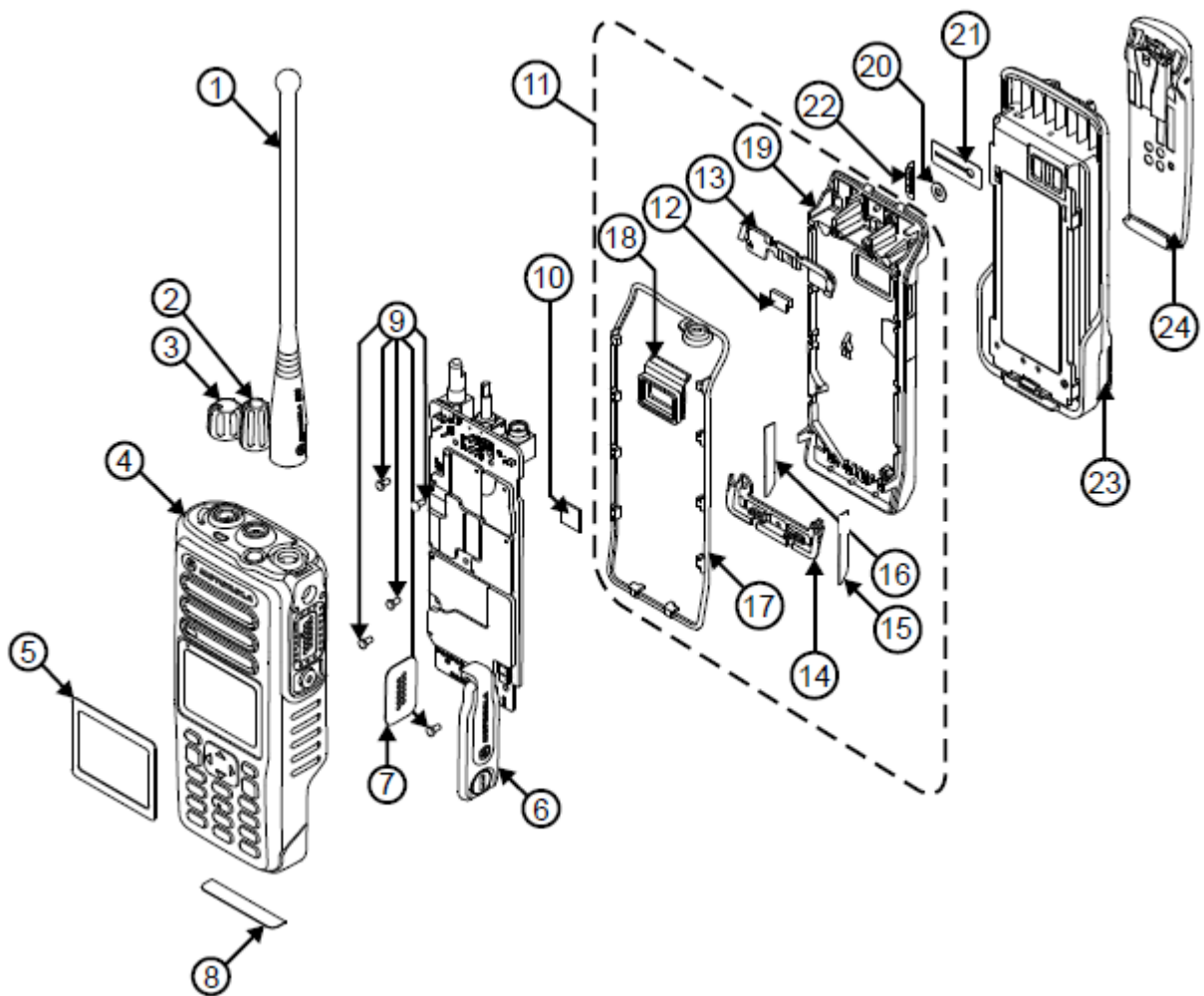
RF board with chassis and housing for (Front Side)

**EXHIBIT 9F**



Chassis and housing (Back Side)

**EXHIBIT 9G**



Exploded View of radio

\*\*\* END \*\*\*