

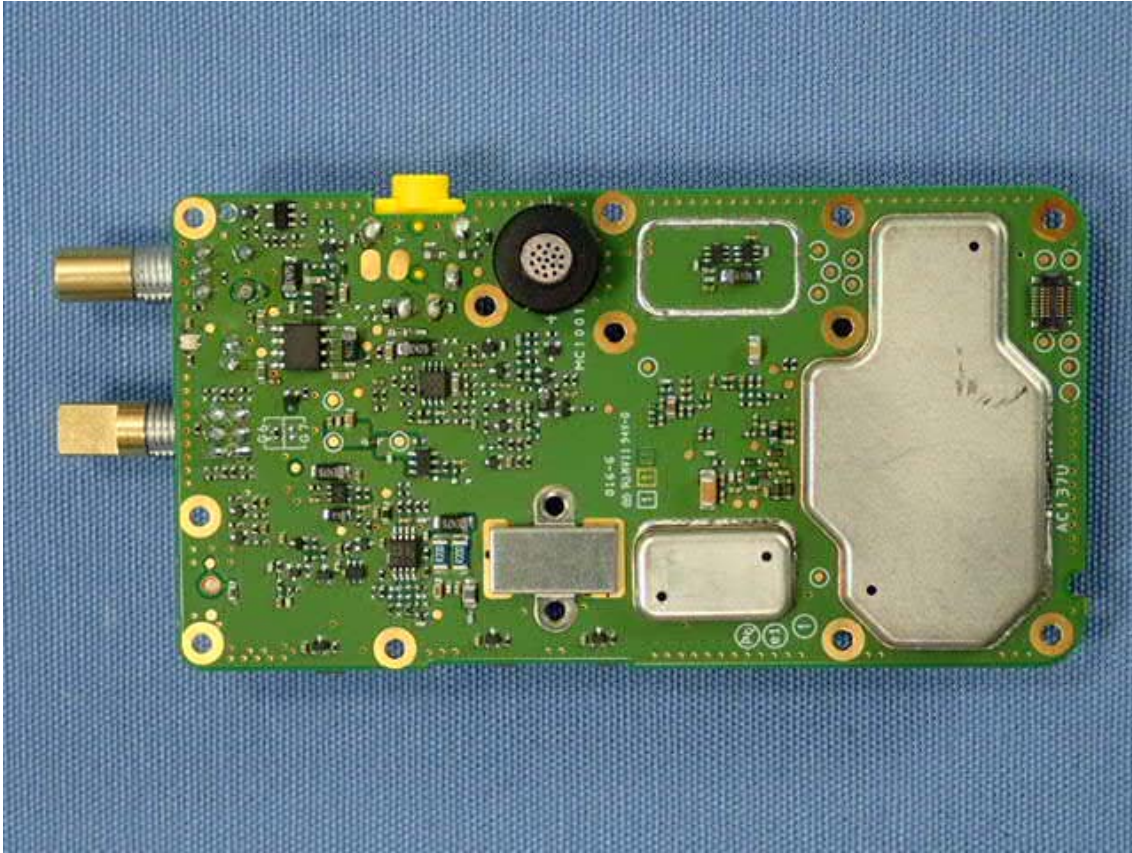
**Exhibit 9: Internal photo**

FCC ID: AXI11374720

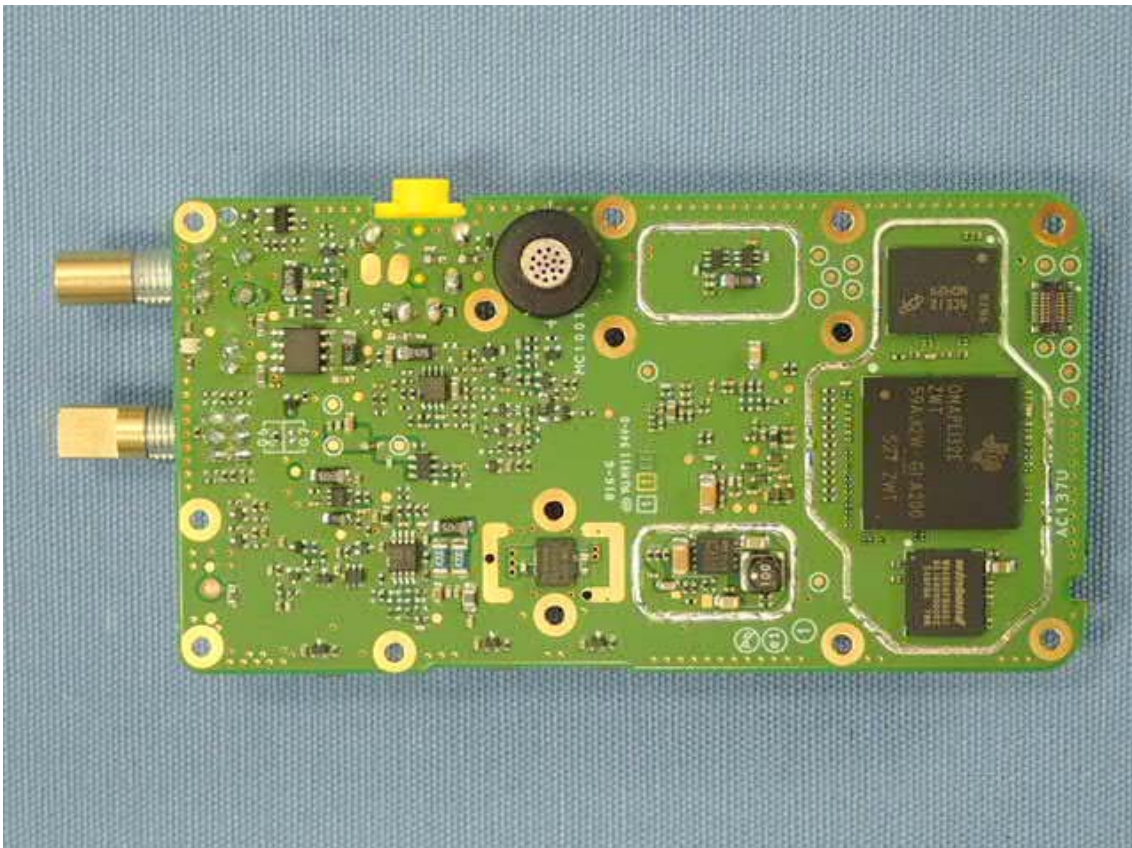
IC: 10239A-11374720

Page 1 of 4

Side-A of MAIN-UNIT with Shield



Side-A of MAIN-UNIT without Shield





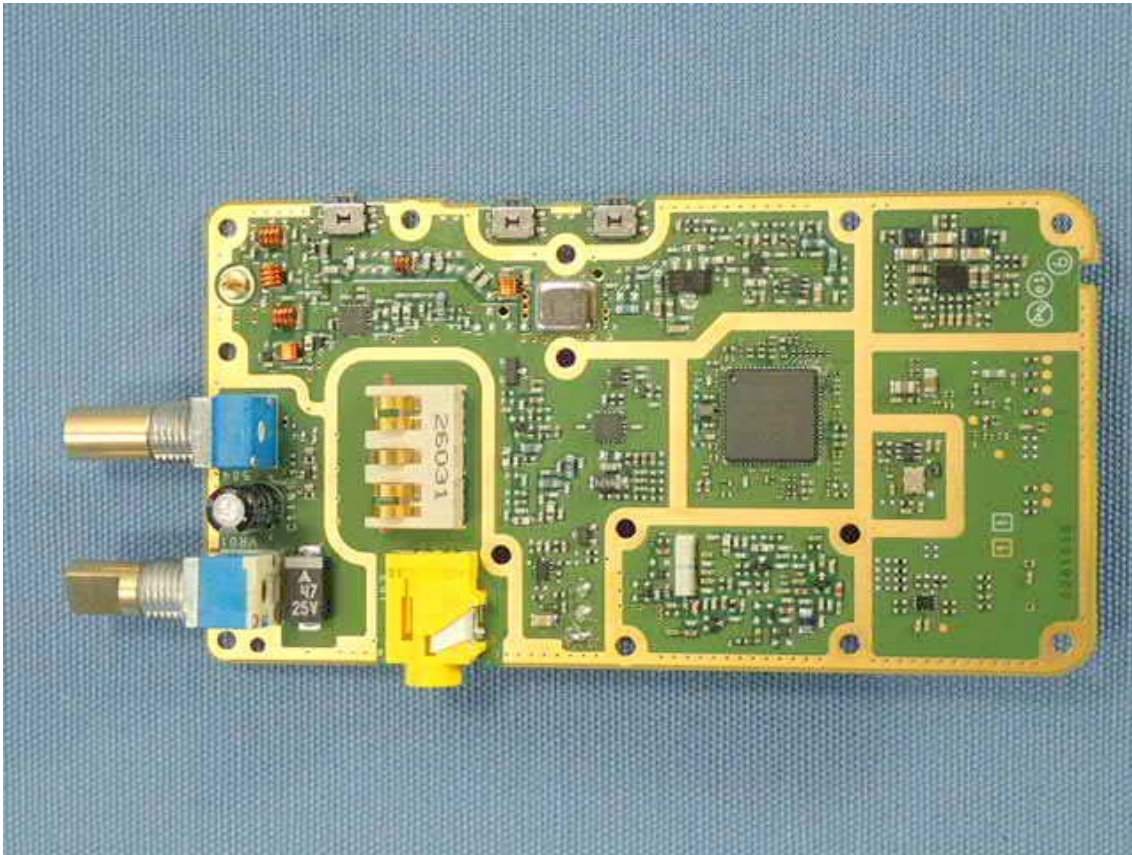
**Exhibit 9: Internal photo**

FCC ID: AXI11374720

IC: 10239A-11374720

Page 2 of 4

Side-B of MAIN-UNIT



Inside of chassis





FCC ID: AXI11374720  
IC: 10239A-11374720  
Page 3 of 4

The image shows the back of a silver mobile phone with its battery cover removed, revealing a blue textured battery insert. The battery cover has several labels and markings:

- Top Left:** A small label with the text "RETURNED TO MANUFACTURER".
- Top Center:** A large label with the text "EVX-261-G7-5".
- Top Right:** A label with the text "VERTEX STANDARD LMR, INC." and "FCC ID: A111374638".
- Bottom Left:** A label with the text "6.7-8.1V" and "SER NO: 2B6C800038".
- Bottom Center:** A label with the text "CAUTION" and "Do not block vent in this area".
- Bottom Right:** A label with the text "This device complies with part 15 of the FCC Rules. Operation is subject to the condition that this device does not cause harmful interference." and "CAUTION" with a warning symbol.

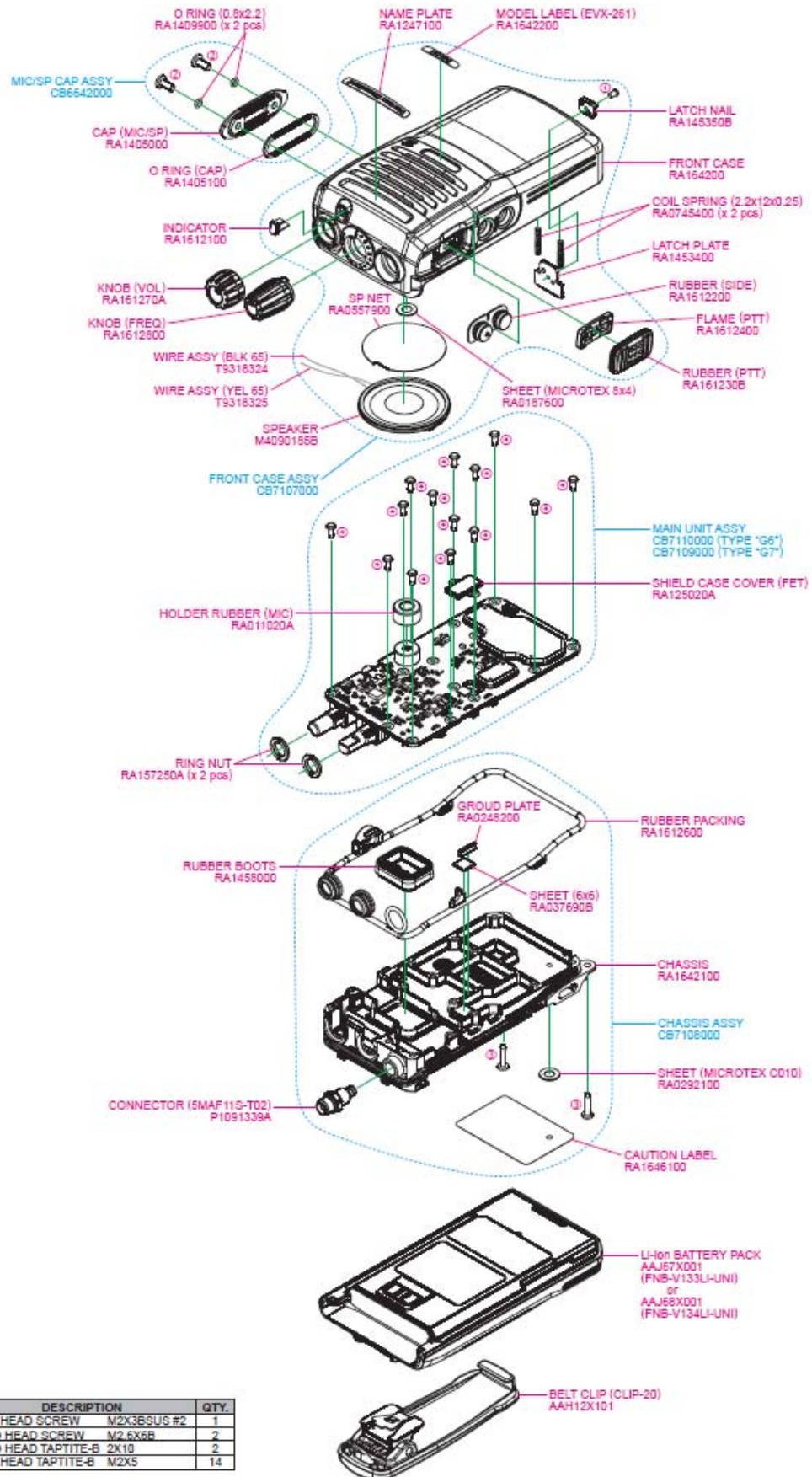
# Exhibit 9: Internal photo

FCC ID: AXI11374720

IC: 10239A-11374720

Page 4 of 4

## EVX-261-G7-5 Exploded View



REF.	VXSTD PM	DESCRIPTION	QTY.
①	U07230227	PAN HEAD SCREW M2X3BSUS #2	1
②	U20206007	RIND HEAD SCREW M2.6X6R	2
③	U24110001	BIND HEAD TAPTITE-B 2X10	2
④	U44105001	PAN HEAD TAPTITE-B M2X5	14