

# PS4 Wireless Controller



on: [redacted]

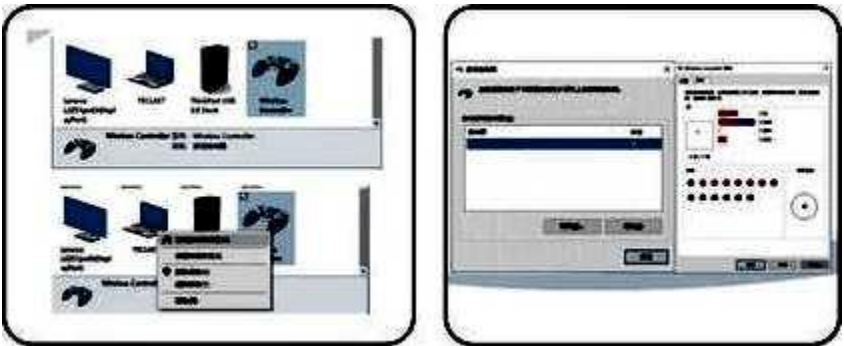
The Controller Is specially designed for PlayStation 4 console, adapting Dual Shock 4 wireless controller program • h equipped with latest motion sensing technology,tHiilt<in three-axis gyroscope and three«axi\$ acceleratonWith the three features,it can detect omnidirectk>ndl dynamic Information including Roll, Pitch and Yaw. In addition to induce tilt angle of the controller,it can also capture the 3 axis acceleration information of three^limenslona space X, Y, Z.and transmit aN information captured to the game system quickly.WHh this function^iayars can UM this PS4 Dual Shock 4 contrcMler to operate special games. It's also featured with a new function:dual-point capacitive sensing touchpad on the front of the controller.lfs the first controller which can support Windows PC.

Therw ara Mveral built-in output coniwction ports !n the contrlor: 3.Smm headset Jac 虹 Micro4JSB charging port, oxtelMlon port and builtUi speaker.



3.1^2 Basic description of 3ix>axis  
X axis:acc»leration movement of X axis ls: k>ft—right— Representative game disc: NBA07.  
Y axis:acc»leration movement of Y axis ls: front—back, back-front Representative game disc: NBA07.  
Z axl»:accel»ratlon movement of Z axis ls: up-Hk>wn, down-<up. R«pres«ntative game disc : NBA07.  
Roll axis:tilt from left and right talcing the Y axis as the center axis, movement of Roll axis ls: flat—«tilt left, flat—»tilt right J^apresMitative game disc : BLAZING ANG, TONY HAWK'S, GENJI, RIDGE RACER. Pitch sxiB: tilt fr<wn front and back taking the X axis as the center axis, movement of Pitch axis ls: flat-\*tilt front, flat-<tilt back .Rfipmentative game disc: BLAZING ANG, TONY HAWK'S, GEN JI.  
Yaw axis:rotate from left and right taking the Z axis as the center axis, movement of Yaw axis ls: fflat-\*rotate left, flat—rotate rightRepcesontative game disc: NBA07, TONY HAWK'S.

3-2 Standar<l-PS4 working mode  
321 The controller can fulfill any function in games on PS4 console, Including basic digital and analog buttons as well as six-axis sensor and color display function of LEDA the same time,regarding to certain games, It supports vibration function.But when test on Window 10 PC, a virtual 6\*axis 144<ey ♦ visual hebnet function device appears,at this point, no operation can be carried on.Defaultt interface of 6\*axis 16keys 1 POV under Windows 10 system is as below:



3.3 Sensor Callbntflon  
Sensor Calibration Is completed automatically when testing PCBA, no need any calibration any more.

3\*4 Sleep mode  
The controUer enters Into Steep mode If ft falls to get connection with PS4 console after ifs under search status for 30 secondB or If no buttons press and no big movement of 3D analog for 10 minutes.Ybu can wake up the controller by pressing PS button.

X5 LED Indication  
Led indicators will enter Into breathing light mode If ths controller is charging under power off status, and the color Is random. Th\* light goes off when controller is full charged.

(Mffarant llgM colors of each contr<Mler when several controllers connected to one Console at ths same tinw: User 1 blue light. User 2 rad light, User 3 grasn ligh&Usar 4 pink light  
Stand-by mode: orange light  
Charge while playing: blue light  
Charge while in stand-by mode: orange light, and light 90\*8 off when full charged  
Controller lose connection: white light

3.6 Bluetooth Connection:  
3.6.1 A data-capable USB cable is required to wired connect the controller to P34 consola for the first time you use this controller on the current ConsolB. Hold ths PS button, the LED light bar will keep a single color, coonected succMsfuNy, after the first time, hence you can connect the controller to the Console wirelessly via Bluetooth.  
3.6«2 Se PS4 console can only support 7 bluetooth devices at the same time no matter it's connected wired or wirelessly;

3.7 Correspondence of Standard PS4 and PC buttons (Chart)

PS4	□	×	○	△	L1	R1	L2	R2	SHARE	OPTION	L3	R3	PS	T-PAD
PC	1	2	3	4	5	6	7	8	9	10	11	12	13	14

Among them, the 3«5mm stereo headset jack can connect with headset and microphone\* allowing Users to receive and fransmit audio at the same time.

The controller is loaded with a light bar which can glow various colors, different colors represent different ptayers.they can also used as an important mM sage tips such as reduction of player's life value and so on. What's morOfthe light bar also can Interact with Playstation camera,so that the camera can determine the movement and distance of the controller.

Features  
Standard buttons: PS,Share,Option,[J,—,—,] L1,L2,L3,R1.R2,R3,VRL.VRR,RESET Supports any software version of the PS4 Console  
Connected with PS4 console via Bluetooth Ver 4.0,distance range 10M Equipped with 6\*axis sensor which ls composed by 3D acceleration sensor and gyro sensor  
With RGB LED color channel instructions  
Supports dual-point ca>active sensing touchpad  
Equipped whh 3.5mm stereo headset jack and built\*in speaker  
Supports double motor vibration function  
Wide operating voltage range\* ultra low sleep current  
Full function as original Dual Shock 4, works with PC by InstalNng driver (no driver nM<fod for Windows 10 and Android



3.1 PS4 Platform function  
3.1.1 The Slx\*axis function consisting of 3D and G ls as follow

## Electrical parameters

Electrical parameters (All voltagos are referenced to GND and th® ambient temperature ls 25 degrees)

Pa remoter	Symbol	CondtUon	Minimum	lypical	Maximum	Unit
Working volteBe	Vo	whole machIn*	3-6		4.5	V
WorMng current		whole machIvM		80		mA
Sletp mode current	Itp	whole machine		70		uA
Motor current	Im	m»9nitude			BO	mA

Limited rating (All voltages are referenced to GND and the ambient temperature is 25 degrees)

Parameter	Symbol	Rated value	Unit
Input vottage	USB VIN	5.0	V
Input current	USB UN	1000	mA
Working temperature range	TJ	0-40	c
storage temperature	TSTG	-20-85	C

When a firmware update of the PS4 Console Is Installed,It can ba pcssibki that the functions In the adaptor may ba affscted.then you will nMd to update tha controller as w<l to fix these Issues

SONY® and PS4' are registered trademarics of Sony Computer Entertainment inc.

NOTE: This equipment has been tested and found to comply with the limits for a Class B digital device, pursuant to part 15 of the FCC Rules. These limits are designed to provide reasonable protection against harmful interference in a residential installation. This equipment generates uses and can radiate radio frequency energy and, if not installed and used in accordance with the instructions, may cause harmful interference to radio communications. However, there is no guarantee that interference will not occur in a particular installation. If this equipment does cause harmful interference to radio or television reception, which can be determined by turning the equipment off and on, the user is encouraged to try to correct the interference by one or more of the following measures:

- Reorient or relocate the receiving antenna.
- Increase the separation between the equipment and receiver.
- Connect the equipment into an outlet on a circuit different from that to which the receiver is connected.
- Consult the dealer or an experienced radio/TV technician for help

Changes or modifications not expressly approved by the party responsible for compliance could void the user's authority to operate the equipment.

This device complies with Part 15 of the FCC Rules. Operation is subject to the following two conditions:

- (1) this device may not cause harmful interference, and
- (2) this device must accept any interference received, including interference that may cause undesired operation.