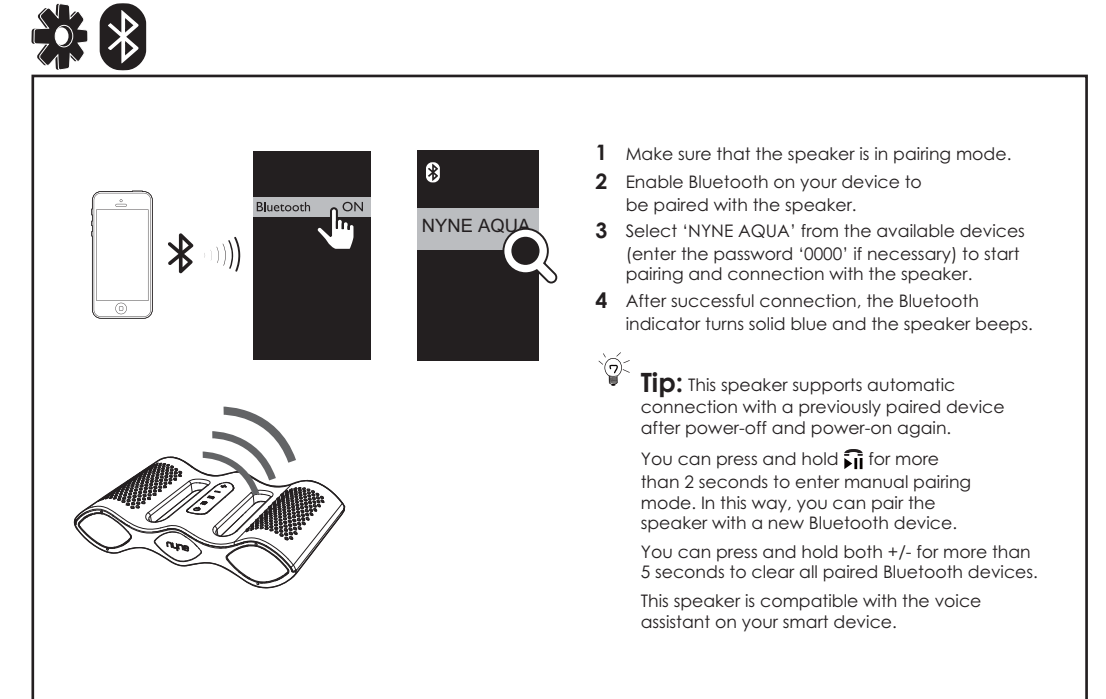
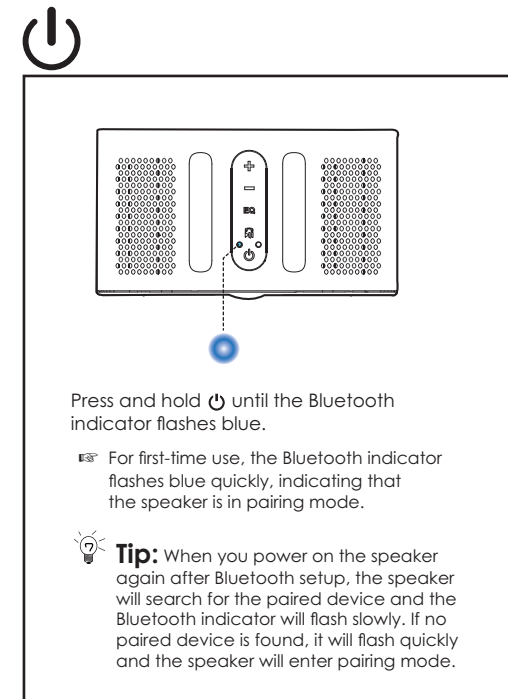
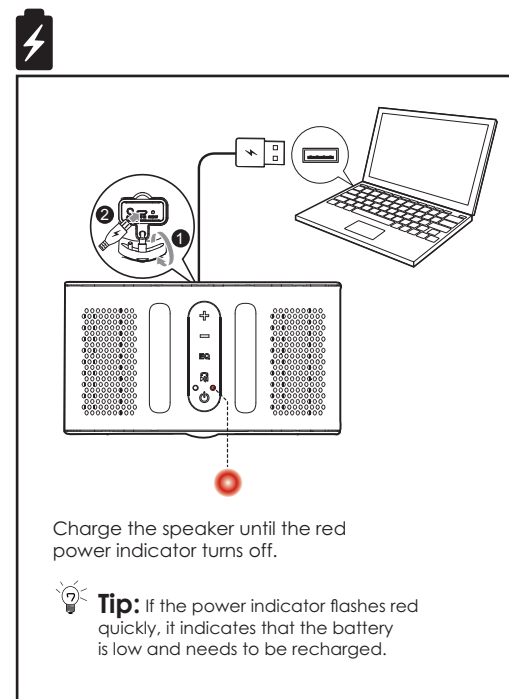
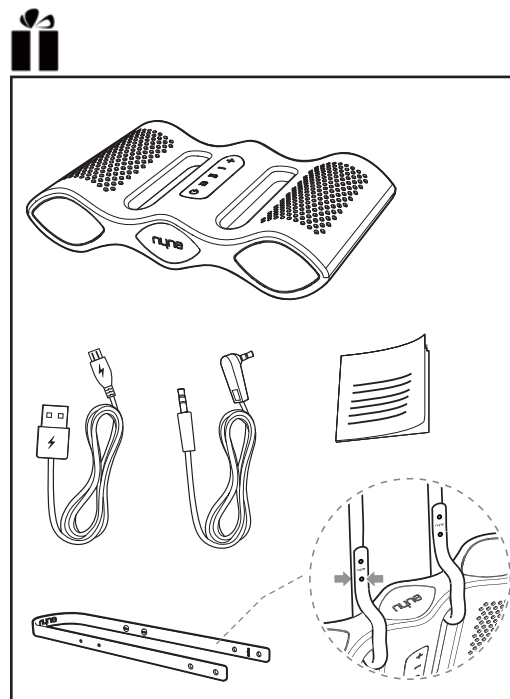


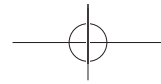
# nyne

## Aqua

- |  |  |
|--|--|
| <b>CS</b> Přenosného reproduktoru Bluetooth          | <b>LT</b> Garsiakalbio vartotojo vadovas     |
| <b>ET</b> Kaasakantav Bluetooth kõlar                | <b>PL</b> Przenośnego głośnika Bluetooth     |
| <b>GE</b> für einen portablen Bluetooth-Lautsprecher | <b>RO</b> Difuzor portabil Bluetooth         |
| <b>HU</b> Rövidített használati útmutató             | <b>SK</b> Prenosného reproduktora Bluetooth  |
| <b>LV</b> Pārnēsājams Bluetooth skaļrunis            |  |
| <b>CS</b> Stručná příručka uživatele                 | <b>LT</b> Sutrumpintas nešiojamojo bluetooth |
| <b>ET</b> Lühike kasutusjuhend                       | <b>PL</b> Skrócony Przewodnik Użytkownika    |
| <b>GE</b> verkürztes Benutzerhandbuch                | <b>RO</b> Ghid de referință rapidă           |
| <b>HU</b> Hordozható Bluetooth hangszóró             | <b>SK</b> Stručná príručka uživateľa         |
| <b>LV</b> Saisināta Lietotāja Rokasgrāmata           |  |

nyne.com **CE 2200**





QUG-Aqua-06-23-2014-V1.0

All registered and unregistered trademarks are property of their respective owners. Nyne Multimedia Inc. All rights reserved.

# nyne



Play music on your device paired and connected with the speaker.

**Note:** This speaker supports automatic connection with a previously paired device after power-off and power-on again.

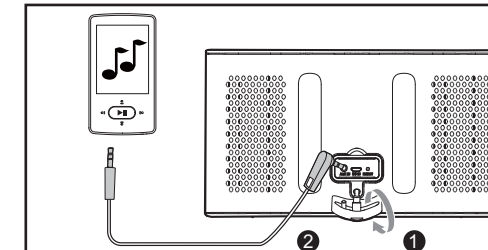
During music play:

- Press +/- to adjust volume.
- Press and hold +/- to skip to the previous or next song.
- Press to pause or resume music play.
- Press to select your favorite preset sound effect: FLAT, ROCK, POP or JAZZ.
- Press and hold for more than 3 seconds to return to FLAT at any time.
  - ☛ The Bluetooth indicator flashes blue once when you select a sound effect other than FLAT.
  - ☛ The Bluetooth indicator flashes blue twice when you select FLAT.

When you make a call or there is an incoming call, you can use the speaker as a speaker phone.

- When there is an incoming call, you can press to receive the call or press twice to reject the call.
- During a call, you can press to end the call.
- In BT mode, you can press twice to access the voice assistant on your smart device. To exit the voice assistant, press twice again.

**Tips:** Music play is paused during a call and resumed automatically when the call ends. You can press and hold to disconnect the current Bluetooth connection. If no source is detected, the button does not function.



- 1 Connect an auxiliary audio device to the speaker through the supplied 3.5mm audio cable.
- 2 Play and control music on the audio device, and use +/- on the speaker to adjust volume if necessary.

**Tips:** In AUX IN mode, you can press to mute sound output from the speaker. When the 3.5mm audio cable is plugged in, the speaker switches to AUX IN mode automatically. When it is unplugged, the speaker switches back to Bluetooth mode.

The button also functions in AUX IN mode. The voice assistant function does not work in AUX IN mode.

In case of abnormality, you can hold the **RESET** button to reset the speaker.

#### FCC STATEMENT

1.This device complies with Part 15 of the FCC Rules.Operation is subject to the following two conditions:  
(1)This device may not cause harmful interference, and (2)This device must accept any interference received, including interference that may cause undesired operation.2.Changes or modifications not expressly approved by the party responsible for compliance could void the user's authority to operate the equipment.

#### FCC Radiation Exposure Statement:

The device has been evaluated to meet general RF exposure requirement. The device can be used in portable exposure condition without RF striction.  
NOTE: This equipment has been tested and found to comply with the limits for a Class B digital, pursuant to Part 15 or the FCC Rules. These limits are designed to provide reasonable protection against harmful interference in a residential installation. This equipment generates, uses and can radiate radio frequency energy and, if not installed and used in accordance with the instructions, may cause harmful interference to radio communications. However, there is no guarantee that interference will not occur in a particular installation. If the equipment does cause harmful interference to radio or television reception, which can be determined by turning the equipment off and on, the user is encouraged to try to correct the interference by one or more of the following measures:  
--- Reorient or relocate the receiving antenna.  
--- Connect the equipment into an outlet on a circuit different from that to which the receiver is connected.  
--- Consult the dealer or an experienced radio/ TV technician for help.