

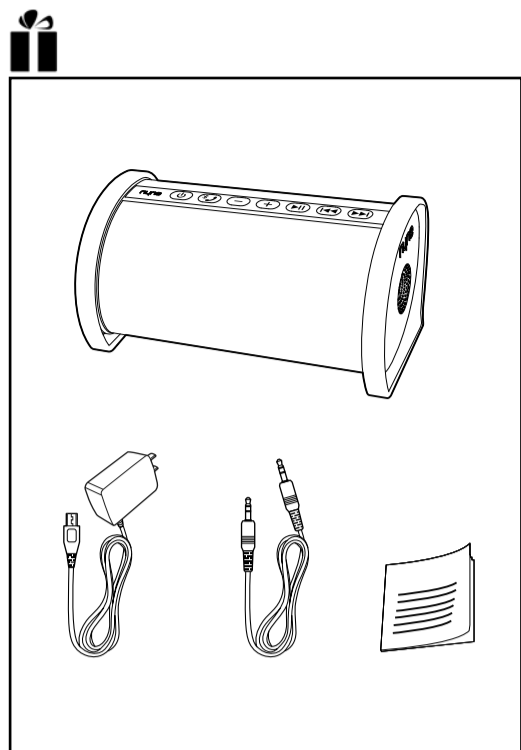
nyne

# Adventure

- EN Portable Bluetooth Speaker
- ES Altavoz Bluetooth portátil

- EN Quick User Guide
- ES Guía rápida del usuario

nyne.com



**EN**  
Charge the speaker until the LED light beside the button turns solid white.

**Tips:** If the LED light flashes white slowly, it indicates that the battery is low and needs to be recharged.

**ES**  
Cargue el altavoz hasta que la luz LED al lado del botón se vuelva a color blanco sólido.

**Consejos:** Si la luz LED parpadea en blanco lentamente, indica que la batería está baja y necesita ser recargada.

**EN**  
Press to power on.  
For first-time use, the Bluetooth indicator flashes blue quickly, indicating that the speaker is in pairing mode.

**Tips:**  
When you power on the speaker again after Bluetooth setup, the speaker will search for the previously paired device and the Bluetooth indicator will flash slowly. If no paired device is found, it will flash quickly and the speaker will enter pairing mode.  
If there is no power to the speaker after you press the power button, check that the speaker is connected to AC power or the battery is fully charged.  
You can hold again to power off. To save power, the speaker turns off automatically after 15 minutes of inactivity.

**ES**  
Pulse para encender.  
Cuando vaya a usarlo por primera vez, el indicador de Bluetooth parpadea rápidamente en azul, lo que indica que el altavoz está en modo de sincronización.

**Consejos:**  
Cuando vuelva a encender el altavoz después de configurar el Bluetooth, el altavoz buscará el dispositivo sincronizado y el indicador de Bluetooth parpadeará lentamente. Si no se encuentra ningún dispositivo sincronizado, parpadeará rápidamente y el altavoz pasará a modo de sincronización.  
Si el altavoz no se enciende tras pulsar el botón de encendido, compruebe que el altavoz está conectado a la fuente de CA o que la batería está totalmente cargada.  
Puede mantener presionado el botón de nuevo para apagar.  
Para ahorrar energía, el altavoz se apaga automáticamente después de 15 minutos de inactividad.

QUG-Adventure-06-06-2017-V1.0  
All registered and unregistered trademarks are property of their respective owners.  
Nyne Multimedia Inc.  
All rights reserved.

nyne

**EN**

- 1 Make sure that the speaker is in pairing mode.
- 2 Enable Bluetooth on your device to be paired with the speaker. Select 'NYNE Adventure' from the available devices (enter the password '0000' if necessary) to start pairing and connection with the speaker.
- 3 After successful connection, the Bluetooth indicator turns solid blue and the speaker beeps.

**Tips:** This speaker supports automatic connection with a previously paired device after power-off and power-on again. You can press and hold for more than 2 seconds to enter manual pairing mode. In this way, you can pair the speaker with a new Bluetooth device. You can press and hold for more than 8 seconds to clear all paired Bluetooth devices.

**ES**

- 1 Asegúrese de que el altavoz está en modo de sincronización.
- 2 Active la opción Bluetooth en su dispositivo para sincronizarlo con el altavoz. Seleccione 'NYNE Adventure' entre los dispositivos disponibles (introduzca la contraseña "0000" si es necesario) para iniciar la sincronización y la conexión con el altavoz.
- 3 Cuando se ha conectado, el indicador Bluetooth se vuelve de color azul sin parpadear y el altavoz emite un pitido.

**Consejos:** Este altavoz permite realizar una conexión automática con un dispositivo previamente sincronizado tras apagarlo y volverlo a encender. Puede pulsar durante 2 segundos para pasar a modo de sincronización manual. De este modo, podrá sincronizar el altavoz con un nuevo dispositivo Bluetooth. Puede pulsar durante 8 segundos para borrar todos los dispositivos Bluetooth sincronizados.

**EN**

- 1 Connect an auxiliary audio device to the speaker through the 3.5mm audio port.
- 2 Play and control music on the audio device, and use +/- on the speaker to adjust volume if necessary.

**Tips:** When the 3.5mm audio cable is plugged in, the speaker switches to LINE IN mode automatically. When it is unplugged, the speaker switches back to Bluetooth mode and connects with the previously paired device automatically. If no device is available, the speaker enters pairing mode. During playback, you can press to pause or resume sound output.

**ES**

- 1 Conecte un dispositivo de audio auxiliar al altavoz utilizando el cable de audio de 3,5 mm.
- 2 Reproduzca y administre su música en el dispositivo de audio y utilice +/- en el altavoz para ajustar el volumen si es necesario.

**Consejos:** Cuando conecte el cable de audio de 3,5 mm, el altavoz pasa automáticamente a modo de entrada auxiliar. Cuando se desconecta, el altavoz vuelve a modo Bluetooth y se conecta automáticamente al dispositivo previamente sincronizado. Si no hay dispositivos disponibles, el altavoz pasa a modo de sincronización. Durante la reproducción, puede presionar para pausar o reanudar la salida de sonido.

**EN**  
Play music on your device paired and connected with the speaker.  
During music play:  
• Press +/- to adjust volume.  
• Press to skip to the previous or next song.  
• Press to pause or resume music play.  
When you make a call or there is an incoming call, you can use the speaker as a speaker phone.  
• When there is an incoming call, you can press to receive the call.  
• During a call, you can press to end the call.

**Tips:** Music play is paused during a call and resumed automatically when the call ends. You can press and hold to disconnect the current Bluetooth connection.

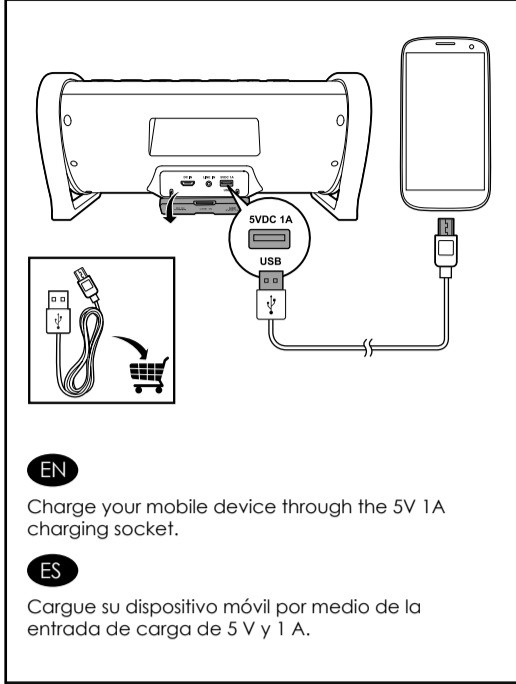
**ES**  
Reproduzca música en su dispositivo sincronizado y conectado con el altavoz.  
Durante la reproducción de música:  
• Pulse +/- para ajustar el volumen.  
• Pulse para pasar a la canción anterior o la siguiente.  
• Pulse para pausar o reanudar la reproducción de música.  
Cuando realice o reciba una llamada, puede utilizar el altavoz como manos libres.  
• Cuando reciba una llamada, pulse para responderla.  
• Durante una llamada, puede pulsar para finalizarla.

**Consejos:** La reproducción de música se pausa durante una llamada y se reanuda automáticamente cuando finaliza la llamada. Puede mantener pulsado durante unos segundos para desactivar la actual conexión Bluetooth.

**EN**

- 1 Conecte un dispositivo de audio auxiliar al altavoz utilizando el cable de audio de 3,5 mm.
- 2 Reproduzca y administre su música en el dispositivo de audio y utilice +/- en el altavoz para ajustar el volumen si es necesario.

**Consejos:** Cuando conecte el cable de audio de 3,5 mm, el altavoz pasa automáticamente a modo de entrada auxiliar. Cuando se desconecta, el altavoz vuelve a modo Bluetooth y se conecta automáticamente al dispositivo previamente sincronizado. Si no hay dispositivos disponibles, el altavoz pasa a modo de sincronización. Durante la reproducción, puede presionar para pausar o reanudar la salida de sonido.



## EN Important

### Safety



The lightning flash with arrowhead symbol within an equilateral triangle is intended to alert the user to the presence of un-isolated, dangerous voltage within the inside of the device that may be of sufficient magnitude to constitute a risk of electric shock to persons.

**Warning:** To reduce the risk of electric shock, do not remove cover (or back) as there are no user-serviceable parts inside. Refer servicing to qualified personnel.

The exclamation point within an equilateral triangle is intended to alert the user to the presence of important operating and servicing instructions in the literature accompanying the device.

**WARNING:** To reduce the risk of fire or electric shock, do not expose this apparatus to rain or moisture. The apparatus shall not be exposed to dripping or splashing and that objects filled with liquids, such as vases, shall not be placed on apparatus.

**WARNING:** Where the mains plug/appliance coupler is used as the disconnect device, the disconnect device shall remain readily operable.

**WARNING:** The battery (battery or batteries or battery pack) shall not be exposed to excessive heat such as sunshine, fire or the like.

Read these instructions before operation.

Keep these instructions for future reference. Follow all instructions for installation, use and maintenance of the device.

To clean the device, disconnect power first. Clean only with soft and dry cloth.

To ensure compatibility, only use accessories recommended by the manufacturer.

When the device is suddenly moved from cold to warm surroundings, condensation may form in the housing of the device. Before use, leave the device in the warm environment until the moisture evaporates.

Keep the device away from heat sources, such as a radiator, heater, oven, amplifier, naked flames or direct sunlight.

No naked flame sources, such as lighted candles, should be placed on the apparatus.

Never block any ventilation openings. Install in accordance with the manufacturer's instructions.

- Do not expose the device to sand or dust, or cover it with items, such as newspapers, table cloths, or curtains.
- Do not operate the device in an enclosed cabinet. Leave sufficient free space around the device for adequate ventilation.

Do not attempt to repair or service the device yourself. Opening or removing the cabinet may expose you to electric shock, and other hazards. If repair is required, contact your dealer and refer all servicing to qualified service personnel.

Do not use the device if any abnormality occurs. If any smoke or odor becomes apparent, contact your dealer immediately. Do not try to repair the device yourself.

Avoid using dropped or damaged appliances. If the device is dropped and the housing is damaged, the internal components may not function normally. Stop use and contact your dealer for repair. Continued use of the device may cause fire or electric shock.

To reduce the risk of electric shock, do not touch any connector with wet hands.

Never remove the housing of the device.

Never lubricate any part of the device.

Never place the device on top of any other electrical equipment.



This equipment is a Class II or double insulated electrical appliance. It has been designed in such a way that it does not require a safety connection to electrical earth.

## Notice Modification

Any modification (such as removing the speaker grill) to the device, without prior authorization from the manufacturer, may void your warranty and authority to operate the device.

### FCC compliance statement

This equipment has been tested and found to comply with the limits for a Class B digital device, pursuant to part 15 of the FCC Rules. These limits are designed to provide reasonable protection against harmful interference in a residential installation. This equipment generates, uses, and can radiate radio frequency energy and, if not installed and used in accordance with the instruction manual, may cause harmful interference to radio communications. However, there is no guarantee that interference will not occur in a particular installation. If this equipment does cause harmful interference to radio or television reception, which can be determined by turning the equipment off and on, the user is encouraged to try to correct the interference by one or more of the following measures:

- Relocate the receiving antenna.
- Increase the separation between the equipment and receiver.
- Connect the equipment into an outlet on a circuit different from that to which the receiver is connected.
- Consult the dealer or an experienced radio/TV technician for help.

This device complies with Part 15 of the FCC Rules. Operation is subject to the following two conditions:

(1) This device may not cause harmful interference, and (2) This device must accept any interference received, including interference that may cause undesired operation.

This Class B digital apparatus complies with Canadian ICES-003.

Cet appareil numérique de la classe B est conforme à la norme NMB-003 du Canada.

This device complies with FCC RF radiation exposure limits set forth for an uncontrolled environment.

This equipment should be installed and operated with a minimum distance of 20cm between the radiator and your body.

This device and its antenna(s) must not be co-located or conjunction with any other antenna or transmitter.

### Recycling

#### Packaging

Observe the local regulations for how to dispose of the packaging materials.

#### Instructions for Users on Removal, Recycling and Disposal of Used Batteries

To remove the batteries from your equipment or remote control, reverse the procedure described in the owner's manual for inserting batteries.

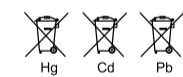
For products with a built-in battery that lasts for the lifetime of the product, removal may not be possible for the user. In this case, recycling or recovery centers handle the dismantling of the product and the removal of the battery. If, for any reason, it becomes necessary to replace such a battery, this procedure must be performed by authorized service centers. In the European Union and other locations, it is illegal to dispose of any battery with household trash. All batteries must be disposed of in an environmentally sound manner. Contact your local waste-management officials for information regarding the environmentally sound collection, recycling and disposal of used batteries.

**WARNING:** Danger of explosion if battery is incorrectly replaced. To reduce risk of fire or burns, don't disassemble, crush, puncture, short external contacts, expose to temperature above 60°C (140°F), or dispose of in fire or water. Replace only with specified batteries.

The symbol indicating 'separate collection' for all batteries and accumulators shall be the crossedout wheeled bin shown below:



In case of batteries, accumulators and button cells containing more than 0.0005 % mercury, more than 0.002 % cadmium or more than 0.004 % lead, shall be marked with the chemical symbol for the metal concerned: Hg, Cd or Pb respectively. Please Refer to the below symbol:



### Copyright



The Bluetooth word mark and logos are owned by the Bluetooth SIG, Inc. and any use of such marks by Nyne Multimedia Inc. is under license.

### Specifications

The technical specifications are subject to change without prior notice.

DC power input	DC 5V 2A
Speaker drivers	2 x 3.5 inches
S/N	>70dB
THD+N	<10%
Dimension	13.74 (W) x 6.69 (H) x 7.16 (D) inches
Weight	2.11 kg
Audio input	1 x 3.5 mm socket 1 x wireless input (Bluetooth)
Wireless	Bluetooth 2.1 + EDR (Class 2)
Bluetooth profiles	HFP, A2DP, AVRCP
Battery capacity	7.4V 2200mAh
Battery type	Lithium-ion
Play time	10 - 12 hours

### FCC Statement:

This device complies with part 15 of the FCC Rules. Operation is subject to the following two conditions: (1) This device may not cause harmful interference, and (2) this device must accept any interference received, including interference that may cause undesired operation.

This equipment has been tested and found to comply with the limits for a Class B digital device, pursuant to part 15 of the FCC Rules. These limits are designed to provide reasonable protection against harmful interference in a residential installation. This equipment generates, uses and can radiate radio frequency energy and, if not installed and used in accordance with the instructions, may cause harmful interference to radio communications. However, there is no guarantee that interference will not occur in a particular installation. If this equipment does cause harmful interference to radio or television reception, which can be determined by turning the equipment off and on, the user is encouraged to try to correct the interference by one or more of the following measures:

- Reorient or relocate the receiving antenna.
- Increase the separation between the equipment and receiver.
- Connect the equipment into an outlet on a circuit different from that to which the receiver is connected.
- Consult the dealer or an experienced radio/TV technician for help.

**Caution:** Any changes or modifications not expressly approved by the party responsible for compliance could void the user's authority to operate the equipment.

This equipment complies with FCC radiation exposure limits set forth for an uncontrolled environment.

This transmitter must not be co-located or operating in conjunction with any other antenna or transmitter.